

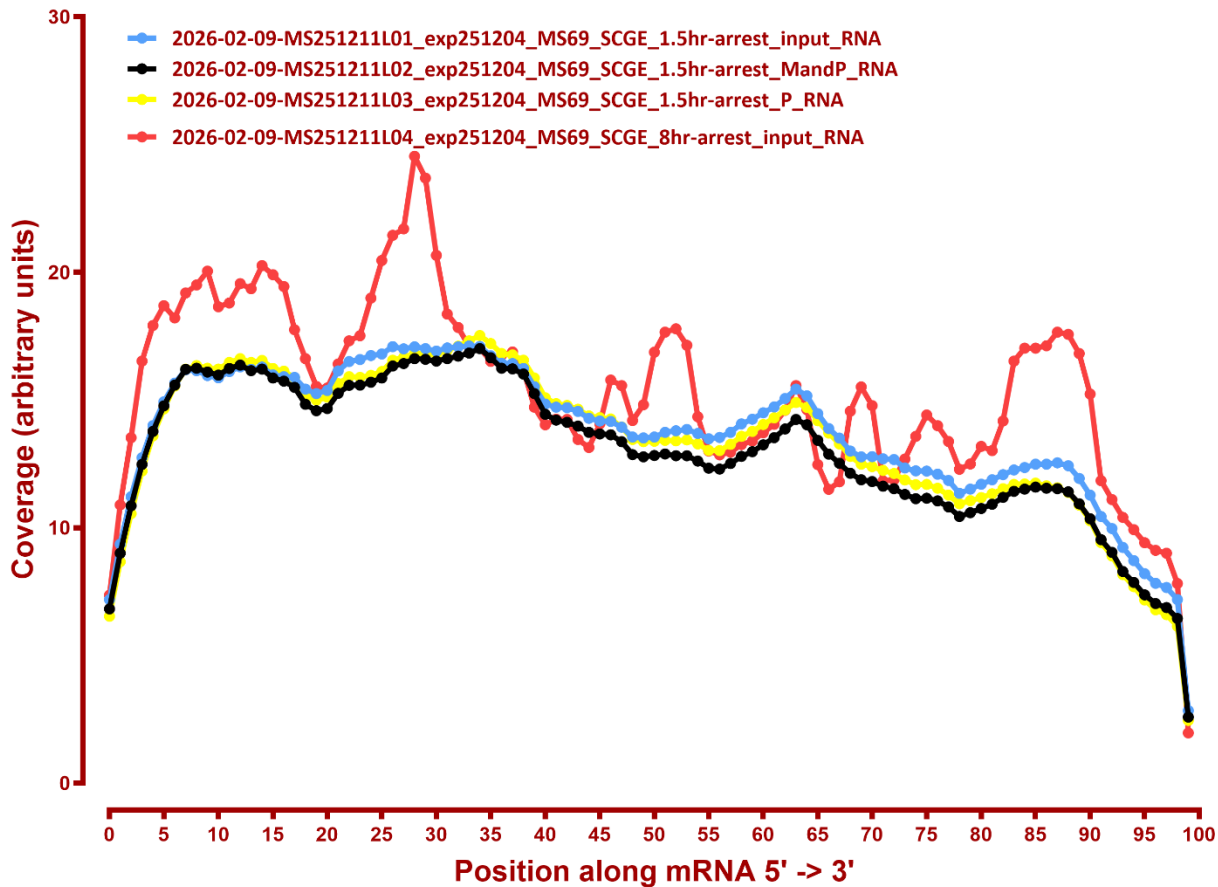
MAPPING STATS

Library	Read Length	Mapping	Species	Raw fragments	Complexity	Unique	Unique Splices	Multi	Multi Splices	Fraction mapped
2026-02-09-MS251211L01_exp251204_MS69_SCGE_1.5hr-arrest_input_RNA	2x150	STAR-2.5.3a	S_pombe	12,393,959	0.53	3,671,510	217,094	125,385	13,269	0.16
2026-02-09-MS251211L01_exp251204_MS69_SCGE_1.5hr-arrest_input_RNA	2x150	STAR-2.5.3a	sacCer3	12,393,959	0.45	12,666,526	236,126	1,271,614	83,858	0.58
2026-02-09-MS251211L02_exp251204_MS69_SCGE_1.5hr-arrest_MandP_RNA	2x150	STAR-2.5.3a	S_pombe	12,935,811	0.49	3,826,702	326,936	112,953	11,573	0.17
2026-02-09-MS251211L02_exp251204_MS69_SCGE_1.5hr-arrest_MandP_RNA	2x150	STAR-2.5.3a	sacCer3	12,935,811	0.44	13,238,495	358,817	1,359,133	77,351	0.58
2026-02-09-MS251211L03_exp251204_MS69_SCGE_1.5hr-arrest_P_RNA	2x150	STAR-2.5.3a	S_pombe	13,314,660	0.49	4,088,760	336,582	114,957	10,525	0.17
2026-02-09-MS251211L03_exp251204_MS69_SCGE_1.5hr-arrest_P_RNA	2x150	STAR-2.5.3a	sacCer3	13,314,660	0.45	13,738,093	365,599	1,355,253	67,343	0.58
2026-02-09-MS251211L04_exp251204_MS69_SCGE_8hr-arrest_input_RNA	2x150	STAR-2.5.3a	S_pombe	12,598,467	0.52	3,806,105	225,157	429,586	13,272	0.18
2026-02-09-MS251211L04_exp251204_MS69_SCGE_8hr-arrest_input_RNA	2x150	STAR-2.5.3a	sacCer3	12,598,467	0.46	9,500,272	196,812	4,759,272	191,744	0.58
2026-02-09-MS251211L05_exp251204_MS69_SCGE_8hr-arrest_MandP_RNA	2x150	STAR-2.5.3a	S_pombe	11,844,417	0.50	3,483,209	308,431	422,736	11,428	0.18
2026-02-09-MS251211L05_exp251204_MS69_SCGE_8hr-arrest_MandP_RNA	2x150	STAR-2.5.3a	sacCer3	11,844,417	0.48	8,389,576	246,050	5,034,329	201,877	0.59
2026-02-09-MS251211L06_exp251204_MS69_SCGE_8hr-arrest_P_RNA	2x150	STAR-2.5.3a	S_pombe	15,126,411	0.45	5,217,434	422,576	234,327	13,643	0.19
2026-02-09-MS251211L06_exp251204_MS69_SCGE_8hr-arrest_P_RNA	2x150	STAR-2.5.3a	sacCer3	15,126,411	0.44	11,502,435	328,539	5,231,746	250,262	0.57

#	Exonic:	Intergenic:	Intronic:
2026-02-09-MS251211L01_exp251204_MS69_SCGE_1.5hr-arrest_input_RNA	0.91	0.08	0.00
2026-02-09-MS251211L02_exp251204_MS69_SCGE_1.5hr-arrest_MandP_RNA	0.91	0.09	0.00
2026-02-09-MS251211L03_exp251204_MS69_SCGE_1.5hr-arrest_P_RNA	0.92	0.08	0.00
2026-02-09-MS251211L04_exp251204_MS69_SCGE_8hr-arrest_input_RNA	0.92	0.08	0.00
2026-02-09-MS251211L05_exp251204_MS69_SCGE_8hr-arrest_MandP_RNA	0.91	0.09	0.00
2026-02-09-MS251211L06_exp251204_MS69_SCGE_8hr-arrest_P_RNA	0.91	0.09	0.00

COVERAGE

Coverage of genes; >1000bp, sacCer3



Coverage of genes; >1000bp, sacCer3

