

# MAPPING STATS

Library	Read Length	Mapping	Species	Raw fragments	Complexity	Unique	Unique Splices	Multi	Multi Splices	Fraction mapped
RPE1-SS111-1	2x51	STAR-2.5.3a	hg38	8,819,432	0.43	5,059,053	845,275	2,579,148	282,562	0.50
RPE1-SS111-2	2x51	STAR-2.5.3a	hg38	11,911,555	0.42	7,448,585	1,385,013	2,712,576	284,252	0.50
RPE1-SS111-3	2x51	STAR-2.5.3a	hg38	10,528,341	0.43	6,228,491	1,084,504	2,950,112	206,370	0.50
RPE1-SS119-1	2x51	STAR-2.5.3a	hg38	8,877,208	0.46	5,223,447	858,453	2,534,774	203,256	0.50
RPE1-SS119-2	2x51	STAR-2.5.3a	hg38	12,750,096	0.43	7,727,774	1,376,633	3,307,824	247,434	0.50
RPE1-SS119-3	2x51	STAR-2.5.3a	hg38	9,332,908	0.48	5,621,323	972,287	2,493,934	183,549	0.50
RPE1-SS48-1	2x51	STAR-2.5.3a	hg38	11,536,932	0.53	7,434,799	1,228,222	2,553,949	242,865	0.50
RPE1-SS48-2	2x51	STAR-2.5.3a	hg38	8,689,258	0.56	5,727,590	958,660	1,768,735	181,165	0.50
RPE1-SS48-3	2x51	STAR-2.5.3a	hg38	9,946,408	0.55	5,253,415	849,113	3,604,860	168,400	0.50
RPE1-SS51-1	2x51	STAR-2.5.3a	hg38	14,146,104	0.39	7,628,514	1,303,088	4,864,232	251,754	0.50
RPE1-SS51-2	2x51	STAR-2.5.3a	hg38	15,790,988	0.34	8,084,197	1,278,808	5,992,808	339,443	0.50
RPE1-SS51-3	2x51	STAR-2.5.3a	hg38	6,202,457	0.46	3,607,846	612,049	1,836,852	109,996	0.50
RPE1-SS6-1	2x51	STAR-2.5.3a	hg38	10,939,173	0.56	6,747,296	1,040,332	2,878,883	212,858	0.50
RPE1-SS6-2	2x51	STAR-2.5.3a	hg38	12,301,268	0.53	8,225,883	1,258,091	2,484,866	233,137	0.50
RPE1-SS6-3	2x51	STAR-2.5.3a	hg38	12,421,542	0.53	7,977,570	1,249,081	2,868,606	232,141	0.50
RPE1-SS77-1	2x51	STAR-2.5.3a	hg38	11,160,852	0.45	2,950,262	378,871	7,556,985	179,664	0.50
RPE1-SS77-2	2x51	STAR-2.5.3a	hg38	5,232,055	0.46	2,510,495	346,476	2,264,777	67,896	0.50
RPE1-SS77-3	2x51	STAR-2.5.3a	hg38	14,893,775	0.43	3,908,562	552,015	10,138,503	154,010	0.50

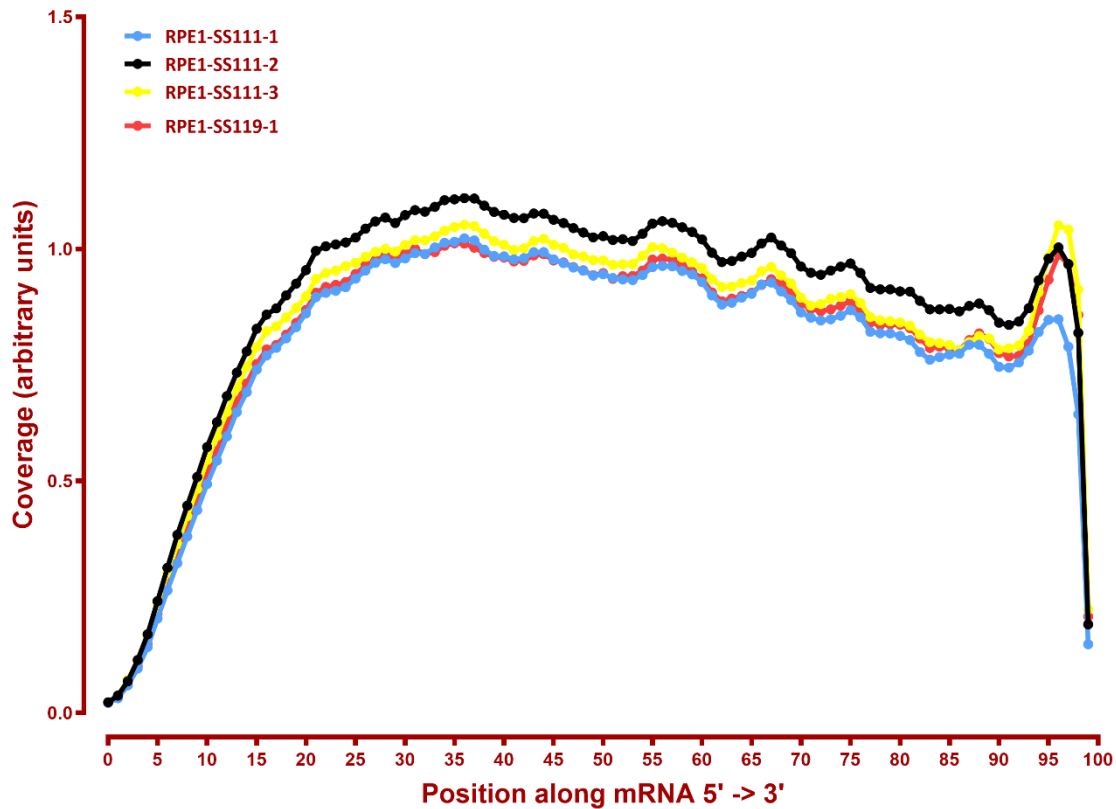
# RIBOSOMAL RNA MAPPING READS

#	fraction rRNA
RPE1-SS111-1	0.05
RPE1-SS111-2	0.02
RPE1-SS111-3	0.05
RPE1-SS119-1	0.04
RPE1-SS119-2	0.04
RPE1-SS119-3	0.04
RPE1-SS48-1	0.03
RPE1-SS48-2	0.03
RPE1-SS48-3	0.18
RPE1-SS51-1	0.06
RPE1-SS51-2	0.04
RPE1-SS51-3	0.02
RPE1-SS6-1	0.10
RPE1-SS6-2	0.01
RPE1-SS6-3	0.03
RPE1-SS77-1	0.52
RPE1-SS77-2	0.12
RPE1-SS77-3	0.53

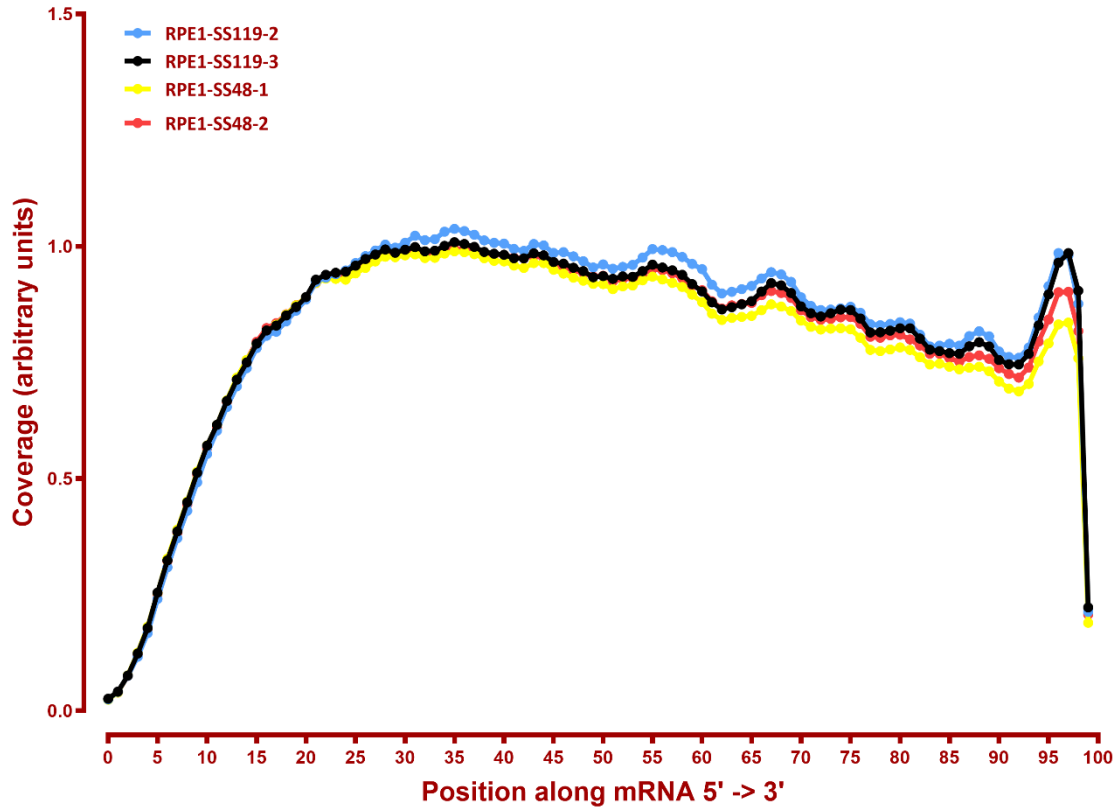
#	Exonic:	Intergenic:	Intronic:
RPE1-SS111-1	0.88	0.02	0.10
RPE1-SS111-2	0.89	0.02	0.09
RPE1-SS111-3	0.90	0.02	0.09
RPE1-SS119-1	0.88	0.01	0.10
RPE1-SS119-2	0.88	0.02	0.10
RPE1-SS119-3	0.88	0.02	0.10
RPE1-SS48-1	0.85	0.02	0.13
RPE1-SS48-2	0.86	0.02	0.12
RPE1-SS48-3	0.86	0.02	0.12
RPE1-SS51-1	0.88	0.02	0.11
RPE1-SS51-2	0.88	0.02	0.10
RPE1-SS51-3	0.89	0.02	0.09
RPE1-SS6-1	0.83	0.02	0.15
RPE1-SS6-2	0.83	0.02	0.15
RPE1-SS6-3	0.82	0.02	0.15
RPE1-SS77-1	0.88	0.01	0.10
RPE1-SS77-2	0.87	0.02	0.12
RPE1-SS77-3	0.89	0.01	0.10

# COVERAGE

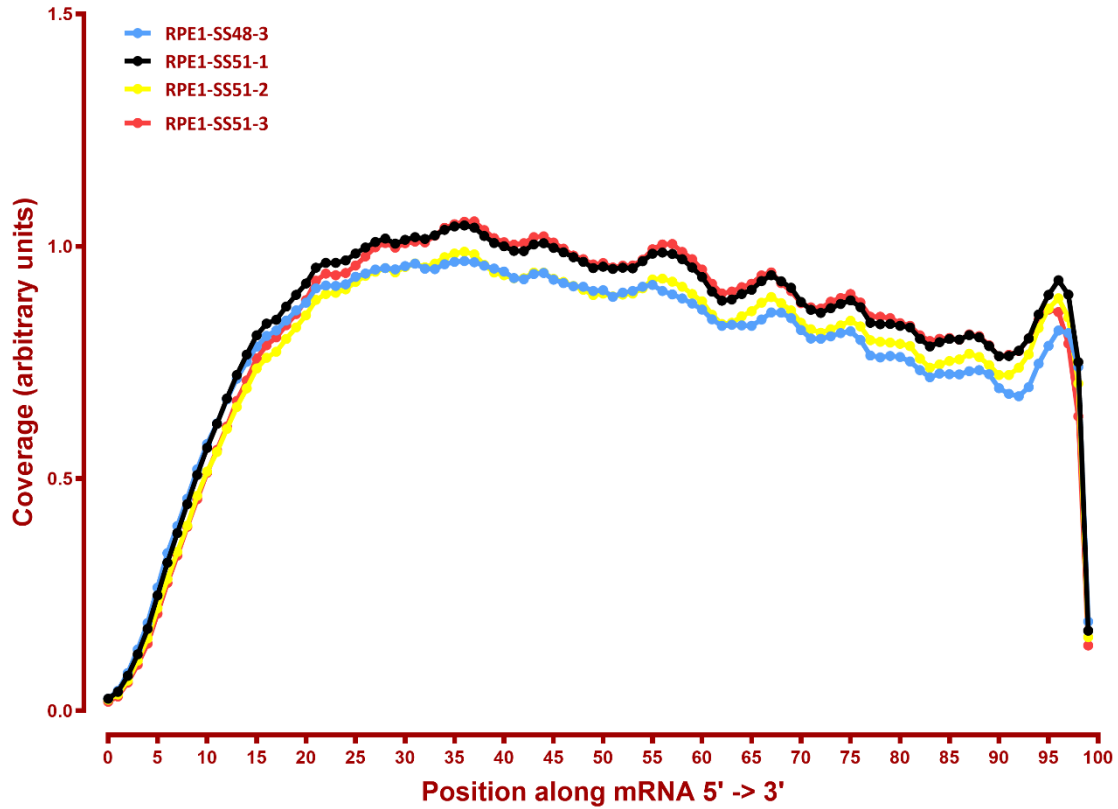
## Coverage of genes; >1000bp, sacCer3



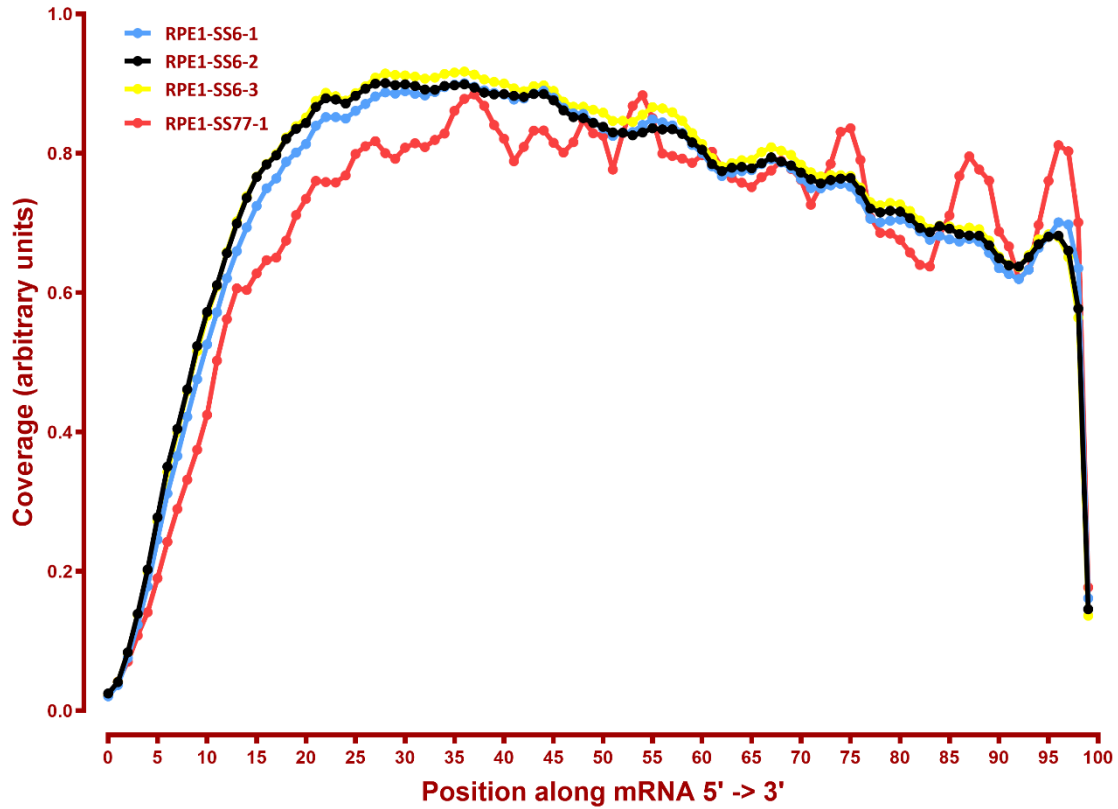
### Coverage of genes; >1000bp, sacCer3



### Coverage of genes; >1000bp, sacCer3



### Coverage of genes; >1000bp, sacCer3



### Coverage of genes; >1000bp, sacCer3

