

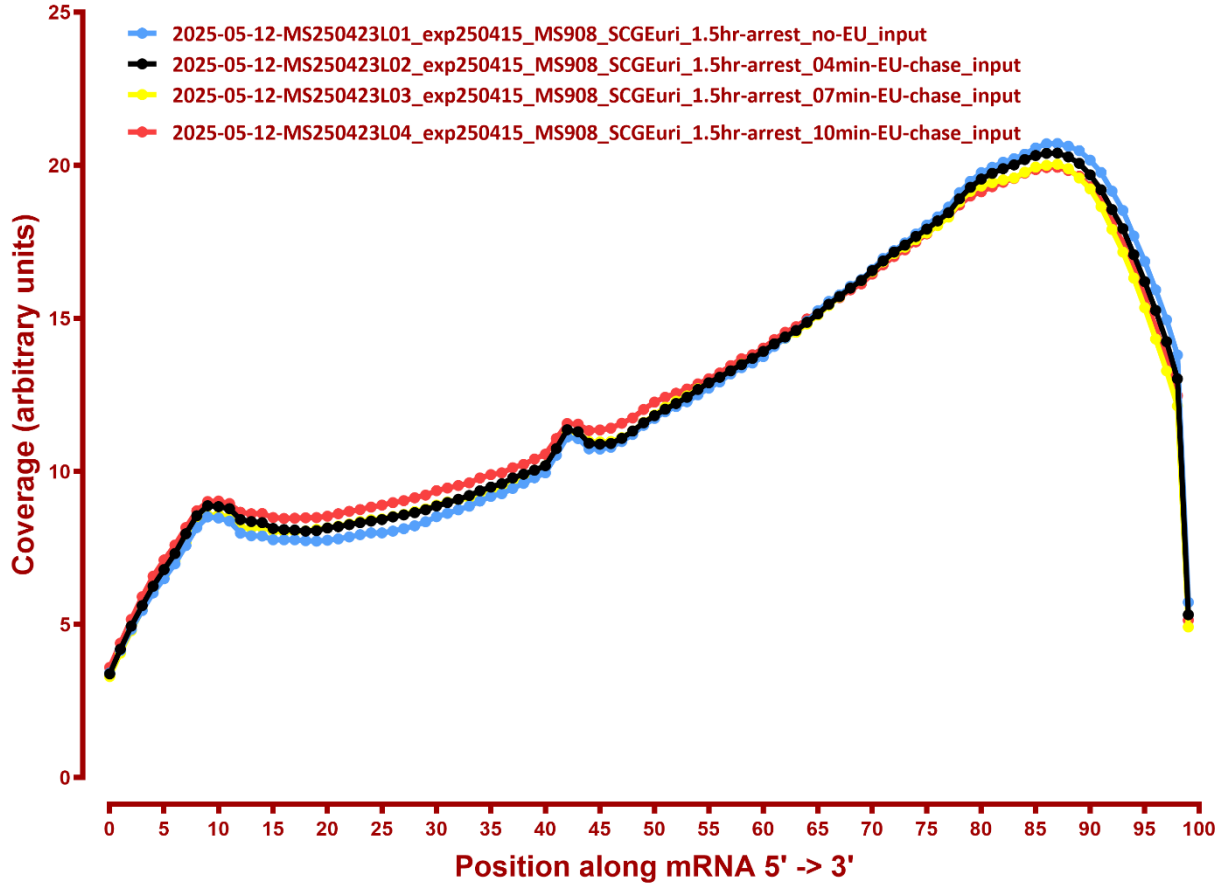
MAPPING STATS

Library	Read Length	Mapping	Species	Raw fragments	Complexity	Unique	Unique Splices	Multi	Multi Splices	Fraction mapped
2025-05-12-MS250423L01_exp250415_MS908_SCGEur_i_1.5hr-arrest_no-EU_input	2x150	STAR-2.5.3a	S.pombe	2,049,870	0.74	1,262,569	101,749	49,839	2,555	0.35
2025-05-12-MS250423L01_exp250415_MS908_SCGEur_i_1.5hr-arrest_no-EU_input	2x150	STAR-2.5.3a	sacCer3	2,049,870	0.77	1,641,359	33,979	114,035	2,731	0.44
2025-05-12-MS250423L02_exp250415_MS908_SCGEur_i_1.5hr-arrest_04min-EU-chase_input	2x150	STAR-2.5.3a	S.pombe	1,971,328	0.75	1,311,716	106,720	54,329	3,157	0.37
2025-05-12-MS250423L02_exp250415_MS908_SCGEur_i_1.5hr-arrest_04min-EU-chase_input	2x150	STAR-2.5.3a	sacCer3	1,971,328	0.78	1,418,558	29,888	102,681	2,229	0.39
2025-05-12-MS250423L03_exp250415_MS908_SCGEur_i_1.5hr-arrest_07min-EU-chase_input	2x150	STAR-2.5.3a	S.pombe	2,069,955	0.74	1,442,069	118,189	65,019	3,469	0.39
2025-05-12-MS250423L03_exp250415_MS908_SCGEur_i_1.5hr-arrest_07min-EU-chase_input	2x150	STAR-2.5.3a	sacCer3	2,069,955	0.77	1,418,965	31,919	107,167	2,269	0.38
2025-05-12-MS250423L04_exp250415_MS908_SCGEur_i_1.5hr-arrest_10min-EU-chase_input	2x150	STAR-2.5.3a	S.pombe	2,567,646	0.72	1,814,958	145,626	73,418	4,572	0.40
2025-05-12-MS250423L04_exp250415_MS908_SCGEur_i_1.5hr-arrest_10min-EU-chase_input	2x150	STAR-2.5.3a	sacCer3	2,567,646	0.75	1,845,443	38,863	138,388	3,222	0.39
2025-05-12-MS250423L05_exp250415_MS908_SCGEur_i_1.5hr-arrest_13min-EU-chase_input	2x150	STAR-2.5.3a	S.pombe	2,337,702	0.75	1,545,601	130,731	62,186	3,498	0.37
2025-05-12-MS250423L05_exp250415_MS908_SCGEur_i_1.5hr-arrest_13min-EU-chase_input	2x150	STAR-2.5.3a	sacCer3	2,337,702	0.79	1,505,430	32,274	110,355	2,293	0.35
2025-05-12-MS250423L06_exp250415_MS908_SCGEur_i_1.5hr-arrest_18min-EU-chase_input	2x150	STAR-2.5.3a	S.pombe	2,256,500	0.73	1,638,132	135,408	69,436	3,590	0.41
2025-05-12-MS250423L06_exp250415_MS908_SCGEur_i_1.5hr-arrest_18min-EU-chase_input	2x150	STAR-2.5.3a	sacCer3	2,256,500	0.78	1,520,738	30,488	115,041	2,145	0.37
2025-05-12-MS250423L07_exp250415_MS908_SCGEur_i_1.5hr-arrest_28min-EU-chase_input	2x150	STAR-2.5.3a	S.pombe	2,827,659	0.71	2,070,082	170,050	78,721	5,807	0.41
2025-05-12-MS250423L07_exp250415_MS908_SCGEur_i_1.5hr-arrest_28min-EU-chase_input	2x150	STAR-2.5.3a	sacCer3	2,827,659	0.76	1,934,205	38,017	133,918	2,824	0.37
2025-05-12-MS250423L08_exp250415_MS908_SCGEur_i_1.5hr-arrest_44min-EU-chase_input	2x150	STAR-2.5.3a	S.pombe	2,687,833	0.72	1,913,266	161,694	77,166	5,308	0.40
2025-05-12-MS250423L08_exp250415_MS908_SCGEur_i_1.5hr-arrest_44min-EU-chase_input	2x150	STAR-2.5.3a	sacCer3	2,687,833	0.76	1,817,562	34,210	130,340	2,670	0.37
2025-05-12-MS250423L09_exp250415_MS908_SCGEur_i_7.5hr-arrest_no-EU_input	2x150	STAR-2.5.3a	S.pombe	2,402,856	0.73	1,753,250	142,062	72,720	4,044	0.41
2025-05-12-MS250423L09_exp250415_MS908_SCGEur_i_7.5hr-arrest_no-EU_input	2x150	STAR-2.5.3a	sacCer3	2,402,856	0.76	1,498,710	33,408	193,637	4,261	0.36
2025-05-12-MS250423L10_exp250415_MS908_SCGEur_i_7.5hr-arrest_04min-EU-chase_input	2x150	STAR-2.5.3a	S.pombe	2,550,397	0.72	1,950,743	159,509	76,639	6,097	0.43
2025-05-12-MS250423L10_exp250415_MS908_SCGEur_i_7.5hr-arrest_04min-EU-chase_input	2x150	STAR-2.5.3a	sacCer3	2,550,397	0.75	1,554,049	36,065	181,057	3,771	0.35
2025-05-12-MS250423L11_exp250415_MS908_SCGEur_i_7.5hr-arrest_07min-EU-chase_input	2x150	STAR-2.5.3a	S.pombe	2,205,414	0.74	1,653,971	136,787	60,769	4,469	0.42
2025-05-12-MS250423L11_exp250415_MS908_SCGEur_i_7.5hr-arrest_07min-EU-chase_input	2x150	STAR-2.5.3a	sacCer3	2,205,414	0.77	1,372,191	30,957	152,429	3,105	0.35
2025-05-12-MS250423L12_exp250415_MS908_SCGEur_i_7.5hr-arrest_10min-EU-chase_input	2x150	STAR-2.5.3a	S.pombe	2,641,450	0.73	2,032,276	162,918	77,365	6,319	0.43
2025-05-12-MS250423L12_exp250415_MS908_SCGEur_i_7.5hr-arrest_10min-EU-chase_input	2x150	STAR-2.5.3a	sacCer3	2,641,450	0.77	1,597,972	35,102	183,604	4,834	0.34
2025-05-12-MS250423L13_exp250415_MS908_SCGEur_i_7.5hr-arrest_13min-EU-chase_input	2x150	STAR-2.5.3a	S.pombe	2,114,862	0.73	1,628,107	137,723	55,218	4,012	0.43
2025-05-12-MS250423L13_exp250415_MS908_SCGEur_i_7.5hr-arrest_13min-EU-chase_input	2x150	STAR-2.5.3a	sacCer3	2,114,862	0.77	1,302,308	28,982	137,978	3,646	0.35
2025-05-12-MS250423L14_exp250415_MS908_SCGEur_i_7.5hr-arrest_18min-EU-chase_input	2x150	STAR-2.5.3a	S.pombe	2,338,603	0.73	1,779,610	150,404	63,780	4,638	0.43
2025-05-12-MS250423L14_exp250415_MS908_SCGEur_i_7.5hr-arrest_18min-EU-chase_input	2x150	STAR-2.5.3a	sacCer3	2,338,603	0.77	1,446,764	32,126	162,123	3,615	0.35
2025-05-12-MS250423L15_exp250415_MS908_SCGEur_i_7.5hr-arrest_28min-EU-chase_input	2x150	STAR-2.5.3a	S.pombe	2,337,685	0.73	1,737,284	146,038	65,998	4,520	0.42
2025-05-12-MS250423L15_exp250415_MS908_SCGEur_i_7.5hr-arrest_28min-EU-chase_input	2x150	STAR-2.5.3a	sacCer3	2,337,685	0.77	1,394,817	29,907	167,435	3,449	0.34
2025-05-12-MS250423L16_exp250415_MS908_SCGEur_i_7.5hr-arrest_44min-EU-chase_input	2x150	STAR-2.5.3a	S.pombe	2,383,375	0.73	1,855,576	152,454	64,849	4,855	0.44
2025-05-12-MS250423L16_exp250415_MS908_SCGEur_i_7.5hr-arrest_44min-EU-chase_input	2x150	STAR-2.5.3a	sacCer3	2,383,375	0.77	1,508,415	28,781	173,356	3,616	0.36

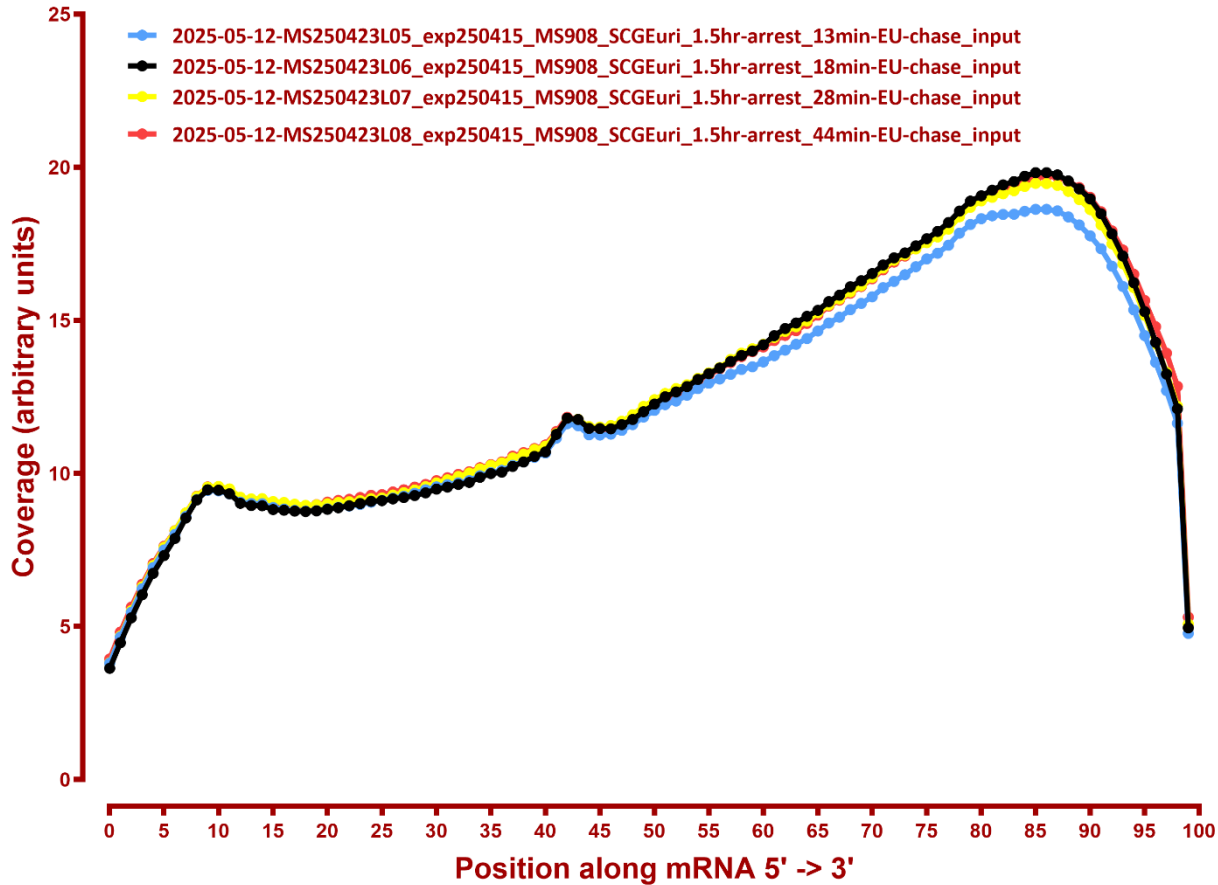
2025-05-12-MS250423L17_exp250415_MS908_SCGEuri_1.5hr-arrest_no-EU_EU-enrich	2x150	STAR-2.5.3a	S.pombe	16,095,567	0.57	22,512,937	1,194,919	517,940	75,902	0.75
2025-05-12-MS250423L17_exp250415_MS908_SCGEuri_1.5hr-arrest_no-EU_EU-enrich	2x150	STAR-2.5.3a	sacCer3	16,095,567	0.73	281,448	4,156	86,082	982	0.01
2025-05-12-MS250423L18_exp250415_MS908_SCGEuri_1.5hr-arrest_04min-EU-chase_EU-enrich	2x150	STAR-2.5.3a	S.pombe	16,641,947	0.59	20,587,698	1,106,868	491,043	65,191	0.67
2025-05-12-MS250423L18_exp250415_MS908_SCGEuri_1.5hr-arrest_04min-EU-chase_EU-enrich	2x150	STAR-2.5.3a	sacCer3	16,641,947	0.72	3,718,455	53,887	269,075	7,179	0.12
2025-05-12-MS250423L19_exp250415_MS908_SCGEuri_1.5hr-arrest_07min-EU-chase_EU-enrich	2x150	STAR-2.5.3a	S.pombe	13,660,895	0.60	17,801,253	944,251	434,968	54,774	0.70
2025-05-12-MS250423L19_exp250415_MS908_SCGEuri_1.5hr-arrest_07min-EU-chase_EU-enrich	2x150	STAR-2.5.3a	sacCer3	13,660,895	0.74	2,436,391	35,513	187,995	5,311	0.10
2025-05-12-MS250423L20_exp250415_MS908_SCGEuri_1.5hr-arrest_10min-EU-chase_EU-enrich	2x150	STAR-2.5.3a	S.pombe	13,014,123	0.62	17,168,966	908,862	407,599	58,967	0.71
2025-05-12-MS250423L20_exp250415_MS908_SCGEuri_1.5hr-arrest_10min-EU-chase_EU-enrich	2x150	STAR-2.5.3a	sacCer3	13,014,123	0.77	1,928,530	28,822	155,912	3,490	0.08
2025-05-12-MS250423L21_exp250415_MS908_SCGEuri_1.5hr-arrest_13min-EU-chase_EU-enrich	2x150	STAR-2.5.3a	S.pombe	14,079,650	0.59	19,150,969	1,023,081	440,916	60,152	0.73
2025-05-12-MS250423L21_exp250415_MS908_SCGEuri_1.5hr-arrest_13min-EU-chase_EU-enrich	2x150	STAR-2.5.3a	sacCer3	14,079,650	0.75	1,656,865	24,171	136,817	3,025	0.06
2025-05-12-MS250423L22_exp250415_MS908_SCGEuri_1.5hr-arrest_18min-EU-chase_EU-enrich	2x150	STAR-2.5.3a	S.pombe	14,038,951	0.59	19,433,720	1,029,788	465,872	60,912	0.75
2025-05-12-MS250423L22_exp250415_MS908_SCGEuri_1.5hr-arrest_18min-EU-chase_EU-enrich	2x150	STAR-2.5.3a	sacCer3	14,038,951	0.77	1,344,571	17,857	136,030	2,706	0.05
2025-05-12-MS250423L23_exp250415_MS908_SCGEuri_1.5hr-arrest_28min-EU-chase_EU-enrich	2x150	STAR-2.5.3a	S.pombe	16,440,458	0.58	22,213,522	1,179,036	525,517	72,317	0.73
2025-05-12-MS250423L23_exp250415_MS908_SCGEuri_1.5hr-arrest_28min-EU-chase_EU-enrich	2x150	STAR-2.5.3a	sacCer3	16,440,458	0.77	1,075,270	14,638	121,931	1,939	0.04
2025-05-12-MS250423L24_exp250415_MS908_SCGEuri_1.5hr-arrest_44min-EU-chase_EU-enrich	2x150	STAR-2.5.3a	S.pombe	15,874,010	0.54	22,489,110	1,197,698	524,944	70,782	0.76
2025-05-12-MS250423L24_exp250415_MS908_SCGEuri_1.5hr-arrest_44min-EU-chase_EU-enrich	2x150	STAR-2.5.3a	sacCer3	15,874,010	0.73	747,902	9,746	113,561	2,377	0.03
2025-05-12-MS250423L25_exp250415_MS908_SCGEuri_7.5hr-arrest_no-EU_EU-enrich	2x150	STAR-2.5.3a	S.pombe	13,622,728	0.60	18,838,912	969,304	433,218	57,924	0.75
2025-05-12-MS250423L25_exp250415_MS908_SCGEuri_7.5hr-arrest_no-EU_EU-enrich	2x150	STAR-2.5.3a	sacCer3	13,622,728	0.74	239,886	5,046	84,769	1,419	0.01
2025-05-12-MS250423L26_exp250415_MS908_SCGEuri_7.5hr-arrest_04min-EU-chase_EU-enrich	2x150	STAR-2.5.3a	S.pombe	16,654,027	0.61	16,005,980	857,296	360,475	44,309	0.52
2025-05-12-MS250423L26_exp250415_MS908_SCGEuri_7.5hr-arrest_04min-EU-chase_EU-enrich	2x150	STAR-2.5.3a	sacCer3	16,654,027	0.74	2,091,330	31,212	188,456	5,896	0.07
2025-05-12-MS250423L27_exp250415_MS908_SCGEuri_7.5hr-arrest_07min-EU-chase_EU-enrich	2x150	STAR-2.5.3a	S.pombe	16,913,318	0.56	22,718,449	1,218,671	495,199	73,285	0.72
2025-05-12-MS250423L27_exp250415_MS908_SCGEuri_7.5hr-arrest_07min-EU-chase_EU-enrich	2x150	STAR-2.5.3a	sacCer3	16,913,318	0.69	2,664,490	37,354	249,316	6,984	0.09
2025-05-12-MS250423L28_exp250415_MS908_SCGEuri_7.5hr-arrest_10min-EU-chase_EU-enrich	2x150	STAR-2.5.3a	S.pombe	14,706,130	0.58	19,239,669	1,007,855	426,663	59,311	0.70
2025-05-12-MS250423L28_exp250415_MS908_SCGEuri_7.5hr-arrest_10min-EU-chase_EU-enrich	2x150	STAR-2.5.3a	sacCer3	14,706,130	0.71	1,752,683	26,635	187,802	6,260	0.07
2025-05-12-MS250423L29_exp250415_MS908_SCGEuri_7.5hr-arrest_13min-EU-chase_EU-enrich	2x150	STAR-2.5.3a	S.pombe	13,779,797	0.58	19,197,959	1,039,905	415,672	62,926	0.75
2025-05-12-MS250423L29_exp250415_MS908_SCGEuri_7.5hr-arrest_13min-EU-chase_EU-enrich	2x150	STAR-2.5.3a	sacCer3	13,779,797	0.72	1,519,237	23,255	165,179	5,393	0.06
2025-05-12-MS250423L30_exp250415_MS908_SCGEuri_7.5hr-arrest_18min-EU-chase_EU-enrich	2x150	STAR-2.5.3a	S.pombe	18,125,467	0.55	24,714,774	1,321,862	564,510	77,942	0.74
2025-05-12-MS250423L30_exp250415_MS908_SCGEuri_7.5hr-arrest_18min-EU-chase_EU-enrich	2x150	STAR-2.5.3a	sacCer3	18,125,467	0.71	1,378,748	20,382	199,405	4,523	0.04
2025-05-12-MS250423L31_exp250415_MS908_SCGEuri_7.5hr-arrest_28min-EU-chase_EU-enrich	2x150	STAR-2.5.3a	S.pombe	15,720,371	0.56	21,705,366	1,141,500	480,343	66,161	0.74
2025-05-12-MS250423L31_exp250415_MS908_SCGEuri_7.5hr-arrest_28min-EU-chase_EU-enrich	2x150	STAR-2.5.3a	sacCer3	15,720,371	0.71	781,103	11,759	141,548	2,624	0.03
2025-05-12-MS250423L32_exp250415_MS908_SCGEuri_7.5hr-arrest_44min-EU-chase_EU-enrich	2x150	STAR-2.5.3a	S.pombe	16,464,787	0.56	23,066,053	1,257,837	497,903	77,175	0.76
2025-05-12-MS250423L32_exp250415_MS908_SCGEuri_7.5hr-arrest_44min-EU-chase_EU-enrich	2x150	STAR-2.5.3a	sacCer3	16,464,787	0.74	663,369	10,697	124,158	1,728	0.02

COVERAGE

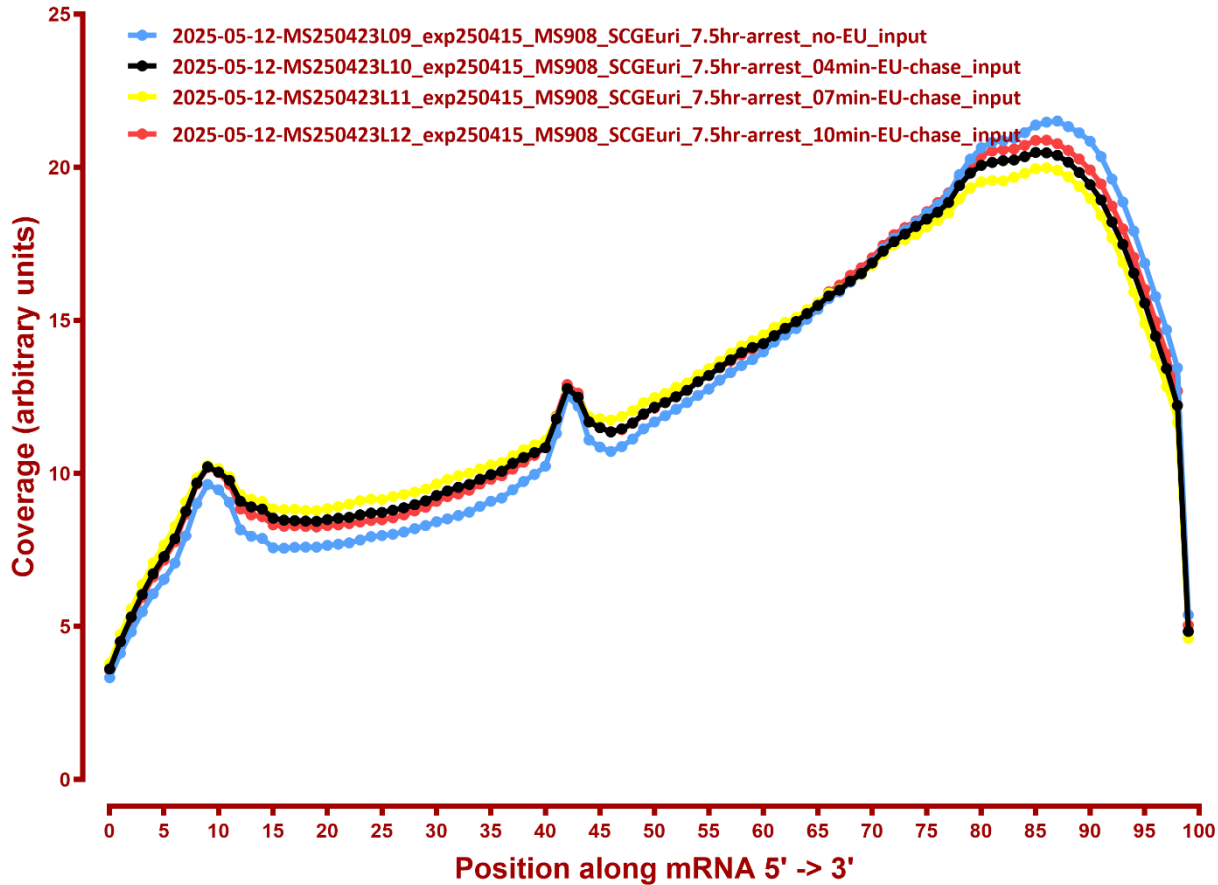
Coverage of genes; >1000bp, sacCer3



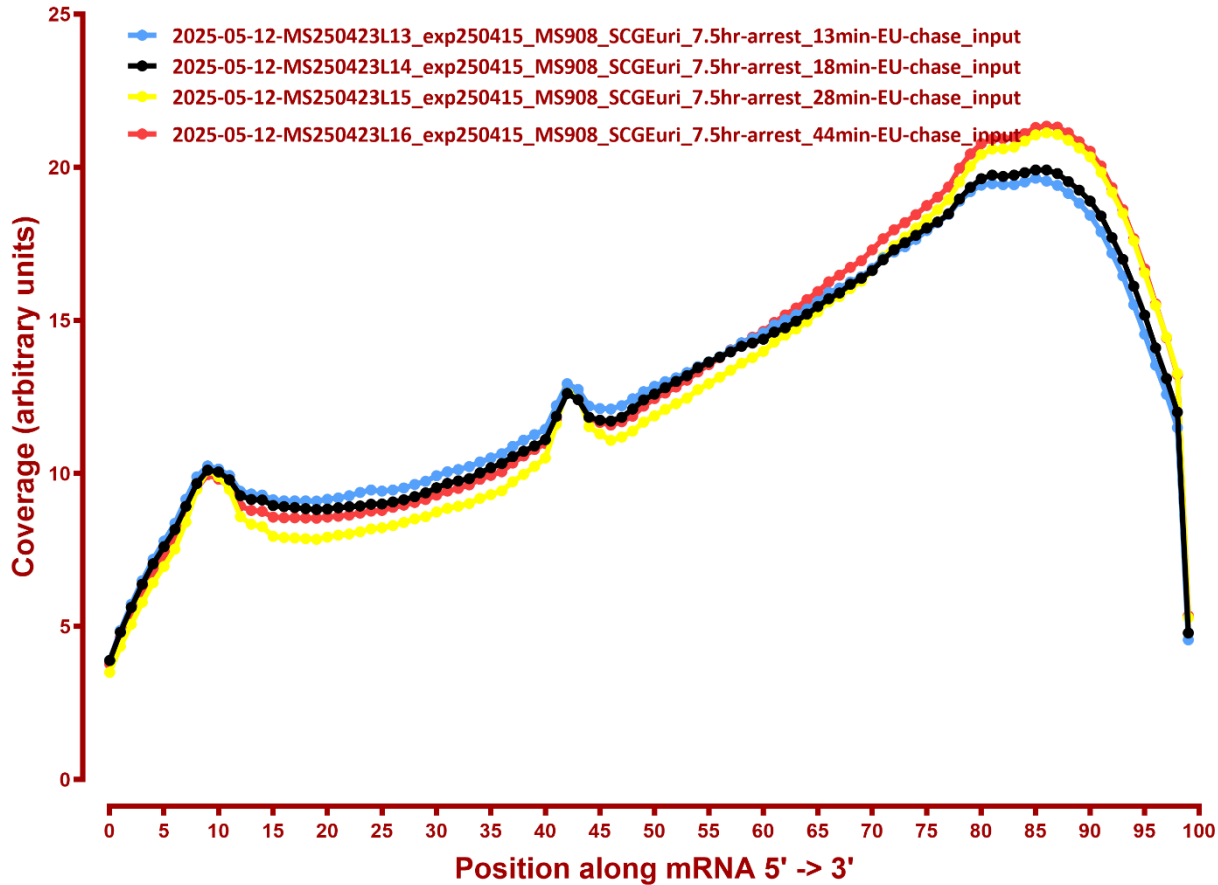
Coverage of genes; >1000bp, sacCer3



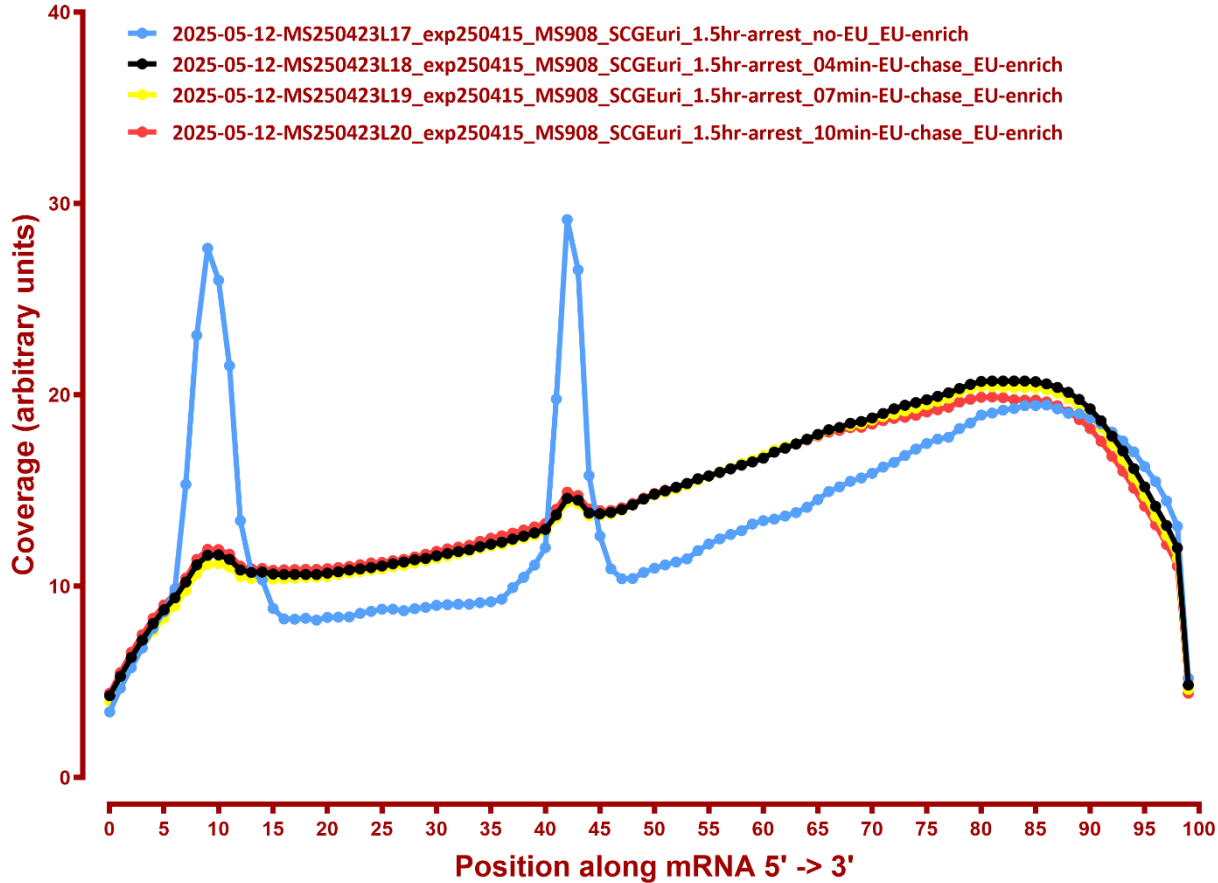
Coverage of genes; >1000bp, sacCer3



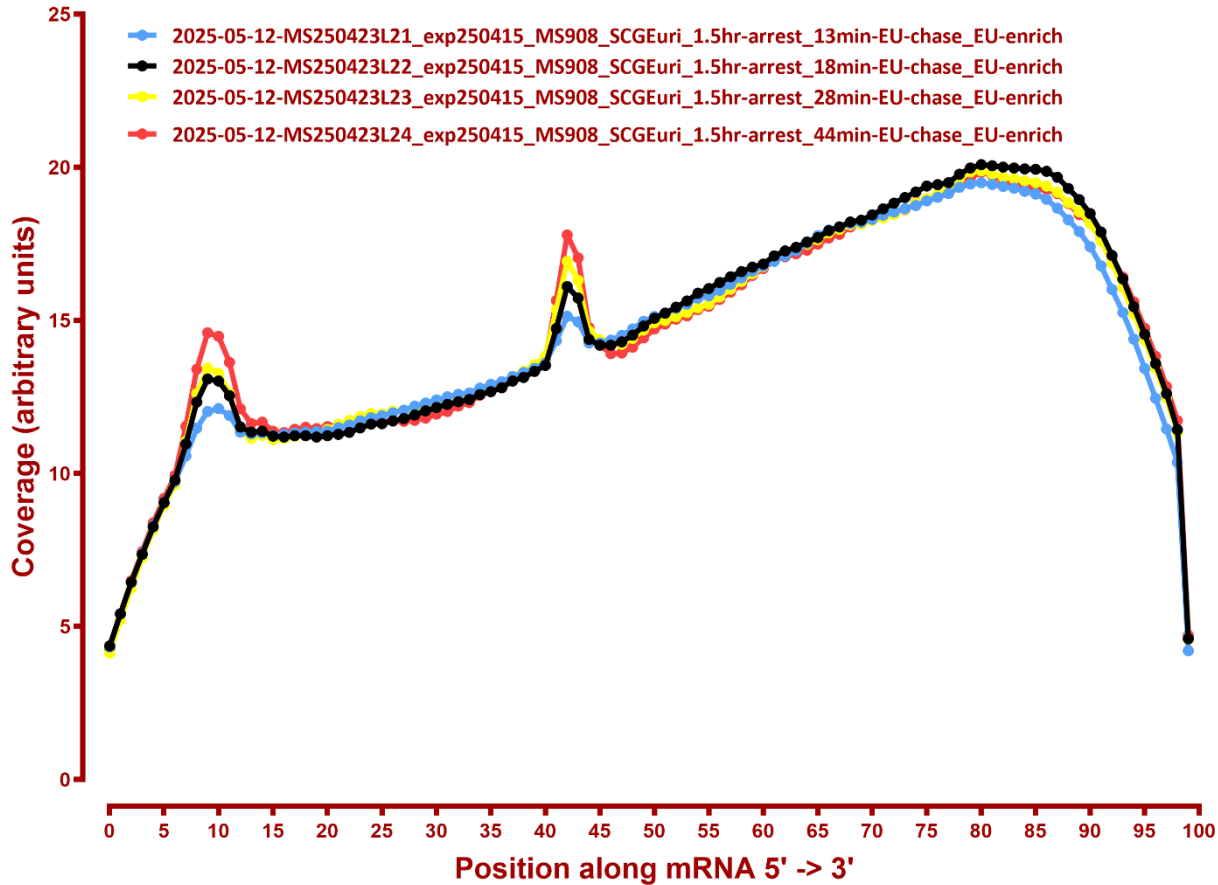
Coverage of genes; >1000bp, sacCer3



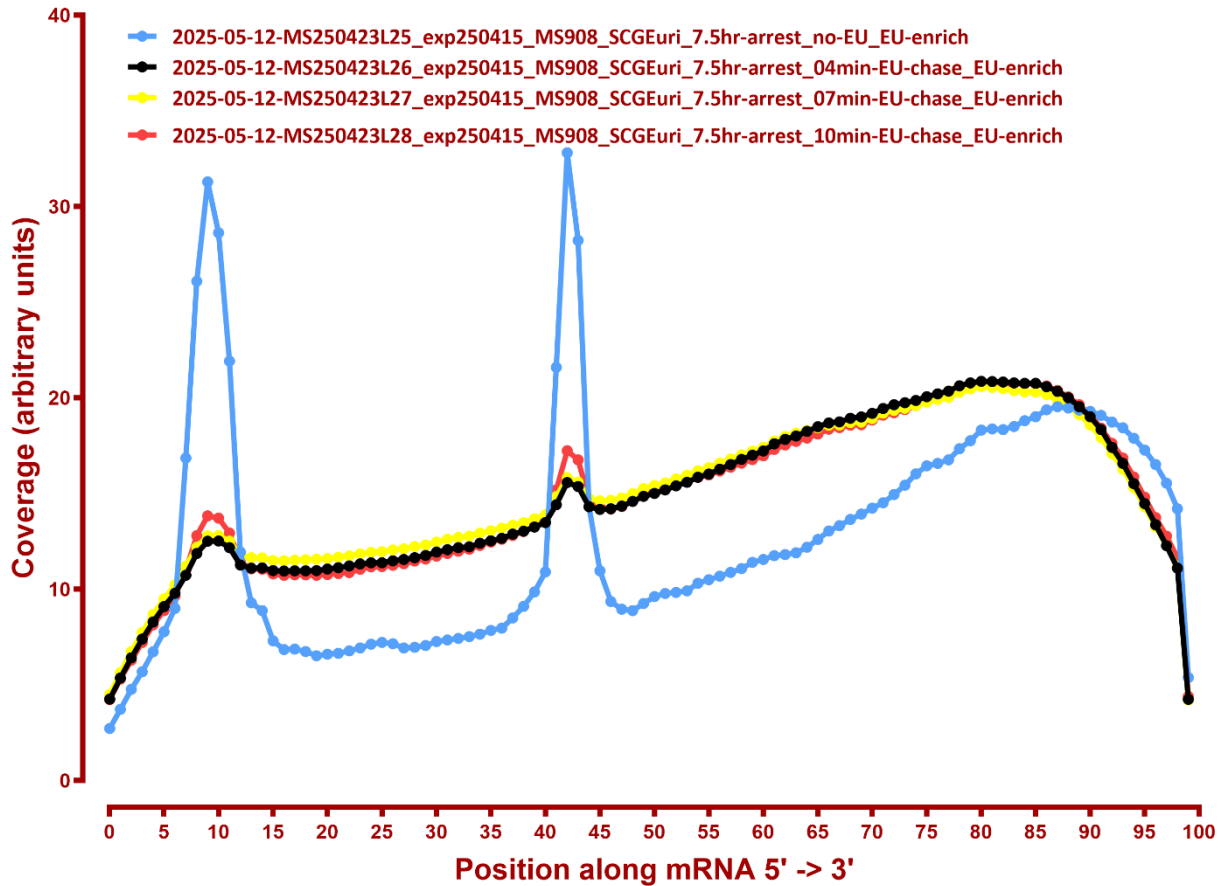
Coverage of genes; >1000bp, sacCer3



Coverage of genes; >1000bp, sacCer3



Coverage of genes; >1000bp, sacCer3



Coverage of genes; >1000bp, sacCer3

