

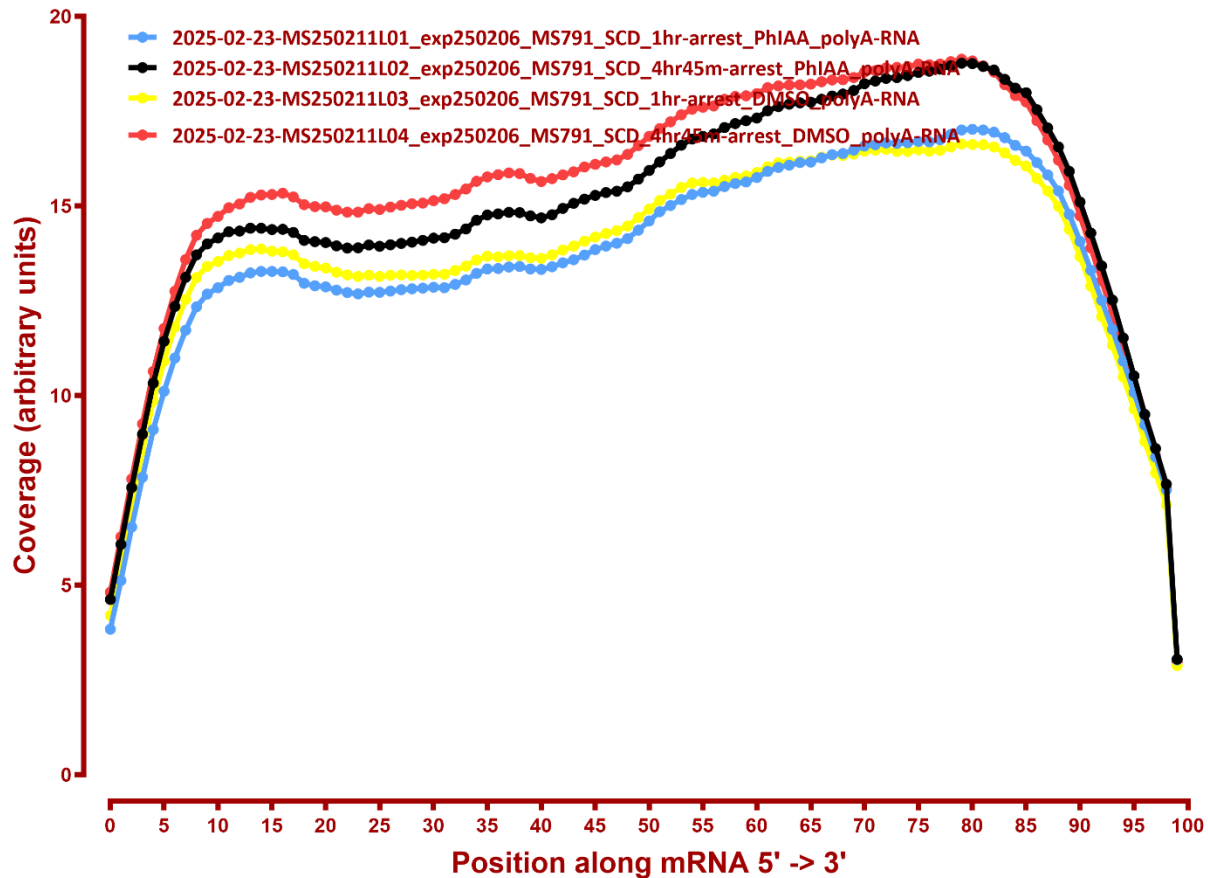
MAPPING STATS

Library	Read Length	Mapping	Species	Raw fragments	Complexity	Unique	Unique Splices	Multi	Multi Splices	Fraction mapped
2025-02-23-MS250211L01_exp250206_MS791_SCD_1hr-arrest_PhIAA_polyA-RNA	2x150	STAR-2.5.3a	Candida	11,817,311	0.61	8,523,171	134,307	126,795	14,457	0.37
2025-02-23-MS250211L01_exp250206_MS791_SCD_1hr-arrest_PhIAA_polyA-RNA	2x150	STAR-2.5.3a	sacCer3	11,817,311	0.57	10,074,703	305,825	738,986	18,736	0.47
2025-02-23-MS250211L02_exp250206_MS791_SCD_4hr45m-arrest_PhIAA_polyA-RNA	2x150	STAR-2.5.3a	Candida	13,692,567	0.59	11,810,846	191,626	182,811	21,695	0.45
2025-02-23-MS250211L02_exp250206_MS791_SCD_4hr45m-arrest_PhIAA_polyA-RNA	2x150	STAR-2.5.3a	sacCer3	13,692,567	0.59	9,209,779	216,515	1,125,911	42,151	0.39
2025-02-23-MS250211L03_exp250206_MS791_SCD_1hr-arrest_DMSO_polyA-RNA	2x150	STAR-2.5.3a	Candida	12,604,844	0.62	9,333,363	147,263	141,095	19,193	0.38
2025-02-23-MS250211L03_exp250206_MS791_SCD_1hr-arrest_DMSO_polyA-RNA	2x150	STAR-2.5.3a	sacCer3	12,604,844	0.59	10,122,950	303,050	761,006	21,764	0.44
2025-02-23-MS250211L04_exp250206_MS791_SCD_4hr45m-arrest_DMSO_polyA-RNA	2x150	STAR-2.5.3a	Candida	13,262,745	0.57	11,650,594	179,596	150,910	16,294	0.45
2025-02-23-MS250211L04_exp250206_MS791_SCD_4hr45m-arrest_DMSO_polyA-RNA	2x150	STAR-2.5.3a	sacCer3	13,262,745	0.57	9,831,924	181,582	1,179,858	44,674	0.42
2025-02-23-MS250211L05_exp250206_MS793_SCD_1hr-arrest_PhIAA_polyA-RNA	2x150	STAR-2.5.3a	Candida	20,317,928	0.58	13,420,691	216,281	197,716	24,508	0.34
2025-02-23-MS250211L05_exp250206_MS793_SCD_1hr-arrest_PhIAA_polyA-RNA	2x150	STAR-2.5.3a	sacCer3	20,317,928	0.53	17,429,551	532,381	1,205,764	39,854	0.47
2025-02-23-MS250211L06_exp250206_MS793_SCD_4hr35m-arrest_PhIAA_polyA-RNA	2x150	STAR-2.5.3a	Candida	19,211,606	0.59	13,259,759	216,303	195,802	23,782	0.36
2025-02-23-MS250211L06_exp250206_MS793_SCD_4hr35m-arrest_PhIAA_polyA-RNA	2x150	STAR-2.5.3a	sacCer3	19,211,606	0.54	15,751,197	417,143	1,573,732	57,510	0.46
2025-02-23-MS250211L07_exp250206_MS793_SCD_1hr-arrest_DMSO_polyA-RNA	2x150	STAR-2.5.3a	Candida	14,104,741	0.61	9,040,895	153,453	125,097	13,337	0.33
2025-02-23-MS250211L07_exp250206_MS793_SCD_1hr-arrest_DMSO_polyA-RNA	2x150	STAR-2.5.3a	sacCer3	14,104,741	0.55	12,864,029	413,371	858,755	28,317	0.50
2025-02-23-MS250211L08_exp250206_MS793_SCD_4hr35m-arrest_DMSO_polyA-RNA	2x150	STAR-2.5.3a	Candida	12,135,050	0.60	9,457,475	154,555	122,156	14,650	0.40
2025-02-23-MS250211L08_exp250206_MS793_SCD_4hr35m-arrest_DMSO_polyA-RNA	2x150	STAR-2.5.3a	sacCer3	12,135,050	0.57	10,071,594	240,682	937,826	33,214	0.46
2025-02-23-MS250211L09_exp250206_MS756_SCD_1hr-arrest_PhIAA_polyA-RNA	2x150	STAR-2.5.3a	Candida	12,345,948	0.63	7,974,992	137,706	115,852	12,432	0.33
2025-02-23-MS250211L09_exp250206_MS756_SCD_1hr-arrest_PhIAA_polyA-RNA	2x150	STAR-2.5.3a	sacCer3	12,345,948	0.56	9,857,808	364,918	751,499	26,019	0.45
2025-02-23-MS250211L10_exp250206_MS756_SCD_4hr45m-arrest_PhIAA_polyA-RNA	2x150	STAR-2.5.3a	Candida	15,367,581	0.59	11,665,255	196,847	161,648	21,942	0.39
2025-02-23-MS250211L10_exp250206_MS756_SCD_4hr45m-arrest_PhIAA_polyA-RNA	2x150	STAR-2.5.3a	sacCer3	15,367,581	0.52	11,996,809	427,643	1,263,749	41,305	0.45
2025-02-23-MS250211L11_exp250206_MS756_SCD_4hr45m-arrest_PhIAA-4hr35m_polyA-RNA	2x150	STAR-2.5.3a	Candida	12,540,922	0.62	9,624,729	162,077	140,430	19,362	0.40
2025-02-23-MS250211L11_exp250206_MS756_SCD_4hr45m-arrest_PhIAA-4hr35m_polyA-RNA	2x150	STAR-2.5.3a	sacCer3	12,540,922	0.55	9,535,367	338,045	980,526	31,882	0.43
2025-02-23-MS250211L12_exp250206_MS756_SCD_1hr-arrest-DMSO_polyA-RNA	2x150	STAR-2.5.3a	Candida	11,596,696	0.61	8,658,740	144,002	127,516	15,226	0.39
2025-02-23-MS250211L12_exp250206_MS756_SCD_1hr-arrest-DMSO_polyA-RNA	2x150	STAR-2.5.3a	sacCer3	11,596,696	0.58	9,359,295	295,105	641,064	18,118	0.44
2025-02-23-MS250211L13_exp250206_MS756_SCD_4hr45m-arrest_DMSO_polyA-RNA	2x150	STAR-2.5.3a	Candida	12,508,534	0.59	9,875,363	172,661	146,690	19,202	0.41
2025-02-23-MS250211L13_exp250206_MS756_SCD_4hr45m-arrest_DMSO_polyA-RNA	2x150	STAR-2.5.3a	sacCer3	12,508,534	0.56	9,643,663	281,057	968,540	33,802	0.44
2025-02-23-MS250211L14_exp250206_MS756_SCD_4hr45m-arrest_DMSO-4hr35m_polyA-RNA	2x150	STAR-2.5.3a	Candida	13,681,927	0.59	10,523,771	168,953	160,245	19,747	0.40
2025-02-23-MS250211L14_exp250206_MS756_SCD_4hr45m-arrest_DMSO-4hr35m_polyA-RNA	2x150	STAR-2.5.3a	sacCer3	13,681,927	0.55	10,719,721	297,345	1,102,576	43,866	0.44

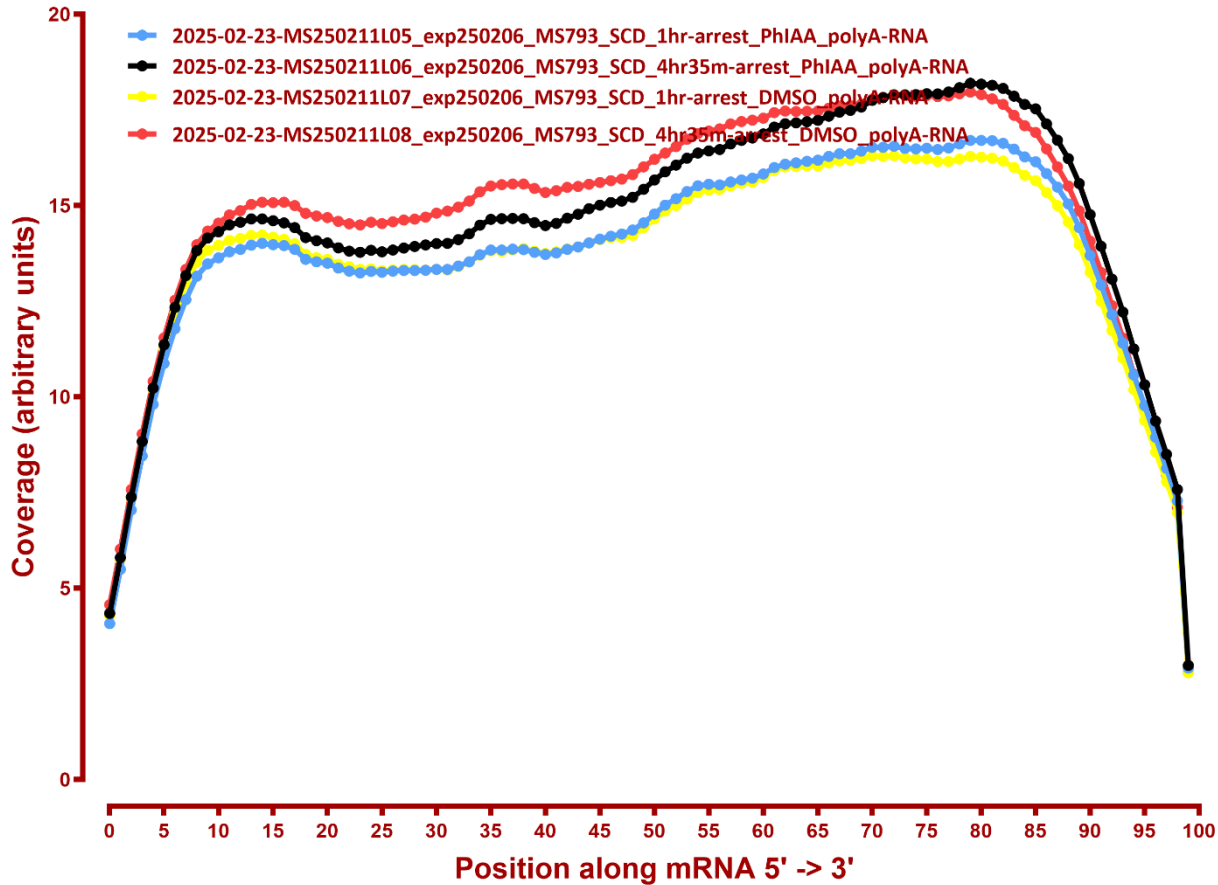
#	Exonic:	Intergenic:	Intronic:
2025-02-23-MS250211L01_exp250206_MS791_SCD_1hr-arrest_PhIAA_polyA-RNA	0.93	0.07	0.00
2025-02-23-MS250211L02_exp250206_MS791_SCD_4hr45m-arrest_PhIAA_polyA-RNA	0.93	0.07	0.00
2025-02-23-MS250211L03_exp250206_MS791_SCD_1hr-arrest_DMSO_polyA-RNA	0.93	0.06	0.00
2025-02-23-MS250211L04_exp250206_MS791_SCD_4hr45m-arrest_DMSO_polyA-RNA	0.93	0.07	0.00
2025-02-23-MS250211L05_exp250206_MS793_SCD_1hr-arrest_PhIAA_polyA-RNA	0.93	0.06	0.00
2025-02-23-MS250211L06_exp250206_MS793_SCD_4hr35m-arrest_PhIAA_polyA-RNA	0.93	0.06	0.00
2025-02-23-MS250211L07_exp250206_MS793_SCD_1hr-arrest_DMSO_polyA-RNA	0.93	0.06	0.00
2025-02-23-MS250211L08_exp250206_MS793_SCD_4hr35m-arrest_DMSO_polyA-RNA	0.93	0.06	0.00
2025-02-23-MS250211L09_exp250206_MS756_SCD_1hr-arrest_PhIAA_polyA-RNA	0.94	0.06	0.00
2025-02-23-MS250211L10_exp250206_MS756_SCD_4hr45m-arrest_PhIAA_polyA-RNA	0.94	0.06	0.00
2025-02-23-MS250211L11_exp250206_MS756_SCD_4hr45m-arrest_PhIAA-4hr35m_polyA-RNA	0.94	0.06	0.00
2025-02-23-MS250211L12_exp250206_MS756_SCD_1hr-arrest-DMSO_polyA-RNA	0.93	0.06	0.00
2025-02-23-MS250211L13_exp250206_MS756_SCD_4hr45m-arrest_DMSO_polyA-RNA	0.93	0.07	0.00
2025-02-23-MS250211L14_exp250206_MS756_SCD_4hr45m-arrest_DMSO-4hr35m_polyA-RNA	0.93	0.06	0.00

COVERAGE ALL READS

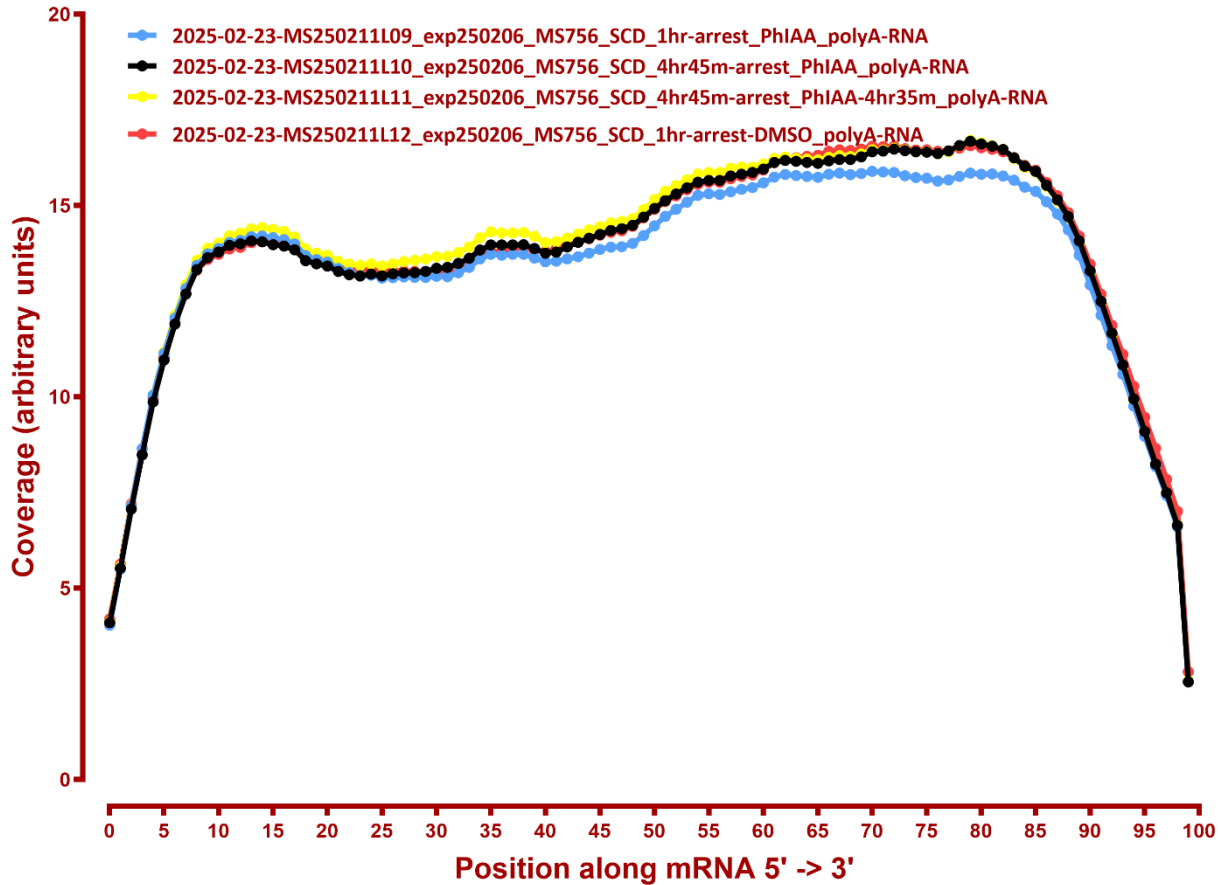
Coverage of genes; >1000bp, sacCer3



Coverage of genes; >1000bp, sacCer3



Coverage of genes; >1000bp, sacCer3



Coverage of genes; >1000bp, sacCer3

