

MAPPING STATS

Library	Read Length	Mapping	Species	Raw fragments	Complexity	Unique	Unique Splices	Multi	Multi Splices	Fraction mapped
2025-01-14-MS241218L01_exp241204_MS908_SCGEuri_1.5hr-arrest_no-EU_input	2x150	STAR-2.5.3a	S_pombe	2,415,757	0.64	1,725,551	131,039	54,491	4,035	0.40
2025-01-14-MS241218L01_exp241204_MS908_SCGEuri_1.5hr-arrest_no-EU_input	2x150	STAR-2.5.3a	sacCer3	2,415,757	0.67	2,232,373	40,715	133,669	2,793	0.50
2025-01-14-MS241218L02_exp241204_MS908_SCGEuri_1.5hr-arrest_04min-EU-chase_input	2x150	STAR-2.5.3a	S_pombe	2,072,221	0.66	1,505,402	117,688	51,355	3,041	0.40
2025-01-14-MS241218L02_exp241204_MS908_SCGEuri_1.5hr-arrest_04min-EU-chase_input	2x150	STAR-2.5.3a	sacCer3	2,072,221	0.70	1,787,956	34,408	115,716	2,508	0.47
2025-01-14-MS241218L03_exp241204_MS908_SCGEuri_1.5hr-arrest_07min-EU-chase_input	2x150	STAR-2.5.3a	S_pombe	2,395,947	0.64	1,832,315	140,047	60,811	4,745	0.43
2025-01-14-MS241218L03_exp241204_MS908_SCGEuri_1.5hr-arrest_07min-EU-chase_input	2x150	STAR-2.5.3a	sacCer3	2,395,947	0.67	2,062,024	39,102	127,159	1,813	0.47
2025-01-14-MS241218L04_exp241204_MS908_SCGEuri_1.5hr-arrest_10min-EU-chase_input	2x150	STAR-2.5.3a	S_pombe	1,894,672	0.65	1,494,764	108,552	47,406	3,266	0.44
2025-01-14-MS241218L04_exp241204_MS908_SCGEuri_1.5hr-arrest_10min-EU-chase_input	2x150	STAR-2.5.3a	sacCer3	1,894,672	0.70	1,635,615	29,193	100,100	1,960	0.47
2025-01-14-MS241218L05_exp241204_MS908_SCGEuri_1.5hr-arrest_13min-EU-chase_input	2x150	STAR-2.5.3a	S_pombe	2,398,144	0.65	1,816,010	139,034	62,243	3,925	0.42
2025-01-14-MS241218L05_exp241204_MS908_SCGEuri_1.5hr-arrest_13min-EU-chase_input	2x150	STAR-2.5.3a	sacCer3	2,398,144	0.69	2,029,696	36,044	130,525	2,545	0.46
2025-01-14-MS241218L06_exp241204_MS908_SCGEuri_1.5hr-arrest_18min-EU-chase_input	2x150	STAR-2.5.3a	S_pombe	1,901,514	0.65	1,483,720	113,146	54,023	3,575	0.44
2025-01-14-MS241218L06_exp241204_MS908_SCGEuri_1.5hr-arrest_18min-EU-chase_input	2x150	STAR-2.5.3a	sacCer3	1,901,514	0.70	1,590,496	28,246	104,971	2,399	0.45
2025-01-14-MS241218L07_exp241204_MS908_SCGEuri_1.5hr-arrest_28min-EU-chase_input	2x150	STAR-2.5.3a	S_pombe	2,129,613	0.67	1,645,819	126,395	56,413	3,551	0.43
2025-01-14-MS241218L07_exp241204_MS908_SCGEuri_1.5hr-arrest_28min-EU-chase_input	2x150	STAR-2.5.3a	sacCer3	2,129,613	0.71	1,784,969	30,457	114,708	2,434	0.45
2025-01-14-MS241218L08_exp241204_MS908_SCGEuri_1.5hr-arrest_44min-EU-chase_input	2x150	STAR-2.5.3a	S_pombe	2,007,832	0.67	1,577,317	118,819	52,562	3,456	0.44
2025-01-14-MS241218L08_exp241204_MS908_SCGEuri_1.5hr-arrest_44min-EU-chase_input	2x150	STAR-2.5.3a	sacCer3	2,007,832	0.72	1,655,748	25,768	101,313	2,361	0.44
2025-01-14-MS241218L09_exp241204_MS908_SCGEuri_7.5hr-arrest_no-EU_input	2x150	STAR-2.5.3a	S_pombe	2,248,113	0.64	1,982,864	149,682	59,424	3,974	0.49
2025-01-14-MS241218L09_exp241204_MS908_SCGEuri_7.5hr-arrest_no-EU_input	2x150	STAR-2.5.3a	sacCer3	2,248,113	0.68	1,637,319	32,659	156,730	2,492	0.41
2025-01-14-MS241218L10_exp241204_MS908_SCGEuri_7.5hr-arrest_04min-EU-chase_input	2x150	STAR-2.5.3a	S_pombe	2,194,844	0.61	2,069,065	151,523	62,731	5,063	0.52
2025-01-14-MS241218L10_exp241204_MS908_SCGEuri_7.5hr-arrest_04min-EU-chase_input	2x150	STAR-2.5.3a	sacCer3	2,194,844	0.66	1,612,906	30,346	144,297	2,543	0.41
2025-01-14-MS241218L11_exp241204_MS908_SCGEuri_7.5hr-arrest_07min-EU-chase_input	2x150	STAR-2.5.3a	S_pombe	2,346,305	0.64	2,133,582	164,528	68,883	4,463	0.51
2025-01-14-MS241218L11_exp241204_MS908_SCGEuri_7.5hr-arrest_07min-EU-chase_input	2x150	STAR-2.5.3a	sacCer3	2,346,305	0.69	1,598,755	33,619	156,006	3,058	0.38
2025-01-14-MS241218L12_exp241204_MS908_SCGEuri_7.5hr-arrest_10min-EU-chase_input	2x150	STAR-2.5.3a	S_pombe	2,165,272	0.65	1,973,836	151,804	65,300	4,728	0.51
2025-01-14-MS241218L12_exp241204_MS908_SCGEuri_7.5hr-arrest_10min-EU-chase_input	2x150	STAR-2.5.3a	sacCer3	2,165,272	0.69	1,472,778	29,790	142,742	3,246	0.38
2025-01-14-MS241218L13_exp241204_MS908_SCGEuri_7.5hr-arrest_13min-EU-chase_input	2x150	STAR-2.5.3a	S_pombe	2,004,362	0.65	1,846,621	139,411	60,657	4,007	0.51
2025-01-14-MS241218L13_exp241204_MS908_SCGEuri_7.5hr-arrest_13min-EU-chase_input	2x150	STAR-2.5.3a	sacCer3	2,004,362	0.70	1,352,529	25,641	134,585	2,557	0.38
2025-01-14-MS241218L14_exp241204_MS908_SCGEuri_7.5hr-arrest_18min-EU-chase_input	2x150	STAR-2.5.3a	S_pombe	2,396,441	0.63	2,178,672	170,694	71,481	4,931	0.51
2025-01-14-MS241218L14_exp241204_MS908_SCGEuri_7.5hr-arrest_18min-EU-chase_input	2x150	STAR-2.5.3a	sacCer3	2,396,441	0.68	1,596,545	31,859	158,980	2,958	0.37
2025-01-14-MS241218L15_exp241204_MS908_SCGEuri_7.5hr-arrest_28min-EU-chase_input	2x150	STAR-2.5.3a	S_pombe	2,147,623	0.64	2,013,493	153,931	60,366	4,476	0.52
2025-01-14-MS241218L15_exp241204_MS908_SCGEuri_7.5hr-arrest_28min-EU-chase_input	2x150	STAR-2.5.3a	sacCer3	2,147,623	0.69	1,442,961	26,113	130,373	2,689	0.37
2025-01-14-MS241218L16_exp241204_MS908_SCGEuri_7.5hr-arrest_44min-EU-chase_input	2x150	STAR-2.5.3a	S_pombe	2,024,219	0.64	1,822,538	141,626	56,289	3,989	0.50
2025-01-14-MS241218L16_exp241204_MS908_SCGEuri_7.5hr-arrest_44min-EU-chase_input	2x150	STAR-2.5.3a	sacCer3	2,024,219	0.69	1,406,136	23,600	128,078	3,112	0.39
2025-01-14-MS241218L17_exp241204_MS908_SCGEuri_1.5hr-arrest_no-EU_EU-enrich	2x150	STAR-2.5.3a	S_pombe	16,207,731	0.49	26,281,386	1,346,448	527,728	80,380	0.87
2025-01-14-MS241218L17_exp241204_MS908_SCGEuri_1.5hr-arrest_no-EU_EU-enrich	2x150	STAR-2.5.3a	sacCer3	16,207,731	0.70	392,010	4,602	77,124	610	0.01
2025-01-14-MS241218L18_exp241204_MS908_SCGEuri_1.5hr-arrest_04min-EU-chase_EU-enrich	2x150	STAR-2.5.3a	S_pombe	17,384,823	0.52	24,246,268	1,223,688	495,169	76,619	0.75
2025-01-14-MS241218L18_exp241204_MS908_SCGEuri_1.5hr-arrest_04min-EU-chase_EU-enrich	2x150	STAR-2.5.3a	sacCer3	17,384,823	0.66	3,776,944	43,738	243,741	5,593	0.12

MAPPING STATS

2025-01-14-MS241218L19_exp241204_MS908_SCGEur_i_1.5hr-arrest_07min-EU-chase_EU-enrich	2x150	STAR-2.5.3a	S_pombe	15,183,374	0.52	22,181,396	1,095,292	462,090	67,976	0.78
2025-01-14-MS241218L19_exp241204_MS908_SCGEur_i_1.5hr-arrest_07min-EU-chase_EU-enrich	2x150	STAR-2.5.3a	sacCer3	15,183,374	0.67	2,772,330	34,472	197,588	4,138	0.10
2025-01-14-MS241218L20_exp241204_MS908_SCGEur_i_1.5hr-arrest_10min-EU-chase_EU-enrich	2x150	STAR-2.5.3a	S_pombe	15,704,126	0.51	23,826,571	1,130,015	510,429	86,707	0.81
2025-01-14-MS241218L20_exp241204_MS908_SCGEur_i_1.5hr-arrest_10min-EU-chase_EU-enrich	2x150	STAR-2.5.3a	sacCer3	15,704,126	0.68	2,259,874	25,966	181,408	2,860	0.08
2025-01-14-MS241218L21_exp241204_MS908_SCGEur_i_1.5hr-arrest_13min-EU-chase_EU-enrich	2x150	STAR-2.5.3a	S_pombe	14,237,859	0.52	22,013,863	1,057,187	459,094	73,812	0.83
2025-01-14-MS241218L21_exp241204_MS908_SCGEur_i_1.5hr-arrest_13min-EU-chase_EU-enrich	2x150	STAR-2.5.3a	sacCer3	14,237,859	0.69	1,744,325	19,773	143,622	3,108	0.07
2025-01-14-MS241218L22_exp241204_MS908_SCGEur_i_1.5hr-arrest_18min-EU-chase_EU-enrich	2x150	STAR-2.5.3a	S_pombe	12,757,501	0.39	15,385,389	800,795	451,600	40,062	0.65
2025-01-14-MS241218L22_exp241204_MS908_SCGEur_i_1.5hr-arrest_18min-EU-chase_EU-enrich	2x150	STAR-2.5.3a	sacCer3	12,757,501	0.51	968,136	11,770	155,730	1,234	0.04
2025-01-14-MS241218L23_exp241204_MS908_SCGEur_i_1.5hr-arrest_28min-EU-chase_EU-enrich	2x150	STAR-2.5.3a	S_pombe	16,903,459	0.50	26,424,012	1,310,994	563,289	88,231	0.84
2025-01-14-MS241218L23_exp241204_MS908_SCGEur_i_1.5hr-arrest_28min-EU-chase_EU-enrich	2x150	STAR-2.5.3a	sacCer3	16,903,459	0.70	1,134,322	12,482	130,050	1,064	0.04
2025-01-14-MS241218L24_exp241204_MS908_SCGEur_i_1.5hr-arrest_44min-EU-chase_EU-enrich	2x150	STAR-2.5.3a	S_pombe	17,628,649	0.49	28,115,530	1,393,440	582,739	95,209	0.86
2025-01-14-MS241218L24_exp241204_MS908_SCGEur_i_1.5hr-arrest_44min-EU-chase_EU-enrich	2x150	STAR-2.5.3a	sacCer3	17,628,649	0.69	916,328	9,880	111,940	1,242	0.03
2025-01-14-MS241218L25_exp241204_MS908_SCGEur_i_7.5hr-arrest_no-EU_EU-enrich	2x150	STAR-2.5.3a	S_pombe	17,568,452	0.48	28,929,737	1,468,667	572,378	98,394	0.88
2025-01-14-MS241218L25_exp241204_MS908_SCGEur_i_7.5hr-arrest_no-EU_EU-enrich	2x150	STAR-2.5.3a	sacCer3	17,568,452	0.69	312,593	4,903	88,323	495	0.01
2025-01-14-MS241218L26_exp241204_MS908_SCGEur_i_7.5hr-arrest_04min-EU-chase_EU-enrich	2x150	STAR-2.5.3a	S_pombe	17,181,732	0.49	24,744,839	1,269,581	508,604	77,432	0.77
2025-01-14-MS241218L26_exp241204_MS908_SCGEur_i_7.5hr-arrest_04min-EU-chase_EU-enrich	2x150	STAR-2.5.3a	sacCer3	17,181,732	0.61	3,194,719	43,577	272,829	7,815	0.10
2025-01-14-MS241218L27_exp241204_MS908_SCGEur_i_7.5hr-arrest_07min-EU-chase_EU-enrich	2x150	STAR-2.5.3a	S_pombe	16,322,693	0.50	24,479,555	1,277,205	484,258	70,100	0.81
2025-01-14-MS241218L27_exp241204_MS908_SCGEur_i_7.5hr-arrest_07min-EU-chase_EU-enrich	2x150	STAR-2.5.3a	sacCer3	16,322,693	0.64	2,581,731	37,637	220,951	5,191	0.09
2025-01-14-MS241218L28_exp241204_MS908_SCGEur_i_7.5hr-arrest_10min-EU-chase_EU-enrich	2x150	STAR-2.5.3a	S_pombe	13,723,073	0.53	21,278,208	1,072,352	425,143	64,155	0.83
2025-01-14-MS241218L28_exp241204_MS908_SCGEur_i_7.5hr-arrest_10min-EU-chase_EU-enrich	2x150	STAR-2.5.3a	sacCer3	13,723,073	0.67	1,841,080	25,346	180,830	4,304	0.07
2025-01-14-MS241218L29_exp241204_MS908_SCGEur_i_7.5hr-arrest_13min-EU-chase_EU-enrich	2x150	STAR-2.5.3a	S_pombe	15,904,780	0.50	24,575,118	1,245,090	496,750	75,242	0.83
2025-01-14-MS241218L29_exp241204_MS908_SCGEur_i_7.5hr-arrest_13min-EU-chase_EU-enrich	2x150	STAR-2.5.3a	sacCer3	15,904,780	0.65	1,736,802	26,000	188,348	4,526	0.06
2025-01-14-MS241218L30_exp241204_MS908_SCGEur_i_7.5hr-arrest_18min-EU-chase_EU-enrich	2x150	STAR-2.5.3a	S_pombe	14,139,679	0.52	22,646,125	1,150,441	447,821	72,001	0.86
2025-01-14-MS241218L30_exp241204_MS908_SCGEur_i_7.5hr-arrest_18min-EU-chase_EU-enrich	2x150	STAR-2.5.3a	sacCer3	14,139,679	0.69	1,104,363	15,625	135,138	2,718	0.04
2025-01-14-MS241218L31_exp241204_MS908_SCGEur_i_7.5hr-arrest_28min-EU-chase_EU-enrich	2x150	STAR-2.5.3a	S_pombe	16,636,463	0.47	26,615,195	1,381,561	539,983	77,843	0.86
2025-01-14-MS241218L31_exp241204_MS908_SCGEur_i_7.5hr-arrest_28min-EU-chase_EU-enrich	2x150	STAR-2.5.3a	sacCer3	16,636,463	0.65	872,890	12,060	132,208	2,244	0.03
2025-01-14-MS241218L32_exp241204_MS908_SCGEur_i_7.5hr-arrest_44min-EU-chase_EU-enrich	2x150	STAR-2.5.3a	S_pombe	16,544,209	0.45	28,049,712	1,408,310	529,318	85,568	0.91
2025-01-14-MS241218L32_exp241204_MS908_SCGEur_i_7.5hr-arrest_44min-EU-chase_EU-enrich	2x150	STAR-2.5.3a	sacCer3	16,544,209	0.63	858,491	12,215	122,220	1,592	0.03
2025-01-14-MS241219L01_exp241025_MS69_SCD_1hr-arrest_Torin_polyA-RNA	2x150	STAR-2.5.3a	Candida	3,953,295	0.62	4,106,854	64,418	51,418	5,040	0.53
2025-01-14-MS241219L01_exp241025_MS69_SCD_1hr-arrest_Torin_polyA-RNA	2x150	STAR-2.5.3a	sacCer3	3,953,295	0.67	2,655,733	16,663	169,100	3,170	0.36
2025-01-14-MS241219L02_exp241025_MS69_SCD_1hr-arrest_DMSO_polyA-RNA	2x150	STAR-2.5.3a	Candida	5,250,519	0.61	3,875,828	59,238	49,681	4,267	0.38
2025-01-14-MS241219L02_exp241025_MS69_SCD_1hr-arrest_DMSO_polyA-RNA	2x150	STAR-2.5.3a	sacCer3	5,250,519	0.57	4,815,249	141,313	323,752	7,644	0.50
2025-01-14-MS241219L03_exp241025_MS69_SCD_4.75hr-arrest_Torin_polyA-RNA	2x150	STAR-2.5.3a	Candida	4,605,353	0.63	4,740,149	76,311	64,612	6,206	0.53
2025-01-14-MS241219L03_exp241025_MS69_SCD_4.75hr-arrest_Torin_polyA-RNA	2x150	STAR-2.5.3a	sacCer3	4,605,353	0.66	2,738,969	17,835	336,180	6,610	0.34
2025-01-14-MS241219L04_exp241025_MS69_SCD_4.75hr-arrest_DMSO_polyA-RNA	2x150	STAR-2.5.3a	Candida	5,885,207	0.62	4,662,309	74,237	59,379	6,601	0.41
2025-01-14-MS241219L04_exp241025_MS69_SCD_4.75hr-arrest_DMSO_polyA-RNA	2x150	STAR-2.5.3a	sacCer3	5,885,207	0.58	4,752,460	105,106	602,420	18,492	0.47

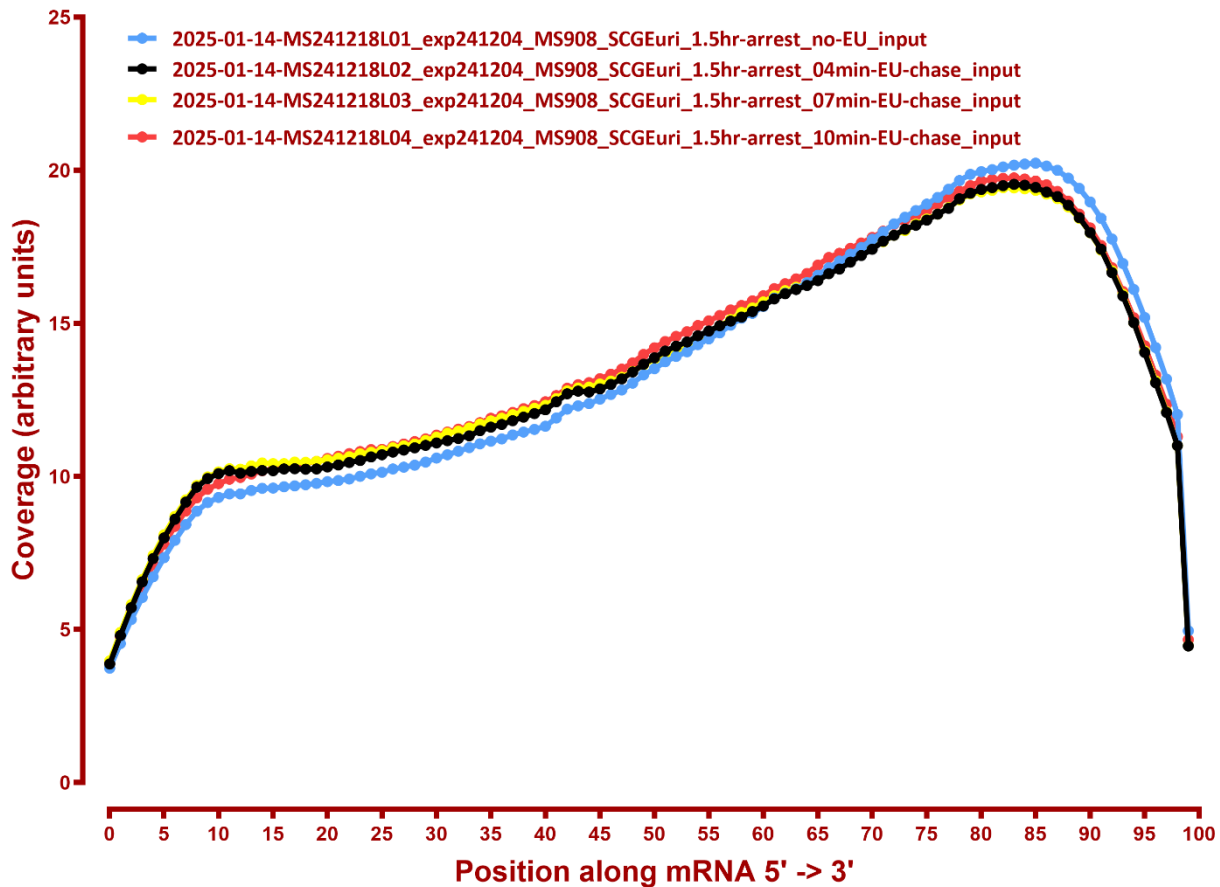
MAPPING STATS

2025-01-14-MS241219L05_exp241002_MS69_SCD_1hr-arrest_Rapa_polyA-RNA	2x150	STAR-2.5.3a	Candida	4,673,799	0.62	4,512,535	70,399	58,608	5,138	0.50
2025-01-14-MS241219L05_exp241002_MS69_SCD_1hr-arrest_Rapa_polyA-RNA	2x150	STAR-2.5.3a	sacCer3	4,673,799	0.66	3,228,691	21,637	244,718	6,340	0.37
2025-01-14-MS241219L06_exp241002_MS69_SCD_1hr-arrest_DMSO_polyA-RNA	2x150	STAR-2.5.3a	Candida	5,672,025	0.63	4,100,670	65,292	55,804	5,512	0.37
2025-01-14-MS241219L06_exp241002_MS69_SCD_1hr-arrest_DMSO_polyA-RNA	2x150	STAR-2.5.3a	sacCer3	5,672,025	0.59	5,103,541	151,211	353,554	8,728	0.50
2025-01-14-MS241219L07_exp241002_MS69_SCD_4.75hr-arrest_Rapa_polyA-RNA	2x150	STAR-2.5.3a	Candida	5,409,624	0.61	5,679,313	90,649	80,127	8,095	0.54
2025-01-14-MS241219L07_exp241002_MS69_SCD_4.75hr-arrest_Rapa_polyA-RNA	2x150	STAR-2.5.3a	sacCer3	5,409,624	0.63	3,181,119	28,819	415,572	10,568	0.34
2025-01-14-MS241219L08_exp241002_MS69_SCD_4.75hr-arrest_DMSO_polyA-RNA	2x150	STAR-2.5.3a	Candida	5,393,786	0.64	3,943,576	64,620	51,655	4,775	0.38
2025-01-14-MS241219L08_exp241002_MS69_SCD_4.75hr-arrest_DMSO_polyA-RNA	2x150	STAR-2.5.3a	sacCer3	5,393,786	0.60	4,534,465	104,921	568,156	15,662	0.48
2025-01-14-MS241219L09_exp241010_MS756_SCD_1hr-arrest_PhIAA_polyA-RNA	2x150	STAR-2.5.3a	Candida	5,355,451	0.64	3,929,641	65,599	57,710	5,672	0.38
2025-01-14-MS241219L09_exp241010_MS756_SCD_1hr-arrest_PhIAA_polyA-RNA	2x150	STAR-2.5.3a	sacCer3	5,355,451	0.58	4,611,676	165,570	348,132	6,520	0.48
2025-01-14-MS241219L10_exp241010_MS756_SCD_1hr-arrest_DMSO_polyA-RNA	2x150	STAR-2.5.3a	Candida	5,831,892	0.61	4,563,579	77,187	64,630	6,350	0.40
2025-01-14-MS241219L10_exp241010_MS756_SCD_1hr-arrest_DMSO_polyA-RNA	2x150	STAR-2.5.3a	sacCer3	5,831,892	0.59	4,776,372	144,280	324,583	8,233	0.45
2025-01-14-MS241219L11_exp241010_MS756_SCD_4.75hr-arrest_PhIAA_polyA-RNA	2x150	STAR-2.5.3a	Candida	6,136,768	0.59	5,684,640	93,994	79,749	8,741	0.48
2025-01-14-MS241219L11_exp241010_MS756_SCD_4.75hr-arrest_PhIAA_polyA-RNA	2x150	STAR-2.5.3a	sacCer3	6,136,768	0.56	4,310,438	146,534	498,787	12,369	0.40
2025-01-14-MS241219L12_exp241010_MS756_SCD_4.75hr-arrest_DMSO_polyA-RNA	2x150	STAR-2.5.3a	Candida	5,484,146	0.61	4,851,687	80,173	67,427	6,121	0.46
2025-01-14-MS241219L12_exp241010_MS756_SCD_4.75hr-arrest_DMSO_polyA-RNA	2x150	STAR-2.5.3a	sacCer3	5,484,146	0.59	3,878,479	107,421	450,910	11,712	0.41
2025-01-14-MS241219L13_exp241010_MS791_SCD_1hr-arrest_PhIAA_polyA-RNA	2x150	STAR-2.5.3a	Candida	6,016,520	0.62	4,317,675	71,623	65,701	5,861	0.37
2025-01-14-MS241219L13_exp241010_MS791_SCD_1hr-arrest_PhIAA_polyA-RNA	2x150	STAR-2.5.3a	sacCer3	6,016,520	0.59	5,170,963	149,773	397,150	10,984	0.48
2025-01-14-MS241219L14_exp241010_MS791_SCD_1hr-arrest_DMSO_polyA-RNA	2x150	STAR-2.5.3a	Candida	5,545,403	0.63	4,449,946	71,924	66,776	6,596	0.41
2025-01-14-MS241219L14_exp241010_MS791_SCD_1hr-arrest_DMSO_polyA-RNA	2x150	STAR-2.5.3a	sacCer3	5,545,403	0.61	4,382,333	123,475	334,499	9,337	0.44
2025-01-14-MS241219L15_exp241010_MS791_SCD_4.75hr-arrest_PhIAA_polyA-RNA	2x150	STAR-2.5.3a	Candida	6,009,744	0.60	5,719,327	92,207	80,021	7,679	0.49
2025-01-14-MS241219L15_exp241010_MS791_SCD_4.75hr-arrest_PhIAA_polyA-RNA	2x150	STAR-2.5.3a	sacCer3	6,009,744	0.61	4,018,599	94,069	486,501	13,305	0.38
2025-01-14-MS241219L16_exp241010_MS791_SCD_4.75hr-arrest_DMSO_polyA-RNA	2x150	STAR-2.5.3a	Candida	6,046,401	0.60	5,903,745	96,429	87,685	9,763	0.50
2025-01-14-MS241219L16_exp241010_MS791_SCD_4.75hr-arrest_DMSO_polyA-RNA	2x150	STAR-2.5.3a	sacCer3	6,046,401	0.62	3,688,241	74,921	474,758	13,496	0.35
2025-01-14-MS241219L17_exp241108_MS867_SCD_1hr-DMSO_polyA-RNA	2x150	STAR-2.5.3a	Candida	5,040,697	0.64	3,316,759	54,237	50,511	4,395	0.34
2025-01-14-MS241219L17_exp241108_MS867_SCD_1hr-DMSO_polyA-RNA	2x150	STAR-2.5.3a	sacCer3	5,040,697	0.60	4,608,839	126,869	271,094	8,080	0.50
2025-01-14-MS241219L18_exp241108_MS867_SCD_1hr-Rapa_polyA-RNA	2x150	STAR-2.5.3a	Candida	5,944,558	0.62	4,081,812	66,420	55,568	4,544	0.35
2025-01-14-MS241219L18_exp241108_MS867_SCD_1hr-Rapa_polyA-RNA	2x150	STAR-2.5.3a	sacCer3	5,944,558	0.58	5,658,388	155,870	325,227	10,015	0.52
2025-01-14-MS241219L19_exp241108_MS867_SCD_6hr-Rapa_polyA-RNA	2x150	STAR-2.5.3a	Candida	5,906,352	0.64	3,954,120	65,656	55,274	5,042	0.35
2025-01-14-MS241219L19_exp241108_MS867_SCD_6hr-Rapa_polyA-RNA	2x150	STAR-2.5.3a	sacCer3	5,906,352	0.60	5,306,032	148,550	317,181	11,479	0.49
2025-01-14-MS241219L20_exp241108_MS868_SCD_1hr-DMSO_polyA-RNA	2x150	STAR-2.5.3a	Candida	5,370,223	0.65	3,577,100	58,598	52,590	4,890	0.34
2025-01-14-MS241219L20_exp241108_MS868_SCD_1hr-DMSO_polyA-RNA	2x150	STAR-2.5.3a	sacCer3	5,370,223	0.61	4,841,343	136,733	292,382	11,318	0.49
2025-01-14-MS241219L21_exp241108_MS868_SCD_1hr-Rapa_polyA-RNA	2x150	STAR-2.5.3a	Candida	5,457,756	0.61	5,390,220	86,790	81,742	7,974	0.51
2025-01-14-MS241219L21_exp241108_MS868_SCD_1hr-Rapa_polyA-RNA	2x150	STAR-2.5.3a	sacCer3	5,457,756	0.62	3,572,856	117,444	240,136	7,492	0.36
2025-01-14-MS241219L22_exp241108_MS868_SCD_6hr-Rapa_polyA-RNA	2x150	STAR-2.5.3a	Candida	5,898,674	0.58	6,683,690	104,624	88,432	9,296	0.58
2025-01-14-MS241219L22_exp241108_MS868_SCD_6hr-Rapa_polyA-RNA	2x150	STAR-2.5.3a	sacCer3	5,898,674	0.62	3,324,392	90,104	199,398	5,084	0.31

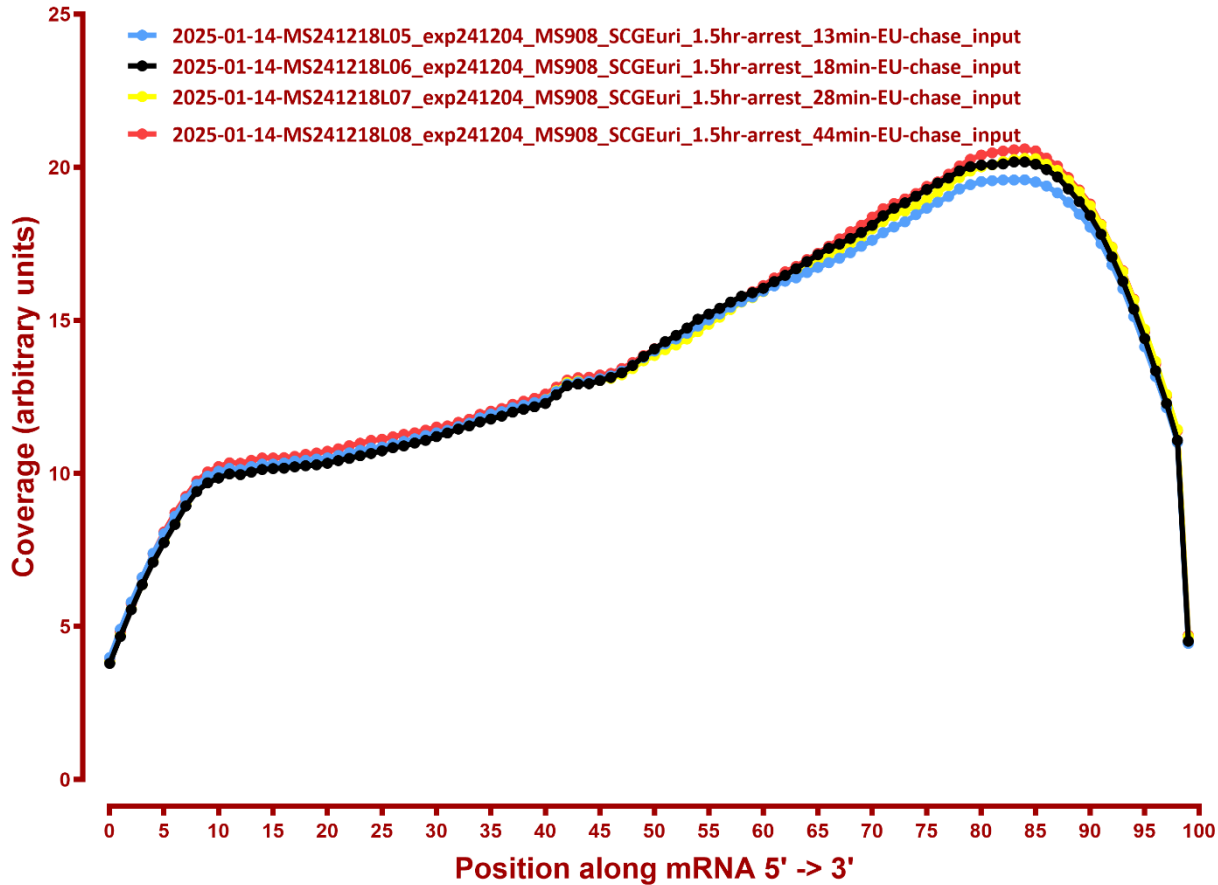
#	Exonic:	Intergenic:	Intronic:
2025-01-14-MS241218L01_exp241204_MS908_SCGEur1_1.5hr-arrest_no-EU_input	0.90	0.10	0.00
2025-01-14-MS241218L02_exp241204_MS908_SCGEur1_1.5hr-arrest_04min-EU-chase_input	0.91	0.09	0.00
2025-01-14-MS241218L03_exp241204_MS908_SCGEur1_1.5hr-arrest_07min-EU-chase_input	0.90	0.09	0.00
2025-01-14-MS241218L04_exp241204_MS908_SCGEur1_1.5hr-arrest_10min-EU-chase_input	0.90	0.09	0.00
2025-01-14-MS241218L05_exp241204_MS908_SCGEur1_1.5hr-arrest_13min-EU-chase_input	0.90	0.09	0.00
2025-01-14-MS241218L06_exp241204_MS908_SCGEur1_1.5hr-arrest_18min-EU-chase_input	0.90	0.09	0.00
2025-01-14-MS241218L07_exp241204_MS908_SCGEur1_1.5hr-arrest_28min-EU-chase_input	0.90	0.09	0.00
2025-01-14-MS241218L08_exp241204_MS908_SCGEur1_1.5hr-arrest_44min-EU-chase_input	0.90	0.09	0.00
2025-01-14-MS241218L09_exp241204_MS908_SCGEur1_7.5hr-arrest_no-EU_input	0.90	0.09	0.00
2025-01-14-MS241218L10_exp241204_MS908_SCGEur1_7.5hr-arrest_04min-EU-chase_input	0.91	0.09	0.00
2025-01-14-MS241218L11_exp241204_MS908_SCGEur1_7.5hr-arrest_07min-EU-chase_input	0.91	0.09	0.00
2025-01-14-MS241218L12_exp241204_MS908_SCGEur1_7.5hr-arrest_10min-EU-chase_input	0.90	0.09	0.00
2025-01-14-MS241218L13_exp241204_MS908_SCGEur1_7.5hr-arrest_13min-EU-chase_input	0.90	0.09	0.00
2025-01-14-MS241218L14_exp241204_MS908_SCGEur1_7.5hr-arrest_18min-EU-chase_input	0.90	0.10	0.00
2025-01-14-MS241218L15_exp241204_MS908_SCGEur1_7.5hr-arrest_28min-EU-chase_input	0.90	0.10	0.00
2025-01-14-MS241218L16_exp241204_MS908_SCGEur1_7.5hr-arrest_44min-EU-chase_input	0.90	0.10	0.00
2025-01-14-MS241218L17_exp241204_MS908_SCGEur1_1.5hr-arrest_no-EU_EU-enrich	0.91	0.09	0.00
2025-01-14-MS241218L18_exp241204_MS908_SCGEur1_1.5hr-arrest_04min-EU-chase_EU-enrich	0.91	0.08	0.00
2025-01-14-MS241218L19_exp241204_MS908_SCGEur1_1.5hr-arrest_07min-EU-chase_EU-enrich	0.91	0.08	0.00
2025-01-14-MS241218L20_exp241204_MS908_SCGEur1_1.5hr-arrest_10min-EU-chase_EU-enrich	0.91	0.08	0.00
2025-01-14-MS241218L21_exp241204_MS908_SCGEur1_1.5hr-arrest_13min-EU-chase_EU-enrich	0.91	0.09	0.00
2025-01-14-MS241218L22_exp241204_MS908_SCGEur1_1.5hr-arrest_18min-EU-chase_EU-enrich	0.92	0.07	0.00
2025-01-14-MS241218L23_exp241204_MS908_SCGEur1_1.5hr-arrest_28min-EU-chase_EU-enrich	0.91	0.09	0.00
2025-01-14-MS241218L24_exp241204_MS908_SCGEur1_1.5hr-arrest_44min-EU-chase_EU-enrich	0.91	0.09	0.00
2025-01-14-MS241218L25_exp241204_MS908_SCGEur1_7.5hr-arrest_no-EU_EU-enrich	0.91	0.09	0.00
2025-01-14-MS241218L26_exp241204_MS908_SCGEur1_7.5hr-arrest_04min-EU-chase_EU-enrich	0.91	0.08	0.01
2025-01-14-MS241218L27_exp241204_MS908_SCGEur1_7.5hr-arrest_07min-EU-chase_EU-enrich	0.91	0.09	0.01
2025-01-14-MS241218L28_exp241204_MS908_SCGEur1_7.5hr-arrest_10min-EU-chase_EU-enrich	0.91	0.08	0.01
2025-01-14-MS241218L29_exp241204_MS908_SCGEur1_7.5hr-arrest_13min-EU-chase_EU-enrich	0.91	0.09	0.01
2025-01-14-MS241218L30_exp241204_MS908_SCGEur1_7.5hr-arrest_18min-EU-chase_EU-enrich	0.90	0.09	0.01
2025-01-14-MS241218L31_exp241204_MS908_SCGEur1_7.5hr-arrest_28min-EU-chase_EU-enrich	0.90	0.09	0.01
2025-01-14-MS241218L32_exp241204_MS908_SCGEur1_7.5hr-arrest_44min-EU-chase_EU-enrich	0.90	0.09	0.01
2025-01-14-MS241219L01_exp241025_MS69_SCD_1hr-arrest_Torin_polyA-RNA	0.93	0.07	0.00
2025-01-14-MS241219L02_exp241025_MS69_SCD_1hr-arrest_DMSO_polyA-RNA	0.94	0.06	0.00
2025-01-14-MS241219L03_exp241025_MS69_SCD_4.75hr-arrest_Torin_polyA-RNA	0.93	0.07	0.00
2025-01-14-MS241219L04_exp241025_MS69_SCD_4.75hr-arrest_DMSO_polyA-RNA	0.93	0.07	0.00
2025-01-14-MS241219L05_exp241002_MS69_SCD_1hr-arrest_Rapa_polyA-RNA	0.93	0.07	0.00
2025-01-14-MS241219L06_exp241002_MS69_SCD_1hr-arrest_DMSO_polyA-RNA	0.93	0.07	0.00
2025-01-14-MS241219L07_exp241002_MS69_SCD_4.75hr-arrest_Rapa_polyA-RNA	0.93	0.07	0.00
2025-01-14-MS241219L08_exp241002_MS69_SCD_4.75hr-arrest_DMSO_polyA-RNA	0.93	0.07	0.00
2025-01-14-MS241219L09_exp241010_MS756_SCD_1hr-arrest_PhIAA_polyA-RNA	0.94	0.06	0.00
2025-01-14-MS241219L10_exp241010_MS756_SCD_1hr-arrest_DMSO_polyA-RNA	0.93	0.07	0.00
2025-01-14-MS241219L11_exp241010_MS756_SCD_4.75hr-arrest_PhIAA_polyA-RNA	0.94	0.06	0.00
2025-01-14-MS241219L12_exp241010_MS756_SCD_4.75hr-arrest_DMSO_polyA-RNA	0.93	0.07	0.00
2025-01-14-MS241219L13_exp241010_MS791_SCD_1hr-arrest_PhIAA_polyA-RNA	0.93	0.07	0.00
2025-01-14-MS241219L14_exp241010_MS791_SCD_1hr-arrest_DMSO_polyA-RNA	0.93	0.07	0.00
2025-01-14-MS241219L15_exp241010_MS791_SCD_4.75hr-arrest_PhIAA_polyA-RNA	0.93	0.07	0.00
2025-01-14-MS241219L16_exp241010_MS791_SCD_4.75hr-arrest_DMSO_polyA-RNA	0.93	0.07	0.00
2025-01-14-MS241219L17_exp241108_MS867_SCD_1hr-DMSO_polyA-RNA	0.93	0.07	0.00
2025-01-14-MS241219L18_exp241108_MS867_SCD_1hr-Rapa_polyA-RNA	0.93	0.07	0.00
2025-01-14-MS241219L19_exp241108_MS867_SCD_6hr-Rapa_polyA-RNA	0.93	0.07	0.00
2025-01-14-MS241219L20_exp241108_MS868_SCD_1hr-DMSO_polyA-RNA	0.93	0.06	0.00
2025-01-14-MS241219L21_exp241108_MS868_SCD_1hr-Rapa_polyA-RNA	0.94	0.06	0.00
2025-01-14-MS241219L22_exp241108_MS868_SCD_6hr-Rapa_polyA-RNA	0.93	0.06	0.00

COVERAGE ALL READS

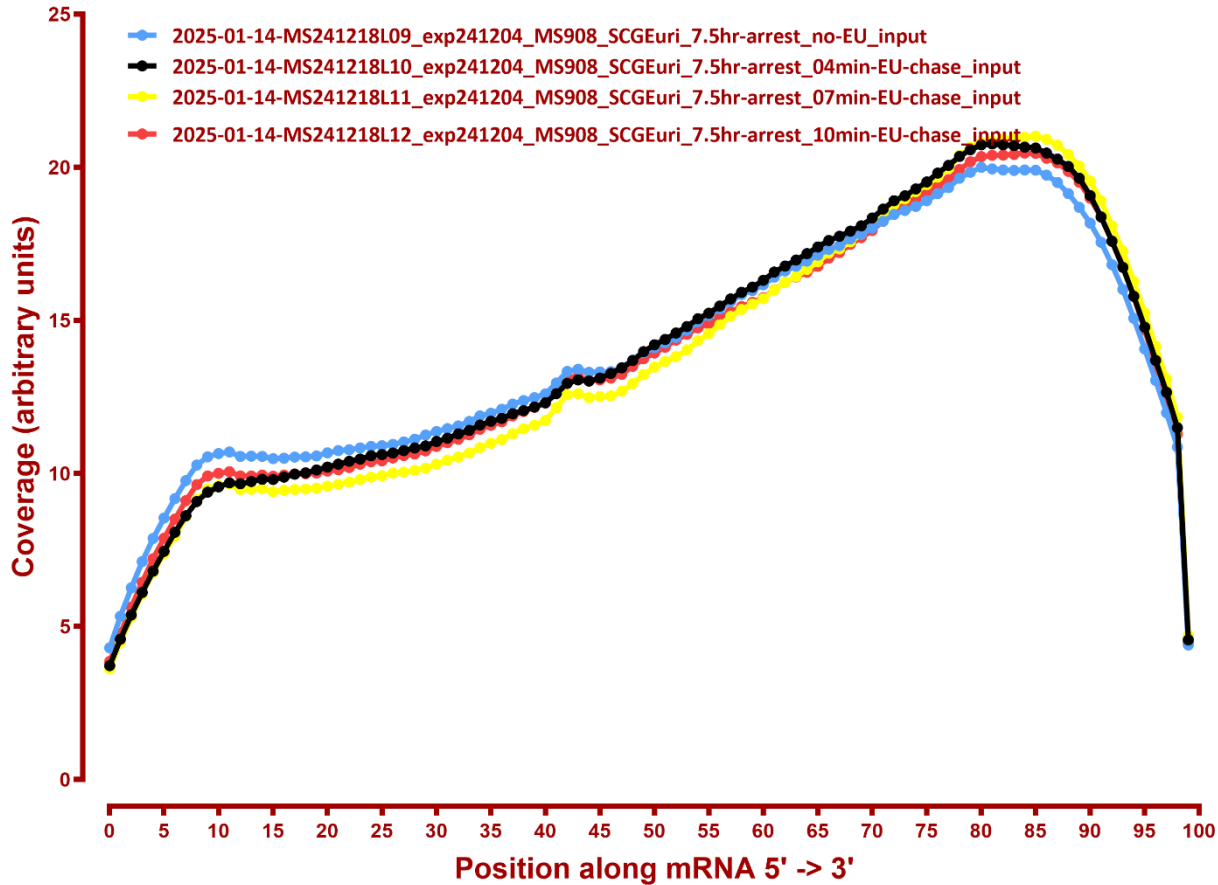
Coverage of genes; >1000bp, sacCer3



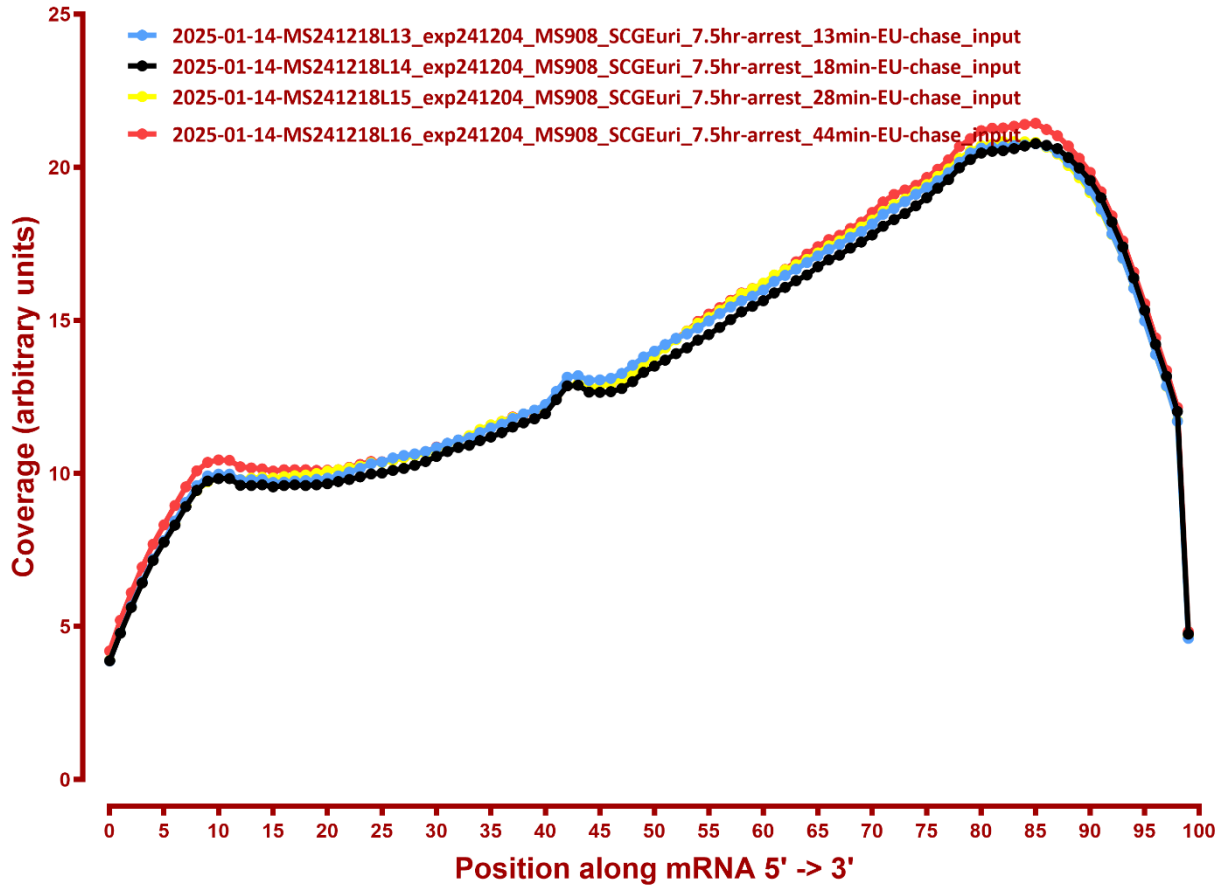
Coverage of genes; >1000bp, sacCer3



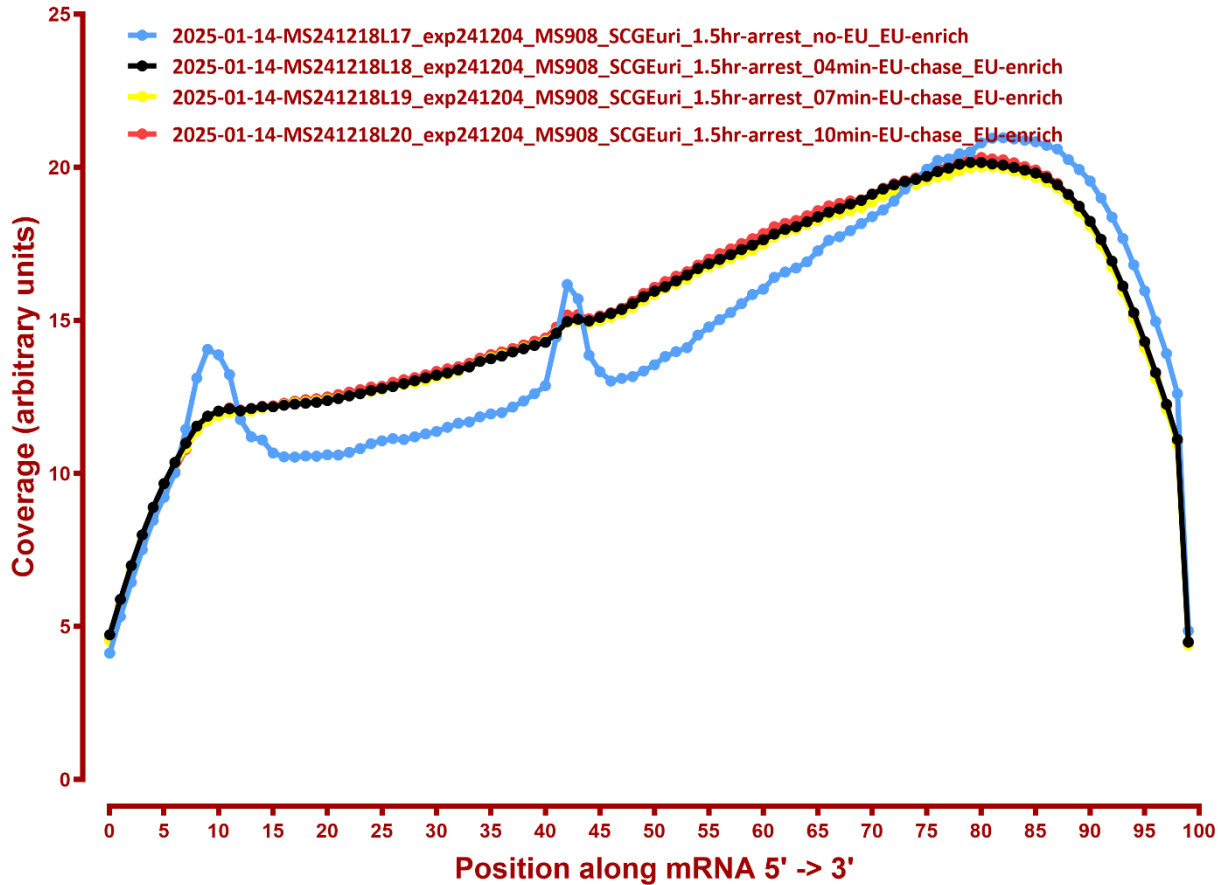
Coverage of genes; >1000bp, sacCer3



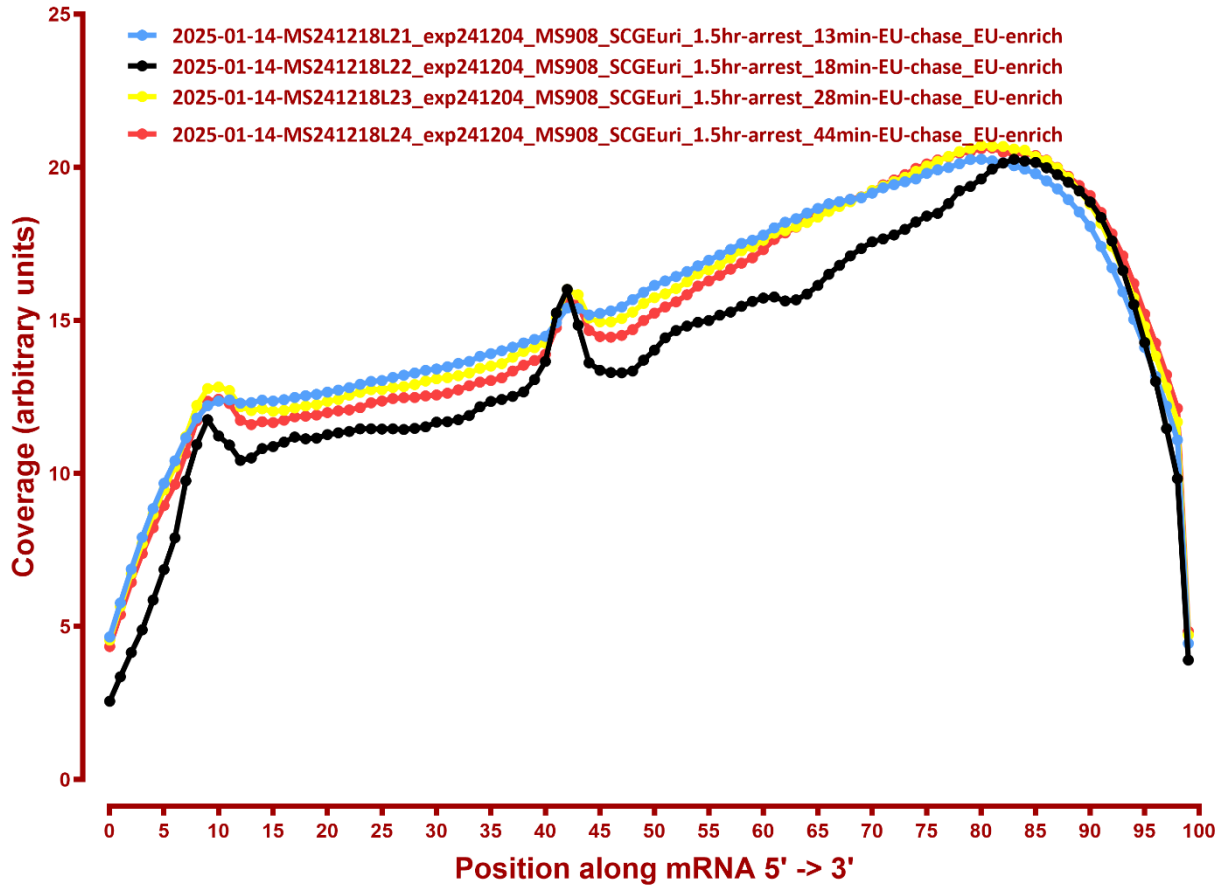
Coverage of genes; >1000bp, sacCer3



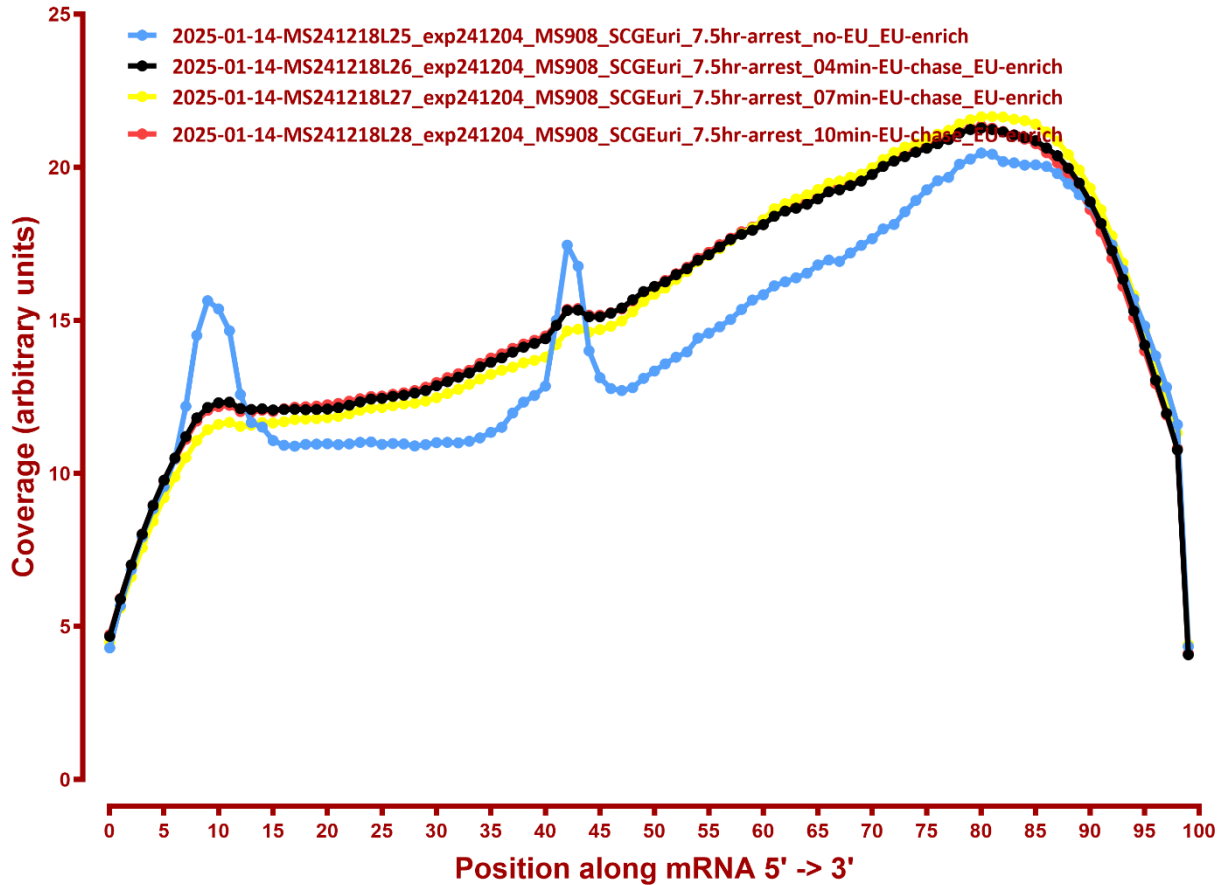
Coverage of genes; >1000bp, sacCer3



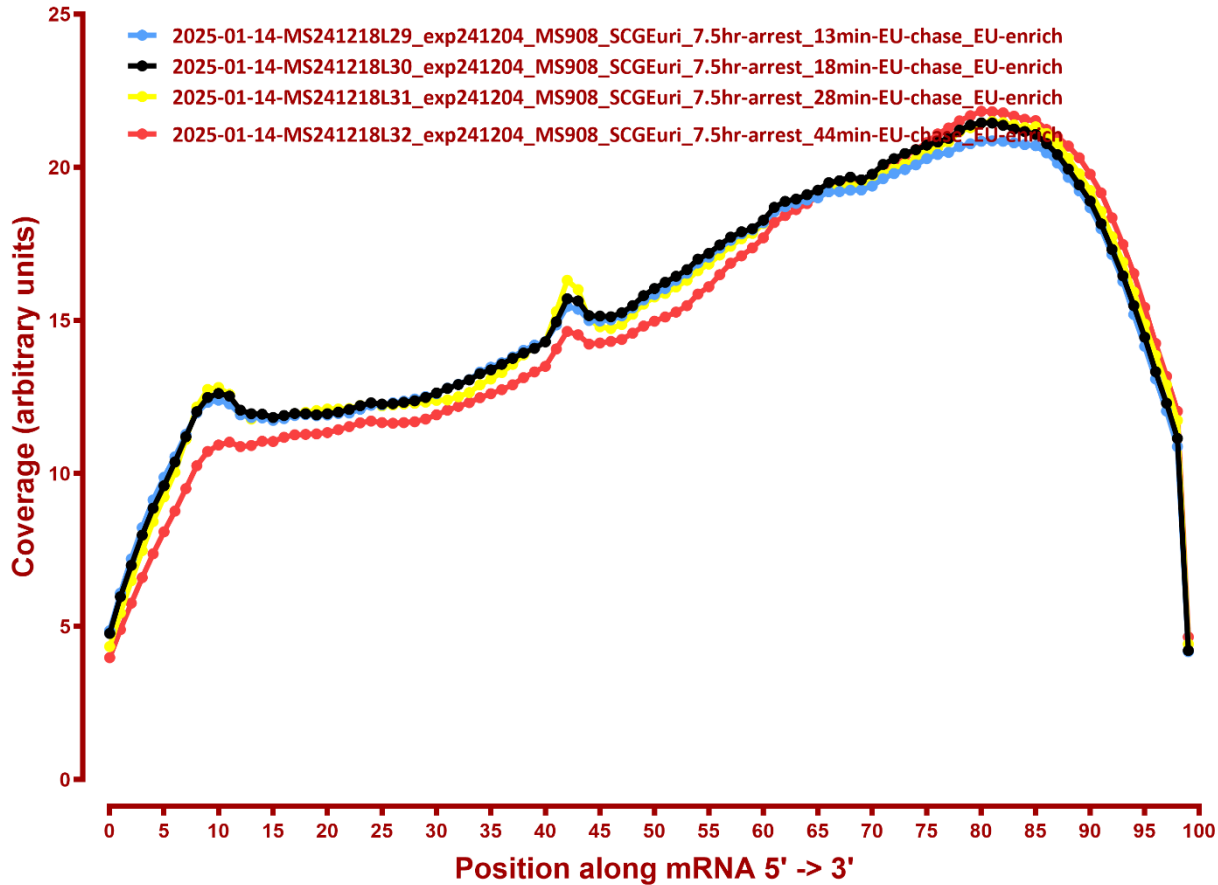
Coverage of genes; >1000bp, sacCer3



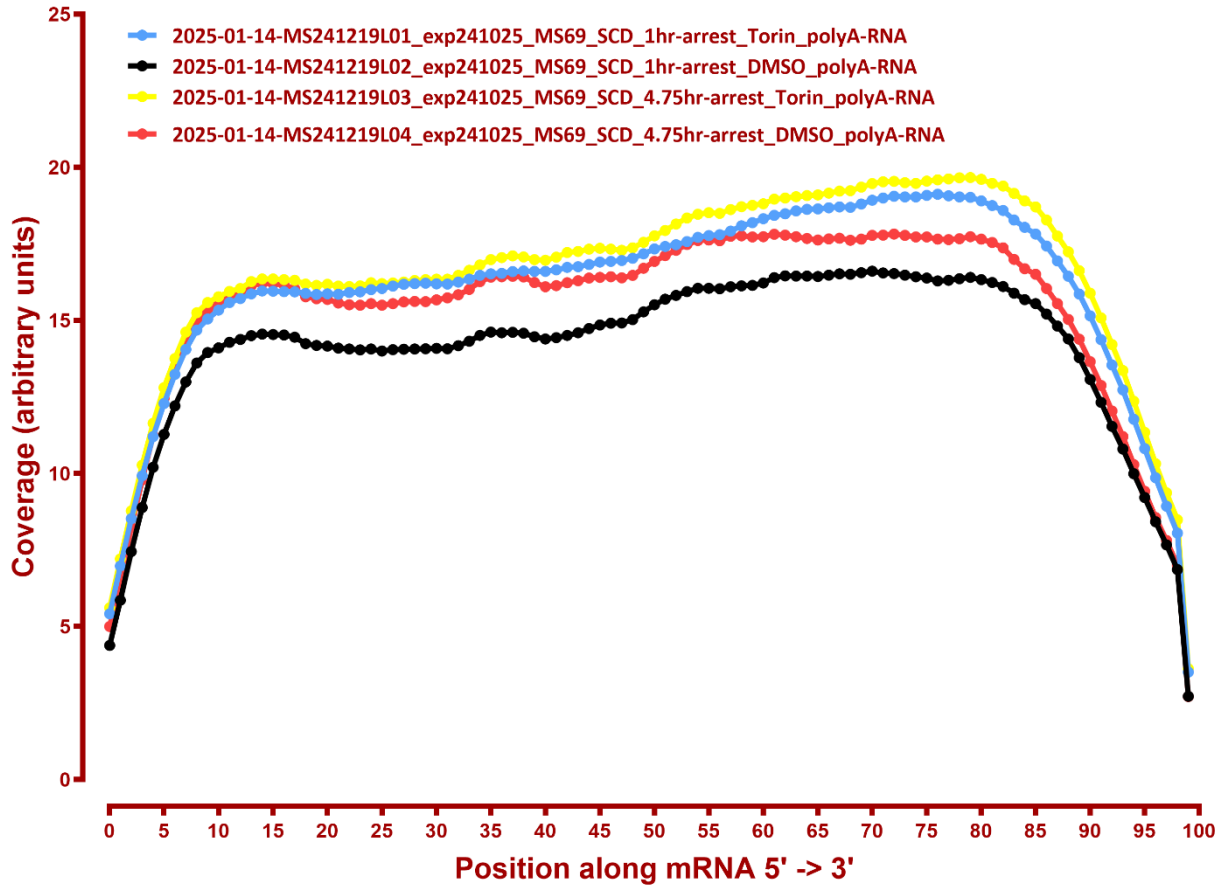
Coverage of genes; >1000bp, sacCer3



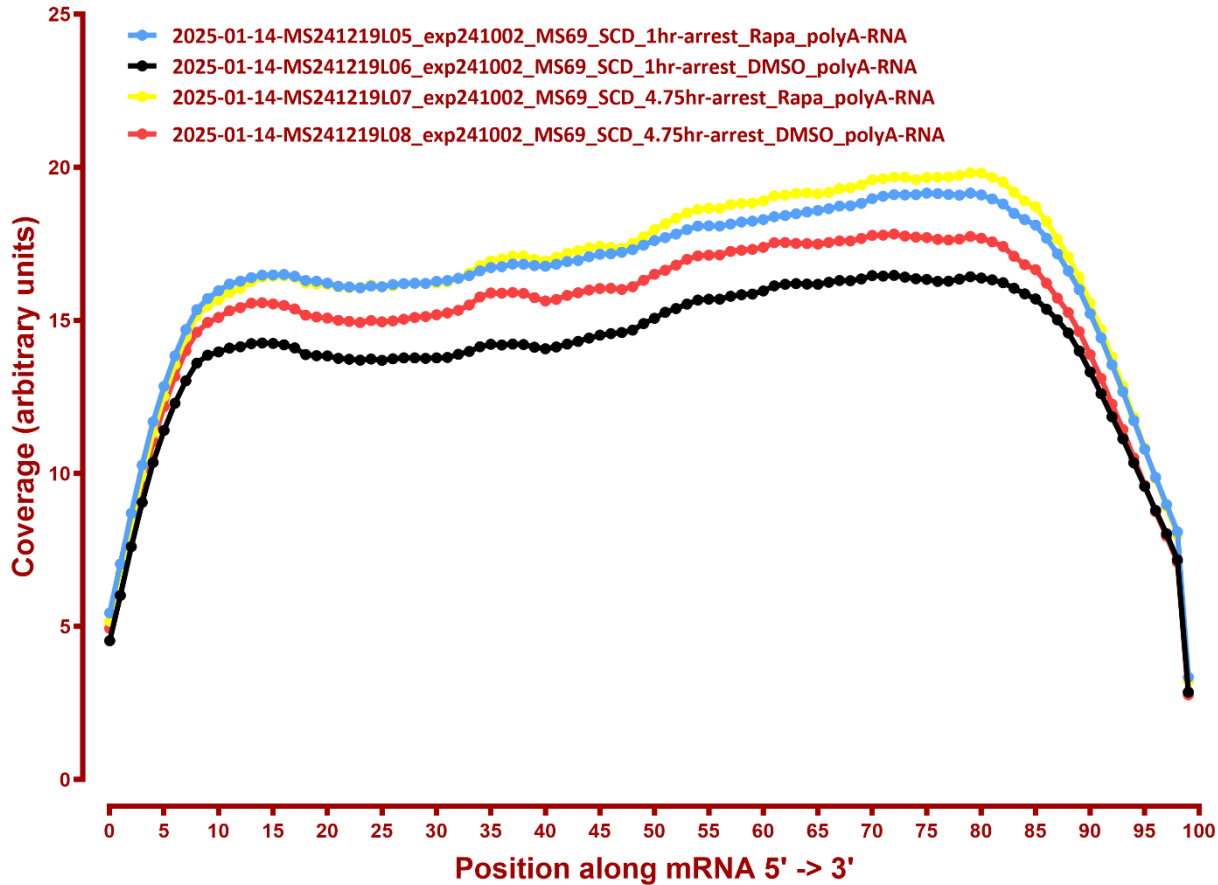
Coverage of genes; >1000bp, sacCer3



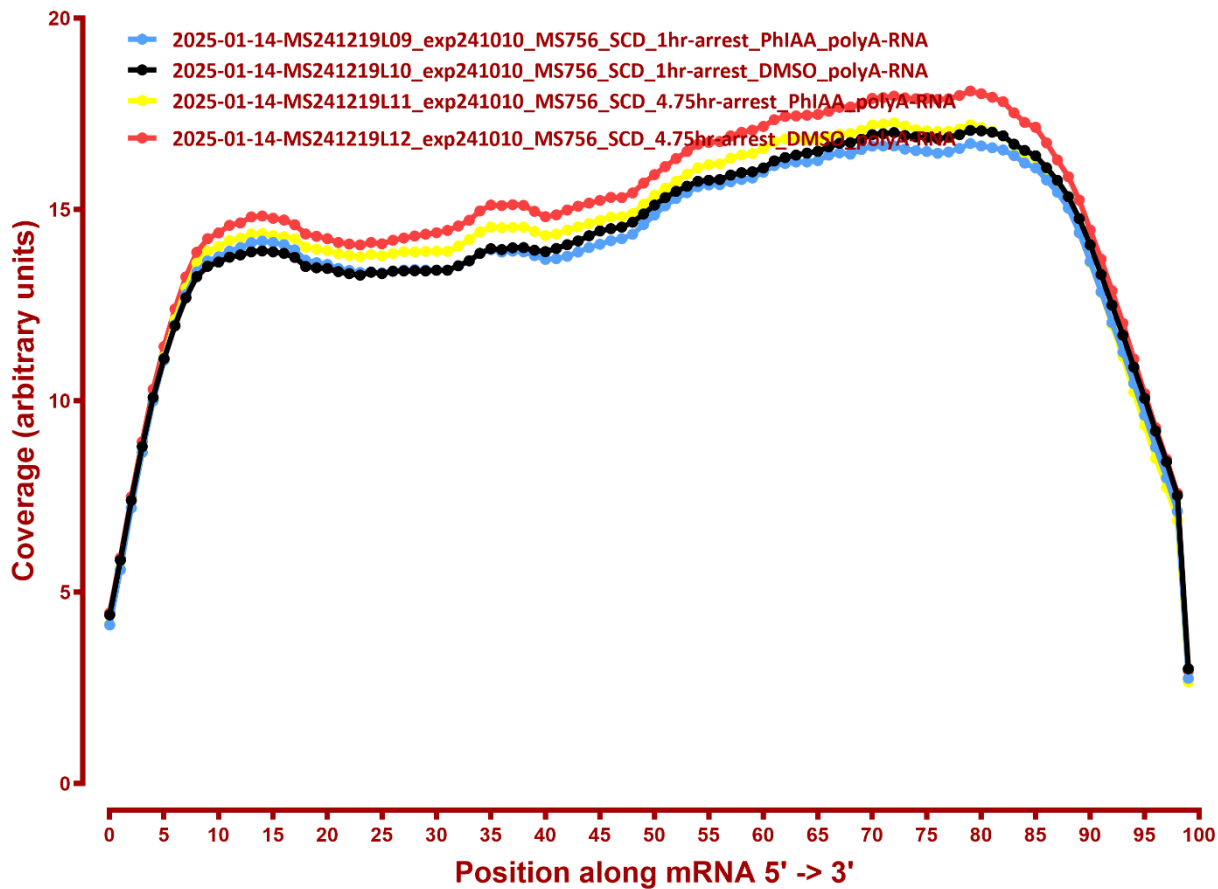
Coverage of genes; >1000bp, sacCer3



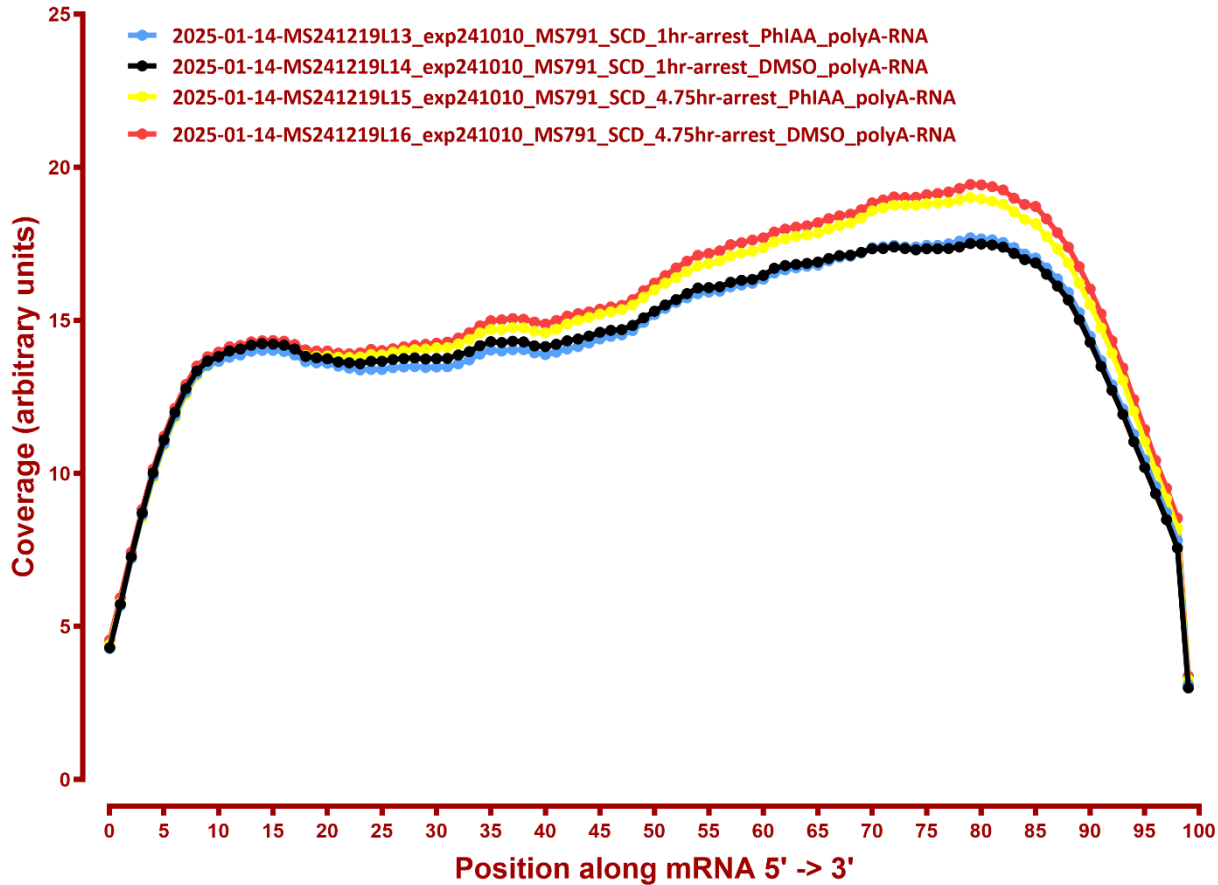
Coverage of genes; >1000bp, sacCer3



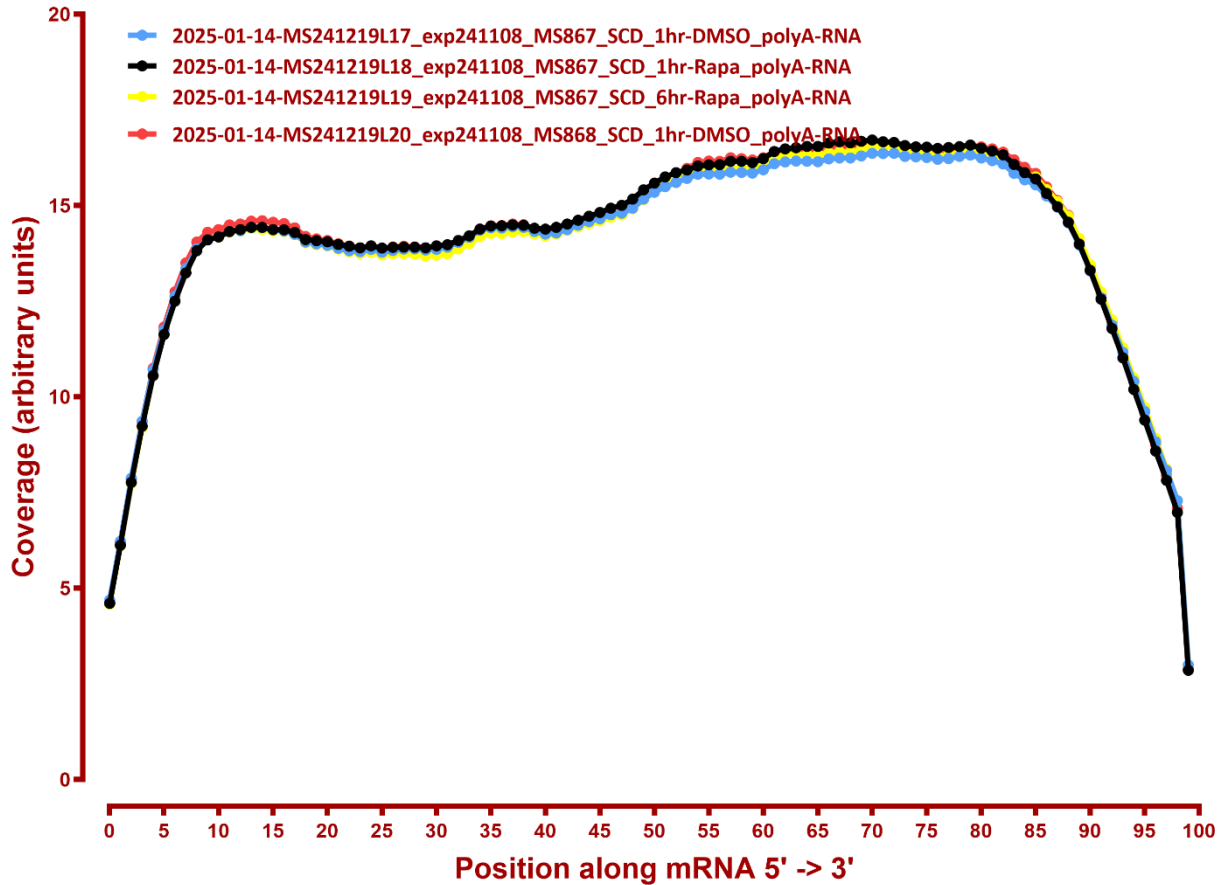
Coverage of genes; >1000bp, sacCer3



Coverage of genes; >1000bp, sacCer3



Coverage of genes; >1000bp, sacCer3



Coverage of genes; >1000bp, sacCer3

