

MAPPING STATS

Library	Read Length	Mapping	Species	Raw fragments	Complexity	Unique	Unique Splices	Multi	Multi Splices	Fraction mapped
2022-12-22-21122L01_exp221120_MS95_SCGEur-00M-BE_1hr-5uM-EU-03min-chase	2x150	STAR-2.5.3a	S.pombe	3,212,046	0.57	2,294,025	211,935	67,509	7,263	0.40
2022-12-22-21122L01_exp221120_MS95_SCGEur-00M-BE_1hr-5uM-EU-03min-chase	2x150	STAR-2.5.3a	sacCer3	3,212,046	0.59	2,997,449	73,405	183,433	5,181	0.51
2022-12-22-21122L02_exp221120_MS95_SCGEur-00M-BE_1hr-5uM-EU-08min-chase	2x150	STAR-2.5.3a	S.pombe	3,028,263	0.56	2,165,325	191,823	62,532	5,558	0.40
2022-12-22-21122L02_exp221120_MS95_SCGEur-00M-BE_1hr-5uM-EU-08min-chase	2x150	STAR-2.5.3a	sacCer3	3,028,263	0.58	2,910,587	69,353	182,284	3,964	0.52
2022-12-22-21122L03_exp221120_MS95_SCGEur-00M-BE_1hr-5uM-EU-13min-chase	2x150	STAR-2.5.3a	S.pombe	3,677,803	0.55	2,559,874	238,294	68,022	6,672	0.39
2022-12-22-21122L03_exp221120_MS95_SCGEur-00M-BE_1hr-5uM-EU-13min-chase	2x150	STAR-2.5.3a	sacCer3	3,677,803	0.56	3,498,144	83,030	210,329	4,761	0.52
2022-12-22-21122L04_exp221120_MS95_SCGEur-00M-BE_1hr-5uM-EU-23min-chase	2x150	STAR-2.5.3a	S.pombe	3,709,674	0.54	2,562,882	234,014	68,368	8,496	0.39
2022-12-22-21122L04_exp221120_MS95_SCGEur-00M-BE_1hr-5uM-EU-23min-chase	2x150	STAR-2.5.3a	sacCer3	3,709,674	0.55	3,548,720	80,476	210,774	4,750	0.52
2022-12-22-21122L05_exp221120_MS95_SCGEur-00M-BE_1hr-5uM-EU-35min-chase	2x150	STAR-2.5.3a	S.pombe	3,704,986	0.54	2,540,902	230,402	67,431	6,581	0.38
2022-12-22-21122L05_exp221120_MS95_SCGEur-00M-BE_1hr-5uM-EU-35min-chase	2x150	STAR-2.5.3a	sacCer3	3,704,986	0.56	3,642,177	76,541	203,736	4,916	0.53
2022-12-22-21122L06_exp221120_MS95_SCGEur-00M-BE_00uM-EU_input	2x150	STAR-2.5.3a	S.pombe	2,764,952	0.57	1,927,796	175,204	63,995	4,915	0.39
2022-12-22-21122L06_exp221120_MS95_SCGEur-00M-BE_00uM-EU_input	2x150	STAR-2.5.3a	sacCer3	2,764,952	0.59	2,652,517	64,997	157,208	3,598	0.52
2022-12-22-21122L07_exp221120_MS95_SCGEur-20M-BE_1hr-10uM-EU-03min-chase	2x150	STAR-2.5.3a	S.pombe	3,470,343	0.56	2,244,569	212,951	57,733	6,693	0.36
2022-12-22-21122L07_exp221120_MS95_SCGEur-20M-BE_1hr-10uM-EU-03min-chase	2x150	STAR-2.5.3a	sacCer3	3,470,343	0.57	3,406,661	80,979	175,929	4,515	0.53
2022-12-22-21122L08_exp221120_MS95_SCGEur-20M-BE_1hr-10uM-EU-08min-chase	2x150	STAR-2.5.3a	S.pombe	3,208,370	0.58	2,021,740	187,116	50,440	5,186	0.35
2022-12-22-21122L08_exp221120_MS95_SCGEur-20M-BE_1hr-10uM-EU-08min-chase	2x150	STAR-2.5.3a	sacCer3	3,208,370	0.59	3,258,258	74,742	167,025	4,505	0.55
2022-12-22-21122L09_exp221120_MS95_SCGEur-20M-BE_1hr-10uM-EU-13min-chase	2x150	STAR-2.5.3a	S.pombe	3,540,551	0.56	2,345,312	217,452	61,295	6,181	0.37
2022-12-22-21122L09_exp221120_MS95_SCGEur-20M-BE_1hr-10uM-EU-13min-chase	2x150	STAR-2.5.3a	sacCer3	3,540,551	0.57	3,518,524	82,008	179,740	4,672	0.53
2022-12-22-21122L10_exp221120_MS95_SCGEur-20M-BE_1hr-10uM-EU-23min-chase	2x150	STAR-2.5.3a	S.pombe	3,368,898	0.56	2,157,685	201,281	56,517	5,751	0.36
2022-12-22-21122L10_exp221120_MS95_SCGEur-20M-BE_1hr-10uM-EU-23min-chase	2x150	STAR-2.5.3a	sacCer3	3,368,898	0.57	3,411,367	83,449	176,248	4,366	0.55
2022-12-22-21122L11_exp221120_MS95_SCGEur-20M-BE_1hr-10uM-EU-35min-chase	2x150	STAR-2.5.3a	S.pombe	3,409,236	0.55	2,137,886	200,952	54,480	6,048	0.35
2022-12-22-21122L11_exp221120_MS95_SCGEur-20M-BE_1hr-10uM-EU-35min-chase	2x150	STAR-2.5.3a	sacCer3	3,409,236	0.56	3,551,506	84,114	175,533	3,973	0.56
2022-12-22-21122L12_exp221120_MS95_SCGEur-20M-BE_00uM-EU_input	2x150	STAR-2.5.3a	S.pombe	3,346,625	0.57	2,111,439	187,589	61,358	6,146	0.35
2022-12-22-21122L12_exp221120_MS95_SCGEur-20M-BE_00uM-EU_input	2x150	STAR-2.5.3a	sacCer3	3,346,625	0.58	3,553,425	79,389	192,660	4,964	0.57
2022-12-22-21122L13_exp221120_MS95_SCGEur-20M-BE_1hr-5uM-EU-03min-chase	2x150	STAR-2.5.3a	S.pombe	3,114,619	0.57	2,107,803	196,929	56,321	5,363	0.38
2022-12-22-21122L13_exp221120_MS95_SCGEur-20M-BE_1hr-5uM-EU-03min-chase	2x150	STAR-2.5.3a	sacCer3	3,114,619	0.60	2,988,173	73,243	157,939	4,105	0.52
2022-12-22-21122L14_exp221120_MS95_SCGEur-20M-BE_1hr-5uM-EU-08min-chase	2x150	STAR-2.5.3a	S.pombe	3,867,004	0.56	2,401,663	222,269	61,342	6,306	0.35
2022-12-22-21122L14_exp221120_MS95_SCGEur-20M-BE_1hr-5uM-EU-08min-chase	2x150	STAR-2.5.3a	sacCer3	3,867,004	0.57	3,972,424	92,860	201,416	5,408	0.55
2022-12-22-21122L15_exp221120_MS95_SCGEur-20M-BE_1hr-5uM-EU-13min-chase	2x150	STAR-2.5.3a	S.pombe	3,193,281	0.56	1,908,094	176,614	46,938	4,586	0.33
2022-12-22-21122L15_exp221120_MS95_SCGEur-20M-BE_1hr-5uM-EU-13min-chase	2x150	STAR-2.5.3a	sacCer3	3,193,281	0.56	3,384,756	75,058	174,799	5,011	0.57
2022-12-22-21122L16_exp221120_MS95_SCGEur-20M-BE_1hr-5uM-EU-23min-chase	2x150	STAR-2.5.3a	S.pombe	3,437,507	0.57	2,111,382	188,442	58,578	5,418	0.34
2022-12-22-21122L16_exp221120_MS95_SCGEur-20M-BE_1hr-5uM-EU-23min-chase	2x150	STAR-2.5.3a	sacCer3	3,437,507	0.58	3,526,027	78,483	190,981	4,299	0.55
2022-12-22-21122L17_exp221120_MS95_SCGEur-00M-BE_1hr-5uM-EU-03min-chase	2x150	STAR-2.5.3a	S.pombe	10,296,573	0.54	8,623,202	543,290	199,802	25,542	0.46
2022-12-22-21122L17_exp221120_MS95_SCGEur-00M-BE_1hr-5uM-EU-03min-chase	2x150	STAR-2.5.3a	sacCer3	10,296,573	0.56	8,379,325	135,127	505,736	16,528	0.44
2022-12-22-21122L18_exp221120_MS95_SCGEur-00M-BE_1hr-5uM-EU-08min-chase	2x150	STAR-2.5.3a	S.pombe	10,279,240	0.53	9,656,297	598,995	229,302	26,452	0.51
2022-12-22-21122L18_exp221120_MS95_SCGEur-00M-BE_1hr-5uM-EU-08min-chase	2x150	STAR-2.5.3a	sacCer3	10,279,240	0.55	7,401,593	136,835	504,598	15,548	0.39
2022-12-22-21122L19_exp221120_MS95_SCGEur-00M-BE_1hr-5uM-EU-13min-chase	2x150	STAR-2.5.3a	S.pombe	11,950,443	0.50	13,047,761	826,119	292,998	41,022	0.59
2022-12-22-21122L19_exp221120_MS95_SCGEur-00M-BE_1hr-5uM-EU-13min-chase	2x150	STAR-2.5.3a	sacCer3	11,950,443	0.52	7,077,772	152,520	538,251	15,011	0.33
2022-12-22-21122L20_exp221120_MS95_SCGEur-00M-BE_1hr-5uM-EU-23min-chase	2x150	STAR-2.5.3a	S.pombe	9,699,878	0.51	13,039,247	825,711	286,683	44,465	0.73
2022-12-22-21122L20_exp221120_MS95_SCGEur-00M-BE_1hr-5uM-EU-23min-chase	2x150	STAR-2.5.3a	sacCer3	9,699,878	0.56	3,004,296	74,896	309,059	6,901	0.18
2022-12-22-21122L21_exp221120_MS95_SCGEur-00M-BE_1hr-5uM-EU-35min-chase	2x150	STAR-2.5.3a	S.pombe	10,829,354	0.49	16,387,596	1,034,322	380,412	61,800	0.82
2022-12-22-21122L21_exp221120_MS95_SCGEur-00M-BE_1hr-5uM-EU-35min-chase	2x150	STAR-2.5.3a	sacCer3	10,829,354	0.61	1,555,395	34,007	260,919	3,529	0.09
2022-12-22-21122L22_exp221120_MS95_SCGEur-00M-BE_00uM-EU_EU-enrich	2x150	STAR-2.5.3a	S.pombe	9,752,902	0.49	15,818,602	997,112	440,127	57,969	0.89
2022-12-22-21122L22_exp221120_MS95_SCGEur-00M-BE_00uM-EU_EU-enrich	2x150	STAR-2.5.3a	sacCer3	9,752,902	0.68	303,739	6,093	167,379	1,739	0.02
2022-12-22-21122L23_exp221120_MS95_SCGEur-20M-BE_1hr-10uM-EU-03min-chase	2x150	STAR-2.5.3a	S.pombe	9,882,291	0.53	8,735,511	546,735	183,202	26,134	0.48
2022-12-22-21122L23_exp221120_MS95_SCGEur-20M-BE_1hr-10uM-EU-03min-chase	2x150	STAR-2.5.3a	sacCer3	9,882,291	0.56	8,073,286	115,724	399,945	12,469	0.44
2022-12-22-21122L24_exp221120_MS95_SCGEur-20M-BE_1hr-10uM-EU-08min-chase	2x150	STAR-2.5.3a	S.pombe	9,629,101	0.54	8,755,389	550,195	218,690	24,702	0.50
2022-12-22-21122L24_exp221120_MS95_SCGEur-20M-BE_1hr-10uM-EU-08min-chase	2x150	STAR-2.5.3a	sacCer3	9,629,101	0.56	7,321,445	115,585	437,139	12,739	0.41

MAPPING STATS

2022-12-22-221122L25_exp221120_MS95_SCGEuri-20nM-BE_1hr-10uM-EU-13min-chase	2x150	STAR-2.5.3a	S.pombe	10,228,457	0.52	10,999,222	696,920	240,521	35,545	0.59
2022-12-22-221122L25_exp221120_MS95_SCGEuri-20nM-BE_1hr-10uM-EU-13min-chase	2x150	STAR-2.5.3a	sacCer3	10,228,457	0.55	5,927,097	115,361	347,786	10,316	0.31
2022-12-22-221122L26_exp221120_MS95_SCGEuri-20nM-BE_1hr-10uM-EU-23min-chase	2x150	STAR-2.5.3a	S.pombe	10,566,996	0.50	13,516,909	851,605	293,701	44,449	0.70
2022-12-22-221122L26_exp221120_MS95_SCGEuri-20nM-BE_1hr-10uM-EU-23min-chase	2x150	STAR-2.5.3a	sacCer3	10,566,996	0.54	3,977,521	101,103	315,114	9,126	0.21
2022-12-22-221122L27_exp221120_MS95_SCGEuri-20nM-BE_1hr-10uM-EU-35min-chase	2x150	STAR-2.5.3a	S.pombe	5,759,979	0.60	6,047,330	381,292	124,364	16,916	0.57
2022-12-22-221122L27_exp221120_MS95_SCGEuri-20nM-BE_1hr-10uM-EU-35min-chase	2x150	STAR-2.5.3a	sacCer3	5,759,979	0.68	662,795	19,937	74,548	1,236	0.07
2022-12-22-221122L28_exp221120_MS95_SCGEuri-20nM-BE_00uM-EU_EU-enrich	2x150	STAR-2.5.3a	S.pombe	9,411,806	0.50	15,206,190	919,990	345,294	57,574	0.88
2022-12-22-221122L28_exp221120_MS95_SCGEuri-20nM-BE_00uM-EU_EU-enrich	2x150	STAR-2.5.3a	sacCer3	9,411,806	0.69	368,790	6,668	233,144	1,090	0.03
-12-22-221122L29_exp221120_MS95_SCGEuri-20nM-BE_1hr-5uM-EU-03min-chase_EU-e	2x150	STAR-2.5.3a	S.pombe	9,867,002	0.53	10,817,206	673,504	333,775	34,793	0.60
-12-22-221122L29_exp221120_MS95_SCGEuri-20nM-BE_1hr-5uM-EU-03min-chase_EU-e	2x150	STAR-2.5.3a	sacCer3	9,867,002	0.60	5,650,961	84,319	293,593	8,183	0.31
-12-22-221122L30_exp221120_MS95_SCGEuri-20nM-BE_1hr-5uM-EU-08min-chase_EU-e	2x150	STAR-2.5.3a	S.pombe	11,084,093	0.50	12,314,702	768,006	264,319	39,573	0.60
-12-22-221122L30_exp221120_MS95_SCGEuri-20nM-BE_1hr-5uM-EU-08min-chase_EU-e	2x150	STAR-2.5.3a	sacCer3	11,084,093	0.56	6,041,080	99,426	333,796	10,912	0.29
-12-22-221122L31_exp221120_MS95_SCGEuri-20nM-BE_1hr-5uM-EU-13min-chase_EU-e	2x150	STAR-2.5.3a	S.pombe	10,953,173	0.50	13,135,141	816,475	287,261	43,325	0.65
-12-22-221122L31_exp221120_MS95_SCGEuri-20nM-BE_1hr-5uM-EU-13min-chase_EU-e	2x150	STAR-2.5.3a	sacCer3	10,953,173	0.55	4,908,823	90,143	318,267	9,049	0.24
-12-22-221122L32_exp221120_MS95_SCGEuri-20nM-BE_1hr-5uM-EU-23min-chase_EU-e	2x150	STAR-2.5.3a	S.pombe	10,502,681	0.48	14,850,119	888,213	328,809	54,257	0.77
-12-22-221122L32_exp221120_MS95_SCGEuri-20nM-BE_1hr-5uM-EU-23min-chase_EU-e	2x150	STAR-2.5.3a	sacCer3	10,502,681	0.54	2,542,430	59,434	229,915	5,761	0.14
22-12-22-221205L01_exp221129_MS95_SCGEuri-00nM-BE_1hr-5uM-EU-03min-chase_inp	2x150	STAR-2.5.3a	S.pombe	3,774,656	0.56	2,466,063	245,935	73,613	6,831	0.37
22-12-22-221205L01_exp221129_MS95_SCGEuri-00nM-BE_1hr-5uM-EU-03min-chase_inp	2x150	STAR-2.5.3a	sacCer3	3,774,656	0.57	3,591,481	106,095	218,187	4,393	0.52
22-12-22-221205L02_exp221129_MS95_SCGEuri-00nM-BE_1hr-5uM-EU-08min-chase_inp	2x150	STAR-2.5.3a	S.pombe	4,482,570	0.54	3,070,595	292,737	146,418	8,714	0.39
22-12-22-221205L02_exp221129_MS95_SCGEuri-00nM-BE_1hr-5uM-EU-08min-chase_inp	2x150	STAR-2.5.3a	sacCer3	4,482,570	0.55	4,178,491	117,979	322,526	5,576	0.52
22-12-22-221205L03_exp221129_MS95_SCGEuri-00nM-BE_1hr-5uM-EU-13min-chase_inp	2x150	STAR-2.5.3a	S.pombe	3,746,768	0.56	2,509,085	236,501	84,820	7,018	0.38
22-12-22-221205L03_exp221129_MS95_SCGEuri-00nM-BE_1hr-5uM-EU-13min-chase_inp	2x150	STAR-2.5.3a	sacCer3	3,746,768	0.58	3,590,636	94,420	237,590	4,598	0.52
22-12-22-221205L04_exp221129_MS95_SCGEuri-00nM-BE_1hr-5uM-EU-23min-chase_inp	2x150	STAR-2.5.3a	S.pombe	4,011,998	0.55	2,744,152	262,744	87,032	7,406	0.39
22-12-22-221205L04_exp221129_MS95_SCGEuri-00nM-BE_1hr-5uM-EU-23min-chase_inp	2x150	STAR-2.5.3a	sacCer3	4,011,998	0.56	3,853,233	100,615	241,732	4,568	0.52
22-12-22-221205L05_exp221129_MS95_SCGEuri-00nM-BE_1hr-5uM-EU-35min-chase_inp	2x150	STAR-2.5.3a	S.pombe	3,823,664	0.57	2,466,612	241,714	66,780	6,692	0.36
22-12-22-221205L05_exp221129_MS95_SCGEuri-00nM-BE_1hr-5uM-EU-35min-chase_inp	2x150	STAR-2.5.3a	sacCer3	3,823,664	0.58	3,884,111	98,299	211,120	5,042	0.55
2022-12-22-221205L06_exp221129_MS95_SCGEuri-00nM-BE_00uM-EU_input	2x150	STAR-2.5.3a	S.pombe	4,067,321	0.57	2,238,865	214,271	64,956	6,072	0.31
2022-12-22-221205L06_exp221129_MS95_SCGEuri-00nM-BE_00uM-EU_input	2x150	STAR-2.5.3a	sacCer3	4,067,321	0.56	4,520,117	123,701	258,041	4,881	0.60
22-12-22-221205L07_exp221129_MS95_SCGEuri-20nM-BE_1hr-10uM-EU-03min-chase_in	2x150	STAR-2.5.3a	S.pombe	3,668,548	0.58	2,340,877	221,921	69,467	6,861	0.36
22-12-22-221205L07_exp221129_MS95_SCGEuri-20nM-BE_1hr-10uM-EU-03min-chase_in	2x150	STAR-2.5.3a	sacCer3	3,668,548	0.59	3,709,831	97,905	198,084	4,500	0.55
22-12-22-221205L08_exp221129_MS95_SCGEuri-20nM-BE_1hr-10uM-EU-08min-chase_in	2x150	STAR-2.5.3a	S.pombe	4,318,153	0.56	2,764,400	256,548	90,870	7,066	0.36
22-12-22-221205L08_exp221129_MS95_SCGEuri-20nM-BE_1hr-10uM-EU-08min-chase_in	2x150	STAR-2.5.3a	sacCer3	4,318,153	0.58	4,327,840	111,676	245,161	4,879	0.54
22-12-22-221205L09_exp221129_MS95_SCGEuri-20nM-BE_1hr-10uM-EU-13min-chase_in	2x150	STAR-2.5.3a	S.pombe	3,961,901	0.56	2,401,608	246,118	70,761	6,441	0.34
22-12-22-221205L09_exp221129_MS95_SCGEuri-20nM-BE_1hr-10uM-EU-13min-chase_in	2x150	STAR-2.5.3a	sacCer3	3,961,901	0.57	3,861,232	110,262	211,786	4,870	0.53
22-12-22-221205L10_exp221129_MS95_SCGEuri-20nM-BE_1hr-10uM-EU-23min-chase_in	2x150	STAR-2.5.3a	S.pombe	3,852,520	0.56	2,535,194	235,096	71,282	7,370	0.37
22-12-22-221205L10_exp221129_MS95_SCGEuri-20nM-BE_1hr-10uM-EU-23min-chase_in	2x150	STAR-2.5.3a	sacCer3	3,852,520	0.57	3,814,643	100,389	202,313	5,379	0.54
22-12-22-221205L11_exp221129_MS95_SCGEuri-20nM-BE_1hr-10uM-EU-35min-chase_in	2x150	STAR-2.5.3a	S.pombe	4,208,246	0.55	2,639,400	241,686	70,079	8,129	0.35
22-12-22-221205L11_exp221129_MS95_SCGEuri-20nM-BE_1hr-10uM-EU-35min-chase_in	2x150	STAR-2.5.3a	sacCer3	4,208,246	0.56	4,375,099	108,251	217,552	4,902	0.56
2022-12-22-221205L12_exp221129_MS95_SCGEuri-20nM-BE_00uM-EU_input	2x150	STAR-2.5.3a	S.pombe	3,929,684	0.57	2,106,334	198,522	52,555	5,365	0.30
2022-12-22-221205L12_exp221129_MS95_SCGEuri-20nM-BE_00uM-EU_input	2x150	STAR-2.5.3a	sacCer3	3,929,684	0.57	4,354,385	114,457	220,224	6,632	0.60
22-12-22-221205L13_exp221129_MS95_SCGEuri-20nM-BE_1hr-5uM-EU-03min-chase_inp	2x150	STAR-2.5.3a	S.pombe	4,014,496	0.58	2,053,486	198,512	50,052	6,440	0.29
22-12-22-221205L13_exp221129_MS95_SCGEuri-20nM-BE_1hr-5uM-EU-03min-chase_inp	2x150	STAR-2.5.3a	sacCer3	4,014,496	0.56	4,632,377	128,449	225,189	5,937	0.62
22-12-22-221205L14_exp221129_MS95_SCGEuri-20nM-BE_1hr-5uM-EU-08min-chase_in	2x150	STAR-2.5.3a	S.pombe	4,302,723	0.56	2,585,320	249,478	66,124	7,920	0.34
22-12-22-221205L14_exp221129_MS95_SCGEuri-20nM-BE_1hr-5uM-EU-08min-chase_in	2x150	STAR-2.5.3a	sacCer3	4,302,723	0.56	4,567,374	125,482	224,811	5,843	0.57
22-12-22-221205L15_exp221129_MS95_SCGEuri-20nM-BE_1hr-5uM-EU-13min-chase_inp	2x150	STAR-2.5.3a	S.pombe	3,831,704	0.55	2,261,290	218,414	64,871	7,857	0.33
22-12-22-221205L15_exp221129_MS95_SCGEuri-20nM-BE_1hr-5uM-EU-13min-chase_inp	2x150	STAR-2.5.3a	sacCer3	3,831,704	0.55	4,050,369	109,995	212,582	5,068	0.57
22-12-22-221205L16_exp221129_MS95_SCGEuri-20nM-BE_1hr-5uM-EU-23min-chase_inp	2x150	STAR-2.5.3a	S.pombe	3,839,775	0.58	1,983,631	185,133	367,050	5,956	0.33
22-12-22-221205L16_exp221129_MS95_SCGEuri-20nM-BE_1hr-5uM-EU-23min-chase_inp	2x150	STAR-2.5.3a	sacCer3	3,839,775	0.58	3,585,959	98,315	766,019	9,297	0.58

MAPPING STATS

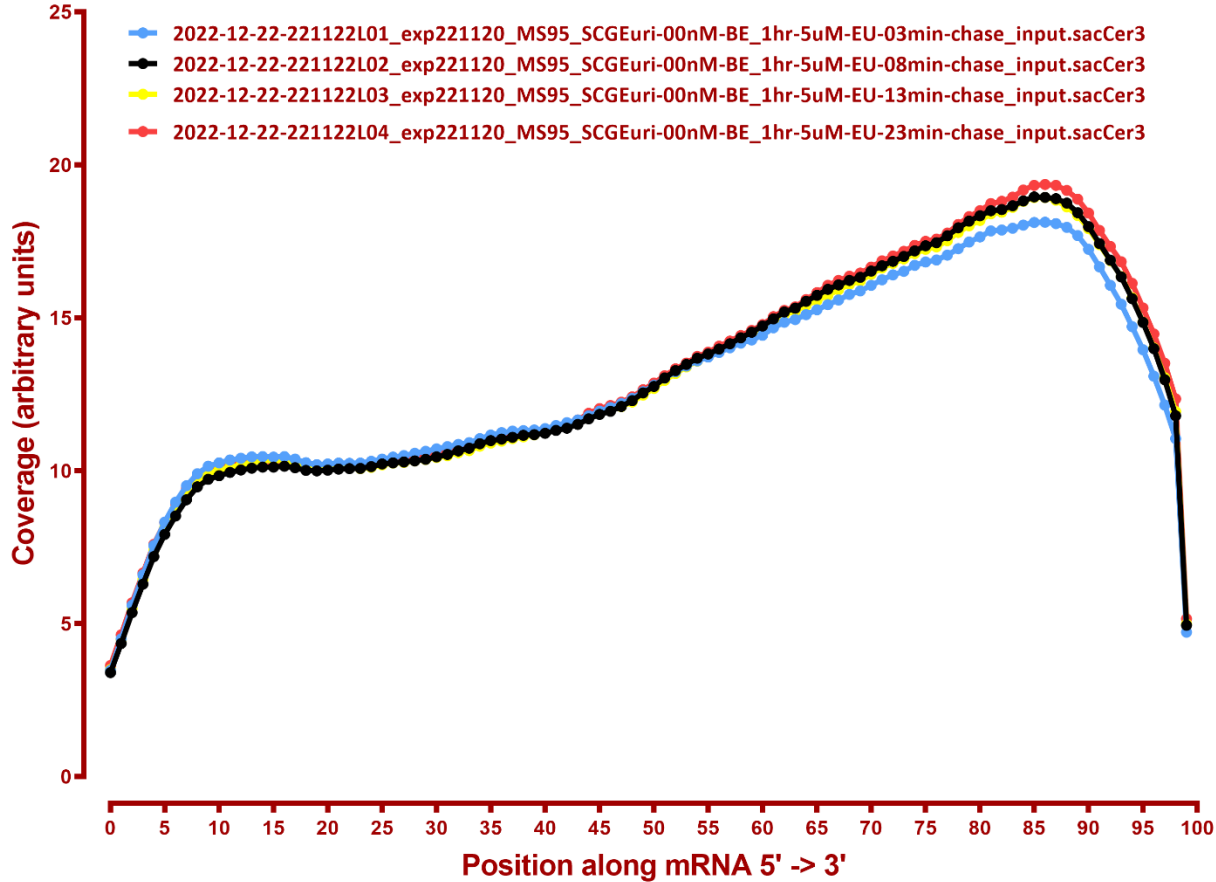
12-22-22-221205L17_exp221129_MS95_SCGEur-20M-BE_1hr-5uM-EU-35min-chase_in	2x150	STAR-2.5.3a	S.pombe	4,646,763	0.55	2,627,818	244,672	72,236	8,066	0.32
12-22-22-221205L17_exp221129_MS95_SCGEur-20M-BE_1hr-5uM-EU-35min-chase_in	2x150	STAR-2.5.3a	sacCer3	4,646,763	0.55	5,059,289	121,827	260,595	7,563	0.59
12-22-22-221205L18_exp221120_MS95_SCGEur-20M-BE_1hr-5uM-EU-35min-chase_in	2x150	STAR-2.5.3a	S.pombe	5,086,355	0.56	2,807,746	245,682	74,626	8,902	0.31
12-22-22-221205L18_exp221120_MS95_SCGEur-20M-BE_1hr-5uM-EU-35min-chase_in	2x150	STAR-2.5.3a	sacCer3	5,086,355	0.56	5,568,136	137,380	293,987	7,549	0.59
12-22-22-221205L19_exp221129_MS95_SCGEur-00M-BE_1hr-5uM-EU-03min-chase_EU-e	2x150	STAR-2.5.3a	S.pombe	9,689,729	0.54	8,581,101	553,897	186,212	26,028	0.48
12-22-22-221205L19_exp221129_MS95_SCGEur-00M-BE_1hr-5uM-EU-03min-chase_EU-e	2x150	STAR-2.5.3a	sacCer3	9,689,729	0.56	7,401,934	126,380	434,454	15,768	0.41
12-22-22-221205L20_exp221129_MS95_SCGEur-00M-BE_1hr-5uM-EU-08min-chase_EU-e	2x150	STAR-2.5.3a	S.pombe	11,066,485	0.51	10,859,624	715,602	321,520	36,908	0.54
12-22-22-221205L20_exp221129_MS95_SCGEur-00M-BE_1hr-5uM-EU-08min-chase_EU-e	2x150	STAR-2.5.3a	sacCer3	11,066,485	0.54	6,994,264	144,968	527,134	15,392	0.35
12-22-22-221205L21_exp221129_MS95_SCGEur-00M-BE_1hr-5uM-EU-13min-chase_EU-e	2x150	STAR-2.5.3a	S.pombe	9,110,517	0.53	10,544,663	675,559	241,889	33,611	0.63
12-22-22-221205L21_exp221129_MS95_SCGEur-00M-BE_1hr-5uM-EU-13min-chase_EU-e	2x150	STAR-2.5.3a	sacCer3	9,110,517	0.56	4,365,563	104,499	341,803	9,121	0.26
12-22-22-221205L22_exp221129_MS95_SCGEur-00M-BE_1hr-5uM-EU-23min-chase_EU-e	2x150	STAR-2.5.3a	S.pombe	9,589,731	0.51	13,121,759	850,737	308,450	43,702	0.75
12-22-22-221205L22_exp221129_MS95_SCGEur-00M-BE_1hr-5uM-EU-23min-chase_EU-e	2x150	STAR-2.5.3a	sacCer3	9,589,731	0.57	2,506,912	70,890	263,037	5,355	0.15
12-22-22-221205L23_exp221129_MS95_SCGEur-00M-BE_1hr-5uM-EU-35min-chase_EU-e	2x150	STAR-2.5.3a	S.pombe	9,810,528	0.49	14,638,438	982,180	305,562	49,252	0.81
12-22-22-221205L23_exp221129_MS95_SCGEur-00M-BE_1hr-5uM-EU-35min-chase_EU-e	2x150	STAR-2.5.3a	sacCer3	9,810,528	0.60	1,564,700	43,376	169,614	2,940	0.09
2022-12-22-221205L24_exp221129_MS95_SCGEur-00M-BE_00uM-EU_EU-enrich	2x150	STAR-2.5.3a	S.pombe	10,405,940	0.50	15,748,269	1,035,045	349,915	58,223	0.83
2022-12-22-221205L24_exp221129_MS95_SCGEur-00M-BE_00uM-EU_EU-enrich	2x150	STAR-2.5.3a	sacCer3	10,405,940	0.64	1,183,842	31,962	99,610	4,360	0.06
12-22-22-221205L25_exp221129_MS95_SCGEur-20M-BE_1hr-10uM-EU-03min-chase_EU-e	2x150	STAR-2.5.3a	S.pombe	10,041,883	0.52	9,395,507	599,713	208,466	28,772	0.51
12-22-22-221205L25_exp221129_MS95_SCGEur-20M-BE_1hr-10uM-EU-03min-chase_EU-e	2x150	STAR-2.5.3a	sacCer3	10,041,883	0.55	7,304,864	112,558	375,112	12,334	0.39
12-22-22-221205L26_exp221129_MS95_SCGEur-20M-BE_1hr-10uM-EU-08min-chase_EU-e	2x150	STAR-2.5.3a	S.pombe	10,626,360	0.50	10,285,266	659,192	251,261	31,067	0.53
12-22-22-221205L26_exp221129_MS95_SCGEur-20M-BE_1hr-10uM-EU-08min-chase_EU-e	2x150	STAR-2.5.3a	sacCer3	10,626,360	0.53	6,814,710	119,894	398,643	10,919	0.35
12-22-22-221205L27_exp221129_MS95_SCGEur-20M-BE_1hr-10uM-EU-13min-chase_EU-e	2x150	STAR-2.5.3a	S.pombe	9,202,413	0.53	10,209,270	668,288	219,190	34,836	0.60
12-22-22-221205L27_exp221129_MS95_SCGEur-20M-BE_1hr-10uM-EU-13min-chase_EU-e	2x150	STAR-2.5.3a	sacCer3	9,202,413	0.56	4,864,556	101,318	315,836	8,176	0.29
12-22-22-221205L28_exp221129_MS95_SCGEur-20M-BE_1hr-10uM-EU-23min-chase_EU-e	2x150	STAR-2.5.3a	S.pombe	9,126,687	0.51	12,043,112	762,502	255,187	39,667	0.72
12-22-22-221205L28_exp221129_MS95_SCGEur-20M-BE_1hr-10uM-EU-23min-chase_EU-e	2x150	STAR-2.5.3a	sacCer3	9,126,687	0.56	2,808,804	76,132	214,814	4,452	0.17
12-22-22-221205L29_exp221129_MS95_SCGEur-20M-BE_1hr-10uM-EU-35min-chase_EU-e	2x150	STAR-2.5.3a	S.pombe	10,773,055	0.49	15,811,980	993,672	330,123	57,349	0.80
12-22-22-221205L29_exp221129_MS95_SCGEur-20M-BE_1hr-10uM-EU-35min-chase_EU-e	2x150	STAR-2.5.3a	sacCer3	10,773,055	0.58	1,745,773	52,069	169,876	3,238	0.09
2022-12-22-221205L30_exp221129_MS95_SCGEur-20M-BE_00uM-EU_EU-enrich	2x150	STAR-2.5.3a	S.pombe	9,406,326	0.51	14,624,703	940,339	291,141	49,941	0.85
2022-12-22-221205L30_exp221129_MS95_SCGEur-20M-BE_00uM-EU_EU-enrich	2x150	STAR-2.5.3a	sacCer3	9,406,326	0.66	707,441	20,567	75,515	707	0.04
12-22-22-221205L31_exp221129_MS95_SCGEur-20M-BE_1hr-5uM-EU-03min-chase_EU-e	2x150	STAR-2.5.3a	S.pombe	10,464,883	0.51	10,367,139	683,433	202,875	31,639	0.54
12-22-22-221205L31_exp221129_MS95_SCGEur-20M-BE_1hr-5uM-EU-03min-chase_EU-e	2x150	STAR-2.5.3a	sacCer3	10,464,883	0.55	6,872,863	115,767	323,416	11,274	0.35
12-22-22-221205L32_exp221129_MS95_SCGEur-20M-BE_1hr-5uM-EU-08min-chase_EU-e	2x150	STAR-2.5.3a	S.pombe	16,579,755	0.48	19,123,936	1,234,258	393,597	69,461	0.63
12-22-22-221205L32_exp221129_MS95_SCGEur-20M-BE_1hr-5uM-EU-08min-chase_EU-e	2x150	STAR-2.5.3a	sacCer3	16,579,755	0.54	8,221,306	150,864	447,117	19,539	0.27
12-22-22-221205L33_exp221129_MS95_SCGEur-20M-BE_1hr-5uM-EU-13min-chase_EU-e	2x150	STAR-2.5.3a	S.pombe	12,125,123	0.47	15,118,173	966,013	318,937	50,259	0.68
12-22-22-221205L33_exp221129_MS95_SCGEur-20M-BE_1hr-5uM-EU-13min-chase_EU-e	2x150	STAR-2.5.3a	sacCer3	12,125,123	0.52	4,656,000	101,320	305,630	7,732	0.21
12-22-22-221205L34_exp221129_MS95_SCGEur-20M-BE_1hr-5uM-EU-23min-chase_EU-e	2x150	STAR-2.5.3a	S.pombe	9,105,134	0.52	11,528,417	726,629	914,848	40,274	0.73
12-22-22-221205L34_exp221129_MS95_SCGEur-20M-BE_1hr-5uM-EU-23min-chase_EU-e	2x150	STAR-2.5.3a	sacCer3	9,105,134	0.58	2,485,218	65,202	559,400	5,944	0.17
12-22-22-221205L35_exp221129_MS95_SCGEur-20M-BE_1hr-5uM-EU-35min-chase_EU-e	2x150	STAR-2.5.3a	S.pombe	9,892,182	0.50	14,846,074	942,916	315,708	49,810	0.82
12-22-22-221205L35_exp221129_MS95_SCGEur-20M-BE_1hr-5uM-EU-35min-chase_EU-e	2x150	STAR-2.5.3a	sacCer3	9,892,182	0.59	1,291,968	38,314	154,619	2,039	0.08
12-22-22-221205L36_exp221120_MS95_SCGEur-20M-BE_1hr-5uM-EU-35min-chase_EU-e	2x150	STAR-2.5.3a	S.pombe	8,602,286	0.48	12,109,447	705,223	259,138	44,138	0.76
12-22-22-221205L36_exp221120_MS95_SCGEur-20M-BE_1hr-5uM-EU-35min-chase_EU-e	2x150	STAR-2.5.3a	sacCer3	8,602,286	0.57	1,102,418	33,468	152,811	1,765	0.08
2-12-22-221209L01_exp221207_MS96_SCGEur_1.5hr-G1-arrest_10uM-EU-04min-chase_j	2x150	STAR-2.5.3a	S.pombe	4,509,420	0.55	3,308,772	308,002	92,642	10,494	0.41
2-12-22-221209L01_exp221207_MS96_SCGEur_1.5hr-G1-arrest_10uM-EU-04min-chase_j	2x150	STAR-2.5.3a	sacCer3	4,509,420	0.57	4,063,630	104,896	220,414	5,486	0.49
2-12-22-221209L02_exp221207_MS96_SCGEur_1.5hr-G1-arrest_10uM-EU-10min-chase_j	2x150	STAR-2.5.3a	S.pombe	4,866,024	0.54	3,652,715	342,223	100,937	11,419	0.42
2-12-22-221209L02_exp221207_MS96_SCGEur_1.5hr-G1-arrest_10uM-EU-10min-chase_j	2x150	STAR-2.5.3a	sacCer3	4,866,024	0.57	4,319,228	112,148	249,455	5,951	0.48
2-12-22-221209L03_exp221207_MS96_SCGEur_1.5hr-G1-arrest_10uM-EU-16min-chase_j	2x150	STAR-2.5.3a	S.pombe	5,341,333	0.54	3,802,796	337,992	107,763	13,215	0.40
2-12-22-221209L03_exp221207_MS96_SCGEur_1.5hr-G1-arrest_10uM-EU-16min-chase_j	2x150	STAR-2.5.3a	sacCer3	5,341,333	0.55	4,967,975	126,655	288,321	6,801	0.50
2-12-22-221209L04_exp221207_MS96_SCGEur_1.5hr-G1-arrest_10uM-EU-28min-chase_j	2x150	STAR-2.5.3a	S.pombe	4,886,706	0.55	3,506,431	313,681	98,706	8,858	0.40
2-12-22-221209L04_exp221207_MS96_SCGEur_1.5hr-G1-arrest_10uM-EU-28min-chase_j	2x150	STAR-2.5.3a	sacCer3	4,886,706	0.57	4,471,508	111,650	258,538	6,892	0.50
2-12-22-221209L05_exp221207_MS96_SCGEur_1.5hr-G1-arrest_10uM-EU-40min-chase_j	2x150	STAR-2.5.3a	S.pombe	5,305,416	0.53	3,769,593	338,403	109,310	11,772	0.40
2-12-22-221209L05_exp221207_MS96_SCGEur_1.5hr-G1-arrest_10uM-EU-40min-chase_j	2x150	STAR-2.5.3a	sacCer3	5,305,416	0.54	4,966,069	113,005	271,093	7,735	0.50

MAPPING STATS

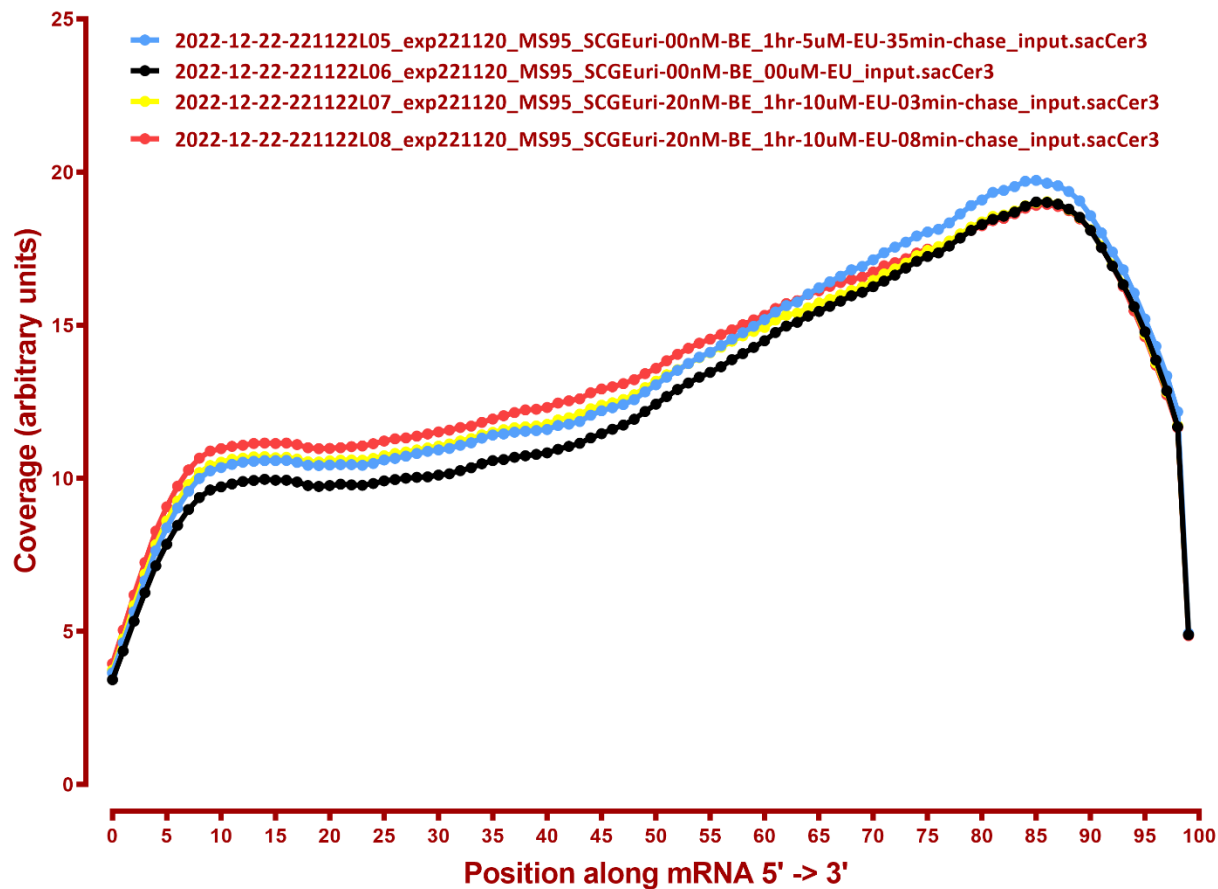
2022-12-22-221209L06_exp221207_MS96_SCGEuri_1.5hr-G1-arrest_00uM-EU_input	2x150	STAR-2.5.3a	S.pombe	4,650,453	0.57	3,031,135	268,399	88,408	8,178	0.37
2022-12-22-221209L06_exp221207_MS96_SCGEuri_1.5hr-G1-arrest_00uM-EU_input	2x150	STAR-2.5.3a	sacCer3	4,650,453	0.58	4,595,202	114,308	258,807	6,543	0.53
22-12-22-221209L07_exp221207_MS96_SCGEuri_7hr-G1-arrest_10uM-EU-04min-chase_in	2x150	STAR-2.5.3a	S.pombe	4,750,131	0.55	3,899,180	344,406	115,215	11,629	0.46
22-12-22-221209L07_exp221207_MS96_SCGEuri_7hr-G1-arrest_10uM-EU-04min-chase_in	2x150	STAR-2.5.3a	sacCer3	4,750,131	0.58	3,779,027	84,573	271,284	6,768	0.44
22-12-22-221209L08_exp221207_MS96_SCGEuri_7hr-G1-arrest_10uM-EU-10min-chase_in	2x150	STAR-2.5.3a	S.pombe	5,427,843	0.53	4,341,101	391,721	124,739	14,259	0.45
22-12-22-221209L08_exp221207_MS96_SCGEuri_7hr-G1-arrest_10uM-EU-10min-chase_in	2x150	STAR-2.5.3a	sacCer3	5,427,843	0.56	4,422,042	101,624	313,422	8,184	0.45
22-12-22-221209L09_exp221207_MS96_SCGEuri_7hr-G1-arrest_10uM-EU-16min-chase_in	2x150	STAR-2.5.3a	S.pombe	4,844,316	0.56	3,891,735	352,859	118,159	13,029	0.45
22-12-22-221209L09_exp221207_MS96_SCGEuri_7hr-G1-arrest_10uM-EU-16min-chase_in	2x150	STAR-2.5.3a	sacCer3	4,844,316	0.58	3,818,813	91,241	287,093	7,741	0.43
22-12-22-221209L10_exp221207_MS96_SCGEuri_7hr-G1-arrest_10uM-EU-28min-chase_in	2x150	STAR-2.5.3a	S.pombe	5,245,912	0.54	4,236,920	377,494	128,856	12,164	0.45
22-12-22-221209L10_exp221207_MS96_SCGEuri_7hr-G1-arrest_10uM-EU-28min-chase_in	2x150	STAR-2.5.3a	sacCer3	5,245,912	0.57	4,155,936	99,294	325,109	8,911	0.44
22-12-22-221209L11_exp221207_MS96_SCGEuri_7hr-G1-arrest_10uM-EU-40min-chase_in	2x150	STAR-2.5.3a	S.pombe	4,729,721	0.55	3,677,240	336,314	102,018	10,962	0.44
22-12-22-221209L11_exp221207_MS96_SCGEuri_7hr-G1-arrest_10uM-EU-40min-chase_in	2x150	STAR-2.5.3a	sacCer3	4,729,721	0.57	3,916,037	93,223	287,613	8,549	0.46
2022-12-22-221209L12_exp221207_MS96_SCGEuri_7hr-G1-arrest_00uM-EU_input	2x150	STAR-2.5.3a	S.pombe	4,835,144	0.56	3,189,756	295,488	86,408	11,286	0.37
2022-12-22-221209L12_exp221207_MS96_SCGEuri_7hr-G1-arrest_00uM-EU_input	2x150	STAR-2.5.3a	sacCer3	4,835,144	0.57	4,589,210	102,358	312,925	8,519	0.52
2-22-221209L13_exp221207_MS96_SCGEuri_1.5hr-G1-arrest_10uM-EU-04min-chase_EU	2x150	STAR-2.5.3a	S.pombe	13,390,637	0.52	11,000,448	687,632	251,345	32,021	0.45
2-22-221209L13_exp221207_MS96_SCGEuri_1.5hr-G1-arrest_10uM-EU-04min-chase_EU	2x150	STAR-2.5.3a	sacCer3	13,390,637	0.54	10,829,453	155,529	597,859	15,481	0.43
2-22-221209L14_exp221207_MS96_SCGEuri_1.5hr-G1-arrest_10uM-EU-10min-chase_EU	2x150	STAR-2.5.3a	S.pombe	12,060,618	0.53	12,223,301	771,403	279,523	37,085	0.55
2-22-221209L14_exp221207_MS96_SCGEuri_1.5hr-G1-arrest_10uM-EU-10min-chase_EU	2x150	STAR-2.5.3a	sacCer3	12,060,618	0.55	7,368,271	142,235	512,644	15,304	0.33
2-22-221209L15_exp221207_MS96_SCGEuri_1.5hr-G1-arrest_10uM-EU-16min-chase_EU	2x150	STAR-2.5.3a	S.pombe	10,873,115	0.53	12,650,515	775,993	297,114	39,474	0.63
2-22-221209L15_exp221207_MS96_SCGEuri_1.5hr-G1-arrest_10uM-EU-16min-chase_EU	2x150	STAR-2.5.3a	sacCer3	10,873,115	0.56	4,734,034	115,398	416,180	11,428	0.24
2-22-221209L16_exp221207_MS96_SCGEuri_1.5hr-G1-arrest_10uM-EU-28min-chase_EU	2x150	STAR-2.5.3a	S.pombe	13,013,704	0.49	18,304,986	1,136,248	428,557	60,599	0.77
2-22-221209L16_exp221207_MS96_SCGEuri_1.5hr-G1-arrest_10uM-EU-28min-chase_EU	2x150	STAR-2.5.3a	sacCer3	13,013,704	0.56	2,322,660	70,508	302,809	4,605	0.10
2-22-221209L17_exp221207_MS96_SCGEuri_1.5hr-G1-arrest_10uM-EU-40min-chase_EU	2x150	STAR-2.5.3a	S.pombe	11,876,167	0.50	17,952,307	1,090,927	428,120	61,210	0.82
2-22-221209L17_exp221207_MS96_SCGEuri_1.5hr-G1-arrest_10uM-EU-40min-chase_EU	2x150	STAR-2.5.3a	sacCer3	11,876,167	0.63	946,183	23,337	213,863	1,221	0.05
2022-12-22-221209L18_exp221207_MS96_SCGEuri_1.5hr-G1-arrest_00uM-EU_EU-enrich	2x150	STAR-2.5.3a	S.pombe	11,493,734	0.50	18,179,047	1,087,667	443,803	57,135	0.86
2022-12-22-221209L18_exp221207_MS96_SCGEuri_1.5hr-G1-arrest_00uM-EU_EU-enrich	2x150	STAR-2.5.3a	sacCer3	11,493,734	0.69	384,761	8,005	176,763	949	0.02
12-22-221209L19_exp221207_MS96_SCGEuri_7hr-G1-arrest_10uM-EU-04min-chase_EU	2x150	STAR-2.5.3a	S.pombe	10,233,120	0.57	7,180,057	427,343	195,330	20,574	0.38
12-22-221209L19_exp221207_MS96_SCGEuri_7hr-G1-arrest_10uM-EU-04min-chase_EU	2x150	STAR-2.5.3a	sacCer3	10,233,120	0.57	9,333,001	122,137	649,480	21,670	0.49
12-22-221209L20_exp221207_MS96_SCGEuri_7hr-G1-arrest_10uM-EU-10min-chase_EU	2x150	STAR-2.5.3a	S.pombe	12,053,802	0.54	9,034,776	544,810	205,380	24,192	0.41
12-22-221209L20_exp221207_MS96_SCGEuri_7hr-G1-arrest_10uM-EU-10min-chase_EU	2x150	STAR-2.5.3a	sacCer3	12,053,802	0.53	10,404,208	153,170	758,302	29,228	0.47
12-22-221209L21_exp221207_MS96_SCGEuri_7hr-G1-arrest_10uM-EU-16min-chase_EU	2x150	STAR-2.5.3a	S.pombe	12,061,821	0.53	10,986,379	666,855	261,771	31,257	0.50
12-22-221209L21_exp221207_MS96_SCGEuri_7hr-G1-arrest_10uM-EU-16min-chase_EU	2x150	STAR-2.5.3a	sacCer3	12,061,821	0.52	8,864,752	156,676	672,237	25,055	0.40
12-22-221209L22_exp221207_MS96_SCGEuri_7hr-G1-arrest_10uM-EU-28min-chase_EU	2x150	STAR-2.5.3a	S.pombe	13,132,065	0.50	15,316,944	908,488	365,051	44,049	0.63
12-22-221209L22_exp221207_MS96_SCGEuri_7hr-G1-arrest_10uM-EU-28min-chase_EU	2x150	STAR-2.5.3a	sacCer3	13,132,065	0.49	6,251,726	141,572	658,070	19,672	0.27
12-22-221209L23_exp221207_MS96_SCGEuri_7hr-G1-arrest_10uM-EU-40min-chase_EU	2x150	STAR-2.5.3a	S.pombe	11,635,153	0.51	15,452,598	937,746	351,128	50,654	0.72
12-22-221209L23_exp221207_MS96_SCGEuri_7hr-G1-arrest_10uM-EU-40min-chase_EU	2x150	STAR-2.5.3a	sacCer3	11,635,153	0.52	3,416,533	89,443	426,609	12,461	0.17
2022-12-22-221209L24_exp221207_MS96_SCGEuri_7hr-G1-arrest_00uM-EU_EU-enrich	2x150	STAR-2.5.3a	S.pombe	10,416,521	0.52	16,292,142	1,003,756	365,557	50,895	0.85
2022-12-22-221209L24_exp221207_MS96_SCGEuri_7hr-G1-arrest_00uM-EU_EU-enrich	2x150	STAR-2.5.3a	sacCer3	10,416,521	0.70	326,130	6,842	135,813	525	0.02

COVERAGE

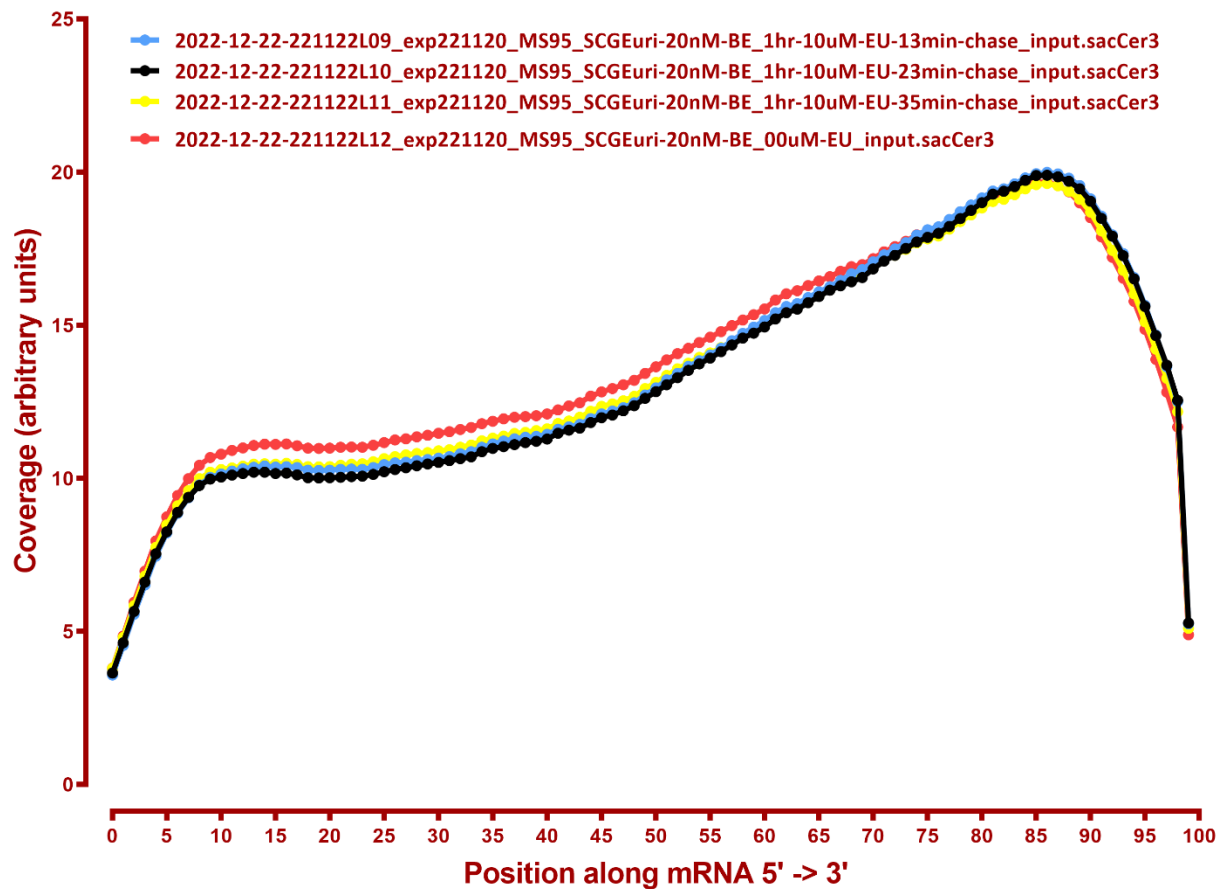
Coverage of genes; >1000bp, sacCer3



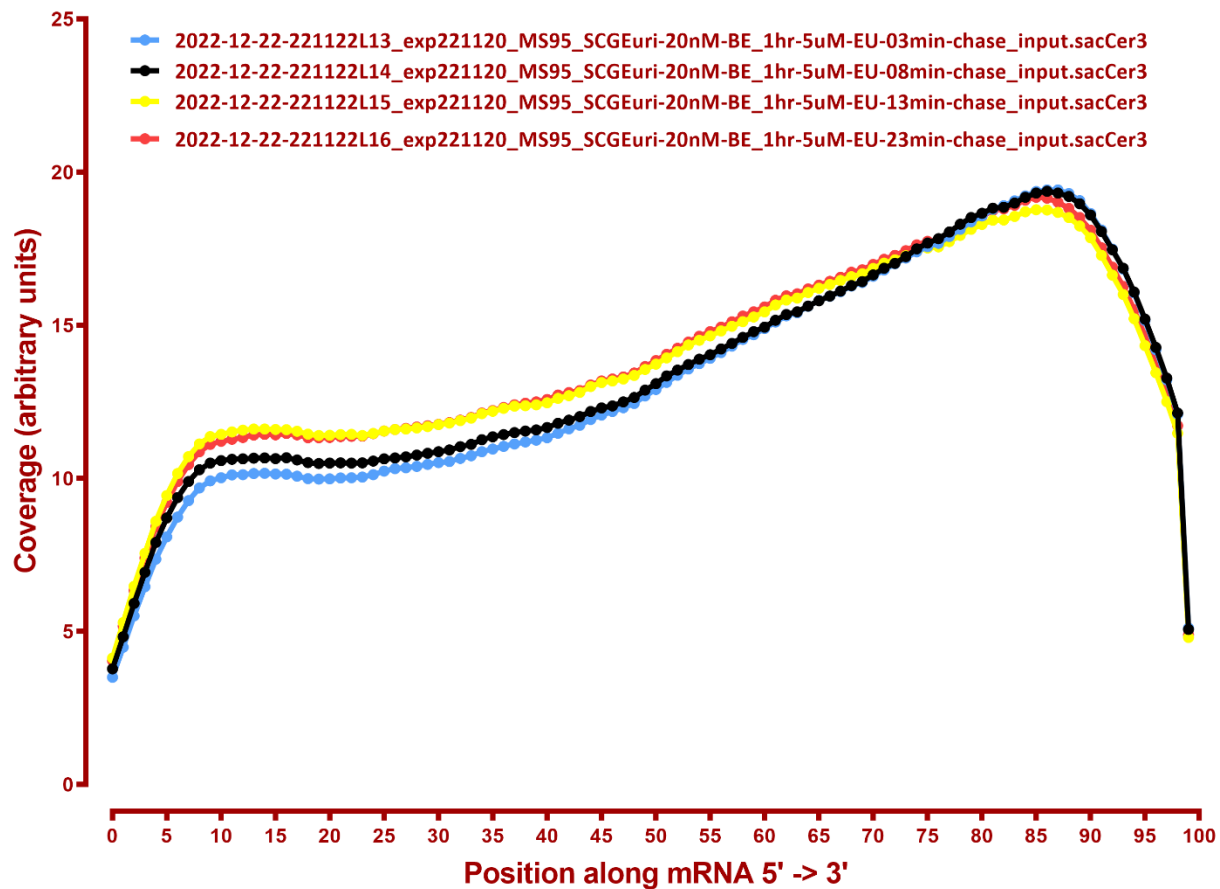
Coverage of genes; >1000bp, sacCer3



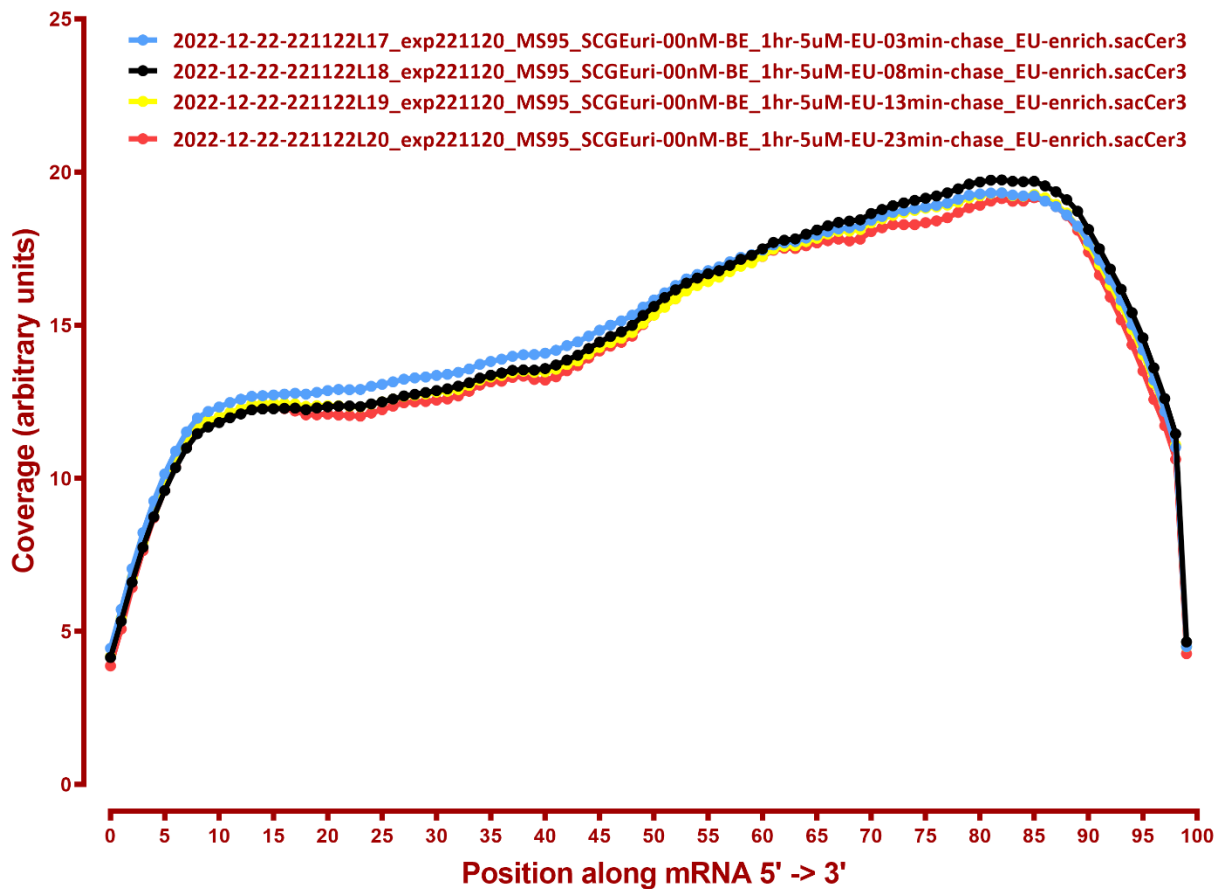
Coverage of genes; >1000bp, sacCer3



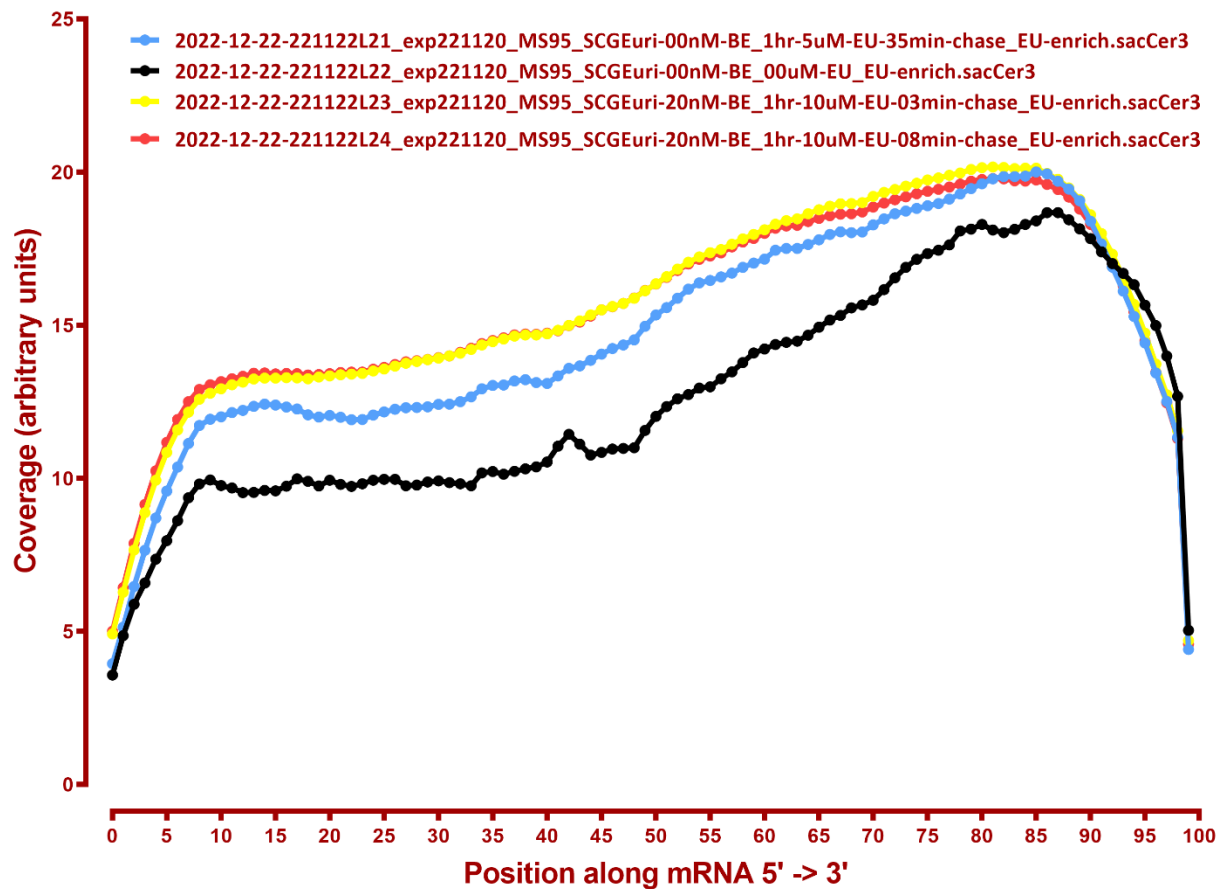
Coverage of genes; >1000bp, sacCer3



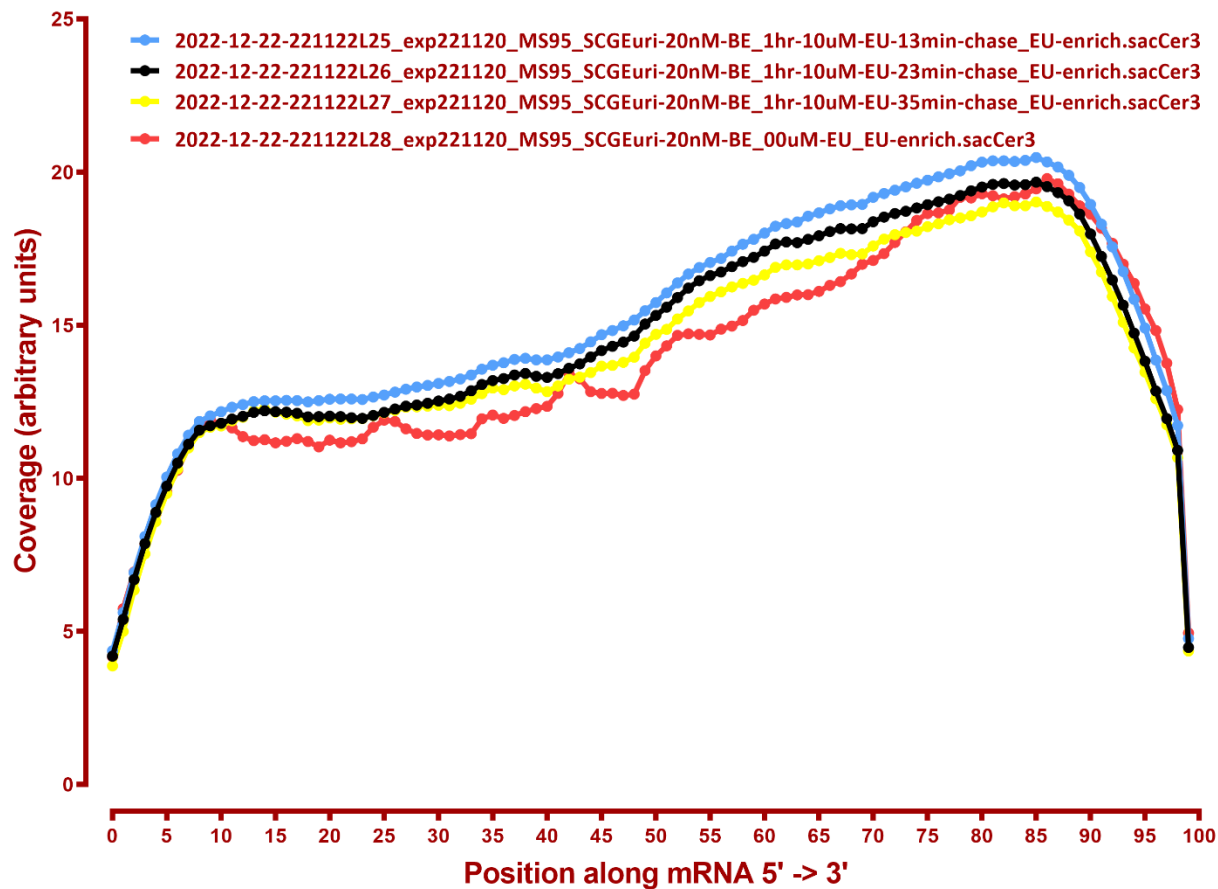
Coverage of genes; >1000bp, sacCer3



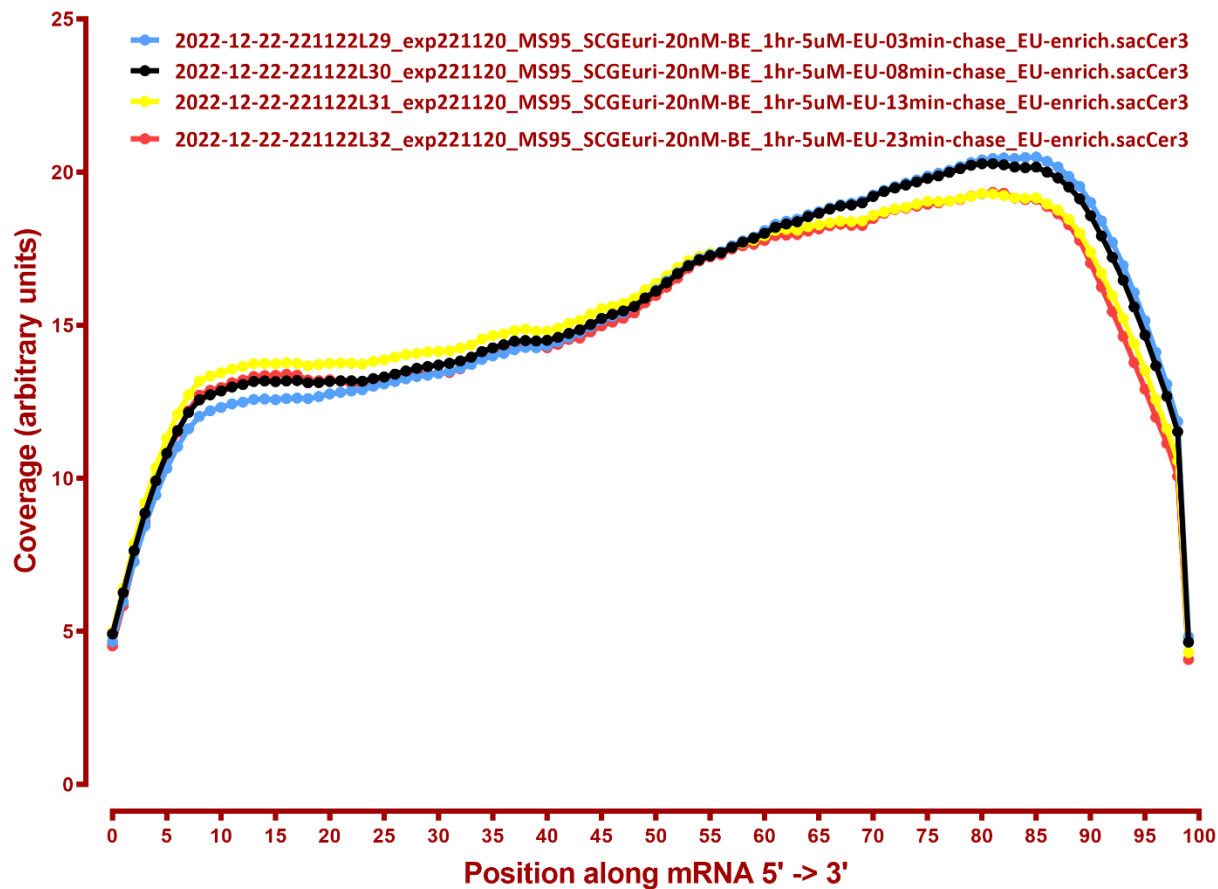
Coverage of genes; >1000bp, sacCer3



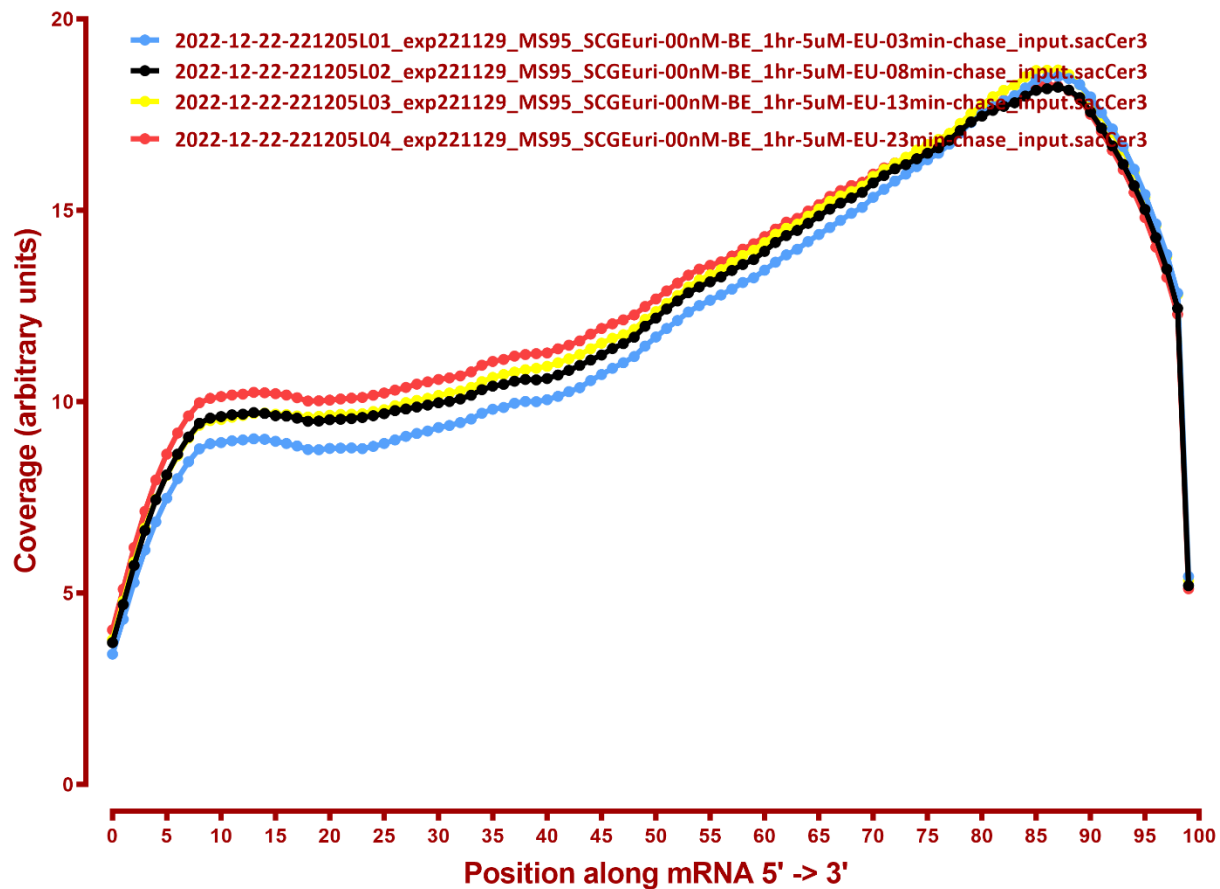
Coverage of genes; >1000bp, sacCer3



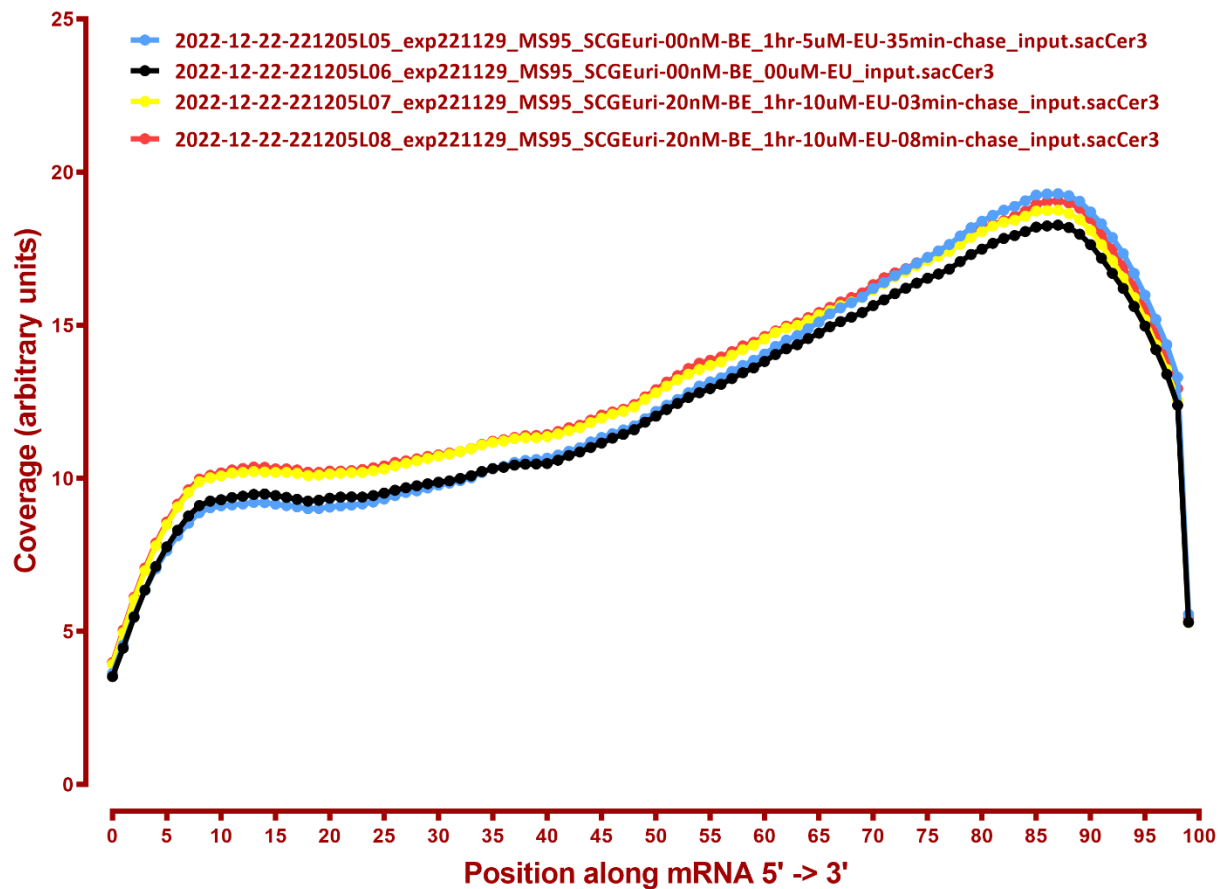
Coverage of genes; >1000bp, sacCer3



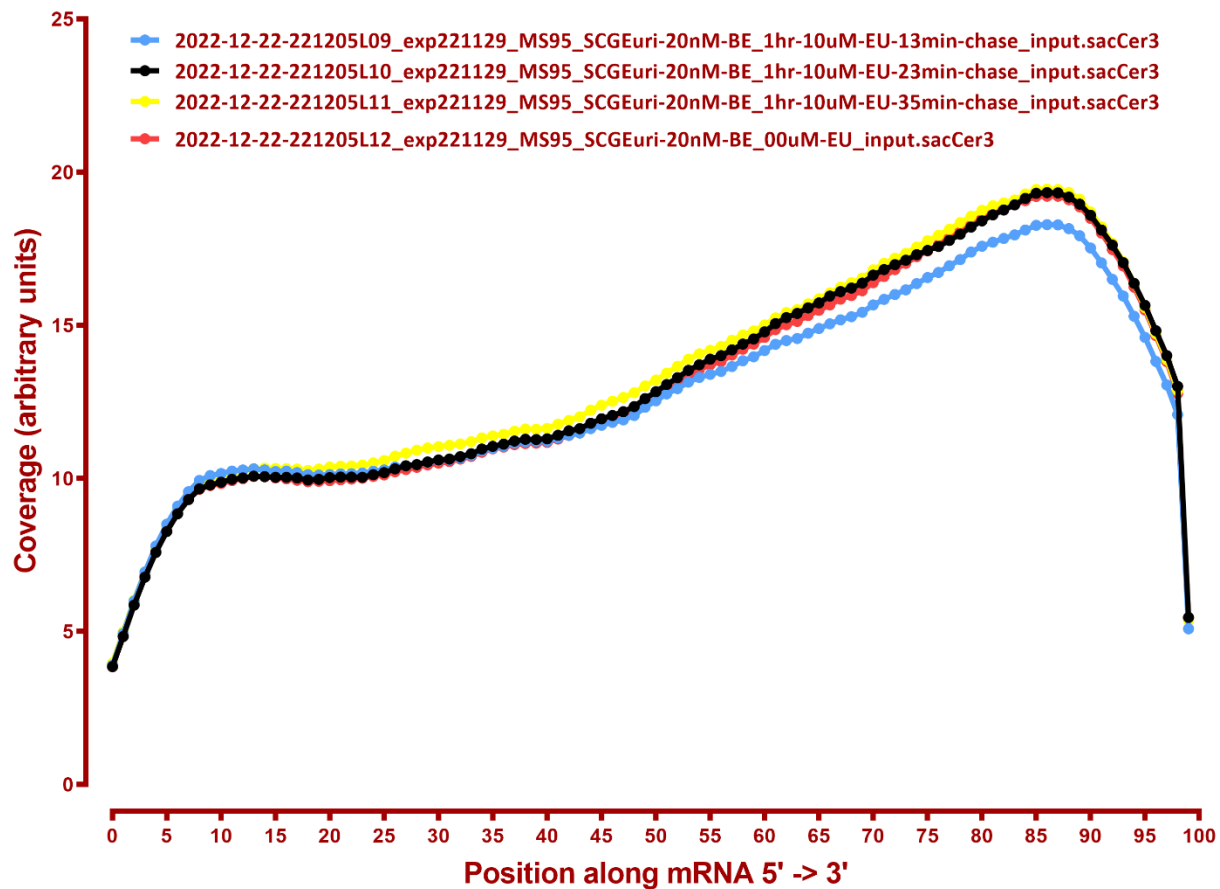
Coverage of genes; >1000bp, sacCer3



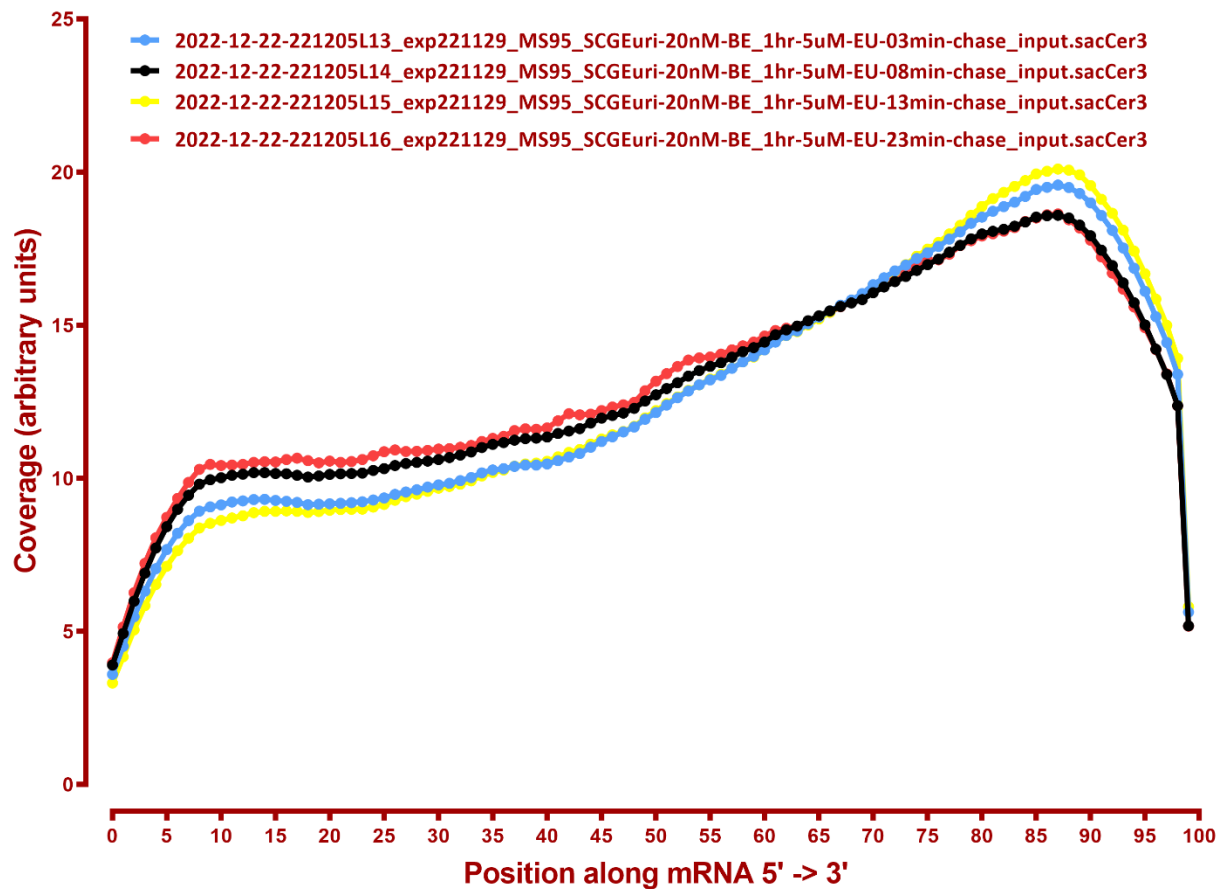
Coverage of genes; >1000bp, sacCer3



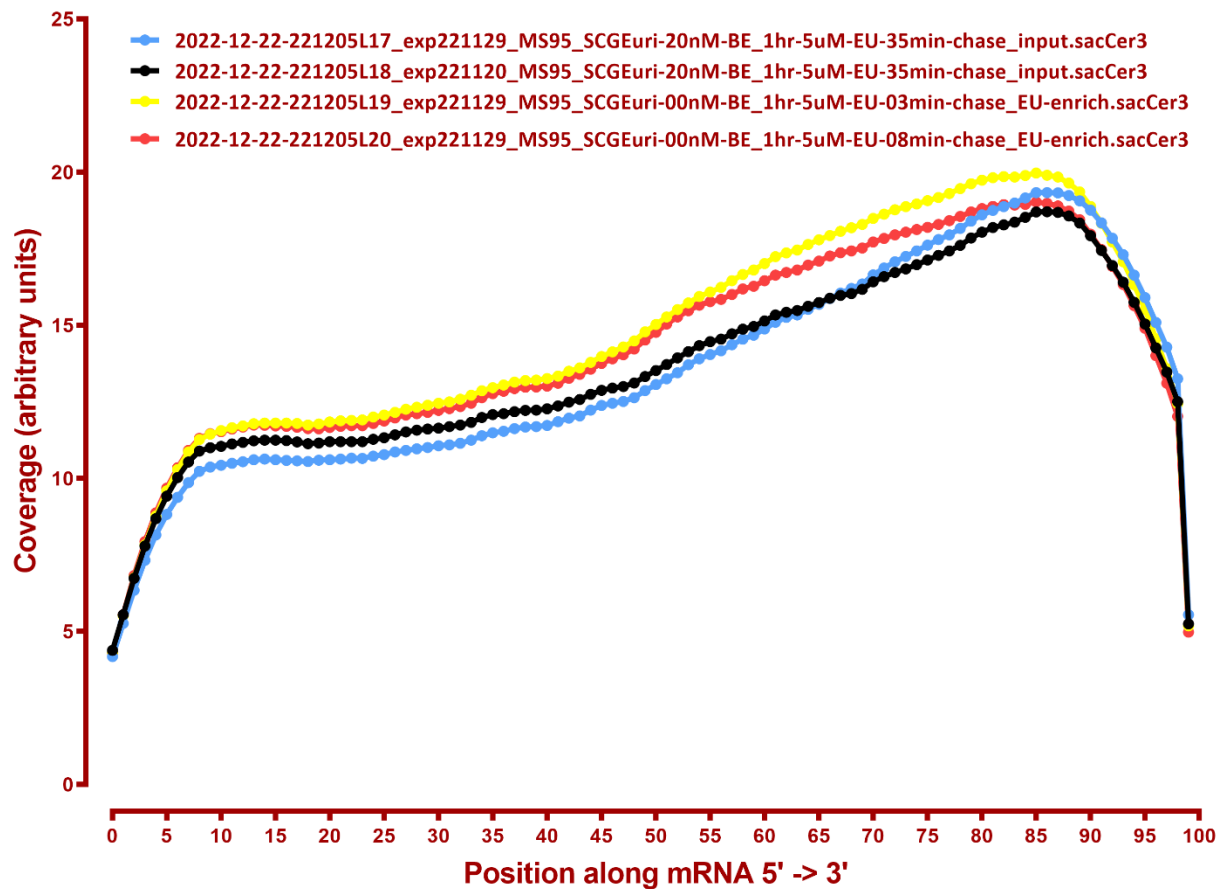
Coverage of genes; >1000bp, sacCer3



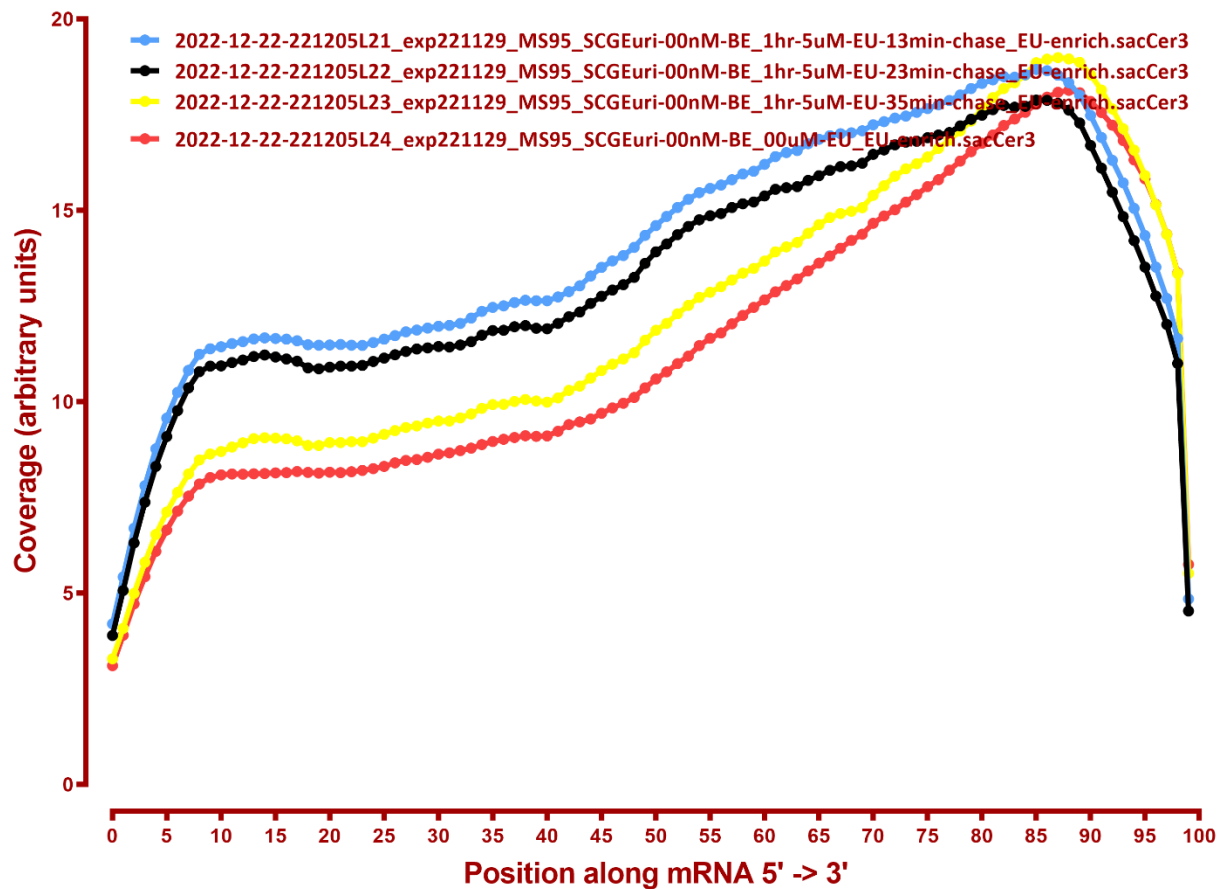
Coverage of genes; >1000bp, sacCer3



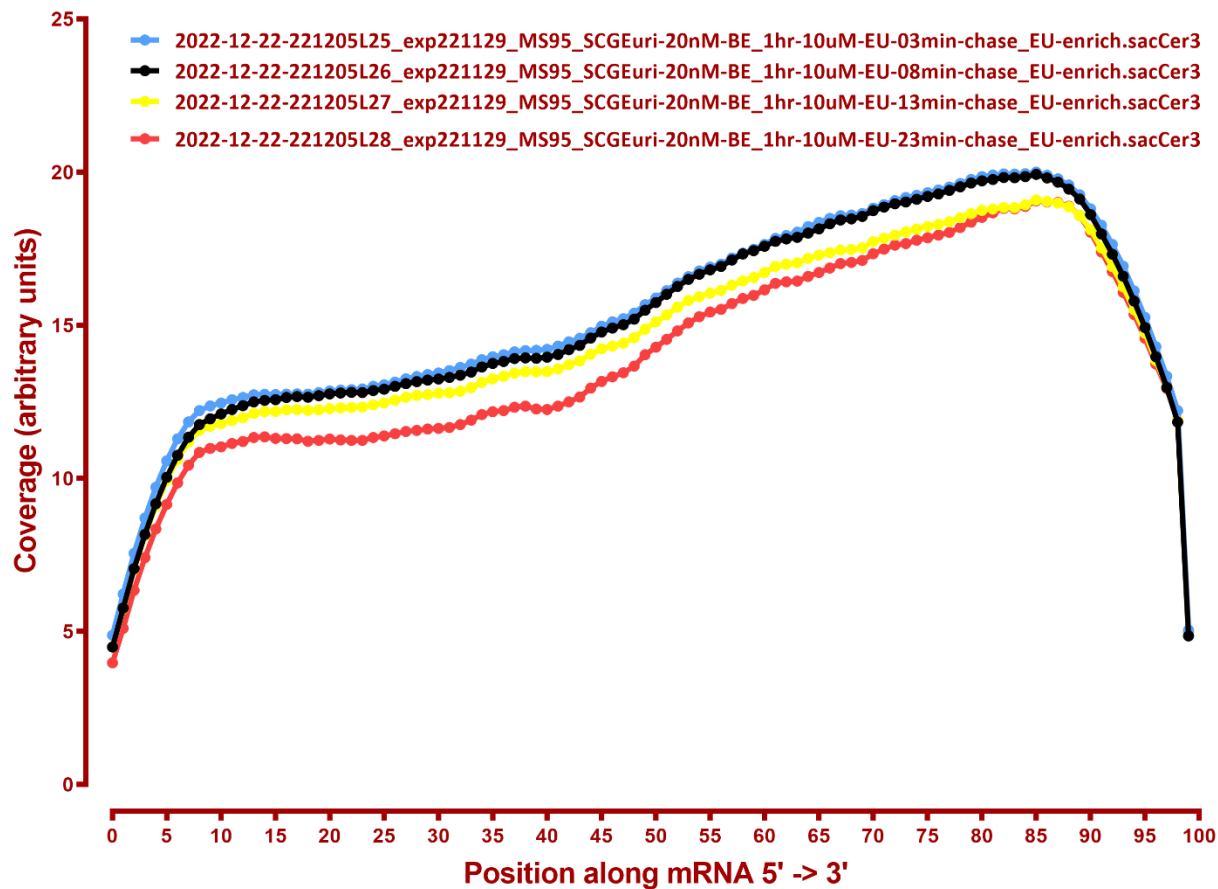
Coverage of genes; >1000bp, sacCer3



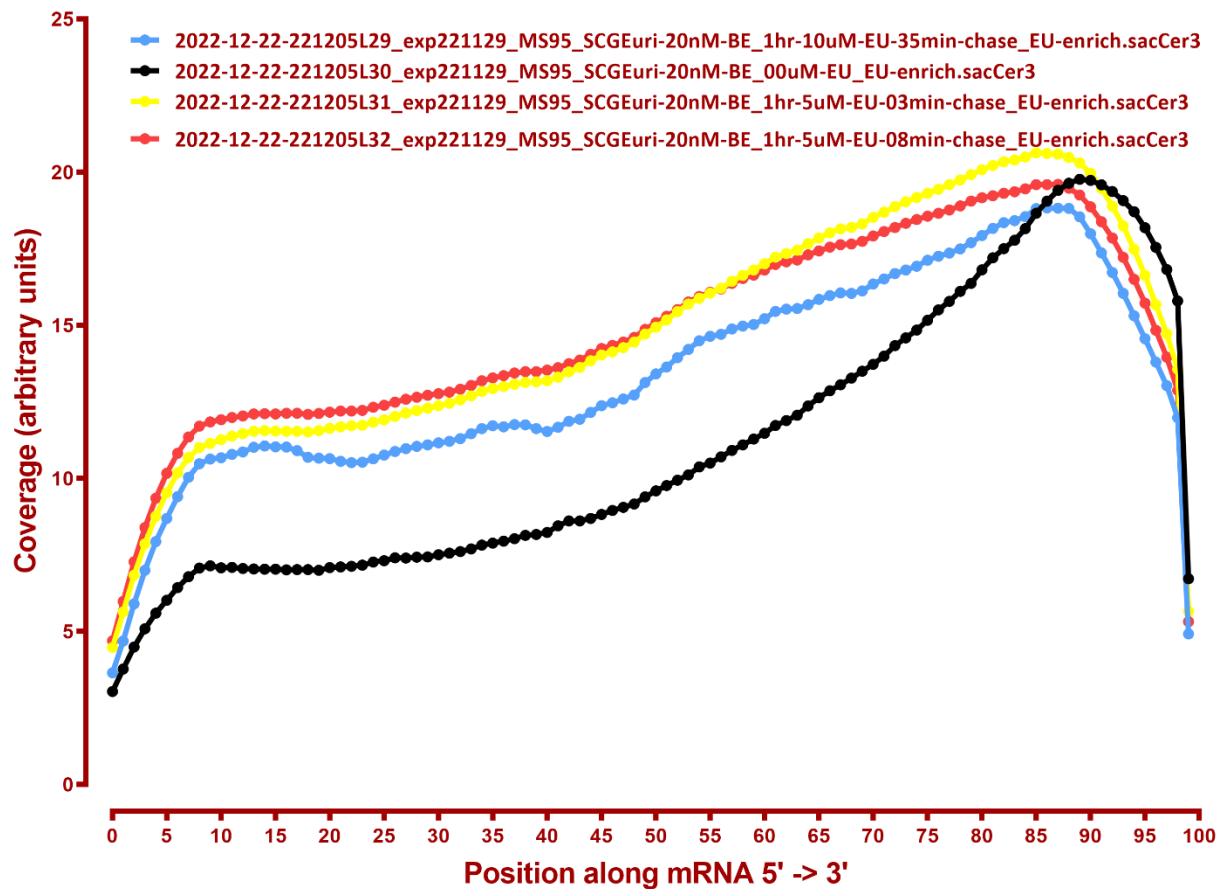
Coverage of genes; >1000bp, sacCer3



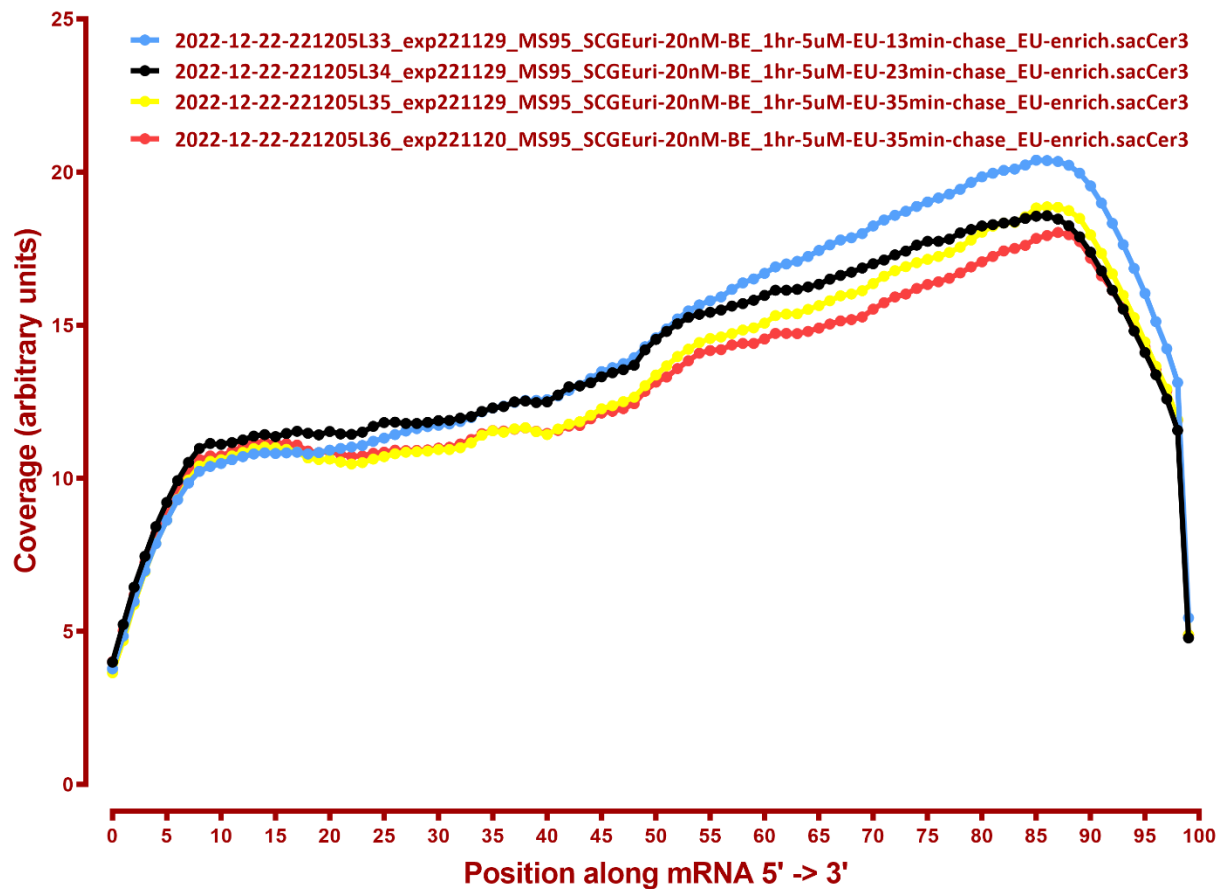
Coverage of genes; >1000bp, sacCer3



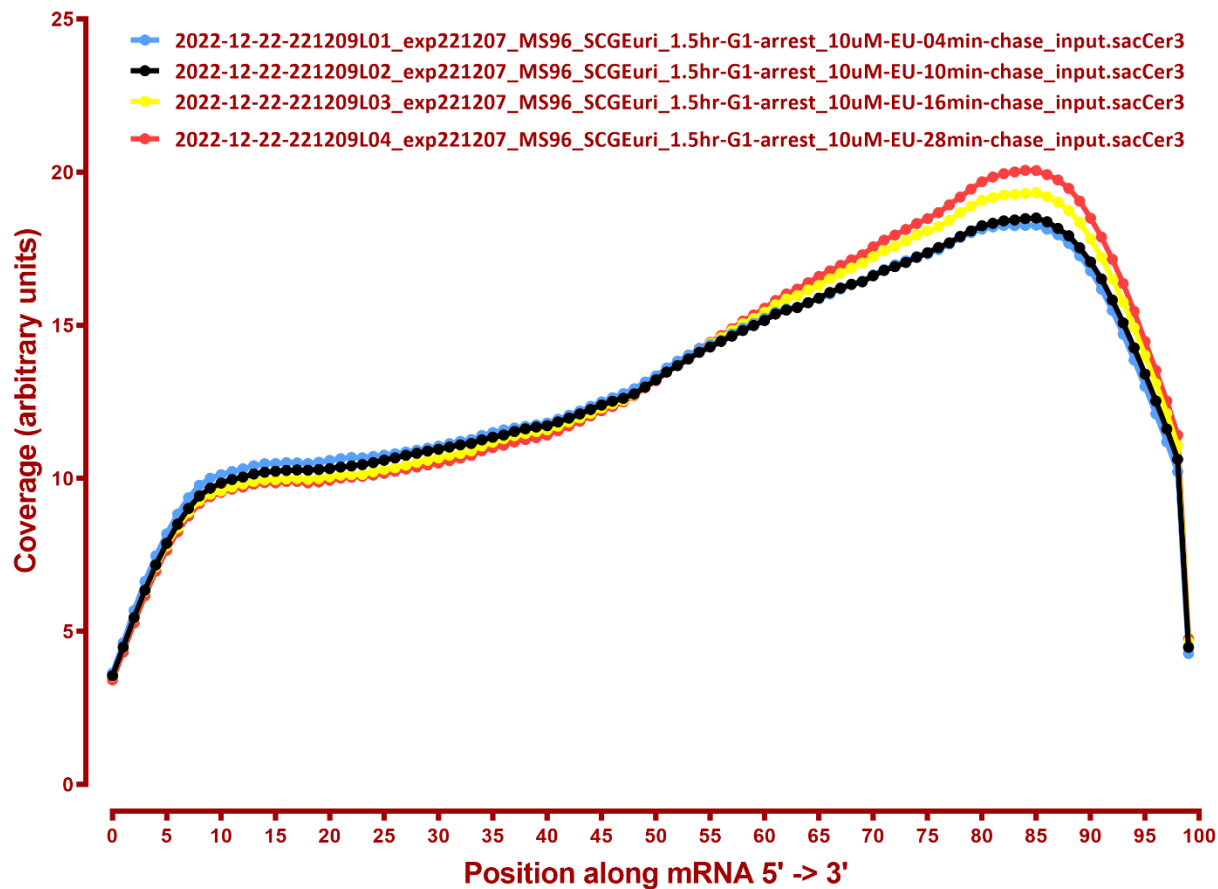
Coverage of genes; >1000bp, sacCer3



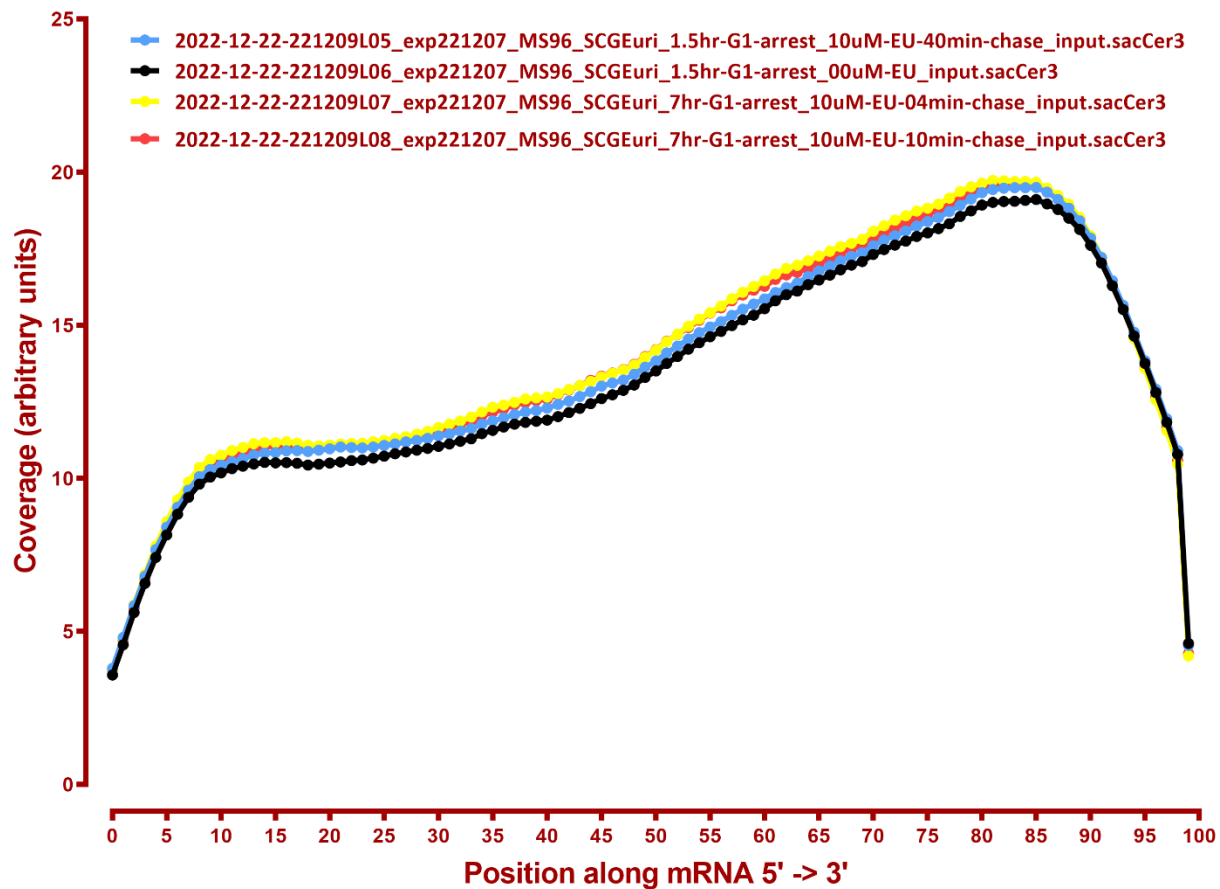
Coverage of genes; >1000bp, sacCer3



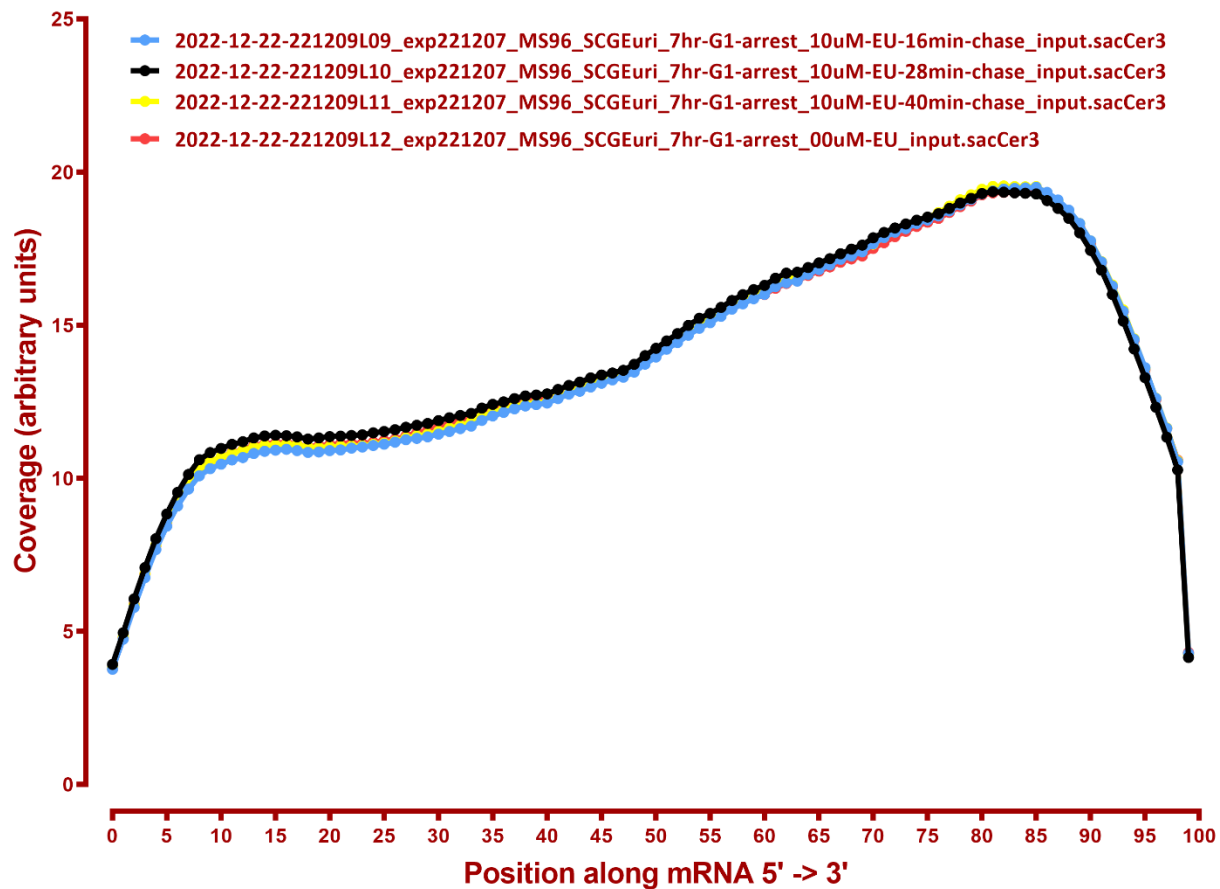
Coverage of genes; >1000bp, sacCer3



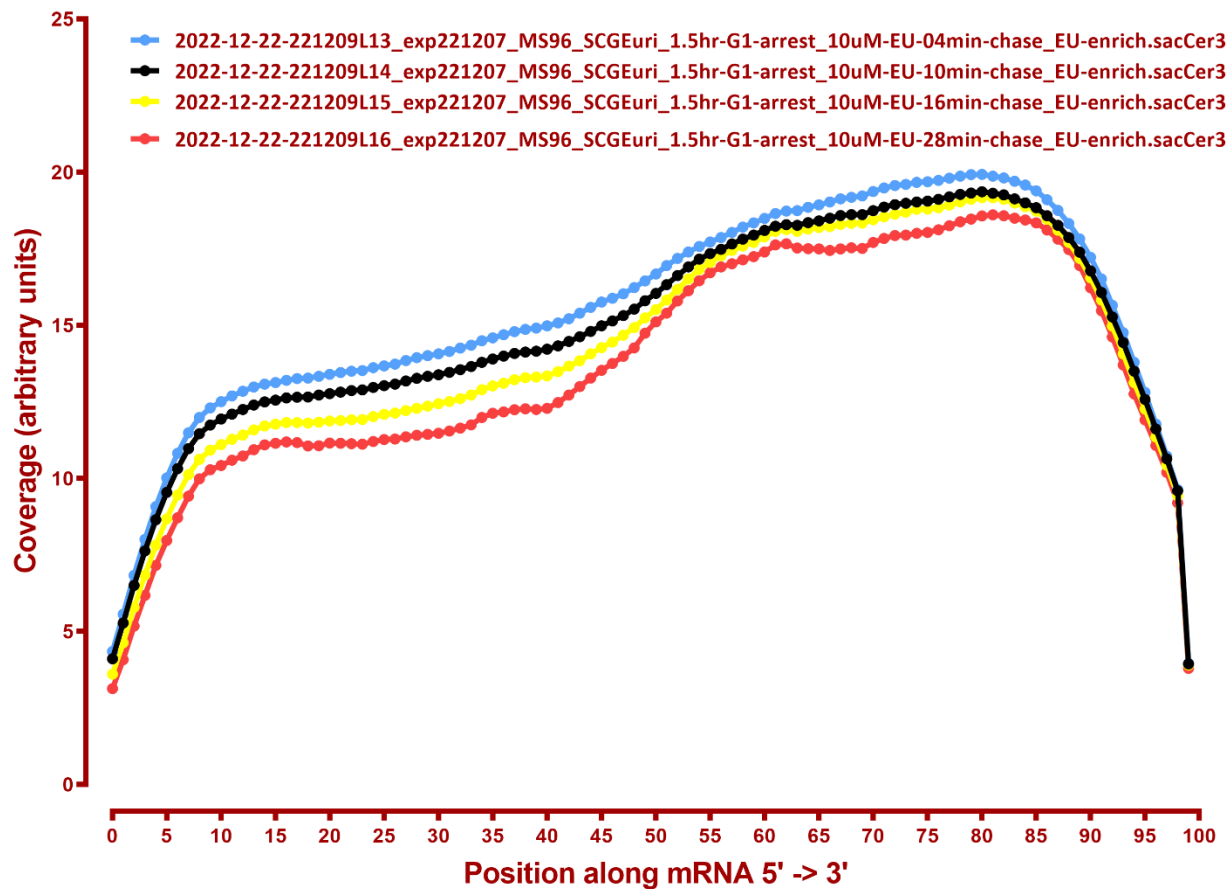
Coverage of genes; >1000bp, sacCer3



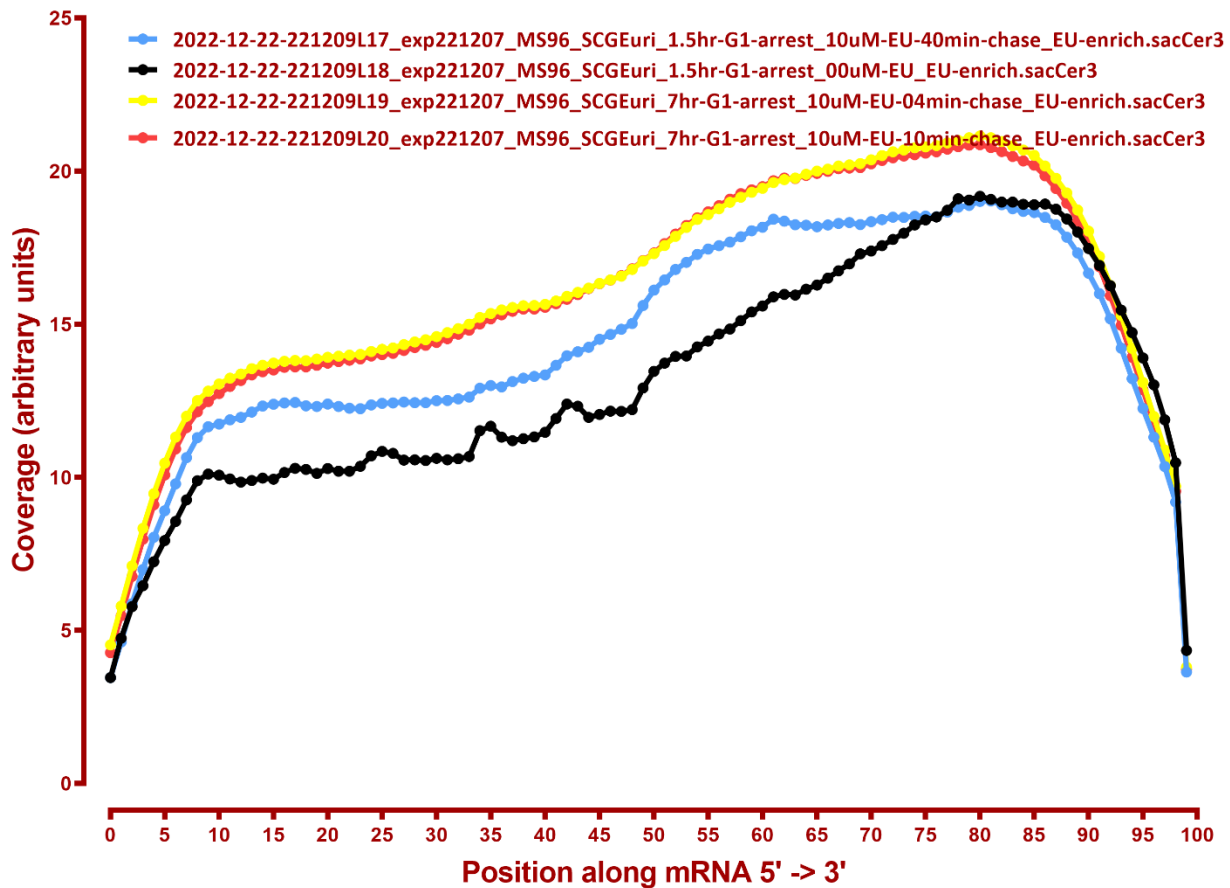
Coverage of genes; >1000bp, sacCer3



Coverage of genes; >1000bp, sacCer3



Coverage of genes; >1000bp, sacCer3



Coverage of genes; >1000bp, sacCer3

