

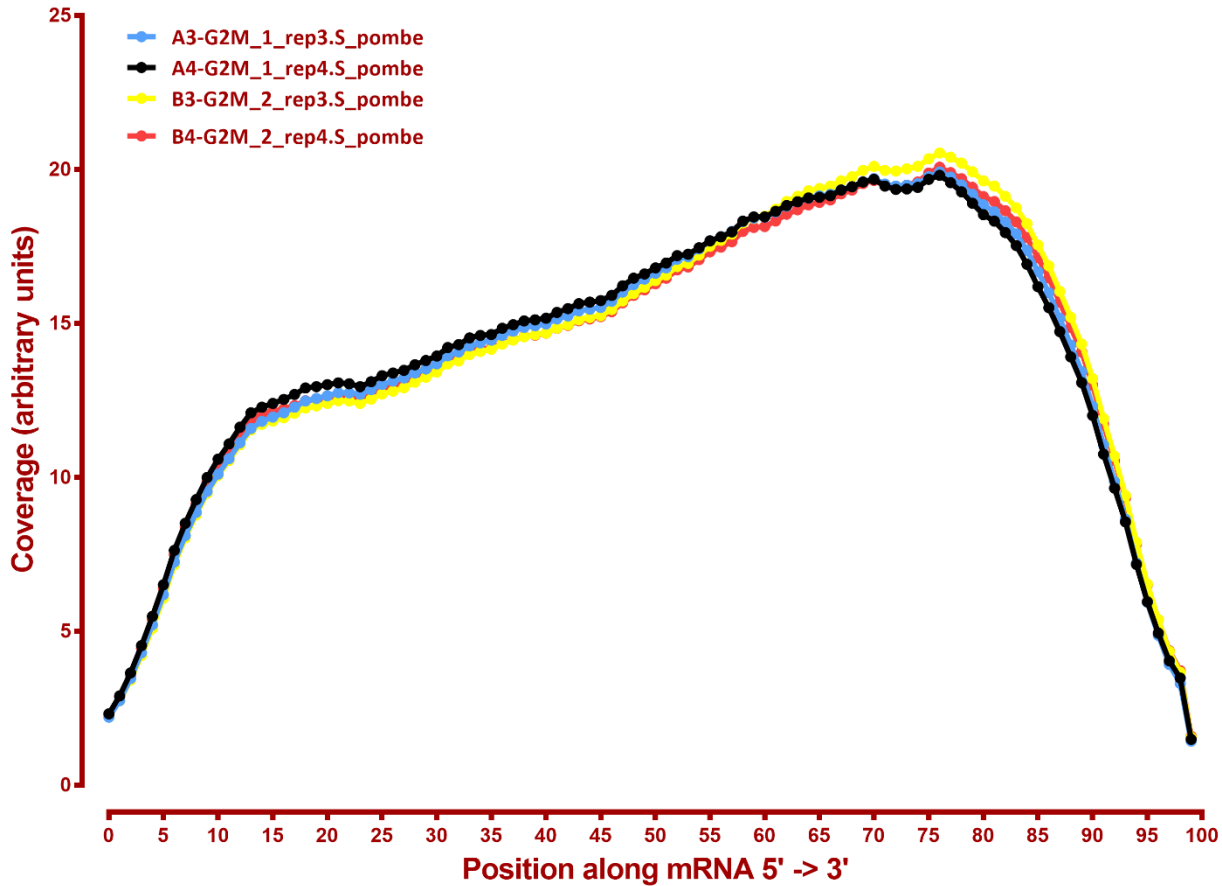
MAPPING STATS

Library	Read Length	Mapping	Species	Raw fragments	Complexity	Unique	Unique Splices	Multi	Multi Splices	Fraction mapped
A3-G2M_1_rep3	2x150	STAR-2.5.3a	S_pombe	20,645,522	0.39	18,294,361	1,400,891	687,712	62,208	0.50
A3-G2M_1_rep3	2x150	STAR-2.5.3a	sacCer3	20,645,522	0.37	17,837,669	445,645	1,312,408	36,108	0.48
A4-G2M_1_rep4	2x150	STAR-2.5.3a	S_pombe	23,997,134	0.36	28,786,499	2,191,879	868,904	121,016	0.67
A4-G2M_1_rep4	2x150	STAR-2.5.3a	sacCer3	23,997,134	0.39	13,448,727	332,285	803,642	24,704	0.30
B3-G2M_2_rep3	2x150	STAR-2.5.3a	S_pombe	23,178,118	0.38	21,251,024	1,599,314	637,663	81,937	0.51
B3-G2M_2_rep3	2x150	STAR-2.5.3a	sacCer3	23,178,118	0.37	19,521,932	476,820	1,185,524	39,502	0.46
B4-G2M_2_rep4	2x150	STAR-2.5.3a	S_pombe	25,616,710	0.37	25,179,892	1,990,418	1,132,011	104,183	0.55
B4-G2M_2_rep4	2x150	STAR-2.5.3a	sacCer3	25,616,710	0.37	18,866,978	478,722	1,512,259	38,049	0.41
C3-G2M_3_rep3	2x150	STAR-2.5.3a	S_pombe	20,985,562	0.41	16,183,734	1,276,704	582,672	53,400	0.43
C3-G2M_3_rep3	2x150	STAR-2.5.3a	sacCer3	20,985,562	0.38	20,236,001	504,279	1,469,083	37,003	0.53
C4-G2M_3_rep4	2x150	STAR-2.5.3a	S_pombe	20,505,903	0.39	18,736,090	1,494,362	619,400	70,028	0.51
C4-G2M_3_rep4	2x150	STAR-2.5.3a	sacCer3	20,505,903	0.38	17,183,709	436,745	1,171,704	28,536	0.46
D3-G2M_4_rep3	2x150	STAR-2.5.3a	S_pombe	24,494,003	0.39	16,109,676	1,253,840	574,940	59,322	0.37
D3-G2M_4_rep3	2x150	STAR-2.5.3a	sacCer3	24,494,003	0.36	26,031,540	610,526	2,106,464	51,836	0.59
D4-G2M_4_rep4	2x150	STAR-2.5.3a	S_pombe	19,666,415	0.37	18,344,599	1,531,463	605,727	75,597	0.52
D4-G2M_4_rep4	2x150	STAR-2.5.3a	sacCer3	19,666,415	0.35	15,884,050	425,788	1,081,076	31,262	0.44
E3-input_rep3	2x150	STAR-2.5.3a	S_pombe	20,650,841	0.45	9,822,901	779,481	299,996	30,274	0.26
E3-input_rep3	2x150	STAR-2.5.3a	sacCer3	20,650,841	0.37	26,426,754	668,470	1,661,261	51,051	0.70
E4-input_rep4	2x150	STAR-2.5.3a	S_pombe	19,972,687	0.75	73	9	81	1	0.00
E4-input_rep4	2x150	STAR-2.5.3a	sacCer3	19,972,687	0.35	35,335,012	934,818	2,002,649	78,387	0.96
F3-unstained_input_rep3	2x150	STAR-2.5.3a	S_pombe	21,576,320	0.40	12,204,541	946,213	228,915	43,529	0.31
F3-unstained_input_rep3	2x150	STAR-2.5.3a	sacCer3	21,576,320	0.34	26,059,578	705,002	1,366,491	58,541	0.65
F4-unstained_input_rep4	2x150	STAR-2.5.3a	S_pombe	19,679,198	0.54	1,499	139	144	0	0.00
F4-unstained_input_rep4	2x150	STAR-2.5.3a	sacCer3	19,679,198	0.31	34,720,986	898,718	1,944,200	80,382	0.96

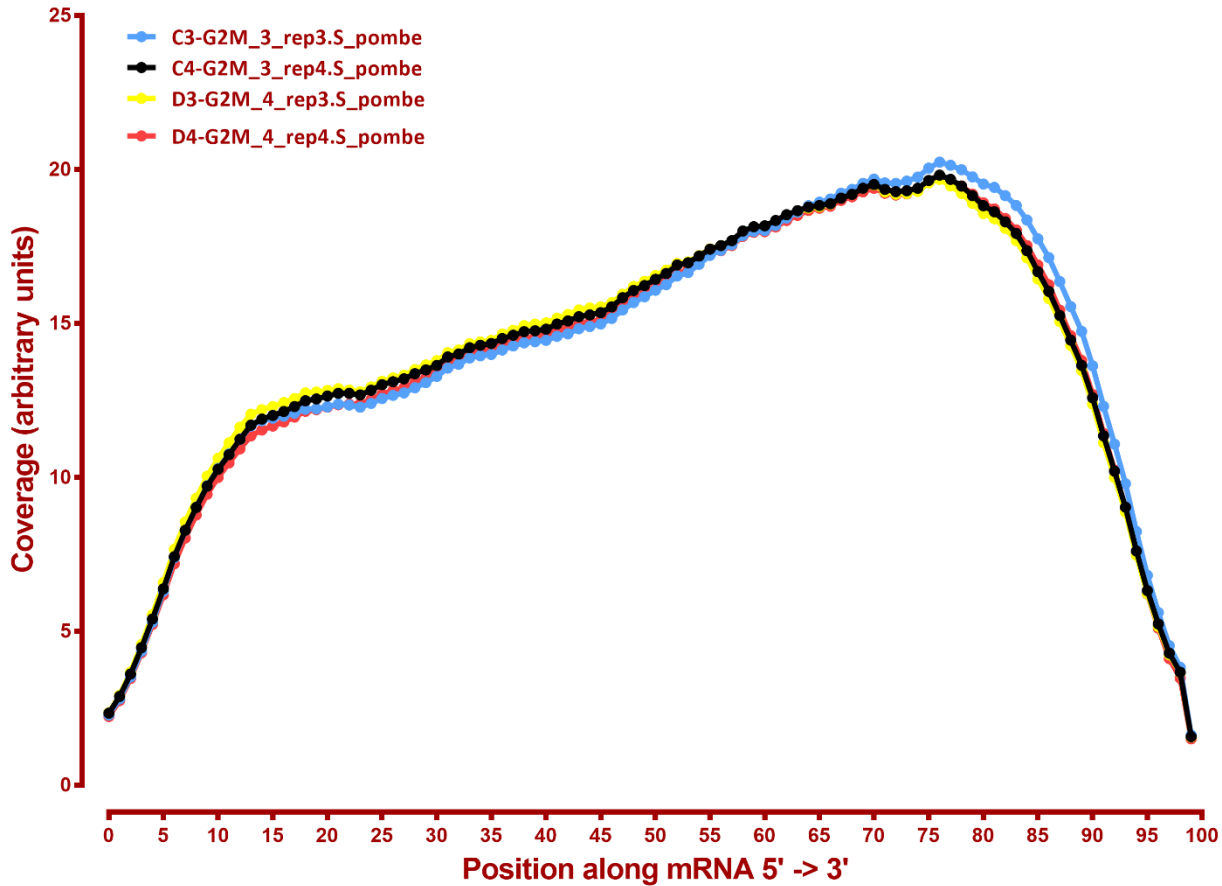
READ DISTRIBUTION

#	Exonic:	Intergenic:	Intronic:
2019-10-25-A3-G2M_1_rep3.S_pombe	0.98	0.01	0.01
2019-10-25-A3-G2M_1_rep3.sacCer3	0.92	0.08	0.00
2019-10-25-A4-G2M_1_rep4.S_pombe	0.98	0.01	0.01
2019-10-25-A4-G2M_1_rep4.sacCer3	0.92	0.08	0.00
2019-10-25-B3-G2M_2_rep3.S_pombe	0.98	0.01	0.01
2019-10-25-B3-G2M_2_rep3.sacCer3	0.92	0.08	0.00
2019-10-25-B4-G2M_2_rep4.S_pombe	0.98	0.01	0.01
2019-10-25-B4-G2M_2_rep4.sacCer3	0.91	0.08	0.00
2019-10-25-C3-G2M_3_rep3.S_pombe	0.98	0.01	0.01
2019-10-25-C3-G2M_3_rep3.sacCer3	0.91	0.09	0.00
2019-10-25-C4-G2M_3_rep4.S_pombe	0.98	0.01	0.01
2019-10-25-C4-G2M_3_rep4.sacCer3	0.91	0.08	0.00
2019-10-25-D3-G2M_4_rep3.S_pombe	0.98	0.01	0.01
2019-10-25-D3-G2M_4_rep3.sacCer3	0.91	0.08	0.00
2019-10-25-D4-G2M_4_rep4.S_pombe	0.98	0.01	0.01
2019-10-25-D4-G2M_4_rep4.sacCer3	0.92	0.08	0.00
2019-10-25-E3-input_rep3.S_pombe	0.98	0.01	0.01
2019-10-25-E3-input_rep3.sacCer3	0.92	0.08	0.00
2019-10-25-E4-input_rep4.S_pombe	1.00	0.00	0.00
2019-10-25-E4-input_rep4.sacCer3	0.91	0.08	0.00
2019-10-25-F3-unstained_input_rep3.S_pombe	0.98	0.02	0.01
2019-10-25-F3-unstained_input_rep3.sacCer3	0.91	0.09	0.00
2019-10-25-F4-unstained_input_rep4.S_pombe	0.99	0.00	0.00
2019-10-25-F4-unstained_input_rep4.sacCer3	0.91	0.08	0.00

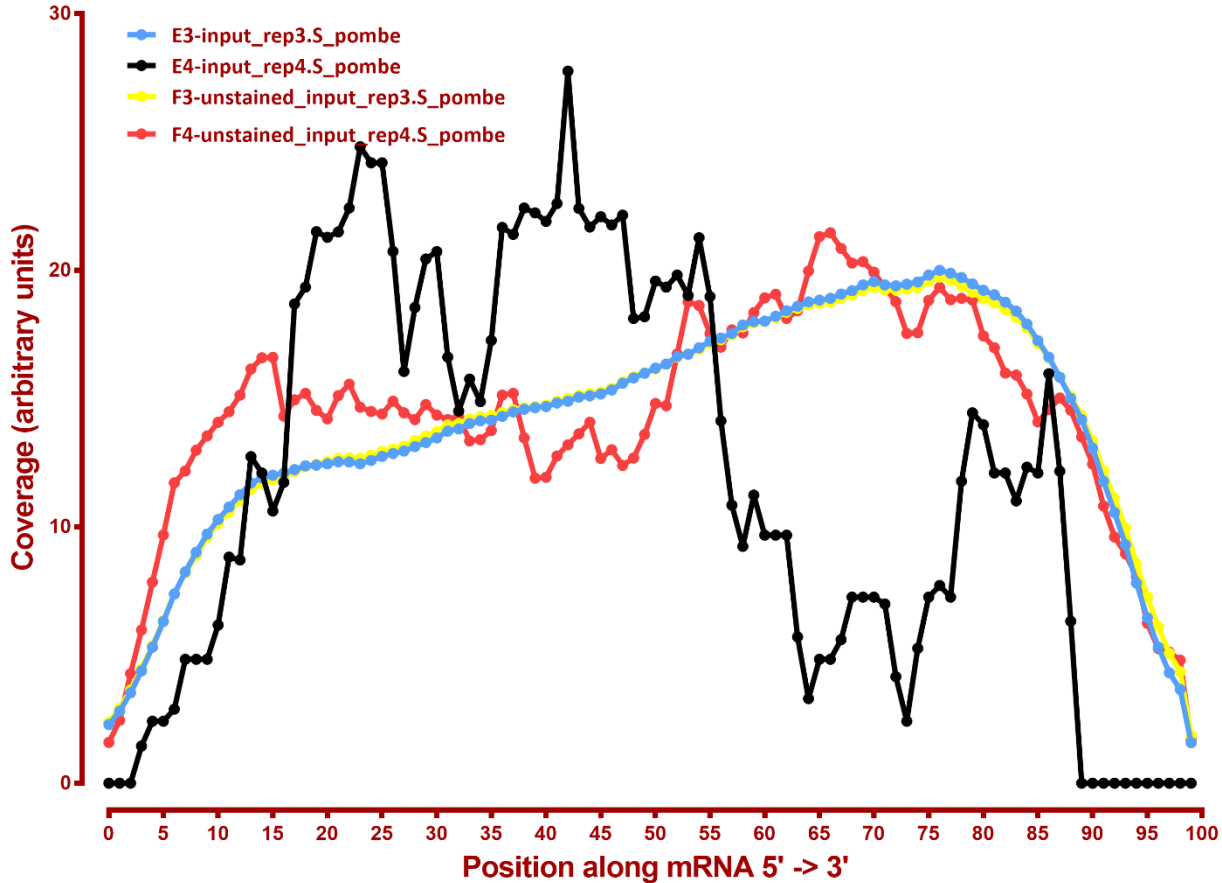
Coverage of genes; >1000bp, *S.pombe*



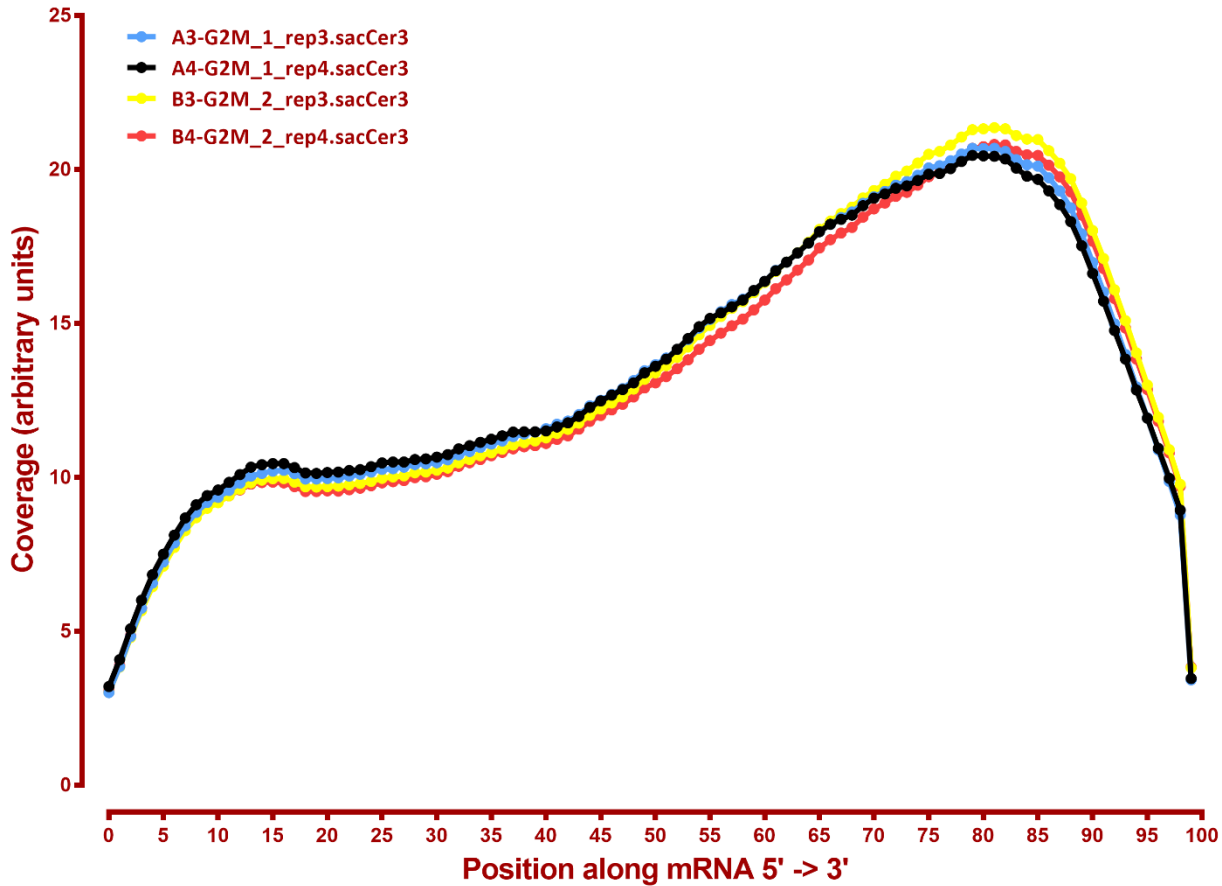
Coverage of genes; >1000bp, *S.pombe*



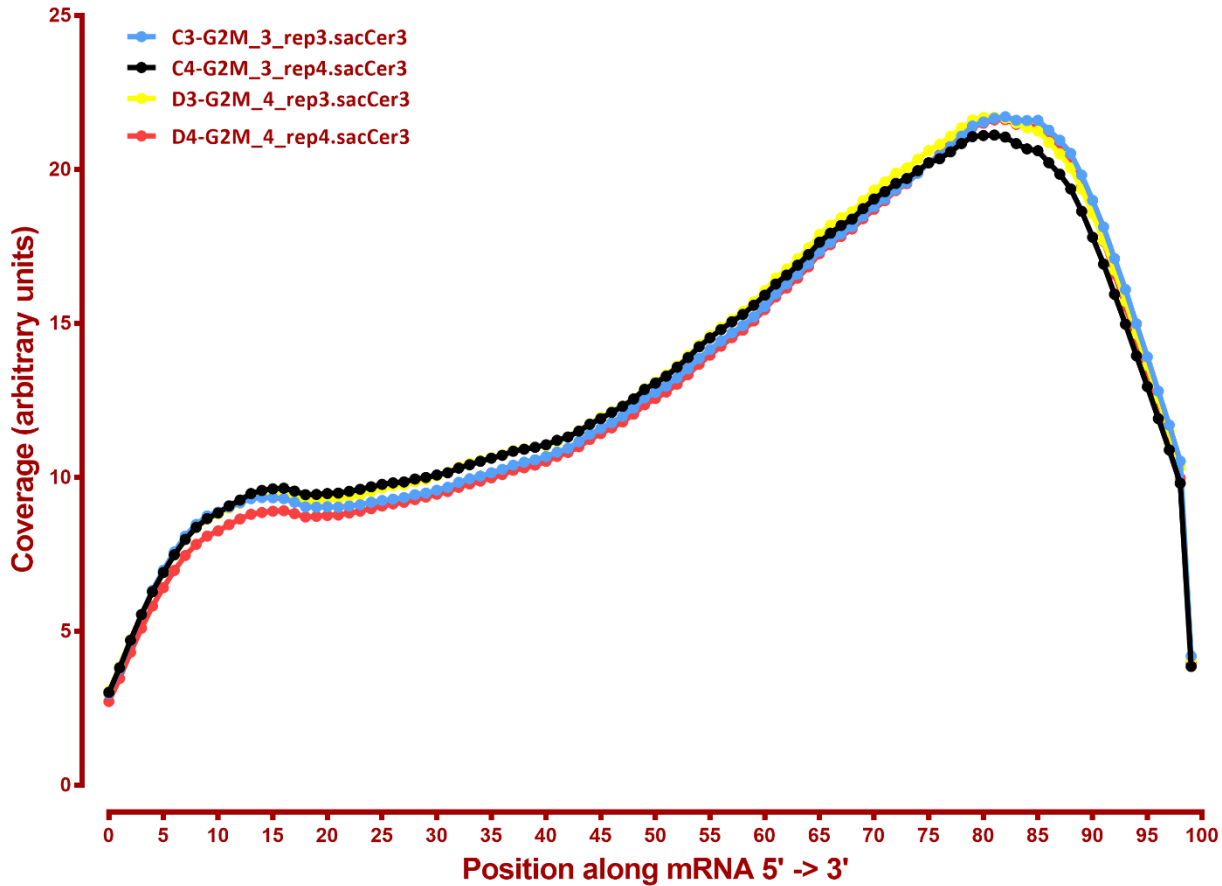
Coverage of genes; >1000bp, *S.pombe*



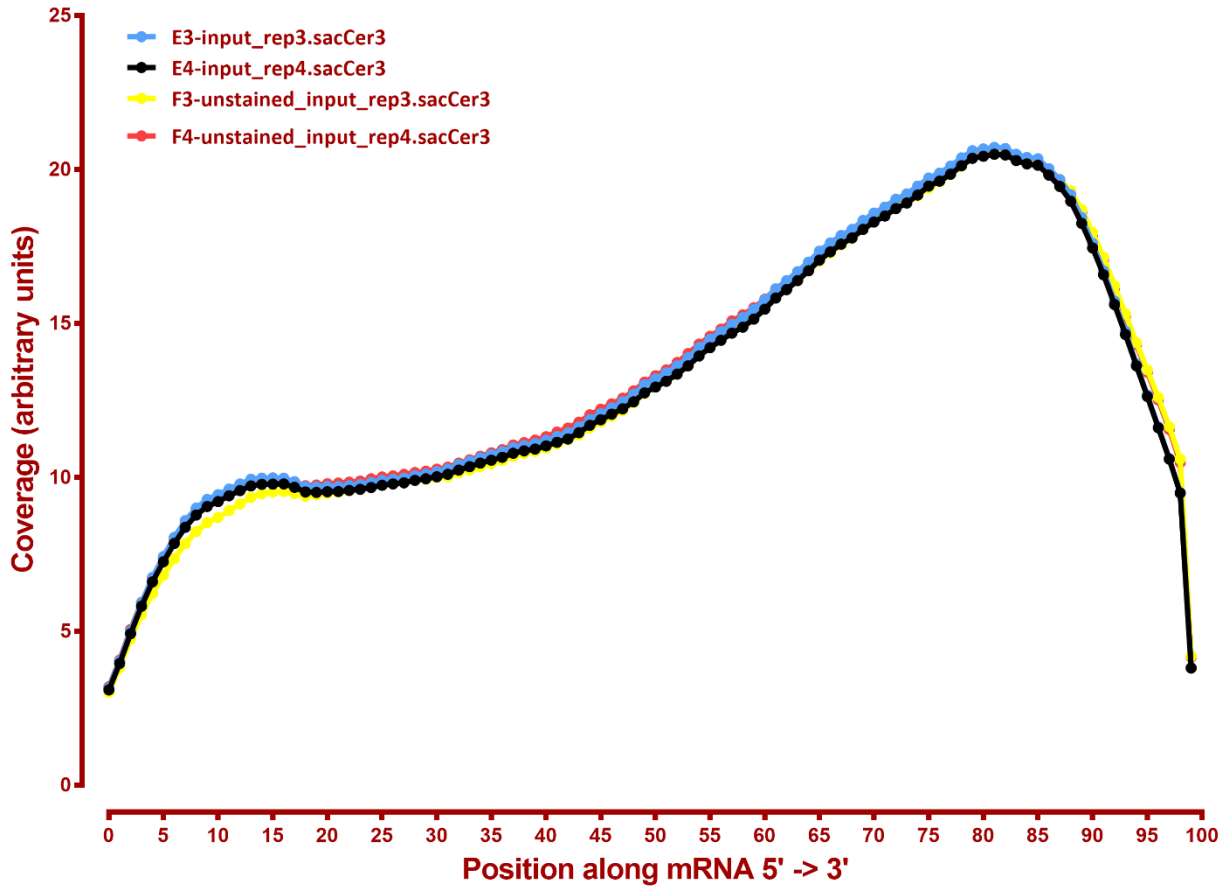
Coverage of genes; >1000bp, sacCer3



Coverage of genes; >1000bp, sacCer3



Coverage of genes; >1000bp, sacCer3



Number differential genes, sacCer3

A	B	p-adj		p-val	
		up in B vs A	down in B vs A	up in B vs A	down in B vs A
G2M_1	G2M_2	250	229	624	567
G2M_1	G2M_3	749	750	1,069	1,008
G2M_1	G2M_4	1,014	1,056	1,285	1,294
G2M_1	input	765	677	1,042	997
G2M_1	unstained_input	903	785	1,135	1,098
G2M_2	G2M_3	304	243	555	537
G2M_2	G2M_4	698	691	971	1,001
G2M_2	input	456	251	749	591
G2M_2	unstained_input	618	420	925	794
G2M_3	G2M_4	189	105	495	461
G2M_3	input	277	146	549	428
G2M_3	unstained_input	461	316	838	662
G2M_4	input	398	301	712	584
G2M_4	unstained_input	578	445	868	768
input	unstained_input	13	15	275	231

Number differential genes, *S. pombe*

A	B	p-adj		p-val	
		up in B vs A	down in B vs A	up in B vs A	down in B vs A
G2M_1	G2M_2	0	0	3	10
G2M_1	G2M_3	0	0	23	1
G2M_1	G2M_4	0	2	3	15
G2M_1	input	1	0	181	5
G2M_1	unstained_input	3,688	1	3,840	1
G2M_2	G2M_3	0	0	79	0
G2M_2	G2M_4	0	1	11	12
G2M_2	input	1	1	360	3
G2M_2	unstained_input	3795	1	3927	1
G2M_3	G2M_4	0	1	2	140
G2M_3	input	0	1	42	4
G2M_3	unstained_input	3573	1	3720	2
G2M_4	input	4	0	465	4
G2M_4	unstained_input	3807	1	3938	1
input	unstained_input	3297	1	3505	1

#	2019-07-06-G2M_1_rep1-A1	2019-07-06-G2M_1_rep2-A2	2019-07-06-G2M_2_rep1-B1	2019-07-06-G2M_2_rep1-B2	2019-07-06-G2M_3_rep1-C1	2019-07-06-G2M_3_rep2-C2	2019-07-06-G2M_4_rep1-D1	2019-07-06-G2M_4_rep2-D2	2019-07-06-input_rep1-E1	2019-07-06-input_rep2-E2	2019-07-06-unstained_input_rep1-F1	2019-07-06-unstained_input_rep2-F2	2019-08-21-A3-G2M_1_rep3	2019-08-21-A4-G2M_1_rep4	2019-08-21-B3-G2M_2_rep3	2019-08-21-B4-G2M_2_rep4	2019-08-21-C3-G2M_3_rep3	2019-08-21-C4-G2M_3_rep4	2019-08-21-D3-G2M_4_rep3	2019-08-21-D4-G2M_4_rep4	2019-08-21-E3-input_rep3	2019-08-21-E4-input_rep4	2019-08-21-F3-unstained_input_rep3	2019-08-21-F4-unstained_input_rep4	2019-10-25-A3-G2M_1_rep3	2019-10-25-A4-G2M_1_rep4	2019-10-25-B3-G2M_2_rep3	2019-10-25-B4-G2M_2_rep4	2019-10-25-C3-G2M_3_rep3	2019-10-25-C4-G2M_3_rep4	2019-10-25-D3-G2M_4_rep3	2019-10-25-D4-G2M_4_rep4	2019-10-25-E3-input_rep3	2019-10-25-E4-input_rep4	2019-10-25-F3-unstained_input_rep3	2019-10-25-F4-unstained_input_rep4	
2019-07-06-G2M_1_rep1-A1	1.00	0.99	0.99	0.98	0.97	0.97	0.96	0.96	0.99	0.99	0.99	0.98	0.63	0.66	0.58	0.63	0.60	0.63	0.69	0.67	0.57	0.65	0.65	0.62	0.97	0.96	0.97	0.94	0.94	0.95	0.92	0.94	0.93	0.92	0.90	0.96	0.94
2019-07-06-G2M_1_rep2-A2	0.99	1.00	0.98	0.99	0.98	0.98	0.97	0.97	0.97	0.98	0.98	0.99	0.64	0.67	0.59	0.64	0.61	0.64	0.70	0.68	0.58	0.66	0.66	0.63	0.96	0.95	0.96	0.93	0.92	0.94	0.91	0.92	0.92	0.90	0.96	0.94	
2019-07-06-G2M_2_rep1-B1	0.99	0.98	1.00	0.98	0.98	0.98	0.97	0.97	0.99	0.99	0.99	0.98	0.66	0.70	0.63	0.67	0.65	0.68	0.74	0.72	0.61	0.70	0.70	0.66	0.96	0.95	0.97	0.95	0.95	0.97	0.94	0.95	0.94	0.93	0.98	0.98	0.97
2019-07-06-G2M_2_rep1-B2	0.98	0.99	0.98	1.00	0.99	0.99	0.99	0.98	0.98	0.99	0.99	0.99	0.64	0.67	0.60	0.65	0.62	0.65	0.71	0.70	0.58	0.67	0.67	0.64	0.96	0.95	0.96	0.94	0.94	0.96	0.93	0.94	0.93	0.91	0.96	0.95	
2019-07-06-G2M_3_rep1-C1	0.97	0.98	0.98	0.99	1.00	1.00	1.00	1.00	0.98	0.98	0.98	0.99	0.68	0.71	0.65	0.70	0.67	0.71	0.77	0.75	0.63	0.72	0.72	0.69	0.94	0.94	0.95	0.93	0.94	0.96	0.94	0.95	0.93	0.92	0.96	0.95	
2019-07-06-G2M_3_rep2-C2	0.97	0.98	0.98	0.99	1.00	1.00	1.00	1.00	0.98	0.98	0.98	0.99	0.67	0.70	0.63	0.68	0.65	0.69	0.75	0.74	0.61	0.71	0.70	0.67	0.95	0.94	0.96	0.93	0.94	0.96	0.94	0.95	0.93	0.92	0.97	0.95	
2019-07-06-G2M_4_rep1-D1	0.96	0.97	0.97	0.99	1.00	1.00	1.00	1.00	0.98	0.98	0.98	0.99	0.67	0.70	0.63	0.68	0.66	0.69	0.76	0.74	0.62	0.71	0.71	0.68	0.94	0.94	0.95	0.93	0.94	0.96	0.94	0.95	0.93	0.92	0.96	0.95	
2019-07-06-G2M_4_rep2-D2	0.96	0.97	0.97	0.98	1.00	1.00	1.00	1.00	0.98	0.98	0.98	0.99	0.68	0.71	0.64	0.69	0.67	0.70	0.76	0.75	0.63	0.72	0.72	0.68	0.93	0.93	0.95	0.92	0.94	0.96	0.94	0.95	0.93	0.91	0.96	0.95	
2019-07-06-input_rep1-E1	0.99	0.97	0.99	0.98	0.98	0.98	0.98	1.00	1.00	1.00	0.98	0.99	0.65	0.69	0.61	0.65	0.63	0.66	0.73	0.71	0.60	0.69	0.69	0.66	0.96	0.95	0.97	0.94	0.95	0.97	0.94	0.96	0.95	0.93	0.98	0.97	
2019-07-06-input_rep2-E2	0.99	0.98	0.99	0.99	0.98	0.98	0.98	1.00	1.00	1.00	0.99	0.99	0.65	0.68	0.61	0.65	0.63	0.66	0.72	0.71	0.60	0.69	0.68	0.65	0.96	0.96	0.97	0.94	0.95	0.97	0.94	0.96	0.95	0.93	0.98	0.97	
2019-07-06-unstained_input_rep1-F1	0.99	0.98	0.99	0.99	0.98	0.98	0.98	1.00	1.00	1.00	0.99	0.99	0.66	0.69	0.61	0.66	0.63	0.67	0.73	0.71	0.60	0.69	0.69	0.66	0.96	0.95	0.97	0.94	0.95	0.97	0.94	0.96	0.95	0.93	0.98	0.97	
2019-07-06-unstained_input_rep2-F2	0.98	0.99	0.98	0.99	0.99	0.99	0.99	0.99	0.98	0.99	0.99	1.00	0.68	0.71	0.64	0.68	0.66	0.69	0.75	0.74	0.63	0.72	0.72	0.68	0.95	0.95	0.95	0.93	0.94	0.96	0.93	0.94	0.92	0.97	0.96	0.98	
2019-08-21-A3-G2M_1_rep3	0.63	0.64	0.66	0.64	0.68	0.67	0.67	0.68	0.65	0.65	0.66	0.68	1.00	0.99	0.96	0.98	0.95	0.97	0.95	0.96	0.94	0.98	0.98	0.98	0.63	0.65	0.65	0.65	0.67	0.70	0.67	0.70	0.69	0.68			
2019-08-21-A4-G2M_1_rep4	0.66	0.67	0.70	0.67	0.71	0.70	0.70	0.71	0.69	0.68	0.69	0.71	0.99	1.00	0.96	0.99	0.95	0.97	0.96	0.97	0.95	0.99	0.99	0.98	0.66	0.67	0.67	0.68	0.70	0.72	0.69	0.69	0.70	0.72	0.72	0.71	
2019-08-21-B3-G2M_2_rep3	0.58	0.59	0.63	0.60	0.65	0.63	0.63	0.64	0.61	0.61	0.61	0.64	0.96	0.96	1.00	0.99	0.99	0.97	0.93	0.95	0.98	0.95	0.96	0.97	0.58	0.60	0.60	0.61	0.63	0.66	0.62	0.63	0.62	0.65	0.64	0.63	
2019-08-21-B4-G2M_2_rep4	0.63	0.64	0.67	0.65	0.70	0.68	0.68	0.69	0.66	0.65	0.66	0.68	0.98	0.99	0.99	1.00	0.98	0.99	0.96	0.97	0.96	0.98	0.99	0.98	0.62	0.64	0.65	0.65	0.67	0.70	0.67	0.67	0.67	0.69	0.68	0.68	
2019-08-21-C3-G2M_3_rep3	0.60	0.61	0.65	0.62	0.67	0.65	0.66	0.67	0.63	0.63	0.63	0.66	0.95	0.95	0.99	0.98	1.00	0.97	0.94	0.95	0.97	0.95	0.96	0.97	0.58	0.60	0.61	0.61	0.64	0.67	0.64	0.64	0.63	0.66	0.65	0.64	
2019-08-21-C4-G2M_3_rep4	0.63	0.64	0.68	0.65	0.71	0.69	0.69	0.70	0.66	0.66	0.67	0.69	0.97	0.97	0.97	0.99	0.97	1.00	0.98	0.99	0.94	0.98	0.99	0.98	0.62	0.64	0.65	0.66	0.68	0.71	0.68	0.68	0.67	0.70	0.69	0.68	
2019-08-21-D3-G2M_4_rep3	0.69	0.70	0.74	0.71	0.77	0.75	0.76	0.76	0.73	0.72	0.73	0.75	0.95	0.96	0.93	0.96	0.94	0.98	1.00	0.99	0.91	0.98	0.98	0.96	0.69	0.70	0.71	0.71	0.74	0.77	0.74	0.74	0.74	0.76	0.75	0.75	
2019-08-21-D4-G2M_4_rep4	0.67	0.68	0.72	0.70	0.75	0.74	0.74	0.75	0.71	0.71	0.71	0.74	0.96	0.97	0.95	0.97	0.95	0.99	1.00	1.00	0.93	0.98	0.98	0.97	0.67	0.68	0.69	0.70	0.73	0.75	0.72	0.73	0.72	0.74	0.73	0.73	
2019-08-21-E3-input_rep3	0.57	0.58	0.61	0.58	0.63	0.61	0.62	0.63	0.60	0.60	0.63	0.63	0.94	0.95	0.98	0.96	0.97	0.94	0.91	0.93	1.00	0.94	0.95	0.97	0.56	0.58	0.58	0.59	0.61	0.63	0.61	0.61	0.61	0.64	0.63	0.62	
2019-08-21-E4-input_rep4	0.65	0.66	0.70	0.67	0.72	0.71	0.71	0.72	0.69	0.69	0.69	0.72	0.95	0.98	0.99	0.95	0.98	0.98	0.98	0.94	1.00	0.99	0.99	0.99	0.65	0.67	0.67	0.68	0.70	0.73	0.70	0.71	0.73	0.72	0.72	0.72	
2019-08-21-F3-unstained_input_rep3	0.65	0.66	0.70	0.67	0.72	0.70	0.71	0.72	0.69	0.68	0.69	0.72	0.98	0.99	0.96	0.99	0.99	0.98	0.98	0.95	0.99	1.00	0.99	0.99	0.64	0.66	0.67	0.67	0.70	0.72	0.69	0.69	0.70	0.72	0.71	0.71	
2019-08-21-F4-unstained_input_rep4	0.62	0.63	0.66	0.64	0.69	0.67	0.68	0.68	0.66	0.65	0.66	0.68	0.98	0.98	0.97	0.98	0.97	0.98	0.96	0.97	0.97	0.99	0.99	1.00	0.61	0.63	0.63	0.64	0.66	0.69	0.66	0.66	0.67	0.69	0.68	0.68	
2019-10-25-A3-G2M_1_rep3	0.97	0.96	0.96	0.94	0.95	0.94	0.93	0.96	0.96	0.96	0.95	0.95	0.63	0.66	0.58	0.62	0.58	0.62	0.69	0.67	0.56	0.65	0.64	0.61	1.00	0.99	0.99	0.97	0.96	0.98	0.95	0.95	0.94	0.98	0.98	0.98	
2019-10-25-A4-G2M_1_rep4	0.96	0.95	0.95	0.95	0.94	0.94	0.94	0.93	0.95	0.96	0.95	0.95	0.65	0.67	0.60	0.64	0.60	0.64	0.70	0.68	0.58	0.67	0.66	0.63	0.99	1.00	0.99	0.96	0.96	0.98	0.96	0.95	0.95	0.94	0.98	0.98	
2019-10-25-B3-G2M_2_rep3	0.97	0.96	0.97	0.96	0.95	0.96	0.95	0.95	0.97	0.97	0.95	0.95	0.65	0.67	0.60	0.65	0.61	0.65	0.71	0.69	0.58	0.68	0.67	0.63	0.99	0.99	1.00	0.97	0.97	0.99	0.97	0.97	0.96	0.94	0.98	0.98	
2019-10-25-B4-G2M_2_rep4	0.94	0.93	0.95	0.94	0.93	0.93	0.92	0.94	0.94	0.94	0.93	0.93	0.65	0.68	0.61	0.65	0.61	0.66	0.71	0.70	0.59	0.68	0.67	0.64	0.97	0.96	0.97	1.00	0.99	0.97	0.99	0.99	0.98	0.98	0.96	0.96	
2019-10-25-C3-G2M_3_rep3	0.94	0.92	0.95	0.94	0.94	0.94	0.94	0.94	0.95	0.95	0.95	0.94	0.67	0.70	0.63	0.67	0.64	0.68	0.74	0.73	0.61	0.70	0.70	0.66	0.96	0.96	0.97	0.99	1.00	0.97	0.99	0.99	0.99	0.99	0.97	0.96	
2019-10-25-C4-G2M_3_rep4	0.95	0.94	0.97	0.96	0.96	0.96	0.96	0.96	0.97	0.97	0.96	0.96	0.70	0.72	0.66	0.70	0.67	0.71	0.77	0.75	0.63	0.73	0.72	0.69	0.98	0.98	0.99	0.97	0.97	1.00	0.98	0.98	0.96	0.95	0.99	0.98	
2019-10-25-D3-G2M_4_rep3	0.92	0.91	0.94	0.93	0.94	0.94	0.94	0.94	0.94	0.94	0.94	0.93	0.67	0.69	0.62	0.67	0.64	0.68	0.74	0.72	0.61	0.70	0.69	0.66	0.95	0.96	0.97	0.99	0.99	0.98	1.00	0.99	0.99	0.98	0.96	0.96	
2019-10-25-D4-G2M_4_rep4	0.94	0.92	0.95	0.94	0.95	0.95	0.95	0.95	0.96	0.96	0.96	0.94	0.67	0.69	0.63	0.67	0.64	0.68	0.74	0.73	0.61	0.70	0.69	0.66	0.95	0.95	0.97	0.99	0.99	0.98	0.99	1.00	0.99	0.98	0.97	0.96	
2019-10-25-E3-input_rep3	0.93	0.92	0.94	0.93	0.93	0.93	0.93	0.93	0.95	0.95	0.94	0.94	0.67	0.70	0.62	0.67	0.63	0.																			

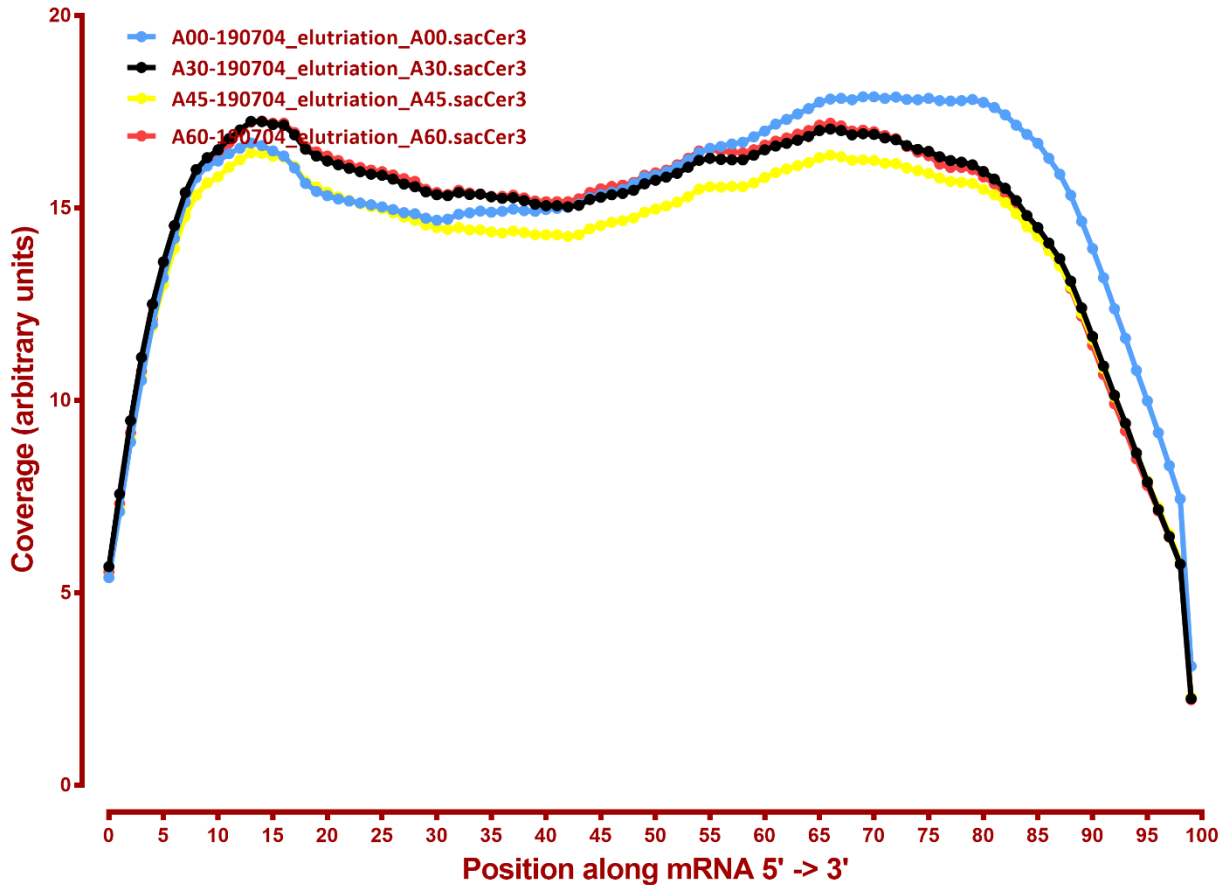
MAPPING STATS

Library	Read Length	Mapping	Species	Raw fragments	Complexity	Unique	Unique Splices	Multi	Multi Splices	Fraction mapped
A00-190704_elutriation_A00	2x150	STAR-2.5.3a	S_pombe	27,356,578	0.97	1,861	163	301	5	0.00
A00-190704_elutriation_A00	2x150	STAR-2.5.3a	sacCer3	27,356,578	0.34	48,185,005	882,409	3,495,577	120,305	0.96
A30-190704_elutriation_A30	2x150	STAR-2.5.3a	S_pombe	23,822,110	1.00	10	0	54	0	0.00
A30-190704_elutriation_A30	2x150	STAR-2.5.3a	sacCer3	23,822,110	0.35	42,717,671	1,072,511	2,350,215	99,771	0.97
A45-190704_elutriation_A45	2x150	STAR-2.5.3a	S_pombe	19,807,640	0.97	2,054	188	182	10	0.00
A45-190704_elutriation_A45	2x150	STAR-2.5.3a	sacCer3	19,807,640	0.35	35,401,542	1,029,524	1,803,763	71,761	0.97
A60-190704_elutriation_A60	2x150	STAR-2.5.3a	S_pombe	23,856,009	0.96	2,341	195	166	6	0.00
A60-190704_elutriation_A60	2x150	STAR-2.5.3a	sacCer3	23,856,009	0.32	42,736,462	1,062,892	2,093,642	92,278	0.96
A75-190704_elutriation_A75	2x150	STAR-2.5.3a	S_pombe	20,765,168	0.98	686	50	104	0	0.00
A75-190704_elutriation_A75	2x150	STAR-2.5.3a	sacCer3	20,765,168	0.31	37,187,291	948,687	1,621,395	82,499	0.96
A90-190704_elutriation_A90	2x150	STAR-2.5.3a	S_pombe	22,436,325	0.97	1,882	154	101	5	0.00
A90-190704_elutriation_A90	2x150	STAR-2.5.3a	sacCer3	22,436,325	0.35	40,236,904	1,078,628	1,916,709	93,351	0.97
B00-190704_elutriation_A00	2x150	STAR-2.5.3a	S_pombe	21,690,376	0.96	2,422	188	165	1	0.00
B00-190704_elutriation_A00	2x150	STAR-2.5.3a	sacCer3	21,690,376	0.37	38,509,381	735,811	2,392,942	94,368	0.96
B30-190704_elutriation_A30	2x150	STAR-2.5.3a	S_pombe	29,126,599	0.97	1,662	112	209	7	0.00
B30-190704_elutriation_A30	2x150	STAR-2.5.3a	sacCer3	29,126,599	0.32	51,892,213	1,279,989	3,153,484	114,846	0.97
B45-190704_elutriation_A45	2x150	STAR-2.5.3a	S_pombe	21,031,271	0.96	3,665	273	336	8	0.00
B45-190704_elutriation_A45	2x150	STAR-2.5.3a	sacCer3	21,031,271	0.35	36,854,836	1,118,906	2,279,456	84,234	0.96
B60-190704_elutriation_A60	2x150	STAR-2.5.3a	S_pombe	24,790,224	0.98	3,215	259	264	6	0.00
B60-190704_elutriation_A60	2x150	STAR-2.5.3a	sacCer3	24,790,224	0.32	43,265,331	1,290,499	2,891,830	134,300	0.96
B75-190704_elutriation_A75	2x150	STAR-2.5.3a	S_pombe	22,456,702	0.96	1,181	89	128	2	0.00
B75-190704_elutriation_A75	2x150	STAR-2.5.3a	sacCer3	22,456,702	0.33	39,828,299	1,314,747	2,096,182	123,924	0.97
B90-190704_elutriation_A90	2x150	STAR-2.5.3a	S_pombe	29,761,680	0.97	1,375	125	143	1	0.00
B90-190704_elutriation_A90	2x150	STAR-2.5.3a	sacCer3	29,761,680	0.32	52,725,901	1,465,177	3,104,358	146,624	0.97
C00-190704_elutriation_A00	2x150	STAR-2.5.3a	S_pombe	20,690,474	0.97	774	68	176	0	0.00
C00-190704_elutriation_A00	2x150	STAR-2.5.3a	sacCer3	20,690,474	0.37	36,698,962	640,152	2,399,605	87,455	0.96
C30-190704_elutriation_A30	2x150	STAR-2.5.3a	S_pombe	23,713,522	1.00	22	4	439	13	0.00
C30-190704_elutriation_A30	2x150	STAR-2.5.3a	sacCer3	23,713,522	0.37	41,593,466	1,084,854	2,651,037	93,121	0.96
C45-190704_elutriation_A45	2x150	STAR-2.5.3a	S_pombe	21,701,085	0.98	543	65	190	0	0.00
C45-190704_elutriation_A45	2x150	STAR-2.5.3a	sacCer3	21,701,085	0.32	38,246,857	1,113,205	2,091,976	87,694	0.96
C60-190704_elutriation_A60	2x150	STAR-2.5.3a	S_pombe	21,584,921	1.00	4	0	106	0	0.00
C60-190704_elutriation_A60	2x150	STAR-2.5.3a	sacCer3	21,584,921	0.35	38,030,387	1,221,215	2,425,186	112,644	0.97
C75-190704_elutriation_A75	2x150	STAR-2.5.3a	S_pombe	20,778,476	0.73	15	3	112	0	0.00
C75-190704_elutriation_A75	2x150	STAR-2.5.3a	sacCer3	20,778,476	0.29	36,633,057	984,213	2,081,009	114,969	0.96
C90-190704_elutriation_A90	2x150	STAR-2.5.3a	S_pombe	23,141,764	1.00	12	0	114	0	0.00
C90-190704_elutriation_A90	2x150	STAR-2.5.3a	sacCer3	23,141,764	0.33	41,064,249	1,190,617	2,390,447	111,345	0.97

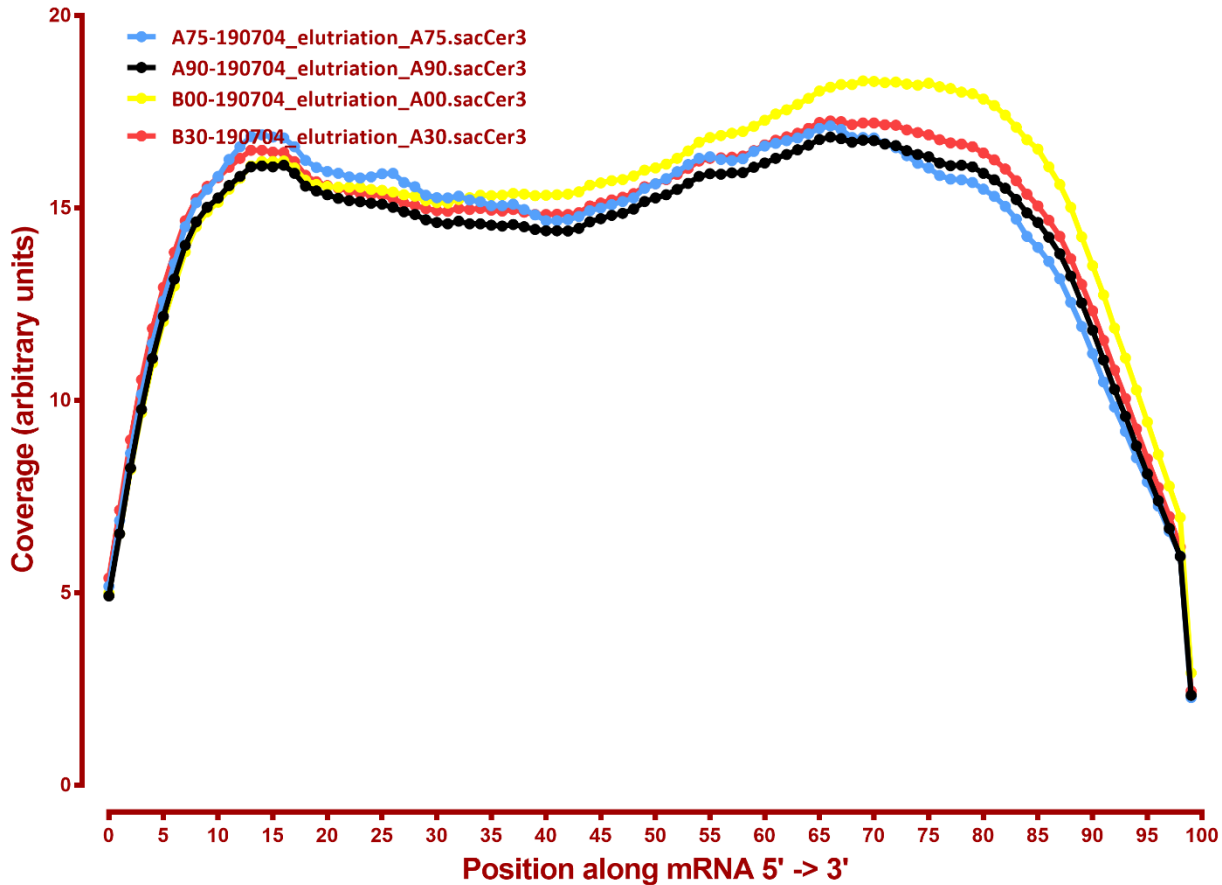
READ DISTRIBUTION

#	Exonic:	Intergenic:	Intronic:
2019-10-25-A00-190704_elutriation_A00.S_pombe	0.98	0.01	0.01
2019-10-25-A00-190704_elutriation_A00.sacCer3	0.92	0.07	0.00
2019-10-25-A30-190704_elutriation_A30.S_pombe	1.00	0.00	0.00
2019-10-25-A30-190704_elutriation_A30.sacCer3	0.93	0.06	0.00
2019-10-25-A45-190704_elutriation_A45.S_pombe	0.98	0.01	0.01
2019-10-25-A45-190704_elutriation_A45.sacCer3	0.93	0.07	0.00
2019-10-25-A60-190704_elutriation_A60.S_pombe	0.98	0.01	0.00
2019-10-25-A60-190704_elutriation_A60.sacCer3	0.93	0.07	0.00
2019-10-25-A75-190704_elutriation_A75.S_pombe	0.98	0.01	0.00
2019-10-25-A75-190704_elutriation_A75.sacCer3	0.93	0.07	0.00
2019-10-25-A90-190704_elutriation_A90.S_pombe	0.98	0.02	0.01
2019-10-25-A90-190704_elutriation_A90.sacCer3	0.93	0.07	0.00
2019-10-25-B00-190704_elutriation_A00.S_pombe	0.98	0.01	0.00
2019-10-25-B00-190704_elutriation_A00.sacCer3	0.93	0.07	0.00
2019-10-25-B30-190704_elutriation_A30.S_pombe	0.99	0.01	0.00
2019-10-25-B30-190704_elutriation_A30.sacCer3	0.93	0.07	0.00
2019-10-25-B45-190704_elutriation_A45.S_pombe	0.98	0.02	0.01
2019-10-25-B45-190704_elutriation_A45.sacCer3	0.93	0.07	0.00
2019-10-25-B60-190704_elutriation_A60.S_pombe	0.98	0.02	0.01
2019-10-25-B60-190704_elutriation_A60.sacCer3	0.93	0.07	0.00
2019-10-25-B75-190704_elutriation_A75.S_pombe	0.99	0.01	0.00
2019-10-25-B75-190704_elutriation_A75.sacCer3	0.93	0.07	0.00
2019-10-25-B90-190704_elutriation_A90.S_pombe	0.98	0.02	0.00
2019-10-25-B90-190704_elutriation_A90.sacCer3	0.93	0.07	0.00
2019-10-25-C00-190704_elutriation_A00.S_pombe	0.98	0.01	0.01
2019-10-25-C00-190704_elutriation_A00.sacCer3	0.92	0.07	0.00
2019-10-25-C30-190704_elutriation_A30.S_pombe	1.00	0.00	0.00
2019-10-25-C30-190704_elutriation_A30.sacCer3	0.93	0.07	0.00
2019-10-25-C45-190704_elutriation_A45.S_pombe	0.98	0.01	0.01
2019-10-25-C45-190704_elutriation_A45.sacCer3	0.93	0.07	0.00
2019-10-25-C60-190704_elutriation_A60.S_pombe	1.00	0.00	0.00
2019-10-25-C60-190704_elutriation_A60.sacCer3	0.93	0.07	0.00
2019-10-25-C75-190704_elutriation_A75.S_pombe	1.00	0.00	0.00
2019-10-25-C75-190704_elutriation_A75.sacCer3	0.93	0.07	0.00
2019-10-25-C90-190704_elutriation_A90.S_pombe	1.00	0.00	0.00
2019-10-25-C90-190704_elutriation_A90.sacCer3	0.93	0.07	0.00

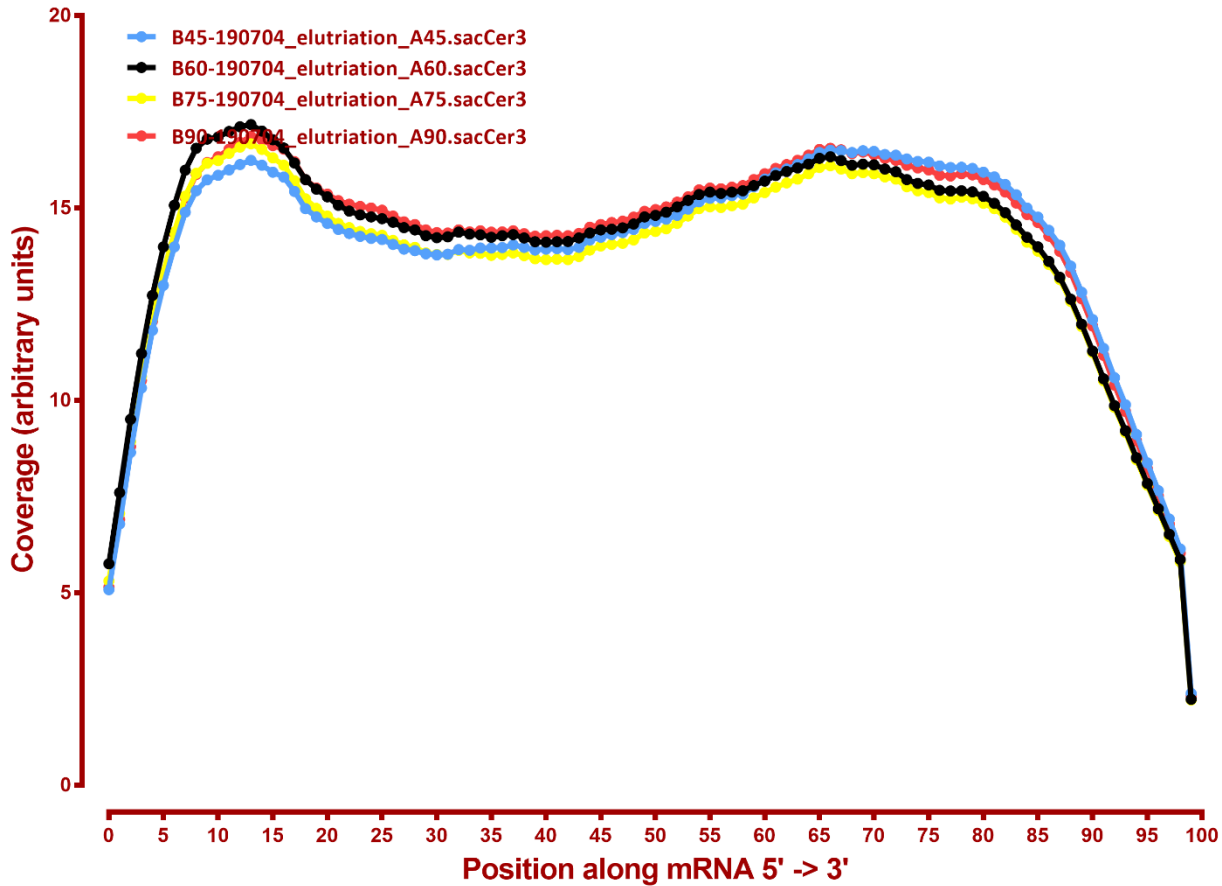
Coverage of genes; >1000bp, sacCer3



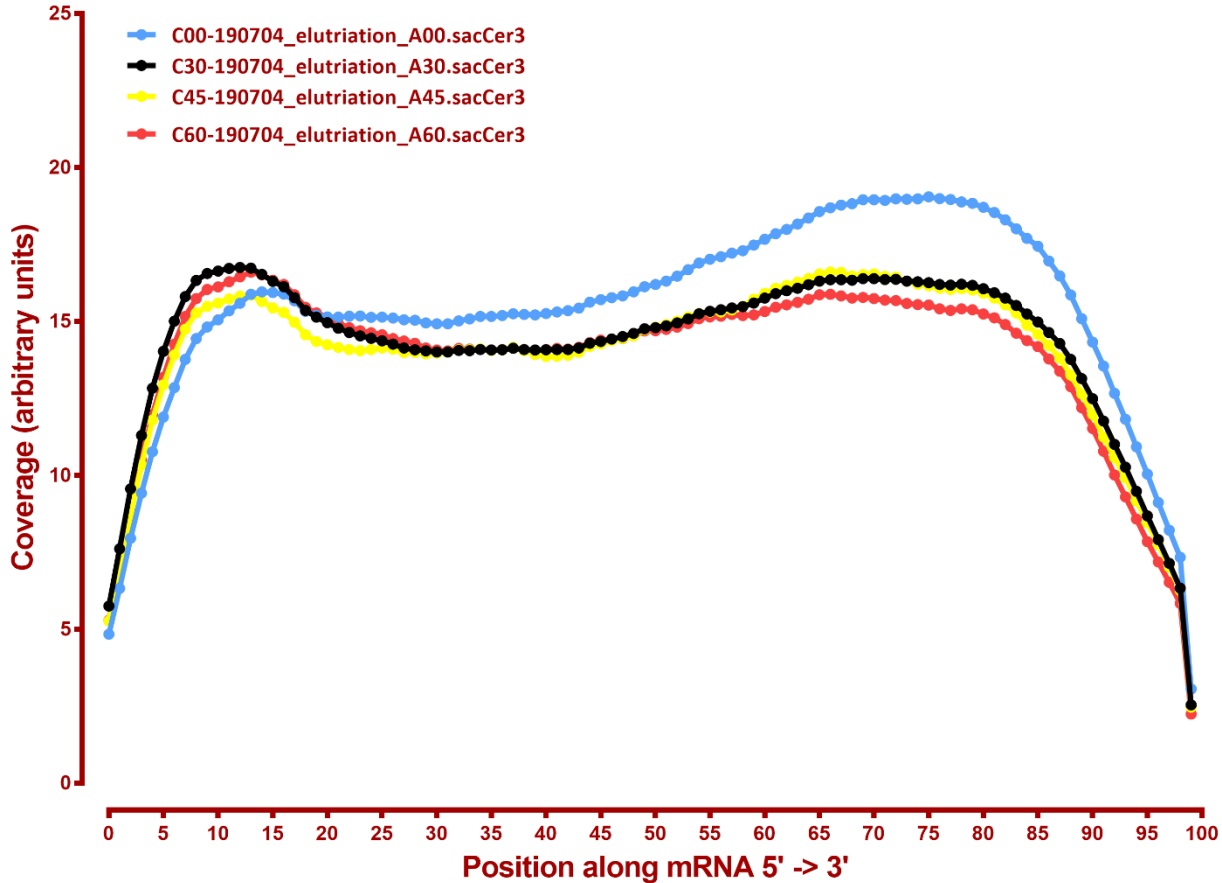
Coverage of genes; >1000bp, sacCer3



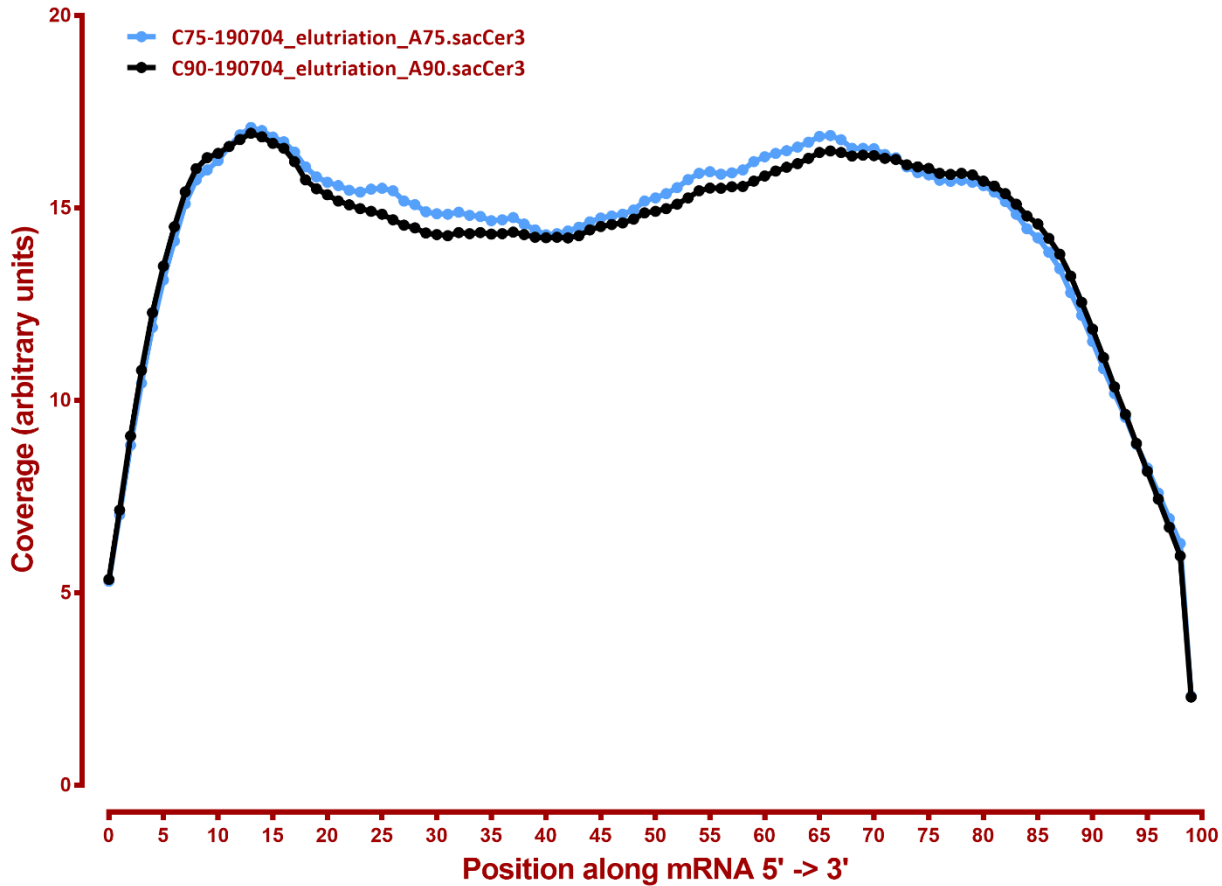
Coverage of genes; >1000bp, sacCer3



Coverage of genes; >1000bp, sacCer3



Coverage of genes; >1000bp, sacCer3



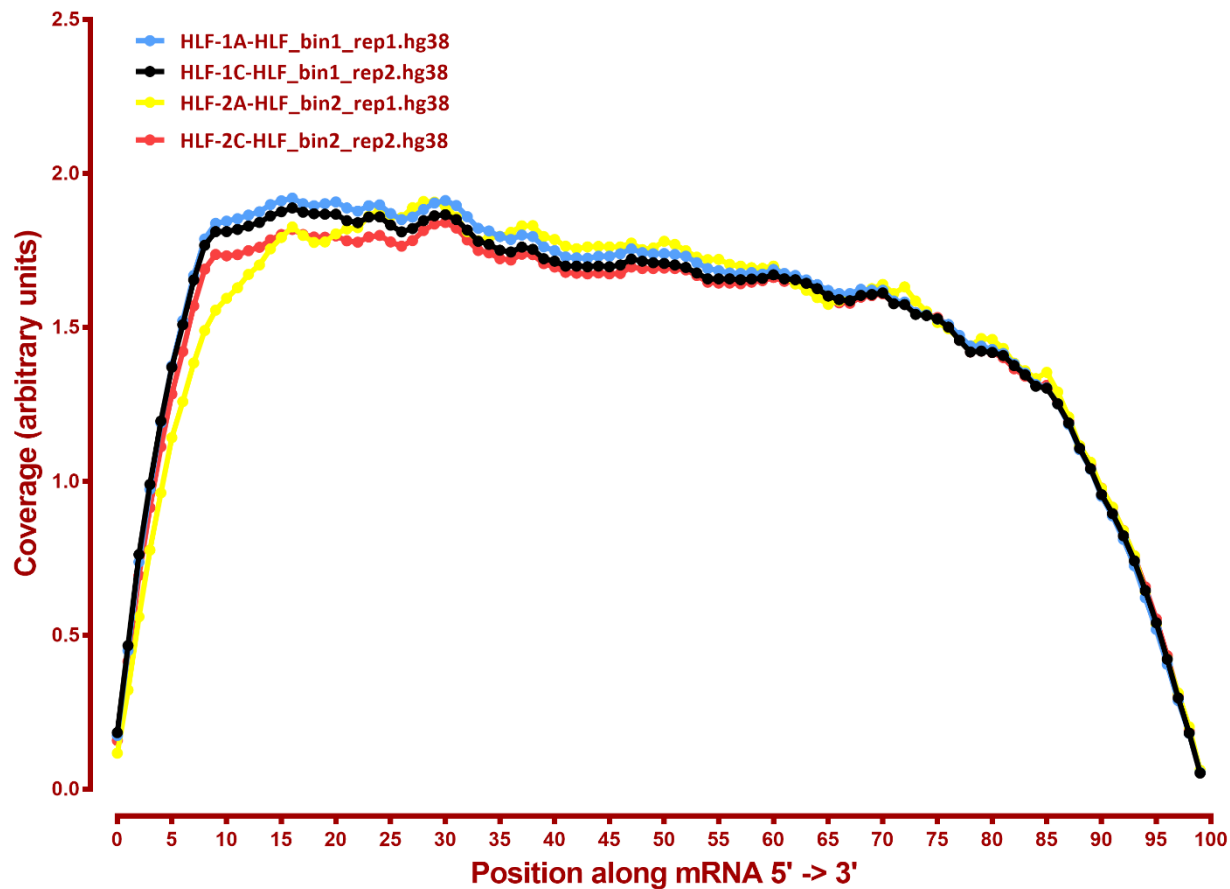
MAPPING STATS

Library	Read Length	Mapping	Species	Raw fragments	Complexity	Unique	Unique Splices	Multi	Multi Splices	Fraction mapped
HLF-1A-HLF_bin1_rep1	2x150	STAR-2.5.3a	dm6	38,171,561	0.49	7,983,462	2,627,896	1,478,116	139,650	0.16
HLF-1A-HLF_bin1_rep1	2x150	STAR-2.5.3a	hg38	38,171,561	0.47	30,204,709	23,713,467	5,888,904	1,661,218	0.81
HLF-1C-HLF_bin1_rep2	2x150	STAR-2.5.3a	dm6	45,021,805	0.48	10,255,869	3,400,893	1,929,664	190,234	0.18
HLF-1C-HLF_bin1_rep2	2x150	STAR-2.5.3a	hg38	45,021,805	0.47	34,455,698	27,483,870	7,166,552	1,938,062	0.79
HLF-2A-HLF_bin2_rep1	2x150	STAR-2.5.3a	dm6	43,599,592	0.42	9,320,292	2,810,402	1,817,314	156,474	0.16
HLF-2A-HLF_bin2_rep1	2x150	STAR-2.5.3a	hg38	43,599,592	0.40	34,701,214	27,437,656	5,609,022	1,903,912	0.80
HLF-2C-HLF_bin2_rep2	2x150	STAR-2.5.3a	dm6	40,141,480	0.48	7,808,609	2,556,471	1,538,957	141,237	0.15
HLF-2C-HLF_bin2_rep2	2x150	STAR-2.5.3a	hg38	40,141,480	0.46	32,547,800	25,629,668	5,544,864	1,781,512	0.82
HLF-3A-HLF_bin3_rep1	2x150	STAR-2.5.3a	dm6	42,347,022	0.50	6,977,859	2,279,531	1,345,164	123,902	0.13
HLF-3A-HLF_bin3_rep1	2x150	STAR-2.5.3a	hg38	42,347,022	0.46	34,290,657	27,278,113	7,841,805	1,971,871	0.84
HLF-3C-HLF_bin3_rep2	2x150	STAR-2.5.3a	dm6	49,312,645	0.50	9,233,028	3,090,406	1,702,676	163,794	0.14
HLF-3C-HLF_bin3_rep2	2x150	STAR-2.5.3a	hg38	49,312,645	0.47	37,805,140	30,713,094	10,292,669	2,211,567	0.82
HLF-4A-HLF_bin4_rep1	2x150	STAR-2.5.3a	dm6	50,099,696	0.49	8,593,768	2,800,058	1,680,641	155,737	0.13
HLF-4A-HLF_bin4_rep1	2x150	STAR-2.5.3a	hg38	50,099,696	0.45	40,580,974	32,294,834	8,286,048	2,373,336	0.83
HLF-4C-HLF_bin4_rep2	2x150	STAR-2.5.3a	dm6	44,265,991	0.52	6,822,736	2,286,304	1,256,603	121,785	0.12
HLF-4C-HLF_bin4_rep2	2x150	STAR-2.5.3a	hg38	44,265,991	0.47	35,014,289	29,396,103	8,369,127	2,149,509	0.85
HLF-pre-Sort-A-HLF_pre-sort_rep1	2x150	STAR-2.5.3a	dm6	56,756,999	0.46	8,118,270	2,703,860	1,475,209	148,467	0.11
HLF-pre-Sort-A-HLF_pre-sort_rep1	2x150	STAR-2.5.3a	hg38	56,756,999	0.44	34,081,095	27,224,451	9,335,608	1,961,766	0.64
HLF-pre-Sort-C-HLF_pre-sort_rep2	2x150	STAR-2.5.3a	dm6	37,582,649	0.48	10,866,374	3,725,252	2,241,045	217,783	0.23
HLF-pre-Sort-C-HLF_pre-sort_rep2	2x150	STAR-2.5.3a	hg38	37,582,649	0.45	42,232,626	36,513,828	11,079,053	2,826,305	1.23
HLF-SortAll-A-HLF_sort-all_rep1	2x150	STAR-2.5.3a	dm6	43,663,901	0.47	3,958,329	1,495,713	668,005	86,707	0.07
HLF-SortAll-A-HLF_sort-all_rep1	2x150	STAR-2.5.3a	hg38	43,663,901	0.46	31,342,895	26,677,089	6,808,919	1,920,227	0.76

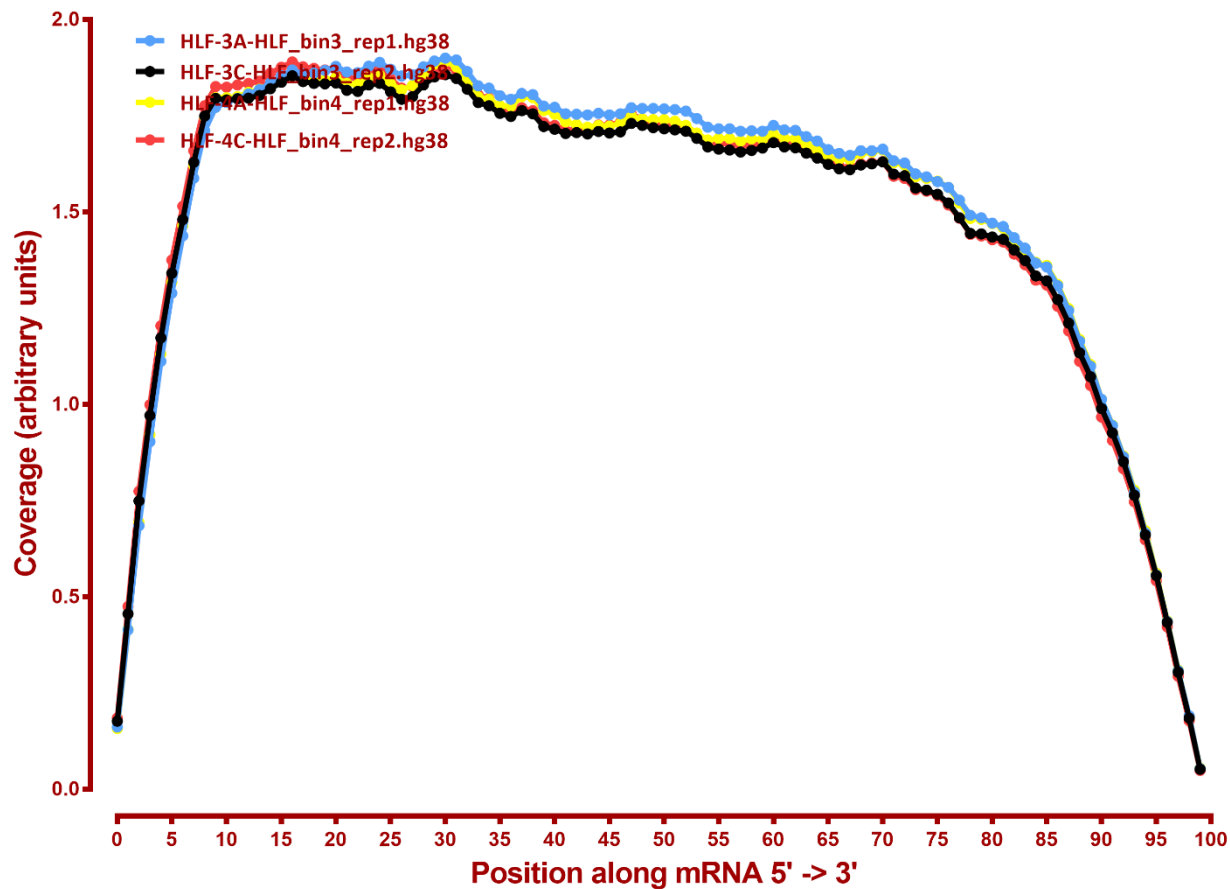
READ DISTRIBUTION

#	Exonic:	Intergenic:	Intronic:
2019-10-25-HLF-1A-HLF_bin1_rep1.dm6	0.96	0.01	0.03
2019-10-25-HLF-1A-HLF_bin1_rep1.hg38	0.92	0.01	0.07
2019-10-25-HLF-1C-HLF_bin1_rep2.dm6	0.96	0.01	0.03
2019-10-25-HLF-1C-HLF_bin1_rep2.hg38	0.92	0.01	0.07
2019-10-25-HLF-2A-HLF_bin2_rep1.dm6	0.96	0.01	0.03
2019-10-25-HLF-2A-HLF_bin2_rep1.hg38	0.92	0.01	0.07
2019-10-25-HLF-2C-HLF_bin2_rep2.dm6	0.96	0.01	0.03
2019-10-25-HLF-2C-HLF_bin2_rep2.hg38	0.92	0.01	0.07
2019-10-25-HLF-3A-HLF_bin3_rep1.dm6	0.96	0.01	0.03
2019-10-25-HLF-3A-HLF_bin3_rep1.hg38	0.93	0.01	0.06
2019-10-25-HLF-3C-HLF_bin3_rep2.dm6	0.96	0.01	0.03
2019-10-25-HLF-3C-HLF_bin3_rep2.hg38	0.92	0.01	0.07
2019-10-25-HLF-4A-HLF_bin4_rep1.dm6	0.96	0.01	0.03
2019-10-25-HLF-4A-HLF_bin4_rep1.hg38	0.92	0.01	0.07
2019-10-25-HLF-4C-HLF_bin4_rep2.dm6	0.96	0.01	0.03
2019-10-25-HLF-4C-HLF_bin4_rep2.hg38	0.93	0.01	0.06
2019-10-25-HLF-SortAll-A-HLF_sort-all_rep1.dm6	0.96	0.01	0.03
2019-10-25-HLF-SortAll-A-HLF_sort-all_rep1.hg38	0.92	0.01	0.07
2019-10-25-HLF-pre-Sort-A-HLF_pre-sort_rep1.dm6	0.96	0.01	0.02
2019-10-25-HLF-pre-Sort-A-HLF_pre-sort_rep1.hg38	0.95	0.01	0.04
2019-10-25-HLF-pre-Sort-C-HLF_pre-sort_rep2.dm6	0.98	0.01	0.02
2019-10-25-HLF-pre-Sort-C-HLF_pre-sort_rep2.hg38	0.94	0.01	0.05

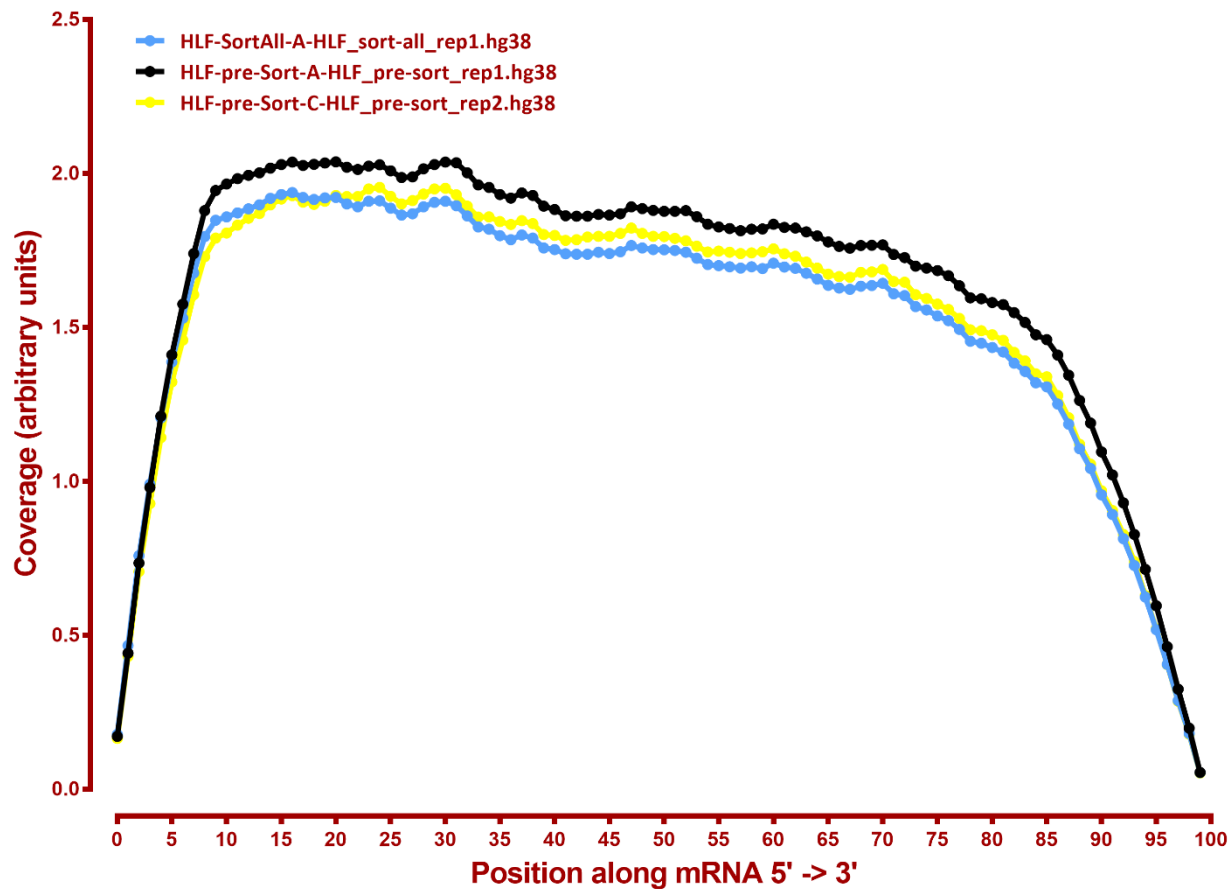
Coverage of genes; >1000bp, sacCer3



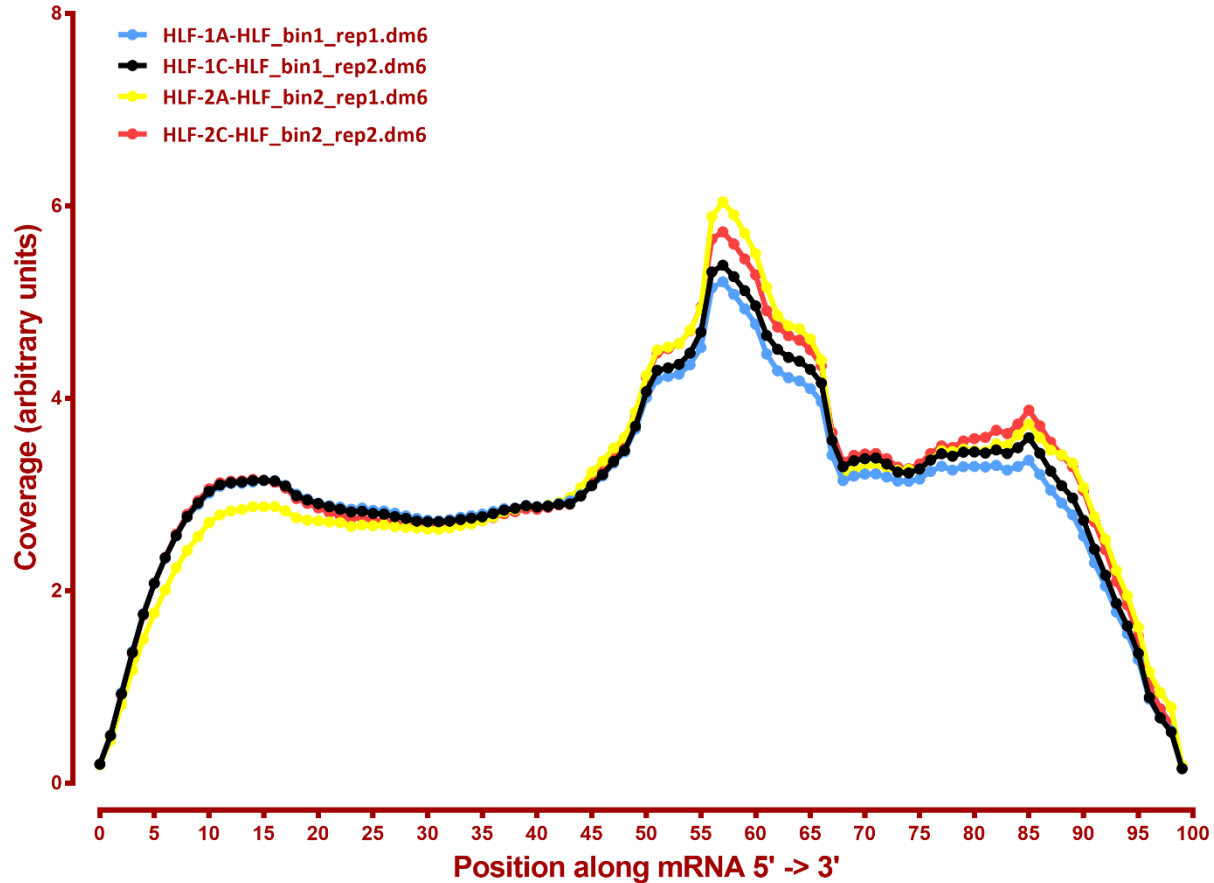
Coverage of genes; >1000bp, sacCer3



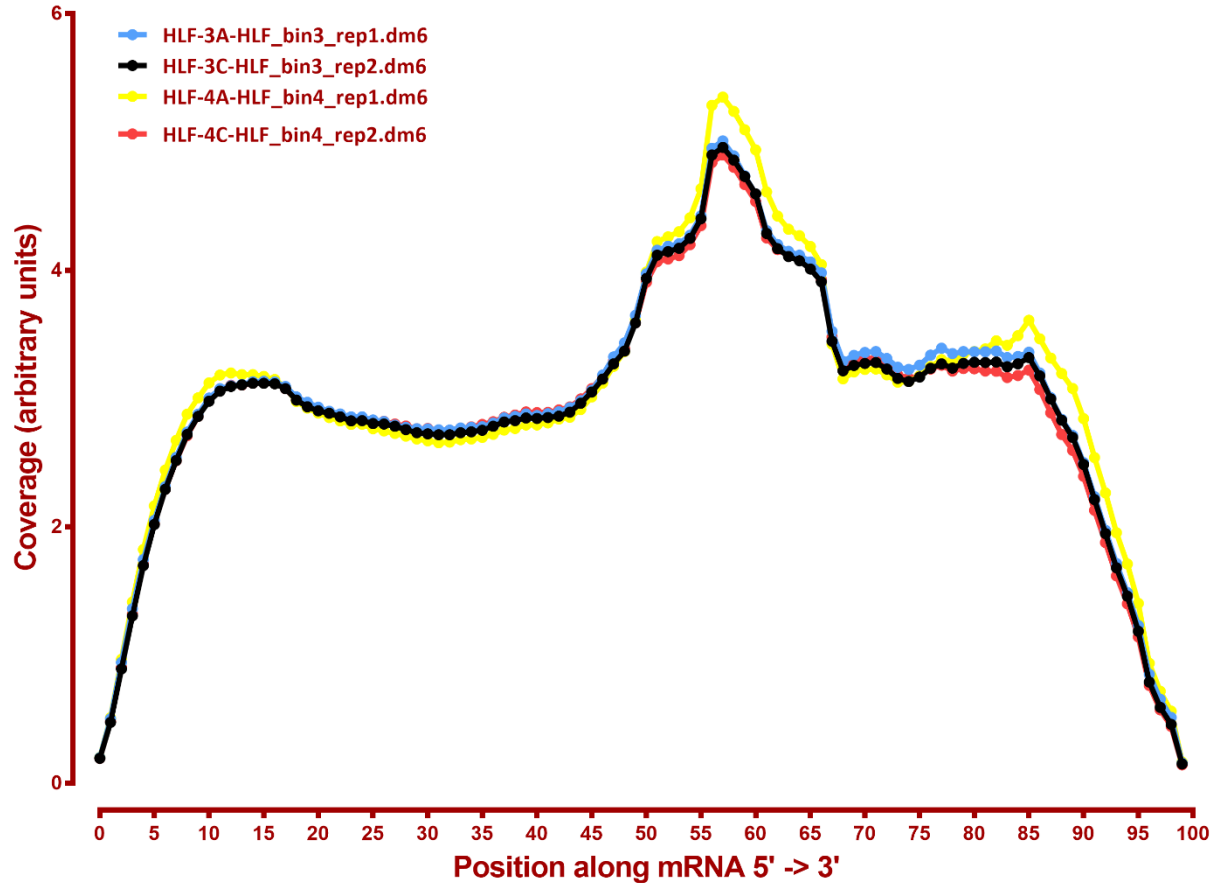
Coverage of genes; >1000bp, sacCer3



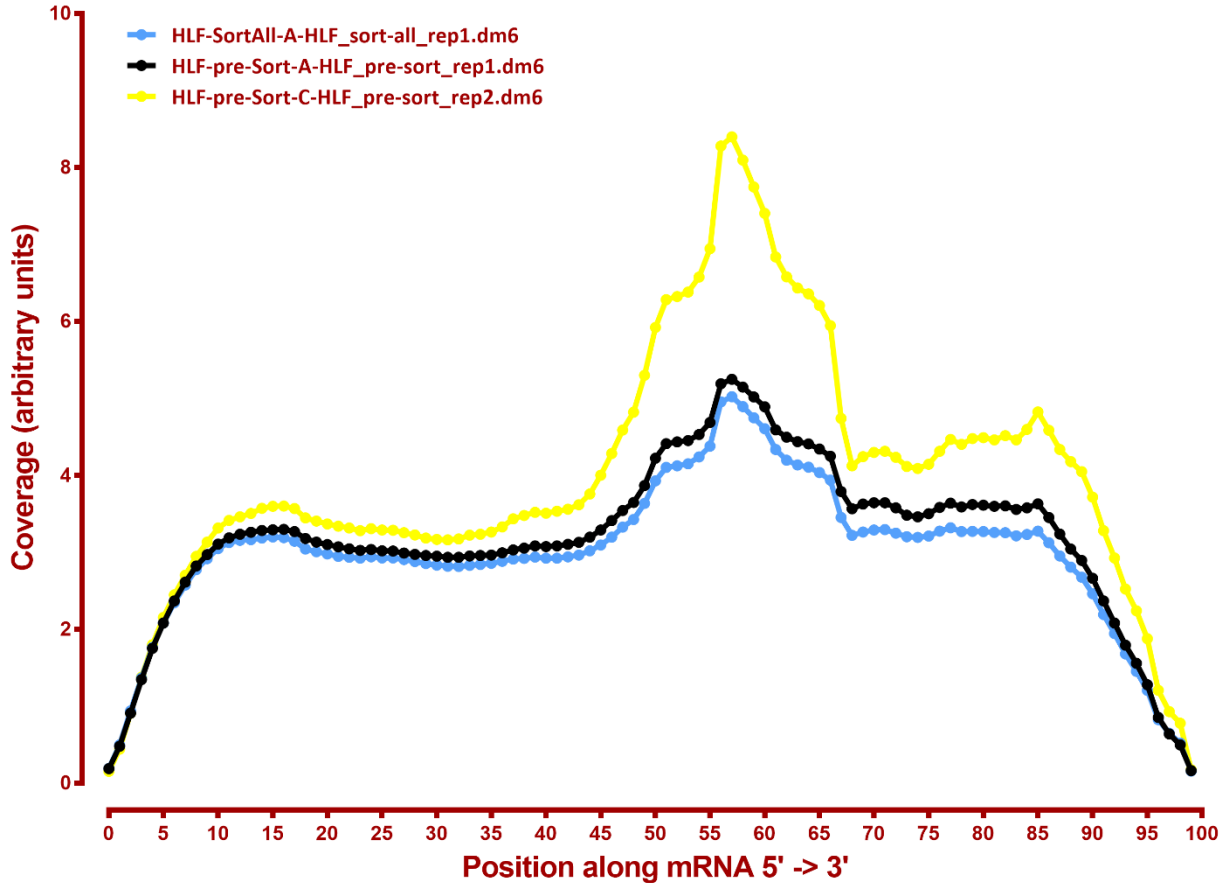
Coverage of genes; >1000bp, *S.pombe*



Coverage of genes; >1000bp, *S.pombe*



Coverage of genes; >1000bp, *S.pombe*



Number differential genes, hg38

A	B	p-adj		p-val	
		up in B vs A	down in B vs A	up in B vs A	down in B vs A
HLF_bin1	HLF_bin2	10	30	565	552
HLF_bin1	HLF_bin3	74	56	785	655
HLF_bin1	HLF_bin4	237	81	1,075	786
HLF_bin1	HLF_pre-sort	97	155	882	1,084
HLF_bin1	HLF_sort-all	12	11	582	564
HLF_bin2	HLF_bin3	9	3	589	514
HLF_bin2	HLF_bin4	90	9	822	621
HLF_bin2	HLF_pre-sort	93	195	1,047	1,199
HLF_bin2	HLF_sort-all	11	10	597	566
HLF_bin3	HLF_bin4	13	1	313	192
HLF_bin3	HLF_pre-sort	6	62	336	632
HLF_bin3	HLF_sort-all	2	1	314	275
HLF_bin4	HLF_pre-sort	2	53	384	736
HLF_bin4	HLF_sort-all	2	11	367	475
HLF_sort-all	HLF_pre-sort	2	26	322	678

Number differential genes, dm6

A	B	p-adj		p-val	
		up in B vs A	down in B vs A	up in B vs A	down in B vs A
HLF_bin1	HLF_bin2	0	1	31	43
HLF_bin1	HLF_bin3	1	1	30	28
HLF_bin1	HLF_bin4	0	1	30	29
HLF_bin1	HLF_pre-sort	128	399	660	854
HLF_bin1	HLF_sort-all	1	1	53	42
HLF_bin2	HLF_bin3	2	0	56	35
HLF_bin2	HLF_bin4	0	0	46	37
HLF_bin2	HLF_pre-sort	302	582	846	1,020
HLF_bin2	HLF_sort-all	4	0	74	60
HLF_bin3	HLF_bin4	0	1	29	29
HLF_bin3	HLF_pre-sort	103	333	600	785
HLF_bin3	HLF_sort-all	1	1	44	41
HLF_bin4	HLF_pre-sort	136	373	650	844
HLF_bin4	HLF_sort-all	1	0	56	44
HLF_sort-all	HLF_pre-sort	8	94	509	601