

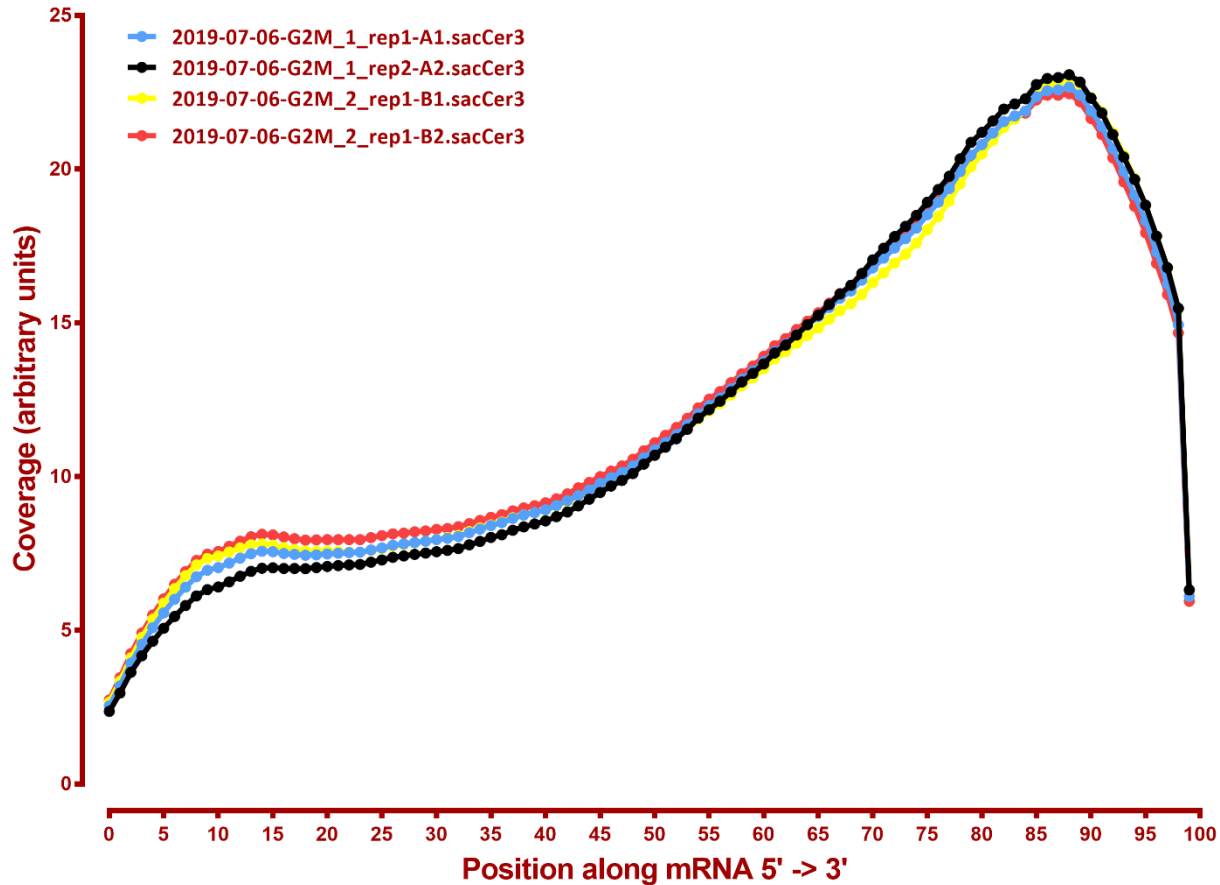
# MAPPING STATS

Library	Read Length	Mapping	Species	Raw fragments	Complexity	Unique	Unique Splices	Multi	Multi Splices	Fraction mapped
2019-07-06-G2M_1_rep1-A1	2x150	STAR-2.5.3a	S_pombe	47,184,310	0.13	41,288,289	3,209,901	1,171,341	190,087	0.49
2019-07-06-G2M_1_rep1-A1	2x150	STAR-2.5.3a	sacCer3	47,184,310	0.12	41,688,350	1,108,380	2,168,046	125,560	0.48
2019-07-06-G2M_1_rep2-A2	2x150	STAR-2.5.3a	S_pombe	46,357,954	0.12	54,927,807	4,244,771	1,681,500	270,188	0.66
2019-07-06-G2M_1_rep2-A2	2x150	STAR-2.5.3a	sacCer3	46,357,954	0.14	26,293,878	724,826	1,406,234	62,372	0.31
2019-07-06-G2M_2_rep1-B1	2x150	STAR-2.5.3a	S_pombe	45,069,766	0.15	31,873,875	2,549,401	855,917	111,051	0.39
2019-07-06-G2M_2_rep1-B1	2x150	STAR-2.5.3a	sacCer3	45,069,766	0.12	47,044,812	1,262,446	2,606,626	134,096	0.57
2019-07-06-G2M_2_rep1-B2	2x150	STAR-2.5.3a	S_pombe	37,777,780	0.12	46,324,874	3,612,612	1,429,804	228,092	0.68
2019-07-06-G2M_2_rep1-B2	2x150	STAR-2.5.3a	sacCer3	37,777,780	0.16	19,475,763	539,413	1,026,868	40,590	0.28
2019-07-06-G2M_3_rep1-C1	2x150	STAR-2.5.3a	S_pombe	51,390,383	0.15	32,278,721	2,535,125	834,902	145,752	0.35
2019-07-06-G2M_3_rep1-C1	2x150	STAR-2.5.3a	sacCer3	51,390,383	0.11	56,553,395	1,611,469	3,119,844	196,726	0.60
2019-07-06-G2M_3_rep2-C2	2x150	STAR-2.5.3a	S_pombe	46,661,117	0.13	47,908,895	3,603,061	1,290,988	261,002	0.57
2019-07-06-G2M_3_rep2-C2	2x150	STAR-2.5.3a	sacCer3	46,661,117	0.14	34,266,601	906,425	1,886,040	77,250	0.40
2019-07-06-G2M_4_rep1-D1	2x150	STAR-2.5.3a	S_pombe	43,966,292	0.14	30,520,417	2,282,525	790,792	106,950	0.38
2019-07-06-G2M_4_rep1-D1	2x150	STAR-2.5.3a	sacCer3	43,966,292	0.12	46,937,142	1,233,468	2,732,370	147,362	0.58
2019-07-06-G2M_4_rep2-D2	2x150	STAR-2.5.3a	S_pombe	41,778,282	0.13	40,489,306	3,056,396	1,234,352	203,604	0.54
2019-07-06-G2M_4_rep2-D2	2x150	STAR-2.5.3a	sacCer3	41,778,282	0.14	32,858,993	865,791	1,984,474	73,384	0.43
2019-07-06-input_rep1-E1	2x150	STAR-2.5.3a	S_pombe	46,822,373	0.13	39,477,151	2,971,465	1,202,399	175,239	0.47
2019-07-06-input_rep1-E1	2x150	STAR-2.5.3a	sacCer3	46,822,373	0.12	42,422,897	1,082,291	2,441,420	96,166	0.49
2019-07-06-input_rep2-E2	2x150	STAR-2.5.3a	S_pombe	42,579,755	0.17	27,108,200	2,064,880	732,503	112,157	0.35
2019-07-06-input_rep2-E2	2x150	STAR-2.5.3a	sacCer3	42,579,755	0.13	47,976,504	1,263,116	2,642,246	140,540	0.61
2019-07-06-unstained_input_rep1-F1	2x150	STAR-2.5.3a	S_pombe	45,641,885	0.16	26,858,064	2,102,448	765,403	107,795	0.33
2019-07-06-unstained_input_rep1-F1	2x150	STAR-2.5.3a	sacCer3	45,641,885	0.12	53,035,126	1,439,714	2,953,573	157,215	0.63
2019-07-06-unstained_input_rep2-F2	2x150	STAR-2.5.3a	S_pombe	39,550,137	0.17	30,419,087	2,354,785	907,615	147,545	0.43
2019-07-06-unstained_input_rep2-F2	2x150	STAR-2.5.3a	sacCer3	39,550,137	0.14	39,113,900	1,083,544	2,179,193	106,437	0.54

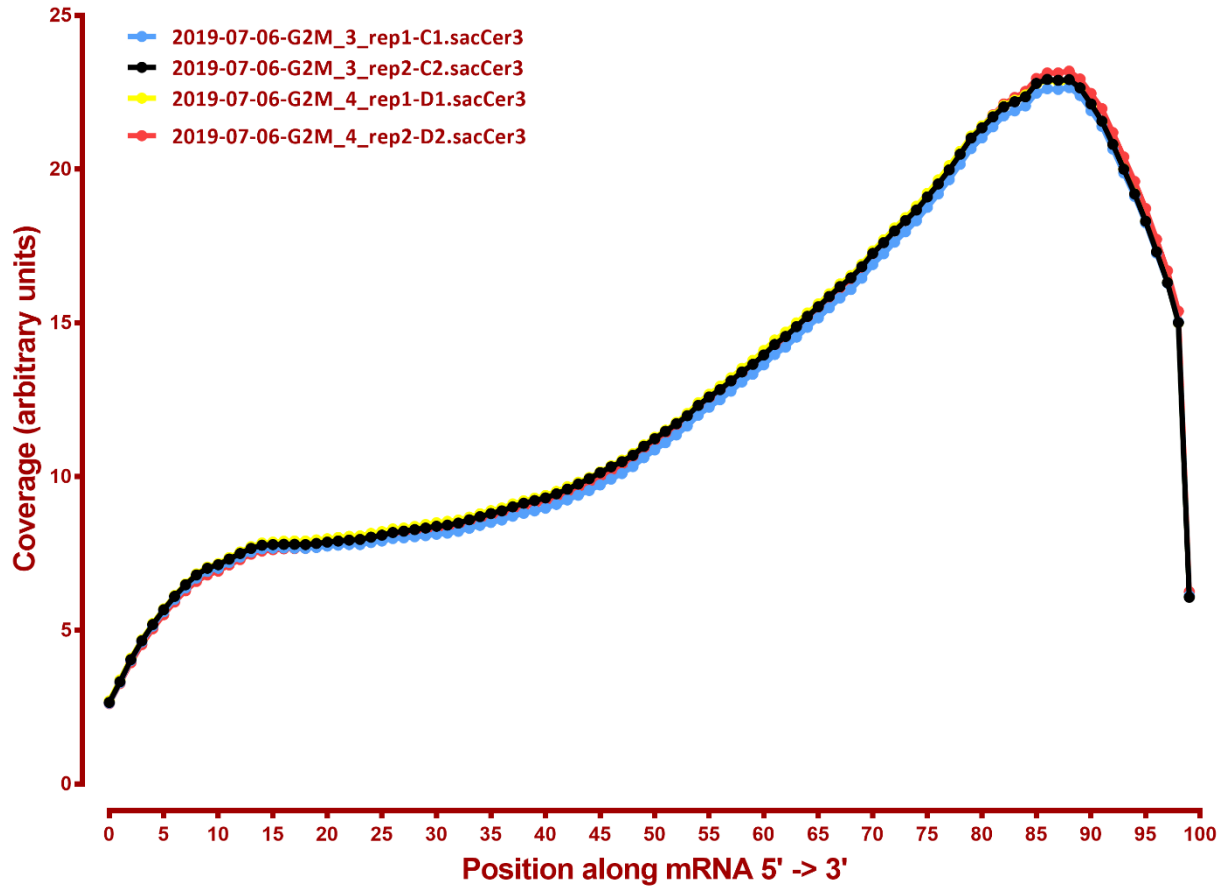
# READ DISTRIBUTION

#	Exonic:	Intergenic:	Intronic:
2019-07-06-G2M_1_rep1-A1.Schizosaccharomyces_pombe.ASM294v2.20	0.98	0.02	0.01
2019-07-06-G2M_1_rep1-A1.sacCer3	0.89	0.10	0.00
2019-07-06-G2M_1_rep2-A2.Schizosaccharomyces_pombe.ASM294v2.20	0.98	0.02	0.01
2019-07-06-G2M_1_rep2-A2.sacCer3	0.89	0.10	0.00
2019-07-06-G2M_2_rep1-B1.Schizosaccharomyces_pombe.ASM294v2.20	0.98	0.02	0.01
2019-07-06-G2M_2_rep1-B1.sacCer3	0.89	0.10	0.00
2019-07-06-G2M_2_rep1-B2.Schizosaccharomyces_pombe.ASM294v2.20	0.98	0.02	0.01
2019-07-06-G2M_2_rep1-B2.sacCer3	0.90	0.10	0.00
2019-07-06-G2M_3_rep1-C1.Schizosaccharomyces_pombe.ASM294v2.20	0.98	0.02	0.01
2019-07-06-G2M_3_rep1-C1.sacCer3	0.90	0.10	0.00
2019-07-06-G2M_3_rep2-C2.Schizosaccharomyces_pombe.ASM294v2.20	0.98	0.01	0.00
2019-07-06-G2M_3_rep2-C2.sacCer3	0.90	0.10	0.00
2019-07-06-G2M_4_rep1-D1.Schizosaccharomyces_pombe.ASM294v2.20	0.98	0.01	0.00
2019-07-06-G2M_4_rep1-D1.sacCer3	0.90	0.10	0.00
2019-07-06-G2M_4_rep2-D2.Schizosaccharomyces_pombe.ASM294v2.20	0.98	0.02	0.00
2019-07-06-G2M_4_rep2-D2.sacCer3	0.90	0.10	0.00
2019-07-06-input_rep1-E1.Schizosaccharomyces_pombe.ASM294v2.20	0.98	0.02	0.00
2019-07-06-input_rep1-E1.sacCer3	0.90	0.10	0.00
2019-07-06-input_rep2-E2.Schizosaccharomyces_pombe.ASM294v2.20	0.98	0.01	0.00
2019-07-06-input_rep2-E2.sacCer3	0.90	0.10	0.00
2019-07-06-unstained_input_rep1-F1.Schizosaccharomyces_pombe.ASM294v2.20	0.98	0.02	0.01
2019-07-06-unstained_input_rep1-F1.sacCer3	0.90	0.10	0.00
2019-07-06-unstained_input_rep2-F2.Schizosaccharomyces_pombe.ASM294v2.20	0.98	0.02	0.01
2019-07-06-unstained_input_rep2-F2.sacCer3	0.90	0.10	0.00

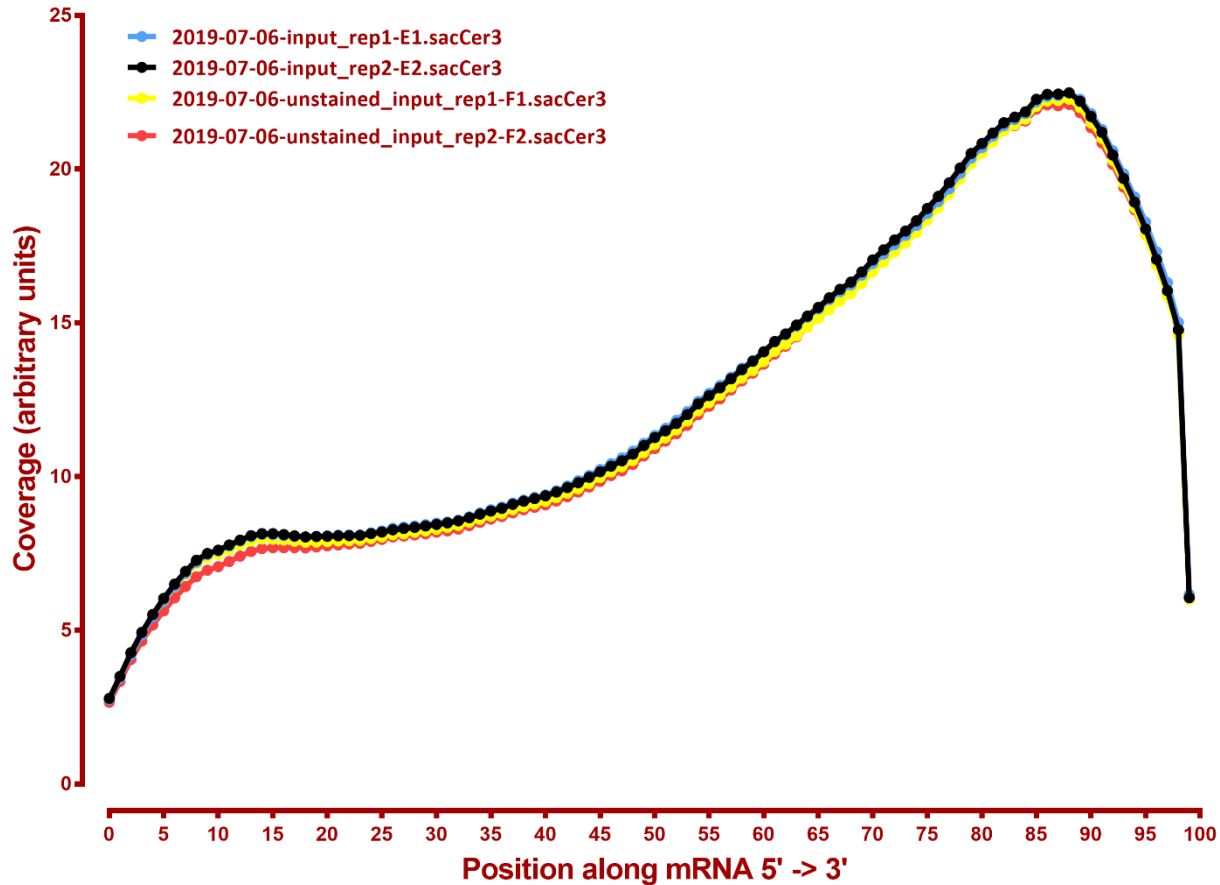
## Coverage of genes; >1000bp, sacCer3



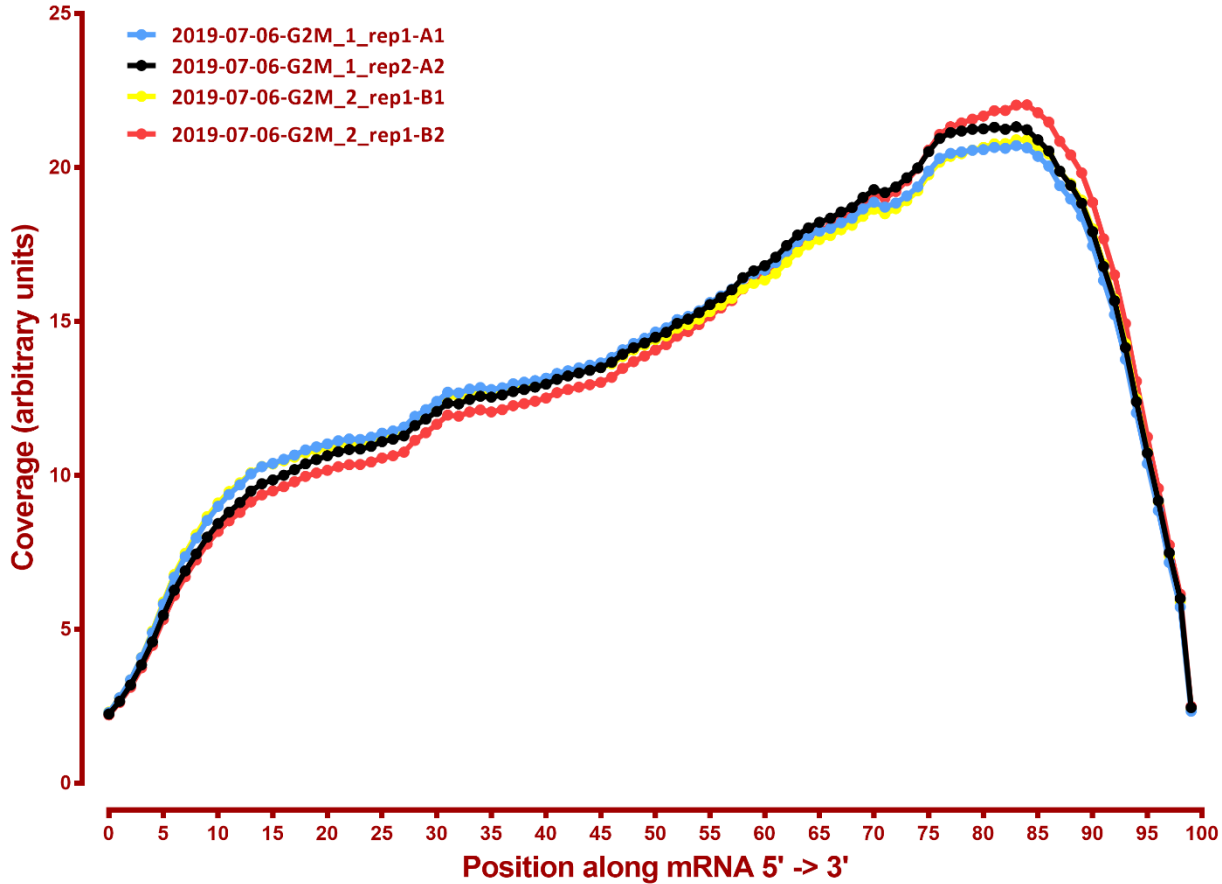
## Coverage of genes; >1000bp, sacCer3



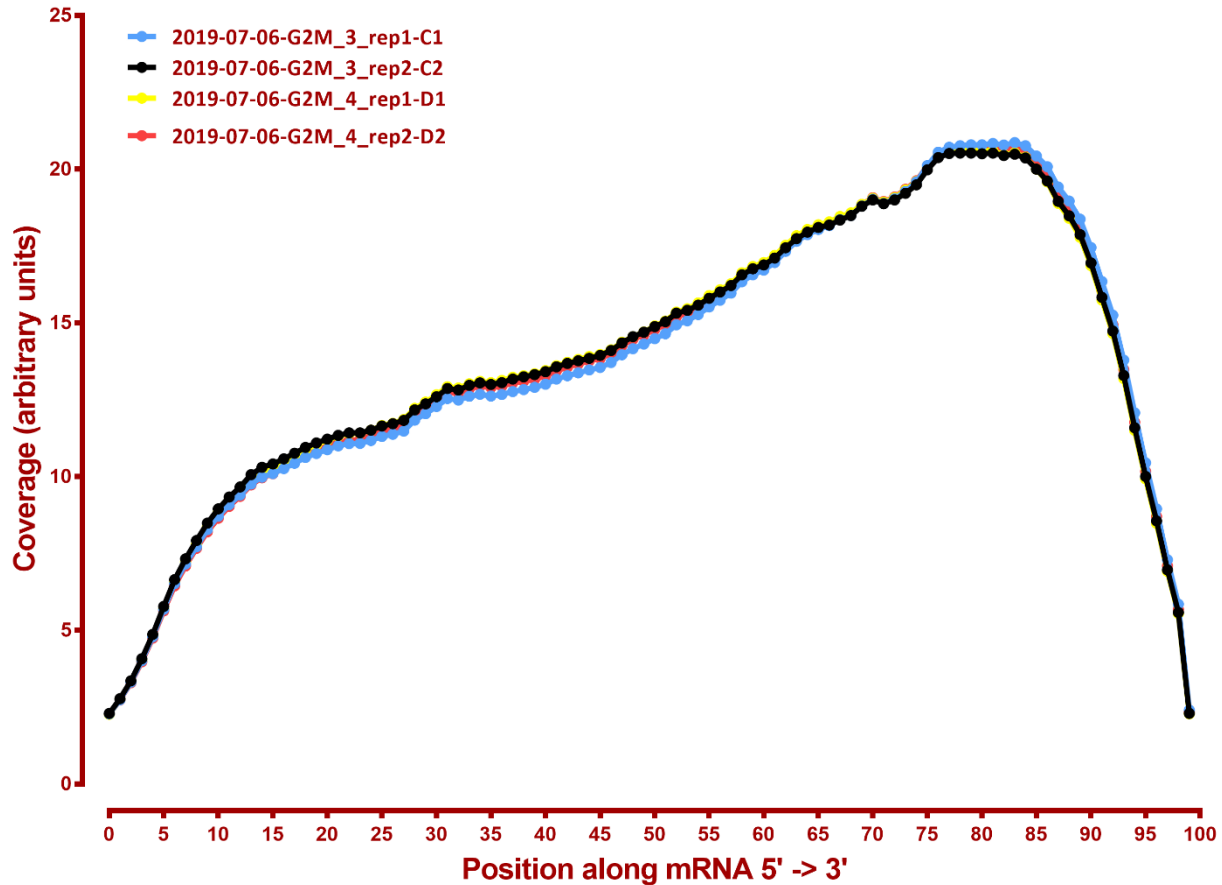
## Coverage of genes; >1000bp, sacCer3



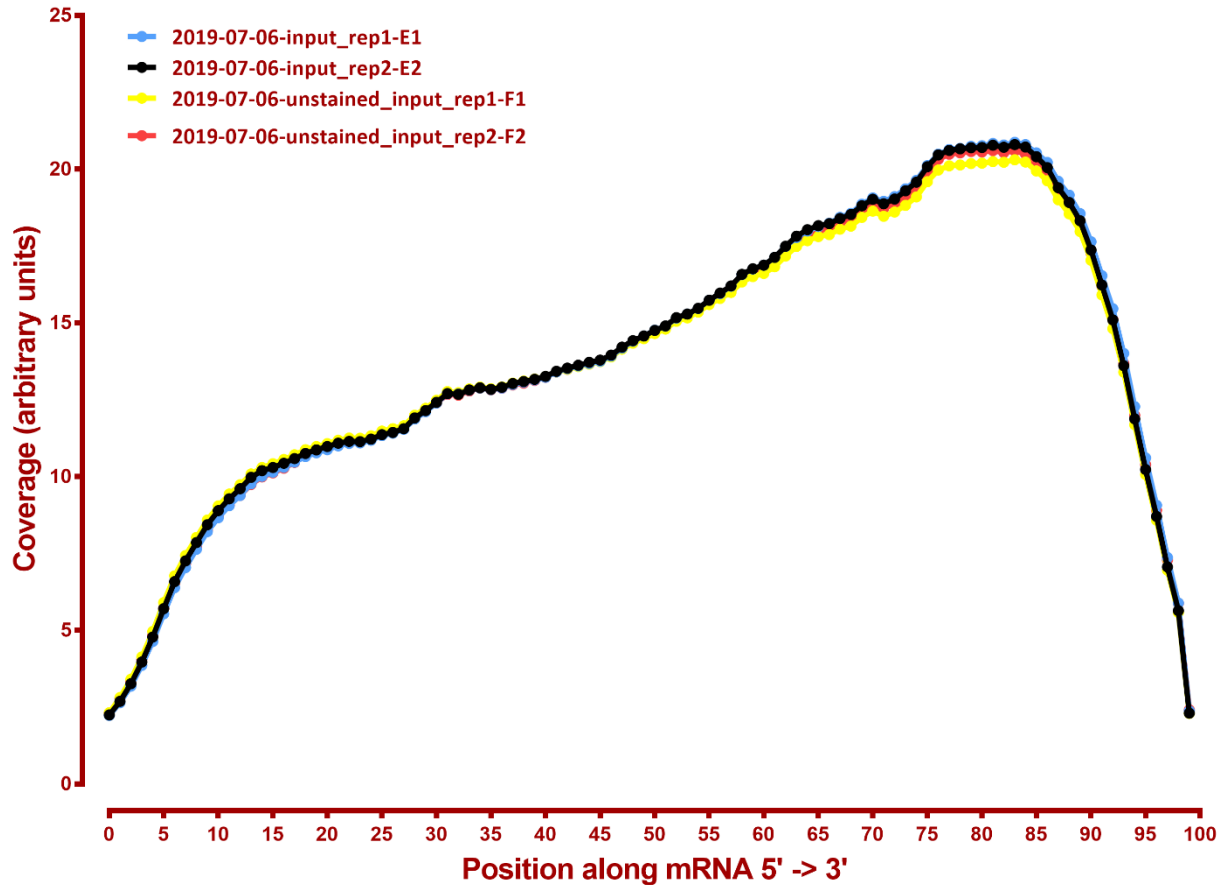
## Coverage of genes; >1000bp, *S.pombe*



## Coverage of genes; >1000bp, *S.pombe*



## Coverage of genes; >1000bp, *S.pombe*



Number differential genes, sacCer3

A	B	p-adj		p-val	
		up in B vs A	down in B vs A	up in B vs A	down in B vs A
G2M_1	G2M_2	548	417	898	741
G2M_1	G2M_3	1,086	984	1,334	1,224
G2M_1	G2M_4	1,330	1,242	1,527	1,439
G2M_1	input	987	919	1,226	1,181
G2M_1	unstained_input	987	906	1,239	1,186
G2M_2	G2M_3	428	416	723	749
G2M_2	G2M_4	774	728	1,071	1,046
G2M_2	input	484	347	793	706
G2M_2	unstained_input	510	390	770	737
G2M_3	G2M_4	239	168	519	431
G2M_3	input	432	367	735	718
G2M_3	unstained_input	382	324	665	678
G2M_4	input	503	473	783	812
G2M_4	unstained_input	486	499	768	818
input	unstained_input	2	6	223	222

Number differential genes, *S. pombe*

A	B	p-adj		p-val	
		up in B vs A	down in B vs A	up in B vs A	down in B vs A
G2M_1	G2M_2	8	6	220	205
G2M_1	G2M_3	1	3	109	165
G2M_1	G2M_4	6	5	196	233
G2M_1	input	3	6	223	218
G2M_1	unstained_input	3	6	230	197
G2M_2	G2M_3	8	20	256	260
G2M_2	G2M_4	17	40	339	352
G2M_2	input	25	27	327	297
G2M_2	unstained_input	12	19	322	311
G2M_3	G2M_4	2	4	146	191
G2M_3	input	1	1	231	206
G2M_3	unstained_input	5	3	201	197
G2M_4	input	7	4	229	220
G2M_4	unstained_input	17	8	242	201
input	unstained_input	10	20	241	270