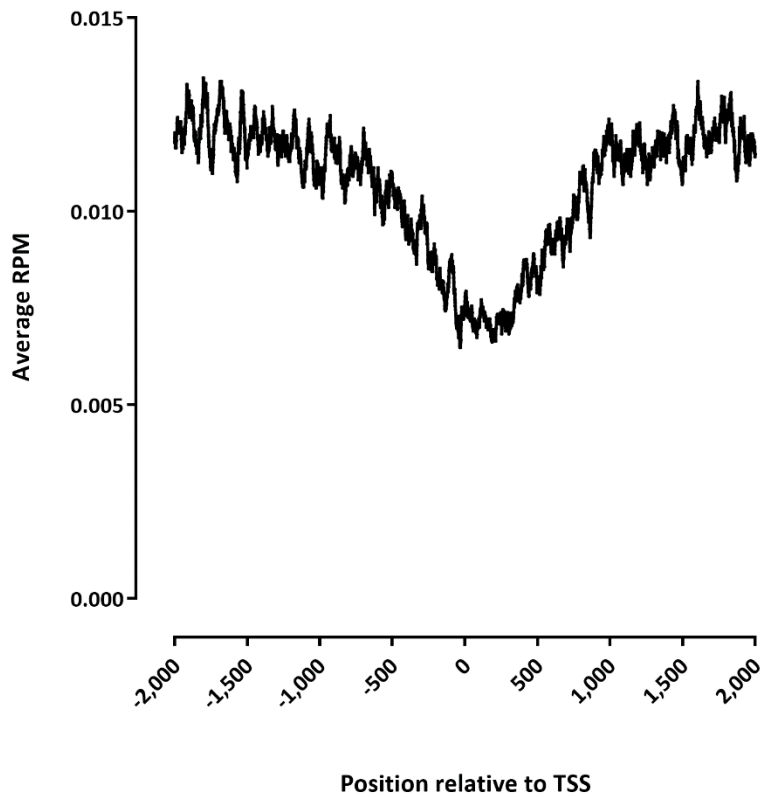


Dataset stats

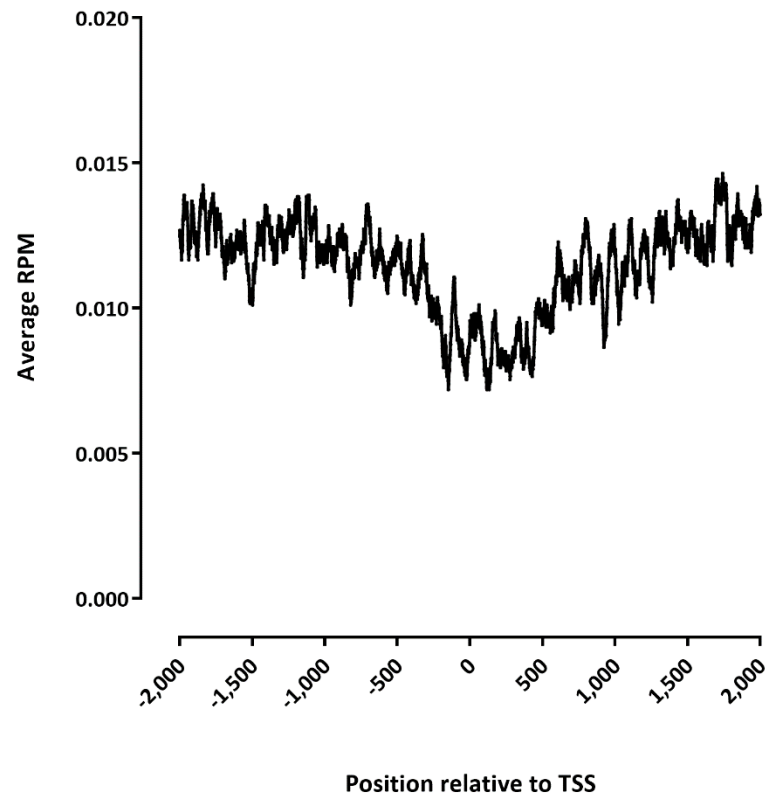
Species	#	Raw fragments	Read Length	Unique	Multi	Unque dedup	Unique Alignment fraction	Complexity	TSS score
<i>Homo sapiens</i> hg38	L1762-GBM39-KAS-Jack_kethoxal-rep1	3,389,129	2x36	3,662,856		1,221,726	0.54	0.33	0.62
<i>Homo sapiens</i> hg38	L1763-GBM39-KAS-Jack_kethoxal-rep2	1,520,677	2x36	1,687,358		574,822	0.55	0.34	0.70
<i>Homo sapiens</i> hg38	L1764-GBM39-KAS-Greenleaf_kethoxal-rep1	8,418,463	2x36	13,783,174		12,292,404	0.82	0.88	2.04
<i>Homo sapiens</i> hg38	L1765-GBM39-KAS-Greenleaf_kethoxal-rep2	13,249,723	2x36	21,664,954		16,376,444	0.82	0.74	2.12
<i>Homo sapiens</i> hg38	L1766-GBM39_HSR-KAS-Jack_kethoxal-rep1	5,900,332	2x36	3,645,348		1,352,816	0.31	0.37	0.68
<i>Homo sapiens</i> hg38	L1767-GBM39_HSR-KAS-Jack_kethoxal-rep2	1,965,446	2x36	1,624,318		500,490	0.41	0.30	0.67
<i>Homo sapiens</i> hg38	L1768-GBM39_HSR-KAS-Greenleaf_kethoxal-rep1	8,891,210	2x36	14,649,280		13,638,366	0.82	0.92	2.10
<i>Homo sapiens</i> hg38	L1769-GBM39_HSR-KAS-Greenleaf_kethoxal-rep2	15,679,226	2x36	25,756,430		23,700,430	0.82	0.90	2.48
<i>Homo sapiens</i> hg38	L1770-GBM39-Input-Jack_kethoxal-rep1	15,083,477	2x36	23,910,544		23,667,598	0.79	0.98	1.09
<i>Homo sapiens</i> hg38	L1771-GBM39-Input-Jack_kethoxal-rep2	10,515,702	2x36	16,708,510		16,525,300	0.79	0.98	1.17
<i>Homo sapiens</i> hg38	L1772-GBM39-Input-Greenleaf_kethoxal-rep1	11,918,772	2x36	18,992,618		18,780,816	0.80	0.98	1.01
<i>Homo sapiens</i> hg38	L1773-GBM39-Input-Greenleaf_kethoxal-rep2	16,751,112	2x36	26,316,280		25,976,122	0.79	0.98	1.00
<i>Homo sapiens</i> hg38	L1774-GBM39_HSR-Input-Jack_kethoxal-rep1	12,644,431	2x36	20,284,376		20,100,560	0.80	0.98	1.14
<i>Homo sapiens</i> hg38	L1775-GBM39_HSR-Input-Jack_kethoxal-rep2	17,680,337	2x36	28,160,266		27,893,160	0.80	0.98	1.11
<i>Homo sapiens</i> hg38	L1776-GBM39_HSR-Input-Greenleaf_kethoxal-rep1	22,628,064	2x36	36,094,480		35,768,800	0.80	0.98	1.05
<i>Homo sapiens</i> hg38	L1777-GBM39_HSR-Input-Greenleaf_kethoxal-rep2	105,549,205	2x36	167,078,834		165,303,228	0.79	0.97	1.18

Note: optimal TSS ratios are usually in the ≥ 3 range

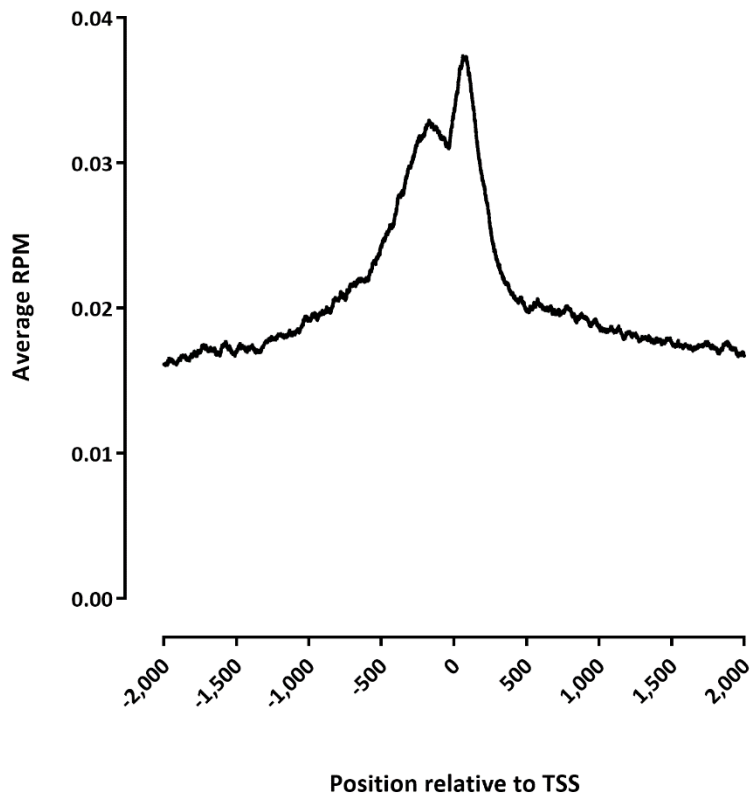
L1762-GBM39-KAS-Jack_kethoxal-rep1



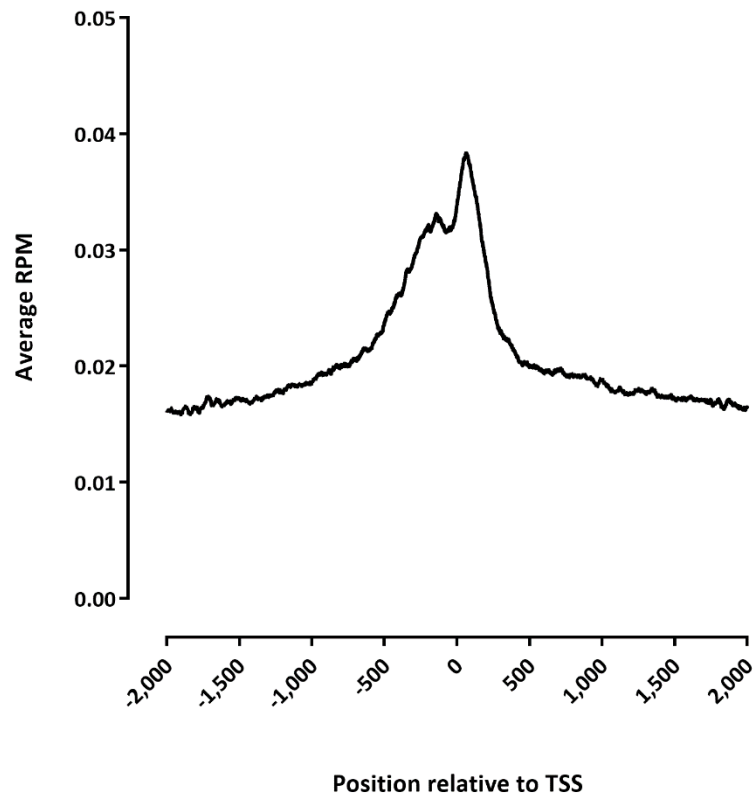
L1763-GBM39-KAS-Jack_kethoxal-rep2

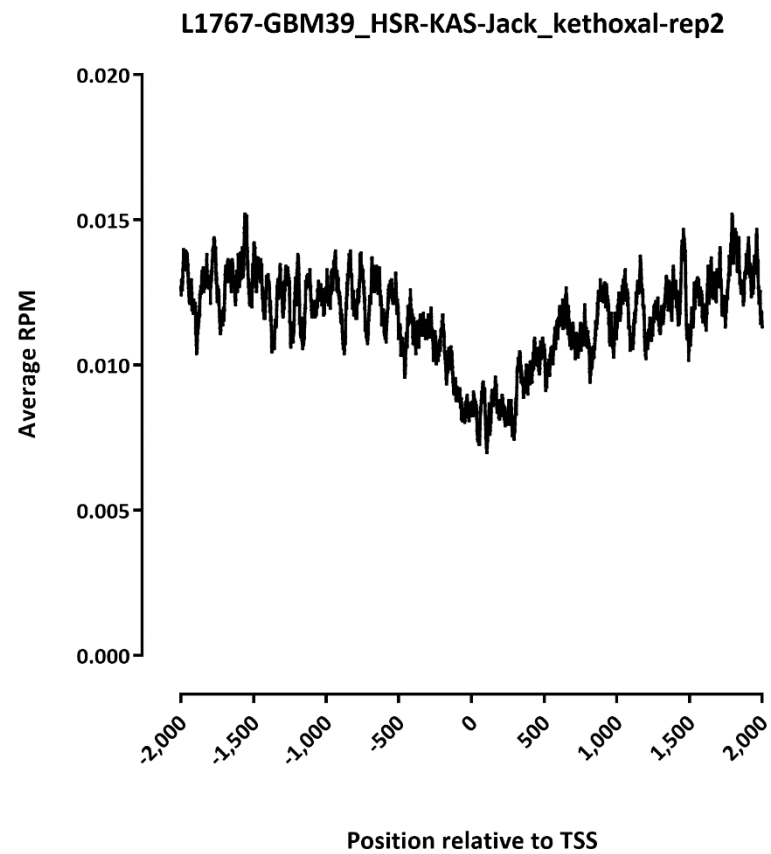
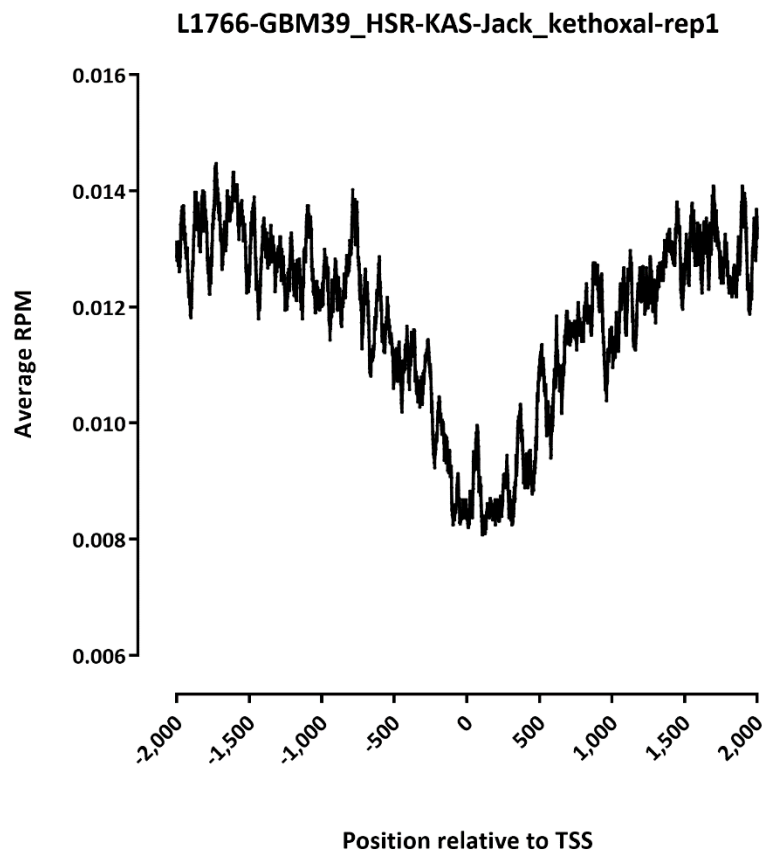


L1764-GBM39-KAS-Greenleaf_kethoxal-rep1

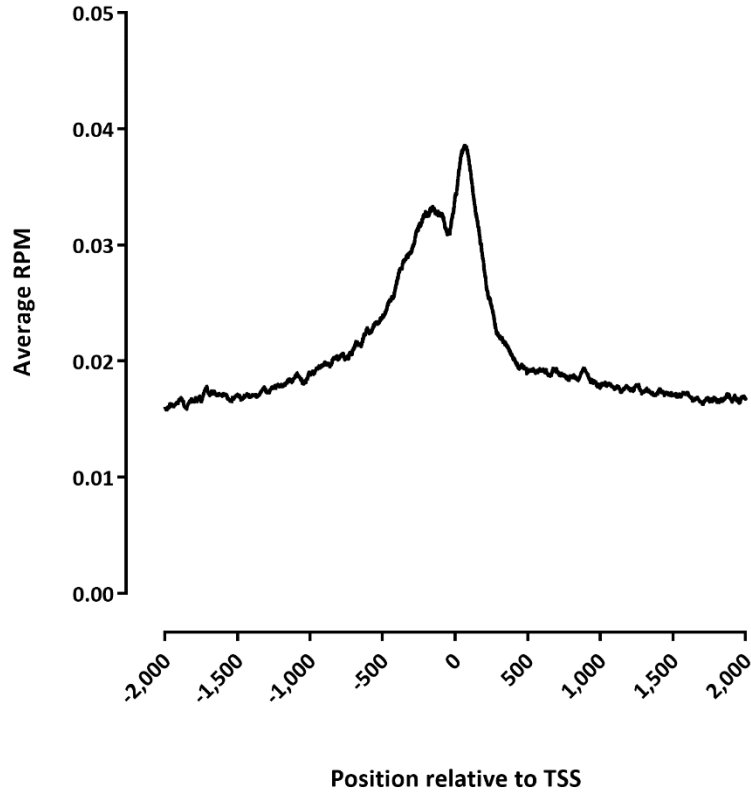


L1765-GBM39-KAS-Greenleaf_kethoxal-rep2

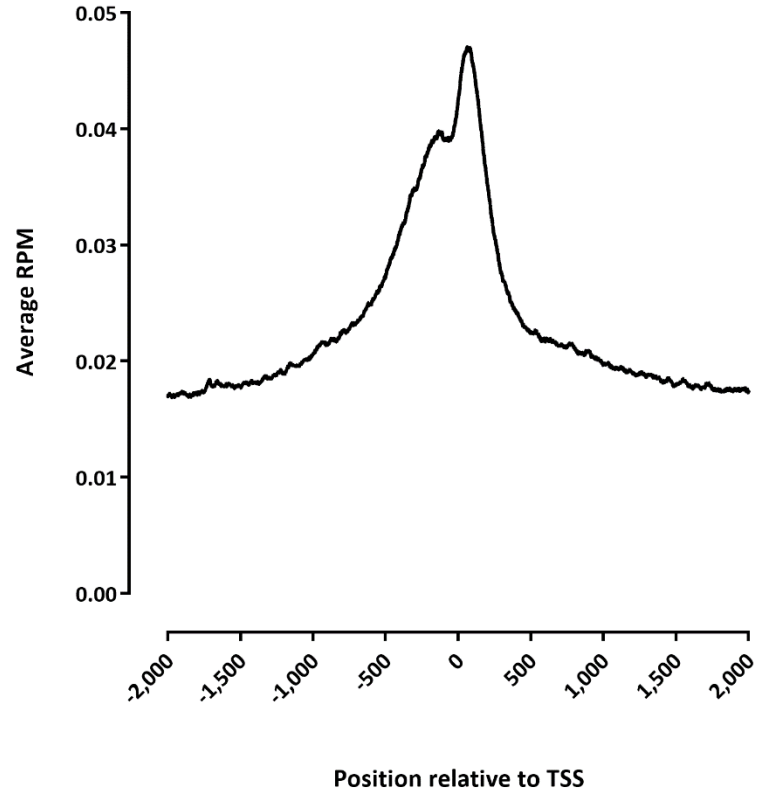




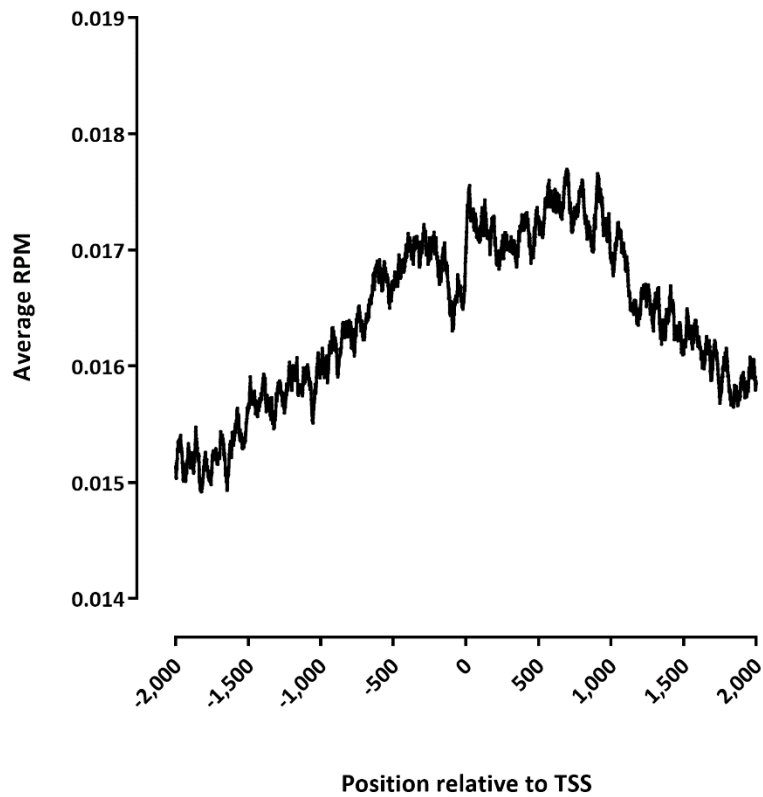
L1768-GBM39_HSR-KAS-Greenleaf_kethoxal-rep1



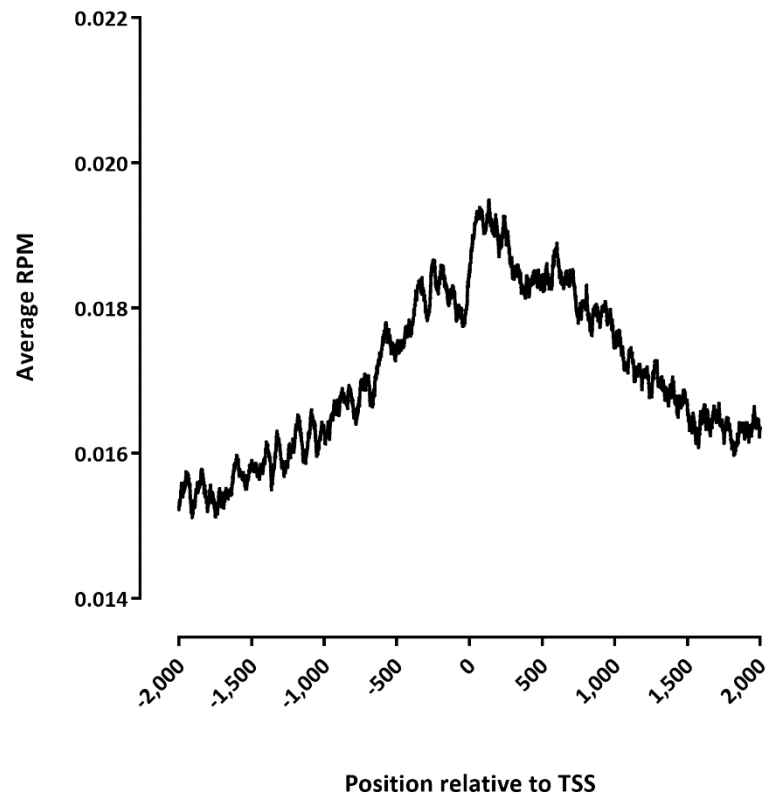
L1769-GBM39_HSR-KAS-Greenleaf_kethoxal-rep2



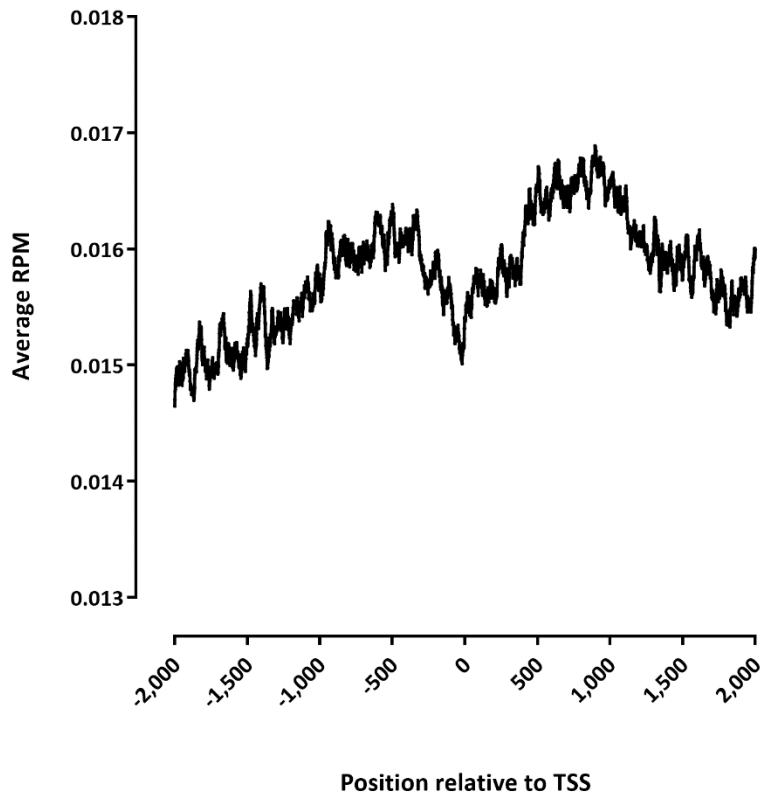
L1770-GBM39-Input-Jack_kethoxal-rep1



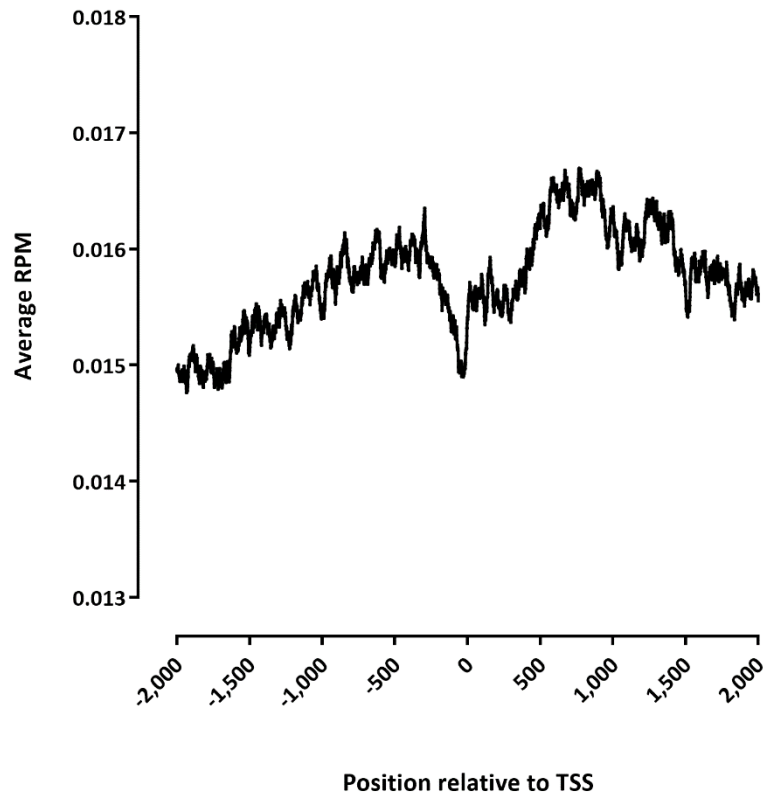
L1771-GBM39-Input-Jack_kethoxal-rep2



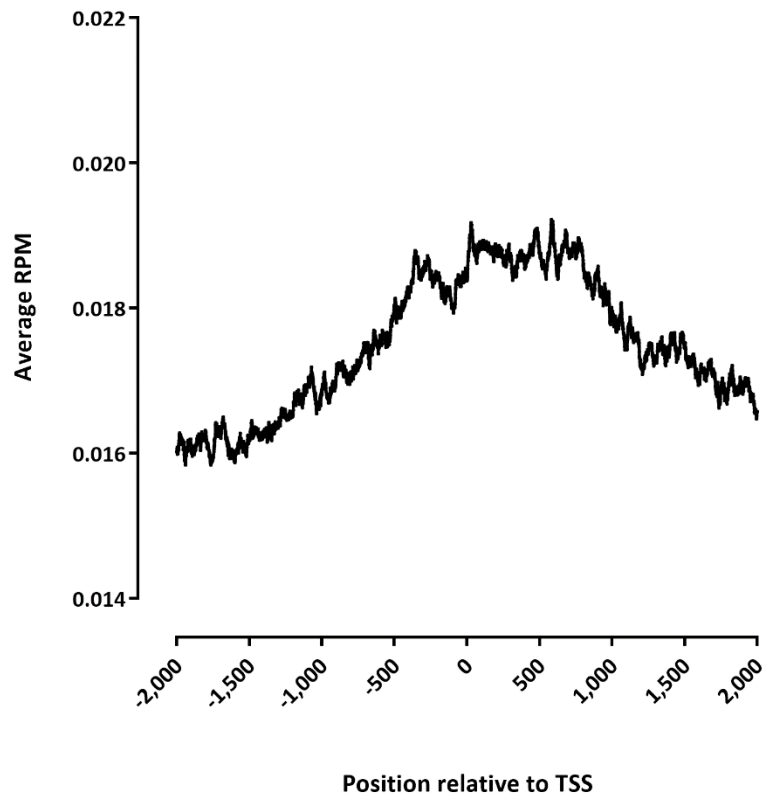
L1772-GBM39-Input-Greenleaf_kethoxal-rep1



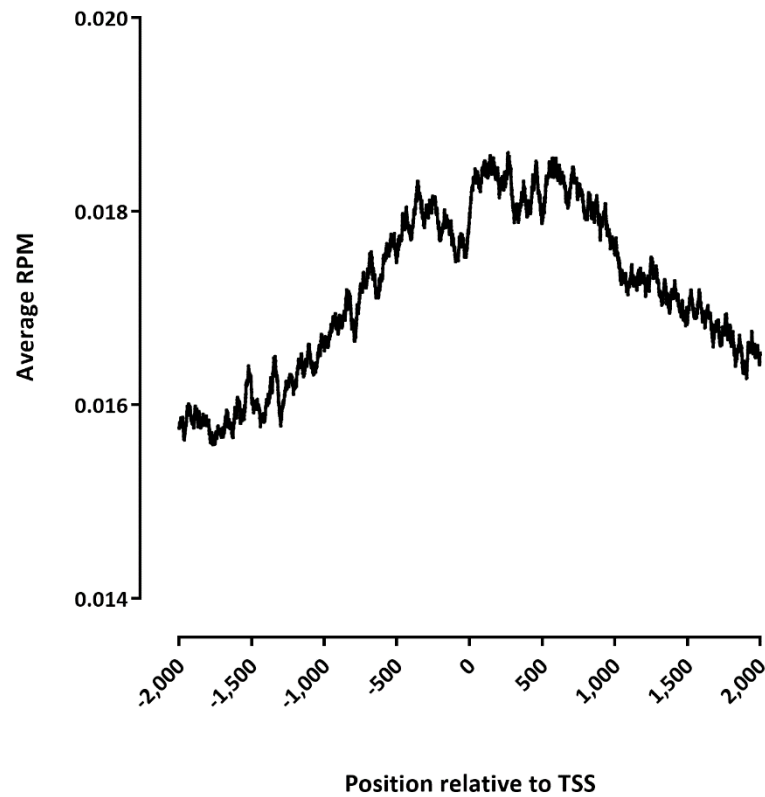
L1773-GBM39-Input-Greenleaf_kethoxal-rep2



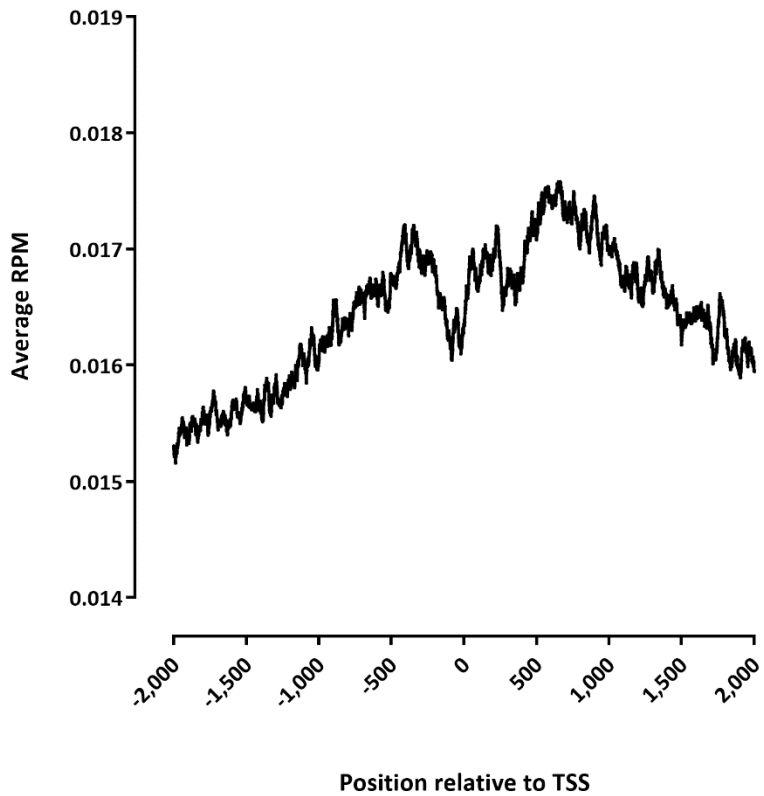
L1774-GBM39_HSR-Input-Jack_kethoxal-rep1



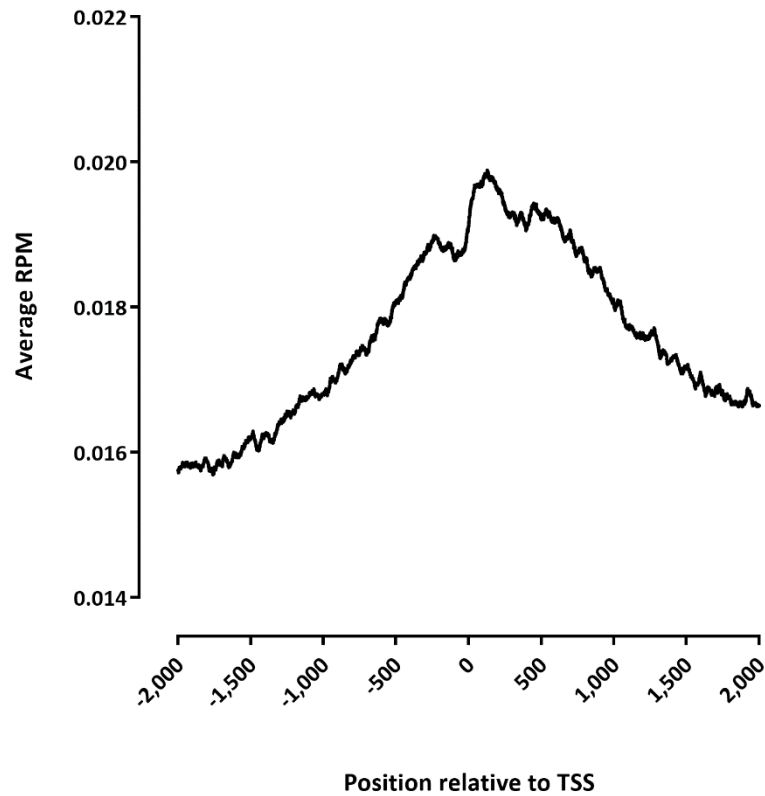
L1775-GBM39_HSR-Input-Jack_kethoxal-rep2



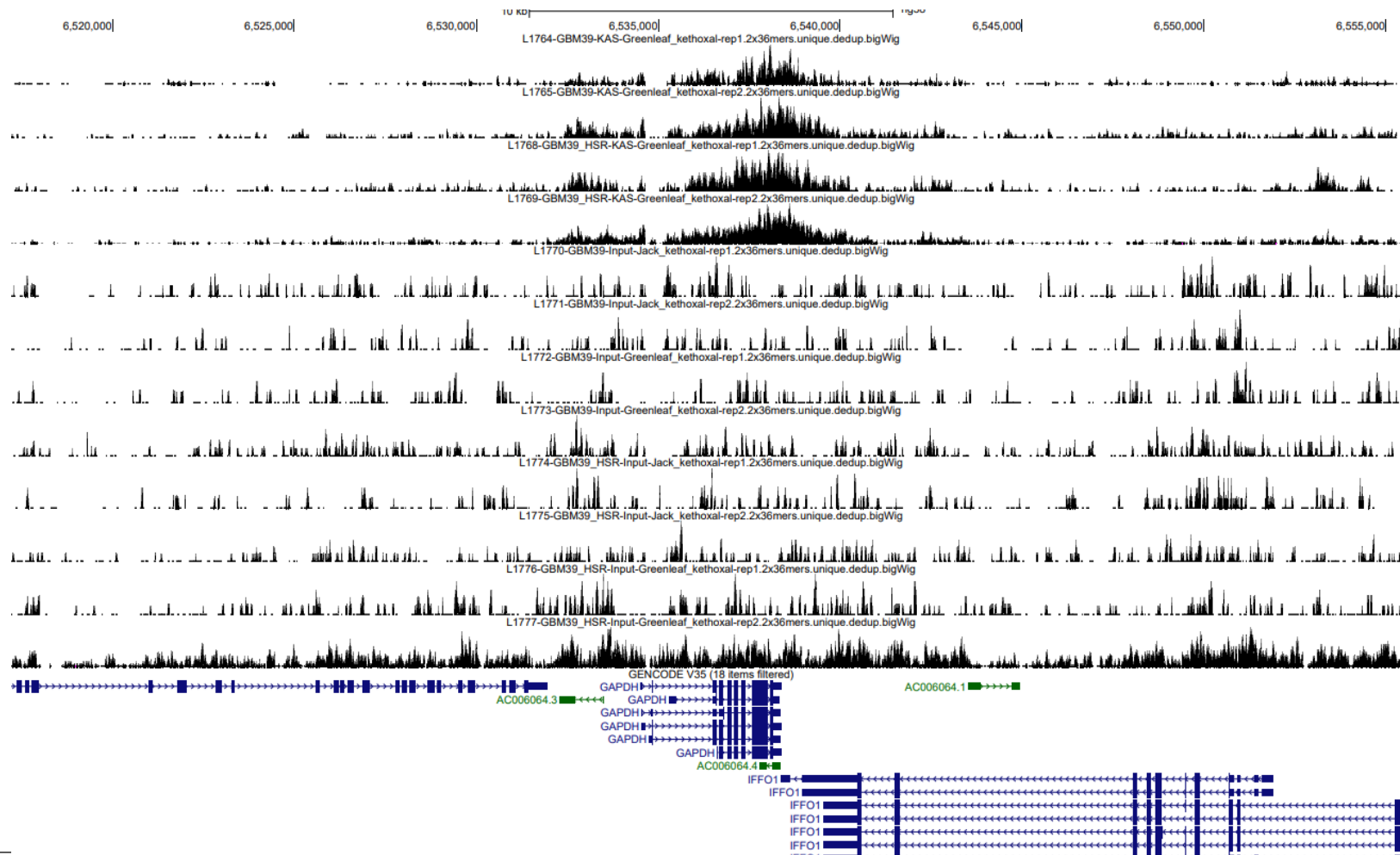
L1776-GBM39_HSR-Input-Greenleaf_kethoxal-rep1



L1777-GBM39_HSR-Input-Greenleaf_kethoxal-rep2



snapshots



snapshots

