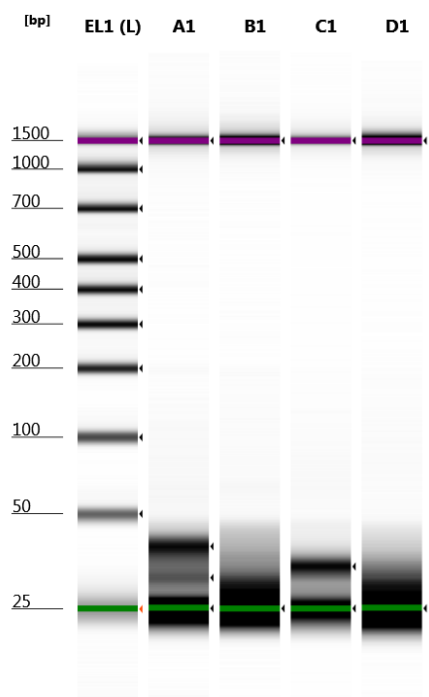


Filename: 2019-12-13 - 20.55.23.HSD1000

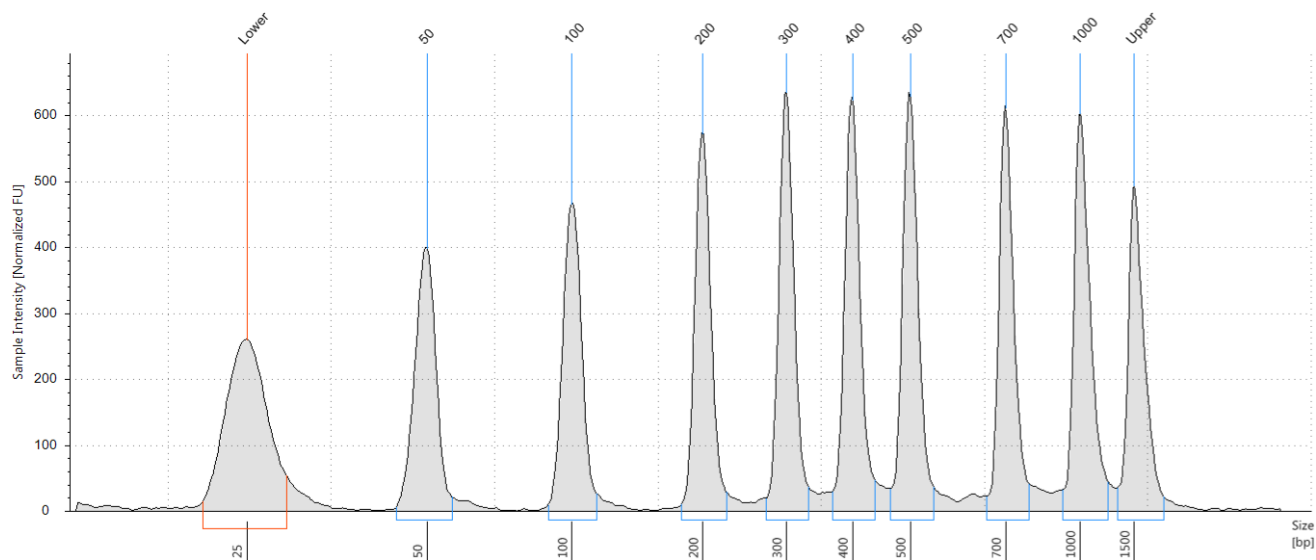


Default image (Contrast 50%), Image is Scaled to Sample

Sample Info

Well	Conc. [pg/ul]	Sample Description	Alert
EL1	2350	Electronic Ladder	
A1	659	L1269	
B1		L1270	
C1	631	L1271	
D1		L1272	

EL1: Electronic Ladder



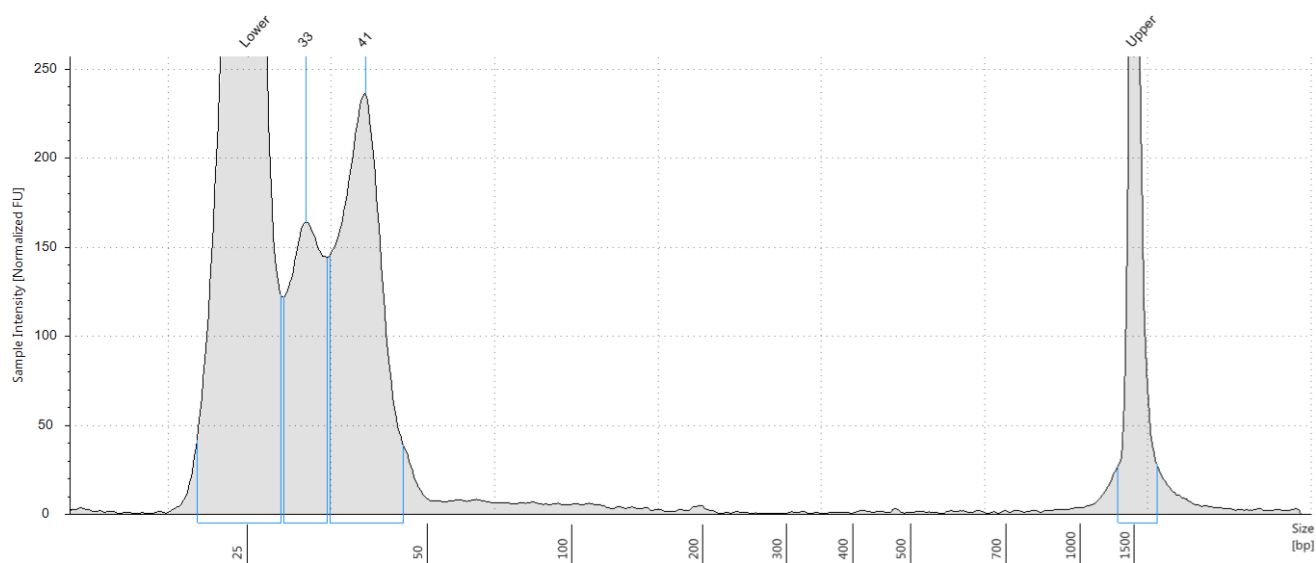
Sample Table

Well	Conc. [pg/ul]	Sample Description	Alert
EL1	2350	Electronic Ladder	

Peak Table

Size [bp]	Calibrated Conc. [pg/ul]	Assigned Conc. [pg/ul]	Peak Molarity [pmol/l]	% Integrated Area	Peak Comment	Observations
25	340	-	20900	-		Lower Marker
50	265	-	8160	11.28		
100	278	-	4270	11.82		
200	290	-	2230	12.32		
300	304	-	1560	12.95		
400	306	-	1180	13.00		
500	312	-	961	13.29		
700	286	-	629	12.19		
1000	309	-	476	13.15		
1500	250	250	256	-		Upper Marker

A1: L1269



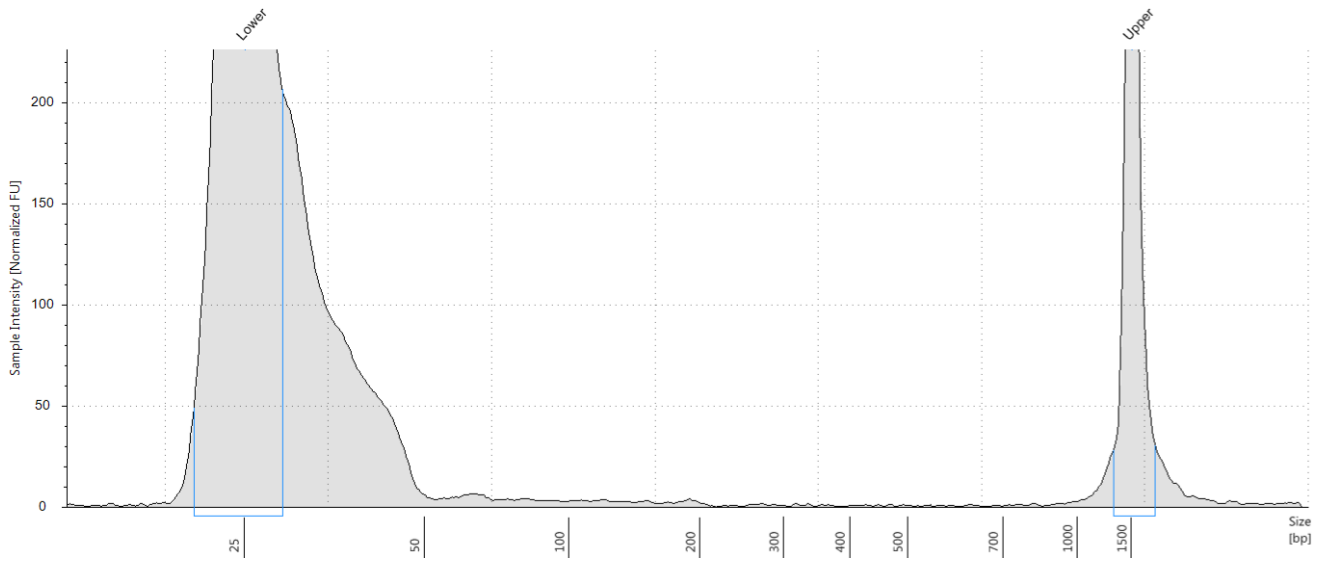
Sample Table

Well	Conc. [pg/ul]	Sample Description	Alert
A1	659	L1269	

Peak Table

Size [bp]	Calibrated Conc. [pg/ul]	Assigned Conc. [pg/ul]	Peak Molarity [pmol/l]	% Integrated Area	Peak Comment	Observations
25	967	-	59500	-		Lower Marker
33	241	-	11200	36.54		
41	418	-	15600	63.46		
1500	250	250	256	-		Upper Marker

B1: L1270



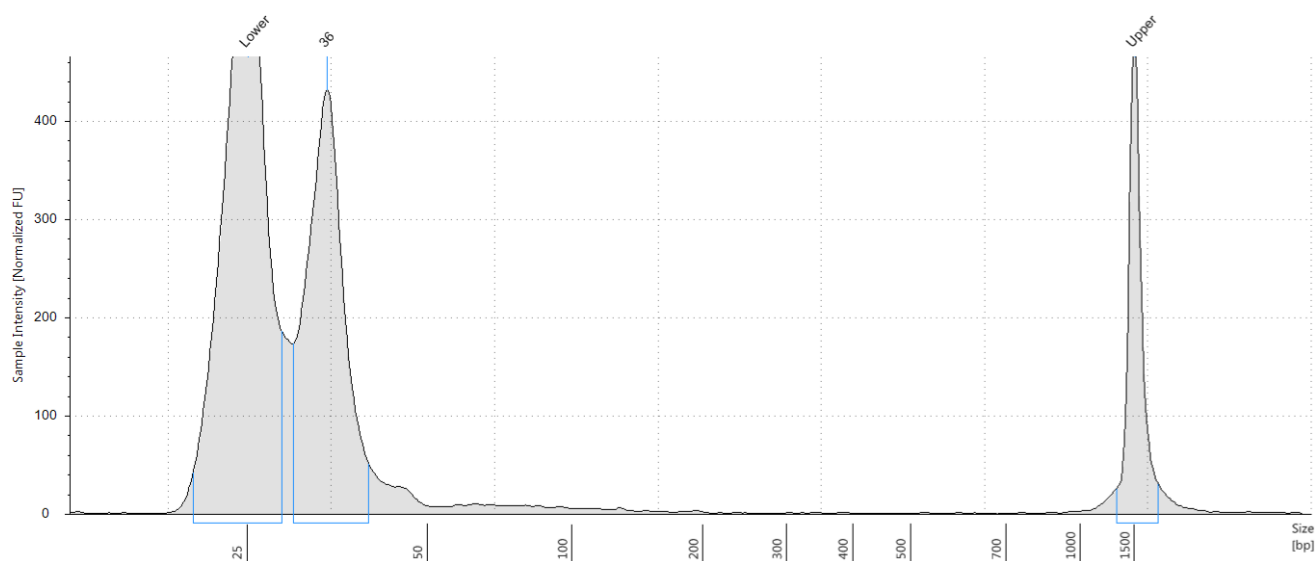
Sample Table

Well	Conc. [pg/ul]	Sample Description	Alert
B1		L1270	

Peak Table

Size [bp]	Calibrated Conc. [pg/ul]	Assigned Conc. [pg/ul]	Peak Molarity [pmol/l]	% Integrated Area	Peak Comment	Observations
25	1110	-	68200	-		Lower Marker
1500	250	250	256	-		Upper Marker

C1: L1271



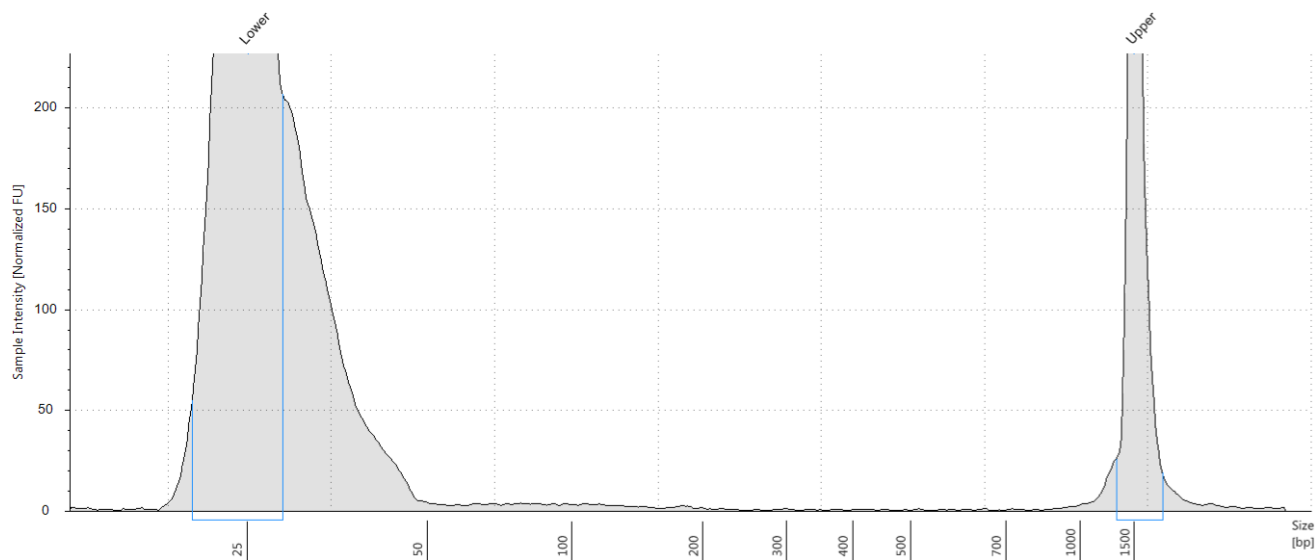
Sample Table

Well	Conc. [pg/ul]	Sample Description	Alert
C1	631	L1271	

Peak Table

Size [bp]	Calibrated Conc. [pg/ul]	Assigned Conc. [pg/ul]	Peak Molarity [pmol/l]	% Integrated Area	Peak Comment	Observations
25	1000	-	61700	-		Lower Marker
36	631	-	26900	100.00		
1500	250	250	256	-		Upper Marker

D1: L1272



Sample Table

Well	Conc. [pg/ul]	Sample Description	Alert
D1		L1272	

Peak Table

Size [bp]	Calibrated Conc. [pg/ul]	Assigned Conc. [pg/ul]	Peak Molarity [pmol/l]	% Integrated Area	Peak Comment	Observations
25	1010	-	62300	-		Lower Marker
1500	250	250	256	-		Upper Marker