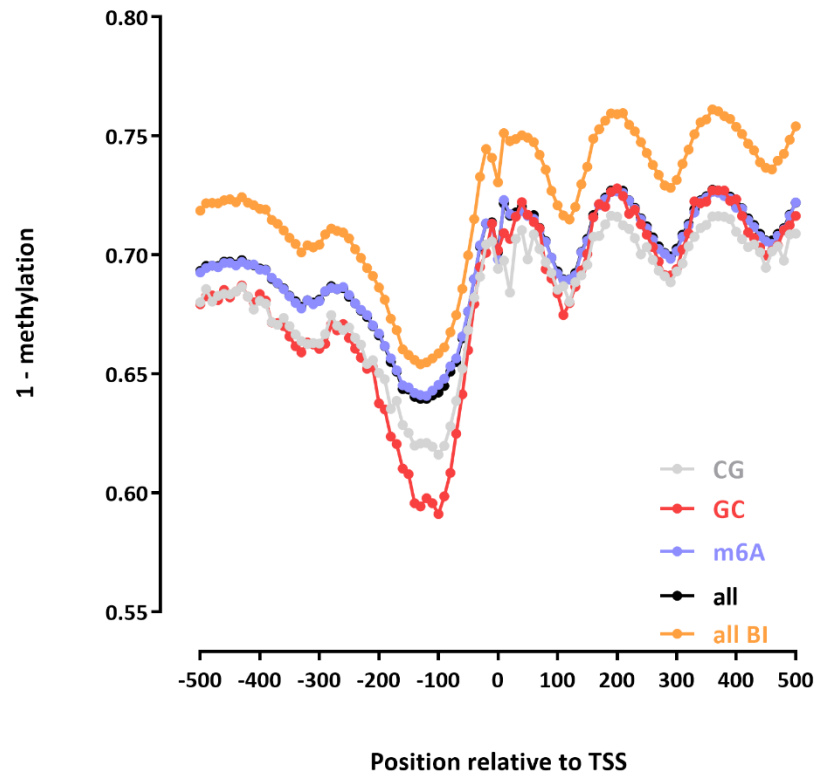


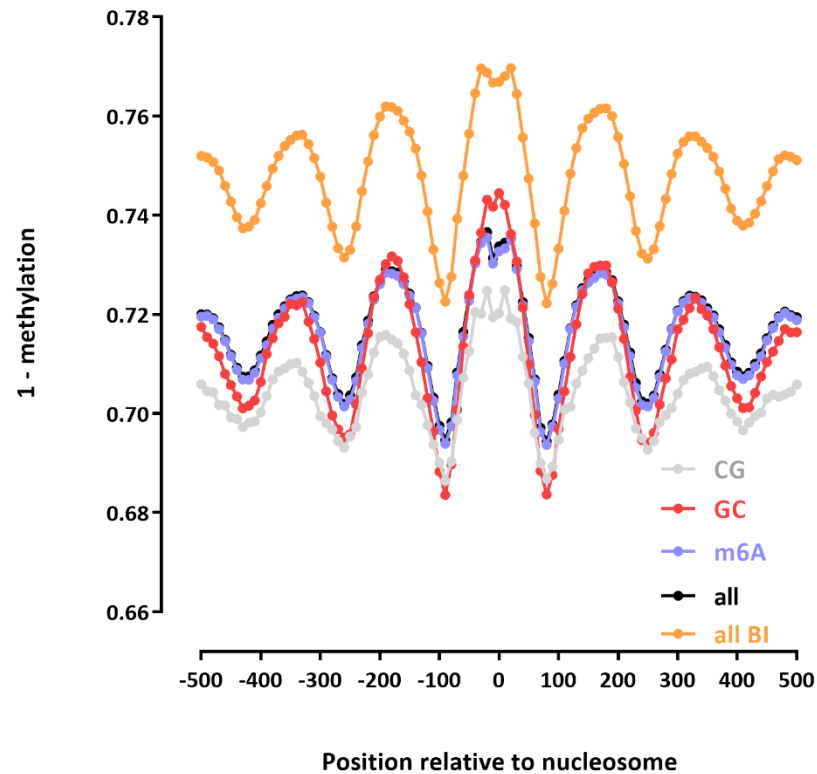
# Mapping stats

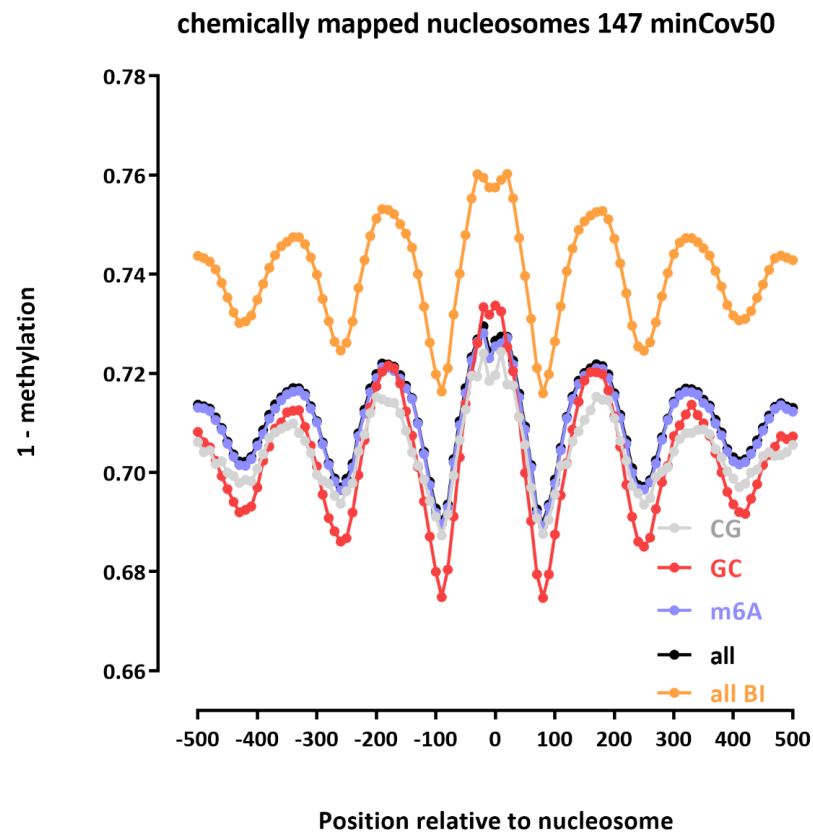
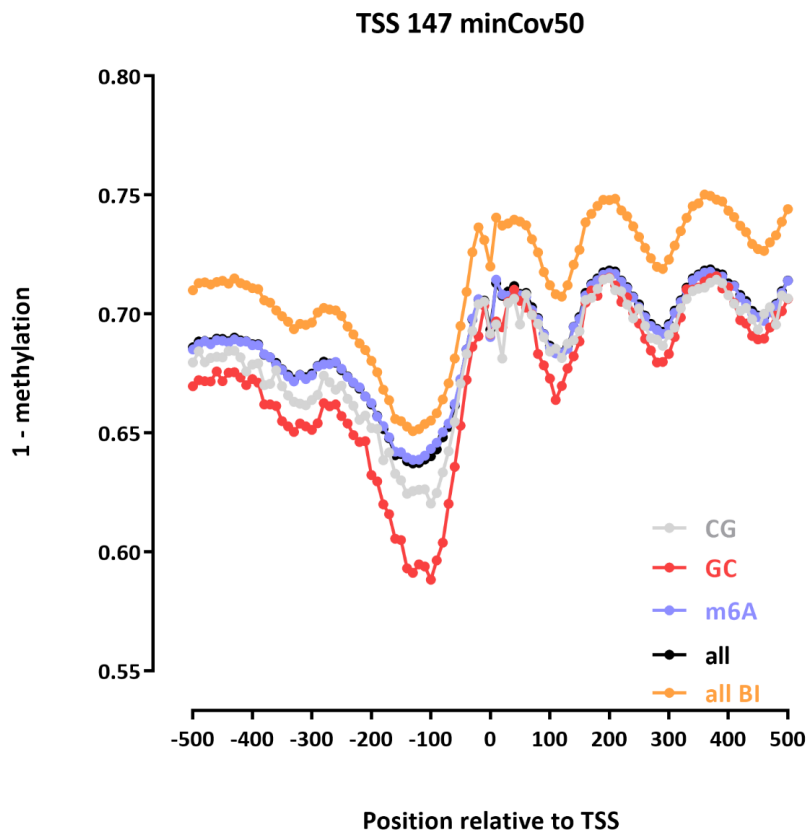
Species	Assay	#	Mapping	Base Contexts	Reads	Total Bases	Mean Read Length	Median Read Length
sacCer3	SMAC	2019_03_03-sacCer3-rDNA_146-SMAC	Tombo 1.3 denovo	CG-only	1,564,325	3,960,388,945	2,532	1,648
sacCer3	SMAC	2019_03_03-sacCer3-rDNA_146-SMAC	Tombo 1.3 denovo	GC-only	1,563,490	3,978,476,928	2,545	1,661
sacCer3	SMAC	2019_03_03-sacCer3-rDNA_146-SMAC	Tombo 1.3 denovo	m6A-only	1,567,640	4,066,653,958	2,594	1,709
sacCer3	SMAC	2019_03_03-sacCer3-rDNA_146-SMAC	Tombo 1.3 denovo	m6A-GC-CG-only	1,567,639	4,064,457,528	2,593	1,708
sacCer3	SMAC	2019_03_03-sacCer3-rDNA_147-SMAC	Tombo 1.3 denovo	CG-only	1,068,607	4,483,200,645	4,195	2,719
sacCer3	SMAC	2019_03_03-sacCer3-rDNA_147-SMAC	Tombo 1.3 denovo	GC-only	1,067,984	4,495,385,968	4,209	2,733
sacCer3	SMAC	2019_03_03-sacCer3-rDNA_147-SMAC	Tombo 1.3 denovo	m6A-only	1,071,454	4,559,848,857	4,256	2,776
sacCer3	SMAC	2019_03_03-sacCer3-rDNA_147-SMAC	Tombo 1.3 denovo	m6A-GC-CG-only	1,071,454	4,558,436,051	4,254	2,775

TSS 146 minCov50



chemically mapped nucleosomes 146 minCov50

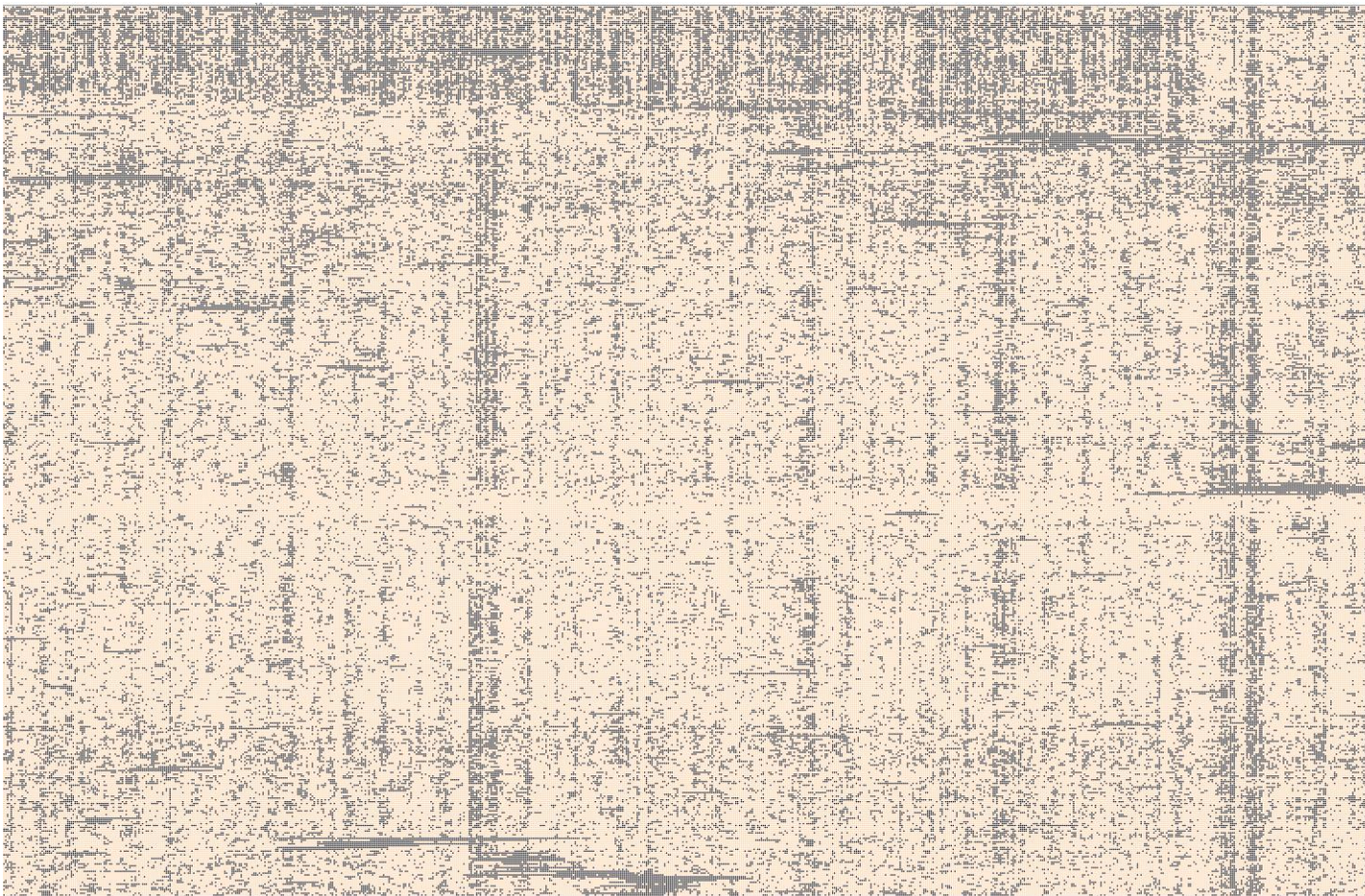




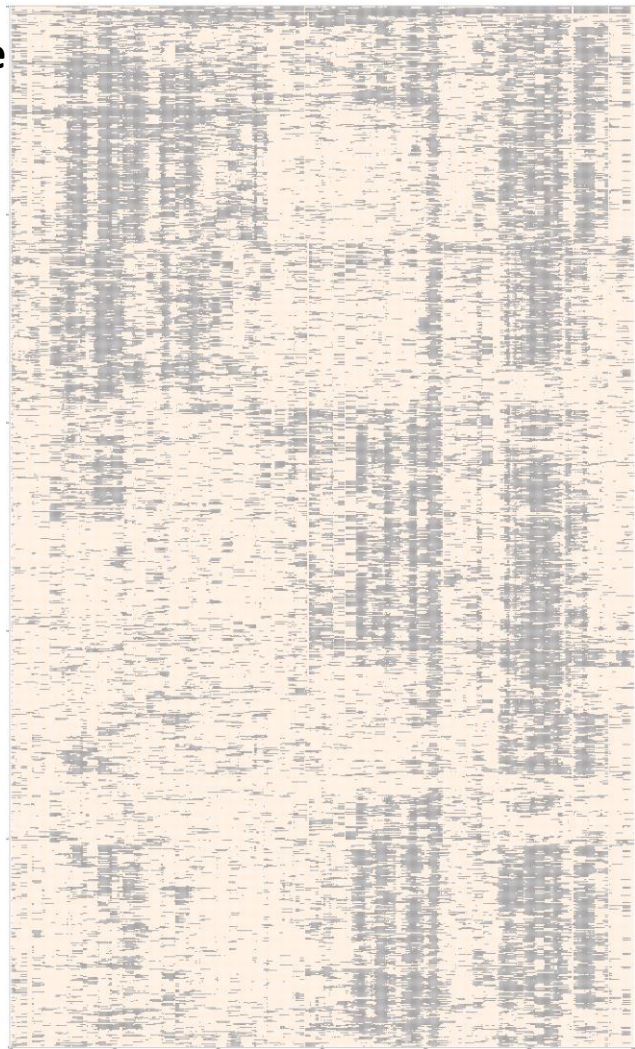
**146: chrXII:451525-459900 (RDN1), all reads**



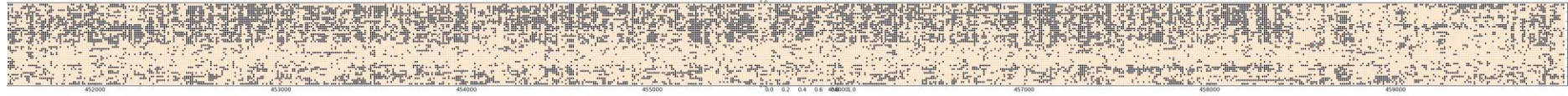
**146: chrXII:461000-468500 (RDN2), all reads**



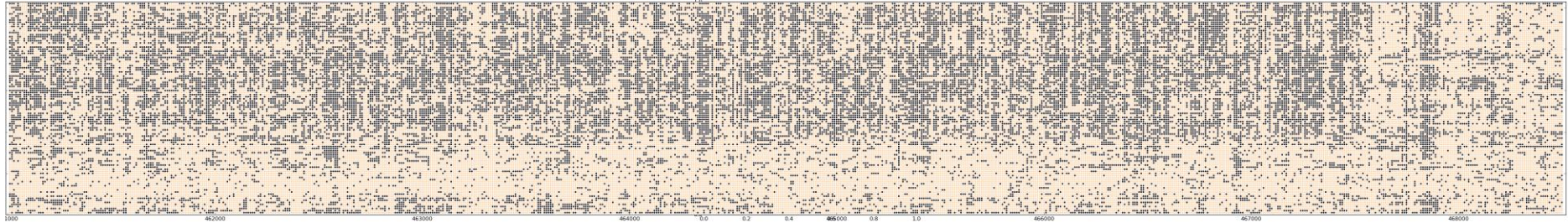
**146: chrXII:458200-458800, 1000 reads subsample**



147: chrXII:451525-459900 (RDN1), all reads



**147: chrXII:461000-468500 (RDN2), all reads**



**147: chrXII:458200-458800, 1000 reads subsample**

