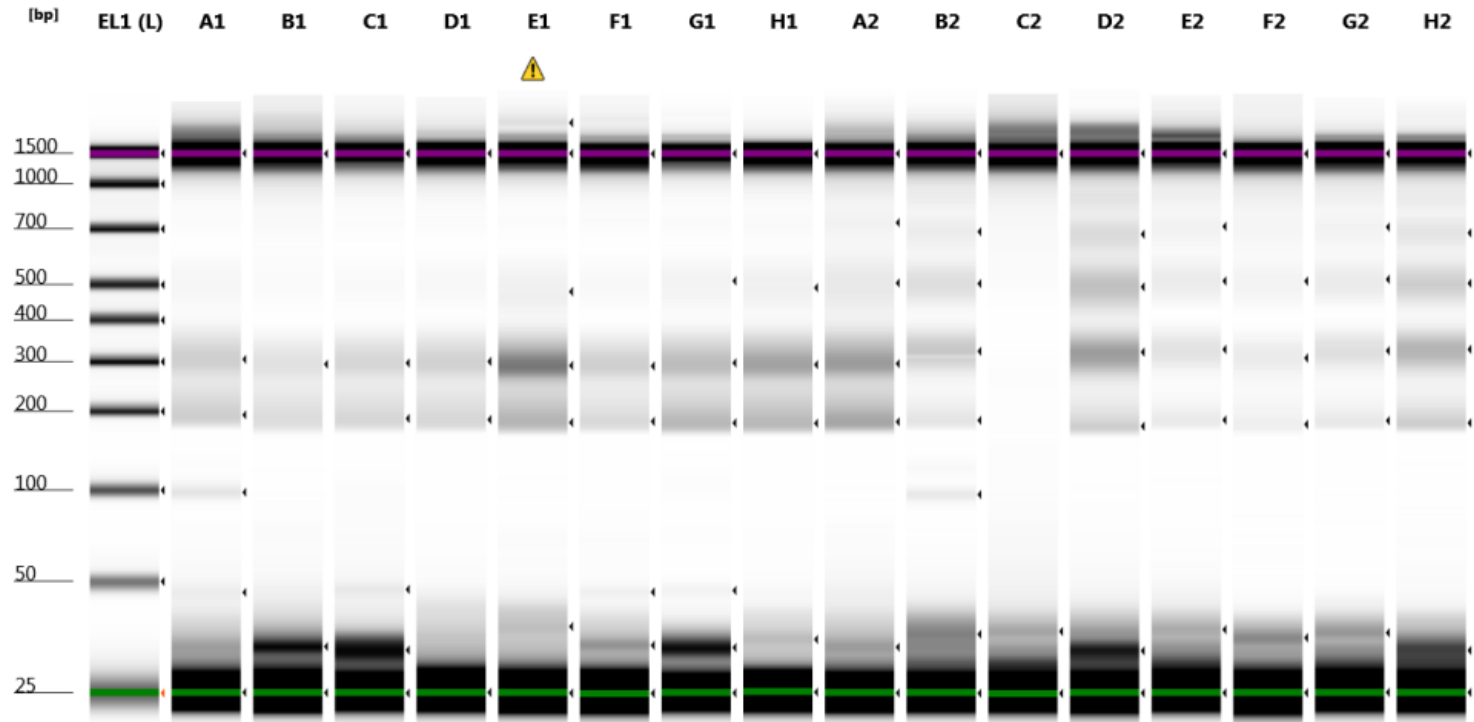


Libraries:

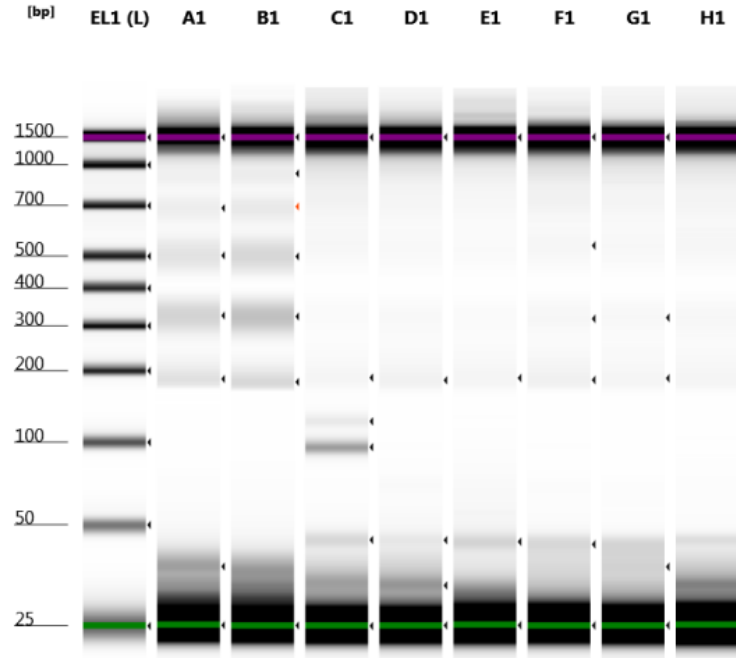
Library number	Name/Description	Indexes	Concentration (ng/ μ L)
L3922	AR14-UT-1	708+503	3.32
L3923	AR14-UT-2	710+503	4.06
L3924	AR14-UT-3	709+503	3.98
L3925	AR14-AS-1	711+503	3.22
L3926	AR14-AS-2	712+503	3.84
L3927	AR14-AS-3	713+503	2.84
L3928	AR14-HS-1	714+503	4.74
L3929	AR14-HS-2	715+503	4.48
L3930	AR14-HS-3	716+503	3.64
L3931	DC-SIGN-UT-1	708+504	3.52
L3932	DC-SIGN-UT-2	710+504	1.31
L3933	DC-SIGN-UT-3	709+504	4.30
L3934	DC-SIGN-AS-1	711+504	3.50
L3935	DC-SIGN-AS-2	713+504	3.06
L3936	DC-SIGN-AS-3	712+504	3.34
L3937	DC-SIGN-HS-1	714+504	4.66
L3938	DC-SIGN-HS-2	715+504	5.26
L3939	DC-SIGN-HS-3	716+504	4.82
L3940	THP_1_M2-UT-1	708+505	2.68
L3941	THP_1_M2-UT-2	710+505	1.70
L3942	THP_1_M2-UT-3	709+505	1.37
L3943	THP_1_M2-AS-1	711+505	2.46
L3944	THP_1_M2-AS-2	712+505	1.95
L3945	THP_1_M2-AS-3	713+505	2.20
L3946	THP_1_M2-HS-1	714+505	1.70
L3947	THP_1_M2-HS-2	715+505	3.92
L3948	THP_1_M2-HS-3	716+505	4.64

Libraries:

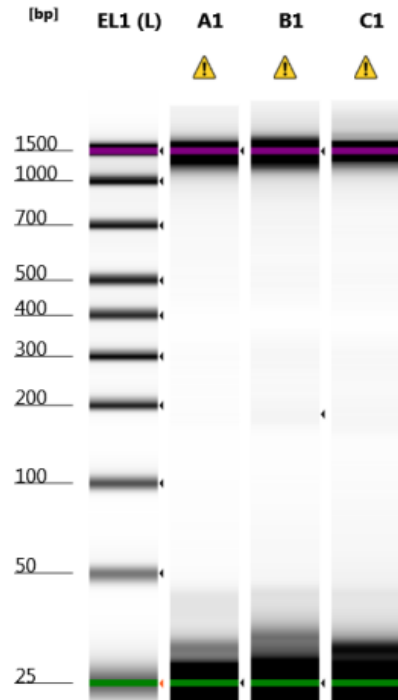
Filename: 2025-06-17 - 18.51.26.D1000



Filename: 2025-06-17 - 18.37.55.D1000



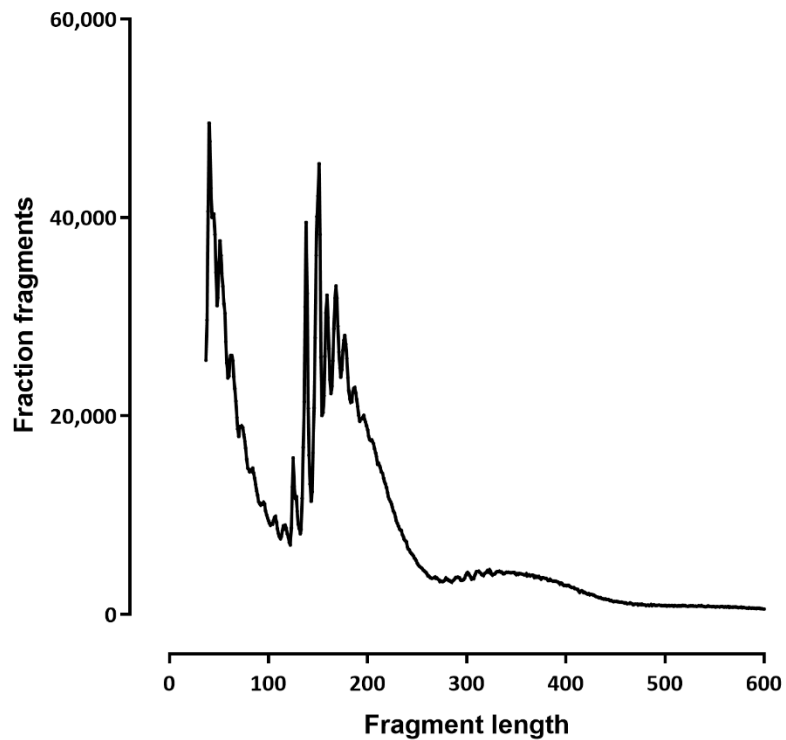
Filename: 2025-06-17 - 18.10.30.D1000



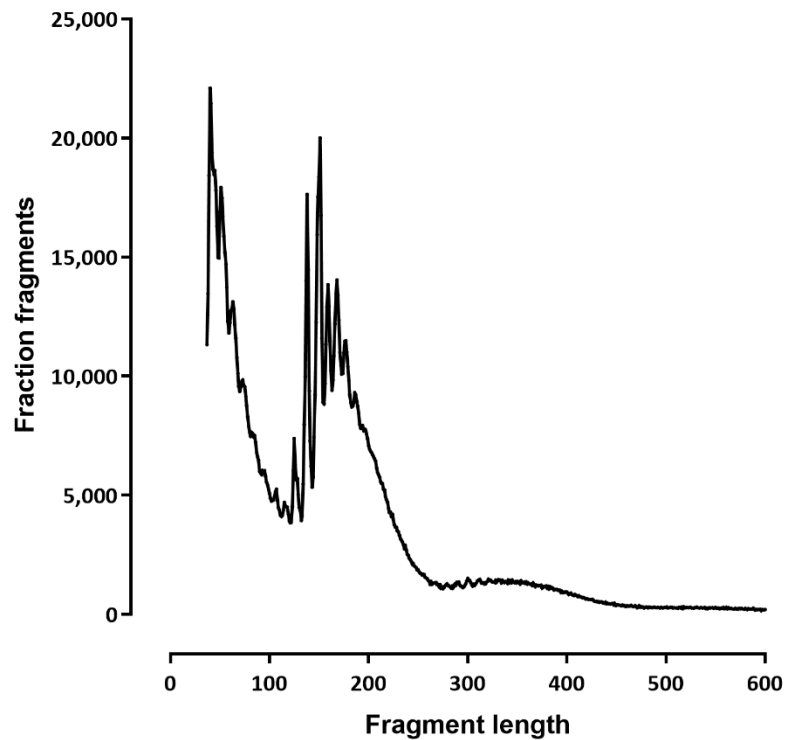
Dataset stats

Aligned against	Read Length	Library	Raw fragments	Unique non-chrM reads	Multi reads	Complexity	chrM reads	chrM fraction	Unique non-chrM reads after dedup	TSS ratio
Homo sapiens hg38-male	2x36	L3922-AR14-UT-1	9,641,932	12,870,822		0.70	6,041,552	0.32	9,680,278	9.58
Homo sapiens hg38-male	2x36	L3923-AR14-UT-2	4,056,201	5,337,286		0.71	2,671,288	0.33	4,140,848	10.94
Homo sapiens hg38-male	2x36	L3925-AR14-AS-1	6,591,520	8,980,638		0.74	3,827,654	0.30	7,089,322	9.58
Homo sapiens hg38-male	2x36	L3926-AR14-AS-2	11,078,709	15,762,790		0.77	5,247,174	0.25	12,815,466	7.47
Homo sapiens hg38-male	2x36	L3928-AR14-HS-1	10,190,450	13,638,806		0.75	5,208,490	0.28	10,872,194	8.82
Homo sapiens hg38-male	2x36	L3929-AR14-HS-2	9,815,235	13,673,044		0.77	4,811,032	0.26	11,108,612	8.28
Homo sapiens hg38-male	2x36	L3931-DC-SIGN-UT-1	8,378,026	13,182,494		0.85	2,387,276	0.15	11,708,240	10.61
Homo sapiens hg38-male	2x36	L3932-DC-SIGN-UT-2	7,394,705	11,701,394		0.87	1,881,262	0.14	10,608,510	9.31
Homo sapiens hg38-male	2x36	L3933-DC-SIGN-UT-3	6,720,842	10,646,864		0.44	1,716,288	0.14	9,198,792	8.90
Homo sapiens hg38-male	2x36	L3934-DC-SIGN-AS-1	20,031,700	31,129,644		0.40	7,073,872	0.19	24,338,430	10.07
Homo sapiens hg38-male	2x36	L3935-DC-SIGN-AS-2	10,352,079	16,106,598		0.81	3,634,828	0.18	13,651,116	11.87
Homo sapiens hg38-male	2x36	L3937-DC-SIGN-HS-1	17,351,106	27,002,616		0.43	4,847,064	0.15	22,424,000	9.29
Homo sapiens hg38-male	2x36	L3938-DC-SIGN-HS-2	10,822,452	16,728,172		0.42	3,438,772	0.17	13,775,366	10.61
Homo sapiens hg38-male	2x36	L3940-THP_1_M2-UT-1	3,581,386	6,011,492		0.45	521,168	0.08	5,269,174	13.33
Homo sapiens hg38-male	2x36	L3941-THP_1_M2-UT-2	9,182,650	14,520,464		0.43	1,883,360	0.11	12,166,998	7.16
Homo sapiens hg38-male	2x36	L3943-THP_1_M2-AS-1	4,075,790	6,423,784		0.43	1,160,752	0.15	5,412,504	9.60
Homo sapiens hg38-male	2x36	L3945-THP_1_M2-AS-3	4,788,152	7,577,648		0.42	1,471,344	0.16	6,179,958	11.53
Homo sapiens hg38-male	2x36	L3947-THP_1_M2-HS-2	16,422,574	24,972,920		0.38	6,662,916	0.21	18,140,248	9.31
Homo sapiens hg38-male	2x36	L3948-THP_1_M2-HS-3	14,114,442	21,347,124		0.38	6,129,560	0.22	15,435,326	9.45

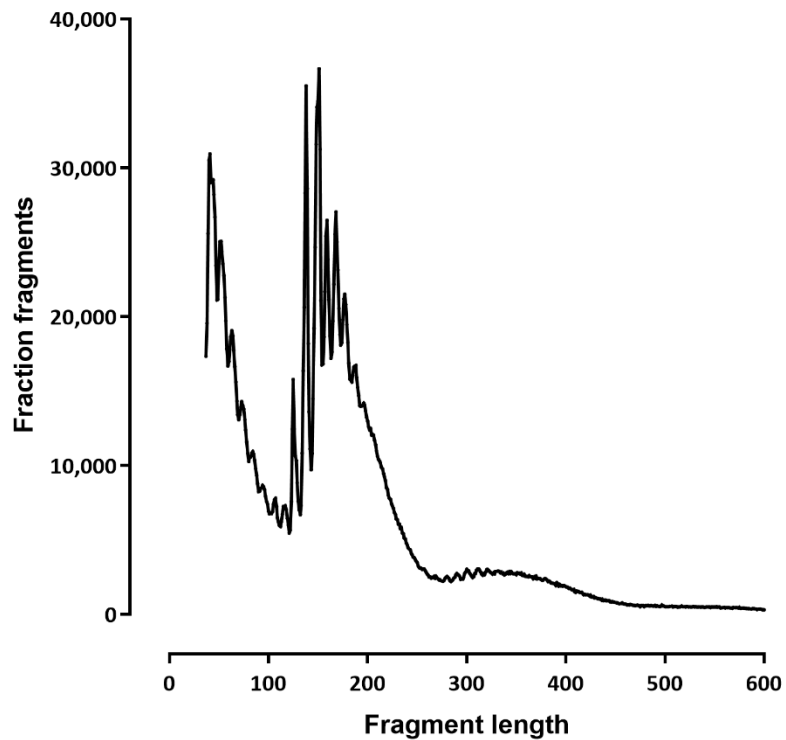
L3922-AR14-UT-1



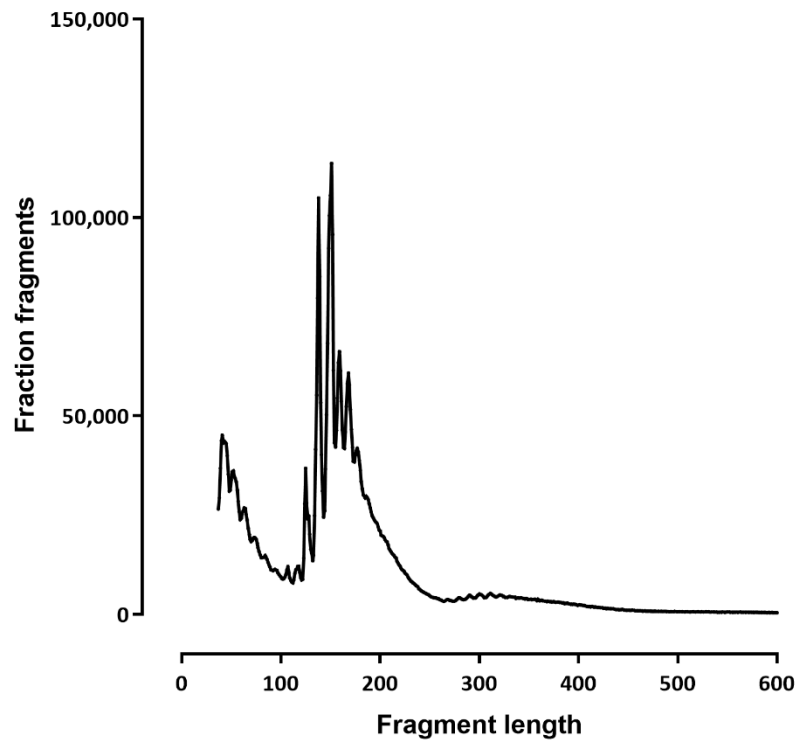
L3923-AR14-UT-2



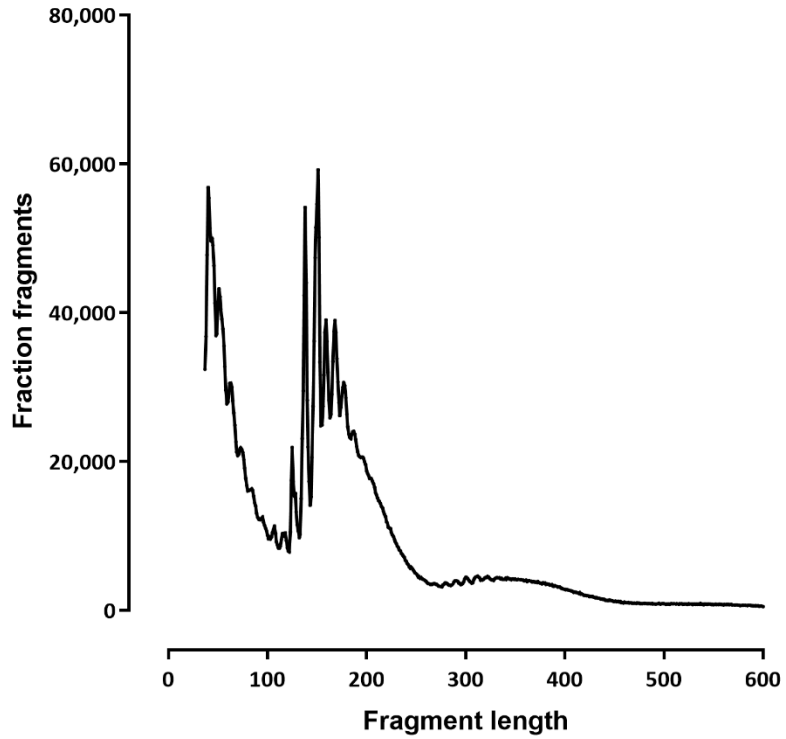
L3925-AR14-AS-1



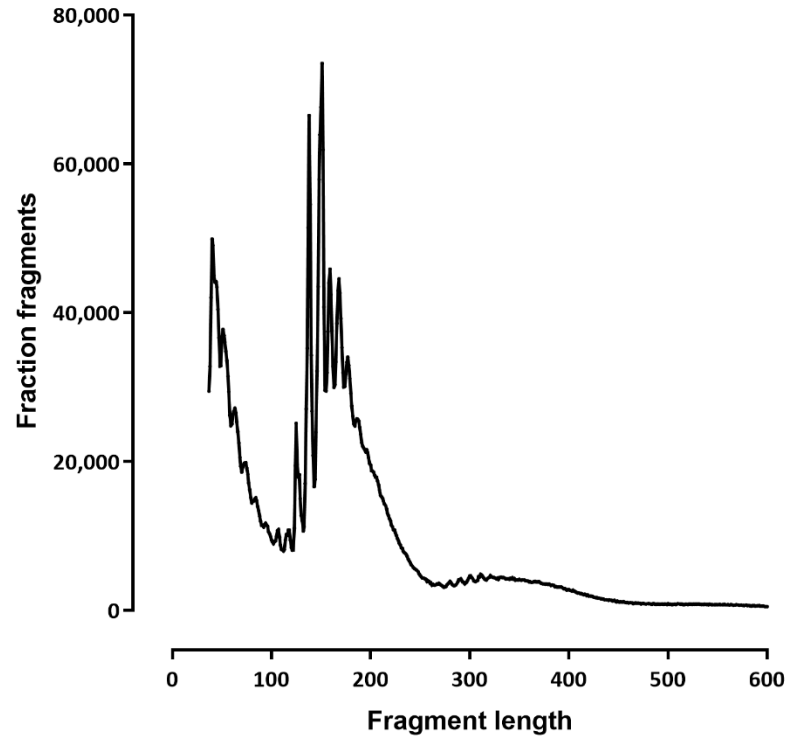
L3926-AR14-AS-2



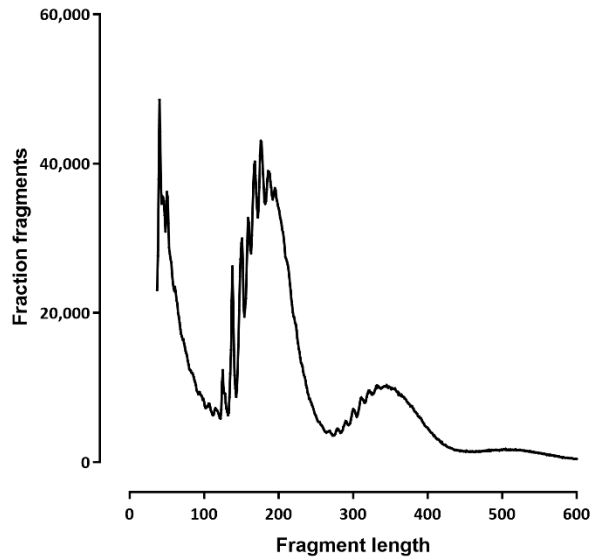
L3928-AR14-HS-1



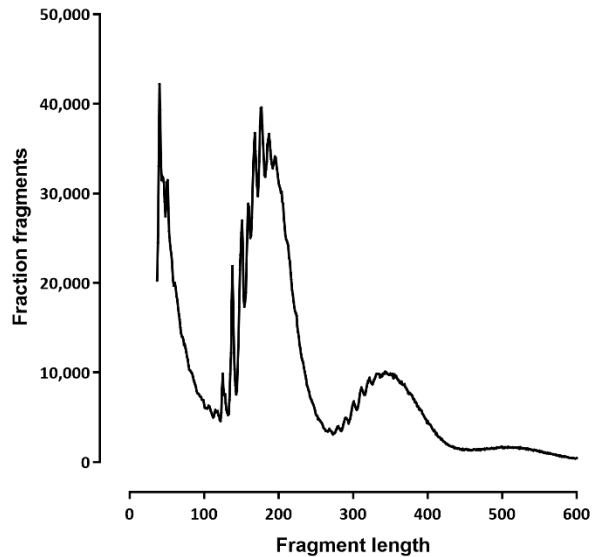
L3929-AR14-HS-2



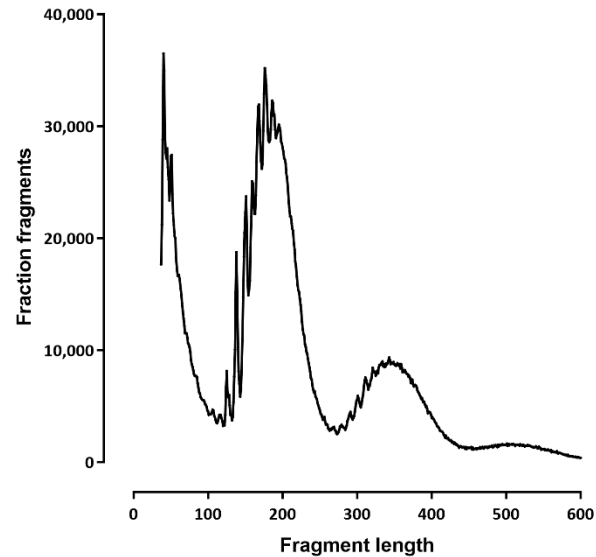
L3931-DC-SIGN-UT-1



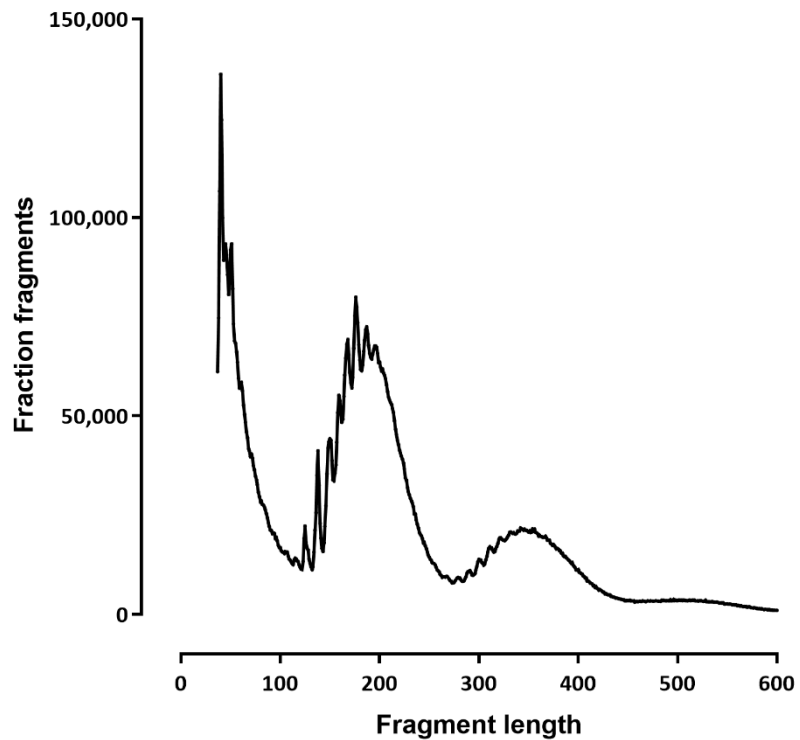
L3932-DC-SIGN-UT-2



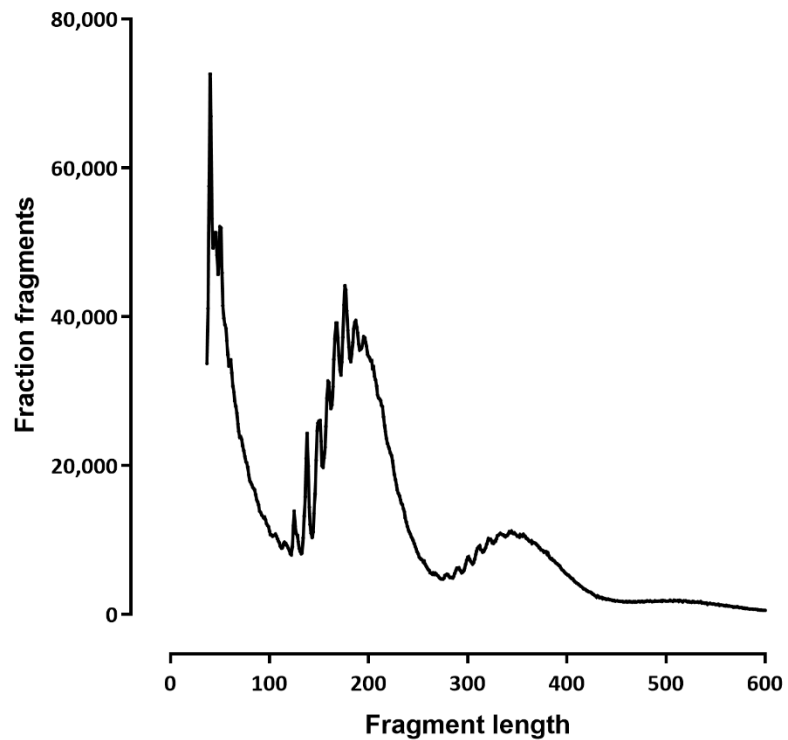
L3933-DC-SIGN-UT-3



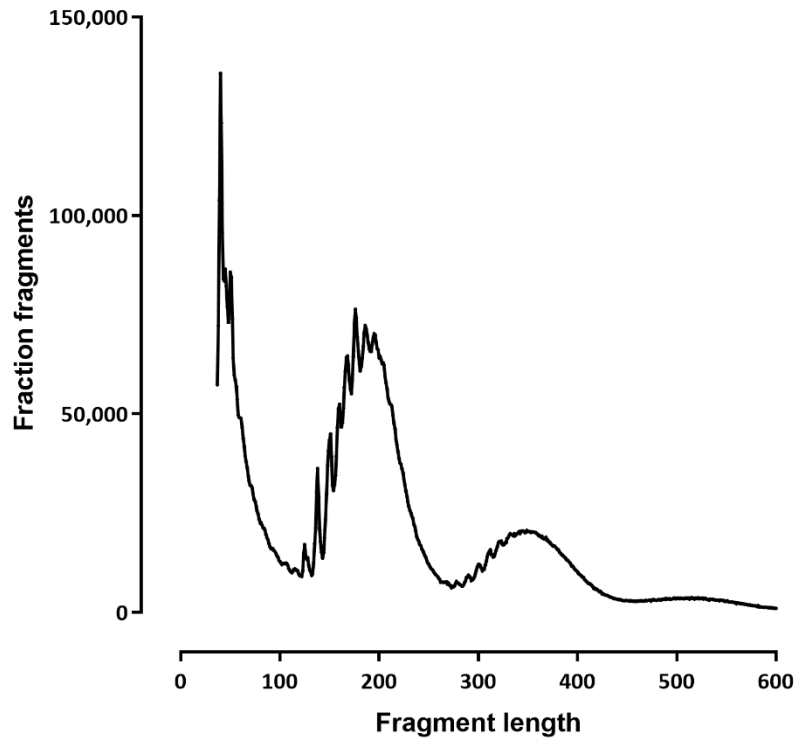
L3934-DC-SIGN-AS-1



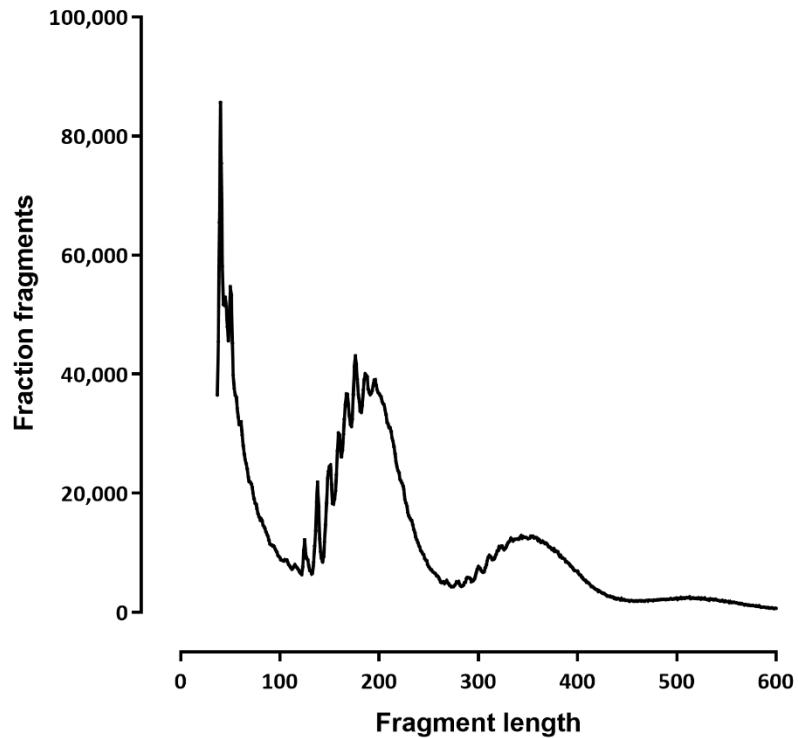
L3935-DC-SIGN-AS-2



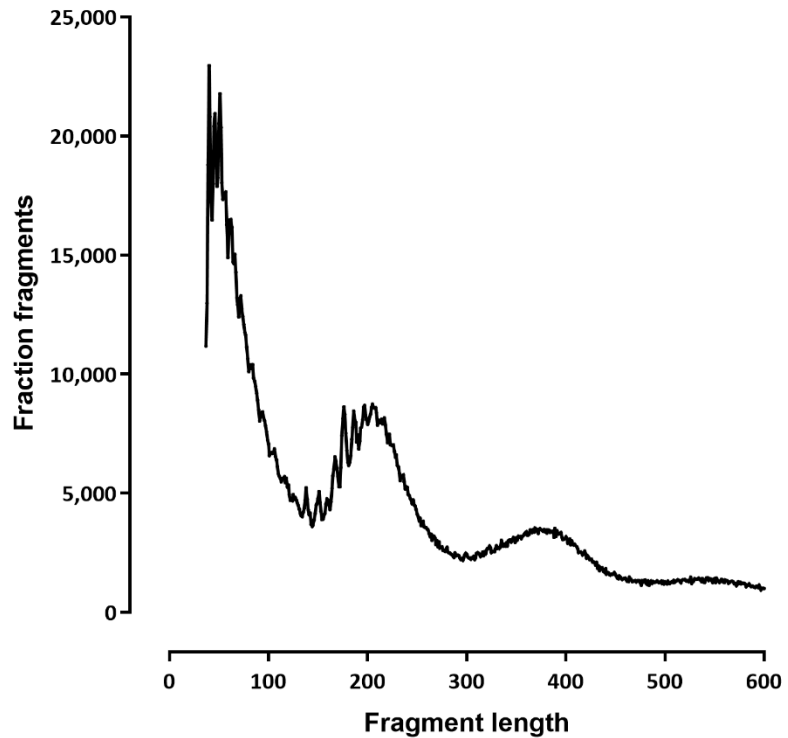
L3937-DC-SIGN-HS-1



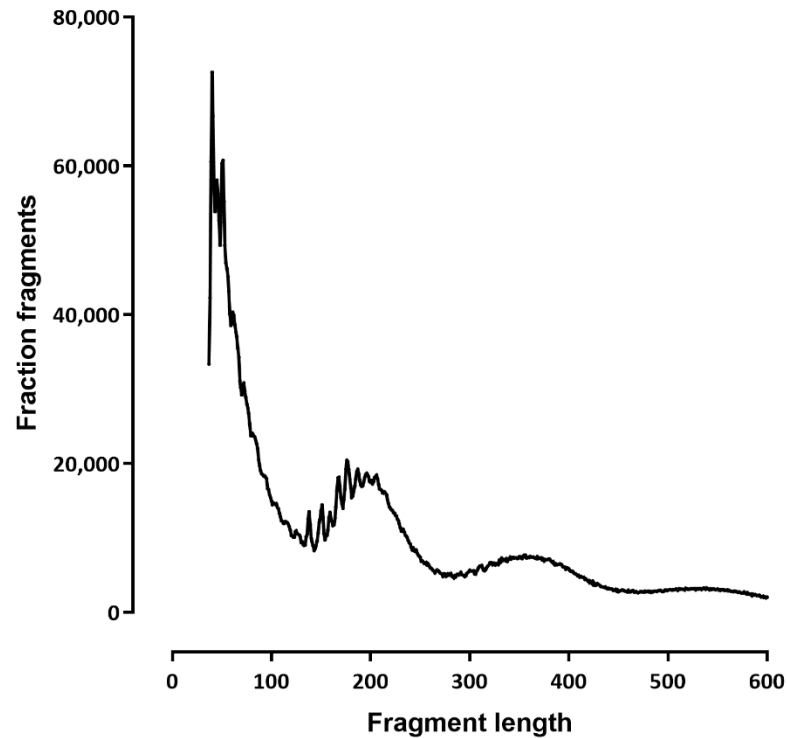
L3938-DC-SIGN-HS-2



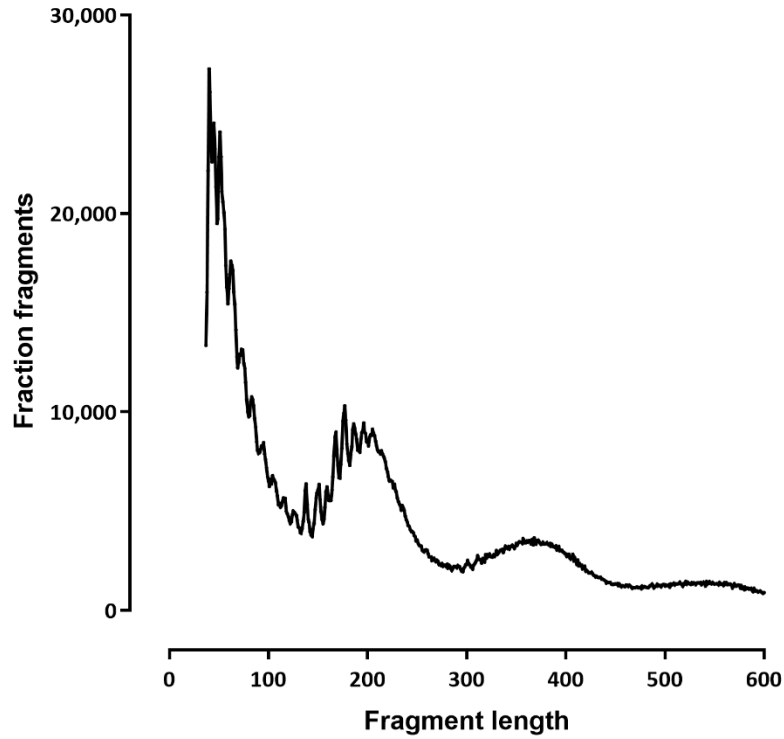
L3940-THP_1_M2-UT-1



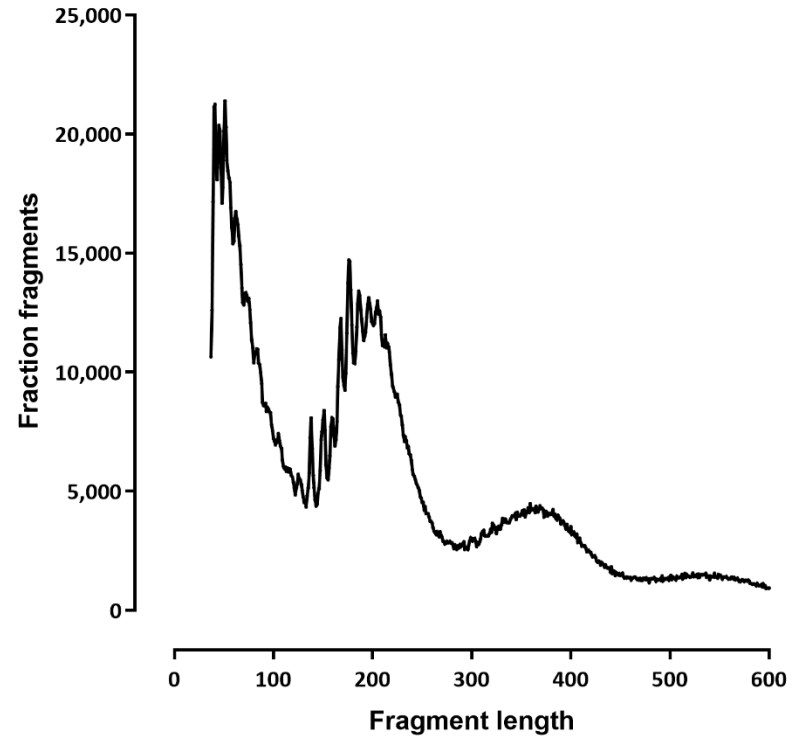
L3941-THP_1_M2-UT-2



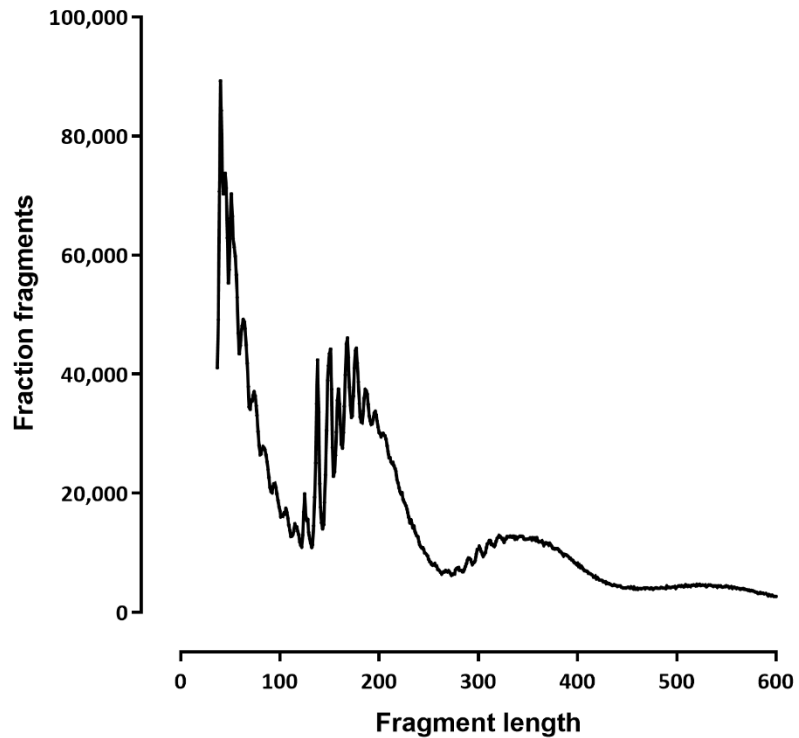
L3943-THP_1_M2-AS-1



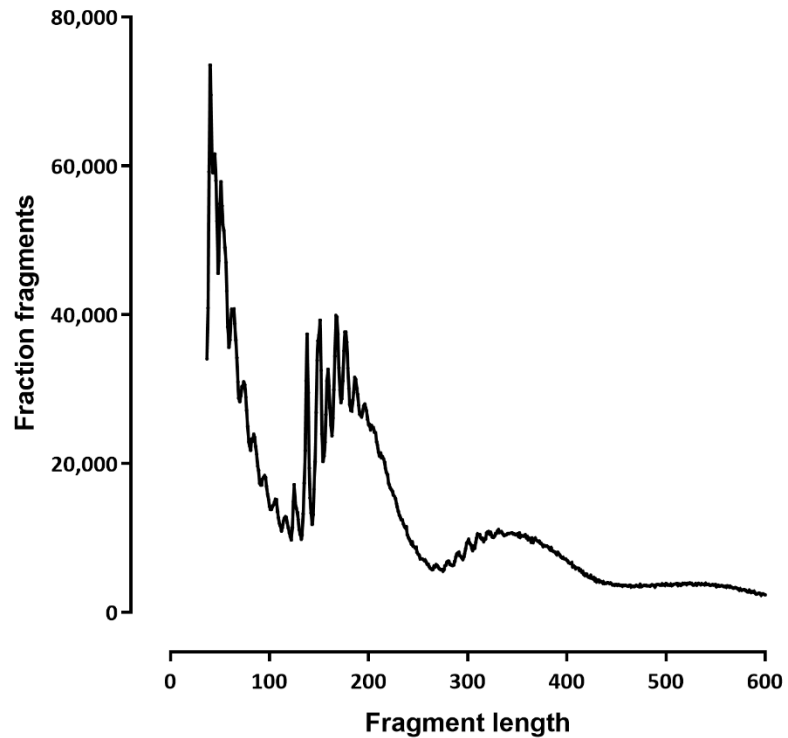
L3945-THP_1_M2-AS-3



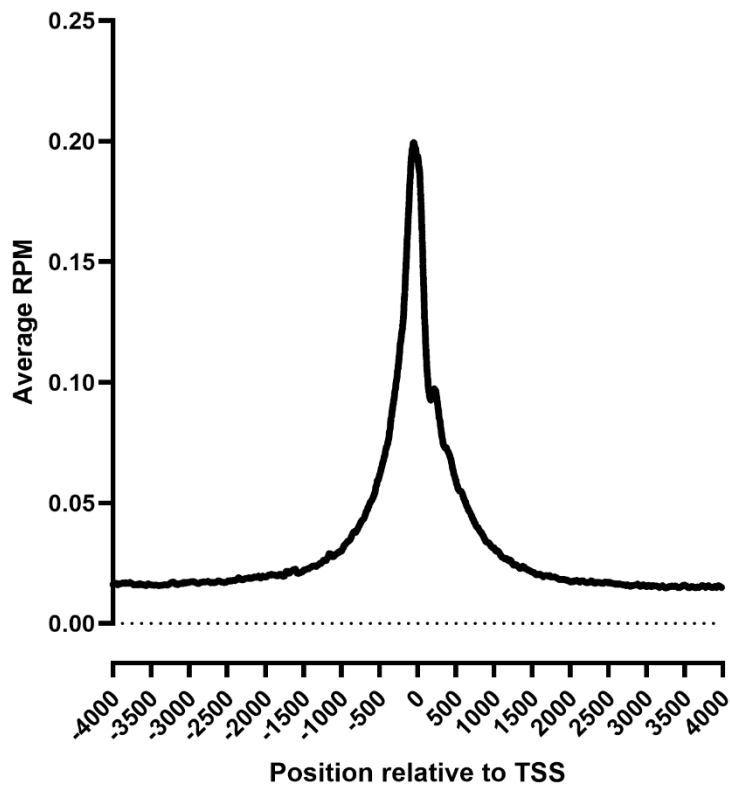
L3947-THP_1_M2-HS-2



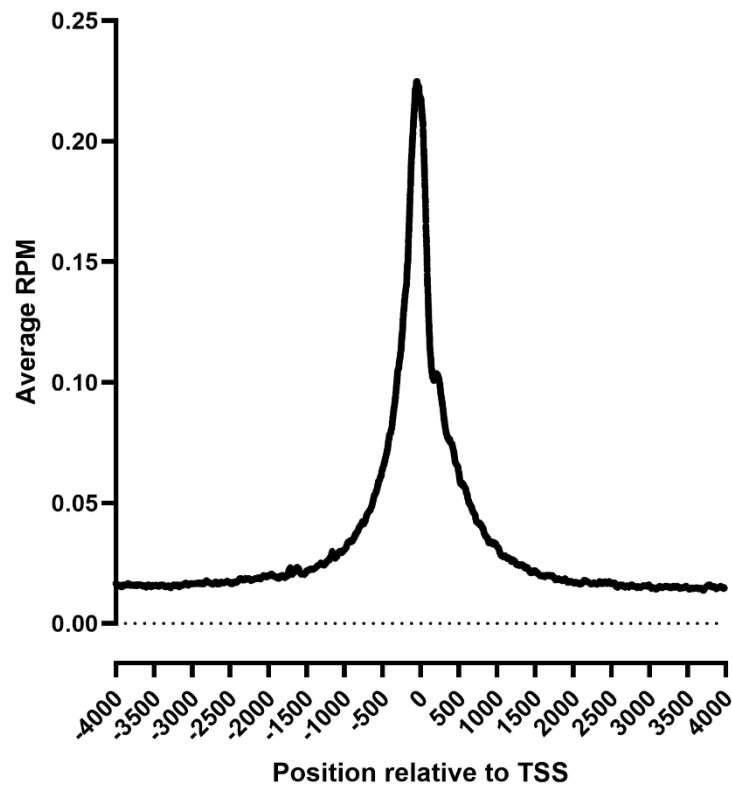
L3948-THP_1_M2-HS-3



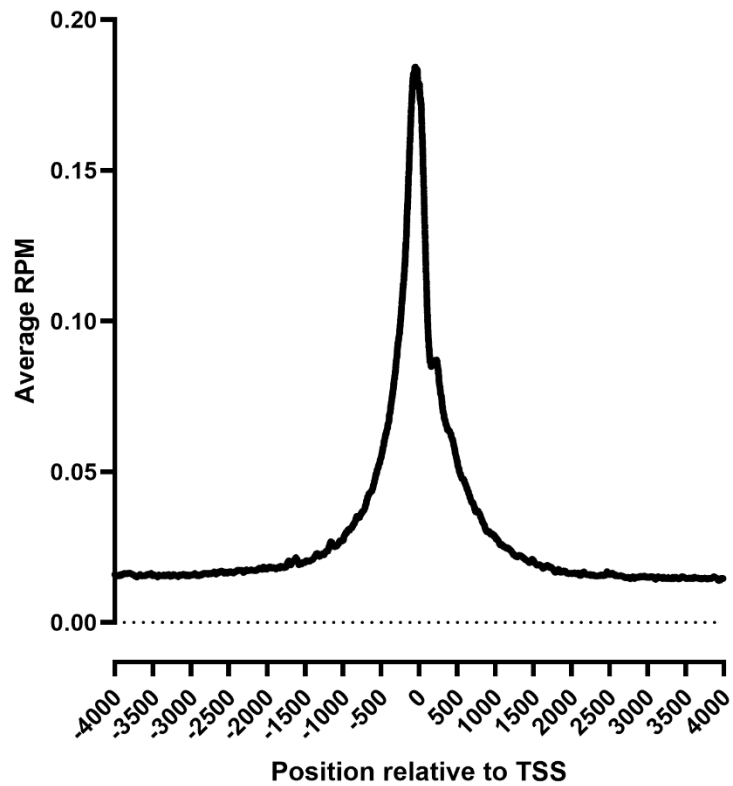
L3922-AR14-UT-1



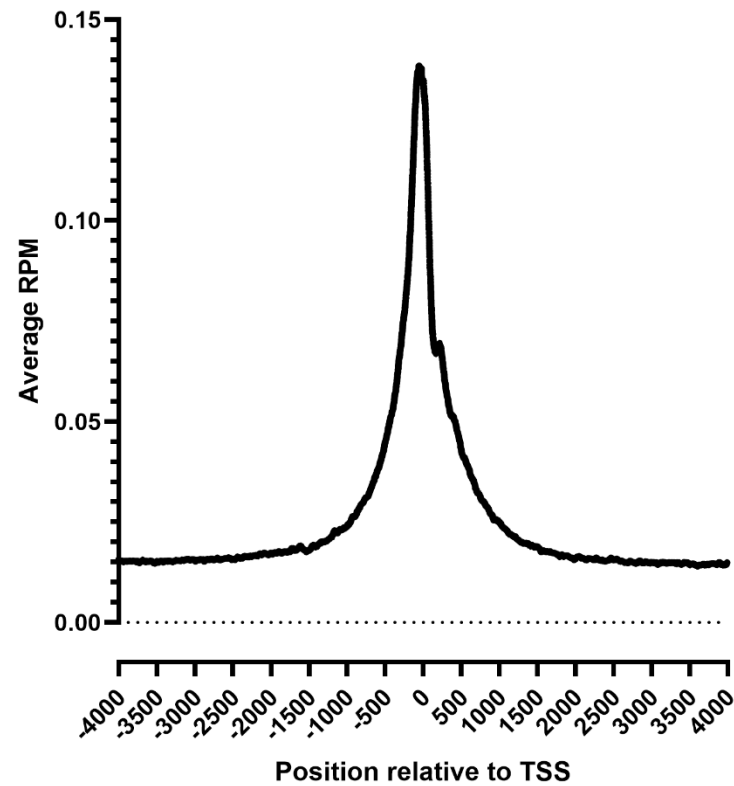
L3923-AR14-UT-2



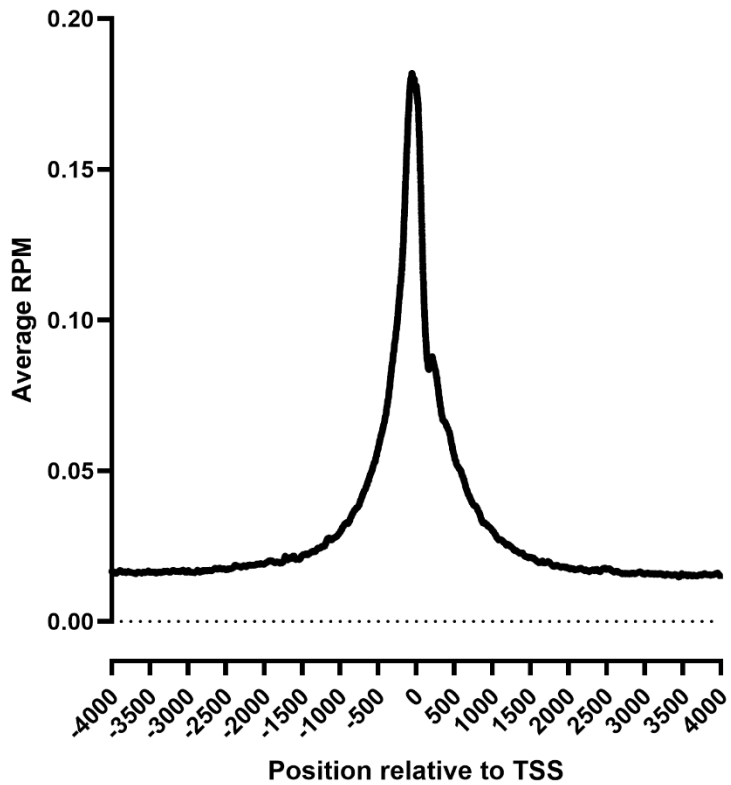
L3925-AR14-AS-1



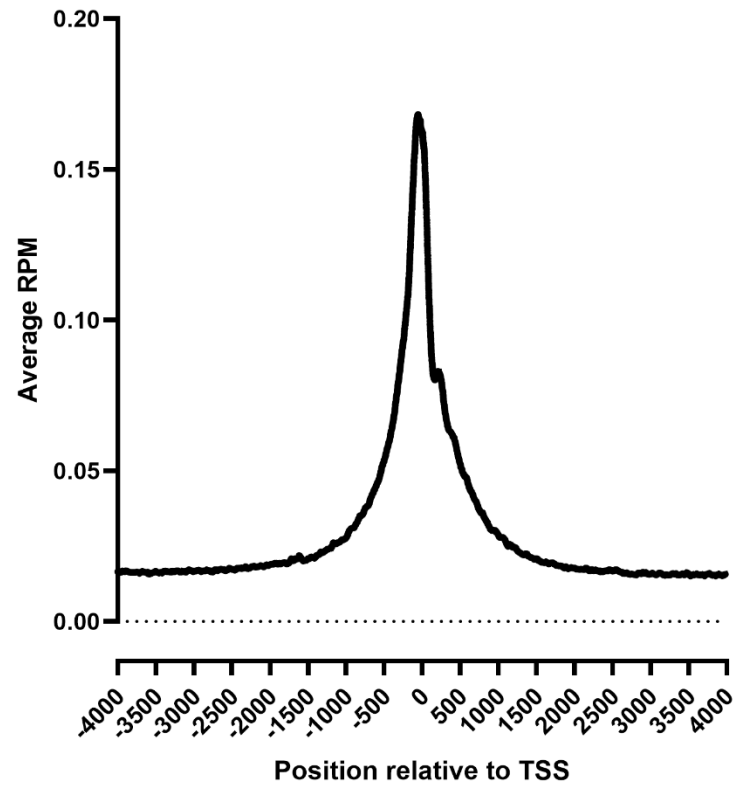
L3926-AR14-AS-2



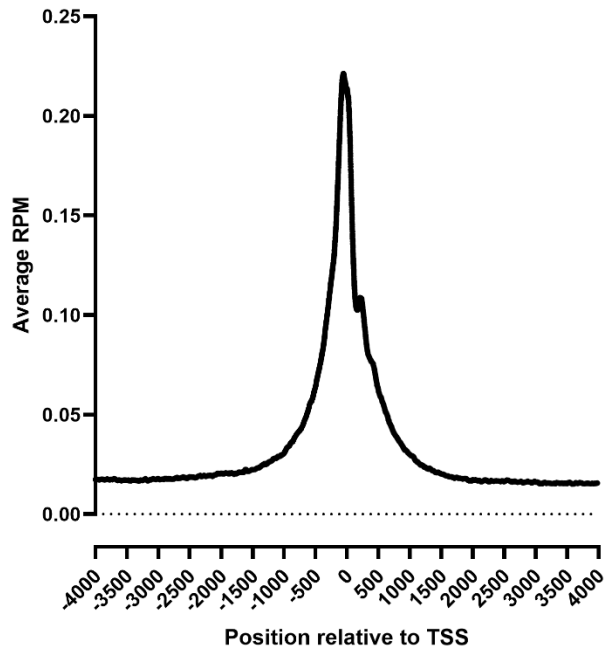
L3928-AR14-HS-1



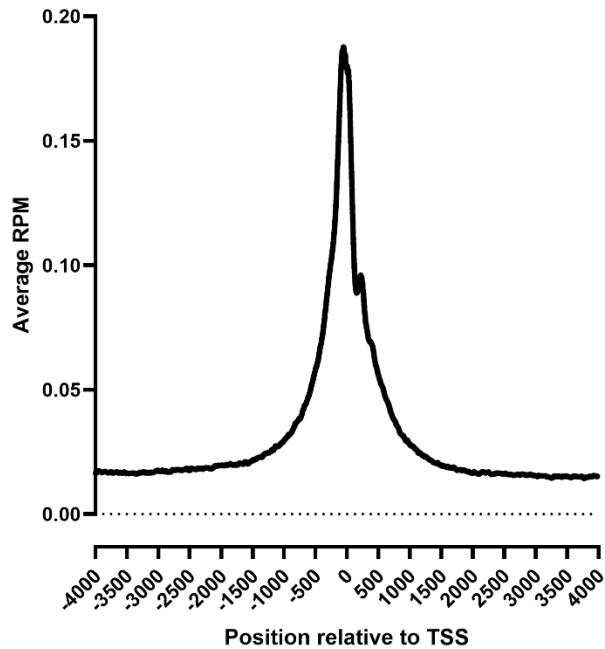
L3929-AR14-HS-2



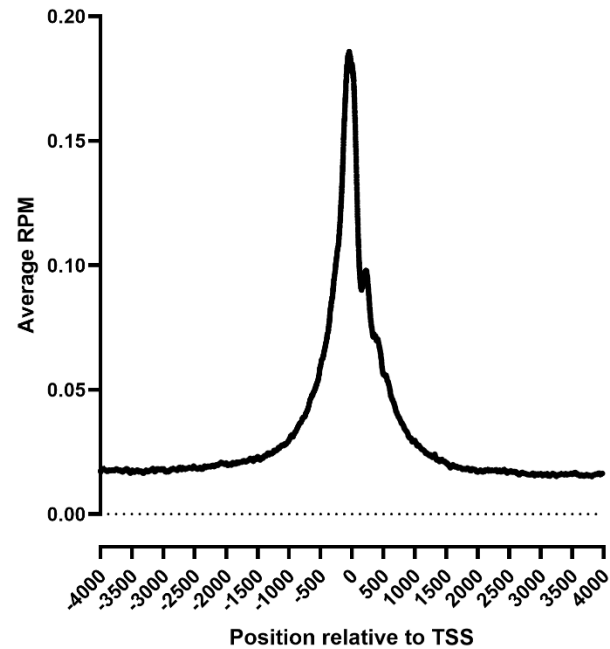
L3931-DC-SIGN-UT-1



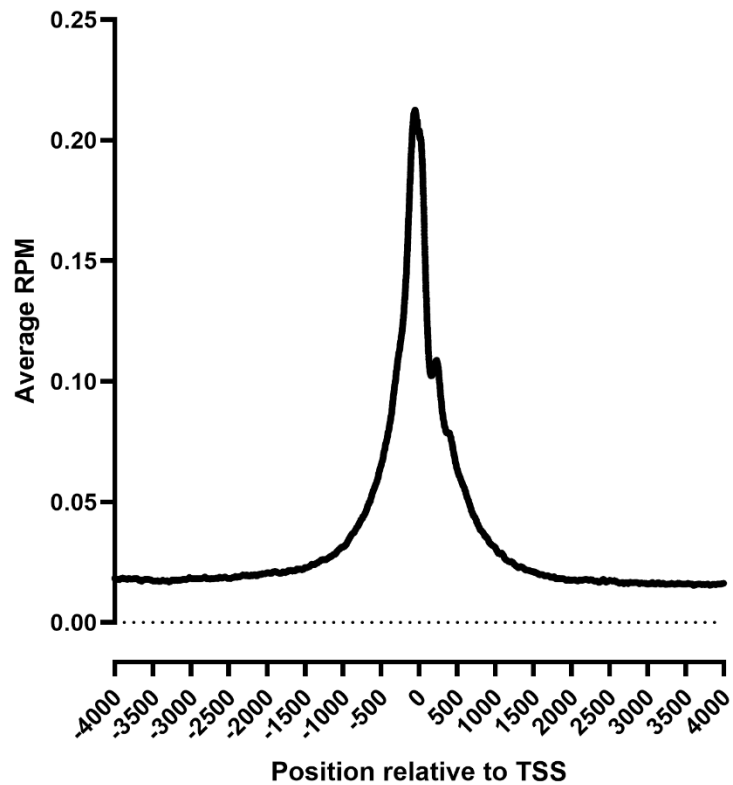
L3932-DC-SIGN-UT-2



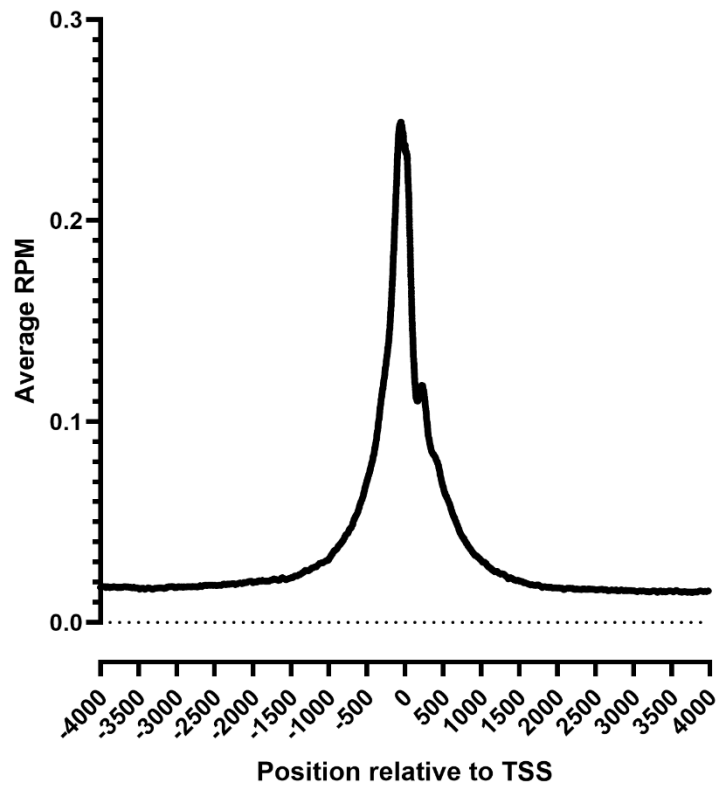
L3933-DC-SIGN-UT-3



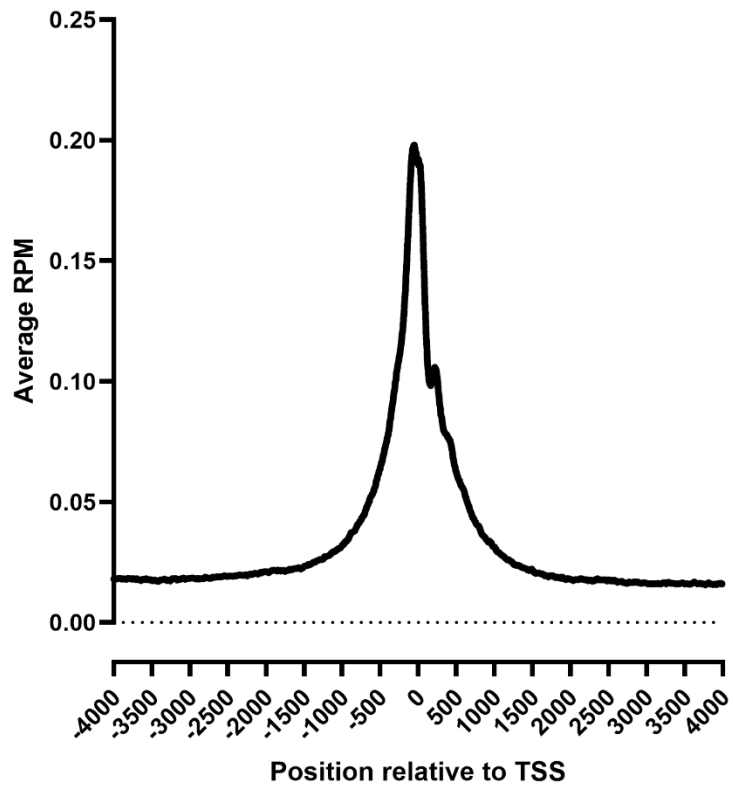
L3934-DC-SIGN-AS-1



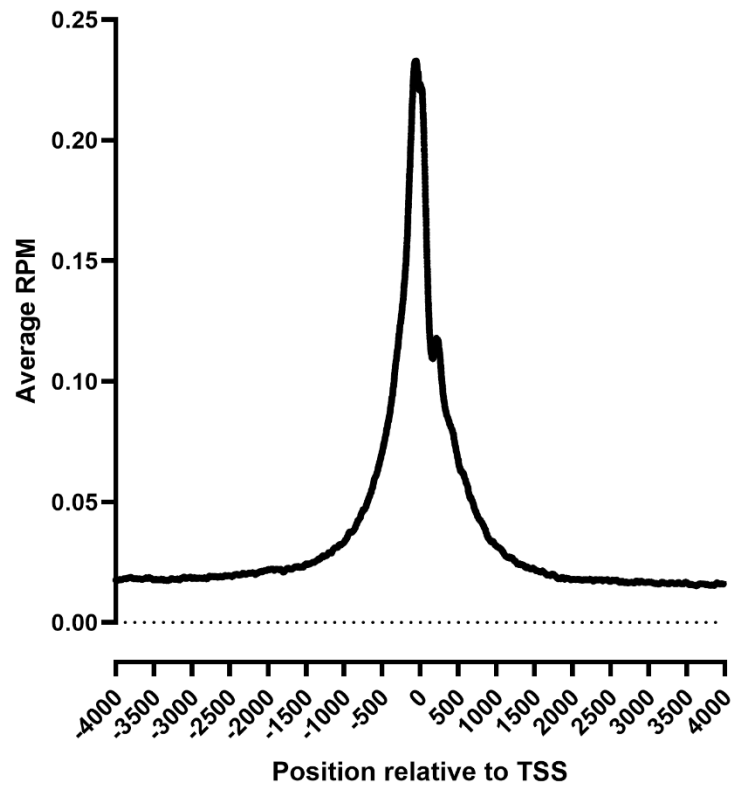
L3935-DC-SIGN-AS-2



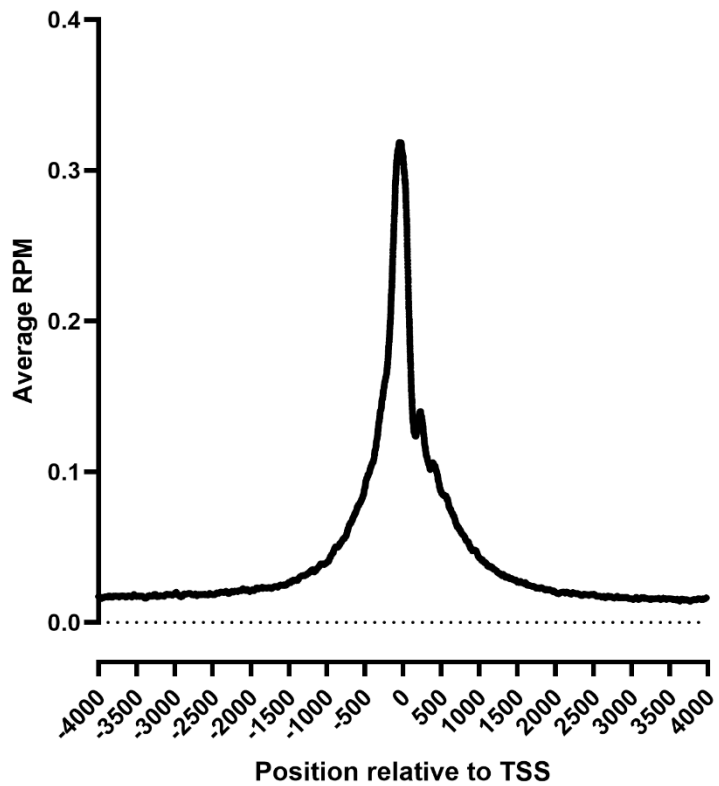
L3937-DC-SIGN-HS-1



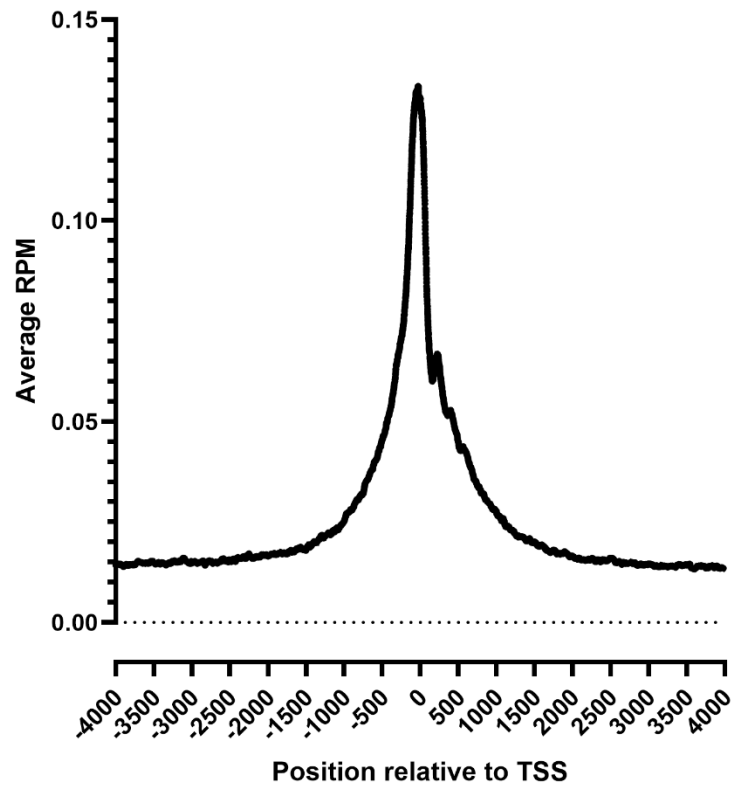
L3938-DC-SIGN-HS-2



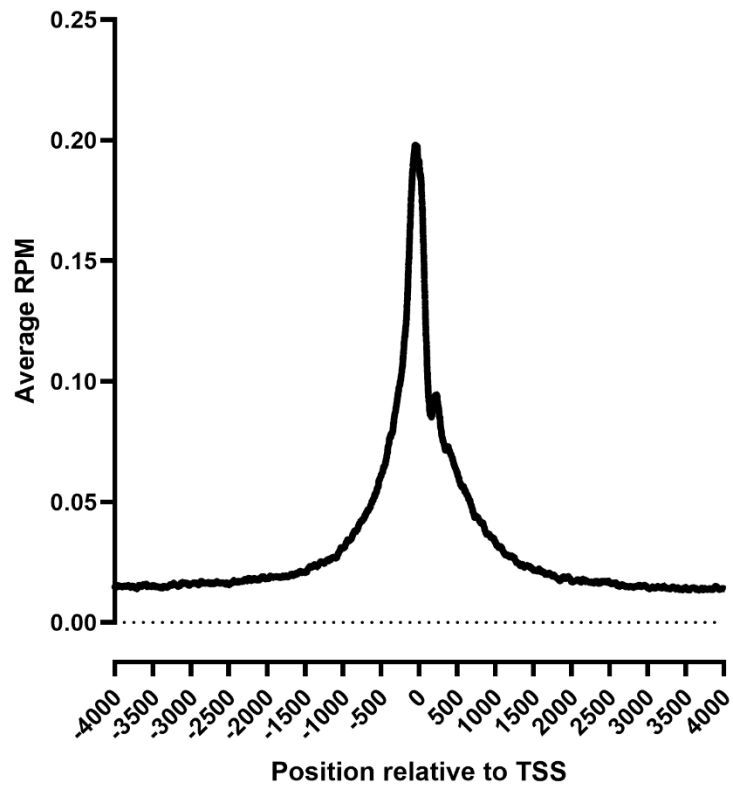
L3940-THP_1_M2-UT-1



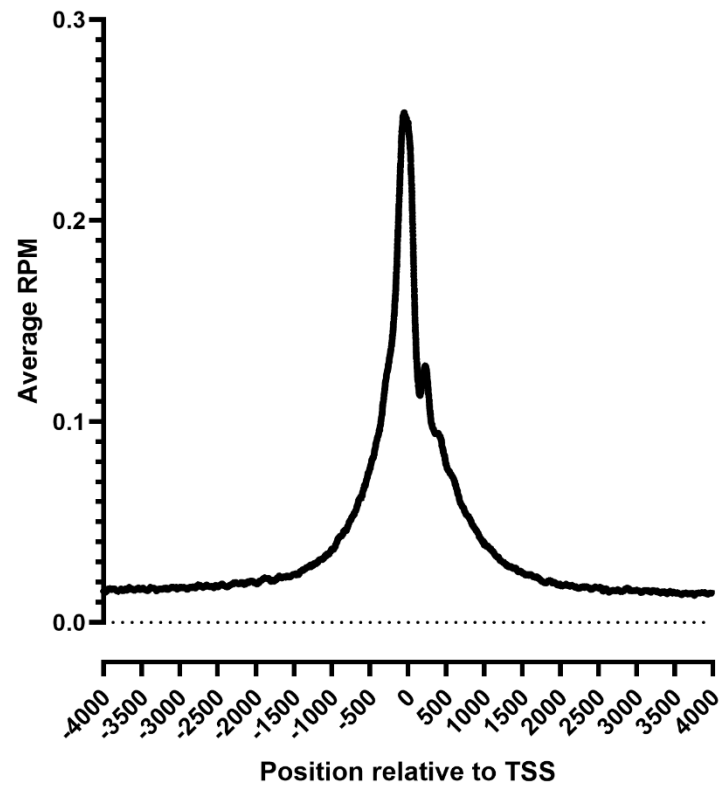
L3941-THP_1_M2-UT-2



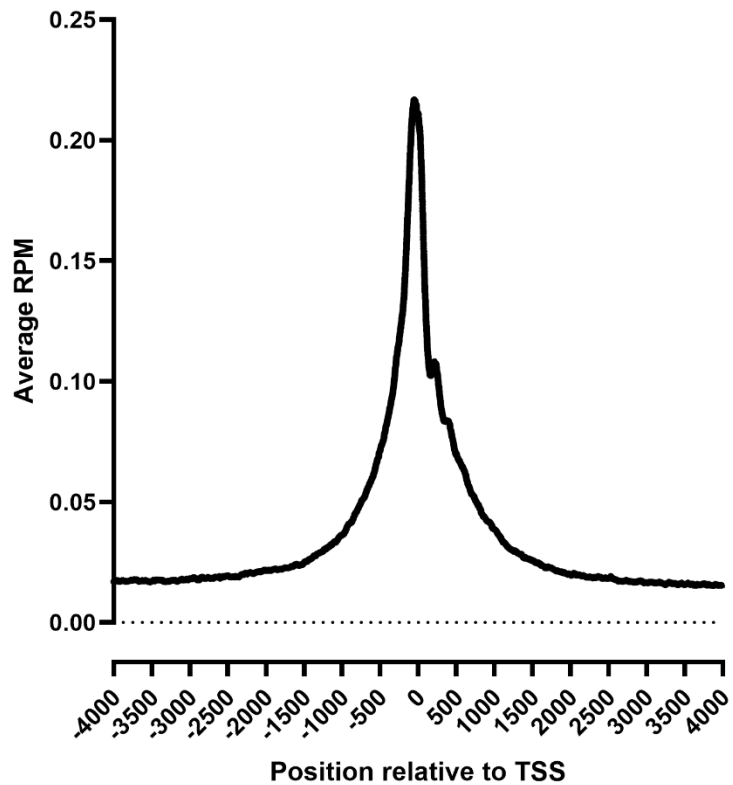
L3943-THP_1_M2-AS-1



L3945-THP_1_M2-AS-3



L3947-THP_1_M2-HS-2



L3948-THP_1_M2-HS-3

