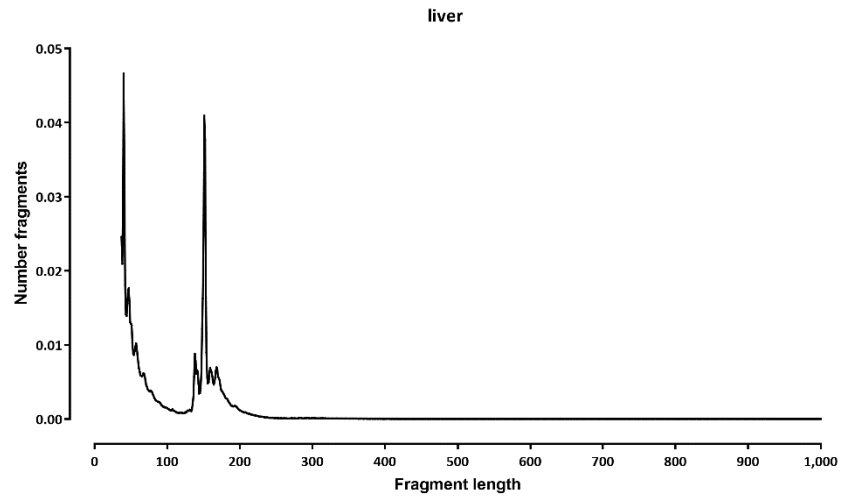
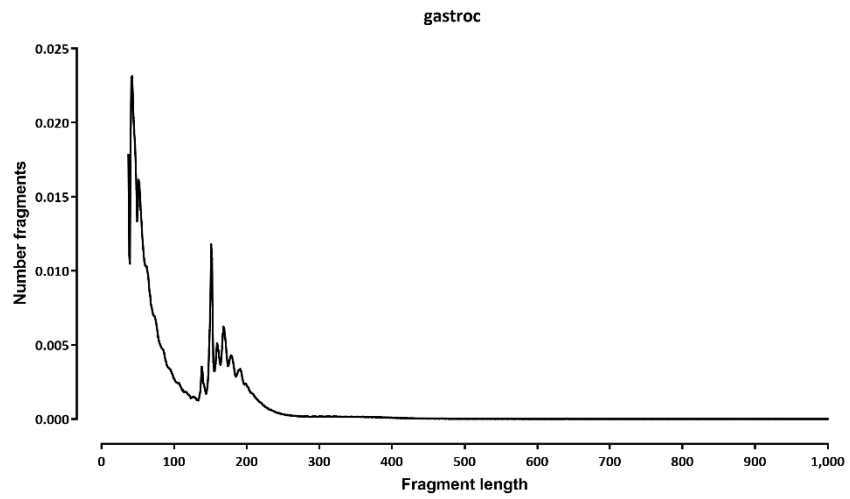
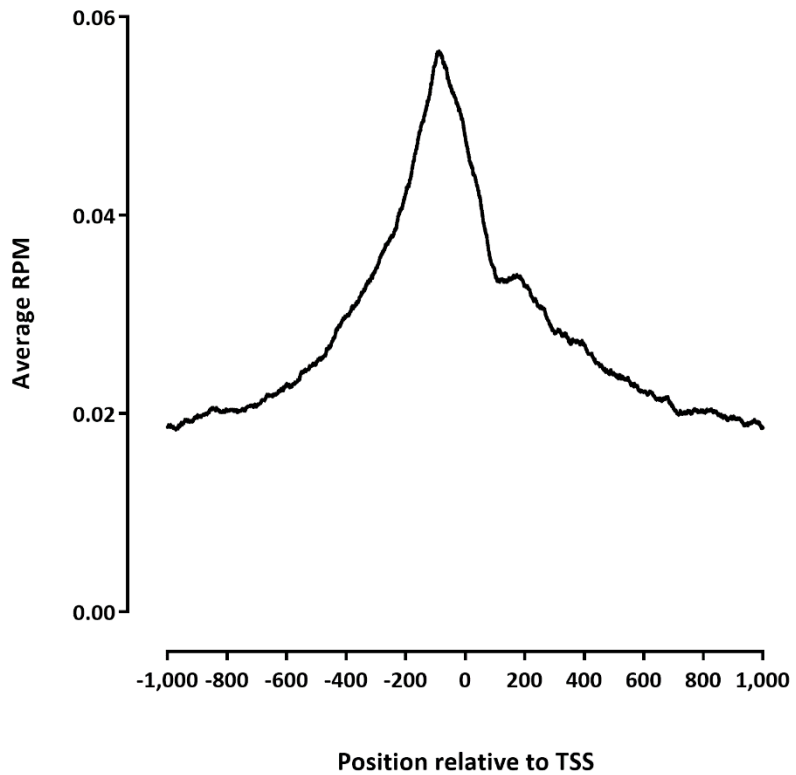


Dataset stats

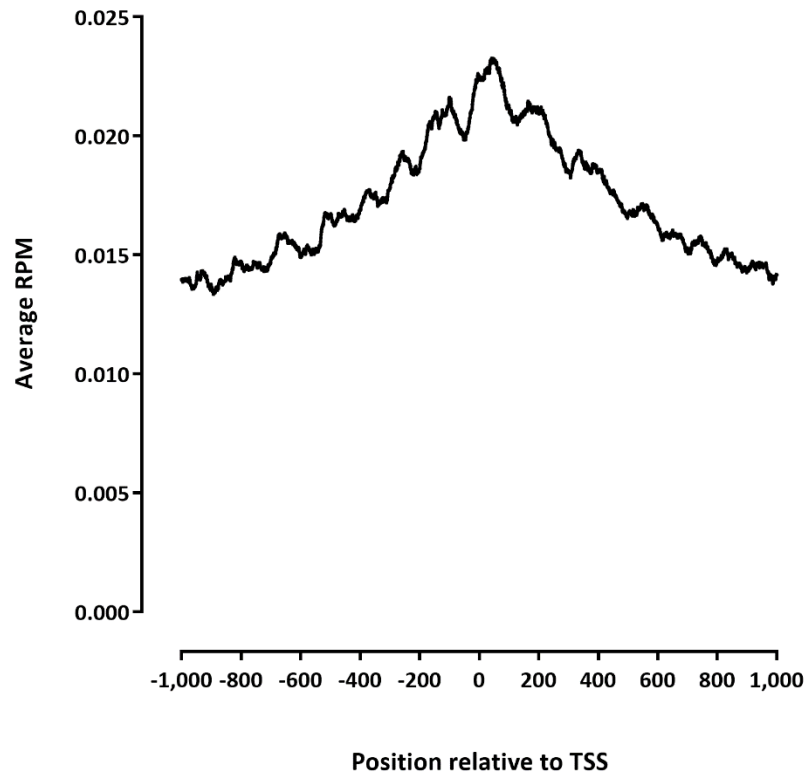
Species	Read Length	Library	Raw fragments	Unique non-chrM reads	Multi reads	Complexity	chrM reads	chrM fraction	Unique non-chrM reads after dedup	TSS ratio	MACS default peaks	FRiP (MACS)
rn6	2x36	gastroc	5,373,461	6,878,202		0.99	48,062	0.01	6,868,042	2.91	908	3,565
rn6	2x36	liver	4,793,508	5,302,188		0.99	1,151,022	0.18	5,275,262	1.63	561	2,587



gastroc



liver



Snapshots

