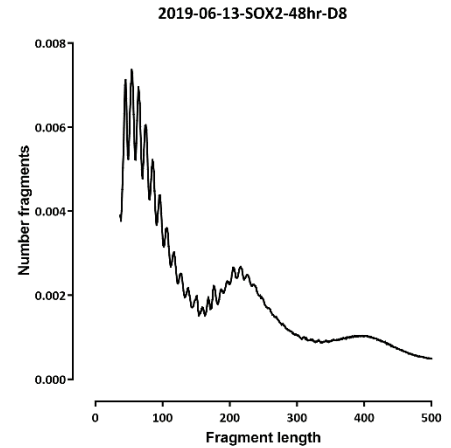
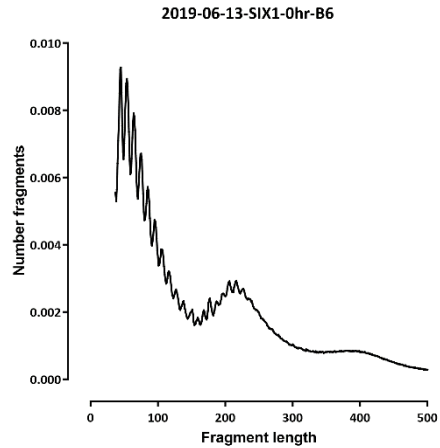
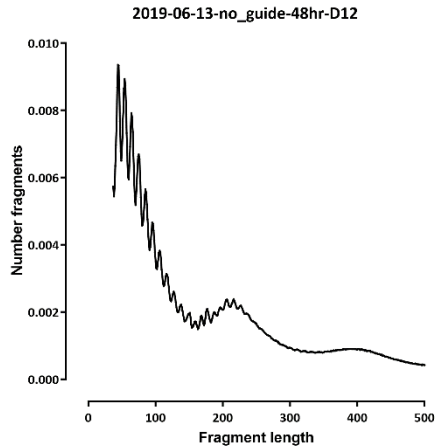
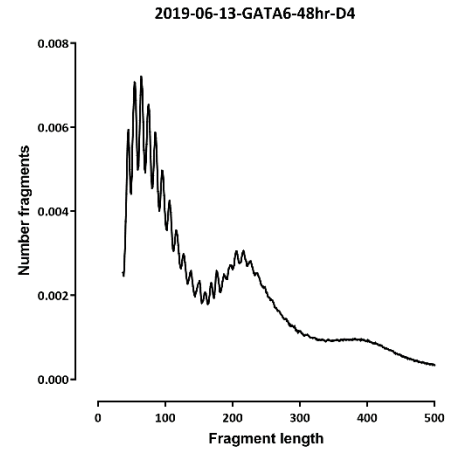
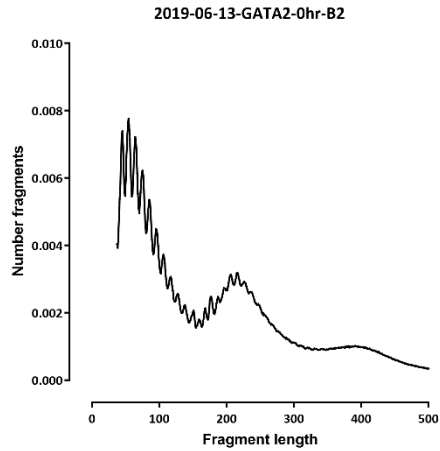
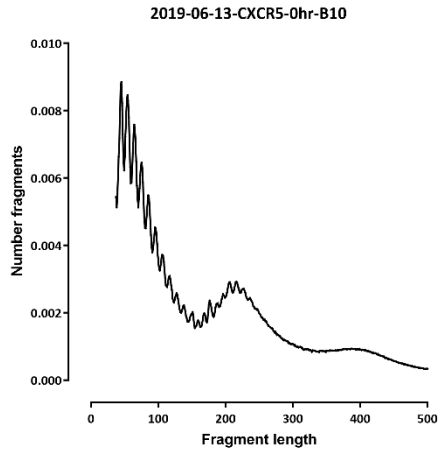


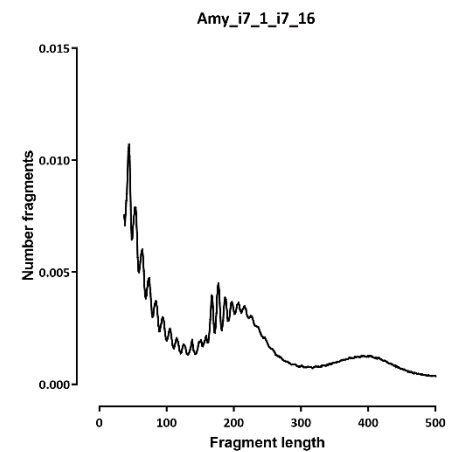
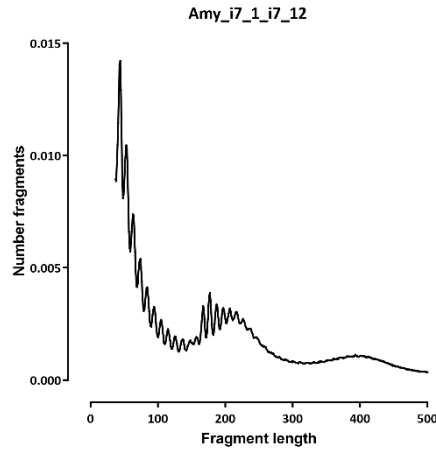
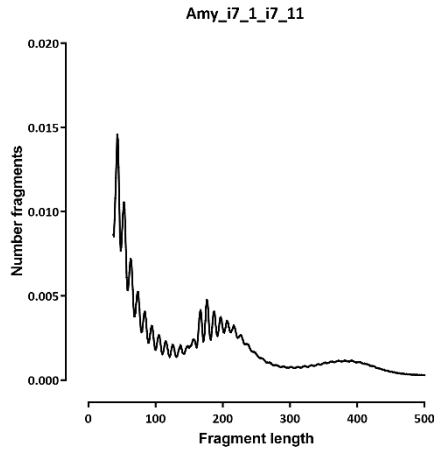
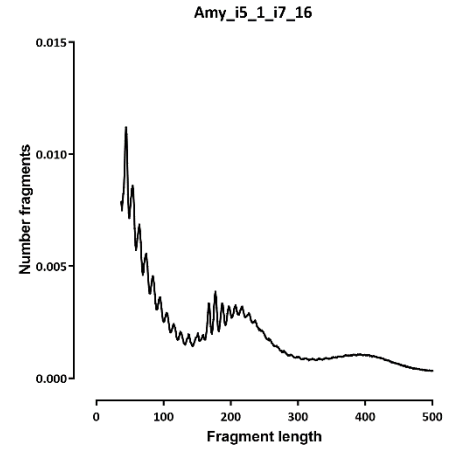
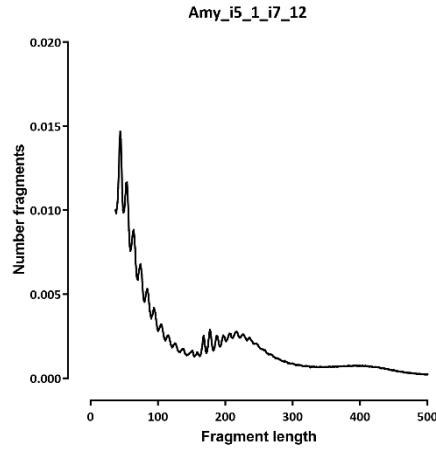
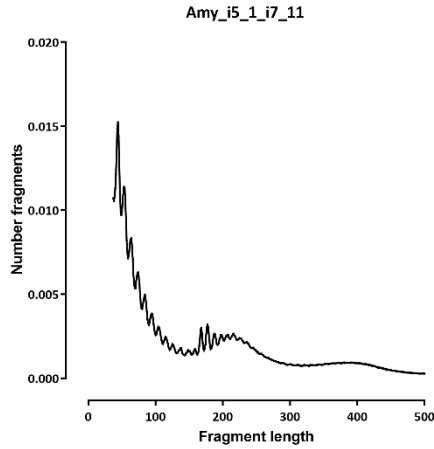
# Dataset stats

Species	Read Length	Library	Raw fragments	Unique non-chrM reads	Multi reads	Complexity	chrM reads	chrM fraction	Unique non-chrM reads after dedup	TSS ratio	MACS default peaks	FRiP (MACS)
<i>Homo sapiens</i> hg38-female	2x36	2019-06-13-CXCR5-0hr-B10	27,940,628	22,685,404		0.79	6,280,252	0.22	19,273,894	16.57	34,228	323,999
<i>Homo sapiens</i> hg38-female	2x36	2019-06-13-GATA2-0hr-B2	34,724,334	28,771,750		0.79	8,890,368	0.24	24,611,212	16.54	43,687	338,848
<i>Homo sapiens</i> hg38-female	2x36	2019-06-13-GATA6-48hr-D4	22,766,672	18,043,368		0.80	5,313,650	0.23	15,417,006	17.51	34,793	327,896
<i>Homo sapiens</i> hg38-female	2x36	2019-06-13-no_guide-48hr-D12	53,853,202	42,276,486		0.76	11,520,370	0.21	35,195,728	15.84	47,441	338,431
<i>Homo sapiens</i> hg38-female	2x36	2019-06-13-SIX1-0hr-B6	30,531,116	24,913,606		0.79	7,012,566	0.22	21,134,640	16.43	35,823	313,507
<i>Homo sapiens</i> hg38-female	2x36	2019-06-13-SOX2-48hr-D8	41,367,261	31,427,322		0.75	8,715,350	0.22	26,021,006	17.26	40,298	370,591
<i>Homo sapiens</i> hg38-female	2x36	Amy_i5_1_i7_11	7,219,137	10,796,652		0.94	169,488	0.02	10,487,442	15.59	22,498	200,576
<i>Homo sapiens</i> hg38-female	2x36	Amy_i5_1_i7_12	7,754,233	11,977,518		0.93	282,828	0.02	11,656,964	15.63	30,487	265,793
<i>Homo sapiens</i> hg38-female	2x36	Amy_i5_1_i7_16	9,568,326	11,177,192		0.93	5,108,952	0.31	10,860,198	15.02	26,344	228,848
<i>Homo sapiens</i> hg38-female	2x36	Amy_i5_2_i7_11	10,090,596	15,870,488		0.96	165,354	0.01	15,457,608	6.64	9,592	38,356
<i>Homo sapiens</i> hg38-female	2x36	Amy_i5_2_i7_12	9,135,134	14,308,258		0.96	368,062	0.03	13,925,242	7.60	11,688	54,868
<i>Homo sapiens</i> hg38-female	2x36	Amy_i5_2_i7_16	8,670,492	9,013,950		0.95	5,875,240	0.39	8,762,814	11.39	14,749	107,473

# Fragment length

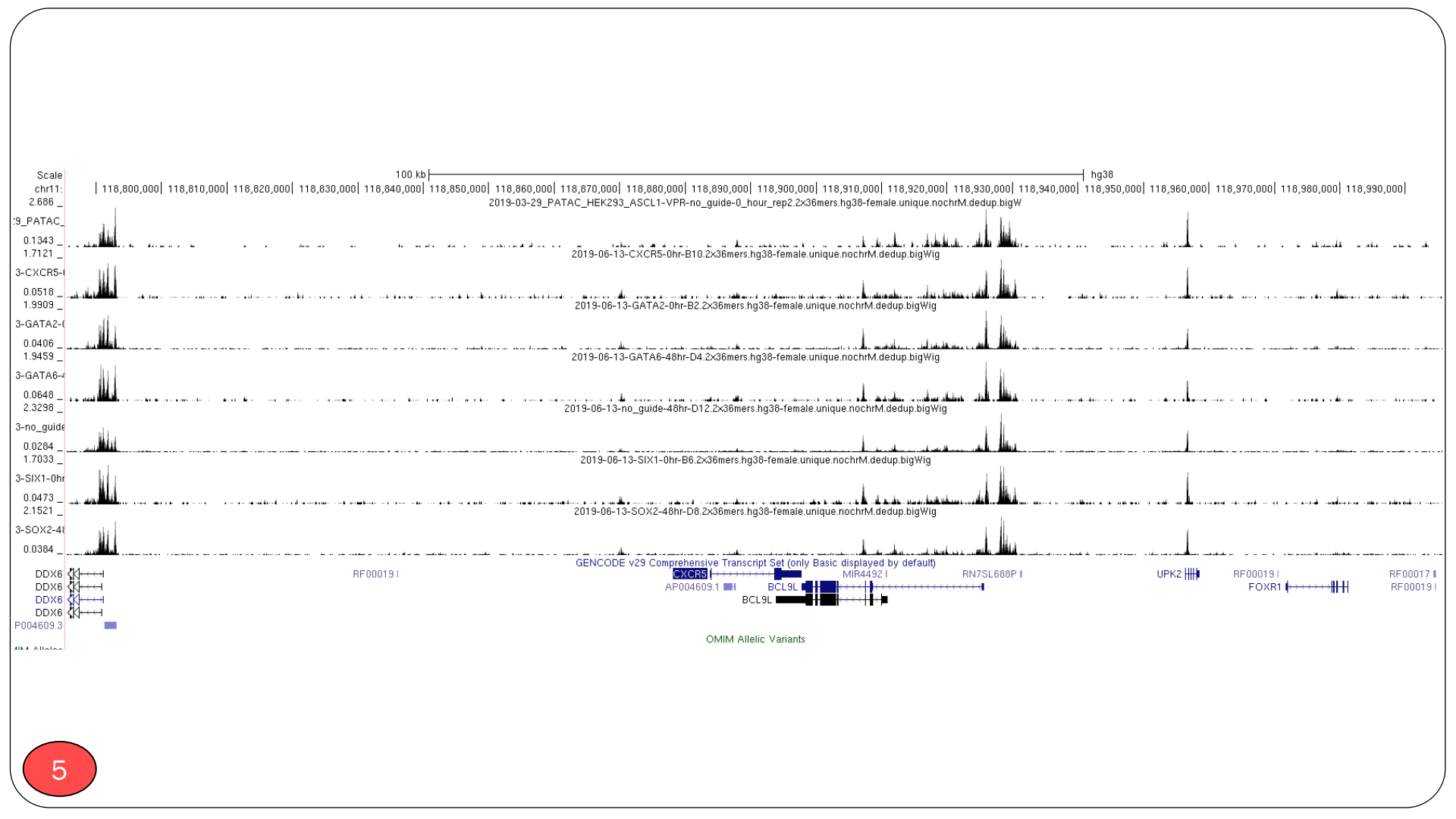


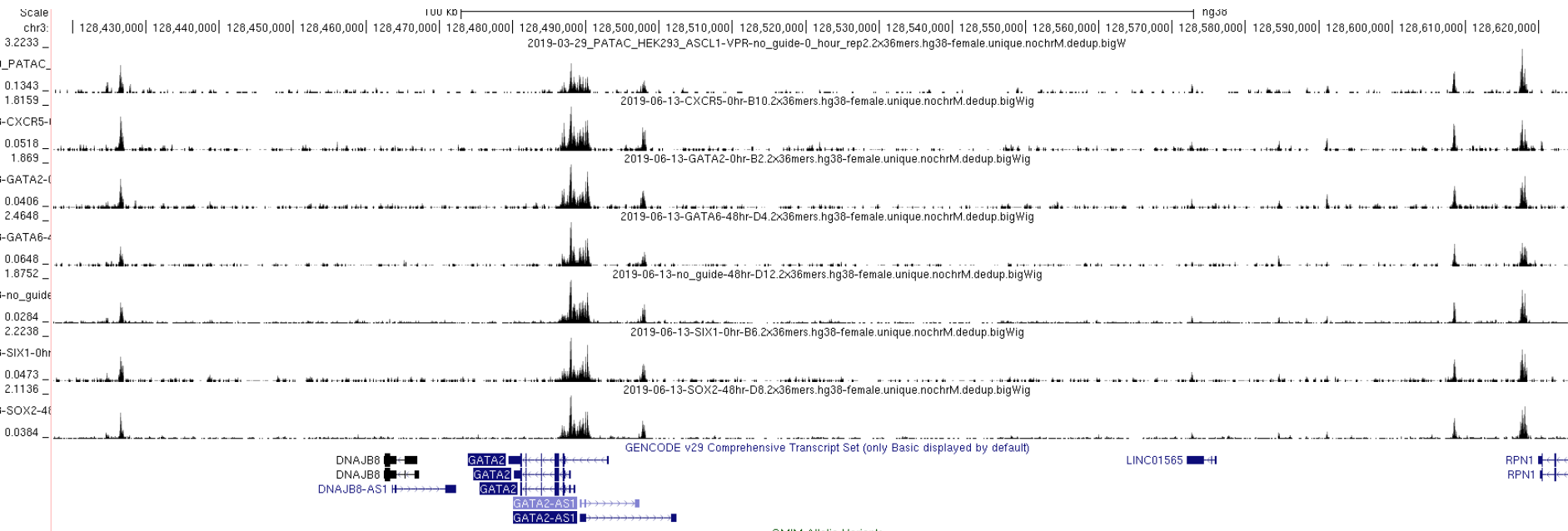
# Fragment length

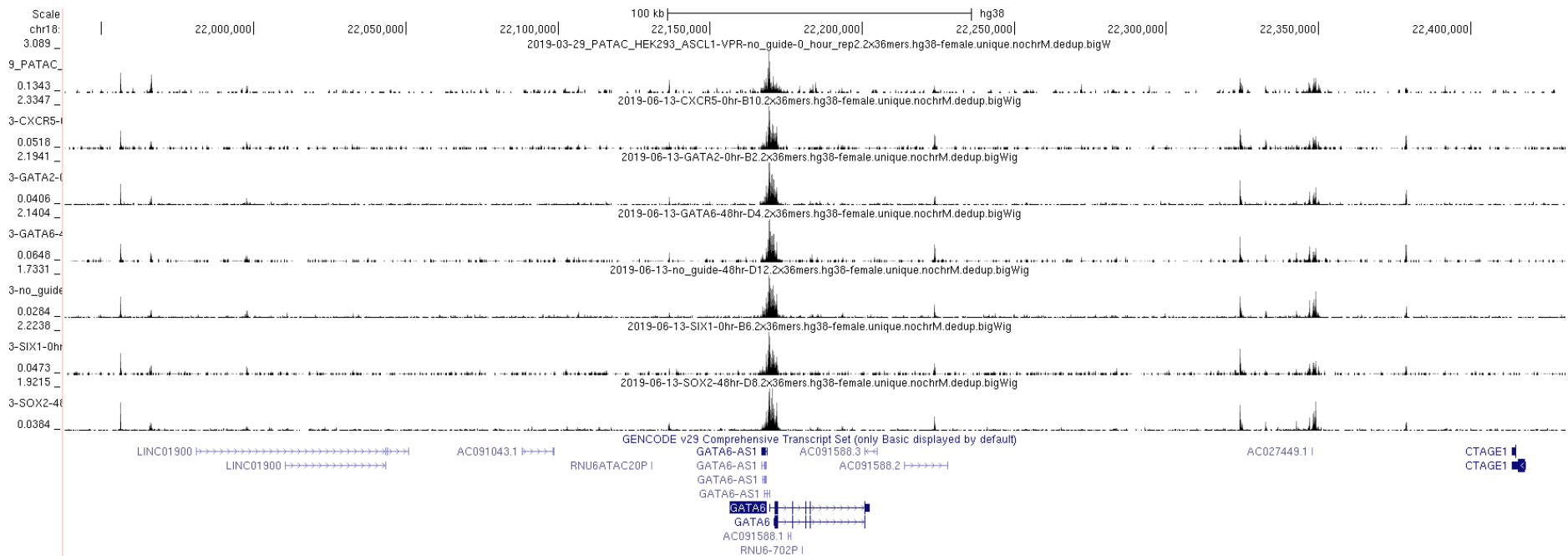


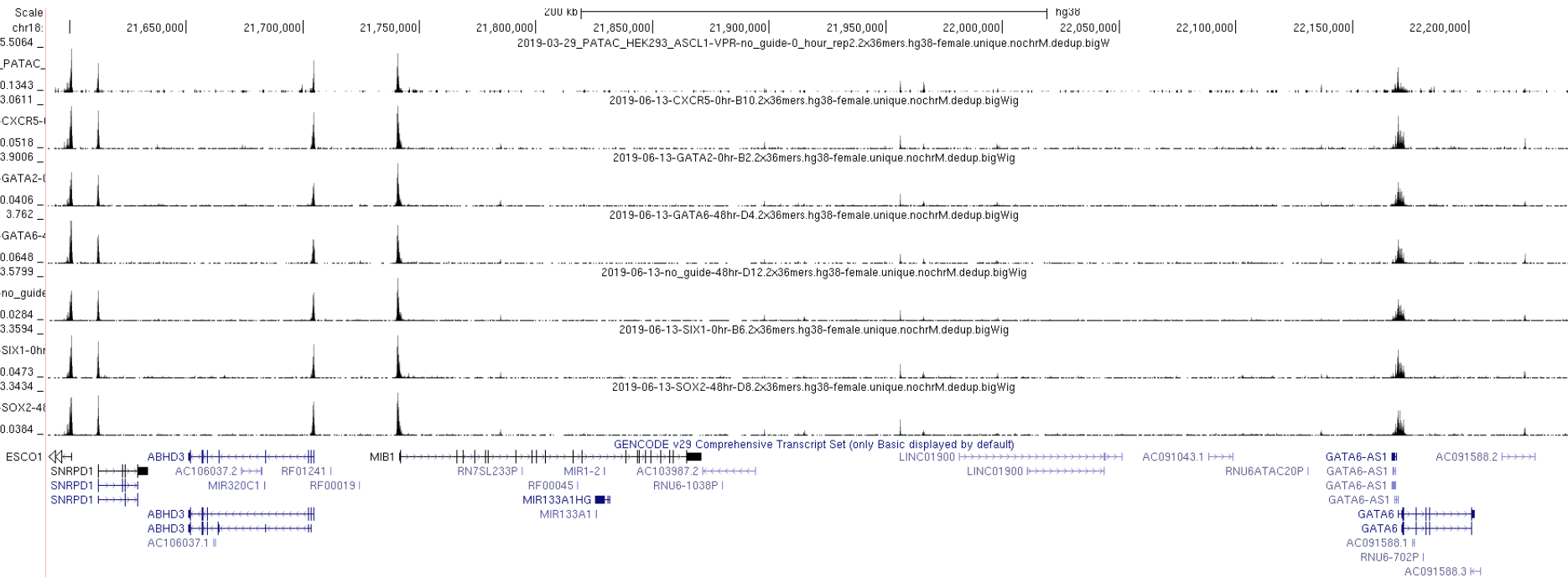
## Differential peaks

Number differential ATAC peaks			
A	B	p-adj	
		up in B vs A	down in B vs A
0hr	GATA6-48hr	0	0
0hr	no_guide-48hr	0	0
0hr	SOX2-48hr	0	2











## Well summary:

	1	2	3	4	5	6	7	8	9	10	11	12
A	106,831,916	25,080	323	17	57,898,324	104,747	230	488	54,228,151	12,557	350	1,211
B	3	34,724,334	13	0	1	30,531,116	18	0	2	27,940,628	18	0
C	791	41	48,088,972	44	284	6	50,962,664	316	264	86	47,455,856	535
D	0	0	34	22,766,672	0	0	35	41,367,261	12	0	27	53,853,202

proper I7 loading

	1	2	3	4	5	6	7	8	9	10	11	12
A	1	2	3	4	5	6	7	8	9	10	11	12
B	1	2	3	4	5	6	7	8	9	10	11	12
C	1	2	3	4	5	6	7	8	9	10	11	12
D	1	2	3	4	5	6	7	8	9	10	11	12

proper I5 loading

	1	2	3	4	5	6	7	8	9	10	11	12
A	3	3	3	3	3	3	3	3	3	3	3	3
B	4	4	4	4	4	4	4	4	4	4	4	4
C	5	5	5	5	5	5	5	5	5	5	5	5
D	6	6	6	6	6	6	6	6	6	6	6	6

proper end result

	1	2	3	4	5	6	7	8	9	10	11	12
A	3+1	3+2	3+3	3+4	3+5	3+6	3+7	3+8	3+9	3+10	3+11	3+12
B	4+1	4+2	4+3	4+4	4+5	4+6	4+7	4+8	4+9	4+10	4+11	4+12
C	5+1	5+2	5+3	5+4	5+5	5+6	5+7	5+8	5+9	5+10	5+11	5+12
D	6+1	6+2	6+3	6+4	6+5	6+6	6+7	6+8	6+9	6+10	6+11	6+12

proper I7 loading

	1	2	3	4	5	6	7	8	9	10	11	12
A	1	2	3	4	5	6	7	8	9	10	11	12
B	1	2	3	4	5	6	7	8	9	10	11	12
C	1	2	3	4	5	6	7	8	9	10	11	12
D	1	2	3	4	5	6	7	8	9	10	11	12

mixup I5 loading

	1	2	3	4	5	6	7	8	9	10	11	12
A	3	4	5	6	3	4	5	6	3	4	5	6
B	3	4	5	6	3	4	5	6	3	4	5	6
C	3	4	5	6	3	4	5	6	3	4	5	6
D	3	4	5	6	3	4	5	6	3	4	5	6

mixup end result

	1	2	3	4	5	6	7	8	9	10	11	12
A	3+1	4+2	5+3	6+4	3+5	4+6	5+7	6+8	3+9	4+10	5+11	6+12
B	3+1	4+2	5+3	6+4	3+5	4+6	5+7	6+8	3+9	4+10	5+11	6+12
C	3+1	4+2	5+3	6+4	3+5	4+6	5+7	6+8	3+9	4+10	5+11	6+12
D	3+1	4+2	5+3	6+4	3+5	4+6	5+7	6+8	3+9	4+10	5+11	6+12

mixup I7 loading

	1	2	3	4	5	6	7	8	9	10	11	12
A	1	1	1	1	5	5	5	5	9	9	9	9
B	2	2	2	2	6	6	6	6	10	10	10	10
C	3	3	3	3	7	7	7	7	11	11	11	11
D	4	4	4	4	8	8	8	8	12	12	12	12

proper I5 loading

	1	2	3	4	5	6	7	8	9	10	11	12
A	3	3	3	3	3	3	3	3	3	3	3	3
B	4	4	4	4	4	4	4	4	4	4	4	4
C	5	5	5	5	5	5	5	5	5	5	5	5
D	6	6	6	6	6	6	6	6	6	6	6	6

mixup end result

	1	2	3	4	5	6	7	8	9	10	11	12
A	3+1	3+1	3+1	3+1	3+5	3+5	3+5	3+5	3+9	3+9	3+9	3+9
B	4+2	4+2	4+2	4+2	4+6	4+6	4+6	4+6	4+10	4+10	4+10	4+10
C	5+3	5+3	5+3	5+3	5+7	5+7	5+7	5+7	5+11	5+11	5+11	5+11
D	3+1	4+2	5+3	6+4	6+8	6+8	6+8	6+8	6+12	6+12	6+12	6+12