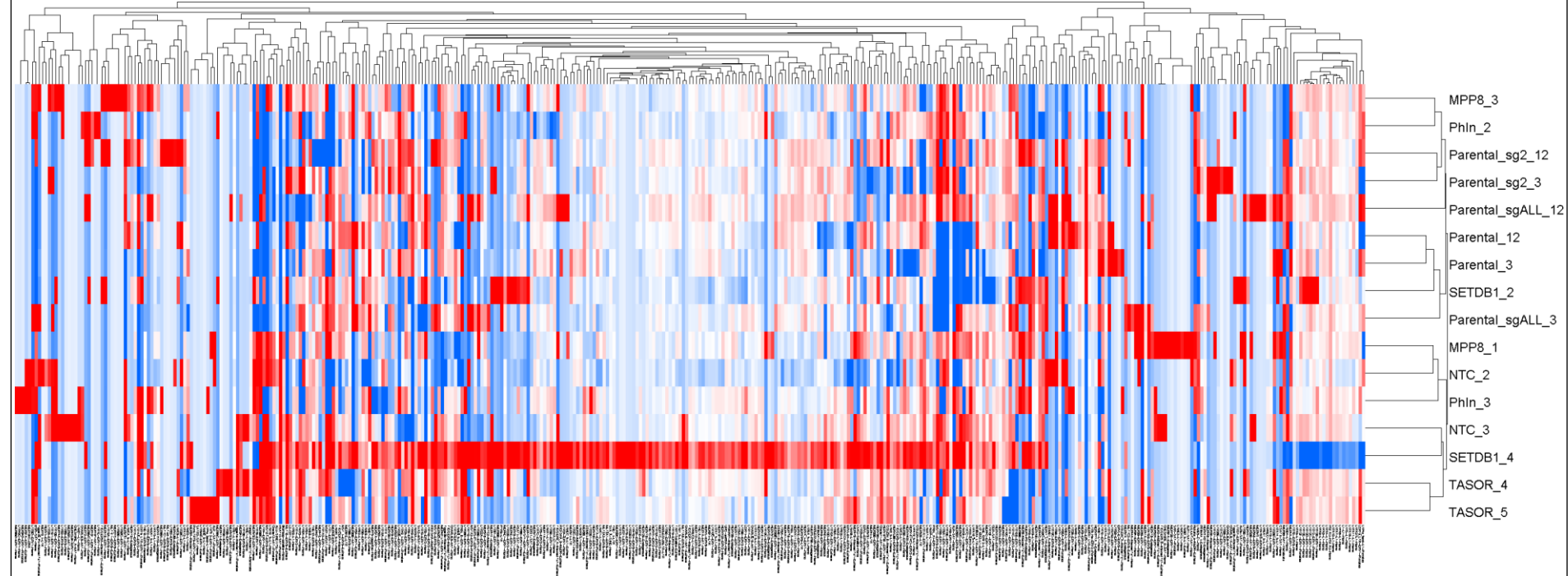


# Repeats quantification in repeat space (repBase 23.08 + eXpress TPM), RNA-seq



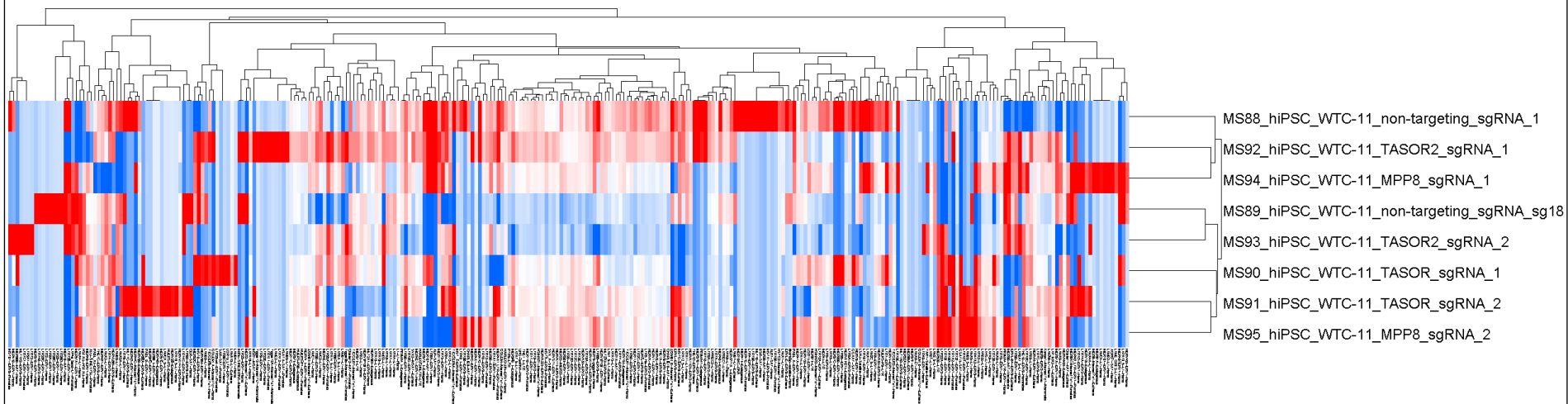
1

Note: only 0.5-1% of reads aligned to consensus repeats

# Repeats quantification in repeat space (repBase 23.08 + eXpress TPM), hiPSC RNA-seq, L1

#	WPPg_1	WPPg_3	WVC_2	WVC_3	Parental_12	Parental_3	Parental_sg2_12	Parental_sg3	Parental_sgALL_12	Parental_sgALL_3	rhIn_2	rhIn_3	REPDB1_2	REPDB1_4	ASOR_4	ASOR_5
L1-L1-Homo	51,101.76	54,603.69	30,249.36	54,181.47	42,260.99	45,812.02	46,745.16	44,347.98	57,827.31	43,436.31	53,510.02	54,488.57	48,060.84	10,322.21	58,579.88	64,937.77
LH5-L1-Homo	36,518.06	45,460.91	23,284.94	35,990.68	25,006.92	28,754.27	27,463.19	28,845.60	34,271.24	32,716.35	45,777.55	37,526.69	37,780.60	8,947.46	53,471.32	60,532.95
LIM18_5-L1-Homo	15.18	14.87	19.18	0.00	0.00	0.00	0.00	0.00	0.00	0.00	0.00	0.00	0.00	0.00	28.93	21.07
LIM1_5-L1-Eutheria	163.93	160.89	65.55	236.45	150.38	93.66	177.01	137.95	140.63	126.56	107.95	149.53	95.28	676.03	108.46	124.85
LIM2C_5-L1-Homo	57.15	24.04	20.68	50.10	45.29	40.91	19.33	39.27	37.26	41.02	27.66	47.17	28.15	66.09	17.11	46.23
LIM2_5-L1-Homo	3.92	3.85	0.00	8.76	6.22	19.66	6.19	0.00	5.16	0.00	15.96	4.12	3.87	10.75	5.48	14.81
LIMA1-L1-Homo	798.27	1,433.70	503.83	1,101.08	929.82	1,076.99	1,303.71	957.23	1,692.37	1,326.14	2,583.33	1,292.44	465.67	2,629.84	602.95	919.83
LIMA10-L1-Eutheria	0.00	0.00	0.00	0.00	0.00	0.00	0.00	0.00	0.00	0.00	0.00	0.00	0.00	0.00	0.00	0.00
LIMA2-L1-Homo	528.24	982.21	350.22	812.32	538.90	573.27	1,294.12	1,006.65	1,089.57	893.54	699.94	946.72	569.24	2,803.68	1,429.58	863.04
LIMA3-L1-Homo	774.41	904.87	861.55	593.25	584.95	1,151.32	803.65	539.16	660.66	538.01	435.81	480.11	601.20	1,990.63	613.73	593.61
LIMA4-L1-Homo	134.73	71.76	118.99	211.66	315.42	151.27	455.16	73.41	228.04	322.81	761.41	207.63	302.45	1,301.76	133.34	244.23
LIMA4A-L1-Homo	175.87	250.97	134.64	147.99	109.69	173.74	90.69	146.29	421.02	230.08	25.89	291.59	221.71	668.77	79.71	188.63
LIMAS-L1-Homo	38.50	18.85	0.01	49.73	0.03	0.01	0.00	110.12	0.01	73.86	252.77	0.00	18.90	51.11	149.74	194.70
LIMASA-L1-Homo	77.28	106.45	73.18	42.99	213.19	85.72	91.37	147.37	100.31	55.28	118.49	134.89	94.87	279.74	141.14	145.67
LIMAG-L1-Homo	180.49	162.34	0.00	21.41	0.00	285.37	256.59	114.47	74.96	55.07	28.74	164.75	70.11	529.04	40.89	161.36
LIMAA7-L1-Homo	19.47	19.06	49.15	64.96	118.60	64.58	61.37	26.05	75.80	27.85	123.76	100.06	38.23	256.21	26.97	24.46
LIMAB-L1-Homo	31.15	11.70	15.09	65.57	0.00	0.15	18.83	0.00	41.10	17.11	44.69	0.00	0.00	158.28	16.61	65.13
LIMAA9-L1-Homo	56.89	0.00	23.95	21.10	66.62	142.88	89.70	2.90	24.62	76.95	0.00	19.81	92.08	99.71	0.00	55.15
LIMB1-L1-Homo	0.01	90.16	87.14	0.00	36.25	76.14	39.50	219.05	12.21	53.65	0.00	0.00	0.00	49.28	0.00	0.00
LIMB2-L1-Homo	0.00	0.00	115.67	0.00	36.09	37.96	36.12	87.24	148.60	0.00	0.27	47.80	22.49	0.00	31.69	0.00
LIMB3-L1-Homo	135.12	102.29	0.01	100.16	106.38	68.41	106.48	42.87	87.62	108.49	0.12	69.27	130.23	154.71	164.01	62.30
LIMB3_5-L1-Homo	0.00	13.47	0.00	15.31	0.00	11.45	21.66	0.00	26.82	29.53	27.88	7.20	6.76	96.66	19.14	17.27
LIMB4-L1-Homo	0.00	0.00	0.00	50.22	106.69	0.77	35.60	42.99	29.29	32.29	0.00	0.00	0.00	0.00	31.24	28.38
LIMB5-L1-Homo	46.86	0.19	57.58	25.37	0.00	37.80	35.96	86.86	29.59	32.62	30.78	47.59	0.00	0.00	0.00	0.00
LIMB7-L1-Eutheria	0.01	4.11	0.00	50.66	35.88	141.80	1.28	0.00	29.55	97.72	60.26	95.05	22.36	10.21	0.00	0.00
LIMB8-L1-Homo	68.06	128.97	85.87	100.89	107.16	37.58	213.25	43.18	0.00	32.43	1.22	94.64	111.31	64.59	62.75	228.00
LIMC1-L1-Homo	242.49	163.00	70.05	267.46	291.56	245.48	151.31	388.04	168.05	125.42	249.71	196.43	186.21	1,081.40	307.55	343.38
LIMC2-L1-Homo	52.65	160.90	46.10	101.54	86.34	30.29	109.61	69.65	236.98	215.70	147.89	225.56	156.80	289.55	126.50	96.87
LIMD2-L1-Homo	17.93	52.70	45.30	119.74	28.28	89.31	28.27	34.23	23.29	0.00	24.22	56.21	17.62	164.65	0.00	45.08
LIME_ORF2-L1-Homo	23.87	24.99	32.24	22.72	8.07	0.00	16.07	19.58	6.64	10.60	0.00	5.35	0.00	49.68	14.22	25.63
LIP4a_Send-L1-Primates	0.00	12.92	25.00	7.34	0.00	21.96	28.15	0.00	51.47	18.89	34.99	6.91	6.48	0.00	9.18	8.28
LIPA10-L1-Homo	2,478.54	2,853.46	2,209.20	3,292.61	2,364.92	2,594.85	3,461.67	2,491.29	4,500.34	3,677.98	2,210.26	2,809.37	1,913.69	592.83	2,944.64	2,642.55
LIPA11-L1-Homo	1,403.52	1,760.66	632.56	844.92	1,976.84	881.78	673.26	1,295.98	1,611.06	1,009.26	1,171.41	1,692.83	966.69	270.84	1,826.65	1,990.86
LIPA12-L1-Homo	344.83	545.05	329.49	166.31	304.49	361.75	883.21	599.92	124.85	127.16	180.19	389.34	121.56	457.74	95.61	241.67
LIPA12_5-L1-Homo	98.56	161.19	88.63	183.24	60.72	54.84	51.84	77.36	85.65	110.00	111.28	109.22	97.07	635.86	122.67	103.34
LIPA13-L1-Homo	1,561.15	1,759.98	1,592.44	2,449.48	1,523.61	2,380.72	1,957.28	2,327.84	4,187.40	2,029.14	1,613.67	2,043.40	1,589.06	1,332.04	2,447.87	1,973.54
LIPA13_5-L1-Homo	60.89	91.32	28.89	76.38	60.24	0.00	60.04	82.75	96.53	21.83	41.22	39.92	22.48	236.51	10.61	105.31
LIPA14-L1-Homo	976.33	825.65	553.97	1,101.66	1,129.49	1,537.28	1,682.02	702.32	1,087.52	761.93	391.99	558.56	481.61	739.18	941.85	347.28
LIPA14_5-L1-Homo	10.13	0.00	0.00	0.00	24.10	0.00	0.00	0.00	13.18	0.00	0.00	0.00	19.93	0.00	0.00	19.93
LIPA15-L1-Homo	1,013.51	1,327.28	393.18	912.04	1,084.04	799.83	1,204.92	680.37	1,052.40	693.16	666.68	870.82	802.93	911.63	1,187.55	1,472.36
LIPA16-L1-Homo	1,176.90	610.32	666.01	1,205.24	868.97	1,435.04	909.68	1,652.37	1,111.21	754.78	871.67	951.44	211.59	676.25	861.18	
LIPA16_5-L1-Homo	24.21	23.76	32.72	40.51	6.39	26.95	12.73	23.28	15.78	28.95	21.87	47.36	11.92	37.80	28.18	20.31
LIPA2-L1-Homo	1,711.30	1,596.05	1,219.57	993.48	1,230.56	609.20	1,875.43	2,319.27	872.55	1,195.93	1,825.45	1,325.20	1,722.62	422.51	1,355.32	1,587.83
LIPA3-L1-Homo	8,842.84	11,912.82	7,827.01	9,108.70	5,008.57	9,700.41	10,808.84	11,271.86	8,510.02	10,248.92	6,759.11	9,907.45	6,537.82	1,419.21	8,592.50	10,445.85
LIPA4-L1-Homo	75,327.96	77,352.74	44,859.96	79,330.34	61,474.50	74,525.24	65,804.07	71,207.86	81,853.13	65,610.80	61,796.95	76,837.02	50,909.12	3,070.98	73,512.81	68,676.14
LIPA5-L1-Homo	792.23	979.26	748.13	1,218.05	779.51	1,074.27	1,193.51	779.14	879.88	872.37	1,133.62	958.46	473.74	243.46	584.31	1,430.26
LIPA6-L1-Homo	11,518.44	14,001.37	8,895.41	15,800.66	12,324.10	12,194.01	12,499.57	12,201.86	15,595.90	12,900.92	11,623.41	12,645.11	9,720.52	3,776.20	13,208.53	16,048.57
LIPA7-L1-Homo	26,512.19	25,751.31	13,607.79	28,391.26	15,361.22	14,819.81	26,391.72	20,800.63	28,723.15	19,472.64	17,635.13	25,851.76	25,691.56	4,157.64	22,566.02	27,163.48
LIPA7_5-L1-Homo	772.15	1,013.00	659.88	1,011.68	1,025.47	1,042.71	1,102.84	880.61	1,045.75	829.99	875.43	1,213.68	878.26	2,661.16	1,031.35	1,128.57
LIPA8-L1-Homo	9,770.51	8,885.16	11,753.62	7,142.94	12,663.97	12,690.82	8,478.33	14,040.28	13,524.52	9,559.39	7,678.23	9,637.42	6,140.79	834.81	14,109.52	9,771.43
LIPB1-L1-Homo	5,020.00	5,793.39	3,913.13	5,199.04	4,321.80	5,144.85	4,509.37	5,214.98	5,235.24	3,937.68	5,043.45	5,134.23	3,831.24	4,671.27	8,796.22	7,129.11
LIPB2-L1-Homo	566.46	964.26	483.14	984.79	997.24	679.53	723.34	932.32	470.18	1,498.32	819.33	551.89	544.47	1,597.29	359.14	623.09
LIPB2c-L1-Homo	1,578.73	2,015.14	1,280.90	2,270.33	1,483.45	1,670.20	1,697.64	1,697.64	1,697.64	1,629.98	1,789.97	1,976.04	1,423.81	2,445.79	1,988.68	2,144.30
LIPB3-L1-Homo	382.78	218.37	173.78	209.09	499.04	38.93	117.10	410.22	60.96	79.20	388.48	274.55	120.89	361.31	208.78	236.29
LIPB4-L1-Homo	71.02	162.15	156.13	339.90	147.59	155.27	82.52	133.79	30.39	134.02	31.62	298.50	134.04	593.10	97.22	223.93
LIPBA_5-L1-Homo	221.99	180.64	143.95	326.14	257.74	289.20	341.76	270.60	355.10	240.85	243.13	221.70	271.96	498.28	287.21	269.59
LIPREC1-L1-Homo	8,408.10	8,518.70	5,676.70	9,635.29	8,015.92	8,040.54	8,472.09	7,737.28	10,672.24	7,649.72	6,953.07	8,861.37	7,000.00	5,192.28	8,832.19	8,769.53
LIPREC2-L1-Homo	1,021.17	942.61	701.24	1,043.67	936.68	884.96	718.04	904.92	1,212.99	795.41	949.21	1,076.59	699.39	1,729.83	967.71	927.48
LIP_MA2-L1-Eutheria	116.70	98.20	90.34	116.31	115.68	52.25	81.16	138.85	103.33	124.96	64.99	102.97	63.06	190.62	125.31	99.66
L2-CR1-Eutheria	4.88	14.36	0.00	10.88	7.73	0.00	0.00	18.76	0.00	0.00	0.00	0.00	0.00	8.38	6.81	0.00

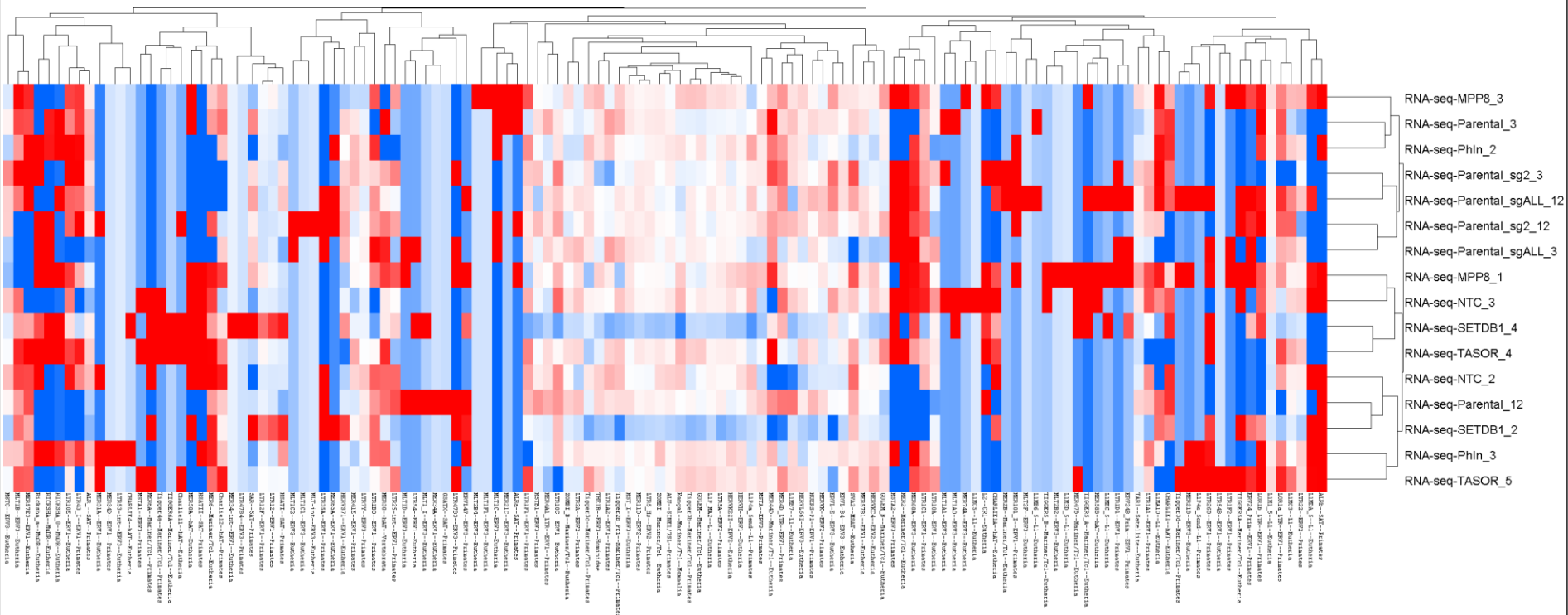
# Repeats quantification in repeat space (repBase 23.08 + eXpress TPM), hiPSC RNA-seq



# Repeats quantification in repeat space (repBase 23.08 + eXpress TPM), hiPSC RNA-seq, L1

#	MS88_hiPSC_WTC-L1_non targeting_sRNA_1	MS89_hiPSC_WTC-L1_non targeting_sRNA_sg18	MS90_hiPSC_WTC- L1_TAD02_sgRNA_1	MS91_hiPSC_WTC- L1_TAD02_sgRNA_2	MS92_hiPSC_WTC- L1_TAD02_sgRNA_1	MS93_hiPSC_WTC- L1_TAD02_sgRNA_2	MS94_hiPSC_WTC- L1_MP02_sgRNA_1	MS95_hiPSC_WTC- L1_MP02_sgRNA_2
L1-L1-Homo	15,666.22	16,005.51	12,863.39	15,355.57	19,014.30	18,065.32	14,158.44	15,688.67
L1H5-L1-Homo	39,607.69	48,997.54	79,999.55	90,588.16	64,487.66	52,244.30	84,684.45	93,773.01
L1M1_5-L1-Eutheria	74.62	40.27	44.18	106.30	106.51	21.48	54.37	117.70
L1M2_5-L1-Homo	10.35	0.00	0.00	0.00	0.00	0.00	5.09	0.00
L1M3_5-L1-Homo	0.00	4.58	0.00	0.00	0.00	4.89	5.33	5.75
L1MA1-L1-Homo	660.94	147.92	71.58	224.98	141.01	178.03	132.17	74.94
L1MA10-L1-Eutheria	0.00	0.00	1.55	0.00	0.00	0.00	0.00	0.00
L1MA2-L1-Homo	239.06	278.45	129.60	209.47	84.36	307.99	1.01	49.88
L1MA3-L1-Homo	215.59	157.42	442.23	209.88	202.04	174.30	392.83	270.11
L1MA4-L1-Homo	0.00	150.04	60.21	31.78	0.02	152.54	9.53	103.09
L1MA4A-L1-Homo	0.00	0.00	2.04	26.82	0.00	30.15	21.94	0.00
L1MA5-L1-Homo	0.00	21.43	0.00	14.22	0.20	0.00	0.00	50.97
L1MASA-L1-Homo	130.66	85.80	53.13	117.42	0.00	46.53	0.00	22.24
L1MA6-L1-Homo	34.86	64.30	38.62	225.59	390.10	92.73	139.25	223.44
L1MA7-L1-Homo	67.83	0.00	0.78	0.00	0.00	0.00	82.04	0.00
L1MA8-L1-Homo	0.00	0.00	0.00	0.02	0.00	0.00	0.00	36.09
L1MA9-L1-Homo	0.00	21.14	39.39	28.10	29.38	0.00	45.41	23.67
L1MB1-L1-Homo	0.00	0.00	24.04	14.69	69.95	27.50	29.06	29.63
L1MB2-L1-Homo	0.00	0.00	0.00	0.00	0.00	0.00	26.71	0.00
L1MB3-L1-Homo	38.79	24.83	21.94	0.00	0.00	26.93	0.00	79.17
L1MB3_5-L1-Homo	0.00	0.00	0.00	11.33	0.00	0.00	0.00	19.82
L1MB4-L1-Homo	0.00	0.00	23.74	0.00	0.00	0.00	0.00	0.00
L1MB5-L1-Homo	0.00	0.00	0.00	0.00	10.04	0.00	0.00	0.00
L1MB7-L1-Eutheria	37.15	12.55	0.00	0.00	9.96	0.00	0.00	22.72
L1MB8-L1-Homo	0.00	12.50	42.88	0.00	11.47	0.00	0.00	0.00
L1MC1-L1-Homo	239.26	103.19	174.55	196.94	340.71	201.82	280.62	193.35
L1MC2-L1-Homo	183.11	0.00	119.10	53.29	154.15	87.08	44.25	50.16
L1MC3-L1-Eutheria	0.00	0.00	0.00	0.00	0.00	0.00	0.00	0.00
L1MC4-L1-Homo	0.00	0.00	0.00	0.00	0.00	0.00	8.58	0.00
L1MCA_5-L1-Homo	0.00	0.00	0.00	10.62	0.00	0.00	0.00	0.00
L1MD2-L1-Homo	31.10	0.00	73.87	0.00	25.38	64.99	21.87	0.00
L1ME2-L1-Homo	0.00	0.00	0.00	0.00	31.39	0.00	0.00	0.00
L1ME_ORF2-L1-Homo	0.00	0.00	0.00	0.00	0.00	0.00	4.73	0.00
L1PA_Send-L1-Primates	0.00	0.00	0.00	0.00	0.00	0.00	0.00	0.00
L1PA_Send-L1-Primates	0.00	30.57	0.00	0.00	0.00	17.56	9.91	0.00
L1PA10-L1-Homo	1,028.80	1,159.32	812.39	566.28	1,700.36	910.20	1,305.57	775.31
L1PA11-L1-Homo	663.72	778.21	153.94	526.88	596.97	103.31	828.95	202.45
L1PA12-L1-Homo	112.05	8.19	182.01	376.74	111.70	115.80	153.92	0.14
L1PA12_5-L1-Homo	35.33	6.37	0.00	18.13	28.60	0.00	16.76	18.46
L1PA13-L1-Homo	737.55	429.83	504.56	209.07	649.25	646.62	592.51	355.70
L1PA13_5-L1-Homo	0.00	52.73	11.22	0.00	0.00	0.00	25.28	0.00
L1PA14-L1-Homo	491.99	312.64	388.54	93.68	209.96	182.07	195.07	549.58
L1PA14_5-L1-Homo	0.00	0.00	10.97	0.00	30.34	11.61	6.86	13.56
L1PA15-L1-Homo	1,109.85	653.40	638.43	826.85	798.25	453.20	685.06	1,086.92
L1PA16-L1-Homo	238.39	329.60	284.55	210.05	506.19	193.07	289.21	359.29
L1PA16_5-L1-Homo	0.00	0.00	0.00	12.71	0.00	0.00	0.00	0.00
L1PA2-L1-Homo	9,586.87	2,945.74	43,445.58	31,182.02	7,670.40	2,947.41	46,915.06	48,552.01
L1PA3-L1-Homo	167.61	61,211.85	21,835.19	29,286.12	13,556.13	14,780.16	23,681.44	24,752.17
L1PA4-L1-Homo	23,588.32	31,592.62	7,989.18	7,608.55	38,332.64	25,950.64	8,632.40	9,655.07
L1PA5-L1-Homo	2,305.44	517.58	1,463.33	698.23	1,072.11	804.51	1,719.08	1,538.41
L1PA6-L1-Homo	5,096.22	4,010.53	2,493.96	2,393.28	4,160.60	3,374.25	2,516.43	2,831.47
L1PA7-L1-Homo	9,072.06	10,432.37	3,900.49	4,237.65	14,907.22	10,405.83	4,105.98	4,059.92
L1PA7_5-L1-Homo	317.73	214.94	402.34	314.37	665.62	128.14	339.53	388.72
L1PA8-L1-Homo	1,967.38	4,454.40	1,114.72	1,140.94	5,426.80	4,587.88	1,300.83	1,801.98
L1PB1-L1-Homo	1,585.64	1,641.38	1,323.69	1,395.08	1,283.67	1,857.97	1,683.12	2,160.54
L1PB2-L1-Homo	860.68	943.32	630.30	210.29	1,148.09	929.55	443.73	760.24
L1PB2c-L1-Homo	592.09	524.73	891.00	946.42	737.50	605.81	967.41	1,219.73
L1PB3-L1-Homo	0.00	77.54	150.42	72.55	240.45	112.23	41.46	98.94
L1PB4-L1-Homo	101.84	0.00	29.51	52.24	94.84	33.85	21.87	0.00
L1PB4_5-L1-Homo	0.00	0.00	0.00	0.00	82.40	49.42	182.36	0.00
L1PB4_5-L1-Homo	23.06	12.59	68.37	35.27	112.03	33.62	49.85	53.45
L1PREC1-L1-Homo	2,120.71	1,746.25	1,330.82	1,155.41	2,003.44	1,557.70	1,216.50	1,414.52
L1PREC2-L1-Homo	654.93	362.97	278.28	254.88	614.14	306.39	291.59	369.19
L1P_MA2-L1-Eutheria	6.05	12.24	16.59	20.56	23.77	13.04	20.37	10.93

# Repeats quantification in repeat space (repBase 23.08 + RPKM), RNA-seq



# Repeats quantification in repeat space (repBase 23.08 + RPKM), RNA-seq, L1

#	RNA-seq-MPP8_1	RNA-seq-MPP8_3	RNA-seq-NTC_2	RNA-seq-NTC_3	RNA-seq-Parental_12	RNA-seq-Parental_3	RNA-seq-Parental_sg2_12	RNA-seq-Parental_sg2_3	RNA-seq-Parental_sgALL_12	RNA-seq-Parental_sgALL_3	RNA-seq-PhIn_2	RNA-seq-PhIn_3	RNA-seq-SETDB1_2	RNA-seq-SETDB1_4	RNA-seq-TASOR_4	RNA-seq-TASOR_5
<b>L1M1_5--L1--Eutheria</b>	6,472.91	6,406.57	3,501.67	6,422.19	4,227.42	5,221.94	5,471.78	4,356.20	5,421.97	4,094.58	5,463.16	5,732.85	3,654.36	3,640.13	3,756.85	6,640.89
<b>L1MA10--L1--Eutheria</b>	233.24	251.75	0.00	87.64	120.41	163.32	54.25	286.87	272.54	0.00	252.99	42.86	115.55	11.77	0.00	0.00
<b>L1MB6_5--L1--Eutheria</b>	0.00	0.00	0.00	0.00	0.00	306.02	0.00	0.00	204.26	0.00	0.00	0.00	0.00	0.00	0.00	0.00
<b>L1MB7--L1--Eutheria</b>	865.51	1,102.84	147.20	1,321.14	2,699.55	1,420.43	1,509.77	1,164.28	379.24	1,028.71	1,173.50	1,192.94	602.99	352.58	661.81	1,233.84
<b>L1MC3--L1--Eutheria</b>	160.32	252.35	163.61	200.80	155.19	87.71	512.72	0.00	386.38	248.55	217.38	147.32	115.83	96.91	275.83	457.11
<b>L1MC5--L1--Eutheria</b>	0.00	0.00	0.00	86.15	0.00	0.00	0.00	0.00	0.00	0.00	0.00	0.00	0.00	0.00	0.00	0.00
<b>L1MDA_5--L1--Eutheria</b>	60.04	54.01	81.70	169.20	0.00	0.00	0.00	0.00	52.62	0.00	0.00	110.34	74.37	0.00	0.00	68.48
<b>L1MEC_5--L1--Eutheria</b>	78.89	0.00	0.00	0.00	0.00	0.00	0.00	0.00	138.28	0.00	0.00	0.00	0.00	74.64	0.00	0.00
<b>L1P4a_5end--L1--Primates</b>	537.56	172.68	522.45	577.10	396.46	302.48	357.22	354.19	471.10	190.49	624.73	211.70	190.23	72.66	220.20	350.32
<b>L1P4e_5end--L1--Primates</b>	0.00	0.00	0.00	0.00	0.00	0.00	0.00	0.00	125.64	0.00	0.00	131.74	0.00	0.00	0.00	163.51
<b>L1P_MA2--L1--Eutheria</b>	3,214.08	3,774.23	3,162.29	3,226.81	3,010.79	2,557.24	2,437.64	2,907.29	3,455.91	2,864.78	2,685.43	3,561.60	1,753.29	1,737.36	3,181.80	4,230.96
<b>L2--CR1--Eutheria</b>	58.30	157.32	0.00	109.54	75.25	0.00	0.00	179.27	0.00	0.00	0.00	0.00	0.00	36.78	66.87	0.00



# Repeats quantification in repeat space (repBase 23.08 + RPKM), hiPSC RNA-seq, L1

#	MS88_RNA-seq-hiPSC_WTC-11_non-targeting_sgRNA_1	MS89_RNA-seq-hiPSC_WTC-11_non-targeting_sgRNA_sg18	MS90_RNA-seq-hiPSC_WTC-11_TASOR_sgRNA_1	MS91_RNA-seq-hiPSC_WTC-11_TASOR_sgRNA_2	MS92_RNA-seq-hiPSC_WTC-11_TASOR2_sgRNA_1	MS93_RNA-seq-hiPSC_WTC-11_TASOR2_sgRNA_2	MS94_RNA-seq-hiPSC_WTC-11_MPP8_sgRNA_1	MS95_RNA-seq-hiPSC_WTC-11_MPP8_sgRNA_2
L1M1_5--L1--Eutheria	36.29	78.54	110.38	257.82	118.56	47.22	90.65	180.55
L1MB7--L1--Eutheria	30.20	48.43	0.00	102.19	41.12	78.60	0.00	55.66
L1MC3--L1--Eutheria	11.19	0.00	14.80	0.00	6.77	14.56	0.00	23.20
L1P4a_5end--L1--Primates	5.36	0.00	177.22	308.29	9.73	27.90	211.42	118.53
L1P4e_5end--L1--Primates	0.00	48.13	0.00	0.00	0.00	52.08	26.31	0.00
L1P_MA2--L1--Eutheria	8.45	52.65	52.32	69.47	44.51	25.93	31.76	29.21