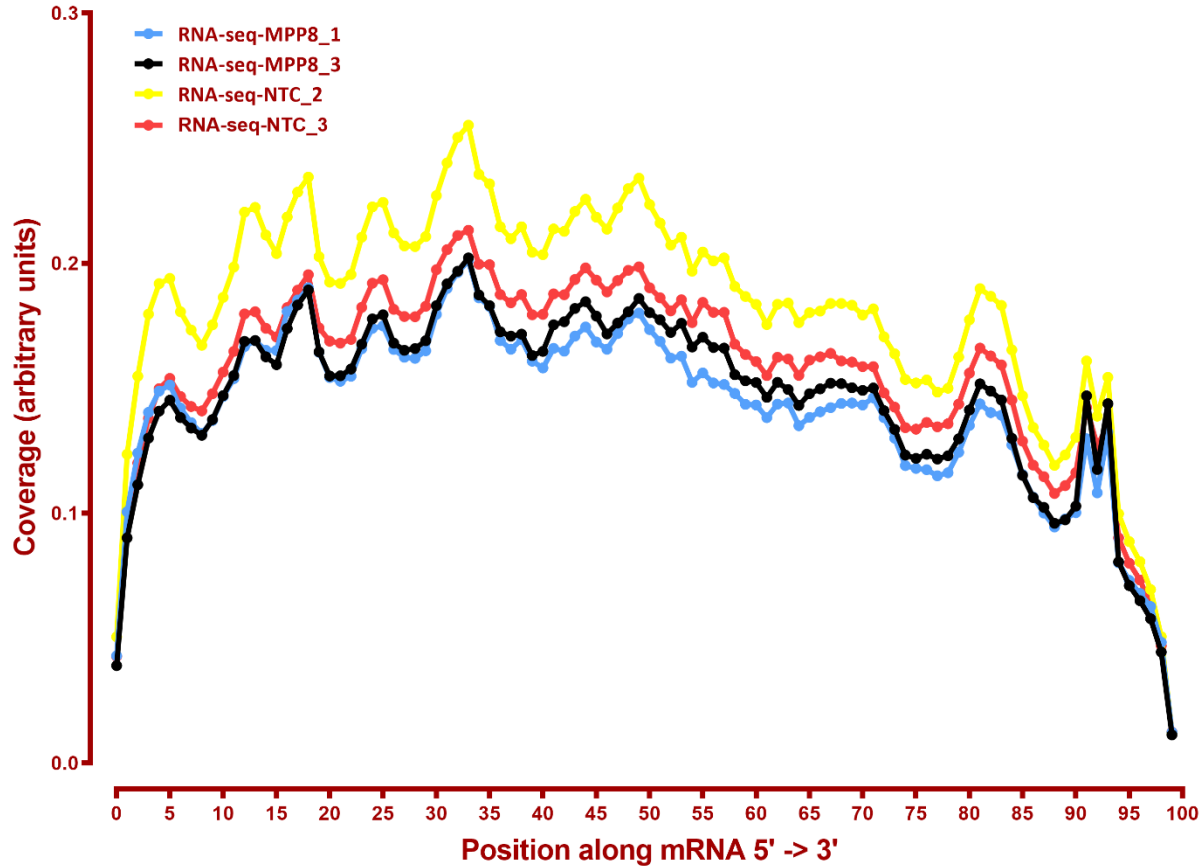


Mapping stats

Species	Assay	Read Type + Length	Mapping	#	Complexity	Unique	Unique Splices	Multi	Multi Splices	Mapped fraction	Raw fragments
hs1-T2T-CHM13v2.0	RNA-seq	2x50	STAR-2.5.3a	RNA-seq-MPP8_1	0.37	54,344,108	6,792,282	4,720,482	909,076	0.97	34,490,693
hs1-T2T-CHM13v2.0	RNA-seq	2x50	STAR-2.5.3a	RNA-seq-MPP8_3	0.37	57,428,638	7,042,118	4,735,303	941,525	0.97	36,039,526
hs1-T2T-CHM13v2.0	RNA-seq	2x50	STAR-2.5.3a	RNA-seq-NTC_2	0.34	45,239,333	7,312,411	4,079,520	866,818	0.97	29,497,689
hs1-T2T-CHM13v2.0	RNA-seq	2x50	STAR-2.5.3a	RNA-seq-NTC_3	0.36	59,427,745	8,076,289	4,352,928	944,942	0.98	37,257,765
hs1-T2T-CHM13v2.0	RNA-seq	2x50	STAR-2.5.3a	RNA-seq-Parental_12	0.37	46,450,907	6,756,015	3,725,448	788,716	0.96	30,111,192
hs1-T2T-CHM13v2.0	RNA-seq	2x50	STAR-2.5.3a	RNA-seq-Parental_3	0.39	43,506,371	6,346,013	3,270,153	715,765	0.95	28,247,695
hs1-T2T-CHM13v2.0	RNA-seq	2x50	STAR-2.5.3a	RNA-seq-Parental_sg2_12	0.39	44,404,757	6,297,927	3,456,391	753,029	0.96	28,714,497
hs1-T2T-CHM13v2.0	RNA-seq	2x50	STAR-2.5.3a	RNA-seq-Parental_sg2_3	0.40	37,328,717	5,313,909	2,806,613	596,111	0.96	23,987,967
hs1-T2T-CHM13v2.0	RNA-seq	2x50	STAR-2.5.3a	RNA-seq-Parental_sgALL_12	0.39	55,694,692	7,420,744	4,083,636	872,198	0.96	35,597,880
hs1-T2T-CHM13v2.0	RNA-seq	2x50	STAR-2.5.3a	RNA-seq-Parental_sgALL_3	0.35	50,589,051	7,490,547	3,793,358	854,046	0.96	32,652,265
hs1-T2T-CHM13v2.0	RNA-seq	2x50	STAR-2.5.3a	RNA-seq-PhIn_2	0.35	45,665,912	7,055,370	3,509,706	804,860	0.98	29,118,927
hs1-T2T-CHM13v2.0	RNA-seq	2x50	STAR-2.5.3a	RNA-seq-PhIn_3	0.35	56,849,003	7,350,237	4,561,328	924,054	0.98	35,603,531
hs1-T2T-CHM13v2.0	RNA-seq	2x50	STAR-2.5.3a	RNA-seq-SETDB1_2	0.36	49,773,340	7,272,200	4,027,692	880,608	0.94	32,818,756
hs1-T2T-CHM13v2.0	RNA-seq	2x50	STAR-2.5.3a	RNA-seq-SETDB1_4	0.36	69,197,521	8,332,255	5,496,142	1,071,810	0.97	43,223,328
hs1-T2T-CHM13v2.0	RNA-seq	2x50	STAR-2.5.3a	RNA-seq-TASOR_4	0.35	48,170,635	5,807,769	3,456,940	672,370	0.98	29,764,771
hs1-T2T-CHM13v2.0	RNA-seq	2x50	STAR-2.5.3a	RNA-seq-TASOR_5	0.38	47,469,944	6,028,110	3,511,562	688,778	0.98	29,518,861

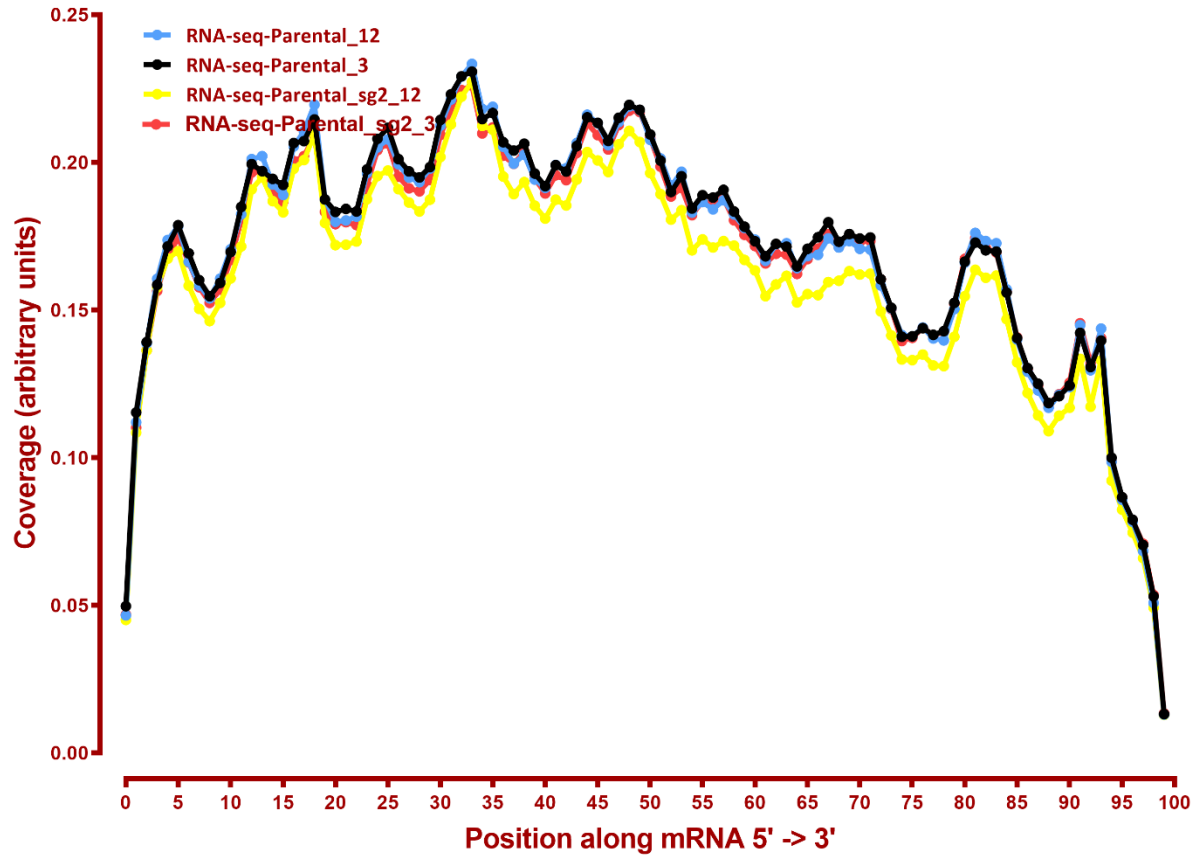
Read distribution

Coverage of genes; >1000bp



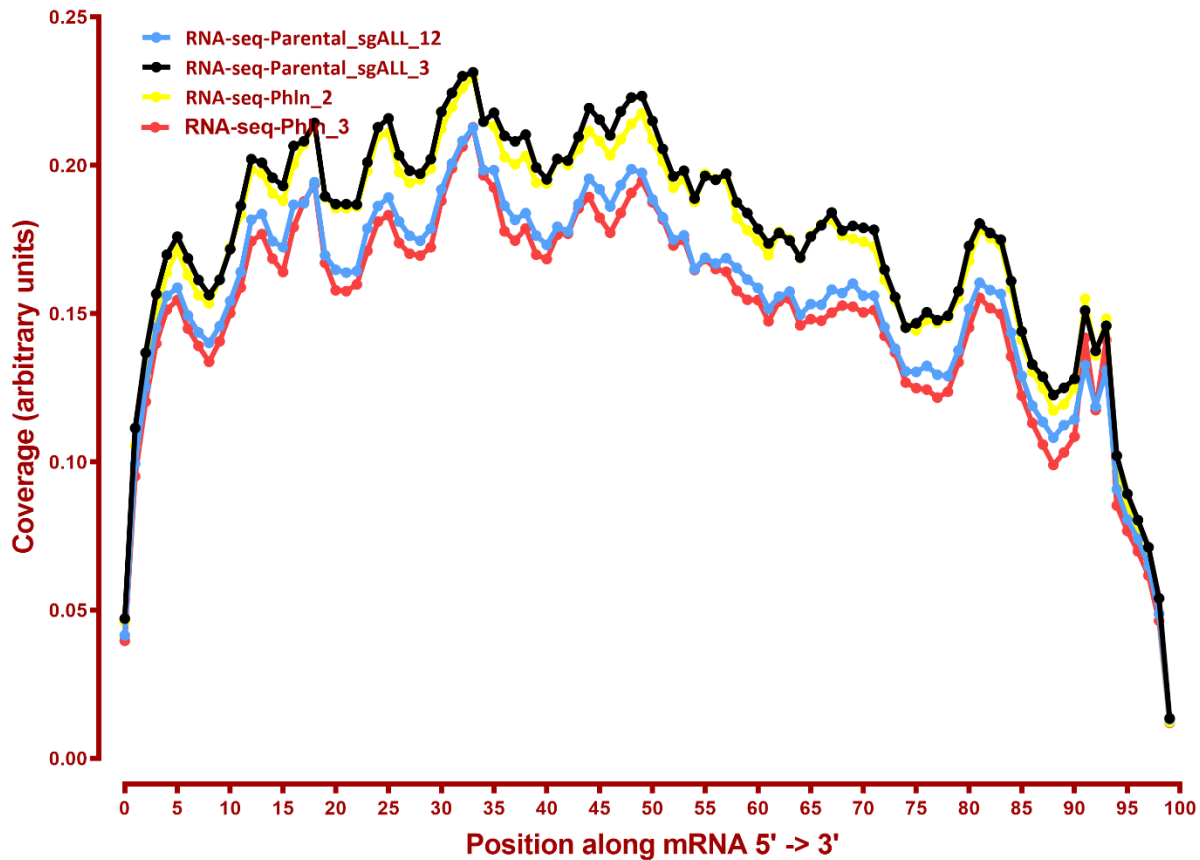
Read coverage

Coverage of genes; >1000bp



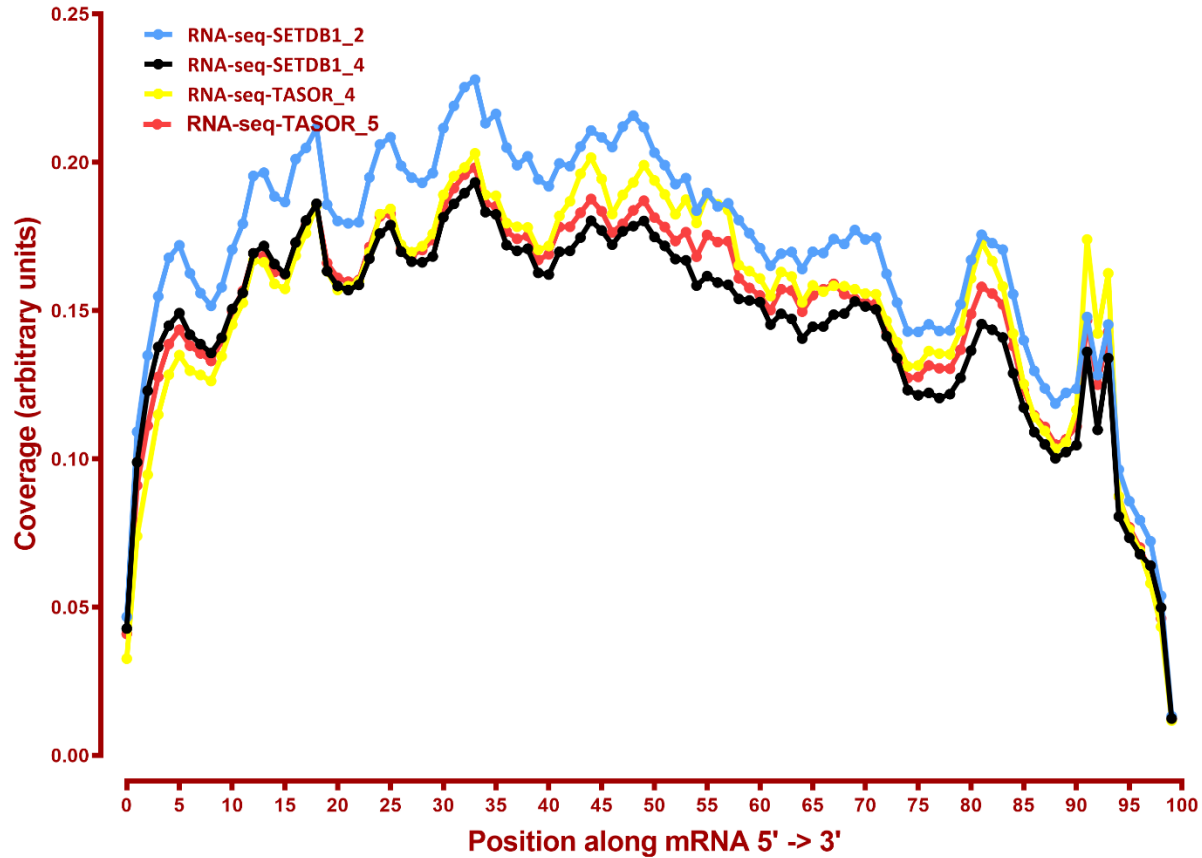
Read coverage

Coverage of genes; >1000bp



Read coverage

Coverage of genes; >1000bp



DESeq

Number differential genes

A	B	p-adj		p-val	
		up in B vs A	down in B vs A	up in B vs A	down in B vs A
MPP8	NTC	9	8	39	113
MPP8	Phln	5	1	107	29
MPP8	SETDB1	201	29	680	181
MPP8	TASOR2_Parental	141	51	626	416
MPP8	TASOR2_Parental_sg2	104	18	798	290
MPP8	TASOR2_Parental_sgALL	143	40	618	313
MPP8	TASOR	8	9	63	113
NTC	Phln	3	2	106	14
NTC	SETDB1	202	29	757	158
NTC	TASOR2_Parental	111	30	531	225
NTC	TASOR2_Parental_sg2	83	12	923	214
NTC	TASOR2_Parental_sgALL	121	28	533	185
NTC	TASOR	4	6	52	39
Phln	SETDB1	127	29	474	181
Phln	TASOR	3	10	34	123
SETDB1	TASOR	28	184	181	719
TASOR2_Parental_sg2	Phln	9	44	224	524
TASOR2_Parental_sg2	SETDB1	10	2	133	180
TASOR2_Parental_sg2	TASOR2_Parental_sgALL	0	0	9	247
TASOR2_Parental_sg2	TASOR	13	81	368	977
TASOR2_Parental_sgALL	Phln	26	51	227	320
TASOR2_Parental_sgALL	SETDB1	53	8	246	66
TASOR2_Parental_sgALL	TASOR	29	94	275	548
TASOR2_Parental	Phln	30	55	295	325
TASOR2_Parental	SETDB1	53	7	309	71
TASOR2_Parental	TASOR2_Parental_sg2	0	0	313	10
TASOR2_Parental	TASOR2_Parental_sgALL	0	0	12	6
TASOR2_Parental	TASOR	39	100	376	577

GO enrichment, NTC-vs-Phln down, p-adj

None

GO enrichment, NTC-vs-Phln up, p-adj

None

GO enrichment, NTC-vs-SETDB1 down, p-adj

None

GO enrichment, NTC-vs-SETDB1 up, p-adj

N	X	LOD	P	P_adj	attrib ID	attrib name
7	28	1.507676	1.78E-08	<0.001	GO:0016339	calcium-dependent cell-cell adhesion via plasma membrane cell adhesion molecules
8	56	1.210307	1.76E-07	<0.001	GO:0007416	synapse assembly
17	143	1.126269	3.80E-13	<0.001	GO:0007156	homophilic cell adhesion via plasma membrane adhesion molecules
17	207	0.946912	1.51E-10	<0.001	GO:0098742	cell-cell adhesion via plasma-membrane adhesion molecules
25	575	0.659858	5.48E-09	<0.001	GO:0098609	cell-cell adhesion
21	630	0.530396	7.08E-06	0.028	GO:0005509	calcium ion binding
29	960	0.495059	8.32E-07	0.002	GO:0007155	cell adhesion
29	966	0.492118	9.44E-07	0.002	GO:0022610	biological adhesion
74	4003	0.319073	1.21E-06	0.003	GO:0043169	cation binding
73	3942	0.31836	1.40E-06	0.005	GO:0046872	metal ion binding
93	5819	0.264595	1.63E-05	0.049	GO:0043167	ion binding

GO enrichment, NTC-vs-TASOR down, p-adj

None

GO enrichment, NTC-vs-TASOR up, p-adj

None

GO enrichment, NTC-vs-TASOR2_Parental down, p-adj

None

GO enrichment, NTC-vs-TASOR2_Parental up, p-adj

None

GO enrichment, NTC-vs-TASOR2_Parental_sg2 down, p-adj

None

GO enrichment, NTC-vs-TASOR2_Parental_sg2 up, p-adj

None

GO enrichment, NTC-vs-TASOR2_Parental_sgALL down, p-adj

None

GO enrichment, NTC-vs-TASOR2_Parental_sgALL up, p-adj

None