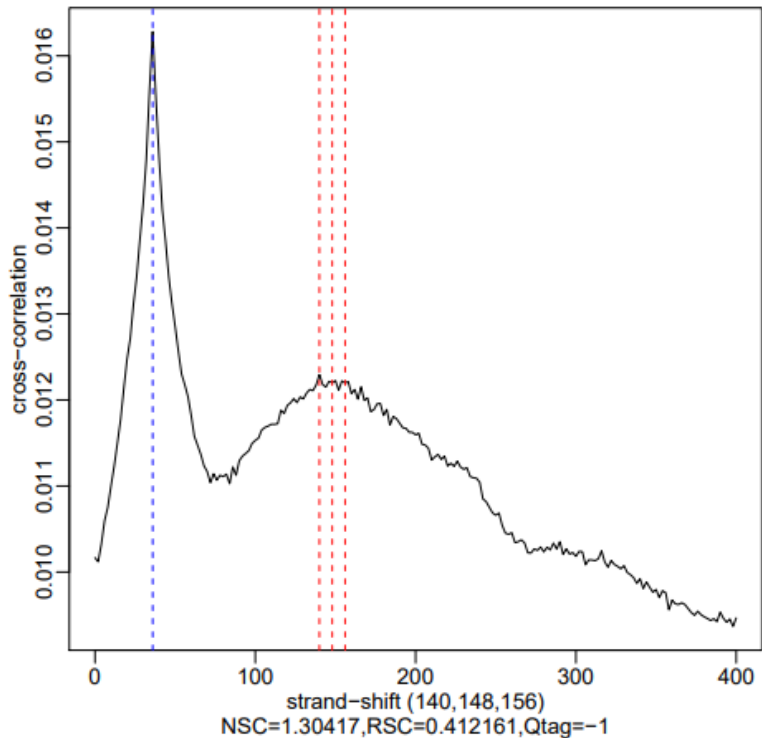


Dataset stats

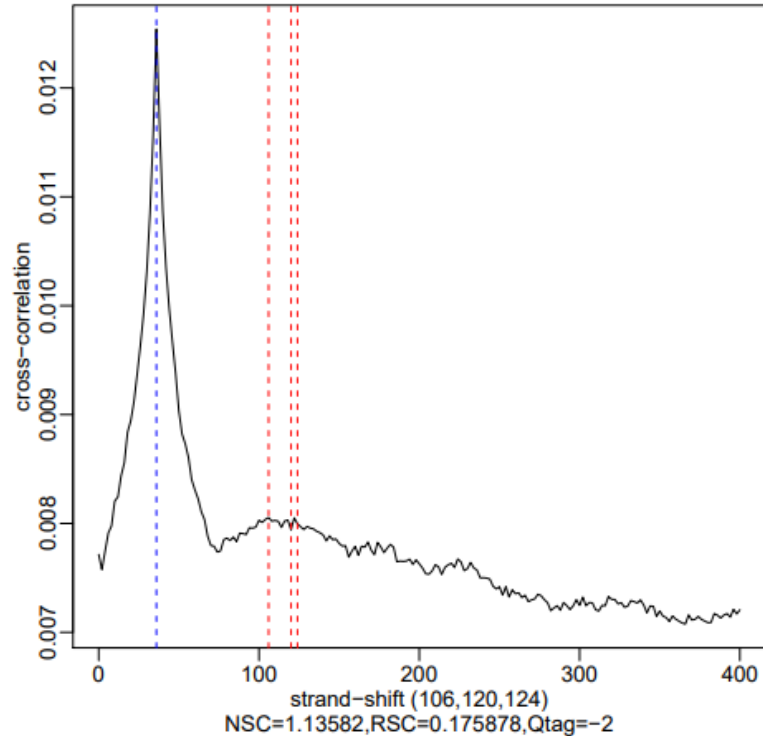
Species	#	Read Length	Raw fragments	Unique	Complexity	MACS2 NumPeaks, noBL	MACS2, noBL RPM	NSC	RSC	QC
supplied mapping	DDX50_H1_chip	2x150 BWT	N/A	29,608,873	0.79	0	0			
supplied mapping	DDX50_H1_input	2x150 BWT	N/A	22,028,070	0.78					
supplied mapping	DDX50_H2_chip	2x150 BWT	N/A	31,725,896	0.78	3	21			
supplied mapping	DDX50_H2_input	2x150 BWT	N/A	29,092,321	0.75					
supplied mapping	DDX50_L1_chip	2x150 BWT	N/A	40,354,158	0.77	1	1			
supplied mapping	DDX50_L1_input	2x150 BWT	N/A	24,699,203	0.68					
supplied mapping	DDX50_L2_chip	2x150 BWT	N/A	31,376,289	0.77	0	0			
supplied mapping	DDX50_L2_input	2x150 BWT	N/A	26,074,018	0.79					
supplied mapping	DDX50_P1_chip	2x150 BWT	N/A	36,795,954	0.76	0	0			
supplied mapping	DDX50_P1_input	2x150 BWT	N/A	30,527,213	0.79					
supplied mapping	DDX50_P2_chip	2x150 BWT	N/A	39,022,761	0.75	0	0			
supplied mapping	DDX50_P2_input	2x150 BWT	N/A	21,581,189	0.73					
supplied mapping	IFI16_D1_chip	2x150 BWT	N/A	37,197,574	0.77	17,848	37,880			
supplied mapping	IFI16_D1_input	2x150 BWT	N/A	33,707,646	0.73					
supplied mapping	IFI16_D2_chip	2x150 BWT	N/A	37,719,673	0.77	449	733			
supplied mapping	IFI16_D2_input	2x150 BWT	N/A	34,924,468	0.75					
supplied mapping	IFI16_P1_chip	2x150 BWT	N/A	37,335,783	0.77	0	0			
supplied mapping	IFI16_P1_input	2x150 BWT	N/A	18,402,083	0.66					
supplied mapping	IFI16_P2_chip	2x150 BWT	N/A	37,362,575	0.75	0	0			
supplied mapping	IFI16_P2_input	2x150 BWT	N/A	23,088,336	0.75					
hg38-male	DDX50_H1_chip	1x36						1.136	0.176	-2
hg38-male	DDX50_H1_input	1x36						1.304	0.412	-1
hg38-male	DDX50_H2_chip	1x36						1.116	0.130	-2
hg38-male	DDX50_H2_input	1x36						1.148	0.163	-2
hg38-male	DDX50_L1_chip	1x36						1.104	0.174	-2
hg38-male	DDX50_L1_input	1x36						1.312	0.539	0
hg38-male	DDX50_L2_chip	1x36						1.133	0.140	-2
hg38-male	DDX50_L2_input	1x36						1.145	0.150	-2
hg38-male	DDX50_P1_input	1x36						1.122	0.180	-2
hg38-male	DDX50_P1_nchip	1x36						1.136	0.183	-2
hg38-male	DDX50_P2_chip	1x36						1.139	0.174	-2
hg38-male	DDX50_P2_input	1x36						1.368	0.590	0
hg38-male	IFI16_D1_chip	1x36						1.139	0.296	-1
hg38-male	IFI16_D1_input	1x36						1.181	0.312	-1
hg38-male	IFI16_D2_chip	1x36						1.103	0.172	-2
hg38-male	IFI16_D2_input	1x36						1.156	0.265	-1
hg38-male	IFI16_P1_chip	1x36						1.108	0.151	-2
hg38-male	IFI16_P1_input	1x36						1.423	0.797	0
hg38-male	IFI16_P2_chip	1x36						1.136	0.186	-2
hg38-male	IFI16_P2_input	1x36						1.244	0.361	-1

Cross-correlation (properly done)

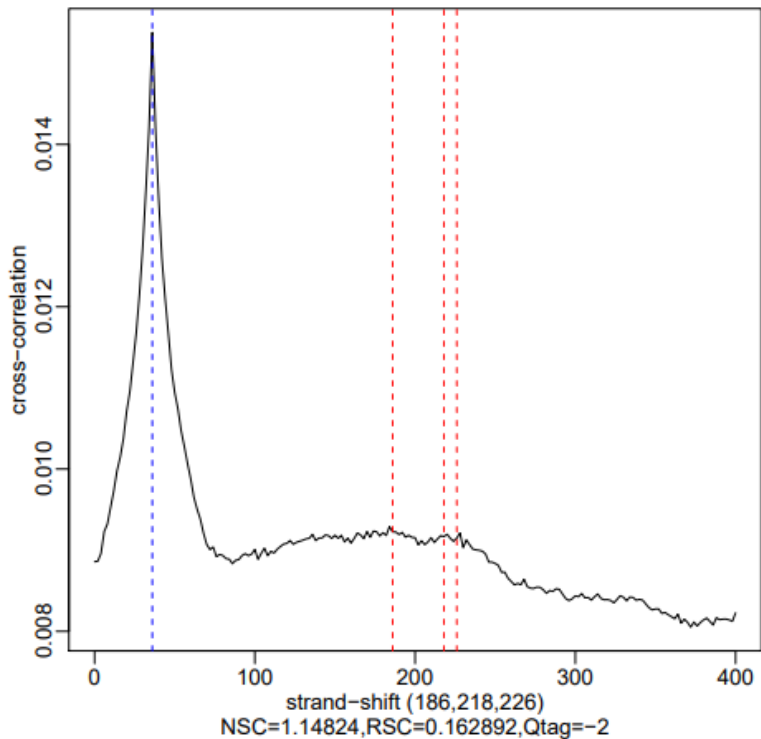
DDX50_H1_input.mapped.end1.1x36mers.hg38-male.unique.



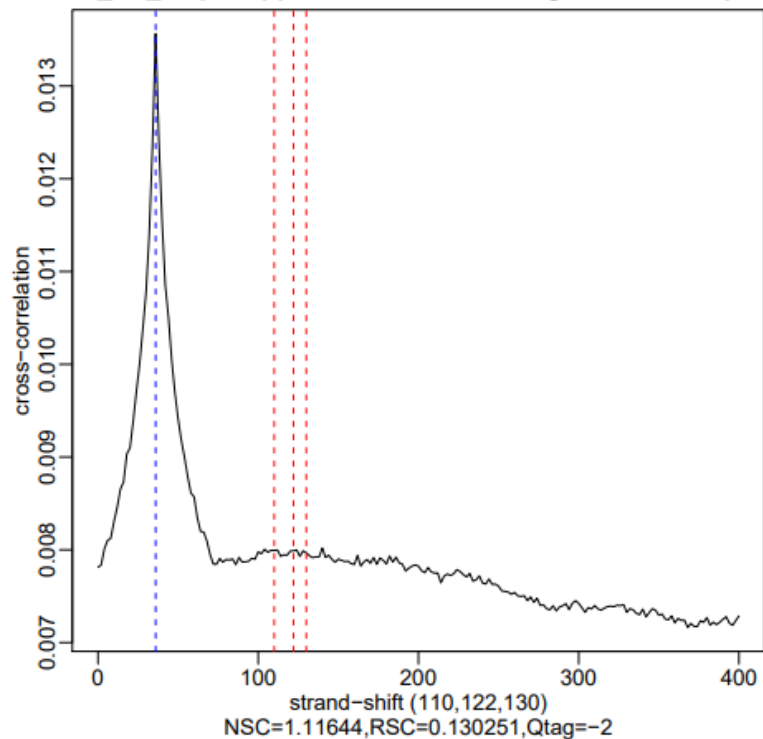
DDX50_H1_chip.mapped.end1.1x36mers.hg38-male.unique.



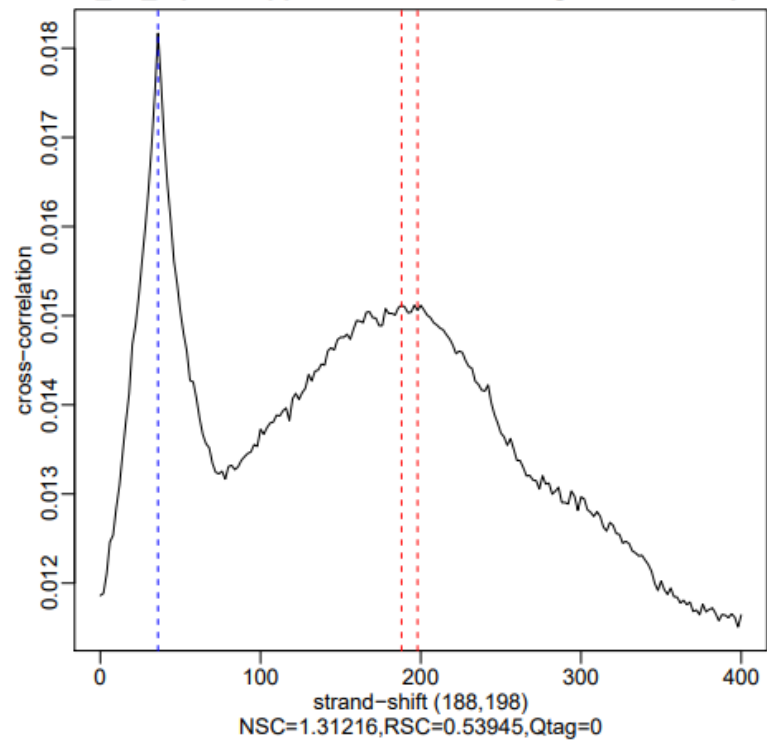
DDX50_H2_input.mapped.end1.1x36mers.hg38-male.unique.



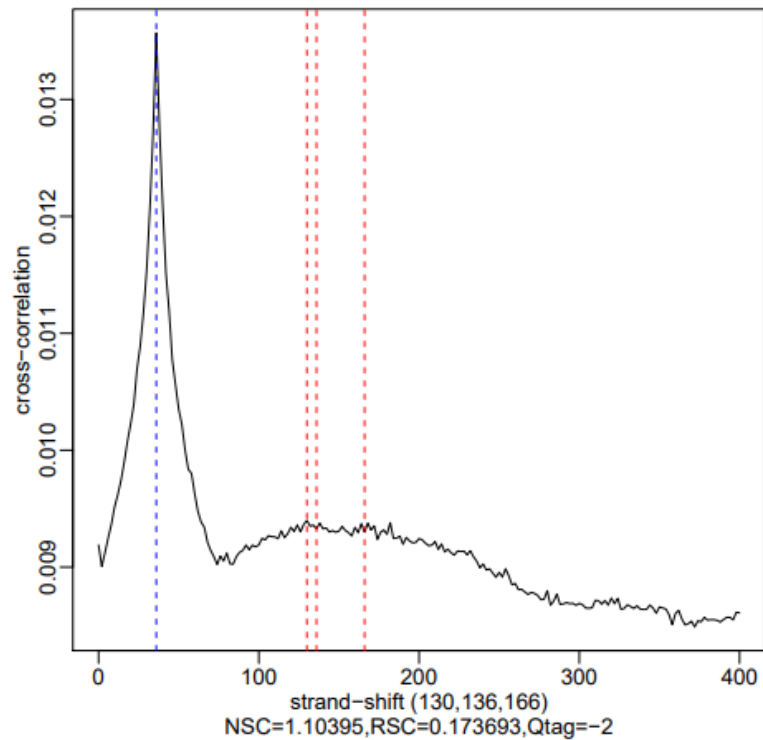
DDX50_H2_chip.mapped.end1.1x36mers.hg38-male.unique.l



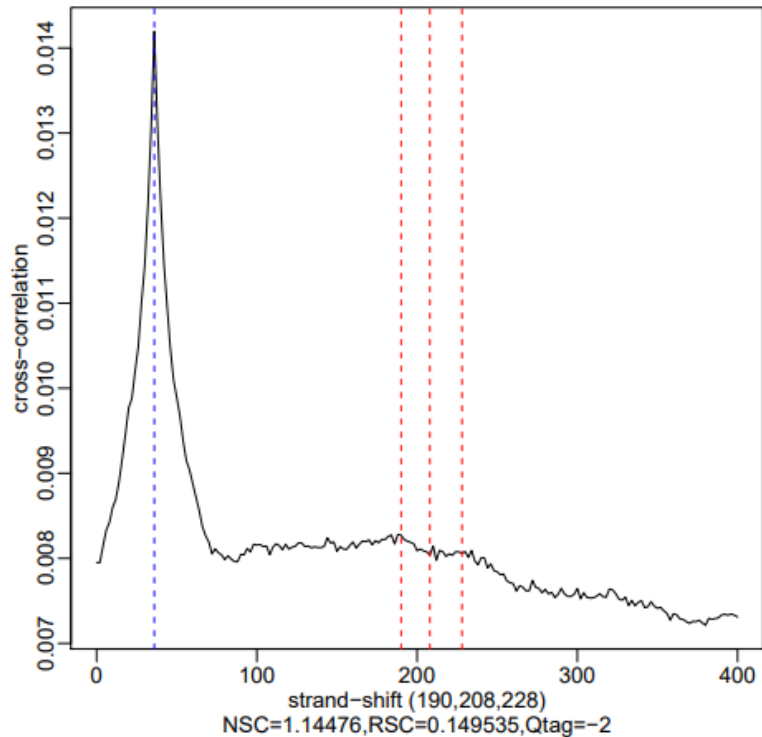
DDX50_L1_input.mapped.end1.1x36mers.hg38-male.unique.



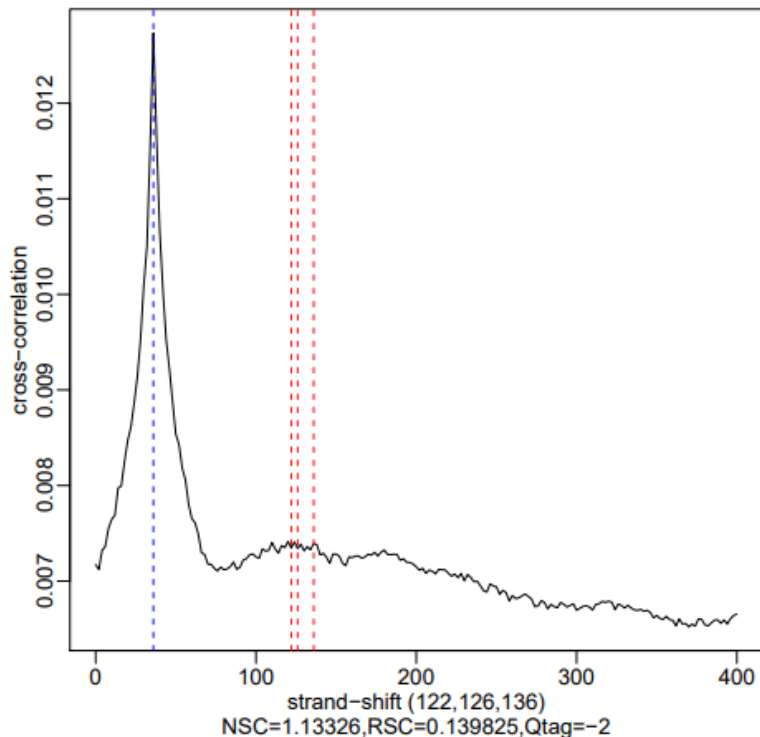
DDX50_L1_chip.mapped.end1.1x36mers.hg38-male.unique.



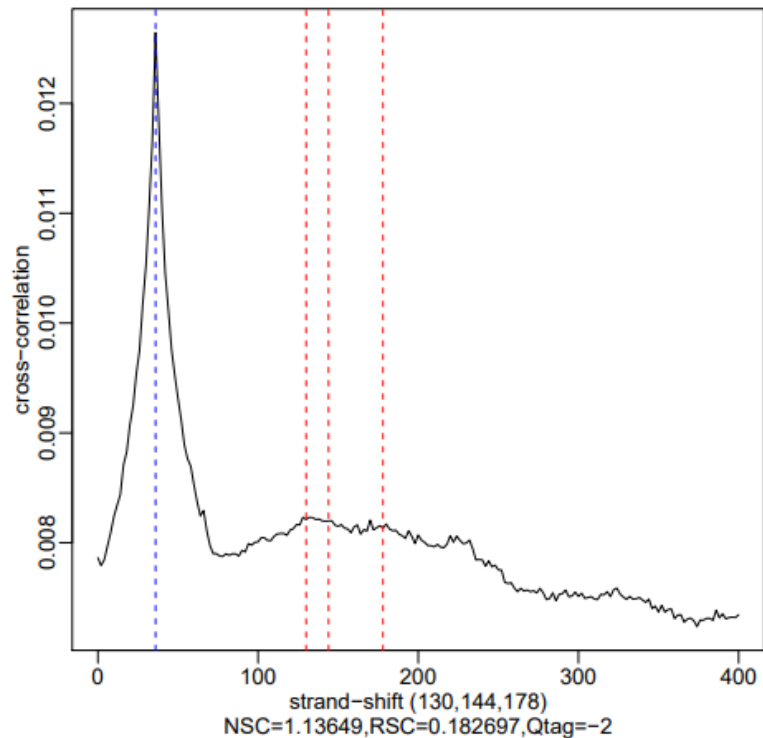
DDX50_L2_input.mapped.end1.1x36mers.hg38-male.unique



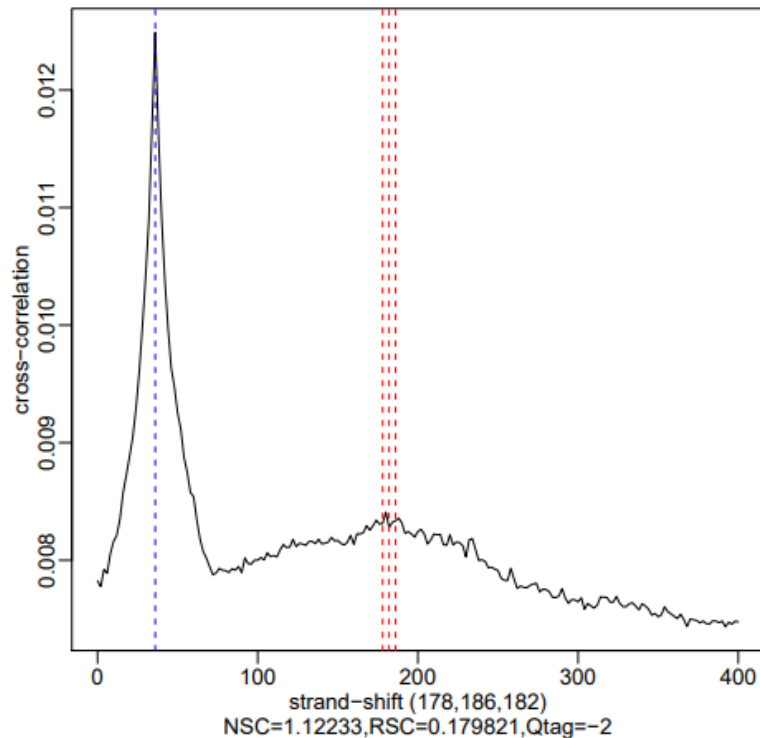
DDX50_L2_chip.mapped.end1.1x36mers.hg38-male.unique



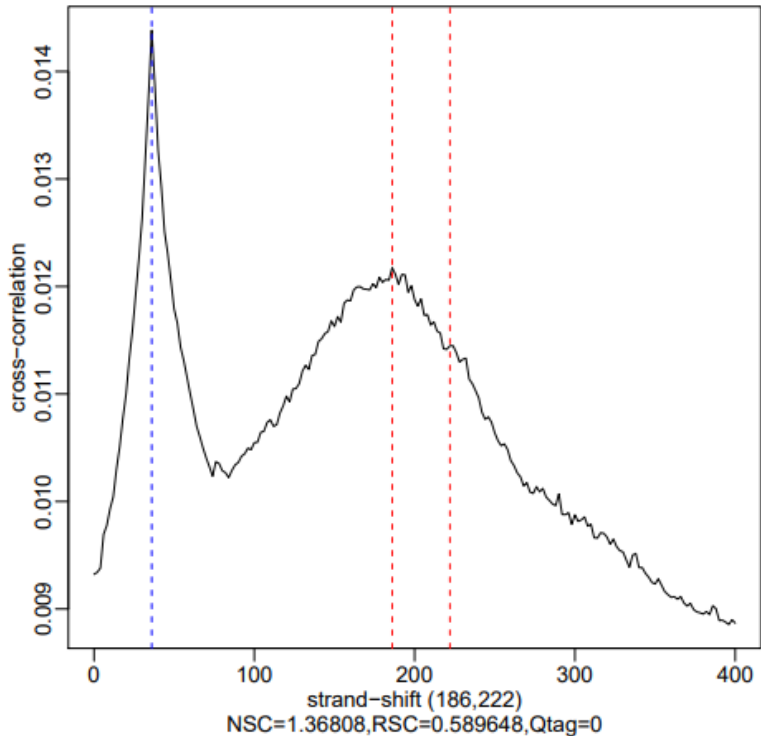
DDX50_P1_input.mapped.end1.1x36mers.hg38-male.unique.



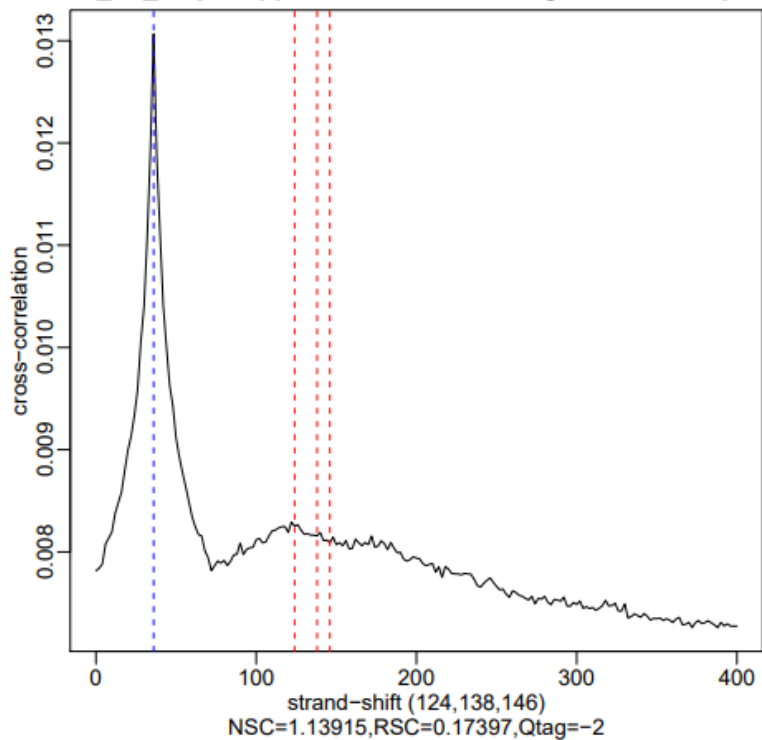
DDX50_P1_chip.mapped.end1.1x36mers.hg38-male.unique.



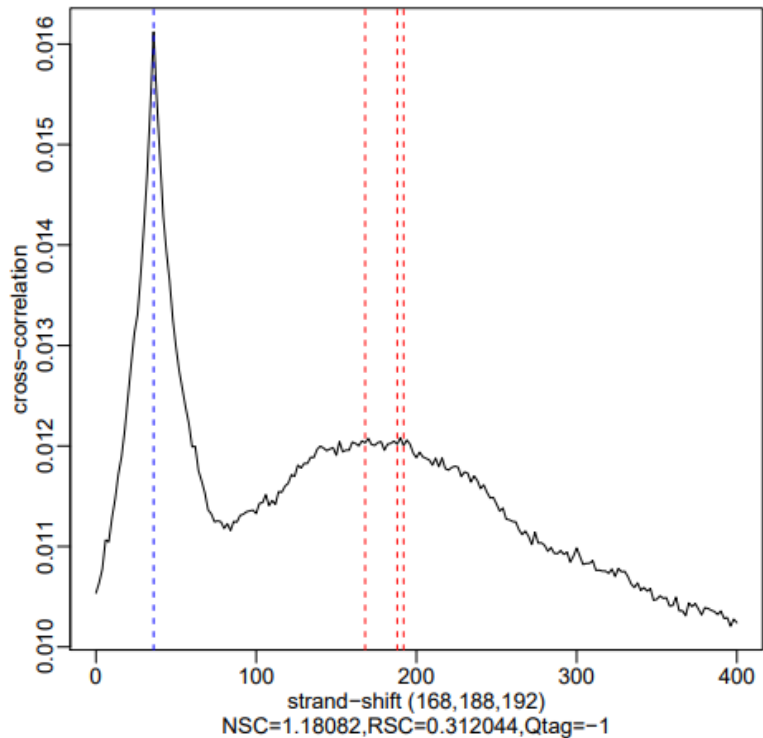
DDX50_P2_input.mapped.end1.1x36mers.hg38-male.unique.



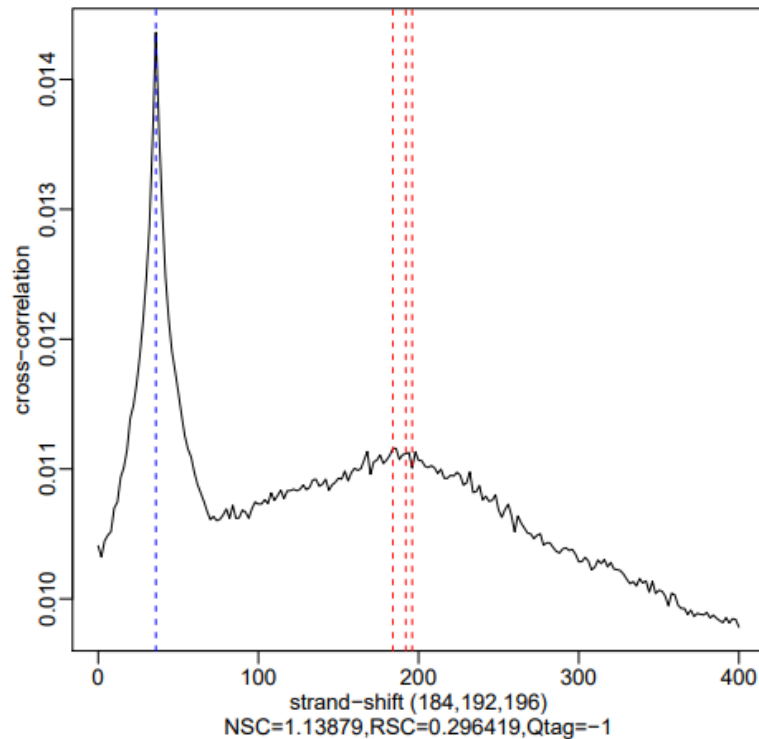
DDX50_P2_chip.mapped.end1.1x36mers.hg38-male.unique.l



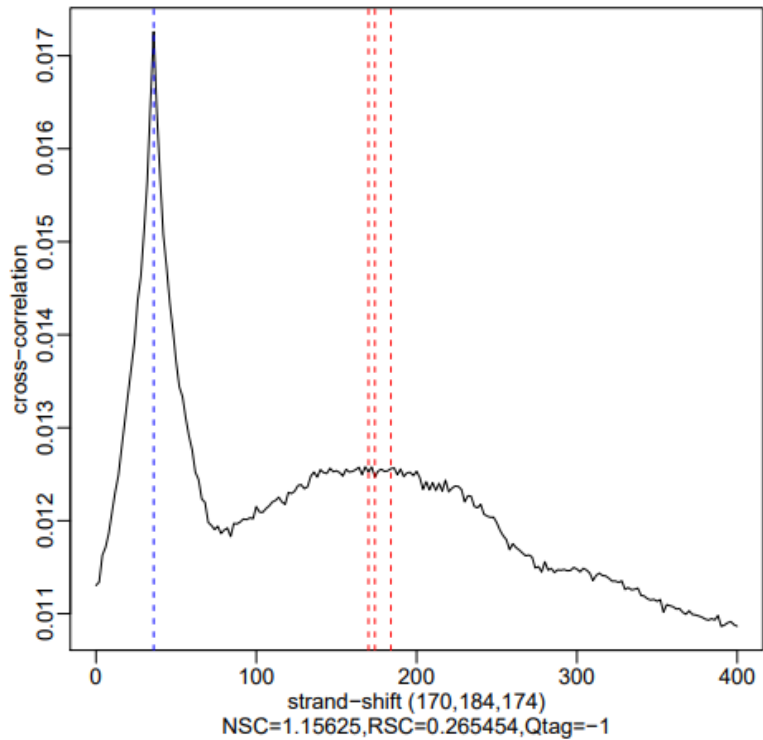
IFI16_D1_input.mapped.end1.1x36mers.hg38-male.unique.l



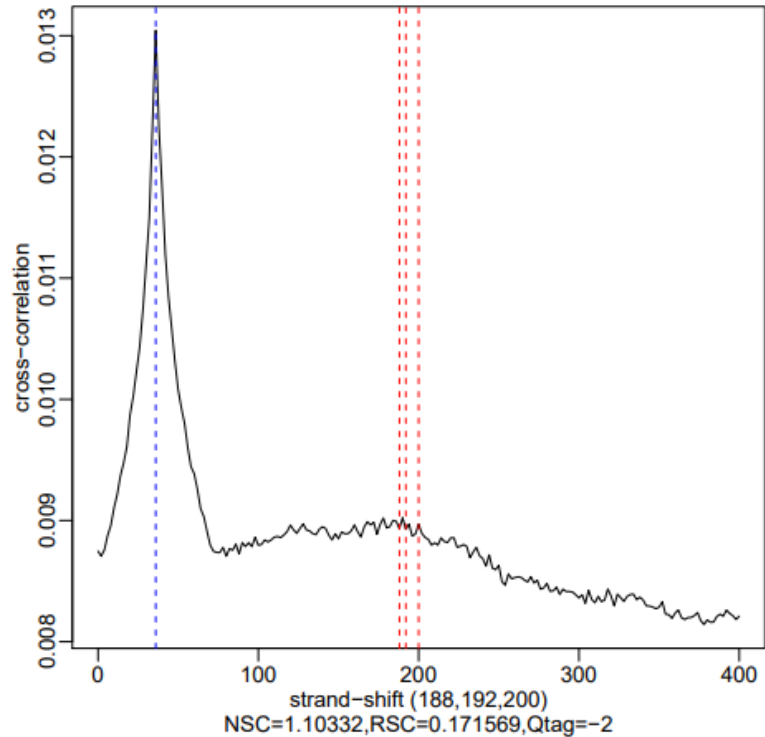
IFI16_D1_chip.mapped.end1.1x36mers.hg38-male.unique.b



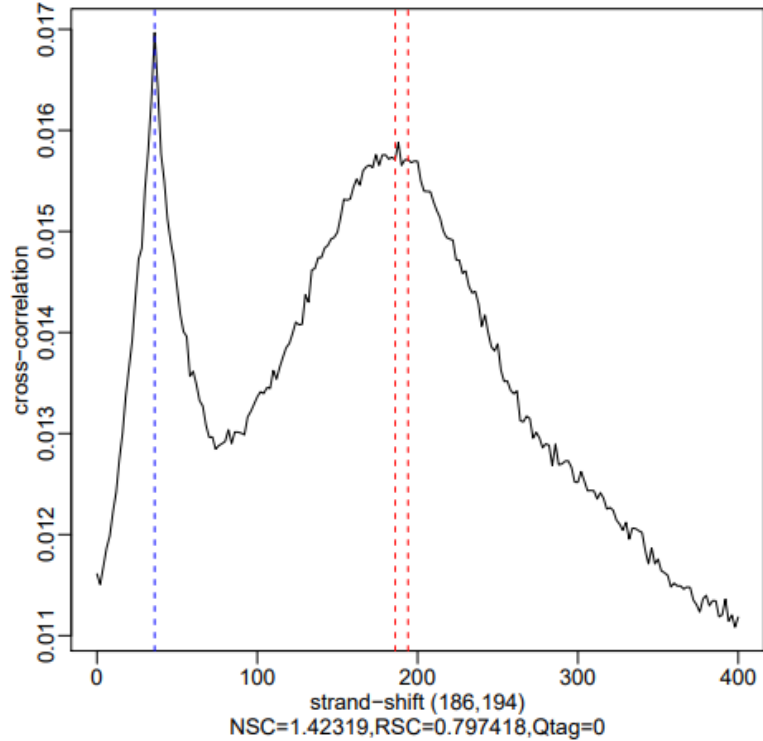
IFI16_D2_input.mapped.end1.1x36mers.hg38-male.unique.t



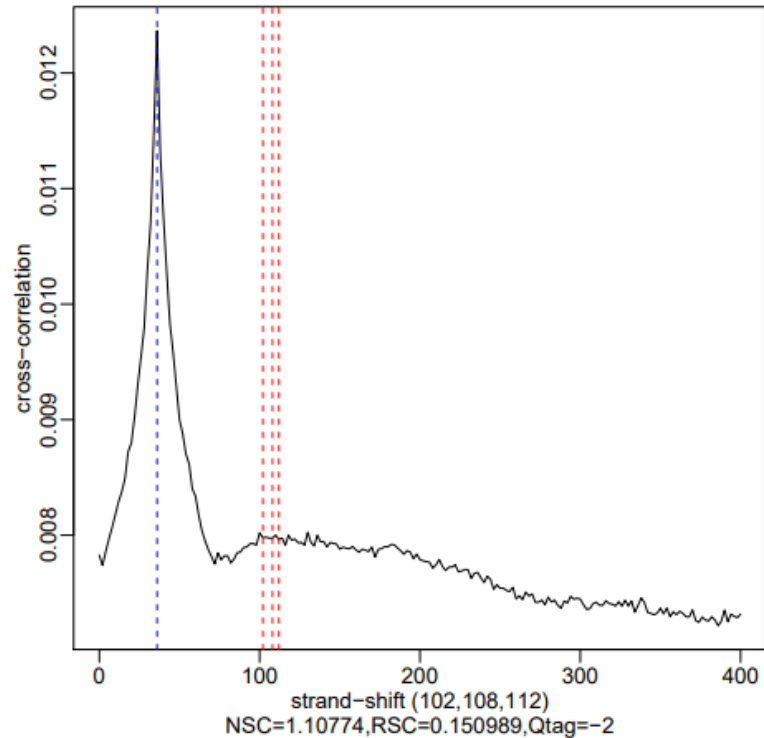
IFI16_D2_chip.mapped.end1.1x36mers.hg38-male.unique.b



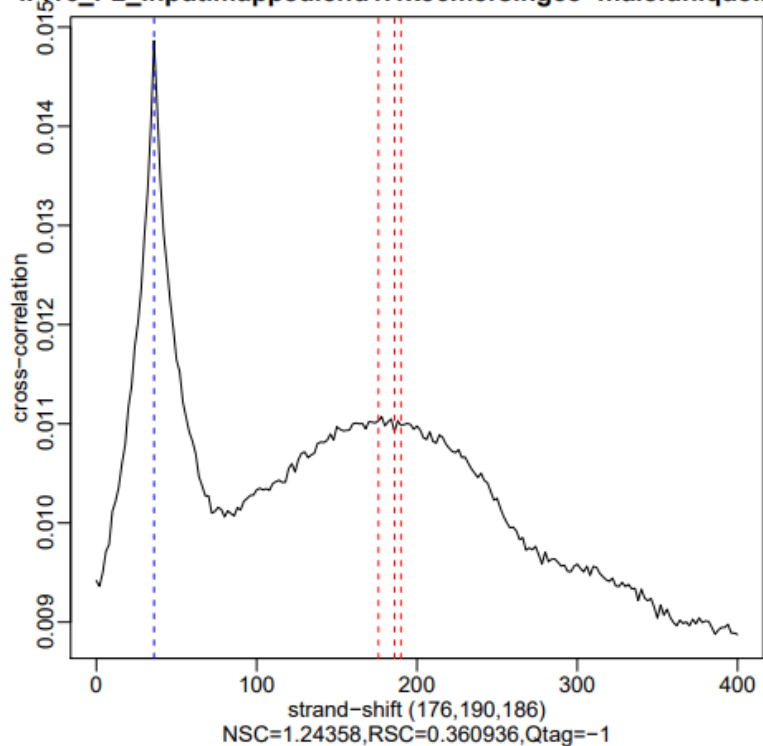
IFI16_P1_input.mapped.end1.1x36mers.hg38-male.unique.t



IFI16_P1_chip.mapped.end1.1x36mers.hg38-male.unique.b



IF16_P2_input.mapped.end1.1x36mers.hg38-male.unique.t



IF16_P2_chip.mapped.end1.1x36mers.hg38-male.unique.b

