

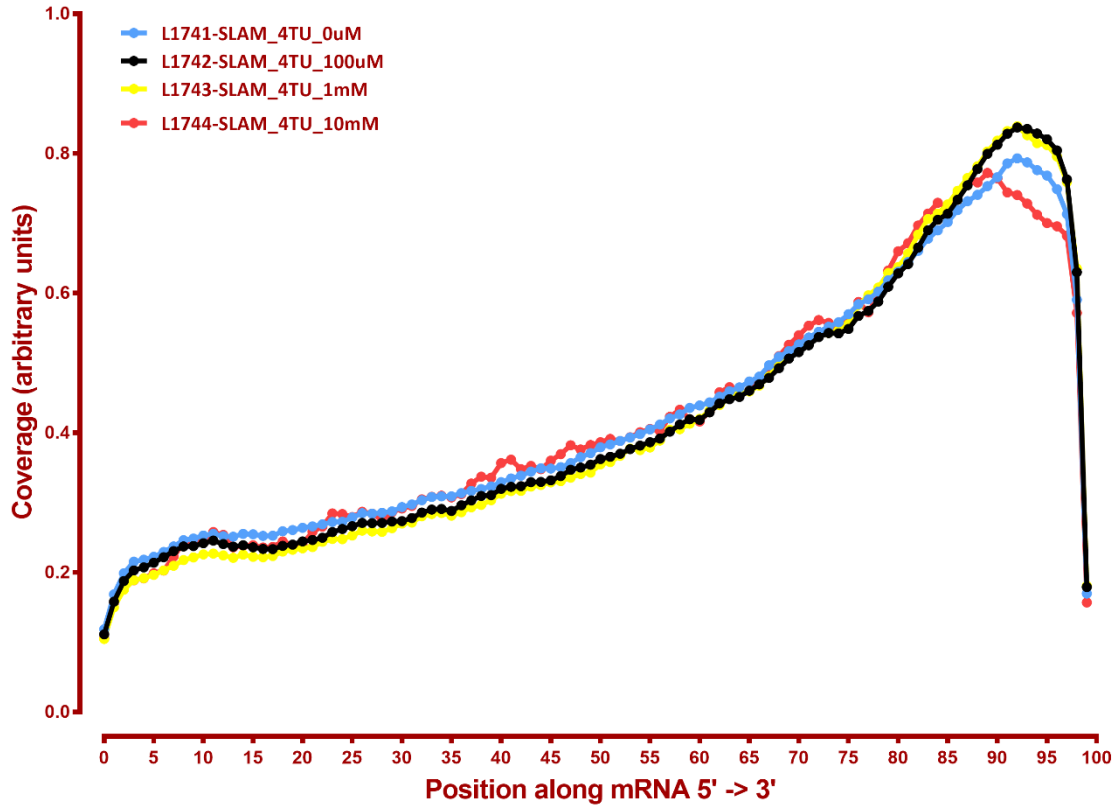
Dataset stats

Species	Assay	Read Type + Length	Mapping	#	Complexity	Unique	Unique Splices	Multi	Multi Splices	Mapped fraction	Raw fragments
nium_minutum_Clade_B1_Ve	SLAM-seq	2x38	STAR-2.5.3.a	L1737-SLAM_4SU_0uM	0.62	10,837,873	4,640,525	2,079,870	650,204	0.71	12,886,997
nium_minutum_Clade_B1_Ve	SLAM-seq	2x38	STAR-2.5.3.a	L1738-SLAM_4SU_100uM	0.69	9,466,605	4,488,255	1,452,323	625,883	0.84	9,578,548
nium_minutum_Clade_B1_Ve	SLAM-seq	2x38	STAR-2.5.3.a	L1739-SLAM_4SU_1mM	0.42	2,922,302	1,230,882	438,335	170,977	0.55	4,360,944
nium_minutum_Clade_B1_Ve	SLAM-seq	2x38	STAR-2.5.3.a	L1740-SLAM_4SU_10mM	0.66	1,771,065	717,567	315,810	102,300	0.75	1,943,991
nium_minutum_Clade_B1_Ve	SLAM-seq	2x38	STAR-2.5.3.a	L1741-SLAM_4TU_0uM	0.43	5,933,707	2,586,305	980,924	360,948	0.60	8,177,289
nium_minutum_Clade_B1_Ve	SLAM-seq	2x38	STAR-2.5.3.a	L1742-SLAM_4TU_100uM	0.47	6,662,928	2,692,500	1,170,775	384,093	0.57	9,548,084
nium_minutum_Clade_B1_Ve	SLAM-seq	2x38	STAR-2.5.3.a	L1743-SLAM_4TU_1mM	0.40	3,201,888	1,267,286	534,745	177,469	0.62	4,162,883
nium_minutum_Clade_B1_Ve	SLAM-seq	2x38	STAR-2.5.3.a	L1744-SLAM_4TU_10mM	0.36	4,330,186	1,640,698	1,013,564	236,394	0.69	5,269,320

#	Exonic:	Intergenic:	Intronic:
L1737-SLAM_4SU_0uM	0.81	0.11	0.08
L1738-SLAM_4SU_100uM	0.83	0.09	0.08
L1739-SLAM_4SU_1mM	0.81	0.11	0.09
L1740-SLAM_4SU_10mM	0.82	0.10	0.08
L1741-SLAM_4TU_0uM	0.80	0.11	0.09
L1742-SLAM_4TU_100uM	0.79	0.12	0.09
L1743-SLAM_4TU_1mM	0.79	0.11	0.10
L1744-SLAM_4TU_10mM	0.80	0.11	0.09

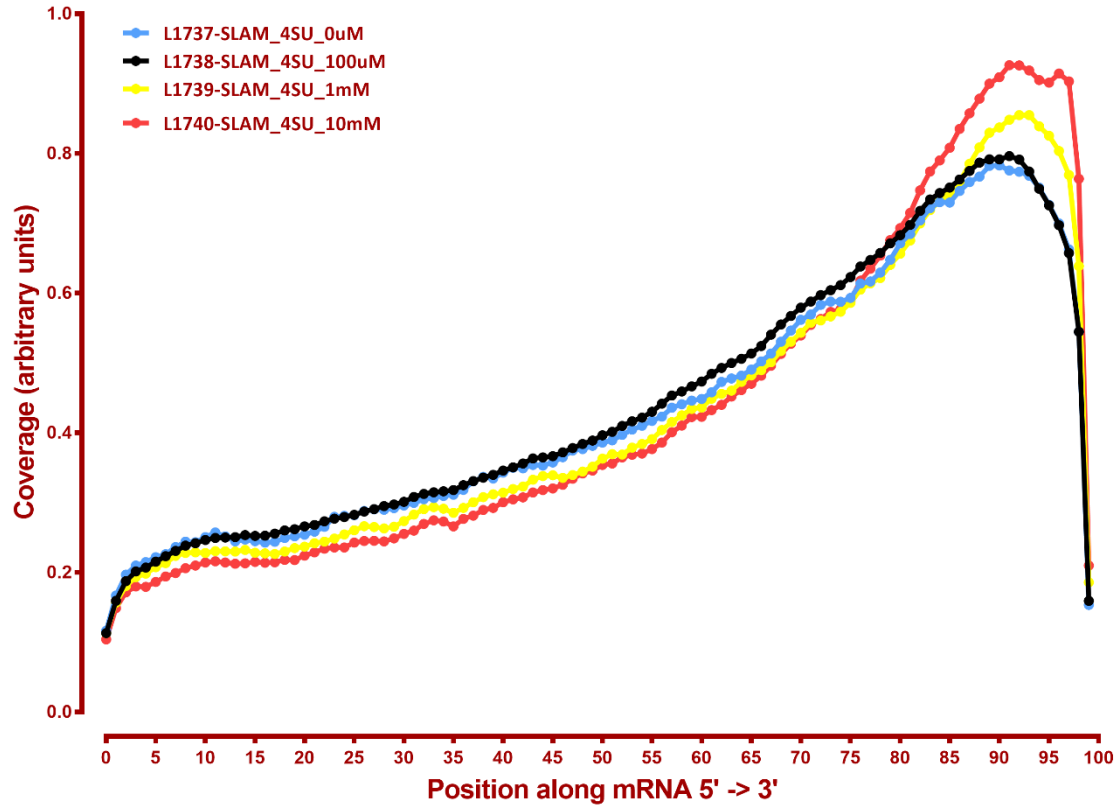
5'-3' coverage

Coverage of genes; >1000bp, hg38



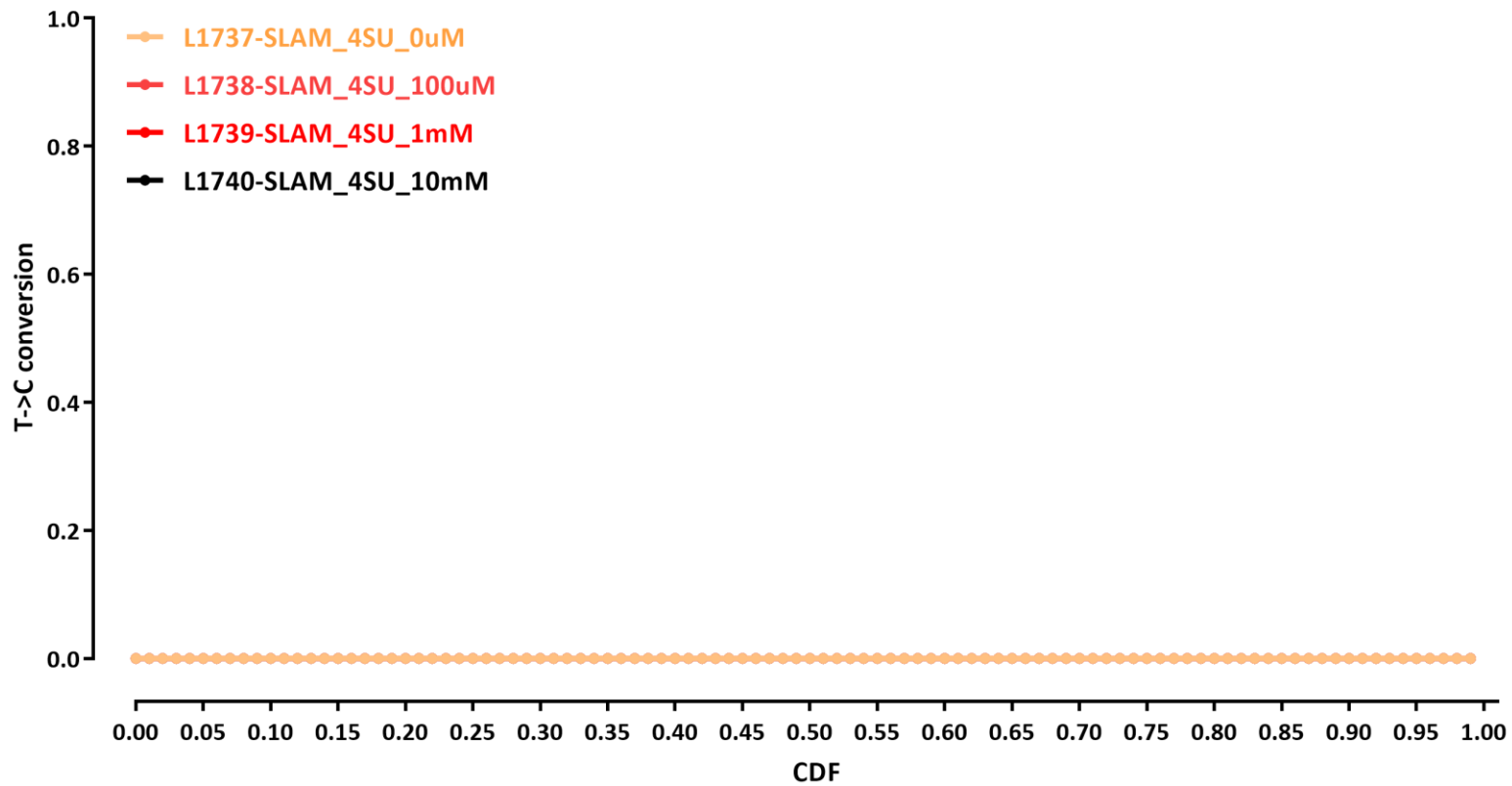
5'-3' coverage

Coverage of genes; >1000bp, hg38



Slamdunk conversion rates

cdf 1



cdf 2

