

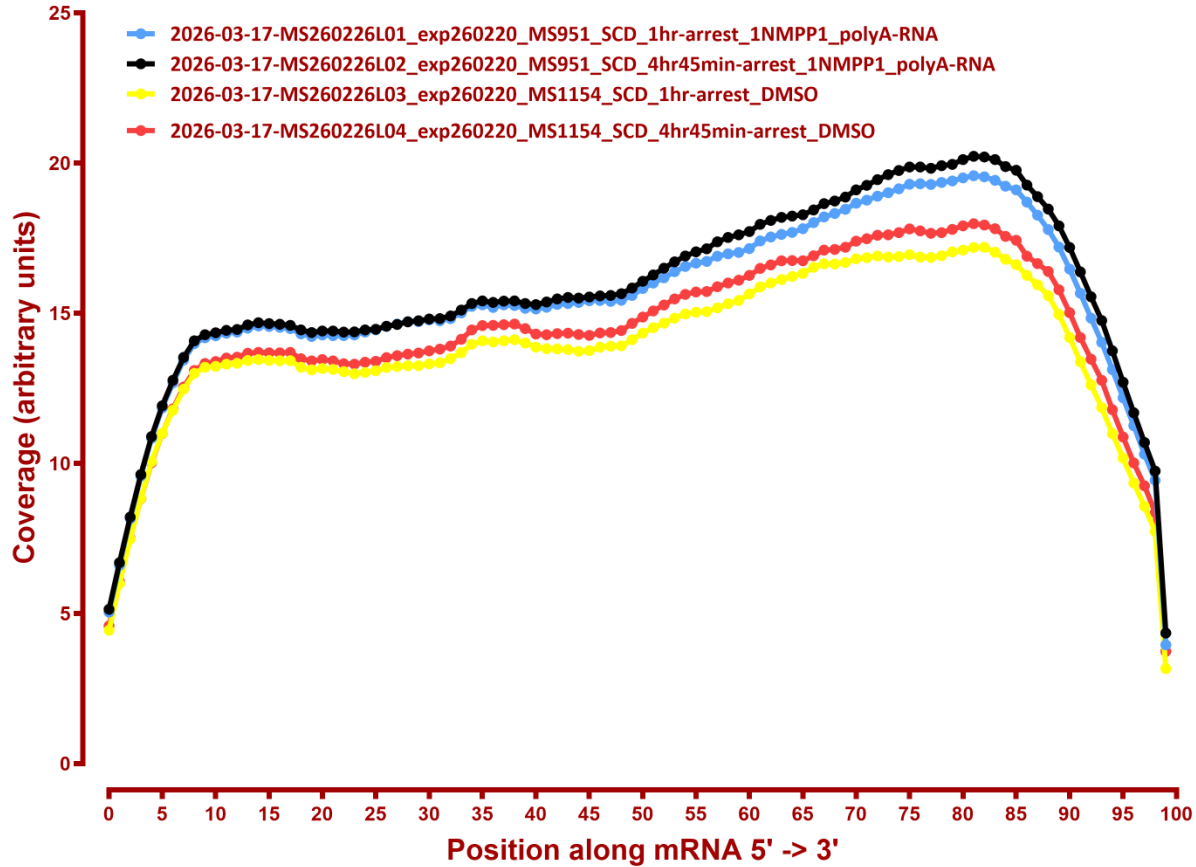
MAPPING STATS

Library	Read Length	Mapping	Species	Raw fragments	Complexity	Unique	Unique Splices	Multi	Multi Splices	Fraction mapped
2026-03-17-MS260226L01_exp260220_MS951_SCD_1hr-arrest_1NMPP1_polyA-RNA	2x150	STAR-2.5.3a	Candida	6,827,385	0.63	4,235,740	111,902	39,671	6,955	0.32
2026-03-17-MS260226L01_exp260220_MS951_SCD_1hr-arrest_1NMPP1_polyA-RNA	2x150	STAR-2.5.3a	sacCer3	6,827,385	0.65	6,160,076	63,282	264,093	13,097	0.48
2026-03-17-MS260226L02_exp260220_MS951_SCD_4hr45min-arrest_1NMPP1_polyA-RNA	2x150	STAR-2.5.3a	Candida	9,109,054	0.61	4,959,702	132,474	46,063	7,371	0.28
2026-03-17-MS260226L02_exp260220_MS951_SCD_4hr45min-arrest_1NMPP1_polyA-RNA	2x150	STAR-2.5.3a	sacCer3	9,109,054	0.60	8,924,901	82,221	641,969	30,623	0.53
2026-03-17-MS260226L03_exp260220_MS1154_SCD_1hr-arrest_DMSO	2x150	STAR-2.5.3a	Candida	9,056,797	0.61	5,142,945	135,263	48,527	9,455	0.29
2026-03-17-MS260226L03_exp260220_MS1154_SCD_1hr-arrest_DMSO	2x150	STAR-2.5.3a	sacCer3	9,056,797	0.60	8,468,312	252,744	483,110	17,578	0.51
2026-03-17-MS260226L04_exp260220_MS1154_SCD_4hr45min-arrest_DMSO	2x150	STAR-2.5.3a	Candida	8,506,776	0.62	4,969,268	132,110	46,858	9,626	0.30
2026-03-17-MS260226L04_exp260220_MS1154_SCD_4hr45min-arrest_DMSO	2x150	STAR-2.5.3a	sacCer3	8,506,776	0.62	7,616,090	181,538	725,765	27,321	0.50
2026-03-17-MS260226L05_exp260220_MS1154_SCD_1hr-arrest_1NMPP1_polyA-RNA	2x150	STAR-2.5.3a	Candida	8,534,244	0.61	5,330,900	142,500	49,499	10,431	0.32
2026-03-17-MS260226L05_exp260220_MS1154_SCD_1hr-arrest_1NMPP1_polyA-RNA	2x150	STAR-2.5.3a	sacCer3	8,534,244	0.62	7,790,909	74,201	331,717	22,911	0.48
2026-03-17-MS260226L06_exp260220_MS1154_SCD_4hr45min-arrest_1NMPP1_polyA-RNA	2x150	STAR-2.5.3a	Candida	9,243,241	0.61	5,328,324	143,612	51,771	8,925	0.30
2026-03-17-MS260226L06_exp260220_MS1154_SCD_4hr45min-arrest_1NMPP1_polyA-RNA	2x150	STAR-2.5.3a	sacCer3	9,243,241	0.61	8,288,971	72,103	665,148	37,534	0.49
2026-03-17-MS260226L07_exp260220_MS1042_SCD_1hr-arrest_ATC_polyA-RNA	2x150	STAR-2.5.3a	Candida	4,964,290	0.63	7,537	41	2,334	0	0.00
2026-03-17-MS260226L07_exp260220_MS1042_SCD_1hr-arrest_ATC_polyA-RNA	2x150	STAR-2.5.3a	sacCer3	4,964,290	0.60	7,081,336	236,918	429,901	13,451	0.78
2026-03-17-MS260226L08_exp260220_MS1042_SCD_4hr45min-arrest_ATC_polyA-RNA	2x150	STAR-2.5.3a	Candida	4,459,035	0.69	8,251	89	3,858	0	0.00
2026-03-17-MS260226L08_exp260220_MS1042_SCD_4hr45min-arrest_ATC_polyA-RNA	2x150	STAR-2.5.3a	sacCer3	4,459,035	0.63	6,108,392	180,546	548,995	24,147	0.77
2026-03-17-MS260226L09_exp241211_MS796_SCD_1hr-arrest_polyA-RNA	2x150	STAR-2.5.3a	Candida	5,116,845	0.66	7,900	64	2,946	0	0.00
2026-03-17-MS260226L09_exp241211_MS796_SCD_1hr-arrest_polyA-RNA	2x150	STAR-2.5.3a	sacCer3	5,116,845	0.61	7,363,196	235,454	422,775	14,413	0.79
2026-03-17-MS260226L10_exp241211_MS796_SCD_4hr45min-arrest_polyA-RNA	2x150	STAR-2.5.3a	Candida	4,815,940	0.71	8,729	81	14,172	0	0.00
2026-03-17-MS260226L10_exp241211_MS796_SCD_4hr45min-arrest_polyA-RNA	2x150	STAR-2.5.3a	sacCer3	4,815,940	0.62	6,832,153	191,211	514,384	18,840	0.78

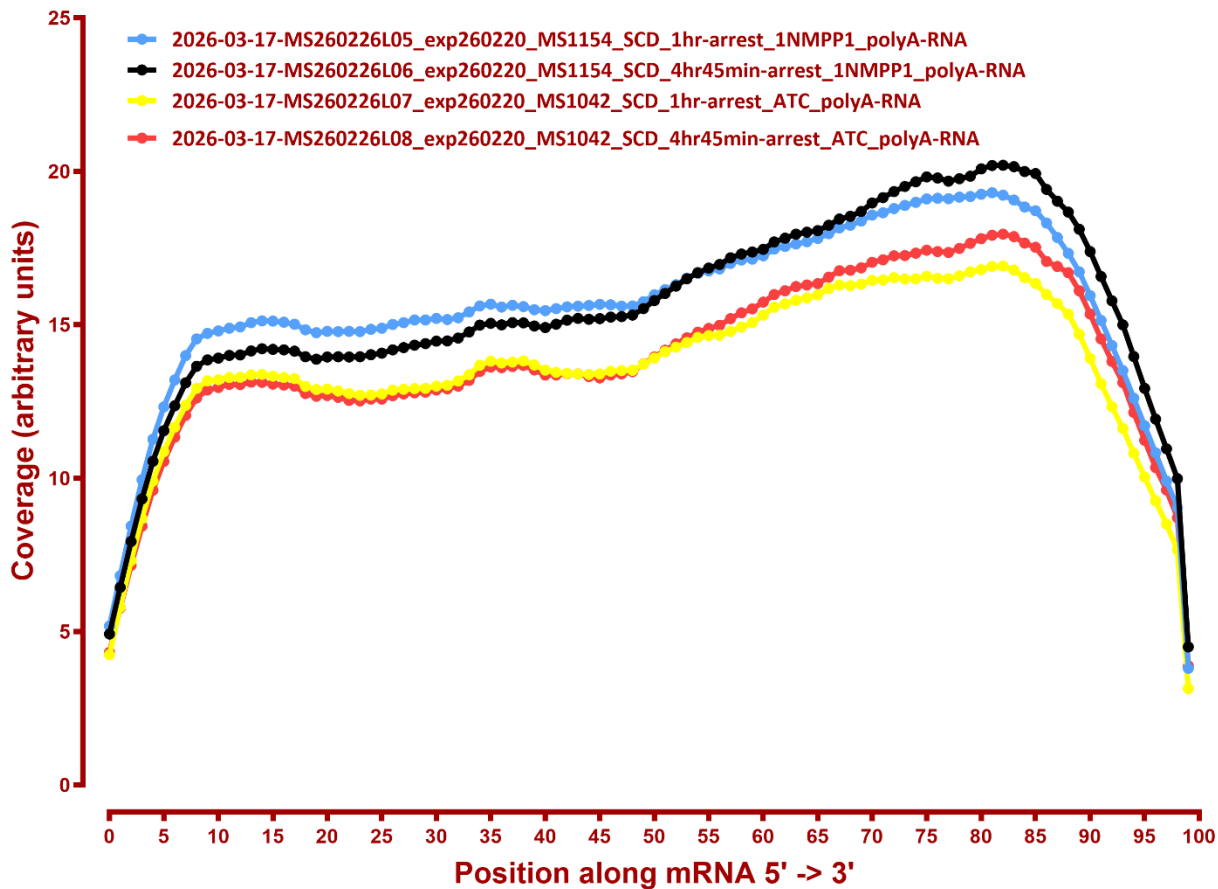
#	Exonic:	Intergenic:	Intronic:
2026-03-17-MS260226L01_exp260220_MS951_SCD_1hr-arrest_1NMPP1_polyA-RNA	0.92	0.08	0.00
2026-03-17-MS260226L02_exp260220_MS951_SCD_4hr45min-arrest_1NMPP1_polyA-RNA	0.92	0.08	0.00
2026-03-17-MS260226L03_exp260220_MS1154_SCD_1hr-arrest_DMSO	0.93	0.07	0.00
2026-03-17-MS260226L04_exp260220_MS1154_SCD_4hr45min-arrest_DMSO	0.93	0.07	0.00
2026-03-17-MS260226L05_exp260220_MS1154_SCD_1hr-arrest_1NMPP1_polyA-RNA	0.92	0.08	0.00
2026-03-17-MS260226L06_exp260220_MS1154_SCD_4hr45min-arrest_1NMPP1_polyA-RNA	0.92	0.08	0.00
2026-03-17-MS260226L07_exp260220_MS1042_SCD_1hr-arrest_ATC_polyA-RNA	0.93	0.07	0.00
2026-03-17-MS260226L08_exp260220_MS1042_SCD_4hr45min-arrest_ATC_polyA-RNA	0.92	0.07	0.00
2026-03-17-MS260226L09_exp241211_MS796_SCD_1hr-arrest_polyA-RNA	0.92	0.07	0.00
2026-03-17-MS260226L10_exp241211_MS796_SCD_4hr45min-arrest_polyA-RNA	0.93	0.07	0.00

COVERAGE

Coverage of genes; >1000bp, sacCer3



Coverage of genes; >1000bp, sacCer3



Coverage of genes; >1000bp, sacCer3

