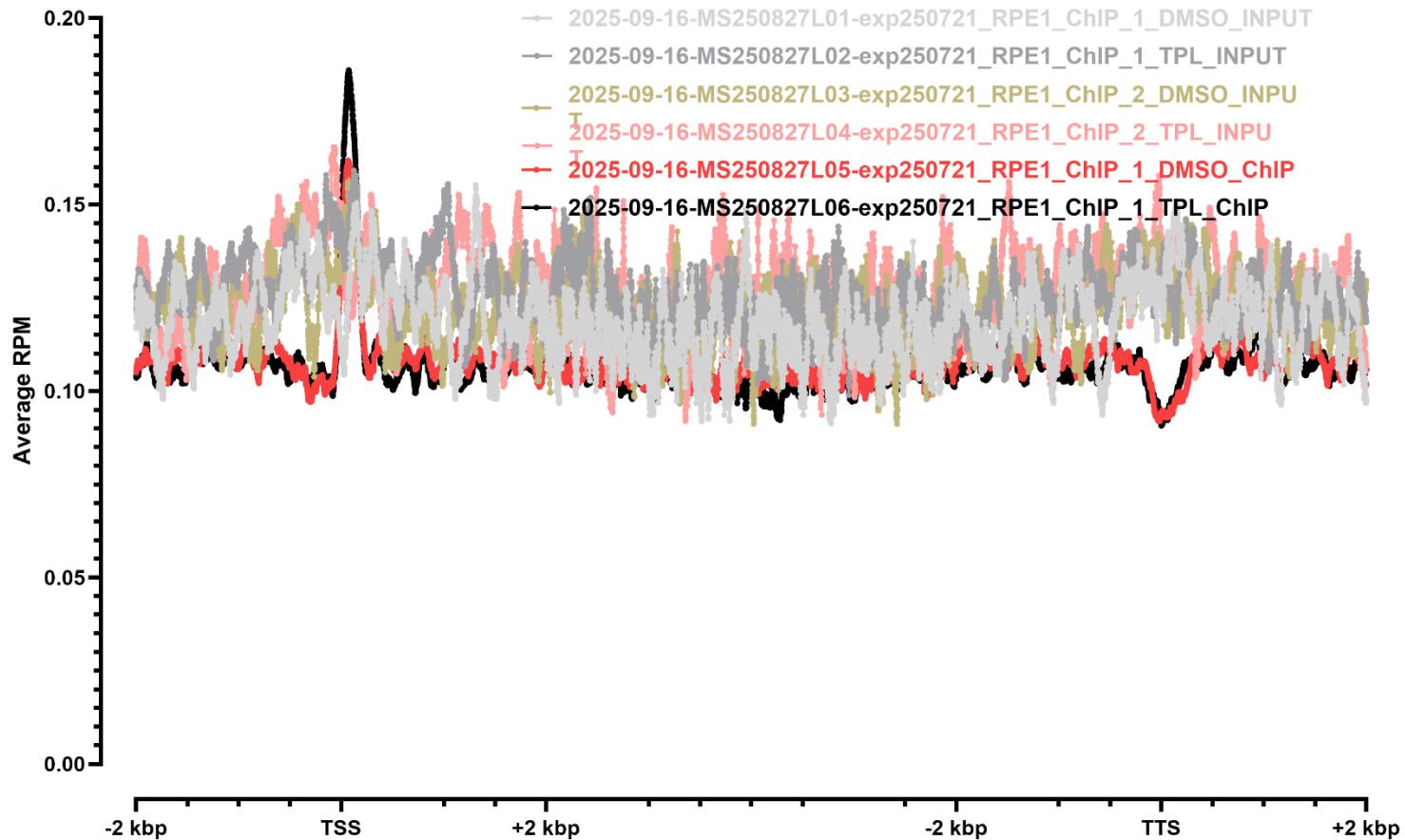


MAPPING STATS

Library	Raw fragments	Species	2x75mers unique		
			Unique reads	Complexity	Fraction aligned
2025-09-16-MS250827L01-exp250721_RPE1_ChIP_1_DMSO_INPUT	1,047,253	dm6	123,438	0.87	0.06
2025-09-16-MS250827L01-exp250721_RPE1_ChIP_1_DMSO_INPUT	1,047,253	hg38	1,613,724	0.86	0.77
2025-09-16-MS250827L02-exp250721_RPE1_ChIP_1_TPL_INPUT	1,410,735	dm6	172,686	0.86	0.06
2025-09-16-MS250827L02-exp250721_RPE1_ChIP_1_TPL_INPUT	1,410,735	hg38	2,135,926	0.85	0.76
2025-09-16-MS250827L03-exp250721_RPE1_ChIP_2_DMSO_INPUT	959,826	dm6	114,120	0.88	0.06
2025-09-16-MS250827L03-exp250721_RPE1_ChIP_2_DMSO_INPUT	959,826	hg38	1,451,718	0.87	0.76
2025-09-16-MS250827L04-exp250721_RPE1_ChIP_2_TPL_INPUT	990,544	dm6	122,566	0.86	0.06
2025-09-16-MS250827L04-exp250721_RPE1_ChIP_2_TPL_INPUT	990,544	hg38	1,502,266	0.86	0.76
2025-09-16-MS250827L05-exp250721_RPE1_ChIP_1_DMSO_ChIP	12,343,437	dm6	1,242,474	0.85	0.05
2025-09-16-MS250827L05-exp250721_RPE1_ChIP_1_DMSO_ChIP	12,343,437	hg38	18,648,034	0.85	0.76
2025-09-16-MS250827L06-exp250721_RPE1_ChIP_1_TPL_ChIP	11,693,537	dm6	1,179,448	0.85	0.05
2025-09-16-MS250827L06-exp250721_RPE1_ChIP_1_TPL_ChIP	11,693,537	hg38	17,890,448	0.84	0.76
2025-09-16-MS250827L07-exp250721_RPE1_ChIP_2_DMSO_ChIP	11,455,145	dm6	1,067,096	0.82	0.05
2025-09-16-MS250827L07-exp250721_RPE1_ChIP_2_DMSO_ChIP	11,455,145	hg38	16,415,338	0.82	0.72
2025-09-16-MS250827L08-exp250721_RPE1_ChIP_2_TPL_ChIP	9,321,961	dm6	965,870	0.83	0.05
2025-09-16-MS250827L08-exp250721_RPE1_ChIP_2_TPL_ChIP	9,321,961	hg38	13,019,952	0.82	0.70
2025-09-16-MS250827L09-exp250721_RPE1_ChIP_1_DMSO_Beads	6,536,869	dm6	521,478	0.85	0.04
2025-09-16-MS250827L09-exp250721_RPE1_ChIP_1_DMSO_Beads	6,536,869	hg38	9,812,854	0.84	0.75
2025-09-16-MS250827L10-exp250721_RPE1_ChIP_1_TPL_Beads	10,520,282	dm6	821,288	0.84	0.04
2025-09-16-MS250827L10-exp250721_RPE1_ChIP_1_TPL_Beads	10,520,282	hg38	15,379,300	0.83	0.73
2025-09-16-MS250827L11-exp250721_RPE1_ChIP_2_DMSO_Beads	8,560,037	dm6	524,686	0.77	0.03
2025-09-16-MS250827L11-exp250721_RPE1_ChIP_2_DMSO_Beads	8,560,037	hg38	12,459,004	0.76	0.73
2025-09-16-MS250827L12-exp250721_RPE1_ChIP_2_TPL_Beads	6,226,418	dm6	389,494	0.76	0.03
2025-09-16-MS250827L12-exp250721_RPE1_ChIP_2_TPL_Beads	6,226,418	hg38	8,605,370	0.75	0.69
2025-09-16-MS250902L13-exp250728_RPE1_ChIP_Palbo-18h_INPUT	1,342,228	dm6	81,224	0.89	0.03
2025-09-16-MS250902L13-exp250728_RPE1_ChIP_Palbo-18h_INPUT	1,342,228	hg38	2,142,958	0.88	0.80
2025-09-16-MS250902L14-exp250728_RPE1_ChIP_Palbo-48h_INPUT	1,302,936	dm6	87,416	0.89	0.03
2025-09-16-MS250902L14-exp250728_RPE1_ChIP_Palbo-48h_INPUT	1,302,936	hg38	2,048,034	0.88	0.79
2025-09-16-MS250902L15-exp250728_RPE1_ChIP_Palbo-96h_INPUT	1,258,125	dm6	74,280	0.89	0.03
2025-09-16-MS250902L15-exp250728_RPE1_ChIP_Palbo-96h_INPUT	1,258,125	hg38	1,992,570	0.88	0.79
2025-09-16-MS250902L16-exp250728_RPE1_ChIP_Palbo-18h_ChIP	16,447,745	dm6	748,402	0.87	0.02
2025-09-16-MS250902L16-exp250728_RPE1_ChIP_Palbo-18h_ChIP	16,447,745	hg38	26,054,178	0.86	0.79
2025-09-16-MS250902L17-exp250728_RPE1_ChIP_Palbo-48h_ChIP	14,669,547	dm6	707,244	0.83	0.02
2025-09-16-MS250902L17-exp250728_RPE1_ChIP_Palbo-48h_ChIP	14,669,547	hg38	23,039,642	0.81	0.79
2025-09-16-MS250902L18-exp250728_RPE1_ChIP_Palbo-96h_ChIP	13,750,328	dm6	725,750	0.85	0.03
2025-09-16-MS250902L18-exp250728_RPE1_ChIP_Palbo-96h_ChIP	13,750,328	hg38	20,959,062	0.84	0.76

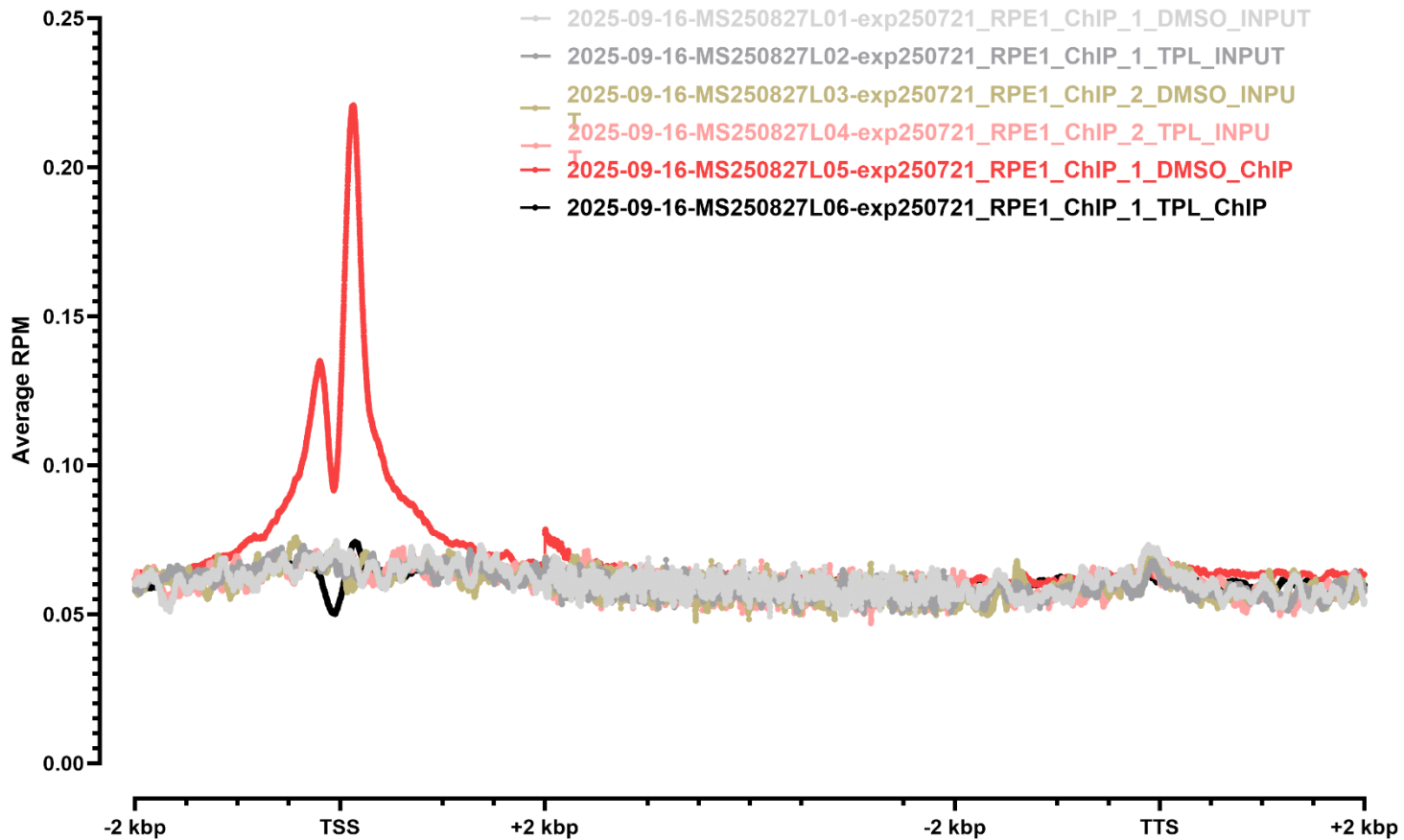
METAGENE PROFILES

dm6 1



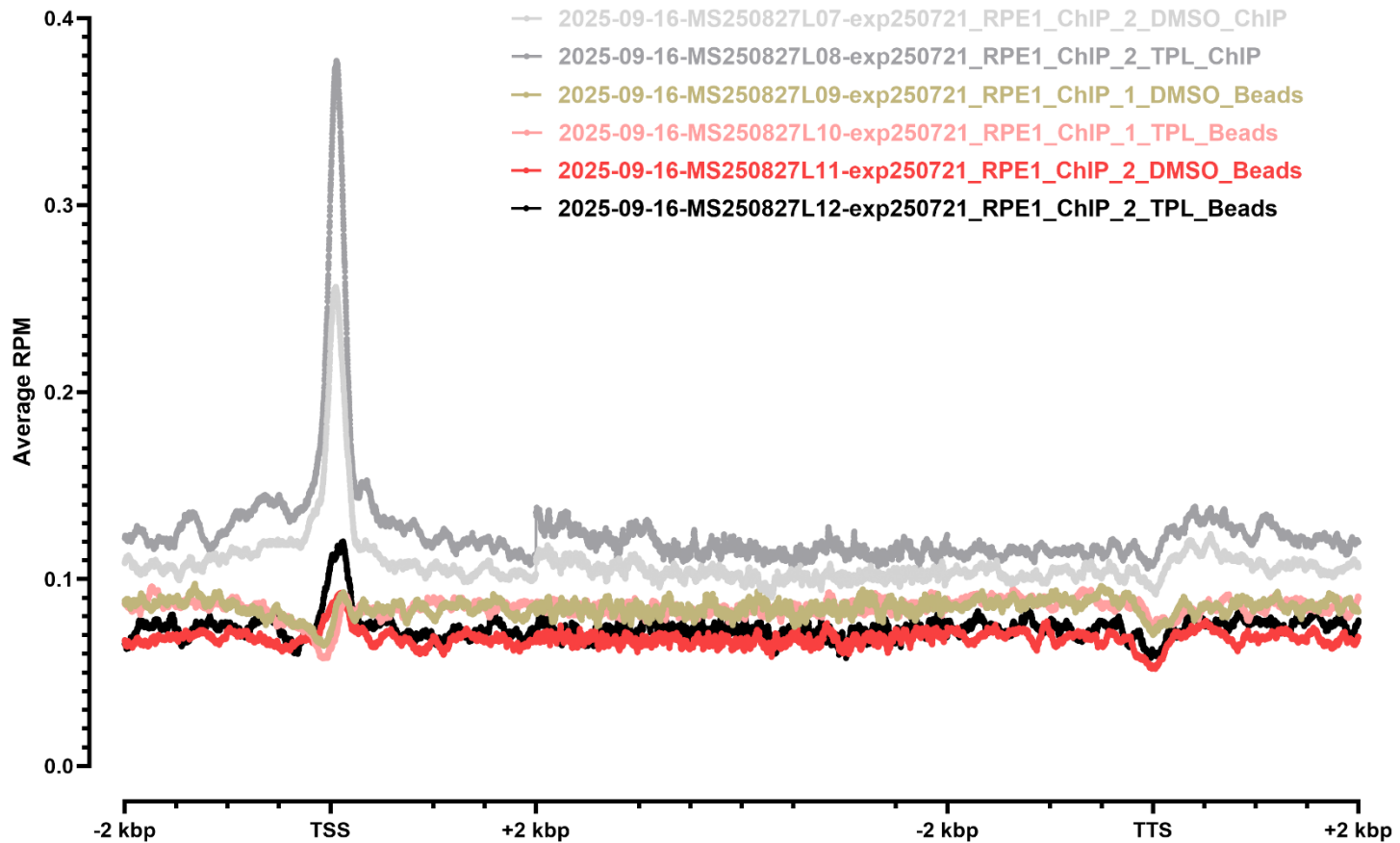
METAGENE PROFILES

hg38 1



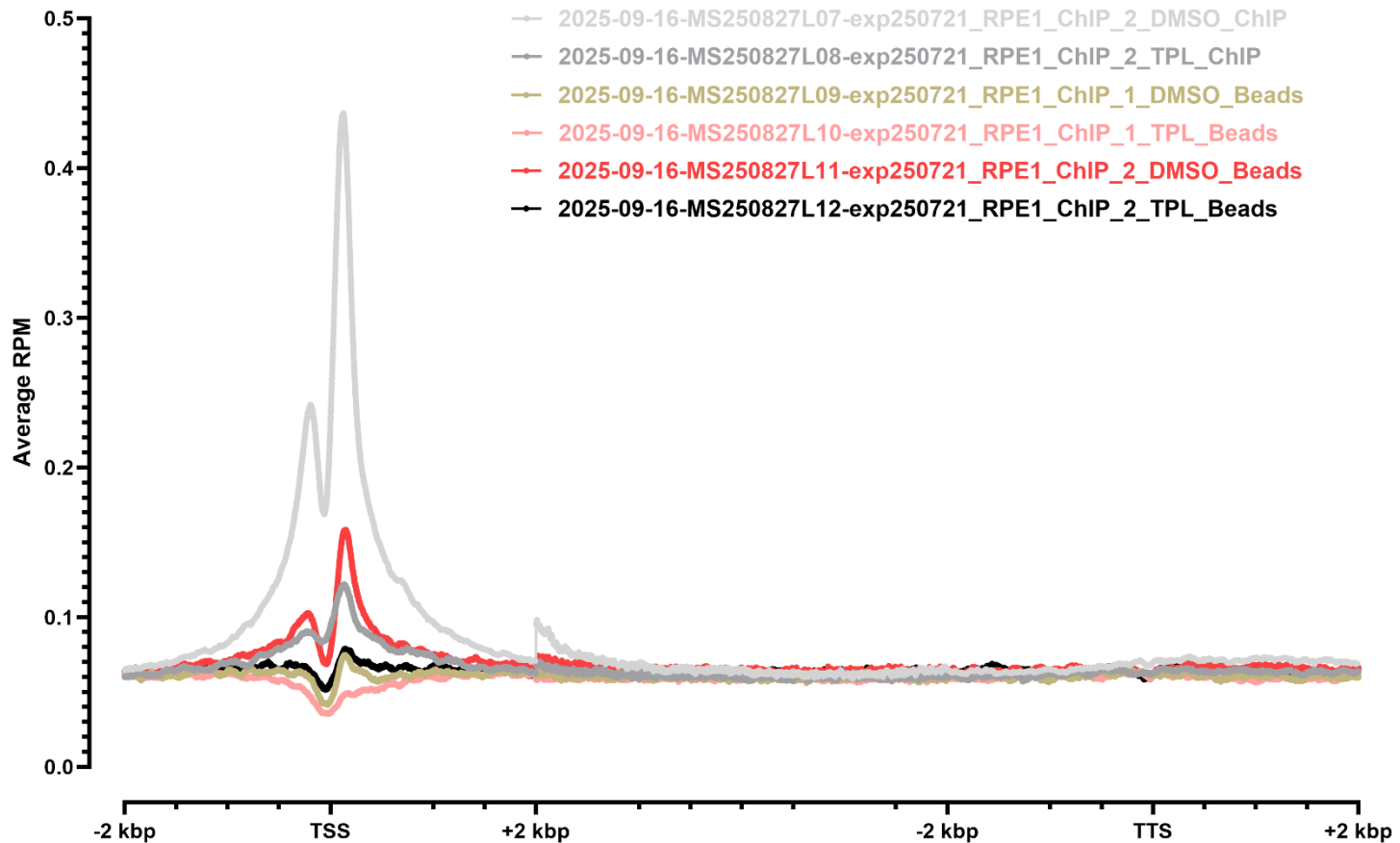
METAGENE PROFILES

dm6 2



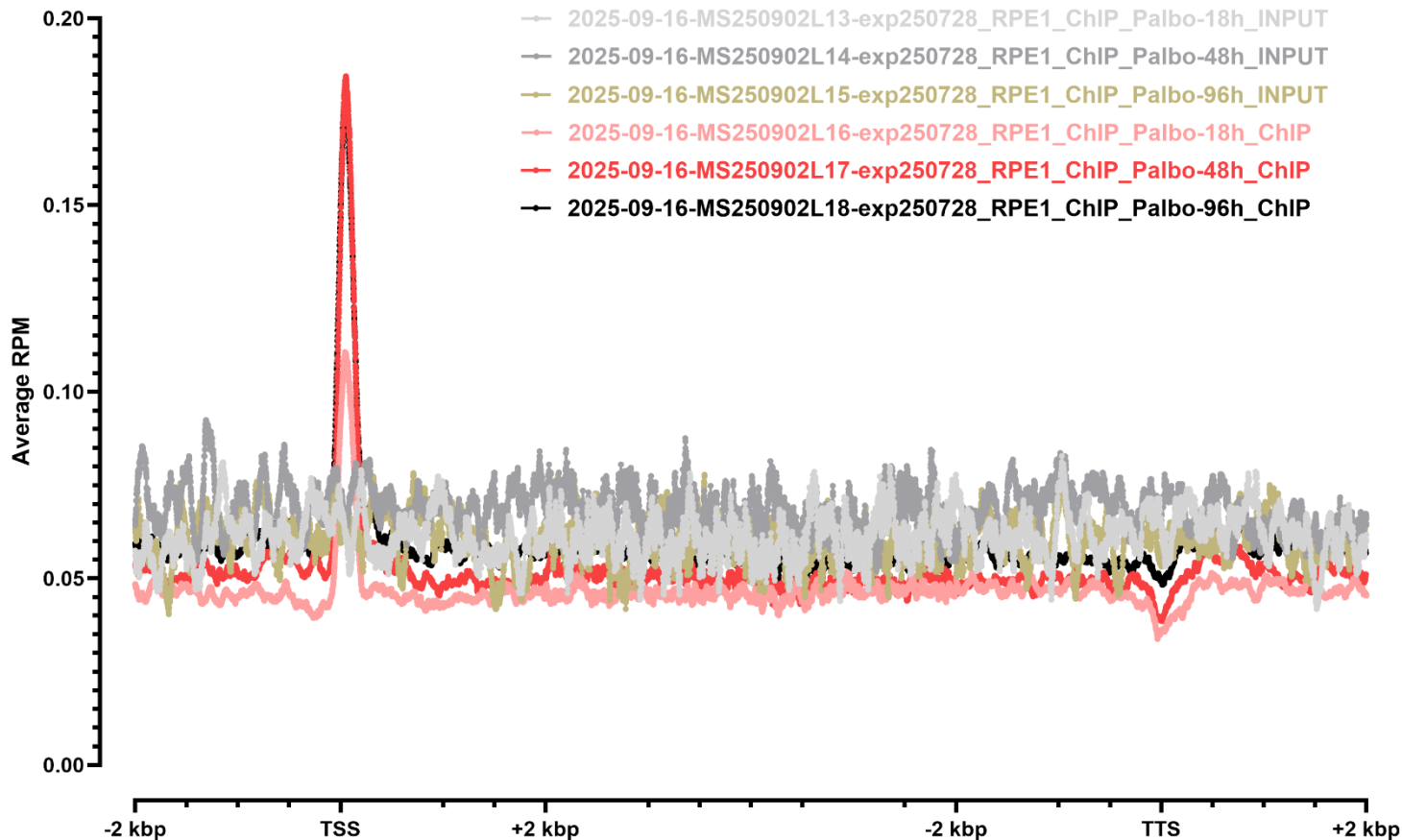
METAGENE PROFILES

hg38 2



METAGENE PROFILES

dm6 3



METAGENE PROFILES

hg38 3

