

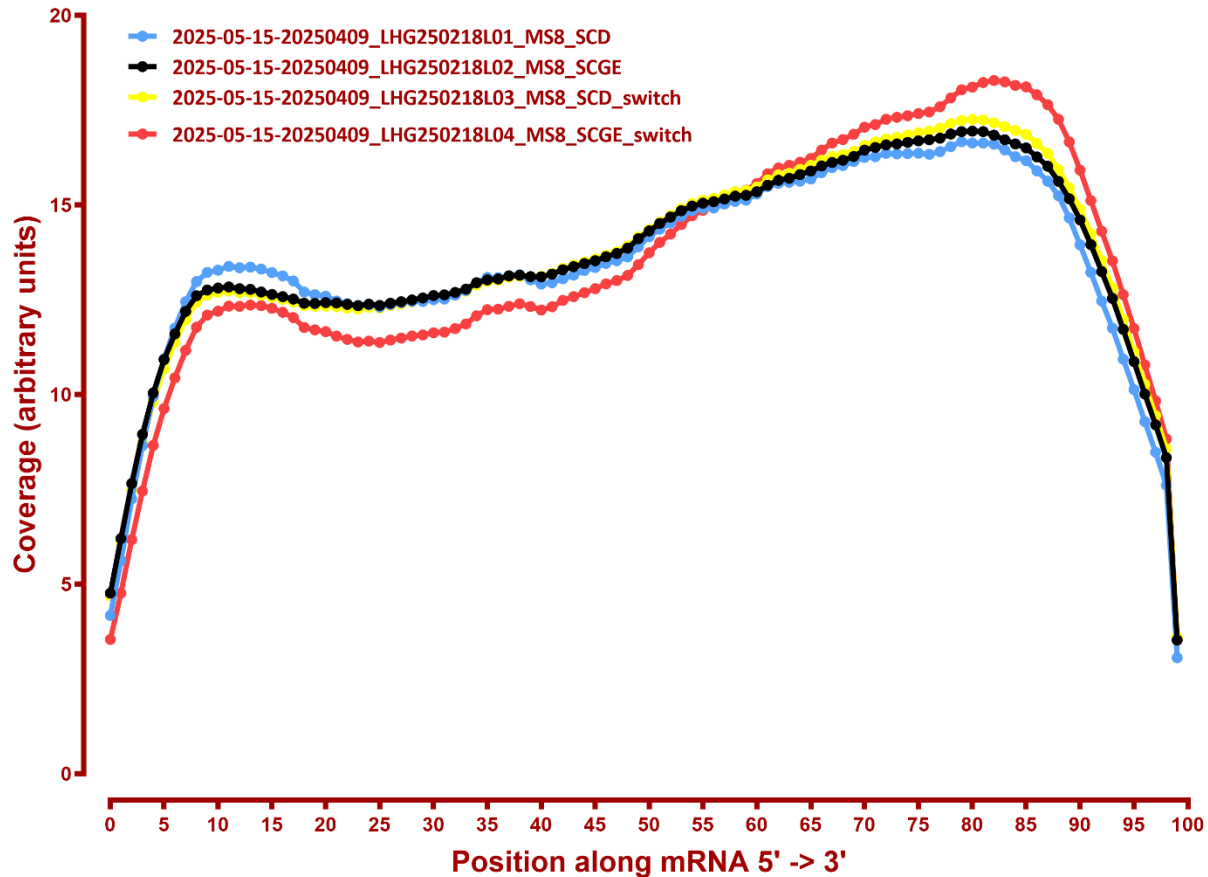
# MAPPING STATS

Library	Read Length	Mapping	Species	Raw fragments	Complexity	Unique	Unique Splices	Multi	Multi Splices	Fraction mapped
2025-05-15-20250409_LHG250218L01_MS8_SCD	2x150	STAR-2.5.3a	Candida	34,950,818	0.52	7,128,785	212,677	112,413	11,695	0.11
2025-05-15-20250409_LHG250218L01_MS8_SCD	2x150	STAR-2.5.3a	sacCer3	34,950,818	0.41	37,786,956	1,343,944	2,602,813	131,853	0.60
2025-05-15-20250409_LHG250218L02_MS8_SCGE	2x150	STAR-2.5.3a	Candida	36,483,784	0.45	16,572,163	491,213	221,296	45,054	0.24
2025-05-15-20250409_LHG250218L02_MS8_SCGE	2x150	STAR-2.5.3a	sacCer3	36,483,784	0.46	30,415,184	776,242	1,915,280	72,870	0.45
2025-05-15-20250409_LHG250218L03_MS8_SCD_switch	2x150	STAR-2.5.3a	Candida	37,327,414	0.47	13,635,847	395,629	171,695	29,907	0.19
2025-05-15-20250409_LHG250218L03_MS8_SCD_switch	2x150	STAR-2.5.3a	sacCer3	37,327,414	0.44	35,778,970	877,386	2,125,928	100,368	0.52
2025-05-15-20250409_LHG250218L04_MS8_SCGE_switch	2x150	STAR-2.5.3a	Candida	37,126,326	0.42	18,442,728	575,252	249,281	42,619	0.26
2025-05-15-20250409_LHG250218L04_MS8_SCGE_switch	2x150	STAR-2.5.3a	sacCer3	37,126,326	0.40	31,847,593	1,087,425	2,152,280	116,322	0.47
2025-05-15-20250409_LHG2503118L04_MS8_SCGE_switch	2x150	STAR-2.5.3a	Candida	36,772,140	0.50	8,900,859	260,757	144,261	15,449	0.13
2025-05-15-20250409_LHG2503118L04_MS8_SCGE_switch	2x150	STAR-2.5.3a	sacCer3	36,772,140	0.43	41,168,515	1,086,131	2,675,096	144,958	0.61
2025-05-15-20250409_LHG250311L01_MS8_SCD	2x150	STAR-2.5.3a	Candida	35,348,315	0.50	8,147,183	246,867	111,340	14,060	0.12
2025-05-15-20250409_LHG250311L01_MS8_SCD	2x150	STAR-2.5.3a	sacCer3	35,348,315	0.40	40,282,094	1,399,916	3,017,705	163,855	0.63
2025-05-15-20250409_LHG250311L02_MS8_SCGE	2x150	STAR-2.5.3a	Candida	188	NA	0	0	0	0	0.00
2025-05-15-20250409_LHG250311L02_MS8_SCGE	2x150	STAR-2.5.3a	sacCer3	188	1.00	12	0	4	0	0.04
2025-05-15-20250409_LHG250311L03_MS8_SCD_switch	2x150	STAR-2.5.3a	Candida	68,272,051	0.38	41,381,655	1,191,311	550,394	165,836	0.32
2025-05-15-20250409_LHG250311L03_MS8_SCD_switch	2x150	STAR-2.5.3a	sacCer3	68,272,051	0.38	54,144,094	1,774,836	4,374,456	265,960	0.44

#	Exonic:	Intergenic:	Intronic:
2025-05-15-20250409_LHG250218L01_MS8_SCD	0.93	0.07	0.00
2025-05-15-20250409_LHG250218L02_MS8_SCGE	0.92	0.08	0.00
2025-05-15-20250409_LHG250218L03_MS8_SCD_switch	0.92	0.08	0.00
2025-05-15-20250409_LHG250218L04_MS8_SCGE_switch	0.93	0.07	0.00
2025-05-15-20250409_LHG2503118L04_MS8_SCGE_switch	0.92	0.08	0.00
2025-05-15-20250409_LHG250311L01_MS8_SCD	0.93	0.07	0.00
2025-05-15-20250409_LHG250311L02_MS8_SCGE	0.92	0.08	0.00
2025-05-15-20250409_LHG250311L03_MS8_SCD_switch	0.93	0.06	0.00

# COVERAGE

## Coverage of genes; >1000bp, sacCer3



## Coverage of genes; >1000bp, sacCer3

