

MAPPING STATS

Library	Read Length	Mapping	Species	Raw fragments	Complexity	Unique	Unique Splices	Multi	Multi Splices	Fraction mapped
2024-11-28-MS240930L01_exp240919_MS8_SCD	2x150	STAR-2.5.3a	Candida	4,085,682	0.67	2,935,420	41,616	144,128	3,648	0.38
2024-11-28-MS240930L01_exp240919_MS8_SCD	2x150	STAR-2.5.3a	sacCer3	4,085,682	0.65	3,718,053	105,629	814,491	7,881	0.57
2024-11-28-MS240930L02_exp240919_MS8_SCD-RAPA	2x150	STAR-2.5.3a	Candida	4,122,101	0.68	4,060,203	59,991	58,115	4,285	0.51
2024-11-28-MS240930L02_exp240919_MS8_SCD-RAPA	2x150	STAR-2.5.3a	sacCer3	4,122,101	0.69	3,148,326	64,596	321,717	5,819	0.43
2024-11-28-MS240930L03_exp240919_MS8_SCGE	2x150	STAR-2.5.3a	Candida	4,100,709	0.69	3,503,996	50,148	43,317	3,519	0.44
2024-11-28-MS240930L03_exp240919_MS8_SCGE	2x150	STAR-2.5.3a	sacCer3	4,100,709	0.69	3,611,417	74,163	242,583	4,341	0.48
2024-11-28-MS241015L01_exp240822_MS902_SCD_1hr-RAPA_1hr-PhIAA_RNA	2x150	STAR-2.5.3a	Candida	4,686,970	0.73	2,270,563	31,951	31,485	2,329	0.25
2024-11-28-MS241015L01_exp240822_MS902_SCD_1hr-RAPA_1hr-PhIAA_RNA	2x150	STAR-2.5.3a	sacCer3	4,686,970	0.69	5,350,813	107,101	286,857	8,287	0.61
2024-11-28-MS241015L02_exp240822_MS902_SCD_1hr-RAPA_1hr-DMSO_RNA	2x150	STAR-2.5.3a	Candida	4,469,225	0.70	3,626,318	49,896	48,367	4,129	0.42
2024-11-28-MS241015L02_exp240822_MS902_SCD_1hr-RAPA_1hr-DMSO_RNA	2x150	STAR-2.5.3a	sacCer3	4,469,225	0.68	3,725,052	92,052	224,447	4,755	0.45
2024-11-28-MS241015L03_exp240822_MS903_SCD_1hr-RAPA_1hr-PhIAA_RNA	2x150	STAR-2.5.3a	Candida	5,107,052	0.69	3,281,490	48,410	46,517	3,575	0.33
2024-11-28-MS241015L03_exp240822_MS903_SCD_1hr-RAPA_1hr-PhIAA_RNA	2x150	STAR-2.5.3a	sacCer3	5,107,052	0.68	4,950,175	115,851	273,657	6,473	0.52
2024-11-28-MS241015L04_exp240822_MS903_SCD_1hr-RAPA_1hr-DMSO_RNA	2x150	STAR-2.5.3a	Candida	4,658,606	0.69	3,183,481	53,361	43,820	4,046	0.35
2024-11-28-MS241015L04_exp240822_MS903_SCD_1hr-RAPA_1hr-DMSO_RNA	2x150	STAR-2.5.3a	sacCer3	4,658,606	0.64	4,476,116	143,766	254,331	7,615	0.52
2024-11-28-MS241015L05_exp240822_MS904_SCD_1hr-RAPA_1hr-PhIAA_RNA	2x150	STAR-2.5.3a	Candida	4,875,016	0.70	3,334,600	50,658	45,681	3,055	0.35
2024-11-28-MS241015L05_exp240822_MS904_SCD_1hr-RAPA_1hr-PhIAA_RNA	2x150	STAR-2.5.3a	sacCer3	4,875,016	0.68	4,651,072	121,966	260,893	9,193	0.52
2024-11-28-MS241015L06_exp240822_MS904_SCD_1hr-RAPA_1hr-DMSO_RNA	2x150	STAR-2.5.3a	Candida	5,086,291	0.70	2,653,121	39,395	38,882	3,168	0.27
2024-11-28-MS241015L06_exp240822_MS904_SCD_1hr-RAPA_1hr-DMSO_RNA	2x150	STAR-2.5.3a	sacCer3	5,086,291	0.62	5,663,581	148,395	314,936	10,410	0.60
2024-11-28-MS241015L07_exp240822_MS905_SCD_1hr-RAPA_1hr-PhIAA_RNA	2x150	STAR-2.5.3a	Candida	4,374,831	0.70	3,631,979	55,047	52,249	4,323	0.43
2024-11-28-MS241015L07_exp240822_MS905_SCD_1hr-RAPA_1hr-PhIAA_RNA	2x150	STAR-2.5.3a	sacCer3	4,374,831	0.67	3,437,125	115,641	217,042	5,154	0.43
2024-11-28-MS241015L08_exp240822_MS905_SCD_1hr-RAPA_1hr-DMSO_RNA	2x150	STAR-2.5.3a	Candida	3,391,372	0.73	2,600,999	37,525	40,834	2,504	0.40
2024-11-28-MS241015L08_exp240822_MS905_SCD_1hr-RAPA_1hr-DMSO_RNA	2x150	STAR-2.5.3a	sacCer3	3,391,372	0.69	2,917,638	92,276	190,459	3,757	0.47
2024-11-28-MS241015L09_exp240828_MS69_SCGE_1.5hr-arrest_1hr-DMSO_RNA	2x150	STAR-2.5.3a	Candida	4,689,554	0.71	2,289,154	33,632	31,520	2,274	0.25
2024-11-28-MS241015L09_exp240828_MS69_SCGE_1.5hr-arrest_1hr-DMSO_RNA	2x150	STAR-2.5.3a	sacCer3	4,689,554	0.65	5,655,050	120,512	306,296	7,992	0.65
2024-11-28-MS241015L10_exp240828_MS69_SCGE_1.5hr-arrest_1hr-PhIAA_RNA	2x150	STAR-2.5.3a	Candida	4,684,805	0.69	2,410,726	35,654	33,307	2,365	0.26
2024-11-28-MS241015L10_exp240828_MS69_SCGE_1.5hr-arrest_1hr-PhIAA_RNA	2x150	STAR-2.5.3a	sacCer3	4,684,805	0.64	5,692,241	119,727	299,740	9,342	0.65
2024-11-28-MS241015L11_exp240828_MS69_SCGE_1.5hr-arrest_30min-PhIAA_RNA	2x150	STAR-2.5.3a	Candida	4,403,090	0.70	2,221,748	33,294	32,587	2,077	0.26
2024-11-28-MS241015L11_exp240828_MS69_SCGE_1.5hr-arrest_30min-PhIAA_RNA	2x150	STAR-2.5.3a	sacCer3	4,403,090	0.64	5,297,918	113,364	287,517	7,099	0.65
2024-11-28-MS241015L12_exp240828_MS69_SCGE_8hr-arrest_1hr-DMSO_RNA	2x150	STAR-2.5.3a	Candida	4,826,550	0.68	3,006,042	44,224	47,603	2,893	0.32
2024-11-28-MS241015L12_exp240828_MS69_SCGE_8hr-arrest_1hr-DMSO_RNA	2x150	STAR-2.5.3a	sacCer3	4,826,550	0.63	5,138,685	93,853	383,557	11,945	0.58
2024-11-28-MS241015L13_exp240828_MS69_SCGE_8hr-arrest_1hr-PhIAA_RNA	2x150	STAR-2.5.3a	Candida	4,879,043	0.68	2,962,237	39,847	45,533	3,253	0.31
2024-11-28-MS241015L13_exp240828_MS69_SCGE_8hr-arrest_1hr-PhIAA_RNA	2x150	STAR-2.5.3a	sacCer3	4,879,043	0.63	5,369,124	91,586	410,663	11,499	0.60

MAPPING STATS

2024-11-28-MS241015L14_exp240828_MS69_SCGE_8hr-arrest_30min-PhIAA_RNA	2x150	STAR-2.5.3a	Candida	5,285,409	0.68	3,220,785	42,263	54,146	4,138	0.31
2024-11-28-MS241015L14_exp240828_MS69_SCGE_8hr-arrest_30min-PhIAA_RNA	2x150	STAR-2.5.3a	sacCer3	5,285,409	0.63	5,692,526	96,338	434,997	11,583	0.59
2024-11-28-MS241015L15_exp240828_MS497_SCGE_1.5hr-arrest_1hr-DMSO_RNA	2x150	STAR-2.5.3a	Candida	4,418,361	0.70	2,255,747	30,643	30,371	1,979	0.26
2024-11-28-MS241015L15_exp240828_MS497_SCGE_1.5hr-arrest_1hr-DMSO_RNA	2x150	STAR-2.5.3a	sacCer3	4,418,361	0.65	5,348,510	108,086	269,654	6,324	0.65
2024-11-28-MS241015L16_exp240828_MS497_SCGE_1.5hr-arrest_1hr-PhIAA_RNA	2x150	STAR-2.5.3a	Candida	4,302,860	0.73	1,895,597	27,429	29,333	1,913	0.23
2024-11-28-MS241015L16_exp240828_MS497_SCGE_1.5hr-arrest_1hr-PhIAA_RNA	2x150	STAR-2.5.3a	sacCer3	4,302,860	0.69	5,389,068	89,720	260,195	6,369	0.67
2024-11-28-MS241015L17_exp240828_MS497_SCGE_1.5hr-arrest_30min-PhIAA_RNA	2x150	STAR-2.5.3a	Candida	4,870,417	0.71	2,095,129	30,827	31,523	2,043	0.22
2024-11-28-MS241015L17_exp240828_MS497_SCGE_1.5hr-arrest_30min-PhIAA_RNA	2x150	STAR-2.5.3a	sacCer3	4,870,417	0.66	6,227,534	97,790	310,641	6,661	0.68
2024-11-28-MS241015L18_exp240828_MS497_SCGE_8hr-arrest_1hr-DMSO_RNA	2x150	STAR-2.5.3a	Candida	4,940,162	0.70	2,652,240	39,934	39,061	2,577	0.28
2024-11-28-MS241015L18_exp240828_MS497_SCGE_8hr-arrest_1hr-DMSO_RNA	2x150	STAR-2.5.3a	sacCer3	4,940,162	0.64	5,679,098	100,682	423,867	12,431	0.63
2024-11-28-MS241015L19_exp240828_MS497_SCGE_8hr-arrest_1hr-PhIAA_RNA	2x150	STAR-2.5.3a	Candida	4,658,873	0.71	2,200,721	33,435	36,948	2,142	0.24
2024-11-28-MS241015L19_exp240828_MS497_SCGE_8hr-arrest_1hr-PhIAA_RNA	2x150	STAR-2.5.3a	sacCer3	4,658,873	0.68	5,550,403	72,421	418,414	11,184	0.65
2024-11-28-MS241015L20_exp240828_MS497_SCGE_8hr-arrest_30min-PhIAA_RNA	2x150	STAR-2.5.3a	Candida	4,560,879	0.72	2,089,438	31,504	29,587	1,813	0.24
2024-11-28-MS241015L20_exp240828_MS497_SCGE_8hr-arrest_30min-PhIAA_RNA	2x150	STAR-2.5.3a	sacCer3	4,560,879	0.67	5,549,436	84,274	419,882	11,322	0.66
2024-11-28-MS241015L21_exp240607_MS501_SCGE_1.5hr-arrest_1hr-DMSO_RNA	2x150	STAR-2.5.3a	Candida	5,039,924	0.69	2,510,269	35,785	36,671	2,433	0.26
2024-11-28-MS241015L21_exp240607_MS501_SCGE_1.5hr-arrest_1hr-DMSO_RNA	2x150	STAR-2.5.3a	sacCer3	5,039,924	0.63	6,059,677	129,699	347,264	8,364	0.65
2024-11-28-MS241015L22_exp240607_MS501_SCGE_1.5hr-arrest_1hr-PhIAA_RNA	2x150	STAR-2.5.3a	Candida	5,059,208	0.70	2,331,858	35,234	35,836	2,260	0.24
2024-11-28-MS241015L22_exp240607_MS501_SCGE_1.5hr-arrest_1hr-PhIAA_RNA	2x150	STAR-2.5.3a	sacCer3	5,059,208	0.67	6,156,952	118,242	342,859	7,249	0.65
2024-11-28-MS241015L23_exp240607_MS501_SCGE_1.5hr-arrest_30min-PhIAA_RNA	2x150	STAR-2.5.3a	Candida	4,548,425	0.71	1,928,082	28,680	27,595	1,993	0.22
2024-11-28-MS241015L23_exp240607_MS501_SCGE_1.5hr-arrest_30min-PhIAA_RNA	2x150	STAR-2.5.3a	sacCer3	4,548,425	0.66	5,843,590	108,494	318,740	9,950	0.69
2024-11-28-MS241015L24_exp240607_MS501_SCGE_8hr-arrest_1hr-DMSO_RNA	2x150	STAR-2.5.3a	Candida	4,661,742	0.67	2,973,865	44,293	44,981	3,179	0.33
2024-11-28-MS241015L24_exp240607_MS501_SCGE_8hr-arrest_1hr-DMSO_RNA	2x150	STAR-2.5.3a	sacCer3	4,661,742	0.63	4,949,564	83,770	399,894	12,910	0.58
2024-11-28-MS241015L25_exp240607_MS501_SCGE_8hr-arrest_1hr-PhIAA_RNA	2x150	STAR-2.5.3a	Candida	4,291,964	0.70	2,469,959	34,939	34,563	2,651	0.30
2024-11-28-MS241015L25_exp240607_MS501_SCGE_8hr-arrest_1hr-PhIAA_RNA	2x150	STAR-2.5.3a	sacCer3	4,291,964	0.67	4,875,316	57,248	396,113	11,505	0.62
2024-11-28-MS241015L26_exp240607_MS501_SCGE_8hr-arrest_30min-PhIAA_RNA	2x150	STAR-2.5.3a	Candida	4,490,553	0.69	2,473,574	34,156	33,616	2,552	0.28
2024-11-28-MS241015L26_exp240607_MS501_SCGE_8hr-arrest_30min-PhIAA_RNA	2x150	STAR-2.5.3a	sacCer3	4,490,553	0.66	5,203,246	73,476	419,519	13,641	0.64
2024-11-28-MS241108L01_exp241101_MS917_SCGEuri_1.5hr-arrest_no-EU_input	2x150	STAR-2.5.3a	S_pombe	2,187,246	0.75	860,558	65,502	28,218	2,006	0.22
2024-11-28-MS241108L01_exp241101_MS917_SCGEuri_1.5hr-arrest_no-EU_input	2x150	STAR-2.5.3a	sacCer3	2,187,246	0.74	2,515,882	46,952	157,074	2,946	0.62
2024-11-28-MS241108L02_exp241101_MS917_SCGEuri_1.5hr-arrest_04min-EU-chase_input	2x150	STAR-2.5.3a	S_pombe	2,353,850	0.74	1,019,158	77,374	46,105	2,249	0.24
2024-11-28-MS241108L02_exp241101_MS917_SCGEuri_1.5hr-arrest_04min-EU-chase_input	2x150	STAR-2.5.3a	sacCer3	2,353,850	0.73	2,743,765	50,337	187,881	2,505	0.63
2024-11-28-MS241108L03_exp241101_MS917_SCGEuri_1.5hr-arrest_07min-EU-chase_input	2x150	STAR-2.5.3a	S_pombe	2,118,384	0.75	893,834	69,536	29,565	1,799	0.23
2024-11-28-MS241108L03_exp241101_MS917_SCGEuri_1.5hr-arrest_07min-EU-chase_input	2x150	STAR-2.5.3a	sacCer3	2,118,384	0.74	2,442,792	47,914	152,279	2,601	0.62

MAPPING STATS

2024-11-28-MS241108L04_exp241101_MS917_SCGEur_i_1.5hr-arrest_10min-EU-chase_input	2x150	STAR-2.5.3a	S_pombe	1,857,185	0.77	799,377	61,417	26,315	1,679	0.24
2024-11-28-MS241108L04_exp241101_MS917_SCGEur_i_1.5hr-arrest_10min-EU-chase_input	2x150	STAR-2.5.3a	sacCer3	1,857,185	0.76	2,125,031	41,429	136,185	2,519	0.62
2024-11-28-MS241108L05_exp241101_MS917_SCGEur_i_1.5hr-arrest_13min-EU-chase_input	2x150	STAR-2.5.3a	S_pombe	1,933,528	0.76	826,008	64,972	27,828	1,744	0.24
2024-11-28-MS241108L05_exp241101_MS917_SCGEur_i_1.5hr-arrest_13min-EU-chase_input	2x150	STAR-2.5.3a	sacCer3	1,933,528	0.74	2,229,876	45,156	140,206	2,246	0.63
2024-11-28-MS241108L06_exp241101_MS917_SCGEur_i_1.5hr-arrest_18min-EU-chase_input	2x150	STAR-2.5.3a	S_pombe	1,994,977	0.76	856,133	67,715	28,667	1,629	0.24
2024-11-28-MS241108L06_exp241101_MS917_SCGEur_i_1.5hr-arrest_18min-EU-chase_input	2x150	STAR-2.5.3a	sacCer3	1,994,977	0.75	2,331,746	44,400	145,627	3,035	0.63
2024-11-28-MS241108L07_exp241101_MS917_SCGEur_i_1.5hr-arrest_28min-EU-chase_input	2x150	STAR-2.5.3a	S_pombe	2,943,685	0.72	1,362,385	103,829	44,878	2,742	0.26
2024-11-28-MS241108L07_exp241101_MS917_SCGEur_i_1.5hr-arrest_28min-EU-chase_input	2x150	STAR-2.5.3a	sacCer3	2,943,685	0.71	3,389,768	60,264	207,293	4,105	0.62
2024-11-28-MS241108L08_exp241101_MS917_SCGEur_i_1.5hr-arrest_44min-EU-chase_input	2x150	STAR-2.5.3a	S_pombe	2,301,216	0.75	909,714	72,628	28,715	1,799	0.22
2024-11-28-MS241108L08_exp241101_MS917_SCGEur_i_1.5hr-arrest_44min-EU-chase_input	2x150	STAR-2.5.3a	sacCer3	2,301,216	0.73	2,826,944	49,378	164,119	3,129	0.66
2024-11-28-MS241108L09_exp241101_MS917_SCGEur_i_7.5hr-arrest_no-EU_input	2x150	STAR-2.5.3a	S_pombe	2,149,925	0.77	920,631	72,783	33,845	1,881	0.24
2024-11-28-MS241108L09_exp241101_MS917_SCGEur_i_7.5hr-arrest_no-EU_input	2x150	STAR-2.5.3a	sacCer3	2,149,925	0.76	2,105,332	34,214	199,475	4,641	0.55
2024-11-28-MS241108L10_exp241101_MS917_SCGEur_i_7.5hr-arrest_04min-EU-chase_input	2x150	STAR-2.5.3a	S_pombe	2,109,296	0.76	989,616	76,986	36,426	2,064	0.26
2024-11-28-MS241108L10_exp241101_MS917_SCGEur_i_7.5hr-arrest_04min-EU-chase_input	2x150	STAR-2.5.3a	sacCer3	2,109,296	0.75	2,110,713	34,581	195,752	4,188	0.56
2024-11-28-MS241108L11_exp241101_MS917_SCGEur_i_7.5hr-arrest_07min-EU-chase_input	2x150	STAR-2.5.3a	S_pombe	2,571,248	0.73	1,254,382	97,800	46,970	2,812	0.27
2024-11-28-MS241108L11_exp241101_MS917_SCGEur_i_7.5hr-arrest_07min-EU-chase_input	2x150	STAR-2.5.3a	sacCer3	2,571,248	0.73	2,548,398	42,644	240,360	4,766	0.55
2024-11-28-MS241108L12_exp241101_MS917_SCGEur_i_7.5hr-arrest_10min-EU-chase_input	2x150	STAR-2.5.3a	S_pombe	2,273,087	0.75	1,060,044	81,550	39,915	2,049	0.26
2024-11-28-MS241108L12_exp241101_MS917_SCGEur_i_7.5hr-arrest_10min-EU-chase_input	2x150	STAR-2.5.3a	sacCer3	2,273,087	0.74	2,272,244	38,082	216,285	4,609	0.56
2024-11-28-MS241108L13_exp241101_MS917_SCGEur_i_7.5hr-arrest_13min-EU-chase_input	2x150	STAR-2.5.3a	S_pombe	2,338,425	0.75	1,139,996	89,286	42,199	2,585	0.27
2024-11-28-MS241108L13_exp241101_MS917_SCGEur_i_7.5hr-arrest_13min-EU-chase_input	2x150	STAR-2.5.3a	sacCer3	2,338,425	0.74	2,330,553	40,959	220,956	4,212	0.56
2024-11-28-MS241108L14_exp241101_MS917_SCGEur_i_7.5hr-arrest_18min-EU-chase_input	2x150	STAR-2.5.3a	S_pombe	2,475,478	0.74	1,199,594	93,428	45,538	3,216	0.27
2024-11-28-MS241108L14_exp241101_MS917_SCGEur_i_7.5hr-arrest_18min-EU-chase_input	2x150	STAR-2.5.3a	sacCer3	2,475,478	0.74	2,441,342	42,592	231,972	5,344	0.55
2024-11-28-MS241108L15_exp241101_MS917_SCGEur_i_7.5hr-arrest_28min-EU-chase_input	2x150	STAR-2.5.3a	S_pombe	2,288,543	0.75	1,106,714	86,626	40,754	2,422	0.27
2024-11-28-MS241108L15_exp241101_MS917_SCGEur_i_7.5hr-arrest_28min-EU-chase_input	2x150	STAR-2.5.3a	sacCer3	2,288,543	0.75	2,271,760	37,494	215,231	3,479	0.55
2024-11-28-MS241108L16_exp241101_MS917_SCGEur_i_7.5hr-arrest_44min-EU-chase_input	2x150	STAR-2.5.3a	S_pombe	2,362,443	0.74	1,122,788	89,846	38,941	2,081	0.27
2024-11-28-MS241108L16_exp241101_MS917_SCGEur_i_7.5hr-arrest_44min-EU-chase_input	2x150	STAR-2.5.3a	sacCer3	2,362,443	0.74	2,383,412	38,258	214,506	3,868	0.56
2024-11-28-MS241108L17_exp241101_MS917_SCGEur_i_1.5hr-arrest_no-EU_EU-enrich	2x150	STAR-2.5.3a	S_pombe	14,317,496	0.54	21,198,351	1,089,551	445,998	68,202	0.80
2024-11-28-MS241108L17_exp241101_MS917_SCGEur_i_1.5hr-arrest_no-EU_EU-enrich	2x150	STAR-2.5.3a	sacCer3	14,317,496	0.74	497,579	6,277	67,593	767	0.02
2024-11-28-MS241108L18_exp241101_MS917_SCGEur_i_1.5hr-arrest_04min-EU-chase_EU-enrich	2x150	STAR-2.5.3a	S_pombe	16,584,146	0.62	11,808,158	606,640	271,949	31,791	0.38
2024-11-28-MS241108L18_exp241101_MS917_SCGEur_i_1.5hr-arrest_04min-EU-chase_EU-enrich	2x150	STAR-2.5.3a	sacCer3	16,584,146	0.63	13,565,588	151,012	823,519	28,249	0.44
2024-11-28-MS241108L19_exp241101_MS917_SCGEur_i_1.5hr-arrest_07min-EU-chase_EU-enrich	2x150	STAR-2.5.3a	S_pombe	18,060,531	0.62	13,077,006	683,410	277,025	38,167	0.39
2024-11-28-MS241108L19_exp241101_MS917_SCGEur_i_1.5hr-arrest_07min-EU-chase_EU-enrich	2x150	STAR-2.5.3a	sacCer3	18,060,531	0.63	14,282,480	174,988	880,288	30,538	0.43

MAPPING STATS

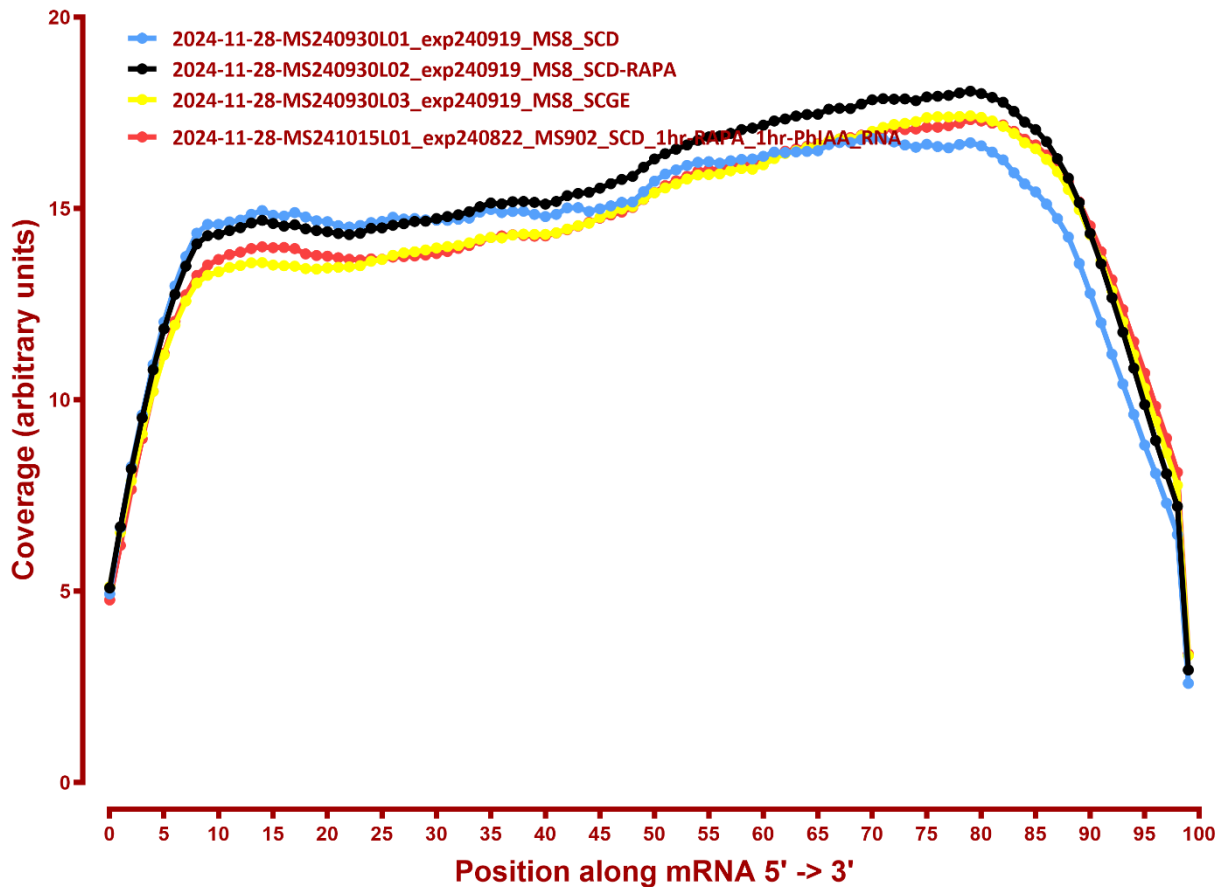
2024-11-28-MS241108L20_exp241101_MS917_SCGEurI_1.5hr-arrest_10min-EU-chase_EU-enrich	2x150	STAR-2.5.3a	S_pombe	16,820,316	0.62	13,131,146	683,848	276,930	36,982	0.42
2024-11-28-MS241108L20_exp241101_MS917_SCGEurI_1.5hr-arrest_10min-EU-chase_EU-enrich	2x150	STAR-2.5.3a	sacCer3	16,820,316	0.64	11,969,009	153,997	765,798	26,514	0.38
2024-11-28-MS241108L21_exp241101_MS917_SCGEurI_1.5hr-arrest_13min-EU-chase_EU-enrich	2x150	STAR-2.5.3a	S_pombe	16,584,046	0.62	14,155,652	753,984	297,913	40,283	0.46
2024-11-28-MS241108L21_exp241101_MS917_SCGEurI_1.5hr-arrest_13min-EU-chase_EU-enrich	2x150	STAR-2.5.3a	sacCer3	16,584,046	0.64	10,759,521	151,601	722,520	21,686	0.35
2024-11-28-MS241108L22_exp241101_MS917_SCGEurI_1.5hr-arrest_18min-EU-chase_EU-enrich	2x150	STAR-2.5.3a	S_pombe	17,172,131	0.60	17,129,240	904,854	356,232	51,424	0.54
2024-11-28-MS241108L22_exp241101_MS917_SCGEurI_1.5hr-arrest_18min-EU-chase_EU-enrich	2x150	STAR-2.5.3a	sacCer3	17,172,131	0.65	8,903,168	135,318	632,446	18,502	0.28
2024-11-28-MS241108L23_exp241101_MS917_SCGEurI_1.5hr-arrest_28min-EU-chase_EU-enrich	2x150	STAR-2.5.3a	S_pombe	19,347,518	0.56	23,751,110	1,232,246	495,401	75,841	0.66
2024-11-28-MS241108L23_exp241101_MS917_SCGEurI_1.5hr-arrest_28min-EU-chase_EU-enrich	2x150	STAR-2.5.3a	sacCer3	19,347,518	0.66	5,537,982	90,794	462,805	11,075	0.16
2024-11-28-MS241108L24_exp241101_MS917_SCGEurI_1.5hr-arrest_44min-EU-chase_EU-enrich	2x150	STAR-2.5.3a	S_pombe	15,272,986	0.58	21,066,743	1,114,685	427,243	70,931	0.74
2024-11-28-MS241108L24_exp241101_MS917_SCGEurI_1.5hr-arrest_44min-EU-chase_EU-enrich	2x150	STAR-2.5.3a	sacCer3	15,272,986	0.73	2,120,441	28,483	211,695	2,863	0.08
2024-11-28-MS241108L25_exp241101_MS917_SCGEurI_7.5hr-arrest_no-EU_EU-enrich	2x150	STAR-2.5.3a	S_pombe	15,142,858	0.56	22,355,560	1,185,448	480,698	67,080	0.80
2024-11-28-MS241108L25_exp241101_MS917_SCGEurI_7.5hr-arrest_no-EU_EU-enrich	2x150	STAR-2.5.3a	sacCer3	15,142,858	0.76	511,790	6,128	102,470	1,264	0.02
2024-11-28-MS241108L26_exp241101_MS917_SCGEurI_7.5hr-arrest_04min-EU-chase_EU-enrich	2x150	STAR-2.5.3a	S_pombe	18,808,762	0.62	13,627,422	717,926	294,266	37,378	0.39
2024-11-28-MS241108L26_exp241101_MS917_SCGEurI_7.5hr-arrest_04min-EU-chase_EU-enrich	2x150	STAR-2.5.3a	sacCer3	18,808,762	0.62	14,500,800	155,892	1,169,679	56,095	0.42
2024-11-28-MS241108L27_exp241101_MS917_SCGEurI_7.5hr-arrest_07min-EU-chase_EU-enrich	2x150	STAR-2.5.3a	S_pombe	18,863,046	0.59	14,409,871	764,491	311,885	43,273	0.41
2024-11-28-MS241108L27_exp241101_MS917_SCGEurI_7.5hr-arrest_07min-EU-chase_EU-enrich	2x150	STAR-2.5.3a	sacCer3	18,863,046	0.60	13,945,566	159,594	1,159,059	52,337	0.41
2024-11-28-MS241108L28_exp241101_MS917_SCGEurI_7.5hr-arrest_10min-EU-chase_EU-enrich	2x150	STAR-2.5.3a	S_pombe	15,785,196	0.61	12,285,278	661,526	262,949	33,449	0.42
2024-11-28-MS241108L28_exp241101_MS917_SCGEurI_7.5hr-arrest_10min-EU-chase_EU-enrich	2x150	STAR-2.5.3a	sacCer3	15,785,196	0.61	11,577,584	145,716	968,309	45,017	0.40
2024-11-28-MS241108L29_exp241101_MS917_SCGEurI_7.5hr-arrest_13min-EU-chase_EU-enrich	2x150	STAR-2.5.3a	S_pombe	15,899,496	0.62	13,655,383	714,943	293,944	36,078	0.46
2024-11-28-MS241108L29_exp241101_MS917_SCGEurI_7.5hr-arrest_13min-EU-chase_EU-enrich	2x150	STAR-2.5.3a	sacCer3	15,899,496	0.63	10,342,339	133,367	883,194	38,672	0.36
2024-11-28-MS241108L30_exp241101_MS917_SCGEurI_7.5hr-arrest_18min-EU-chase_EU-enrich	2x150	STAR-2.5.3a	S_pombe	15,071,974	0.62	14,097,511	733,989	303,380	40,940	0.50
2024-11-28-MS241108L30_exp241101_MS917_SCGEurI_7.5hr-arrest_18min-EU-chase_EU-enrich	2x150	STAR-2.5.3a	sacCer3	15,071,974	0.64	8,656,609	119,443	799,972	30,630	0.32
2024-11-28-MS241108L31_exp241101_MS917_SCGEurI_7.5hr-arrest_28min-EU-chase_EU-enrich	2x150	STAR-2.5.3a	S_pombe	17,324,544	0.58	19,365,500	1,008,676	421,351	60,503	0.60
2024-11-28-MS241108L31_exp241101_MS917_SCGEurI_7.5hr-arrest_28min-EU-chase_EU-enrich	2x150	STAR-2.5.3a	sacCer3	17,324,544	0.62	7,166,433	112,735	760,242	25,896	0.23
2024-11-28-MS241108L32_exp241101_MS917_SCGEurI_7.5hr-arrest_44min-EU-chase_EU-enrich	2x150	STAR-2.5.3a	S_pombe	17,642,997	0.56	22,648,345	1,205,639	480,356	75,502	0.69
2024-11-28-MS241108L32_exp241101_MS917_SCGEurI_7.5hr-arrest_44min-EU-chase_EU-enrich	2x150	STAR-2.5.3a	sacCer3	17,642,997	0.64	4,010,898	65,656	503,804	15,054	0.13

	Exonic	Intergenic	Intronic
2024-11-28-MS240930L01_exp240919_MS8_SCD	0.93	0.06	0.00
2024-11-28-MS240930L02_exp240919_MS8_SCD-RAPA	0.93	0.07	0.00
2024-11-28-MS240930L03_exp240919_MS8_SCGE	0.92	0.08	0.00
2024-11-28-MS241015L01_exp240822_MS902_SCD_1hr-RAPA_1hr-PhIAA_RNA	0.92	0.08	0.00
2024-11-28-MS241015L02_exp240822_MS902_SCD_1hr-RAPA_1hr-DMSO_RNA	0.93	0.07	0.00
2024-11-28-MS241015L03_exp240822_MS903_SCD_1hr-RAPA_1hr-PhIAA_RNA	0.92	0.08	0.00
2024-11-28-MS241015L04_exp240822_MS903_SCD_1hr-RAPA_1hr-DMSO_RNA	0.93	0.07	0.00
2024-11-28-MS241015L05_exp240822_MS904_SCD_1hr-RAPA_1hr-PhIAA_RNA	0.93	0.07	0.00
2024-11-28-MS241015L06_exp240822_MS904_SCD_1hr-RAPA_1hr-DMSO_RNA	0.93	0.07	0.00
2024-11-28-MS241015L07_exp240822_MS905_SCD_1hr-RAPA_1hr-PhIAA_RNA	0.93	0.06	0.00
2024-11-28-MS241015L08_exp240822_MS905_SCD_1hr-RAPA_1hr-DMSO_RNA	0.93	0.07	0.00
2024-11-28-MS241015L09_exp240828_MS69_SCGE_1.5hr-arrest_1hr-DMSO_RNA	0.92	0.08	0.00
2024-11-28-MS241015L10_exp240828_MS69_SCGE_1.5hr-arrest_1hr-PhIAA_RNA	0.92	0.08	0.00
2024-11-28-MS241015L11_exp240828_MS69_SCGE_1.5hr-arrest_30min-PhIAA_RNA	0.92	0.07	0.00
2024-11-28-MS241015L12_exp240828_MS69_SCGE_8hr-arrest_1hr-DMSO_RNA	0.92	0.08	0.00
2024-11-28-MS241015L13_exp240828_MS69_SCGE_8hr-arrest_1hr-PhIAA_RNA	0.92	0.08	0.00
2024-11-28-MS241015L14_exp240828_MS69_SCGE_8hr-arrest_30min-PhIAA_RNA	0.93	0.07	0.00
2024-11-28-MS241015L15_exp240828_MS497_SCGE_1.5hr-arrest_1hr-DMSO_RNA	0.92	0.07	0.00
2024-11-28-MS241015L16_exp240828_MS497_SCGE_1.5hr-arrest_1hr-PhIAA_RNA	0.91	0.09	0.00
2024-11-28-MS241015L17_exp240828_MS497_SCGE_1.5hr-arrest_30min-PhIAA_RNA	0.91	0.09	0.00
2024-11-28-MS241015L18_exp240828_MS497_SCGE_8hr-arrest_1hr-DMSO_RNA	0.92	0.08	0.00
2024-11-28-MS241015L19_exp240828_MS497_SCGE_8hr-arrest_1hr-PhIAA_RNA	0.90	0.09	0.00
2024-11-28-MS241015L20_exp240828_MS497_SCGE_8hr-arrest_30min-PhIAA_RNA	0.91	0.09	0.00
2024-11-28-MS241015L21_exp240607_MS501_SCGE_1.5hr-arrest_1hr-DMSO_RNA	0.92	0.07	0.00
2024-11-28-MS241015L22_exp240607_MS501_SCGE_1.5hr-arrest_1hr-PhIAA_RNA	0.91	0.09	0.00
2024-11-28-MS241015L23_exp240607_MS501_SCGE_1.5hr-arrest_30min-PhIAA_RNA	0.91	0.09	0.00
2024-11-28-MS241015L24_exp240607_MS501_SCGE_8hr-arrest_1hr-DMSO_RNA	0.92	0.08	0.00
2024-11-28-MS241015L25_exp240607_MS501_SCGE_8hr-arrest_1hr-PhIAA_RNA	0.91	0.09	0.00
2024-11-28-MS241015L26_exp240607_MS501_SCGE_8hr-arrest_30min-PhIAA_RNA	0.91	0.09	0.00
2024-11-28-MS241108L01_exp241101_MS917_SCGEuri_1.5hr-arrest_no-EU_input	0.90	0.09	0.00
2024-11-28-MS241108L02_exp241101_MS917_SCGEuri_1.5hr-arrest_04min-EU-chase_input	0.90	0.10	0.00
2024-11-28-MS241108L03_exp241101_MS917_SCGEuri_1.5hr-arrest_07min-EU-chase_input	0.90	0.10	0.00

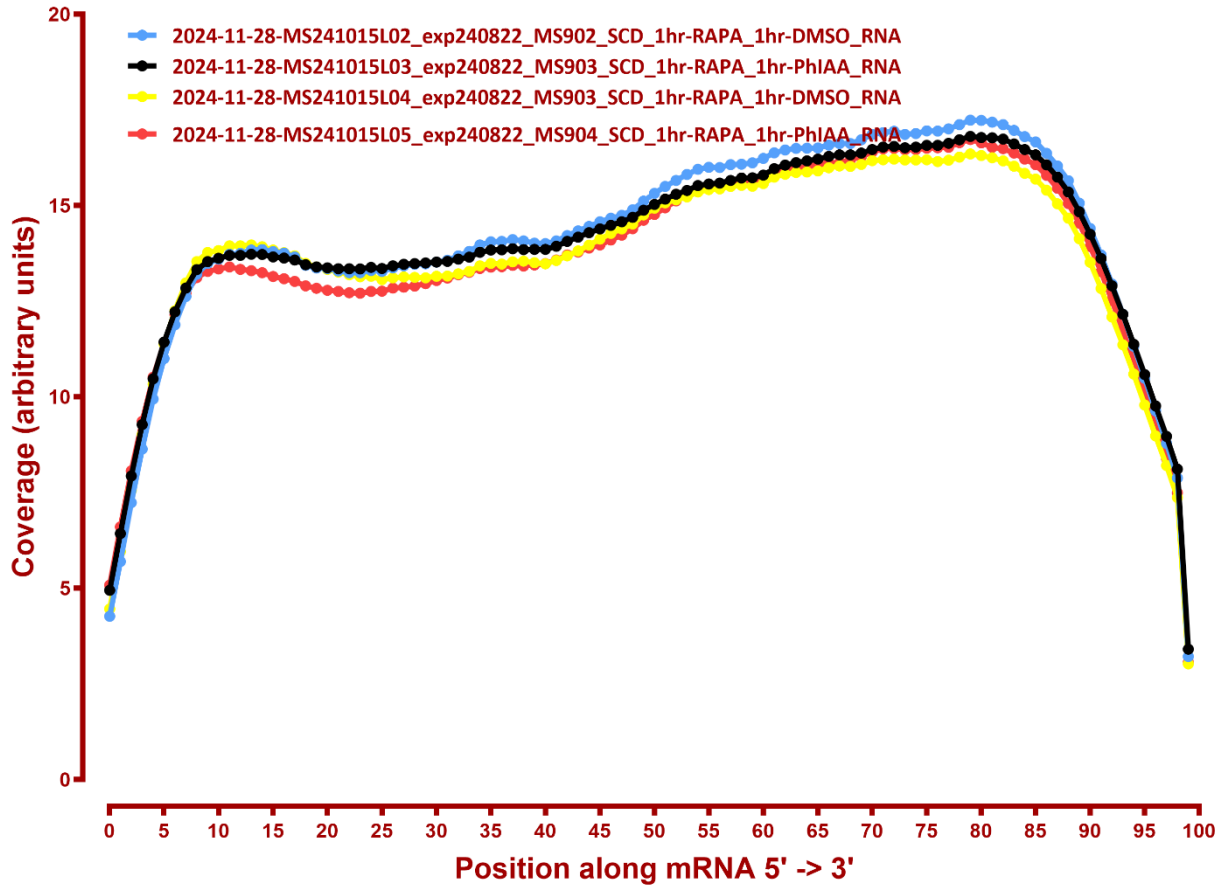
2024-11-28-MS241108L04_exp241101_MS917_SCGEurI_1.5hr-arrest_10min-EU-chase_input	0.90	0.10	0.00
2024-11-28-MS241108L05_exp241101_MS917_SCGEurI_1.5hr-arrest_13min-EU-chase_input	0.90	0.10	0.00
2024-11-28-MS241108L06_exp241101_MS917_SCGEurI_1.5hr-arrest_18min-EU-chase_input	0.90	0.10	0.00
2024-11-28-MS241108L07_exp241101_MS917_SCGEurI_1.5hr-arrest_28min-EU-chase_input	0.90	0.10	0.00
2024-11-28-MS241108L08_exp241101_MS917_SCGEurI_1.5hr-arrest_44min-EU-chase_input	0.89	0.10	0.00
2024-11-28-MS241108L09_exp241101_MS917_SCGEurI_7.5hr-arrest_no-EU_input	0.89	0.11	0.00
2024-11-28-MS241108L10_exp241101_MS917_SCGEurI_7.5hr-arrest_04min-EU-chase_input	0.90	0.10	0.00
2024-11-28-MS241108L11_exp241101_MS917_SCGEurI_7.5hr-arrest_07min-EU-chase_input	0.89	0.10	0.00
2024-11-28-MS241108L12_exp241101_MS917_SCGEurI_7.5hr-arrest_10min-EU-chase_input	0.89	0.10	0.00
2024-11-28-MS241108L13_exp241101_MS917_SCGEurI_7.5hr-arrest_13min-EU-chase_input	0.89	0.10	0.00
2024-11-28-MS241108L14_exp241101_MS917_SCGEurI_7.5hr-arrest_18min-EU-chase_input	0.89	0.11	0.00
2024-11-28-MS241108L15_exp241101_MS917_SCGEurI_7.5hr-arrest_28min-EU-chase_input	0.89	0.11	0.00
2024-11-28-MS241108L16_exp241101_MS917_SCGEurI_7.5hr-arrest_44min-EU-chase_input	0.88	0.11	0.00
2024-11-28-MS241108L17_exp241101_MS917_SCGEurI_1.5hr-arrest_no-EU_EU-enrich	0.90	0.09	0.00
2024-11-28-MS241108L18_exp241101_MS917_SCGEurI_1.5hr-arrest_04min-EU-chase_EU-enr	0.91	0.09	0.00
2024-11-28-MS241108L19_exp241101_MS917_SCGEurI_1.5hr-arrest_07min-EU-chase_EU-enr	0.91	0.09	0.00
2024-11-28-MS241108L20_exp241101_MS917_SCGEurI_1.5hr-arrest_10min-EU-chase_EU-enr	0.91	0.09	0.00
2024-11-28-MS241108L21_exp241101_MS917_SCGEurI_1.5hr-arrest_13min-EU-chase_EU-enr	0.91	0.09	0.00
2024-11-28-MS241108L22_exp241101_MS917_SCGEurI_1.5hr-arrest_18min-EU-chase_EU-enr	0.90	0.09	0.00
2024-11-28-MS241108L23_exp241101_MS917_SCGEurI_1.5hr-arrest_28min-EU-chase_EU-enr	0.90	0.10	0.00
2024-11-28-MS241108L24_exp241101_MS917_SCGEurI_1.5hr-arrest_44min-EU-chase_EU-enr	0.90	0.10	0.00
2024-11-28-MS241108L25_exp241101_MS917_SCGEurI_7.5hr-arrest_no-EU_EU-enrich	0.90	0.10	0.00
2024-11-28-MS241108L26_exp241101_MS917_SCGEurI_7.5hr-arrest_04min-EU-chase_EU-enr	0.90	0.09	0.00
2024-11-28-MS241108L27_exp241101_MS917_SCGEurI_7.5hr-arrest_07min-EU-chase_EU-enr	0.90	0.10	0.00
2024-11-28-MS241108L28_exp241101_MS917_SCGEurI_7.5hr-arrest_10min-EU-chase_EU-enr	0.90	0.10	0.00
2024-11-28-MS241108L29_exp241101_MS917_SCGEurI_7.5hr-arrest_13min-EU-chase_EU-enr	0.90	0.10	0.00
2024-11-28-MS241108L30_exp241101_MS917_SCGEurI_7.5hr-arrest_18min-EU-chase_EU-enr	0.90	0.10	0.00
2024-11-28-MS241108L31_exp241101_MS917_SCGEurI_7.5hr-arrest_28min-EU-chase_EU-enr	0.90	0.10	0.00
2024-11-28-MS241108L32_exp241101_MS917_SCGEurI_7.5hr-arrest_44min-EU-chase_EU-enr	0.89	0.11	0.00

COVERAGE ALL READS

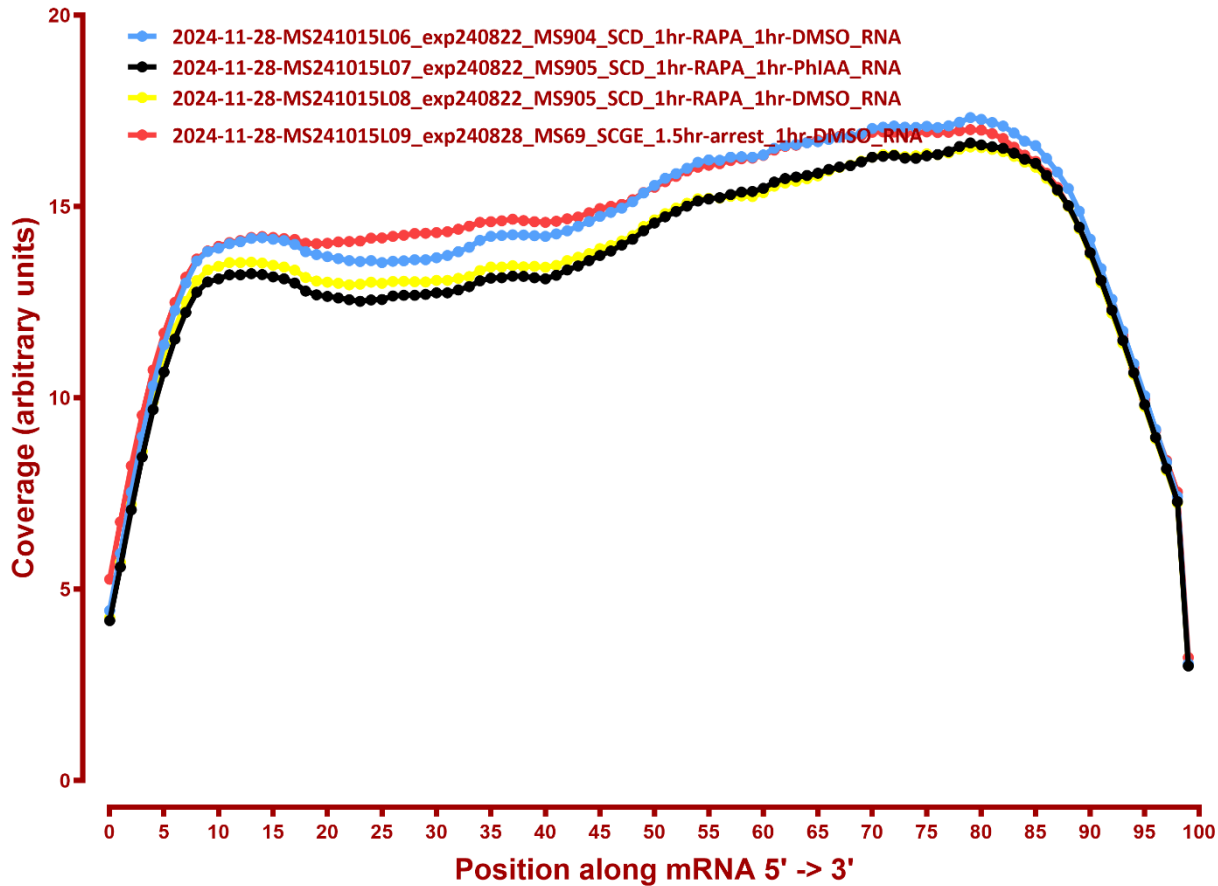
Coverage of genes; >1000bp, sacCer3



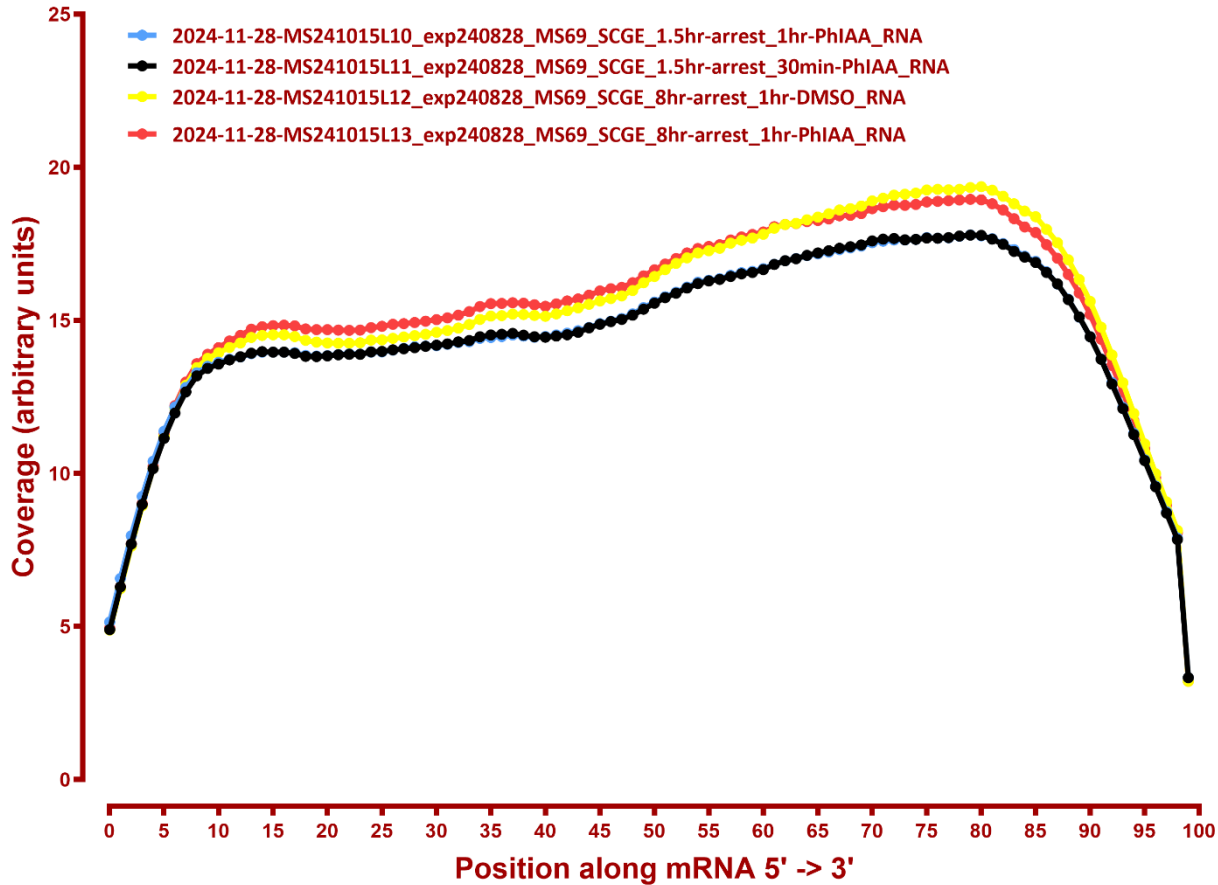
Coverage of genes; >1000bp, sacCer3



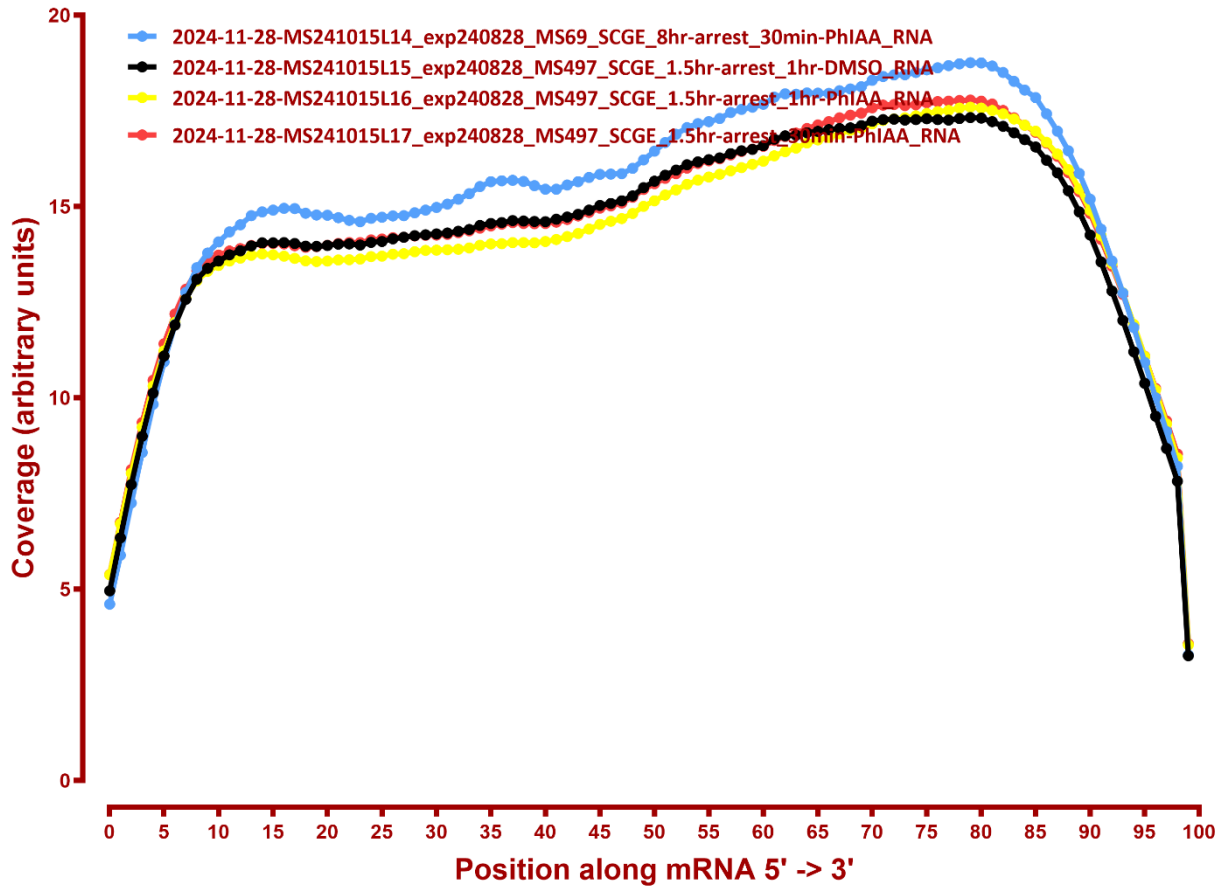
Coverage of genes; >1000bp, sacCer3



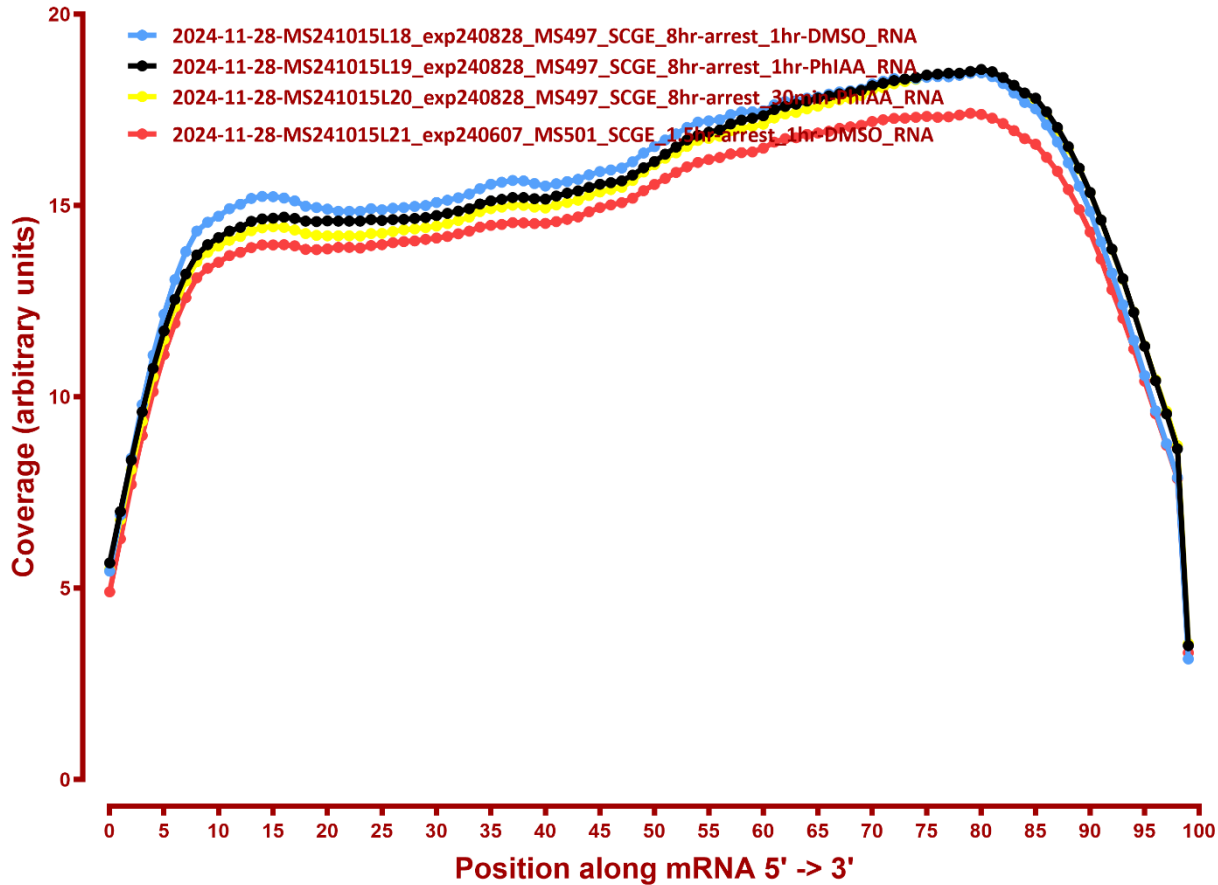
Coverage of genes; >1000bp, sacCer3



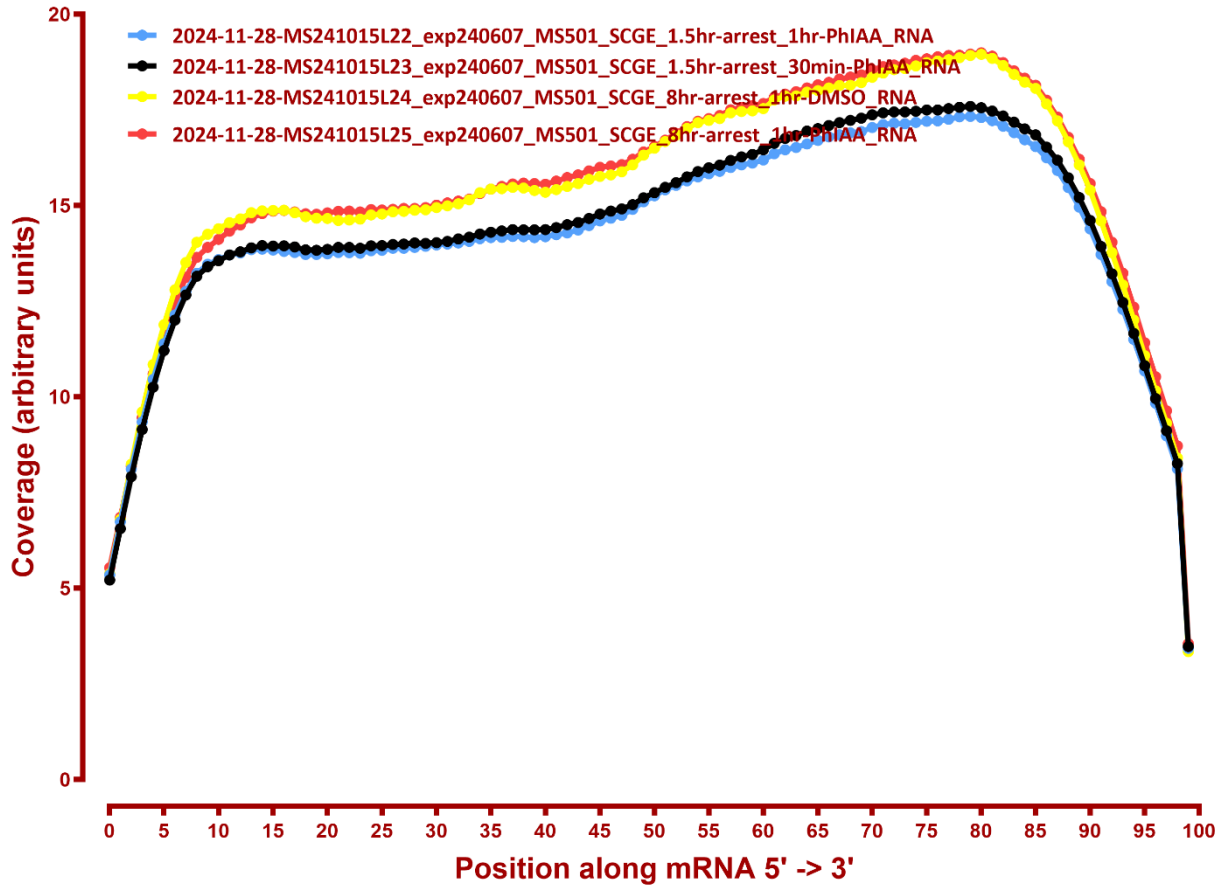
Coverage of genes; >1000bp, sacCer3



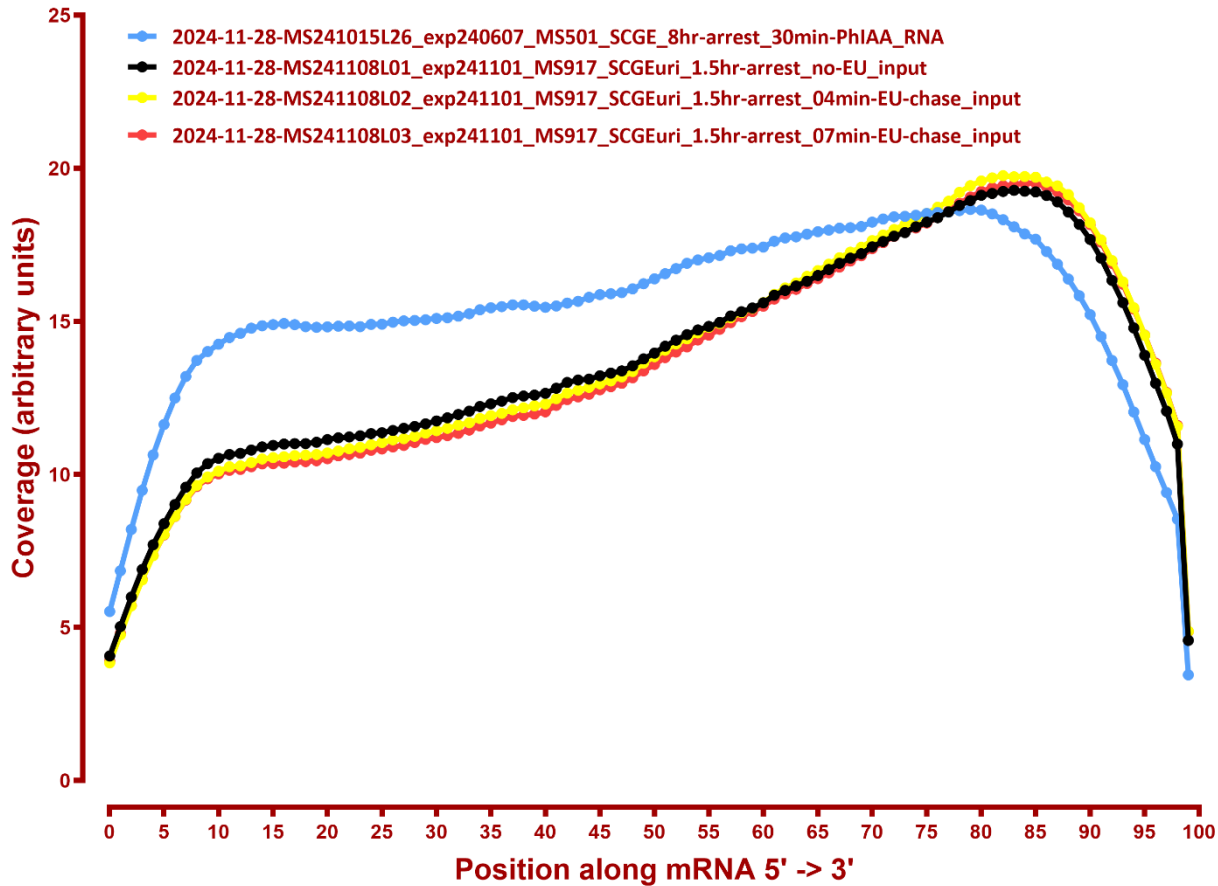
Coverage of genes; >1000bp, sacCer3



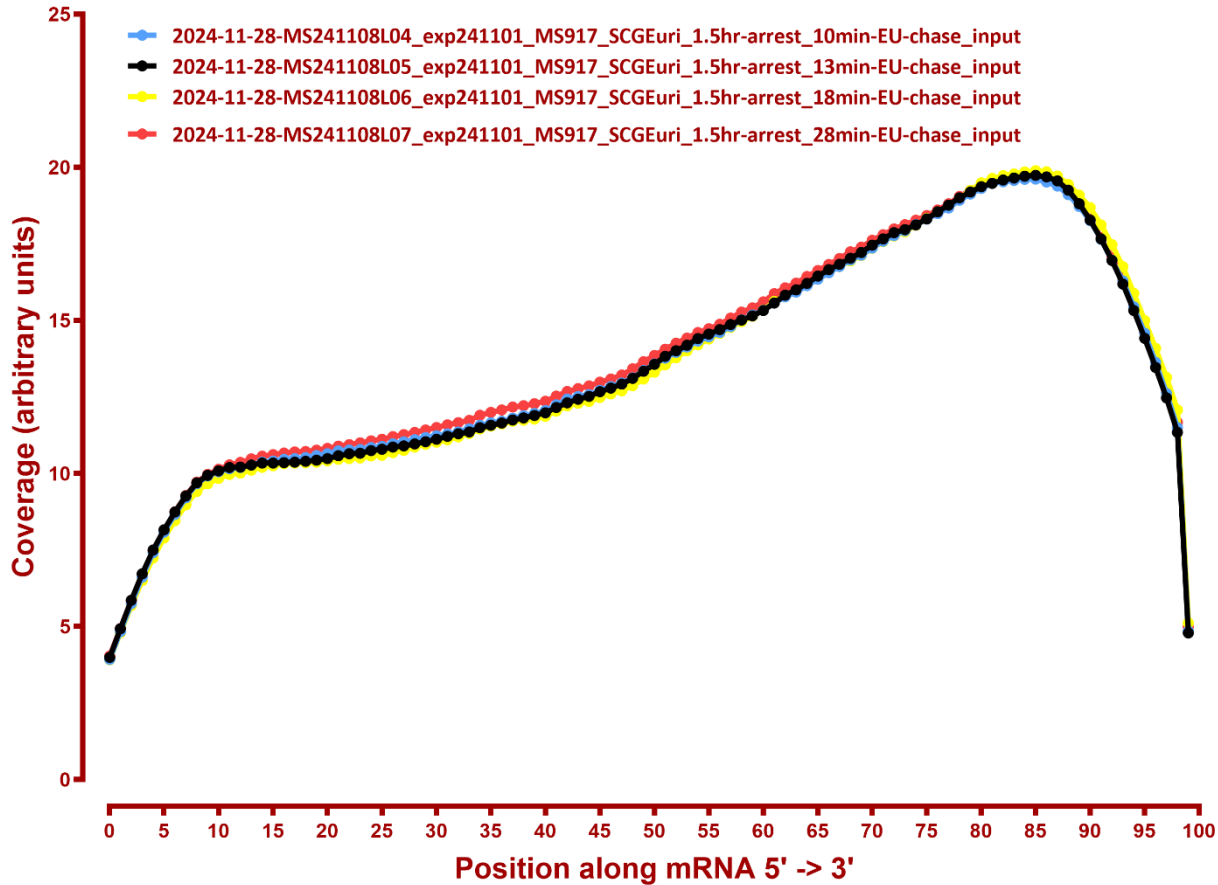
Coverage of genes; >1000bp, sacCer3



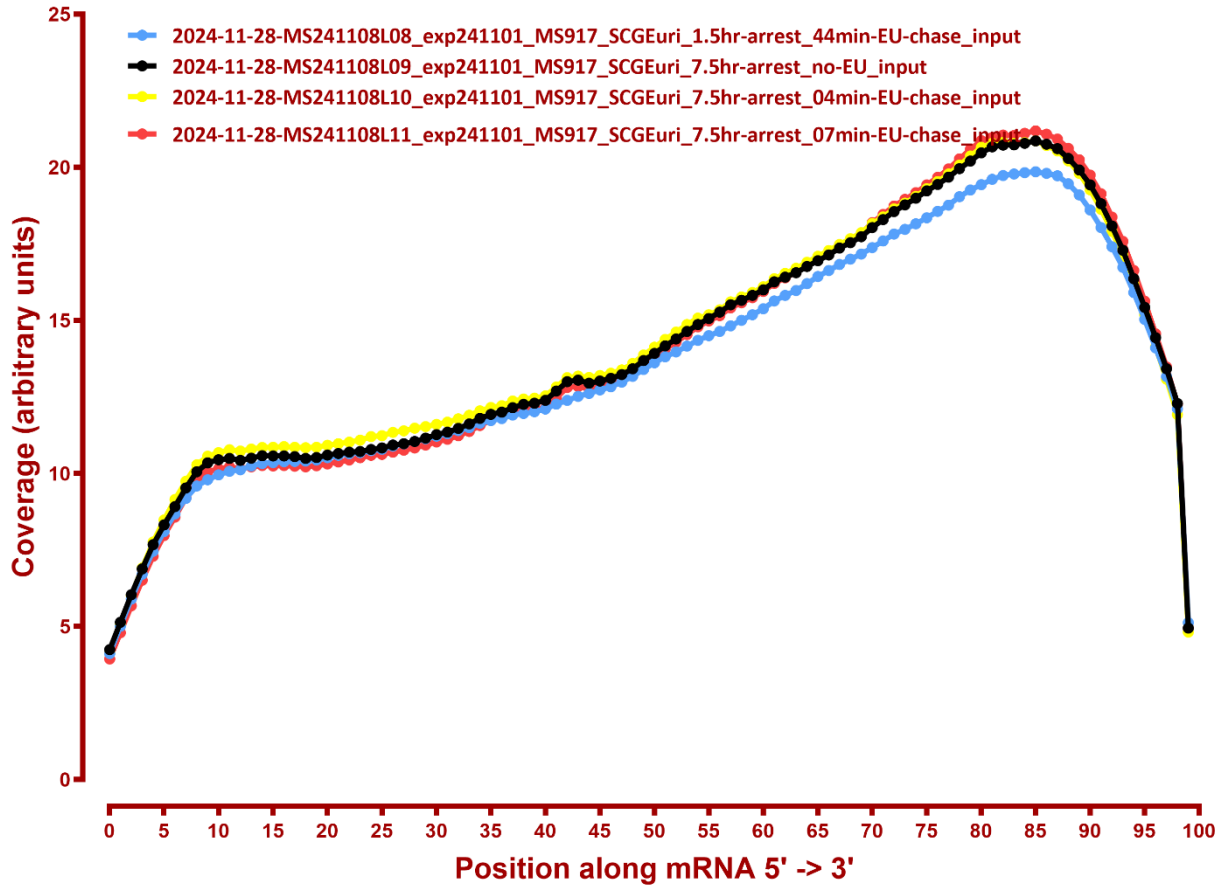
Coverage of genes; >1000bp, sacCer3



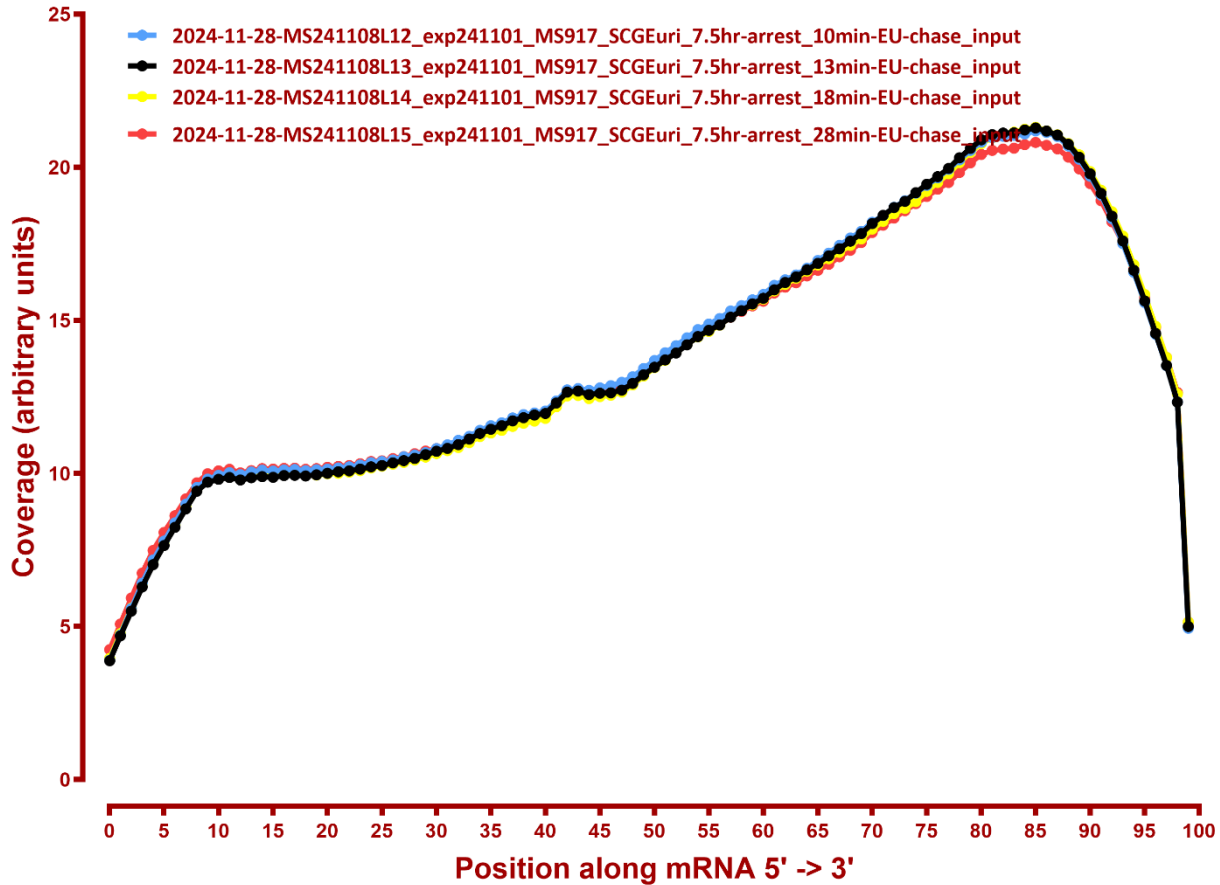
Coverage of genes; >1000bp, sacCer3



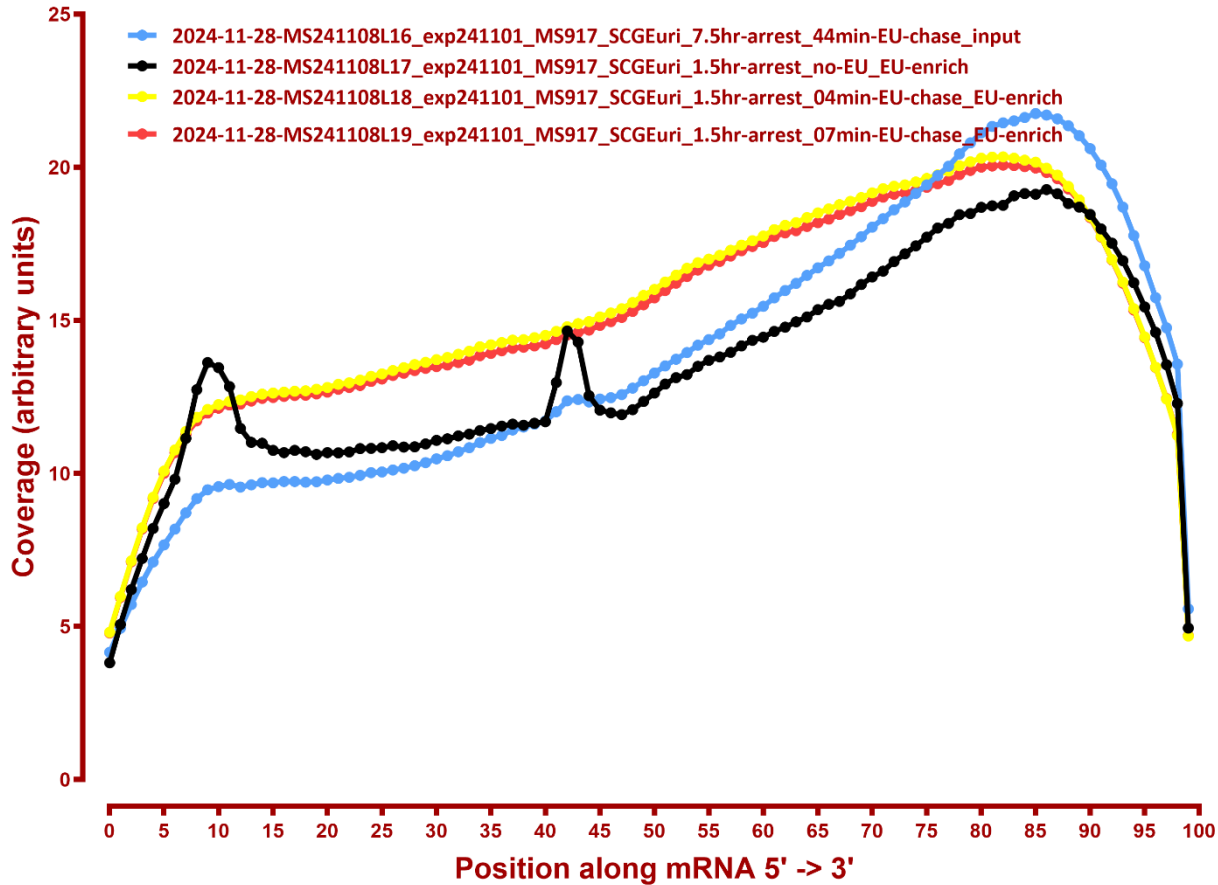
Coverage of genes; >1000bp, sacCer3



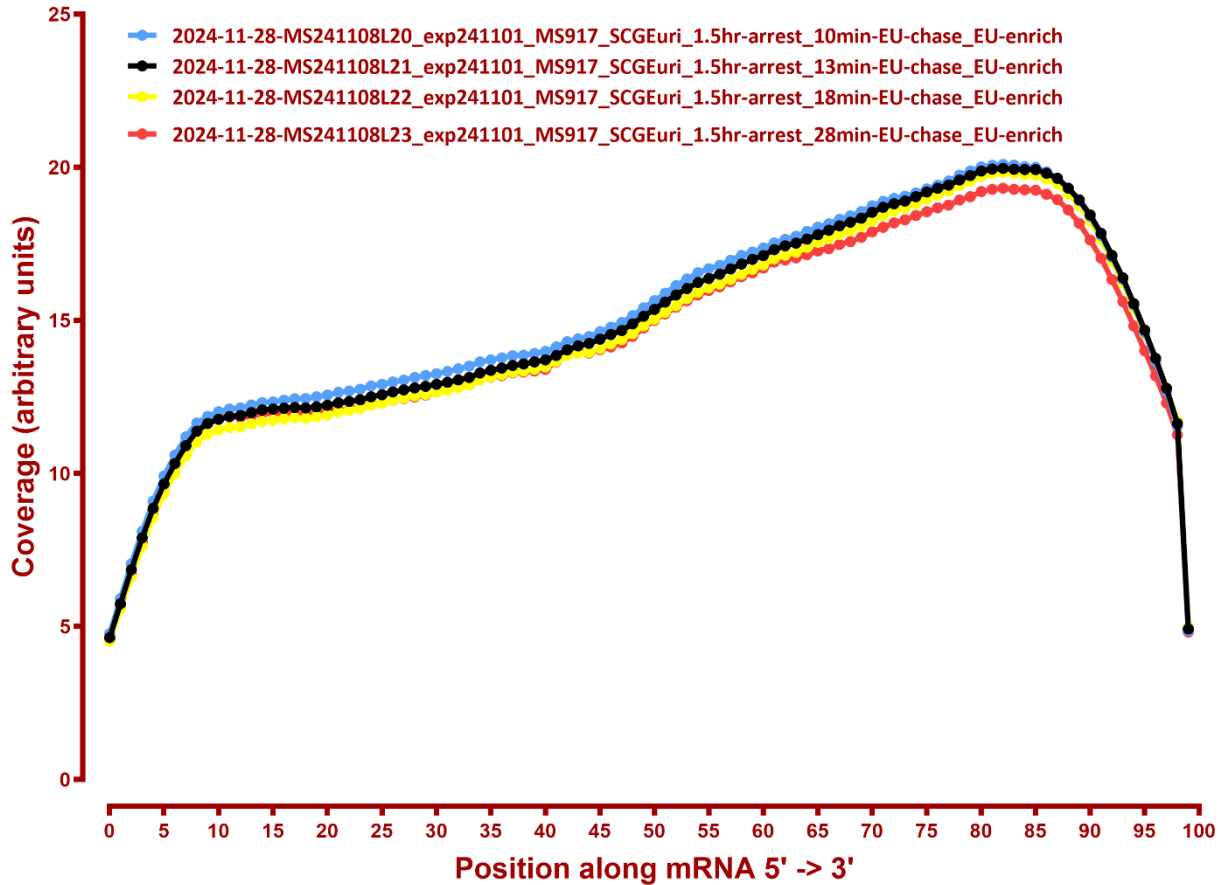
Coverage of genes; >1000bp, sacCer3



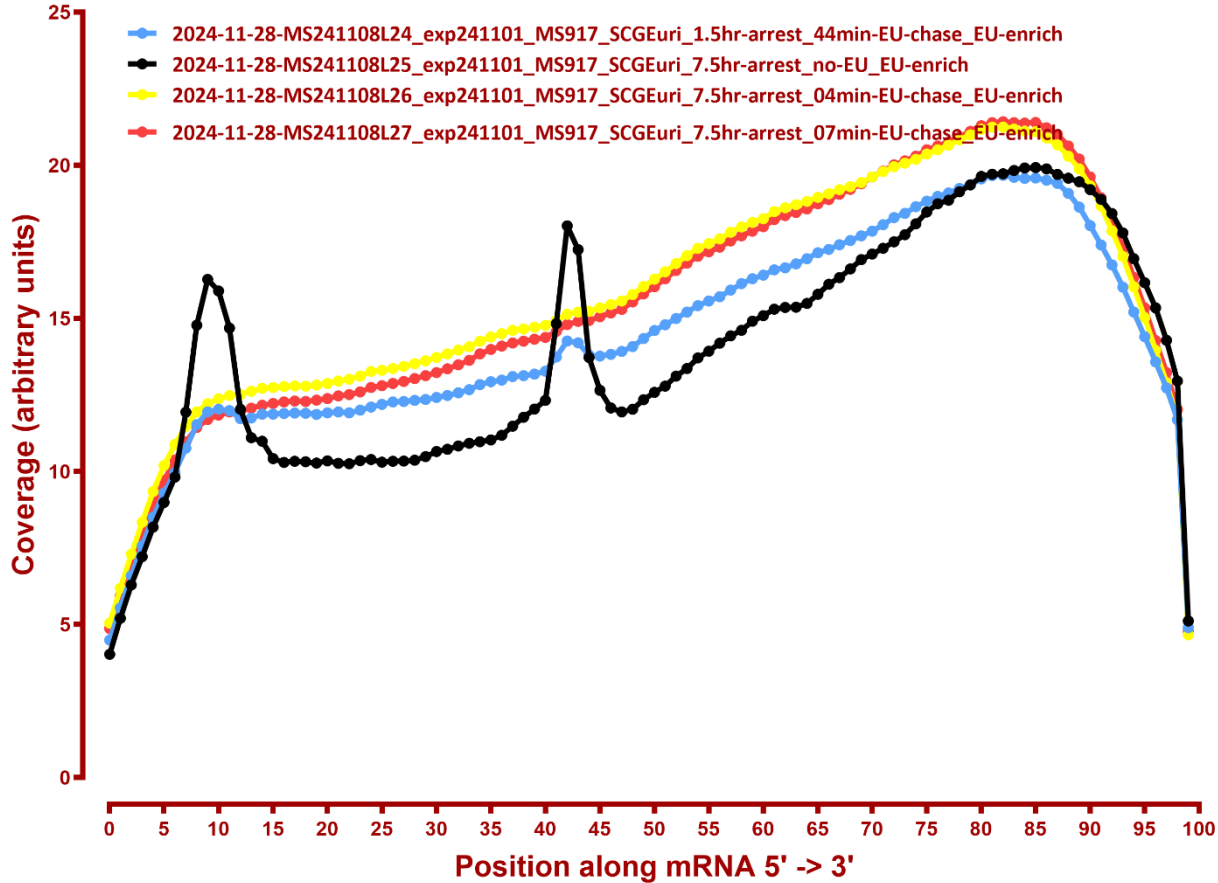
Coverage of genes; >1000bp, sacCer3



Coverage of genes; >1000bp, sacCer3



Coverage of genes; >1000bp, sacCer3



Coverage of genes; >1000bp, sacCer3

