

# MAPPING STATS

Library	Read Length	Mapping	Species	Raw fragments	Complexity	Unique	Unique Splices	Multi	Multi Splices	Fraction mapped
2024-09-13-MS240806L01_exp240514_MS69_SCGE_1.5hr-arrest_1hr-DMSO_RNA	2x150	STAR-2.5.3a	Candida	7,829,197	0.69	4,638,164	66,430	76,320	6,078	0.31
2024-09-13-MS240806L01_exp240514_MS69_SCGE_1.5hr-arrest_1hr-DMSO_RNA	2x150	STAR-2.5.3a	sacCer3	7,829,197	0.65	8,010,323	174,333	467,838	12,808	0.55
2024-09-13-MS240806L02_exp240514_MS69_SCGE_1.5hr-arrest_1hr-PhIAA_RNA	2x150	STAR-2.5.3a	Candida	5,013,630	0.74	2,615,968	41,188	47,872	3,808	0.27
2024-09-13-MS240806L02_exp240514_MS69_SCGE_1.5hr-arrest_1hr-PhIAA_RNA	2x150	STAR-2.5.3a	sacCer3	5,013,630	0.69	5,253,844	121,468	324,229	7,093	0.57
2024-09-13-MS240806L03_exp240514_MS69_SCGE_1.5hr-arrest_30min-PhIAA_RNA	2x150	STAR-2.5.3a	Candida	7,256,316	0.70	4,035,448	61,436	66,854	5,050	0.29
2024-09-13-MS240806L03_exp240514_MS69_SCGE_1.5hr-arrest_30min-PhIAA_RNA	2x150	STAR-2.5.3a	sacCer3	7,256,316	0.66	7,368,959	171,387	434,351	10,921	0.55
2024-09-13-MS240806L04_exp240514_MS69_SCGE_8hr-arrest_1hr-DMSO_RNA	2x150	STAR-2.5.3a	Candida	5,102,408	0.73	3,031,684	44,312	48,318	3,600	0.31
2024-09-13-MS240806L04_exp240514_MS69_SCGE_8hr-arrest_1hr-DMSO_RNA	2x150	STAR-2.5.3a	sacCer3	5,102,408	0.69	5,174,790	93,374	418,239	13,255	0.56
2024-09-13-MS240806L05_exp240514_MS69_SCGE_8hr-arrest_1hr-PhIAA_RNA	2x150	STAR-2.5.3a	Candida	7,513,434	0.70	4,387,902	67,508	76,095	6,215	0.30
2024-09-13-MS240806L05_exp240514_MS69_SCGE_8hr-arrest_1hr-PhIAA_RNA	2x150	STAR-2.5.3a	sacCer3	7,513,434	0.65	7,322,131	143,943	593,958	21,480	0.54
2024-09-13-MS240806L06_exp240514_MS69_SCGE_8hr-arrest_30min-PhIAA_RNA	2x150	STAR-2.5.3a	Candida	6,770,508	0.71	3,939,270	66,422	69,958	5,708	0.30
2024-09-13-MS240806L06_exp240514_MS69_SCGE_8hr-arrest_30min-PhIAA_RNA	2x150	STAR-2.5.3a	sacCer3	6,770,508	0.67	6,251,966	135,668	511,621	19,215	0.51
2024-09-13-MS240806L07_exp240718_MS798_SCGE_1.5hr-arrest_1hr-DMSO_RNA	2x150	STAR-2.5.3a	Candida	7,262,879	0.70	4,337,140	61,608	70,984	5,508	0.31
2024-09-13-MS240806L07_exp240718_MS798_SCGE_1.5hr-arrest_1hr-DMSO_RNA	2x150	STAR-2.5.3a	sacCer3	7,262,879	0.67	7,189,884	154,128	419,460	11,870	0.54
2024-09-13-MS240806L08_exp240718_MS798_SCGE_1.5hr-arrest_1hr-PhIAA_RNA	2x150	STAR-2.5.3a	Candida	6,618,848	0.70	4,900,848	67,608	82,862	6,052	0.38
2024-09-13-MS240806L08_exp240718_MS798_SCGE_1.5hr-arrest_1hr-PhIAA_RNA	2x150	STAR-2.5.3a	sacCer3	6,618,848	0.71	5,799,482	126,890	331,783	7,421	0.47
2024-09-13-MS240806L09_exp240718_MS798_SCGE_1.5hr-arrest_30min-PhIAA_RNA	2x150	STAR-2.5.3a	Candida	7,448,111	0.69	4,996,616	73,398	85,837	5,827	0.35
2024-09-13-MS240806L09_exp240718_MS798_SCGE_1.5hr-arrest_30min-PhIAA_RNA	2x150	STAR-2.5.3a	sacCer3	7,448,111	0.69	6,732,264	159,706	414,113	10,349	0.49
2024-09-13-MS240806L10_exp240718_MS798_SCGE_8hr-arrest_1hr-DMSO_RNA	2x150	STAR-2.5.3a	Candida	7,717,523	0.68	5,603,374	83,072	95,236	8,012	0.38
2024-09-13-MS240806L10_exp240718_MS798_SCGE_8hr-arrest_1hr-DMSO_RNA	2x150	STAR-2.5.3a	sacCer3	7,717,523	0.67	6,462,707	116,861	550,155	18,701	0.46
2024-09-13-MS240806L11_exp240718_MS798_SCGE_8hr-arrest_1hr-PhIAA_RNA	2x150	STAR-2.5.3a	Candida	7,697,778	0.66	6,928,701	106,895	119,576	10,952	0.47
2024-09-13-MS240806L11_exp240718_MS798_SCGE_8hr-arrest_1hr-PhIAA_RNA	2x150	STAR-2.5.3a	sacCer3	7,697,778	0.70	4,945,251	92,815	426,071	13,661	0.36
2024-09-13-MS240806L12_exp240718_MS798_SCGE_8hr-arrest_30min-PhIAA_RNA	2x150	STAR-2.5.3a	Candida	5,943,603	0.69	5,287,450	79,130	89,361	8,061	0.46
2024-09-13-MS240806L12_exp240718_MS798_SCGE_8hr-arrest_30min-PhIAA_RNA	2x150	STAR-2.5.3a	sacCer3	5,943,603	0.72	3,962,155	87,747	390,187	13,419	0.37
2024-09-13-MS240806L13_exp240718_MS798_SCGE_1.5hr-arrest_1hr-DMSO_RNA	2x150	STAR-2.5.3a	Candida	7,395,739	0.69	4,277,147	65,827	74,155	5,659	0.30
2024-09-13-MS240806L13_exp240718_MS798_SCGE_1.5hr-arrest_1hr-DMSO_RNA	2x150	STAR-2.5.3a	sacCer3	7,395,739	0.65	7,545,324	173,588	453,567	12,937	0.55
2024-09-13-MS240806L14_exp240718_MS798_SCGE_1.5hr-arrest_1hr-PhIAA_RNA	2x150	STAR-2.5.3a	Candida	7,297,459	0.68	5,885,160	87,606	100,567	9,171	0.42
2024-09-13-MS240806L14_exp240718_MS798_SCGE_1.5hr-arrest_1hr-PhIAA_RNA	2x150	STAR-2.5.3a	sacCer3	7,297,459	0.72	5,578,421	104,737	327,421	10,305	0.41
2024-09-13-MS240806L15_exp240718_MS798_SCGE_1.5hr-arrest_30min-PhIAA_RNA	2x150	STAR-2.5.3a	Candida	6,698,510	0.70	4,893,338	70,944	85,645	6,131	0.38
2024-09-13-MS240806L15_exp240718_MS798_SCGE_1.5hr-arrest_30min-PhIAA_RNA	2x150	STAR-2.5.3a	sacCer3	6,698,510	0.71	5,593,335	126,063	360,533	10,673	0.45
2024-09-13-MS240806L16_exp240718_MS798_SCGE_8hr-arrest_1hr-DMSO_RNA	2x150	STAR-2.5.3a	Candida	6,801,557	0.72	4,024,783	54,917	121,355	5,117	0.31
2024-09-13-MS240806L16_exp240718_MS798_SCGE_8hr-arrest_1hr-DMSO_RNA	2x150	STAR-2.5.3a	sacCer3	6,801,557	0.69	6,214,677	102,897	745,754	15,800	0.52

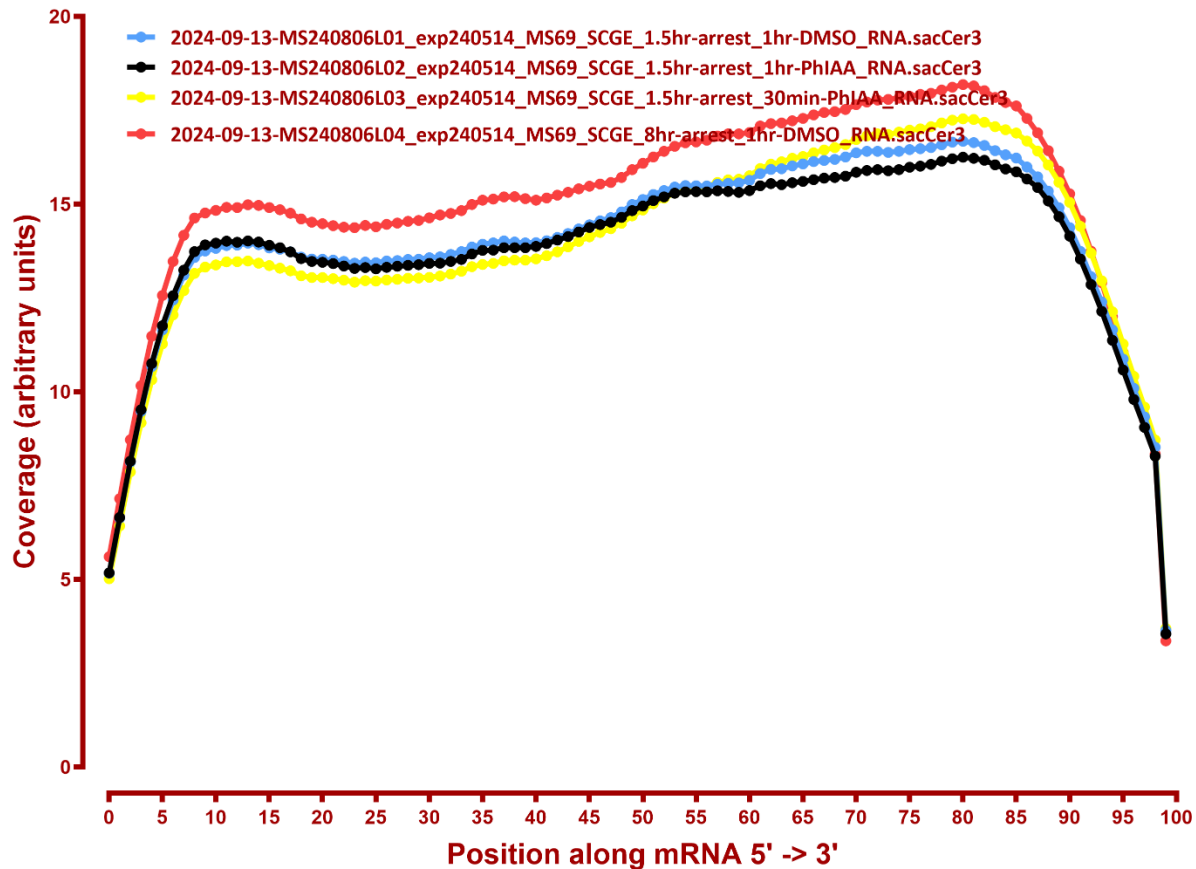
# MAPPING STATS

2024-09-13-MS240806L17_exp240718_MS798_SCGE_8hr-arrest_1hr-PhIAA_RNA	2x150	STAR-2.5.3a	Candida	7,466,377	0.63	8,224,443	116,595	133,063	14,187	0.57
2024-09-13-MS240806L17_exp240718_MS798_SCGE_8hr-arrest_1hr-PhIAA_RNA	2x150	STAR-2.5.3a	sacCer3	7,466,377	0.70	4,353,011	86,791	411,307	12,579	0.33
2024-09-13-MS240806L18_exp240718_MS798_SCGE_8hr-arrest_30min-PhIAA_RNA	2x150	STAR-2.5.3a	Candida	6,556,907	0.67	6,296,115	88,785	102,961	9,653	0.50
2024-09-13-MS240806L18_exp240718_MS798_SCGE_8hr-arrest_30min-PhIAA_RNA	2x150	STAR-2.5.3a	sacCer3	6,556,907	0.70	4,326,150	100,562	479,239	12,549	0.38
2024-09-13-MS240806L19_exp240514_MS498_SCGE_1.5hr-arrest_1hr-DMSO_RNA	2x150	STAR-2.5.3a	Candida	5,349,083	0.70	3,337,177	45,893	51,559	4,133	0.32
2024-09-13-MS240806L19_exp240514_MS498_SCGE_1.5hr-arrest_1hr-DMSO_RNA	2x150	STAR-2.5.3a	sacCer3	5,349,083	0.66	5,729,033	122,199	346,460	9,648	0.58
2024-09-13-MS240806L20_exp240514_MS498_SCGE_1.5hr-arrest_1hr-PhIAA_RNA	2x150	STAR-2.5.3a	Candida	4,688,349	0.71	2,981,296	41,508	48,396	3,142	0.33
2024-09-13-MS240806L20_exp240514_MS498_SCGE_1.5hr-arrest_1hr-PhIAA_RNA	2x150	STAR-2.5.3a	sacCer3	4,688,349	0.72	5,016,659	99,967	232,656	6,072	0.57
2024-09-13-MS240806L21_exp240514_MS498_SCGE_1.5hr-arrest_30min-PhIAA_RNA	2x150	STAR-2.5.3a	Candida	4,583,155	0.72	2,681,674	37,800	44,006	3,060	0.30
2024-09-13-MS240806L21_exp240514_MS498_SCGE_1.5hr-arrest_30min-PhIAA_RNA	2x150	STAR-2.5.3a	sacCer3	4,583,155	0.71	5,077,982	91,998	248,058	6,938	0.59
2024-09-13-MS240806L22_exp240514_MS498_SCGE_8hr-arrest_1hr-DMSO_RNA	2x150	STAR-2.5.3a	Candida	7,257,277	0.66	5,677,607	75,355	86,797	7,725	0.40
2024-09-13-MS240806L22_exp240514_MS498_SCGE_8hr-arrest_1hr-DMSO_RNA	2x150	STAR-2.5.3a	sacCer3	7,257,277	0.64	6,619,754	107,364	571,384	18,602	0.50
2024-09-13-MS240806L23_exp240514_MS498_SCGE_8hr-arrest_1hr-PhIAA_RNA	2x150	STAR-2.5.3a	Candida	6,807,489	0.66	5,680,424	76,028	85,884	7,106	0.43
2024-09-13-MS240806L23_exp240514_MS498_SCGE_8hr-arrest_1hr-PhIAA_RNA	2x150	STAR-2.5.3a	sacCer3	6,807,489	0.69	5,909,244	86,918	399,574	11,682	0.47
2024-09-13-MS240806L24_exp240514_MS498_SCGE_8hr-arrest_30min-PhIAA_RNA	2x150	STAR-2.5.3a	Candida	6,059,837	0.69	4,177,251	55,257	68,229	5,207	0.36
2024-09-13-MS240806L24_exp240514_MS498_SCGE_8hr-arrest_30min-PhIAA_RNA	2x150	STAR-2.5.3a	sacCer3	6,059,837	0.69	6,113,161	77,095	436,520	12,014	0.55
2024-09-13-MS240806L25_exp240521_MS857_SCD-Met_2hr-arrest_1hr-Rapamycin_RNA	2x150	STAR-2.5.3a	Candida	5,970,087	0.73	4,305	171	9,676	6	0.00
2024-09-13-MS240806L25_exp240521_MS857_SCD-Met_2hr-arrest_1hr-Rapamycin_RNA	2x150	STAR-2.5.3a	sacCer3	5,970,087	0.65	4,935,444	128,912	291,676	7,234	0.45
2024-09-13-MS240806L26_exp240521_MS857_SCD-Met_2hr-arrest_1hr-DMSO_RNA	2x150	STAR-2.5.3a	Candida	6,303,234	0.74	3,802	160	10,100	8	0.00
2024-09-13-MS240806L26_exp240521_MS857_SCD-Met_2hr-arrest_1hr-DMSO_RNA	2x150	STAR-2.5.3a	sacCer3	6,303,234	0.65	6,359,184	119,390	563,368	22,104	0.56
2024-09-13-MS240806L27_exp240521_MS857_SCD-Met_5hr-arrest_1hr-Rapamycin_RNA	2x150	STAR-2.5.3a	Candida	6,435,554	0.73	4,135	131	11,429	7	0.00
2024-09-13-MS240806L27_exp240521_MS857_SCD-Met_5hr-arrest_1hr-Rapamycin_RNA	2x150	STAR-2.5.3a	sacCer3	6,435,554	0.65	5,512,450	115,804	444,556	20,028	0.47
2024-09-13-MS240806L28_exp240521_MS857_SCD-Met_5hr-arrest_1hr-DMSO_RNA	2x150	STAR-2.5.3a	Candida	4,151,510	0.81	2,449	75	6,571	1	0.00
2024-09-13-MS240806L28_exp240521_MS857_SCD-Met_5hr-arrest_1hr-DMSO_RNA	2x150	STAR-2.5.3a	sacCer3	4,151,510	0.68	4,168,882	71,208	347,781	15,225	0.55
2024-09-13-MS240806L29_exp240521_MS857_SCD-Met_8hr-arrest_1hr-Rapamycin_RNA	2x150	STAR-2.5.3a	Candida	6,364,215	0.75	3,570	134	12,709	7	0.00
2024-09-13-MS240806L29_exp240521_MS857_SCD-Met_8hr-arrest_1hr-Rapamycin_RNA	2x150	STAR-2.5.3a	sacCer3	6,364,215	0.67	6,140,160	76,842	542,132	25,342	0.53
2024-09-13-MS240806L30_exp240521_MS857_SCD-Met_8hr-arrest_1hr-DMSO_RNA	2x150	STAR-2.5.3a	Candida	6,159,008	0.79	3,187	63	6,929	1	0.00
2024-09-13-MS240806L30_exp240521_MS857_SCD-Met_8hr-arrest_1hr-DMSO_RNA	2x150	STAR-2.5.3a	sacCer3	6,159,008	0.66	6,489,076	97,230	568,407	34,339	0.58
2024-09-13-MS240806L31_exp240521_MS857_SCD-Met_5hr-arrest_4hr-Rapamycin_RNA	2x150	STAR-2.5.3a	Candida	6,265,229	0.78	3,126	72	8,823	5	0.00
2024-09-13-MS240806L31_exp240521_MS857_SCD-Met_5hr-arrest_4hr-Rapamycin_RNA	2x150	STAR-2.5.3a	sacCer3	6,265,229	0.67	6,532,709	79,027	525,213	28,181	0.57

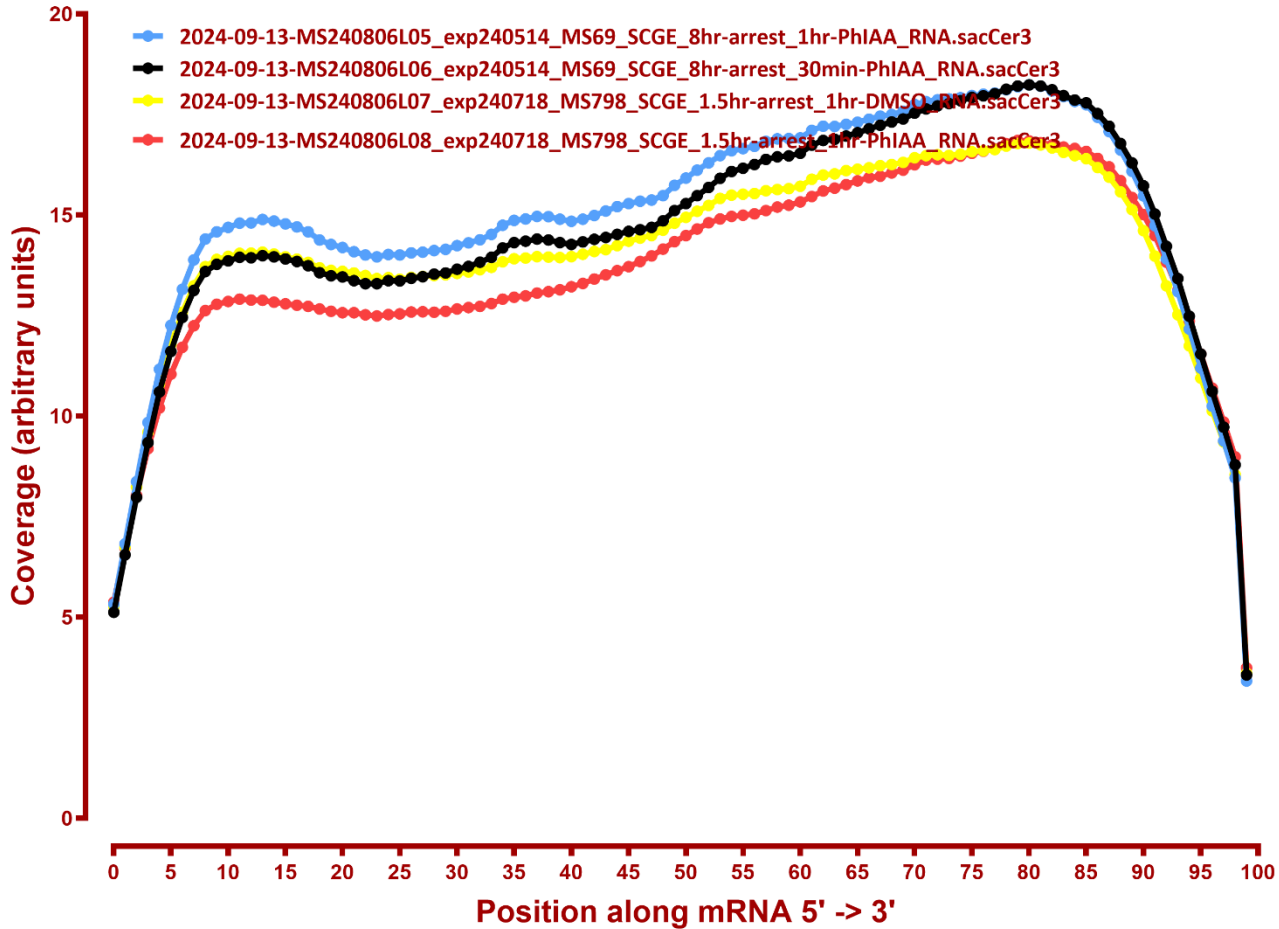
#	Exonic:	Intergenic:	Intronic:
2024-09-13-MS240806L01_exp240514_MS69_SCGE_1.5hr-arrest_1hr-DMSO_RNA.sacCer3	0.92	0.08	0.00
2024-09-13-MS240806L02_exp240514_MS69_SCGE_1.5hr-arrest_1hr-PhIAA_RNA.sacCer3	0.92	0.08	0.00
2024-09-13-MS240806L03_exp240514_MS69_SCGE_1.5hr-arrest_30min-PhIAA_RNA.sacCer3	0.92	0.08	0.00
2024-09-13-MS240806L04_exp240514_MS69_SCGE_8hr-arrest_1hr-DMSO_RNA.sacCer3	0.92	0.08	0.00
2024-09-13-MS240806L05_exp240514_MS69_SCGE_8hr-arrest_1hr-PhIAA_RNA.sacCer3	0.92	0.08	0.00
2024-09-13-MS240806L06_exp240514_MS69_SCGE_8hr-arrest_30min-PhIAA_RNA.sacCer3	0.92	0.08	0.00
2024-09-13-MS240806L07_exp240718_MS798_SCGE_1.5hr-arrest_1hr-DMSO_RNA.sacCer3	0.92	0.08	0.00
2024-09-13-MS240806L08_exp240718_MS798_SCGE_1.5hr-arrest_1hr-PhIAA_RNA.sacCer3	0.91	0.08	0.00
2024-09-13-MS240806L09_exp240718_MS798_SCGE_1.5hr-arrest_30min-PhIAA_RNA.sacCer3	0.91	0.08	0.00
2024-09-13-MS240806L10_exp240718_MS798_SCGE_8hr-arrest_1hr-DMSO_RNA.sacCer3	0.92	0.08	0.00
2024-09-13-MS240806L11_exp240718_MS798_SCGE_8hr-arrest_1hr-PhIAA_RNA.sacCer3	0.91	0.08	0.00
2024-09-13-MS240806L12_exp240718_MS798_SCGE_8hr-arrest_30min-PhIAA_RNA.sacCer3	0.91	0.08	0.00
2024-09-13-MS240806L13_exp240718_MS798_SCGE_1.5hr-arrest_1hr-DMSO_RNA.sacCer3	0.92	0.07	0.00
2024-09-13-MS240806L14_exp240718_MS798_SCGE_1.5hr-arrest_1hr-PhIAA_RNA.sacCer3	0.91	0.09	0.00
2024-09-13-MS240806L15_exp240718_MS798_SCGE_1.5hr-arrest_30min-PhIAA_RNA.sacCer3	0.91	0.09	0.00
2024-09-13-MS240806L16_exp240718_MS798_SCGE_8hr-arrest_1hr-DMSO_RNA.sacCer3	0.92	0.08	0.00
2024-09-13-MS240806L17_exp240718_MS798_SCGE_8hr-arrest_1hr-PhIAA_RNA.sacCer3	0.91	0.08	0.00
2024-09-13-MS240806L18_exp240718_MS798_SCGE_8hr-arrest_30min-PhIAA_RNA.sacCer3	0.92	0.08	0.00
2024-09-13-MS240806L19_exp240514_MS498_SCGE_1.5hr-arrest_1hr-DMSO_RNA.sacCer3	0.92	0.07	0.00
2024-09-13-MS240806L20_exp240514_MS498_SCGE_1.5hr-arrest_1hr-PhIAA_RNA.sacCer3	0.93	0.07	0.00
2024-09-13-MS240806L21_exp240514_MS498_SCGE_1.5hr-arrest_30min-PhIAA_RNA.sacCer3	0.93	0.07	0.00
2024-09-13-MS240806L22_exp240514_MS498_SCGE_8hr-arrest_1hr-DMSO_RNA.sacCer3	0.92	0.07	0.00
2024-09-13-MS240806L23_exp240514_MS498_SCGE_8hr-arrest_1hr-PhIAA_RNA.sacCer3	0.93	0.07	0.00
2024-09-13-MS240806L24_exp240514_MS498_SCGE_8hr-arrest_30min-PhIAA_RNA.sacCer3	0.93	0.07	0.00
2024-09-13-MS240806L25_exp240521_MS857_SCD-Met_2hr-arrest_1hr-Rapamycin_RNA.sacCer3	0.94	0.06	0.00
2024-09-13-MS240806L26_exp240521_MS857_SCD-Met_2hr-arrest_1hr-DMSO_RNA.sacCer3	0.93	0.07	0.00
2024-09-13-MS240806L27_exp240521_MS857_SCD-Met_5hr-arrest_1hr-Rapamycin_RNA.sacCer3	0.93	0.07	0.00
2024-09-13-MS240806L28_exp240521_MS857_SCD-Met_5hr-arrest_1hr-DMSO_RNA.sacCer3	0.93	0.07	0.00
2024-09-13-MS240806L29_exp240521_MS857_SCD-Met_8hr-arrest_1hr-Rapamycin_RNA.sacCer3	0.92	0.08	0.00
2024-09-13-MS240806L30_exp240521_MS857_SCD-Met_8hr-arrest_1hr-DMSO_RNA.sacCer3	0.92	0.08	0.00
2024-09-13-MS240806L31_exp240521_MS857_SCD-Met_5hr-arrest_4hr-Rapamycin_RNA.sacCer3	0.92	0.08	0.00

# COVERAGE ALL READS

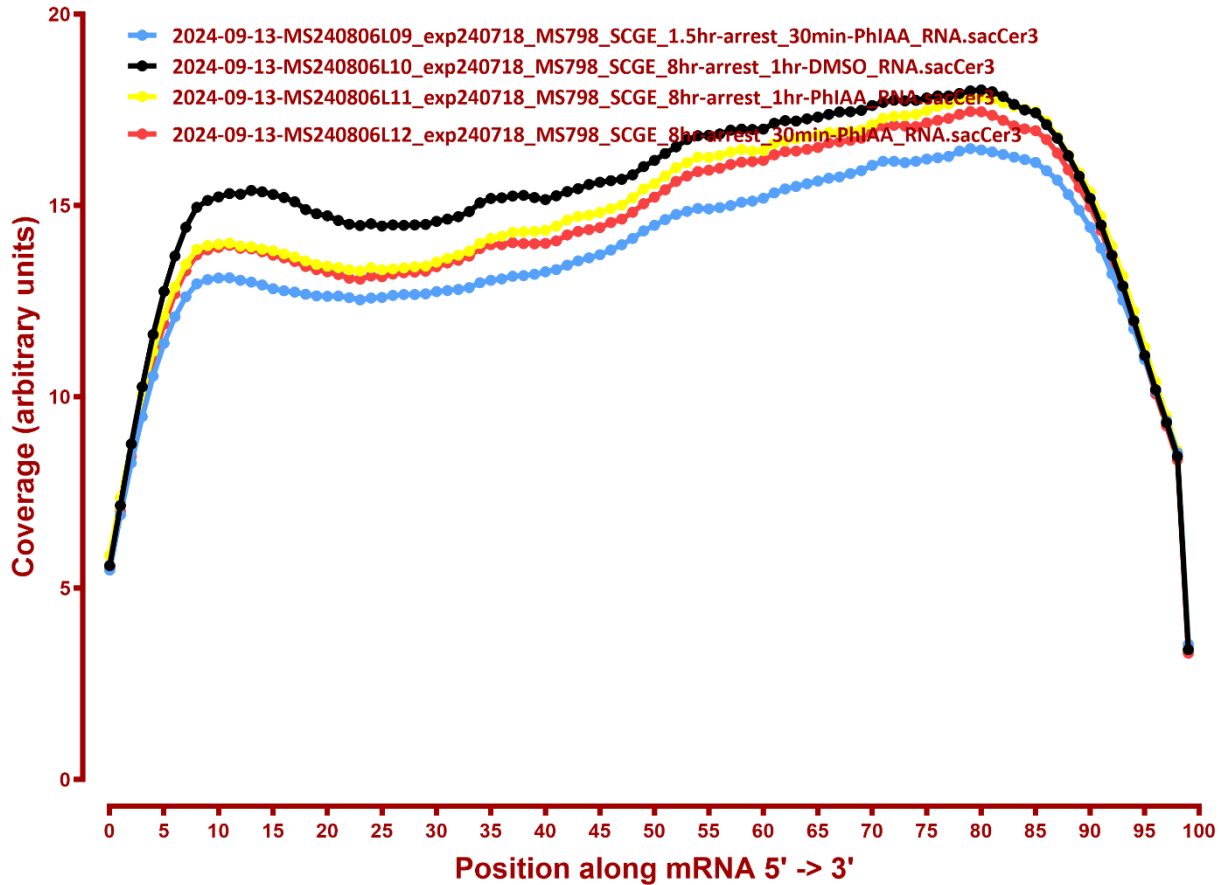
## Coverage of genes; >1000bp, sacCer3



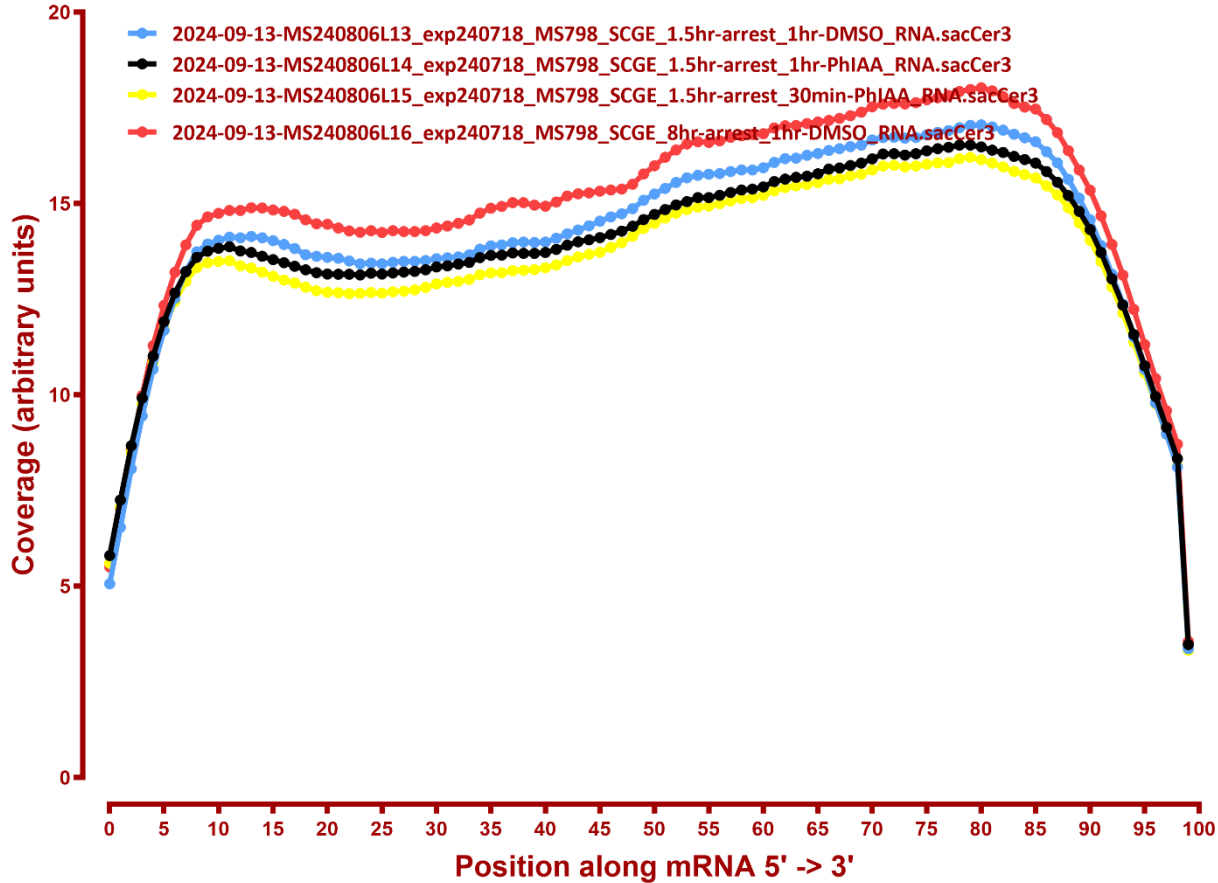
## Coverage of genes; >1000bp, sacCer3



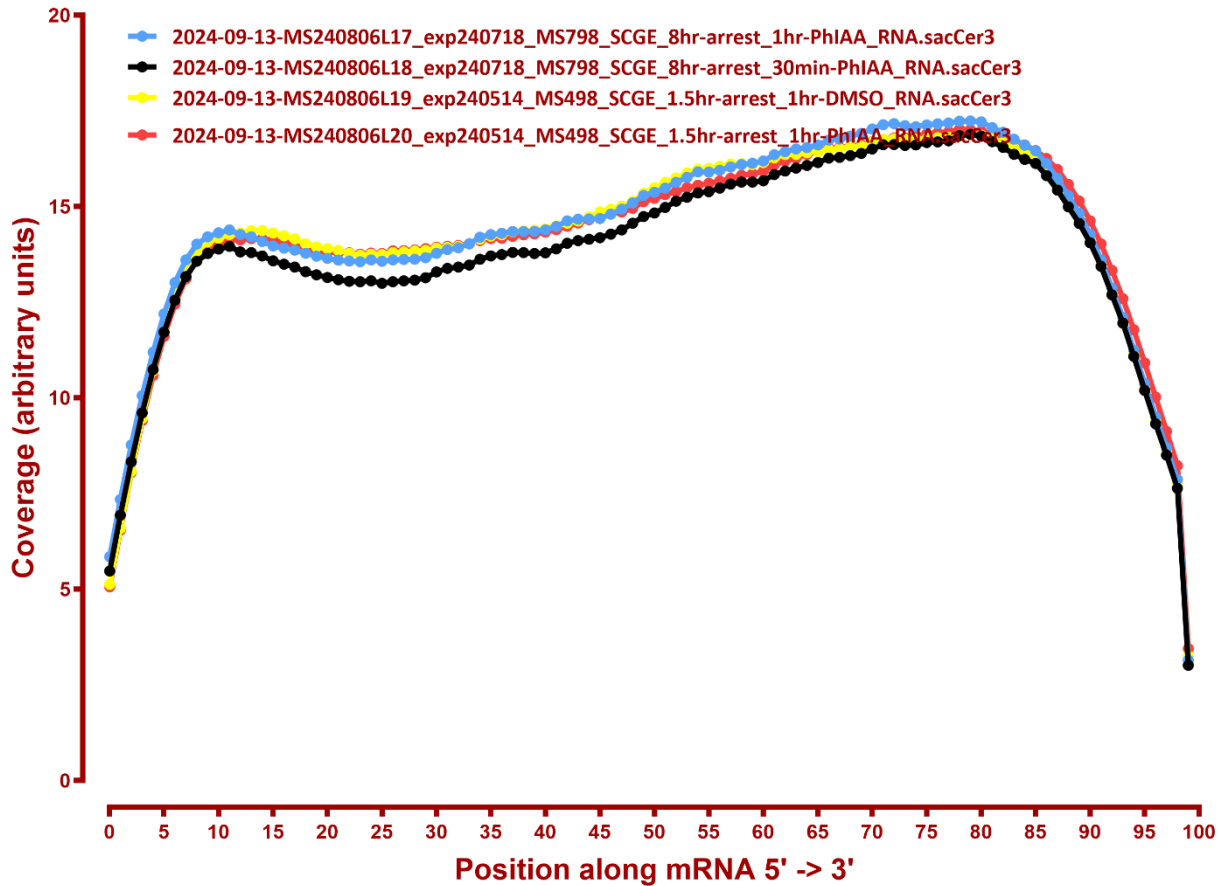
## Coverage of genes; >1000bp, sacCer3



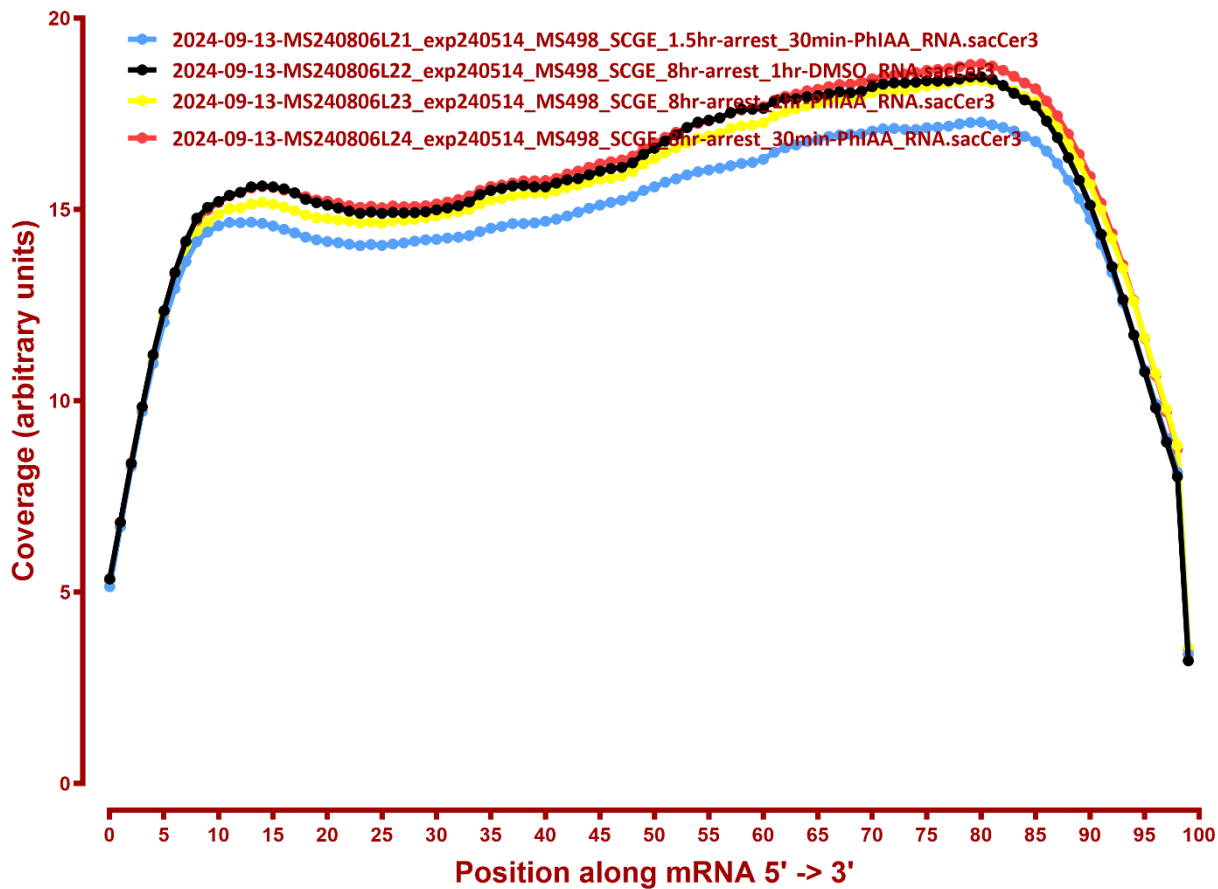
## Coverage of genes; >1000bp, sacCer3



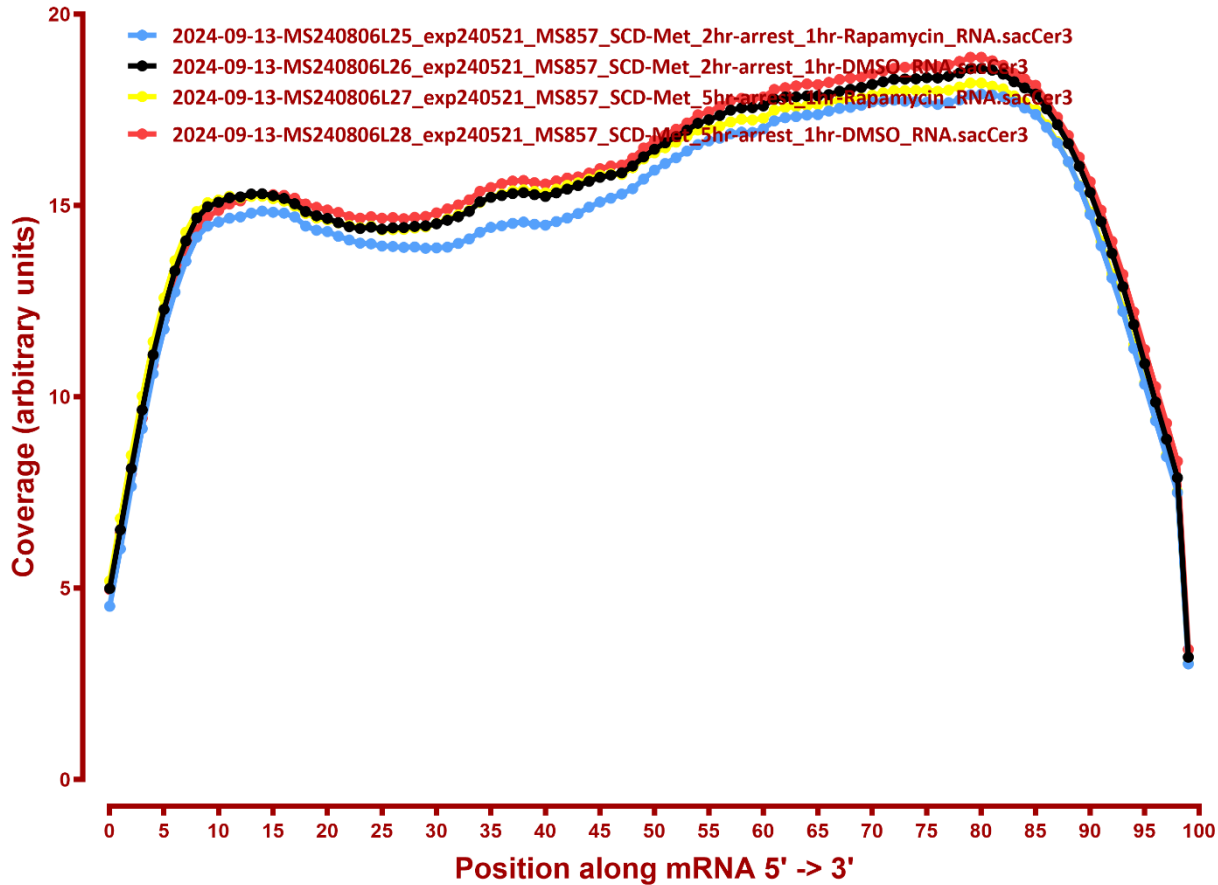
## Coverage of genes; >1000bp, sacCer3



## Coverage of genes; >1000bp, sacCer3



## Coverage of genes; >1000bp, sacCer3



## Coverage of genes; >1000bp, sacCer3

