

# MAPPING STATS

Library	Read Length	Mapping	Species	Raw fragments	Complexity	Unique	Unique Splices	Multi	Multi Splices	Fraction mapped
2024-07-09-exp240502_MS412_SCD-Met_2hr-arrest_1hr-DMSO_polyA-RNA-MS240604L14	2x150	STAR-2.5.3a	Candida	6,757,140	0.59	8,601,653	137,089	122,829	12,615	0.66
2024-07-09-exp240502_MS412_SCD-Met_2hr-arrest_1hr-DMSO_polyA-RNA-MS240604L14	2x150	STAR-2.5.3a	sacCer3	6,757,140	0.66	3,201,013	78,319	237,170	3,972	0.26
2024-07-09-exp240502_MS412_SCD-Met_2hr-arrest_1hr-Rapamycin_polyA-RNA-MS240604L13	2x150	STAR-2.5.3a	Candida	7,124,399	0.57	10,116,203	160,291	161,147	18,121	0.73
2024-07-09-exp240502_MS412_SCD-Met_2hr-arrest_1hr-Rapamycin_polyA-RNA-MS240604L13	2x150	STAR-2.5.3a	sacCer3	7,124,399	0.68	2,424,700	65,838	209,117	3,709	0.19
2024-07-09-exp240502_MS412_SCD-Met_5hr-arrest_1hr-DMSO_polyA-RNA-MS240604L16	2x150	STAR-2.5.3a	Candida	7,607,803	0.60	7,599,552	120,838	109,713	10,481	0.52
2024-07-09-exp240502_MS412_SCD-Met_5hr-arrest_1hr-DMSO_polyA-RNA-MS240604L16	2x150	STAR-2.5.3a	sacCer3	7,607,803	0.63	5,549,561	103,945	488,359	16,521	0.40
2024-07-09-exp240502_MS412_SCD-Met_5hr-arrest_1hr-Rapamycin_polyA-RNA-MS240604L15	2x150	STAR-2.5.3a	Candida	7,582,558	0.59	8,812,205	140,877	150,864	14,566	0.60
2024-07-09-exp240502_MS412_SCD-Met_5hr-arrest_1hr-Rapamycin_polyA-RNA-MS240604L15	2x150	STAR-2.5.3a	sacCer3	7,582,558	0.64	4,311,294	93,270	418,858	16,468	0.32
2024-07-09-exp240502_MS412_SCD-Met_5hr-arrest_4hr-Rapamycin_polyA-RNA-MS240604L19	2x150	STAR-2.5.3a	Candida	7,100,727	0.59	8,421,548	135,594	135,820	12,482	0.61
2024-07-09-exp240502_MS412_SCD-Met_5hr-arrest_4hr-Rapamycin_polyA-RNA-MS240604L19	2x150	STAR-2.5.3a	sacCer3	7,100,727	0.65	3,852,731	79,179	343,491	11,953	0.30
2024-07-09-exp240502_MS412_SCD-Met_8hr-arrest_1hr-DMSO_polyA-RNA-MS240604L18	2x150	STAR-2.5.3a	Candida	6,583,375	0.60	7,246,682	119,918	119,930	10,292	0.57
2024-07-09-exp240502_MS412_SCD-Met_8hr-arrest_1hr-DMSO_polyA-RNA-MS240604L18	2x150	STAR-2.5.3a	sacCer3	6,583,375	0.66	4,132,130	55,582	354,962	15,874	0.35
2024-07-09-exp240502_MS412_SCD-Met_8hr-arrest_1hr-Rapamycin_polyA-RNA-MS240604L17	2x150	STAR-2.5.3a	Candida	7,907,610	0.59	9,318,906	148,348	147,333	14,907	0.61
2024-07-09-exp240502_MS412_SCD-Met_8hr-arrest_1hr-Rapamycin_polyA-RNA-MS240604L17	2x150	STAR-2.5.3a	sacCer3	7,907,610	0.65	4,471,420	57,368	400,271	22,681	0.31
2024-07-09-exp240502_MS412_SCD-Met_8hr-arrest_7hr-Rapamycin_polyA-RNA-MS240604L20	2x150	STAR-2.5.3a	Candida	7,158,693	0.58	8,715,677	142,787	138,042	13,134	0.63
2024-07-09-exp240502_MS412_SCD-Met_8hr-arrest_7hr-Rapamycin_polyA-RNA-MS240604L20	2x150	STAR-2.5.3a	sacCer3	7,158,693	0.65	3,718,477	47,891	331,325	23,447	0.29
2024-07-09-exp240514_MS497_SCGE_1.5hr-arrest_30min-PhIAA_polyA-RNA-MS240604L03	2x150	STAR-2.5.3a	Candida	6,241,036	0.64	3,810,715	58,655	59,602	5,014	0.32
2024-07-09-exp240514_MS497_SCGE_1.5hr-arrest_30min-PhIAA_polyA-RNA-MS240604L03	2x150	STAR-2.5.3a	sacCer3	6,241,036	0.64	6,826,413	120,683	361,578	8,284	0.59
2024-07-09-exp240514_MS497_SCGE_1.5hr-arrest_60min-DMSO_polyA-RNA-MS240604L01	2x150	STAR-2.5.3a	Candida	7,492,779	0.62	5,178,047	81,381	83,742	6,404	0.36
2024-07-09-exp240514_MS497_SCGE_1.5hr-arrest_60min-DMSO_polyA-RNA-MS240604L01	2x150	STAR-2.5.3a	sacCer3	7,492,779	0.59	7,649,354	178,262	118,129	12,331	0.55
2024-07-09-exp240514_MS497_SCGE_1.5hr-arrest_60min-PhIAA_polyA-RNA-MS240604L02	2x150	STAR-2.5.3a	Candida	7,726,583	0.62	4,688,344	75,628	81,586	6,008	0.31
2024-07-09-exp240514_MS497_SCGE_1.5hr-arrest_60min-PhIAA_polyA-RNA-MS240604L02	2x150	STAR-2.5.3a	sacCer3	7,726,583	0.62	8,444,888	158,536	428,850	10,798	0.59
2024-07-09-exp240514_MS497_SCGE_8hr-arrest_30min-PhIAA_polyA-RNA-MS240604L06	2x150	STAR-2.5.3a	Candida	7,942,981	0.60	5,588,892	91,576	100,785	7,835	0.36
2024-07-09-exp240514_MS497_SCGE_8hr-arrest_30min-PhIAA_polyA-RNA-MS240604L06	2x150	STAR-2.5.3a	sacCer3	7,942,981	0.61	7,871,557	131,947	615,898	17,474	0.54
2024-07-09-exp240514_MS497_SCGE_8hr-arrest_60min-DMSO_polyA-RNA-MS240604L04	2x150	STAR-2.5.3a	Candida	8,215,210	0.60	6,397,424	102,510	107,088	8,506	0.40
2024-07-09-exp240514_MS497_SCGE_8hr-arrest_60min-DMSO_polyA-RNA-MS240604L04	2x150	STAR-2.5.3a	sacCer3	8,215,210	0.59	7,539,954	140,328	571,341	18,295	0.50
2024-07-09-exp240514_MS497_SCGE_8hr-arrest_60min-PhIAA_polyA-RNA-MS240604L05	2x150	STAR-2.5.3a	Candida	6,221,358	0.63	4,543,890	73,538	76,007	5,805	0.38
2024-07-09-exp240514_MS497_SCGE_8hr-arrest_60min-PhIAA_polyA-RNA-MS240604L05	2x150	STAR-2.5.3a	sacCer3	6,221,358	0.65	5,974,719	84,481	437,734	11,478	0.52
2024-07-09-exp240517_MS798_SCGE_1.5hr-arrest_30min-PhIAA_polyA-RNA-MS240604L09	2x150	STAR-2.5.3a	Candida	8,538,206	0.58	7,487,471	109,881	108,580	9,190	0.45
2024-07-09-exp240517_MS798_SCGE_1.5hr-arrest_30min-PhIAA_polyA-RNA-MS240604L09	2x150	STAR-2.5.3a	sacCer3	8,538,206	0.60	7,719,235	174,155	431,103	14,669	0.49
2024-07-09-exp240517_MS798_SCGE_1.5hr-arrest_60min-DMSO_polyA-RNA-MS240604L07	2x150	STAR-2.5.3a	Candida	6,967,064	0.63	4,711,805	73,783	75,348	6,238	0.35
2024-07-09-exp240517_MS798_SCGE_1.5hr-arrest_60min-DMSO_polyA-RNA-MS240604L07	2x150	STAR-2.5.3a	sacCer3	6,967,064	0.61	7,073,784	164,860	393,971	13,551	0.55

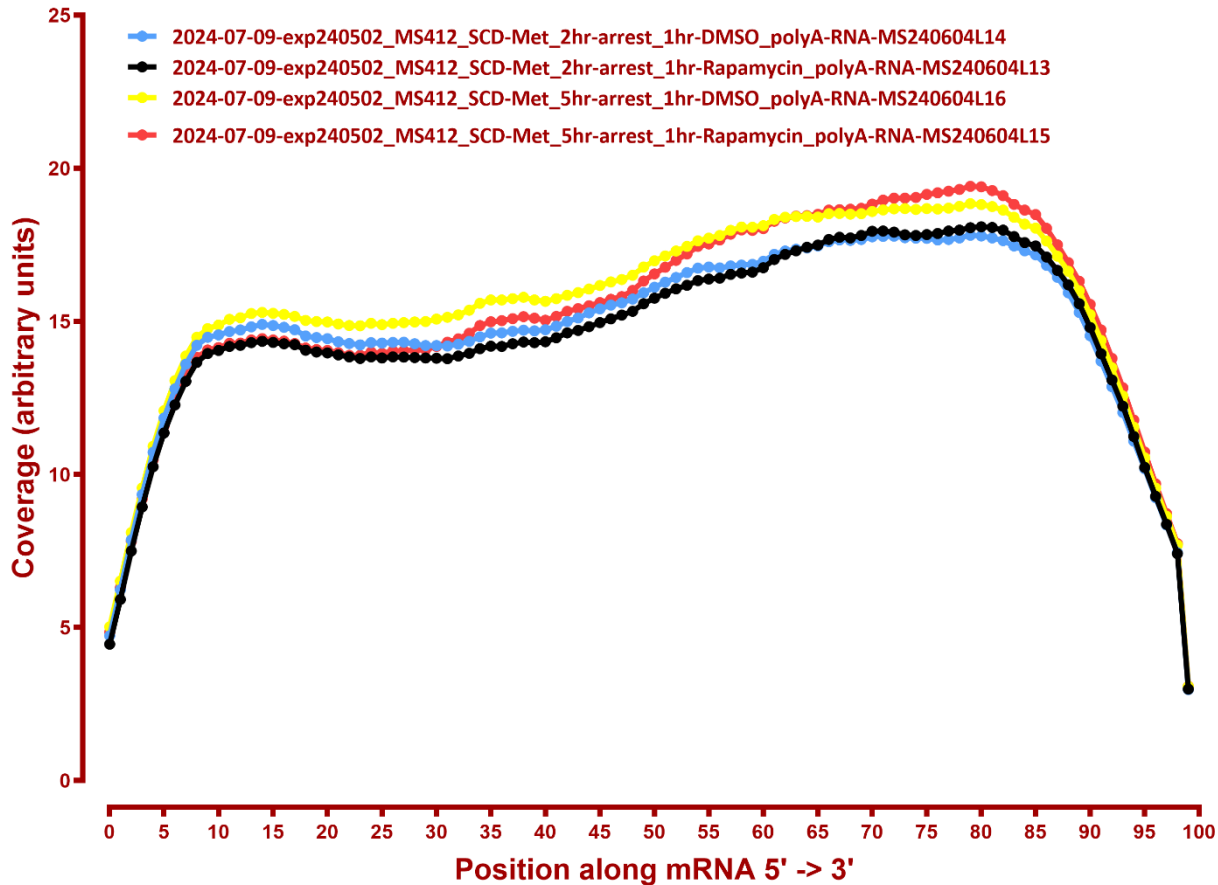
# MAPPING STATS

2024-07-09-exp240517_MS798_SCGE_1.5hr-arrest_60min-PhIAA_polyA-RNA-MS240604L08	2x150	STAR-2.5.3a	Candida	7,287,897	0.60	6,791,876	105,152	107,557	8,785	0.48
2024-07-09-exp240517_MS798_SCGE_1.5hr-arrest_60min-PhIAA_polyA-RNA-MS240604L08	2x150	STAR-2.5.3a	sacCer3	7,287,897	0.65	5,726,712	110,680	324,075	9,877	0.42
2024-07-09-exp240517_MS798_SCGE_8hr-arrest_30min-PhIAA_polyA-RNA-MS240604L12	2x150	STAR-2.5.3a	Candida	7,684,233	0.58	8,839,638	143,580	143,117	12,681	0.59
2024-07-09-exp240517_MS798_SCGE_8hr-arrest_30min-PhIAA_polyA-RNA-MS240604L12	2x150	STAR-2.5.3a	sacCer3	7,684,233	0.64	4,174,974	108,134	435,470	11,850	0.31
2024-07-09-exp240517_MS798_SCGE_8hr-arrest_60min-DMSO_polyA-RNA-MS240604L10	2x150	STAR-2.5.3a	Candida	6,317,479	0.62	5,446,024	86,454	87,759	7,319	0.45
2024-07-09-exp240517_MS798_SCGE_8hr-arrest_60min-DMSO_polyA-RNA-MS240604L10	2x150	STAR-2.5.3a	sacCer3	6,317,479	0.62	5,326,467	101,077	396,126	12,212	0.46
2024-07-09-exp240517_MS798_SCGE_8hr-arrest_60min-PhIAA_polyA-RNA-MS240604L11	2x150	STAR-2.5.3a	Candida	7,532,724	0.57	9,356,324	147,834	150,688	15,358	0.64
2024-07-09-exp240517_MS798_SCGE_8hr-arrest_60min-PhIAA_polyA-RNA-MS240604L11	2x150	STAR-2.5.3a	sacCer3	7,532,724	0.67	3,558,598	78,600	310,393	8,155	0.26
2024-07-09-exp240607_MS799_SCGE_1.5hr-arrest_30min-PhIAA_polyA-RNA-MS240620L03	2x150	STAR-2.5.3a	Candida	8,570,892	0.60	6,604,587	98,389	103,469	7,173	0.40
2024-07-09-exp240607_MS799_SCGE_1.5hr-arrest_30min-PhIAA_polyA-RNA-MS240620L03	2x150	STAR-2.5.3a	sacCer3	8,570,892	0.61	8,238,581	196,275	512,530	12,364	0.52
2024-07-09-exp240607_MS799_SCGE_1.5hr-arrest_60min-DMSO_polyA-RNA-MS240620L01	2x150	STAR-2.5.3a	Candida	6,955,114	0.63	4,610,691	70,213	64,119	4,791	0.34
2024-07-09-exp240607_MS799_SCGE_1.5hr-arrest_60min-DMSO_polyA-RNA-MS240620L01	2x150	STAR-2.5.3a	sacCer3	6,955,114	0.60	7,502,788	165,970	415,490	11,106	0.58
2024-07-09-exp240607_MS799_SCGE_1.5hr-arrest_60min-PhIAA_polyA-RNA-MS240620L02	2x150	STAR-2.5.3a	Candida	6,611,893	0.63	5,423,272	83,306	79,321	6,111	0.42
2024-07-09-exp240607_MS799_SCGE_1.5hr-arrest_60min-PhIAA_polyA-RNA-MS240620L02	2x150	STAR-2.5.3a	sacCer3	6,611,893	0.65	6,039,856	140,436	331,203	8,839	0.49
2024-07-09-exp240607_MS799_SCGE_8hr-arrest_30min-PhIAA_polyA-RNA-MS240620L06	2x150	STAR-2.5.3a	Candida	8,467,012	0.56	8,746,064	129,294	115,069	11,305	0.53
2024-07-09-exp240607_MS799_SCGE_8hr-arrest_30min-PhIAA_polyA-RNA-MS240620L06	2x150	STAR-2.5.3a	sacCer3	8,467,012	0.59	6,474,318	131,258	543,110	17,366	0.42
2024-07-09-exp240607_MS799_SCGE_8hr-arrest_60min-DMSO_polyA-RNA-MS240620L04	2x150	STAR-2.5.3a	Candida	8,103,066	0.59	6,691,368	97,256	100,238	8,202	0.43
2024-07-09-exp240607_MS799_SCGE_8hr-arrest_60min-DMSO_polyA-RNA-MS240620L04	2x150	STAR-2.5.3a	sacCer3	8,103,066	0.58	7,755,964	129,306	622,322	19,974	0.53
2024-07-09-exp240607_MS799_SCGE_8hr-arrest_60min-PhIAA_polyA-RNA-MS240620L05	2x150	STAR-2.5.3a	Candida	7,325,493	0.59	7,804,659	112,553	112,173	10,271	0.55
2024-07-09-exp240607_MS799_SCGE_8hr-arrest_60min-PhIAA_polyA-RNA-MS240620L05	2x150	STAR-2.5.3a	sacCer3	7,325,493	0.63	5,270,300	85,484	409,164	12,110	0.39
2024-07-09-exp240607_MS800_SCGE_1.5hr-arrest_30min-PhIAA_polyA-RNA-MS240620L09	2x150	STAR-2.5.3a	Candida	7,823,215	0.61	4,763,062	68,370	69,241	5,133	0.31
2024-07-09-exp240607_MS800_SCGE_1.5hr-arrest_30min-PhIAA_polyA-RNA-MS240620L09	2x150	STAR-2.5.3a	sacCer3	7,823,215	0.57	9,043,711	190,809	526,563	14,615	0.62
2024-07-09-exp240607_MS800_SCGE_1.5hr-arrest_60min-DMSO_polyA-RNA-MS240620L07	2x150	STAR-2.5.3a	Candida	7,170,260	0.62	4,836,375	68,595	64,123	5,393	0.35
2024-07-09-exp240607_MS800_SCGE_1.5hr-arrest_60min-DMSO_polyA-RNA-MS240620L07	2x150	STAR-2.5.3a	sacCer3	7,170,260	0.59	7,976,567	170,209	417,235	11,263	0.60
2024-07-09-exp240607_MS800_SCGE_1.5hr-arrest_60min-PhIAA_polyA-RNA-MS240620L08	2x150	STAR-2.5.3a	Candida	7,105,020	0.62	4,326,501	61,317	57,852	4,834	0.31
2024-07-09-exp240607_MS800_SCGE_1.5hr-arrest_60min-PhIAA_polyA-RNA-MS240620L08	2x150	STAR-2.5.3a	sacCer3	7,105,020	0.56	8,274,128	160,574	509,732	13,568	0.63
2024-07-09-exp240607_MS800_SCGE_8hr-arrest_30min-PhIAA_polyA-RNA-MS240620L12	2x150	STAR-2.5.3a	Candida	7,369,752	0.62	4,670,974	70,780	80,724	7,188	0.33
2024-07-09-exp240607_MS800_SCGE_8hr-arrest_30min-PhIAA_polyA-RNA-MS240620L12	2x150	STAR-2.5.3a	sacCer3	7,369,752	0.57	8,153,302	145,706	703,938	26,248	0.61
2024-07-09-exp240607_MS800_SCGE_8hr-arrest_60min-DMSO_polyA-RNA-MS240620L10	2x150	STAR-2.5.3a	Candida	6,733,968	0.62	4,939,649	72,341	74,714	5,676	0.38
2024-07-09-exp240607_MS800_SCGE_8hr-arrest_60min-DMSO_polyA-RNA-MS240620L10	2x150	STAR-2.5.3a	sacCer3	6,733,968	0.59	6,799,958	116,990	505,922	17,012	0.55
2024-07-09-exp240607_MS800_SCGE_8hr-arrest_60min-PhIAA_polyA-RNA-MS240620L11	2x150	STAR-2.5.3a	Candida	7,804,110	0.61	4,979,258	70,806	78,555	7,285	0.33
2024-07-09-exp240607_MS800_SCGE_8hr-arrest_60min-PhIAA_polyA-RNA-MS240620L11	2x150	STAR-2.5.3a	sacCer3	7,804,110	0.55	8,695,633	139,883	747,290	27,628	0.62

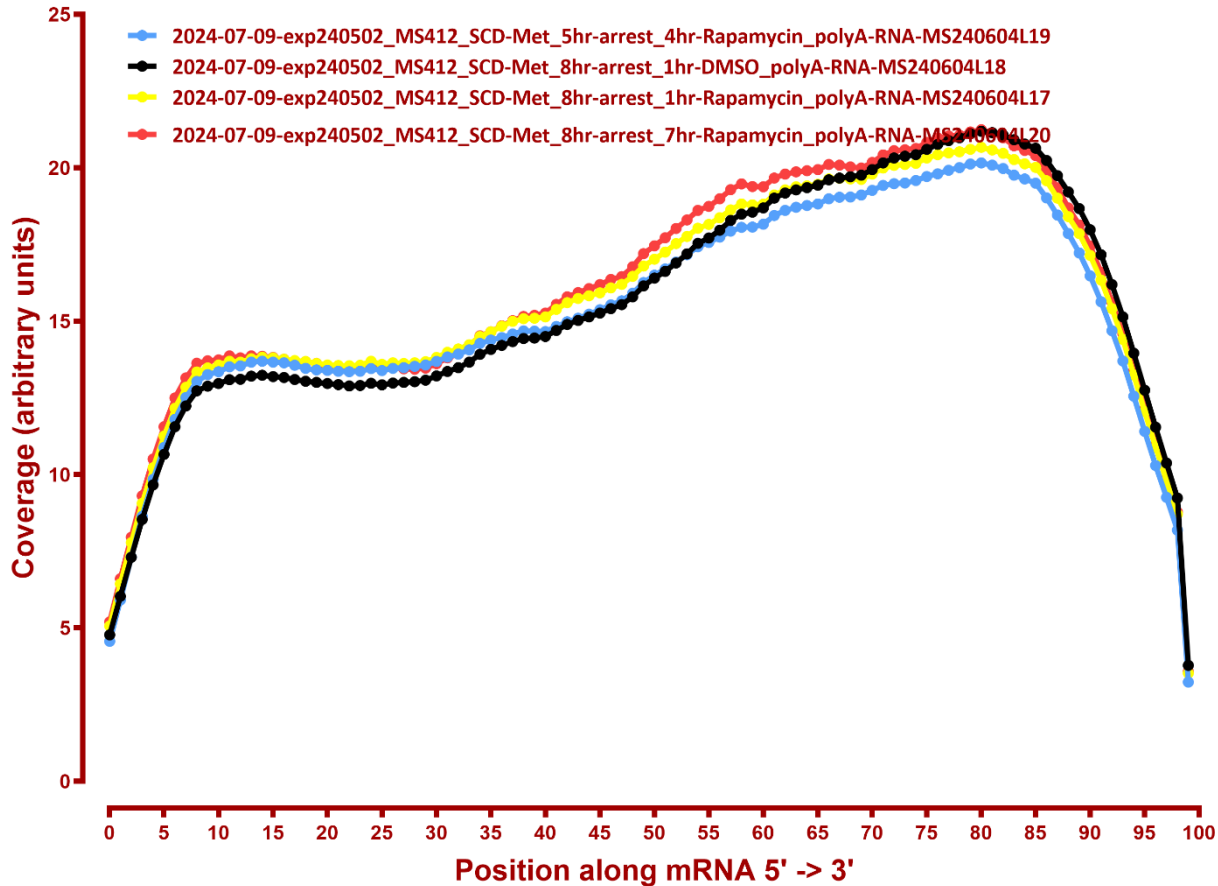
#	Exonic:	Intergenic:	Intronic:
2024-07-09-exp240502_MS412_SCD-Met_2hr-arrest_1hr-DMSO_polyA-RNA-MS240604L14	0.93	0.06	0.00
2024-07-09-exp240502_MS412_SCD-Met_2hr-arrest_1hr-Rapamycin_polyA-RNA-MS240604L13	0.94	0.06	0.00
2024-07-09-exp240502_MS412_SCD-Met_5hr-arrest_1hr-DMSO_polyA-RNA-MS240604L16	0.93	0.07	0.00
2024-07-09-exp240502_MS412_SCD-Met_5hr-arrest_1hr-Rapamycin_polyA-RNA-MS240604L15	0.93	0.07	0.00
2024-07-09-exp240502_MS412_SCD-Met_5hr-arrest_4hr-Rapamycin_polyA-RNA-MS240604L19	0.93	0.07	0.00
2024-07-09-exp240502_MS412_SCD-Met_8hr-arrest_1hr-DMSO_polyA-RNA-MS240604L18	0.92	0.08	0.00
2024-07-09-exp240502_MS412_SCD-Met_8hr-arrest_1hr-Rapamycin_polyA-RNA-MS240604L17	0.92	0.08	0.00
2024-07-09-exp240502_MS412_SCD-Met_8hr-arrest_7hr-Rapamycin_polyA-RNA-MS240604L20	0.92	0.08	0.00
2024-07-09-exp240514_MS497_SCGE_1.5hr-arrest_30min-PhIAA_polyA-RNA-MS240604L03	0.91	0.09	0.00
2024-07-09-exp240514_MS497_SCGE_1.5hr-arrest_60min-DMSO_polyA-RNA-MS240604L01	0.92	0.08	0.00
2024-07-09-exp240514_MS497_SCGE_1.5hr-arrest_60min-PhIAA_polyA-RNA-MS240604L02	0.90	0.09	0.00
2024-07-09-exp240514_MS497_SCGE_8hr-arrest_30min-PhIAA_polyA-RNA-MS240604L06	0.91	0.09	0.00
2024-07-09-exp240514_MS497_SCGE_8hr-arrest_60min-DMSO_polyA-RNA-MS240604L04	0.92	0.08	0.00
2024-07-09-exp240514_MS497_SCGE_8hr-arrest_60min-PhIAA_polyA-RNA-MS240604L05	0.90	0.10	0.00
2024-07-09-exp240517_MS798_SCGE_1.5hr-arrest_30min-PhIAA_polyA-RNA-MS240604L09	0.91	0.08	0.00
2024-07-09-exp240517_MS798_SCGE_1.5hr-arrest_60min-DMSO_polyA-RNA-MS240604L07	0.92	0.07	0.00
2024-07-09-exp240517_MS798_SCGE_1.5hr-arrest_60min-PhIAA_polyA-RNA-MS240604L08	0.91	0.09	0.00
2024-07-09-exp240517_MS798_SCGE_8hr-arrest_30min-PhIAA_polyA-RNA-MS240604L12	0.91	0.08	0.00
2024-07-09-exp240517_MS798_SCGE_8hr-arrest_60min-DMSO_polyA-RNA-MS240604L10	0.92	0.08	0.00
2024-07-09-exp240517_MS798_SCGE_8hr-arrest_60min-PhIAA_polyA-RNA-MS240604L11	0.91	0.08	0.00
2024-07-09-exp240607_MS799_SCGE_1.5hr-arrest_30min-PhIAA_polyA-RNA-MS240620L03	0.92	0.08	0.00
2024-07-09-exp240607_MS799_SCGE_1.5hr-arrest_60min-DMSO_polyA-RNA-MS240620L01	0.92	0.07	0.00
2024-07-09-exp240607_MS799_SCGE_1.5hr-arrest_60min-PhIAA_polyA-RNA-MS240620L02	0.92	0.08	0.00
2024-07-09-exp240607_MS799_SCGE_8hr-arrest_30min-PhIAA_polyA-RNA-MS240620L06	0.92	0.08	0.00
2024-07-09-exp240607_MS799_SCGE_8hr-arrest_60min-DMSO_polyA-RNA-MS240620L04	0.92	0.08	0.00
2024-07-09-exp240607_MS799_SCGE_8hr-arrest_60min-PhIAA_polyA-RNA-MS240620L05	0.92	0.08	0.00
2024-07-09-exp240607_MS800_SCGE_1.5hr-arrest_30min-PhIAA_polyA-RNA-MS240620L09	0.93	0.07	0.00
2024-07-09-exp240607_MS800_SCGE_1.5hr-arrest_60min-DMSO_polyA-RNA-MS240620L07	0.93	0.07	0.00
2024-07-09-exp240607_MS800_SCGE_1.5hr-arrest_60min-PhIAA_polyA-RNA-MS240620L08	0.93	0.07	0.00
2024-07-09-exp240607_MS800_SCGE_8hr-arrest_30min-PhIAA_polyA-RNA-MS240620L12	0.93	0.07	0.00
2024-07-09-exp240607_MS800_SCGE_8hr-arrest_60min-DMSO_polyA-RNA-MS240620L10	0.92	0.08	0.00
2024-07-09-exp240607_MS800_SCGE_8hr-arrest_60min-PhIAA_polyA-RNA-MS240620L11	0.93	0.06	0.00

# COVERAGE ALL READS

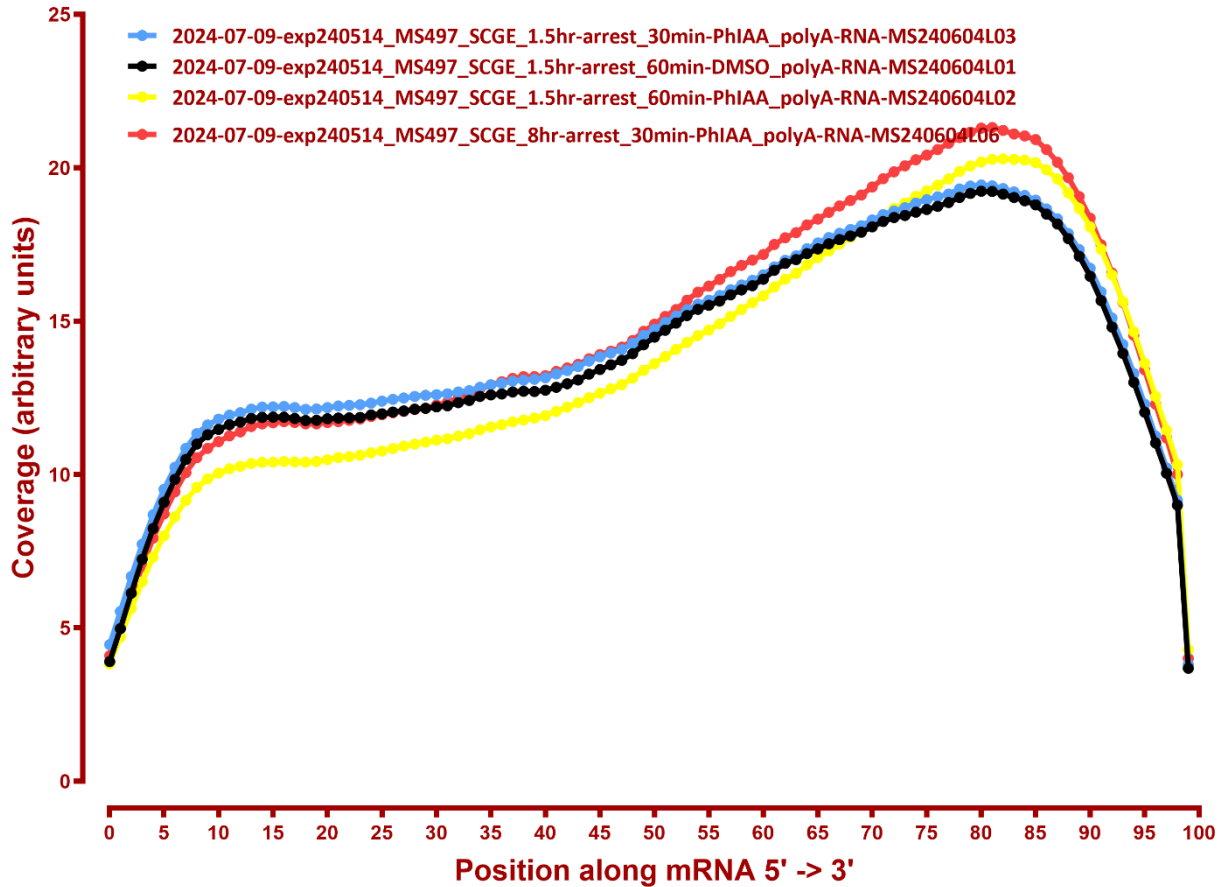
## Coverage of genes; >1000bp, sacCer3



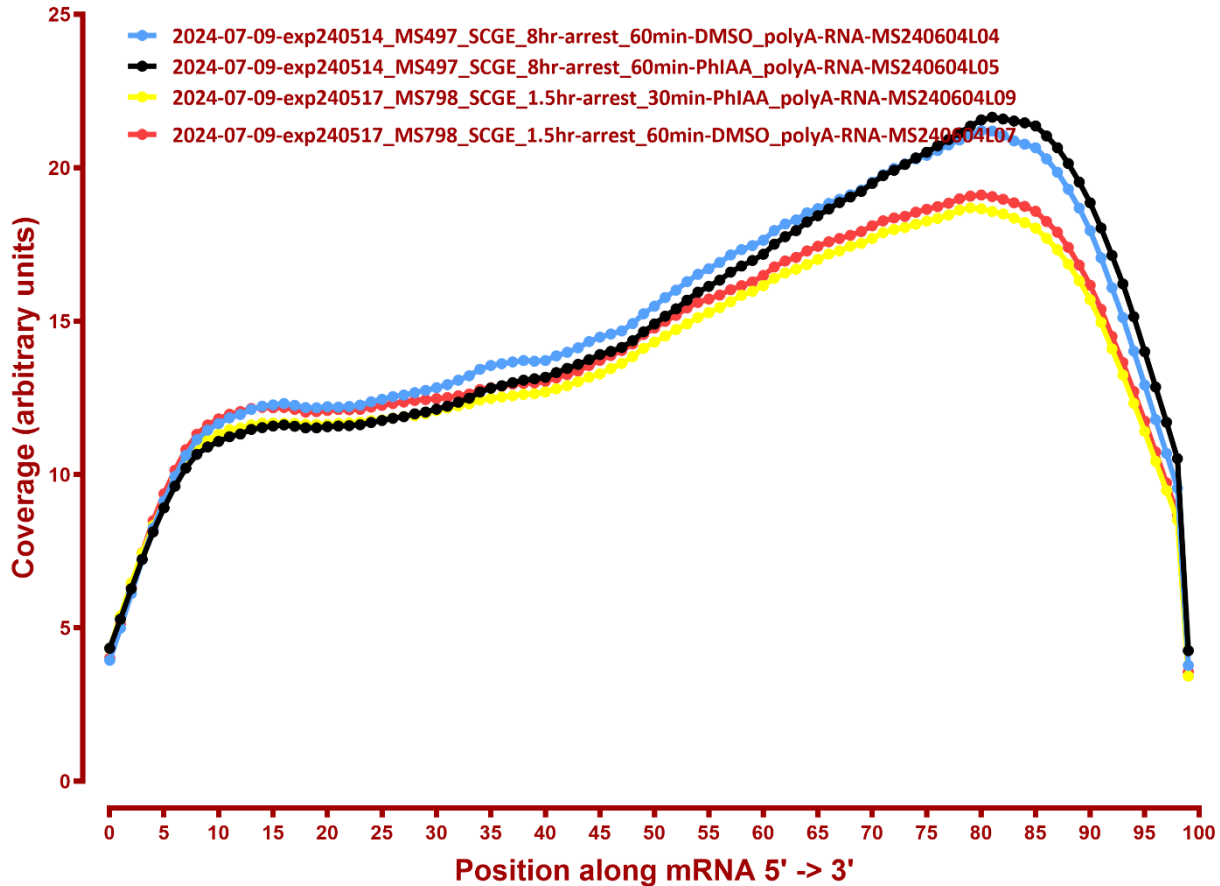
## Coverage of genes; >1000bp, sacCer3



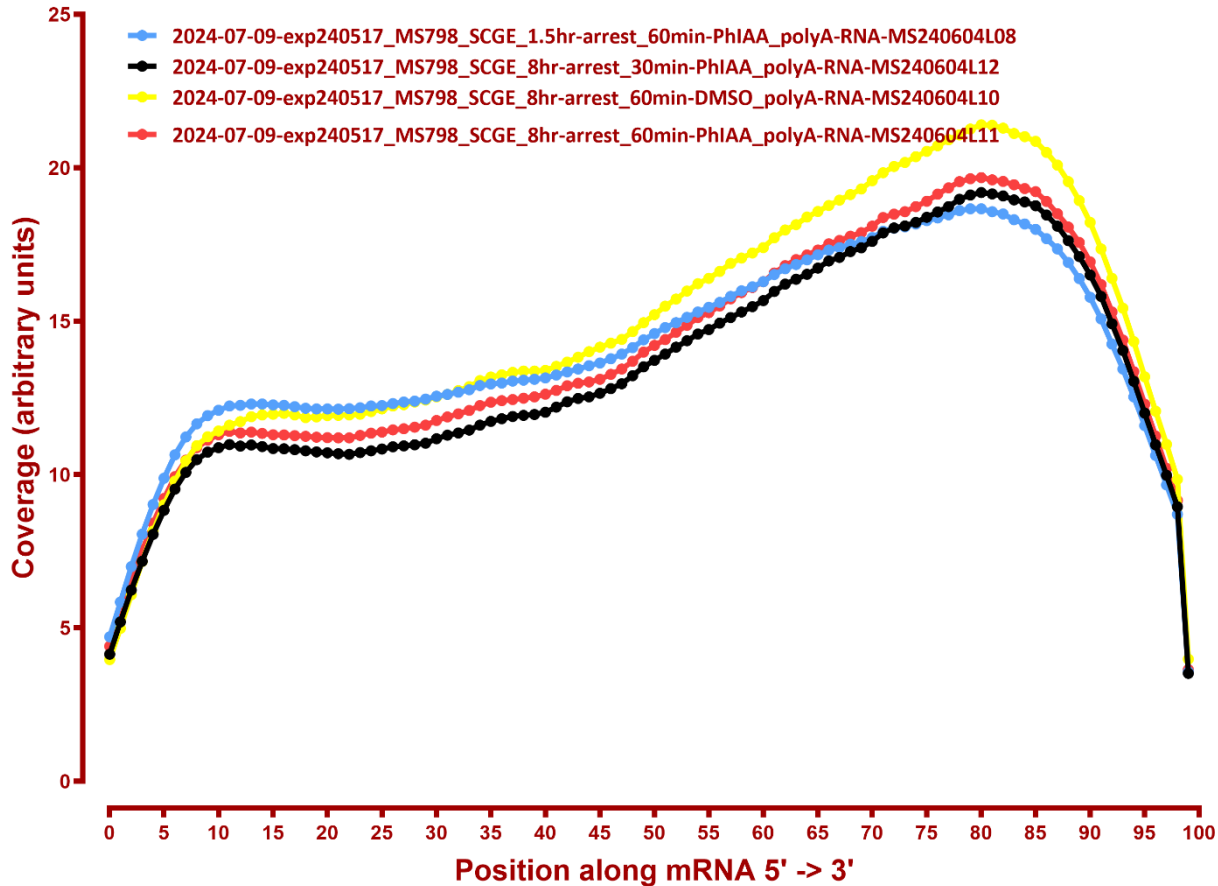
## Coverage of genes; >1000bp, sacCer3



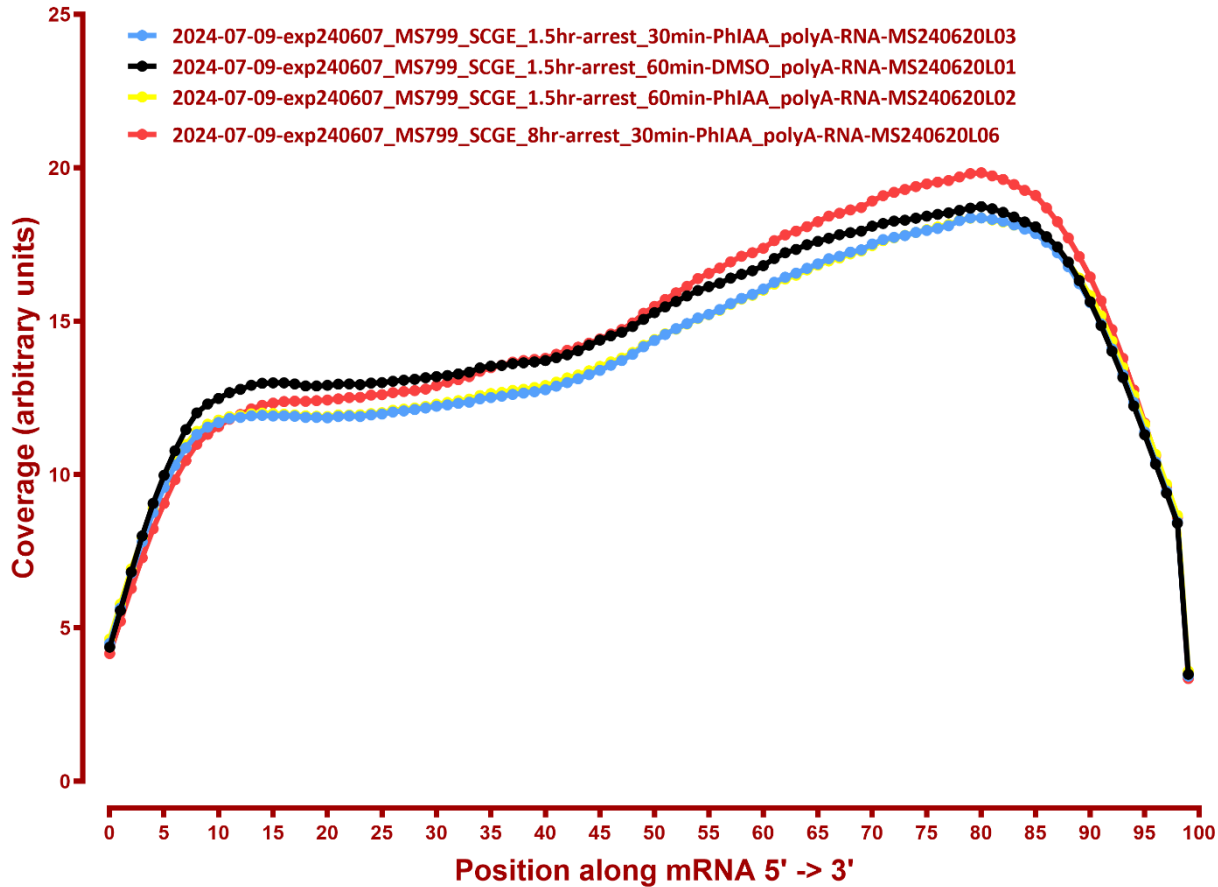
## Coverage of genes; >1000bp, sacCer3



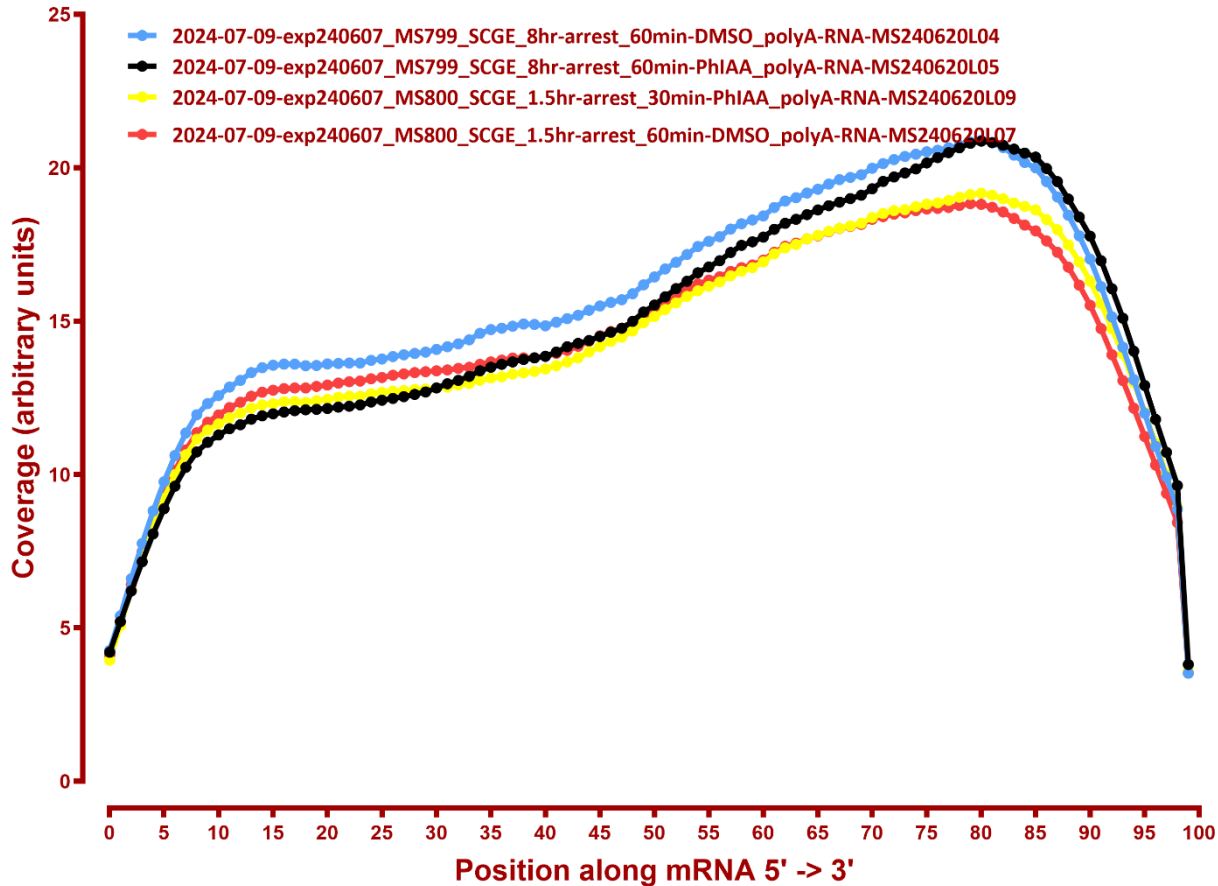
## Coverage of genes; >1000bp, sacCer3



## Coverage of genes; >1000bp, sacCer3



## Coverage of genes; >1000bp, sacCer3



## Coverage of genes; >1000bp, sacCer3

