

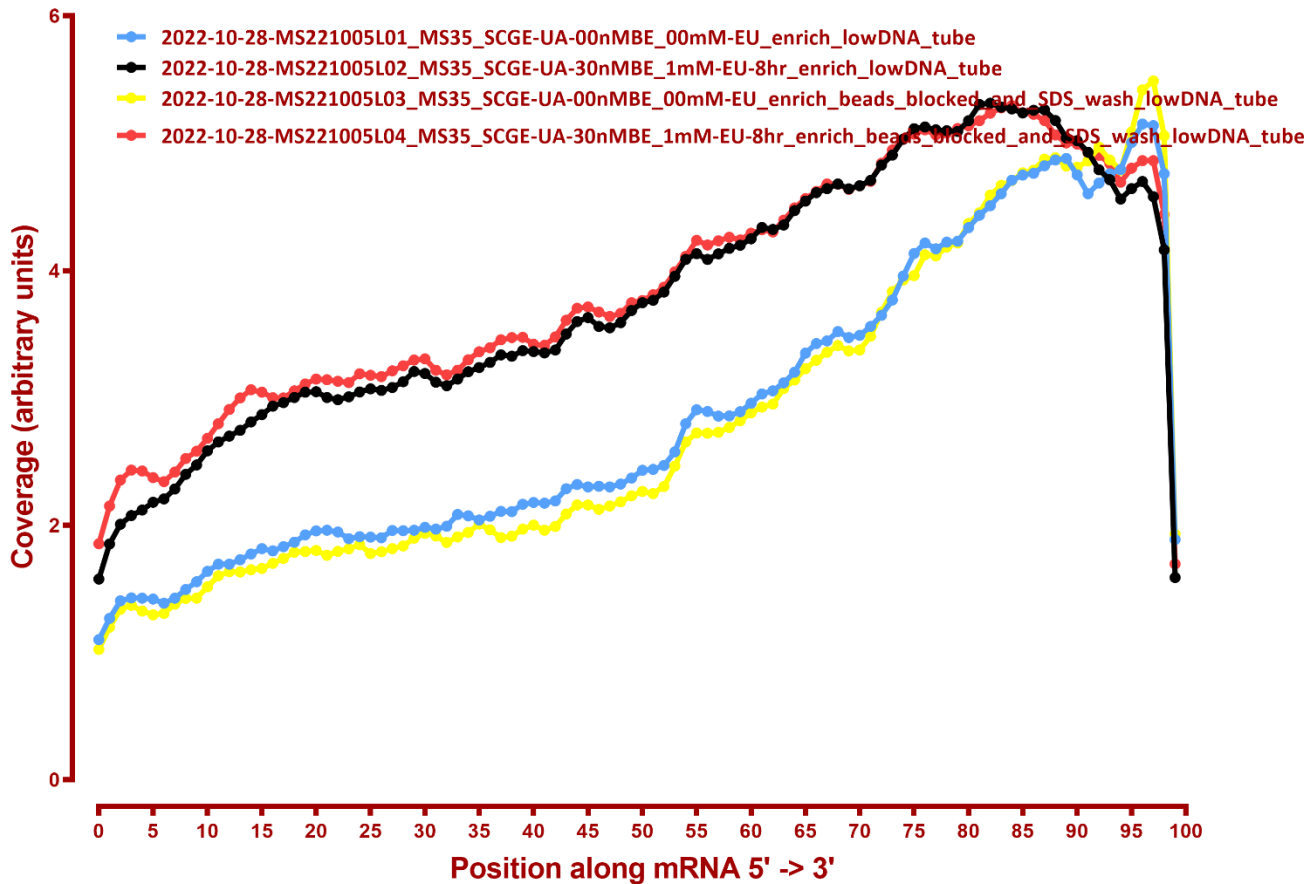
# MAPPING STATS

Library	Read Length	Mapping	Species	Raw fragments	Complexity	Unique	Unique Splices	Multi	Multi Splices	Fraction mapped
2022-10-28-MS221005L01_MS35_SCGE-UA-00nMBE_00mM-EU_enrich_lowDNA_tube	2x150	STAR-2.5.3a	S.pombe	13,470,826	0.54	19,907,218	322,642	688,281	24,999	0.78
2022-10-28-MS221005L01_MS35_SCGE-UA-00nMBE_00mM-EU_enrich_lowDNA_tube	2x150	STAR-2.5.3a	sacCer3	13,470,826	0.81	478,598	4,540	55,514	176	0.02
2022-10-28-MS221005L02_MS35_SCGE-UA-30nMBE_1mM-EU-8hr_enrich_lowDNA_tube	2x150	STAR-2.5.3a	S.pombe	10,092,135	0.55	16,785,524	267,578	594,995	19,237	0.88
2022-10-28-MS221005L02_MS35_SCGE-UA-30nMBE_1mM-EU-8hr_enrich_lowDNA_tube	2x150	STAR-2.5.3a	sacCer3	10,092,135	0.80	968,313	5,427	94,144	280	0.05
2022-10-28-MS221005L03_MS35_SCGE-UA-00nMBE_00mM-EU_enrich_beads_blocked	2x150	STAR-2.5.3a	S.pombe	10,555,734	0.54	18,910,759	300,407	654,586	28,692	0.94
2022-10-28-MS221005L03_MS35_SCGE-UA-00nMBE_00mM-EU_enrich_beads_blocked	2x150	STAR-2.5.3a	sacCer3	10,555,734	0.83	300,515	2,815	86,901	95	0.02
2022-10-28-MS221005L04_MS35_SCGE-UA-30nMBE_1mM-EU-8hr_enrich_beads_blocke	2x150	STAR-2.5.3a	S.pombe	10,988,781	0.54	19,245,095	301,597	661,698	22,834	0.92
2022-10-28-MS221005L04_MS35_SCGE-UA-30nMBE_1mM-EU-8hr_enrich_beads_blocke	2x150	STAR-2.5.3a	sacCer3	10,988,781	0.80	990,274	5,574	97,900	172	0.05
2022-10-28-MS221005L05_MS35_SCGE-UA-00nMBE_00mM-EU_enrich_beads_blocked	2x150	STAR-2.5.3a	S.pombe	11,544,019	0.55	20,385,450	315,476	646,352	24,466	0.93
2022-10-28-MS221005L05_MS35_SCGE-UA-00nMBE_00mM-EU_enrich_beads_blocked	2x150	STAR-2.5.3a	sacCer3	11,544,019	0.86	166,252	1,154	196,010	54	0.02
2022-10-28-MS221005L06_MS35_SCGE-UA-30nMBE_1mM-EU-8hr_enrich_beads_blocke	2x150	STAR-2.5.3a	S.pombe	11,521,048	0.55	19,686,540	304,756	637,761	25,897	0.90
2022-10-28-MS221005L06_MS35_SCGE-UA-30nMBE_1mM-EU-8hr_enrich_beads_blocke	2x150	STAR-2.5.3a	sacCer3	11,521,048	0.81	968,751	4,399	96,319	173	0.05
2022-10-28-MS221026L01_MS94_SCGE-U-00nMBE_00mM-EU_input	2x150	STAR-2.5.3a	S.pombe	6,469,807	0.60	7,148,846	177,466	299,603	12,099	0.59
2022-10-28-MS221026L01_MS94_SCGE-U-00nMBE_00mM-EU_input	2x150	STAR-2.5.3a	sacCer3	6,469,807	0.68	4,584,872	52,020	326,275	2,653	0.38
2022-10-28-MS221026L02_MS94_SCGE-U-00nMBE_25nM-EU_input	2x150	STAR-2.5.3a	S.pombe	7,163,603	0.59	7,955,003	200,961	368,442	11,074	0.60
2022-10-28-MS221026L02_MS94_SCGE-U-00nMBE_25nM-EU_input	2x150	STAR-2.5.3a	sacCer3	7,163,603	0.68	4,961,846	57,720	382,746	2,798	0.38
2022-10-28-MS221026L03_MS94_SCGE-U-18nMBE_00mM-EU_input	2x150	STAR-2.5.3a	S.pombe	6,836,909	0.61	6,717,488	162,824	281,452	9,180	0.52
2022-10-28-MS221026L03_MS94_SCGE-U-18nMBE_00mM-EU_input	2x150	STAR-2.5.3a	sacCer3	6,836,909	0.67	5,681,370	61,400	384,062	2,678	0.45
2022-10-28-MS221026L04_MS94_SCGE-U-18nMBE_50nM-EU_input	2x150	STAR-2.5.3a	S.pombe	6,304,807	0.62	5,979,882	147,010	240,389	8,193	0.51
2022-10-28-MS221026L04_MS94_SCGE-U-18nMBE_50nM-EU_input	2x150	STAR-2.5.3a	sacCer3	6,304,807	0.68	5,277,376	57,040	350,361	2,535	0.45
2022-10-28-MS221026L05_MS94_SCGE-U-00nMBE_00mM-EU_enrich_PCR_tubes	2x150	STAR-2.5.3a	S.pombe	11,995,742	0.53	21,332,201	357,755	732,224	26,800	0.94
2022-10-28-MS221026L05_MS94_SCGE-U-00nMBE_00mM-EU_enrich_PCR_tubes	2x150	STAR-2.5.3a	sacCer3	11,995,742	0.81	503,629	5,307	94,889	601	0.03
2022-10-28-MS221026L06_MS94_SCGE-U-00nMBE_25nM-EU_enrich_PCR_tubes	2x150	STAR-2.5.3a	S.pombe	12,702,115	0.64	8,570,232	144,284	313,455	7,987	0.36
2022-10-28-MS221026L06_MS94_SCGE-U-00nMBE_25nM-EU_enrich_PCR_tubes	2x150	STAR-2.5.3a	sacCer3	12,702,115	0.61	14,488,935	93,939	962,151	5,305	0.61
2022-10-28-MS221026L07_MS94_SCGE-U-18nMBE_00mM-EU_enrich_PCR_tubes	2x150	STAR-2.5.3a	S.pombe	14,013,295	0.55	20,406,379	321,595	700,382	23,856	0.77
2022-10-28-MS221026L07_MS94_SCGE-U-18nMBE_00mM-EU_enrich_PCR_tubes	2x150	STAR-2.5.3a	sacCer3	14,013,295	0.83	448,165	3,681	78,764	272	0.02
2022-10-28-MS221026L08_MS94_SCGE-U-18nMBE_50nM-EU_enrich_PCR_tubes	2x150	STAR-2.5.3a	S.pombe	12,584,081	0.65	7,452,873	122,219	260,111	7,801	0.31
2022-10-28-MS221026L08_MS94_SCGE-U-18nMBE_50nM-EU_enrich_PCR_tubes	2x150	STAR-2.5.3a	sacCer3	12,584,081	0.61	15,273,344	91,756	962,514	8,778	0.65

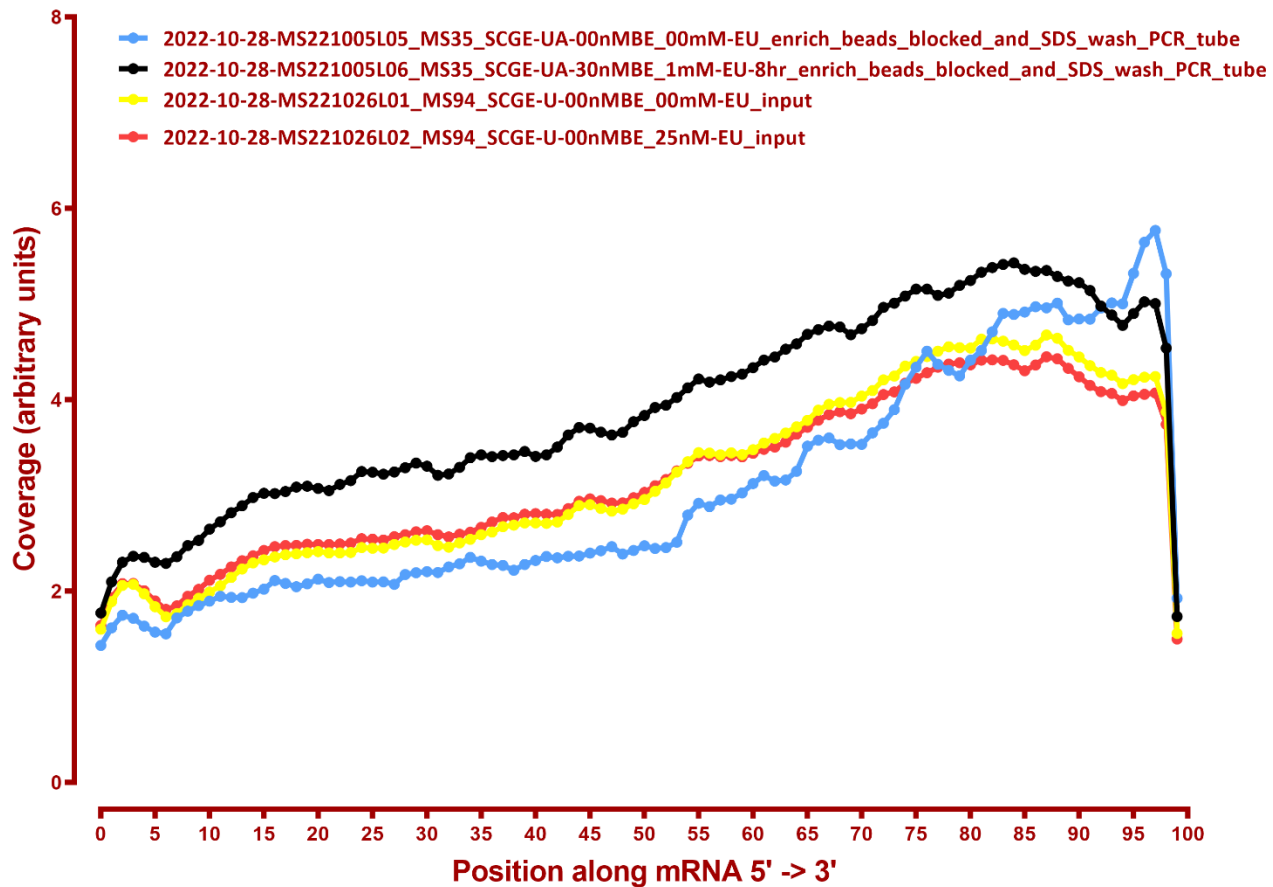
#	Exonic:	Intergenic:	Intronic:
2022-10-28-MS221005L01_MS35_SCGE-UA-00nMBE_00mM-EU_enrich_lowDNA_tube.Schizosaccharomyces_pombe.ASM294v2.20	0.99	0.01	0.00
2022-10-28-MS221005L01_MS35_SCGE-UA-00nMBE_00mM-EU_enrich_lowDNA_tube.sacCer3	0.90	0.10	0.00
2022-10-28-MS221005L02_MS35_SCGE-UA-30nMBE_1mM-EU-8hr_enrich_lowDNA_tube.Schizosaccharomyces_pombe.ASM294v2.20	0.99	0.01	0.00
2022-10-28-MS221005L02_MS35_SCGE-UA-30nMBE_1mM-EU-8hr_enrich_lowDNA_tube.sacCer3	0.93	0.07	0.00
2022-10-28-MS221005L03_MS35_SCGE-UA-00nMBE_00mM-EU_enrich_beads_blocked_and_SDS_wash_lowDNA_tube.Schizosaccharomyces_pombe.ASM294v2.20	0.99	0.01	0.00
2022-10-28-MS221005L03_MS35_SCGE-UA-00nMBE_00mM-EU_enrich_beads_blocked_and_SDS_wash_lowDNA_tube.sacCer3	0.89	0.11	0.00
2022-10-28-MS221005L04_MS35_SCGE-UA-30nMBE_1mM-EU-8hr_enrich_beads_blocked_and_SDS_wash_lowDNA_tube.Schizosaccharomyces_pombe.ASM294v2.20	0.99	0.01	0.00
2022-10-28-MS221005L04_MS35_SCGE-UA-30nMBE_1mM-EU-8hr_enrich_beads_blocked_and_SDS_wash_lowDNA_tube.sacCer3	0.93	0.07	0.00
2022-10-28-MS221005L05_MS35_SCGE-UA-00nMBE_00mM-EU_enrich_beads_blocked_and_SDS_wash_PCR_tube.Schizosaccharomyces_pombe.ASM294v2.20	0.99	0.01	0.00
2022-10-28-MS221005L05_MS35_SCGE-UA-00nMBE_00mM-EU_enrich_beads_blocked_and_SDS_wash_PCR_tube.sacCer3	0.88	0.12	0.00
2022-10-28-MS221005L06_MS35_SCGE-UA-30nMBE_1mM-EU-8hr_enrich_beads_blocked_and_SDS_wash_PCR_tube.Schizosaccharomyces_pombe.ASM294v2.20	0.99	0.01	0.00
2022-10-28-MS221005L06_MS35_SCGE-UA-30nMBE_1mM-EU-8hr_enrich_beads_blocked_and_SDS_wash_PCR_tube.sacCer3	0.92	0.08	0.00
2022-10-28-MS221026L01_MS94_SCGE-U-00nMBE_00mM-EU_input.Schizosaccharomyces_pombe.ASM294v2.20	0.99	0.01	0.00
2022-10-28-MS221026L01_MS94_SCGE-U-00nMBE_00mM-EU_input.sacCer3	0.92	0.08	0.00
2022-10-28-MS221026L02_MS94_SCGE-U-00nMBE_25nM-EU_input.Schizosaccharomyces_pombe.ASM294v2.20	0.99	0.01	0.00
2022-10-28-MS221026L02_MS94_SCGE-U-00nMBE_25nM-EU_input.sacCer3	0.92	0.08	0.00
2022-10-28-MS221026L03_MS94_SCGE-U-18nMBE_00mM-EU_input.Schizosaccharomyces_pombe.ASM294v2.20	0.99	0.01	0.00
2022-10-28-MS221026L03_MS94_SCGE-U-18nMBE_00mM-EU_input.sacCer3	0.92	0.08	0.00
2022-10-28-MS221026L04_MS94_SCGE-U-18nMBE_50nM-EU_input.Schizosaccharomyces_pombe.ASM294v2.20	0.99	0.01	0.00
2022-10-28-MS221026L04_MS94_SCGE-U-18nMBE_50nM-EU_input.sacCer3	0.92	0.08	0.00
2022-10-28-MS221026L05_MS94_SCGE-U-00nMBE_00mM-EU_enrich_PCR_tubes.Schizosaccharomyces_pombe.ASM294v2.20	0.99	0.01	0.00
2022-10-28-MS221026L05_MS94_SCGE-U-00nMBE_00mM-EU_enrich_PCR_tubes.sacCer3	0.90	0.09	0.00
2022-10-28-MS221026L06_MS94_SCGE-U-00nMBE_25nM-EU_enrich_PCR_tubes.Schizosaccharomyces_pombe.ASM294v2.20	0.99	0.01	0.00
2022-10-28-MS221026L06_MS94_SCGE-U-00nMBE_25nM-EU_enrich_PCR_tubes.sacCer3	0.93	0.07	0.00
2022-10-28-MS221026L07_MS94_SCGE-U-18nMBE_00mM-EU_enrich_PCR_tubes.Schizosaccharomyces_pombe.ASM294v2.20	0.99	0.01	0.00
2022-10-28-MS221026L07_MS94_SCGE-U-18nMBE_00mM-EU_enrich_PCR_tubes.sacCer3	0.91	0.09	0.00
2022-10-28-MS221026L08_MS94_SCGE-U-18nMBE_50nM-EU_enrich_PCR_tubes.Schizosaccharomyces_pombe.ASM294v2.20	0.99	0.01	0.00
2022-10-28-MS221026L08_MS94_SCGE-U-18nMBE_50nM-EU_enrich_PCR_tubes.sacCer3	0.93	0.07	0.00

# COVERAGE ALL READS

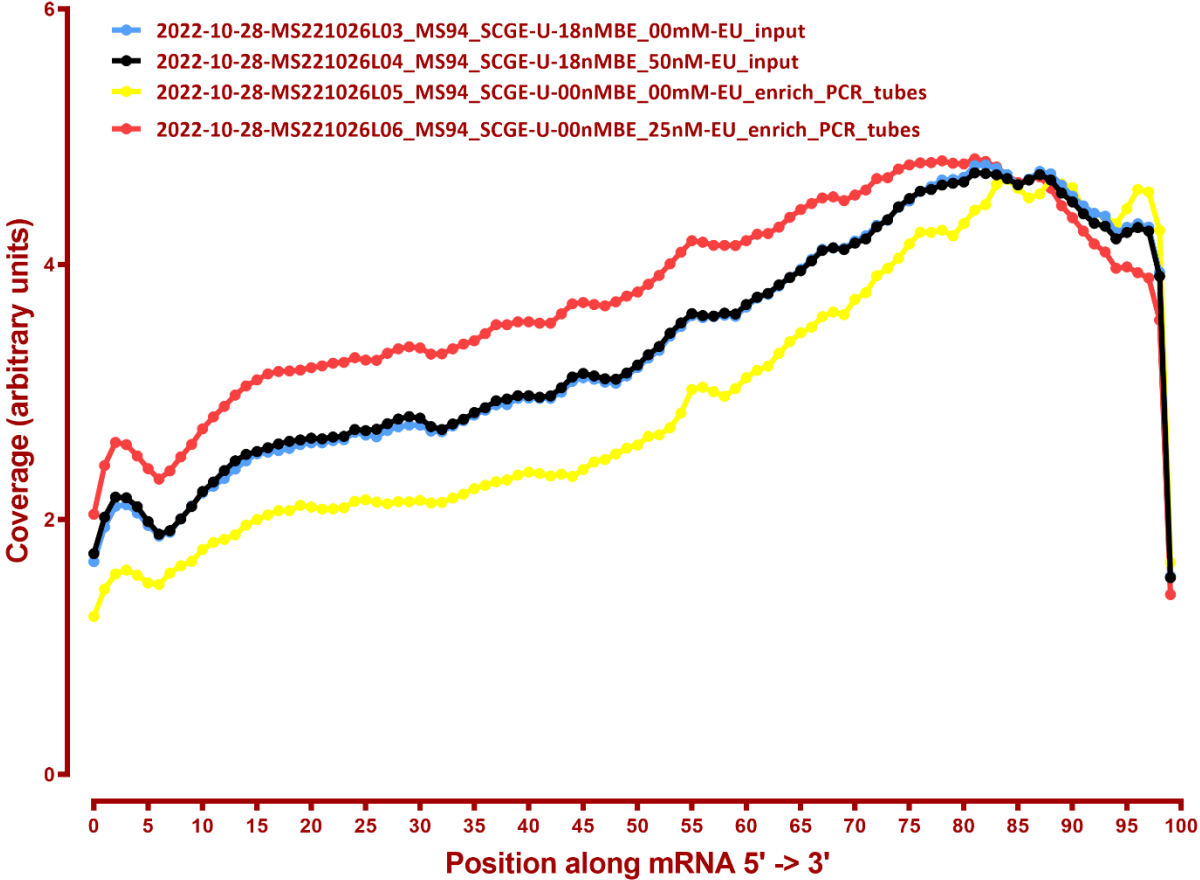
## Coverage of genes; >1000bp, sacCer3



## Coverage of genes; >1000bp, sacCer3



# Coverage of genes; >1000bp, sacCer3



### Coverage of genes; >1000bp, sacCer3

