

MAPPING STATS

Library	Read Length	Mapping	Species	Raw fragments	Complexity	Unique	Unique Splices	Multi	Multi Splices	Fraction mapped
2019-10-25-HLF-1A-HLF_bin1_rep1.dm6	2x150	STAR-2.5.3a	dm6	38,171,561	0.49	7,983,462	2,627,896	1,478,116	139,650	0.16
2019-10-25-HLF-1A-HLF_bin1_rep1.hg38	2x150	STAR-2.5.3a	hg38	38,171,561	0.47	30,204,709	23,713,467	5,888,904	1,661,218	0.81
2019-10-25-HLF-1C-HLF_bin1_rep2.dm6	2x150	STAR-2.5.3a	dm6	45,021,805	0.48	10,255,869	3,400,893	1,929,664	190,234	0.18
2019-10-25-HLF-1C-HLF_bin1_rep2.hg38	2x150	STAR-2.5.3a	hg38	45,021,805	0.47	34,455,698	27,483,870	7,166,552	1,938,062	0.79
2019-10-25-HLF-2A-HLF_bin2_rep1.dm6	2x150	STAR-2.5.3a	dm6	43,599,592	0.42	9,320,292	2,810,402	1,817,314	156,474	0.16
2019-10-25-HLF-2A-HLF_bin2_rep1.hg38	2x150	STAR-2.5.3a	hg38	43,599,592	0.40	34,701,214	27,437,656	5,609,022	1,903,912	0.80
2019-10-25-HLF-2C-HLF_bin2_rep2.dm6	2x150	STAR-2.5.3a	dm6	40,141,480	0.48	7,808,609	2,556,471	1,538,957	141,237	0.15
2019-10-25-HLF-2C-HLF_bin2_rep2.hg38	2x150	STAR-2.5.3a	hg38	40,141,480	0.46	32,547,800	25,629,668	5,544,864	1,781,512	0.82
2019-10-25-HLF-3A-HLF_bin3_rep1.dm6	2x150	STAR-2.5.3a	dm6	42,347,022	0.50	6,977,859	2,279,531	1,345,164	123,902	0.13
2019-10-25-HLF-3A-HLF_bin3_rep1.hg38	2x150	STAR-2.5.3a	hg38	42,347,022	0.46	34,290,657	27,278,113	7,841,805	1,971,871	0.84
2019-10-25-HLF-3C-HLF_bin3_rep2.dm6	2x150	STAR-2.5.3a	dm6	49,312,645	0.50	9,233,028	3,090,406	1,702,676	163,794	0.14
2019-10-25-HLF-3C-HLF_bin3_rep2.hg38	2x150	STAR-2.5.3a	hg38	49,312,645	0.47	37,805,140	30,713,094	10,292,669	2,211,567	0.82
2019-10-25-HLF-4A-HLF_bin4_rep1.dm6	2x150	STAR-2.5.3a	dm6	50,099,696	0.49	8,593,768	2,800,058	1,680,641	155,737	0.13
2019-10-25-HLF-4A-HLF_bin4_rep1.hg38	2x150	STAR-2.5.3a	hg38	50,099,696	0.45	40,580,974	32,294,834	8,286,048	2,373,336	0.83
2019-10-25-HLF-4C-HLF_bin4_rep2.dm6	2x150	STAR-2.5.3a	dm6	44,265,991	0.52	6,822,736	2,286,304	1,256,603	121,785	0.12
2019-10-25-HLF-4C-HLF_bin4_rep2.hg38	2x150	STAR-2.5.3a	hg38	44,265,991	0.47	35,014,289	29,396,103	8,369,127	2,149,509	0.85
2019-10-25-HLF-SortAll-A-HLF_sort-all_rep1.dm6	2x150	STAR-2.5.3a	dm6	56,756,999	0.46	8,118,270	2,703,860	1,475,209	148,467	0.11
2019-10-25-HLF-SortAll-A-HLF_sort-all_rep1.hg38	2x150	STAR-2.5.3a	hg38	56,756,999	0.44	34,081,095	27,224,451	9,335,608	1,961,766	0.64
2019-10-25-HLF-pre-Sort-A-HLF_pre-sort_rep1.dm6	2x150	STAR-2.5.3a	dm6	37,582,649	0.48	10,866,374	3,725,252	2,241,045	217,783	0.23
2019-10-25-HLF-pre-Sort-A-HLF_pre-sort_rep1.hg38	2x150	STAR-2.5.3a	hg38	37,582,649	0.45	42,232,626	36,513,828	11,079,053	2,826,305	1.23
2019-10-25-HLF-pre-Sort-C-HLF_pre-sort_rep2.dm6	2x150	STAR-2.5.3a	dm6	43,663,901	0.47	3,958,329	1,495,713	668,005	86,707	0.07
2019-10-25-HLF-pre-Sort-C-HLF_pre-sort_rep2.hg38	2x150	STAR-2.5.3a	hg38	43,663,901	0.46	31,342,895	26,677,089	6,808,919	1,920,227	0.76

MAPPING STATS

Library	Read Length	Mapping	Species	Raw fragments	Complexity	Unique	Unique Splices	Multi	Multi Splices	Fraction mapped
2019-12-13-HFL_palobo_bin1_rep3.dm6	2x150	STAR-2.5.3a	dm6	54,731,399	0.39	11,145,618	3,526,124	2,281,373	199,983	0.16
2019-12-13-HFL_palobo_bin1_rep3.hg38	2x150	STAR-2.5.3a	hg38	54,731,399	0.38	44,694,658	33,458,944	8,730,994	2,416,734	0.82
2019-12-13-HFL_palobo_bin1_rep4.dm6	2x150	STAR-2.5.3a	dm6	54,901,635	0.36	19,035,257	6,042,879	3,983,748	350,034	0.27
2019-12-13-HFL_palobo_bin1_rep4.hg38	2x150	STAR-2.5.3a	hg38	54,901,635	0.38	39,447,058	29,172,582	6,773,937	2,036,861	0.71
2019-12-13-HFL_palobo_bin2_rep3.dm6	2x150	STAR-2.5.3a	dm6	51,217,985	0.36	10,201,173	3,202,803	2,193,201	183,329	0.15
2019-12-13-HFL_palobo_bin2_rep3.hg38	2x150	STAR-2.5.3a	hg38	51,217,985	0.35	41,561,883	31,113,489	8,779,662	2,209,318	0.82
2019-12-13-HFL_palobo_bin2_rep4.dm6	2x150	STAR-2.5.3a	dm6	51,685,456	0.35	16,046,210	5,133,506	3,321,591	305,005	0.24
2019-12-13-HFL_palobo_bin2_rep4.hg38	2x150	STAR-2.5.3a	hg38	51,685,456	0.36	37,651,199	29,030,475	6,901,007	2,047,667	0.73
2019-12-13-HFL_palobo_bin3_rep3.dm6	2x150	STAR-2.5.3a	dm6	45,856,164	0.36	8,111,941	2,581,037	1,590,865	145,913	0.14
2019-12-13-HFL_palobo_bin3_rep3.hg38	2x150	STAR-2.5.3a	hg38	45,856,164	0.34	37,435,188	29,147,984	8,107,861	2,098,287	0.84
2019-12-13-HFL_palobo_bin3_rep4.dm6	2x150	STAR-2.5.3a	dm6	42,321,118	0.33	11,694,552	3,734,966	2,416,597	215,133	0.21
2019-12-13-HFL_palobo_bin3_rep4.hg38	2x150	STAR-2.5.3a	hg38	42,321,118	0.33	32,110,692	25,446,572	4,592,947	1,648,915	0.75
2019-12-13-HFL_palobo_bin4_rep3.dm6	2x150	STAR-2.5.3a	dm6	52,203,315	0.31	7,811,929	2,431,363	1,675,790	134,490	0.12
2019-12-13-HFL_palobo_bin4_rep3.hg38	2x150	STAR-2.5.3a	hg38	52,203,315	0.28	44,788,534	34,021,692	8,071,891	2,351,357	0.85
2019-12-13-HFL_palobo_bin4_rep4.dm6	2x150	STAR-2.5.3a	dm6	47,394,346	0.39	10,966,181	3,486,647	2,275,127	196,745	0.18
2019-12-13-HFL_palobo_bin4_rep4.hg38	2x150	STAR-2.5.3a	hg38	47,394,346	0.38	37,574,160	28,839,902	7,042,070	2,013,972	0.80
2019-12-13-HFL_palobo_pre-sort_rep3.dm6	2x150	STAR-2.5.3a	dm6	47,723,063	0.33	9,512,873	3,159,497	2,092,631	184,159	0.16
2019-12-13-HFL_palobo_pre-sort_rep3.hg38	2x150	STAR-2.5.3a	hg38	47,723,063	0.32	36,035,761	29,815,325	9,921,114	2,096,540	0.82
2019-12-13-HFL_palobo_pre-sort_rep4.dm6	2x150	STAR-2.5.3a	dm6	50,329,677	0.37	4,188,190	1,525,002	984,854	93,814	0.07
2019-12-13-HFL_palobo_pre-sort_rep4.hg38	2x150	STAR-2.5.3a	hg38	50,329,677	0.37	42,726,414	33,215,430	12,847,054	2,474,276	0.91
2019-12-13-HFL_palobo_sort-all_rep3.dm6	2x150	STAR-2.5.3a	dm6	48,823,436	0.36	9,854,674	3,050,136	2,061,742	171,320	0.16
2019-12-13-HFL_palobo_sort-all_rep3.hg38	2x150	STAR-2.5.3a	hg38	48,823,436	0.35	39,788,232	28,713,542	9,231,787	2,037,287	0.82
2019-12-13-HFL_palobo_sort-all_rep4.dm6	2x150	STAR-2.5.3a	dm6	51,158,724	0.35	10,455,707	3,393,799	2,107,526	186,770	0.16
2019-12-13-HFL_palobo_sort-all_rep4.hg38	2x150	STAR-2.5.3a	hg38	51,158,724	0.34	41,762,841	32,978,039	6,595,703	2,317,323	0.82
2019-12-13-HMEC_G1_bin1_rep1.dm6	2x150	STAR-2.5.3a	dm6	51,007,964	0.95	2,371	697	551	21	0.00
2019-12-13-HMEC_G1_bin1_rep1.hg38	2x150	STAR-2.5.3a	hg38	51,007,964	0.30	52,120,908	40,583,838	3,177,903	2,815,599	0.97
2019-12-13-HMEC_G1_bin1_rep2.dm6	2x150	STAR-2.5.3a	dm6	50,920,184	0.96	2,460	762	607	35	0.00
2019-12-13-HMEC_G1_bin1_rep2.hg38	2x150	STAR-2.5.3a	hg38	50,920,184	0.27	50,171,849	39,931,397	5,168,793	2,760,979	0.96
2019-12-13-HMEC_G1_bin4_rep1.dm6	2x150	STAR-2.5.3a	dm6	61,923,234	0.97	1,390	454	305	15	0.00
2019-12-13-HMEC_G1_bin4_rep1.hg38	2x150	STAR-2.5.3a	hg38	61,923,234	0.32	61,711,853	48,090,367	6,656,177	3,515,145	0.97
2019-12-13-HMEC_G1_bin4_rep2.dm6	2x150	STAR-2.5.3a	dm6	48,812,922	0.97	1,786	560	359	39	0.00
2019-12-13-HMEC_G1_bin4_rep2.hg38	2x150	STAR-2.5.3a	hg38	48,812,922	0.33	47,626,407	39,721,243	4,017,688	2,907,294	0.97

MAPPING STATS

Library	Read Length	Mapping	Species	Raw fragments	Complexity	Unique	Unique Splices	Multi	Multi Splices	Fraction mapped
2020-02-17-HMEC_G1_bin1_rep1.dm6	2x150	STAR-2.5.3a	dm6	51,007,964	0.95	2,371	697	551	21	0.00
2020-02-17-HMEC_G1_bin1_rep1.hg38	2x150	STAR-2.5.3a	hg38	51,007,964	0.30	52,120,908	40,583,838	3,177,903	2,815,599	0.97
2020-02-17-HMEC_G1_bin1_rep2.dm6	2x150	STAR-2.5.3a	dm6	50,920,184	0.96	2,460	762	607	35	0.00
2020-02-17-HMEC_G1_bin1_rep2.hg38	2x150	STAR-2.5.3a	hg38	50,920,184	0.27	50,171,849	39,931,397	5,168,793	2,760,979	0.96
2020-02-17-HMEC_G1_bin4_rep1.dm6	2x150	STAR-2.5.3a	dm6	61,923,234	0.97	1,390	454	305	15	0.00
2020-02-17-HMEC_G1_bin4_rep1.hg38	2x150	STAR-2.5.3a	hg38	61,923,234	0.32	61,711,853	48,090,367	6,656,177	3,515,145	0.97
2020-02-17-HMEC_G1_bin4_rep2.dm6	2x150	STAR-2.5.3a	dm6	48,812,922	0.97	1,786	560	359	39	0.00
2020-02-17-HMEC_G1_bin4_rep2.hg38	2x150	STAR-2.5.3a	hg38	48,812,922	0.33	47,626,407	39,721,243	4,017,688	2,907,294	0.97
2020-02-17-HMEC_SG2M_bin1_rep1.dm6	2x150	STAR-2.5.3a	dm6	25,126,115	1.00	8	0	8	2	0.00
2020-02-17-HMEC_SG2M_bin1_rep1.hg38	2x150	STAR-2.5.3a	hg38	25,126,115	0.52	26,673,358	19,821,202	1,098,464	1,393,806	0.97
2020-02-17-HMEC_SG2M_bin1_rep2.dm6	2x150	STAR-2.5.3a	dm6	50,777,738	1.00	2	2	13	11	0.00
2020-02-17-HMEC_SG2M_bin1_rep2.hg38	2x150	STAR-2.5.3a	hg38	50,777,738	0.43	51,193,538	42,318,896	2,572,785	3,425,221	0.98
2020-02-17-HMEC_SG2M_bin2_rep1.dm6	2x150	STAR-2.5.3a	dm6	48,472,733	N/A	2	0	2	0	0.00
2020-02-17-HMEC_SG2M_bin2_rep1.hg38	2x150	STAR-2.5.3a	hg38	48,472,733	0.40	50,552,978	38,917,886	2,208,254	2,925,588	0.98
2020-02-17-HMEC_SG2M_bin3_rep1.dm6	2x150	STAR-2.5.3a	dm6	48,589,117	0.92	8	0	3	1	0.00
2020-02-17-HMEC_SG2M_bin3_rep1.hg38	2x150	STAR-2.5.3a	hg38	48,589,117	0.45	51,449,576	38,506,430	2,150,300	2,893,434	0.98
2020-02-17-HMEC_SG2M_bin4_rep1.dm6	2x150	STAR-2.5.3a	dm6	54,104,393	0.90	16	0	5	5	0.00
2020-02-17-HMEC_SG2M_bin4_rep1.hg38	2x150	STAR-2.5.3a	hg38	54,104,393	0.40	55,007,235	44,868,473	2,512,807	3,433,091	0.98
2020-02-17-HMEC_SG2M_bin4_rep2.dm6	2x150	STAR-2.5.3a	dm6	51,428,399	1.00	6	0	2	0	0.00
2020-02-17-HMEC_SG2M_bin4_rep2.hg38	2x150	STAR-2.5.3a	hg38	51,428,399	0.44	51,377,944	43,185,414	2,358,172	3,449,522	0.98

READ DISTRIBUTION

hg38				dm6			
	Exonic:	Intergenic:	Intronic:		Exonic:	Intergenic:	Intronic:
2019-10-25-HLF-1A-HLF_bin1_rep1	0.92	0.01	0.07	2019-10-25-HLF-1A-HLF_bin1_rep1	0.96	0.01	0.03
2019-10-25-HLF-1C-HLF_bin1_rep2	0.92	0.01	0.07	2019-10-25-HLF-1C-HLF_bin1_rep2	0.96	0.01	0.03
2019-10-25-HLF-2A-HLF_bin2_rep1	0.92	0.01	0.07	2019-10-25-HLF-2A-HLF_bin2_rep1	0.96	0.01	0.03
2019-10-25-HLF-2C-HLF_bin2_rep2	0.92	0.01	0.07	2019-10-25-HLF-2C-HLF_bin2_rep2	0.96	0.01	0.03
2019-10-25-HLF-3A-HLF_bin3_rep1	0.93	0.01	0.06	2019-10-25-HLF-3A-HLF_bin3_rep1	0.96	0.01	0.03
2019-10-25-HLF-3C-HLF_bin3_rep2	0.92	0.01	0.07	2019-10-25-HLF-3C-HLF_bin3_rep2	0.96	0.01	0.03
2019-10-25-HLF-4A-HLF_bin4_rep1	0.92	0.01	0.07	2019-10-25-HLF-4A-HLF_bin4_rep1	0.96	0.01	0.03
2019-10-25-HLF-4C-HLF_bin4_rep2	0.93	0.01	0.06	2019-10-25-HLF-4C-HLF_bin4_rep2	0.96	0.01	0.03
2019-10-25-HLF-SortAll-A-HLF_sort-all_rep1	0.92	0.01	0.07	2019-10-25-HLF-SortAll-A-HLF_sort-all_rep1	0.96	0.01	0.03
2019-10-25-HLF-pre-Sort-A-HLF_pre-sort_rep1	0.95	0.01	0.04	2019-10-25-HLF-pre-Sort-A-HLF_pre-sort_rep1	0.96	0.01	0.02
2019-10-25-HLF-pre-Sort-C-HLF_pre-sort_rep2	0.94	0.01	0.05	2019-10-25-HLF-pre-Sort-C-HLF_pre-sort_rep2	0.98	0.01	0.02

READ DISTRIBUTION

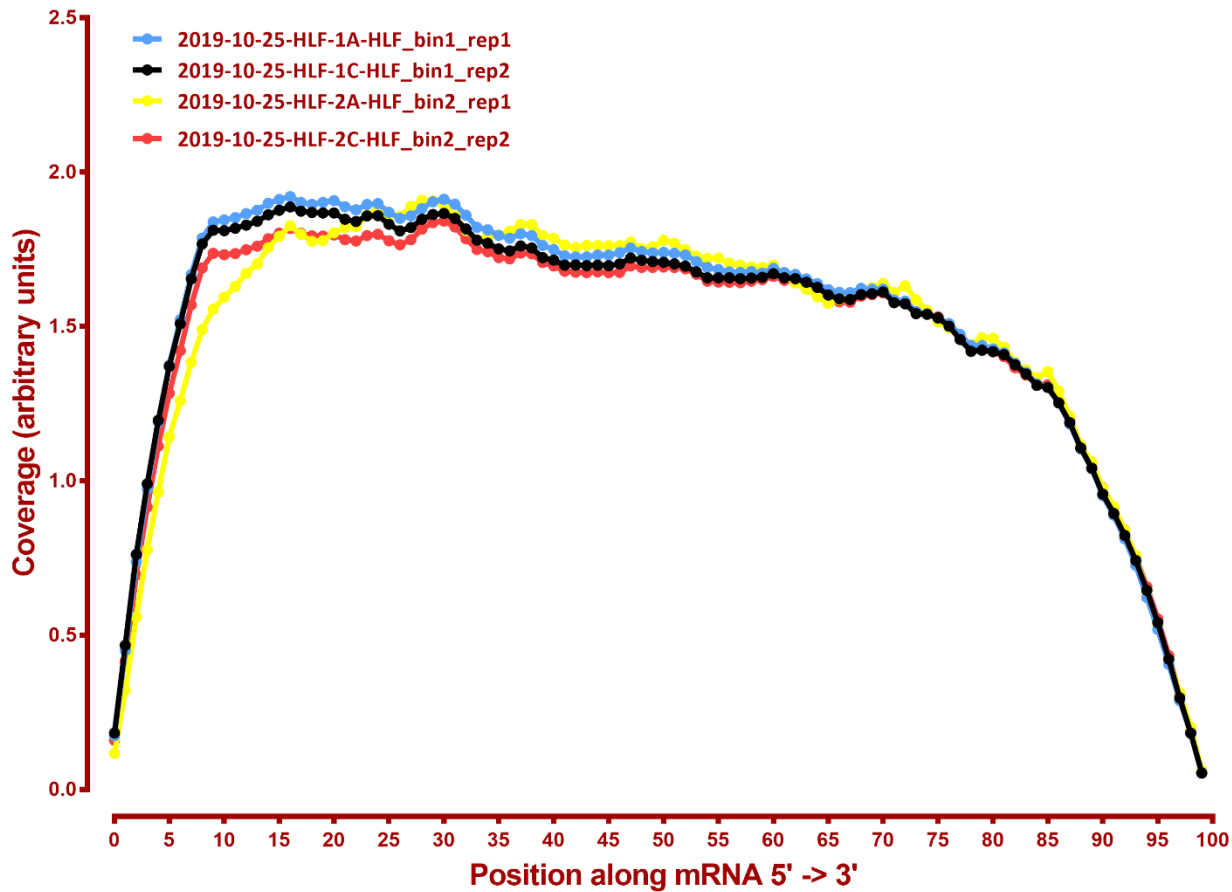
hg38	Exonic:	Intergenic:	Intronic:		dm6	Exonic:	Intergenic:	Intronic:
2019-12-13-HFL_palobo_bin1_rep3	0.91	0.01	0.08		2019-12-13-HFL_palobo_bin1_rep3	0.96	0.01	0.03
2019-12-13-HFL_palobo_bin1_rep4	0.91	0.01	0.08		2019-12-13-HFL_palobo_bin1_rep4	0.96	0.01	0.03
2019-12-13-HFL_palobo_bin2_rep3	0.92	0.01	0.07		2019-12-13-HFL_palobo_bin2_rep3	0.96	0.01	0.03
2019-12-13-HFL_palobo_bin2_rep4	0.92	0.01	0.07		2019-12-13-HFL_palobo_bin2_rep4	0.96	0.01	0.03
2019-12-13-HFL_palobo_bin3_rep3	0.93	0.01	0.06		2019-12-13-HFL_palobo_bin3_rep3	0.96	0.01	0.03
2019-12-13-HFL_palobo_bin3_rep4	0.92	0.01	0.07		2019-12-13-HFL_palobo_bin3_rep4	0.96	0.01	0.03
2019-12-13-HFL_palobo_bin4_rep3	0.92	0.01	0.07		2019-12-13-HFL_palobo_bin4_rep3	0.96	0.01	0.03
2019-12-13-HFL_palobo_bin4_rep4	0.92	0.01	0.07		2019-12-13-HFL_palobo_bin4_rep4	0.96	0.01	0.03
2019-12-13-HFL_palobo_pre-sort_rep3	0.95	0.01	0.04		2019-12-13-HFL_palobo_pre-sort_rep3	0.96	0.01	0.02
2019-12-13-HFL_palobo_pre-sort_rep4	0.92	0.01	0.07		2019-12-13-HFL_palobo_pre-sort_rep4	0.97	0.01	0.02
2019-12-13-HFL_palobo_sort-all_rep3	0.91	0.01	0.08		2019-12-13-HFL_palobo_sort-all_rep3	0.96	0.01	0.03
2019-12-13-HFL_palobo_sort-all_rep4	0.92	0.01	0.06		2019-12-13-HFL_palobo_sort-all_rep4	0.96	0.01	0.03
2019-12-13-HMEC_G1_bin1_rep1	0.92	0.01	0.07		2019-12-13-HMEC_G1_bin1_rep1	0.95	0.02	0.03
2019-12-13-HMEC_G1_bin1_rep2	0.92	0.01	0.07		2019-12-13-HMEC_G1_bin1_rep2	0.95	0.02	0.03
2019-12-13-HMEC_G1_bin4_rep1	0.92	0.01	0.06		2019-12-13-HMEC_G1_bin4_rep1	0.94	0.02	0.04
2019-12-13-HMEC_G1_bin4_rep2	0.94	0.01	0.06		2019-12-13-HMEC_G1_bin4_rep2	0.95	0.02	0.03

READ DISTRIBUTION

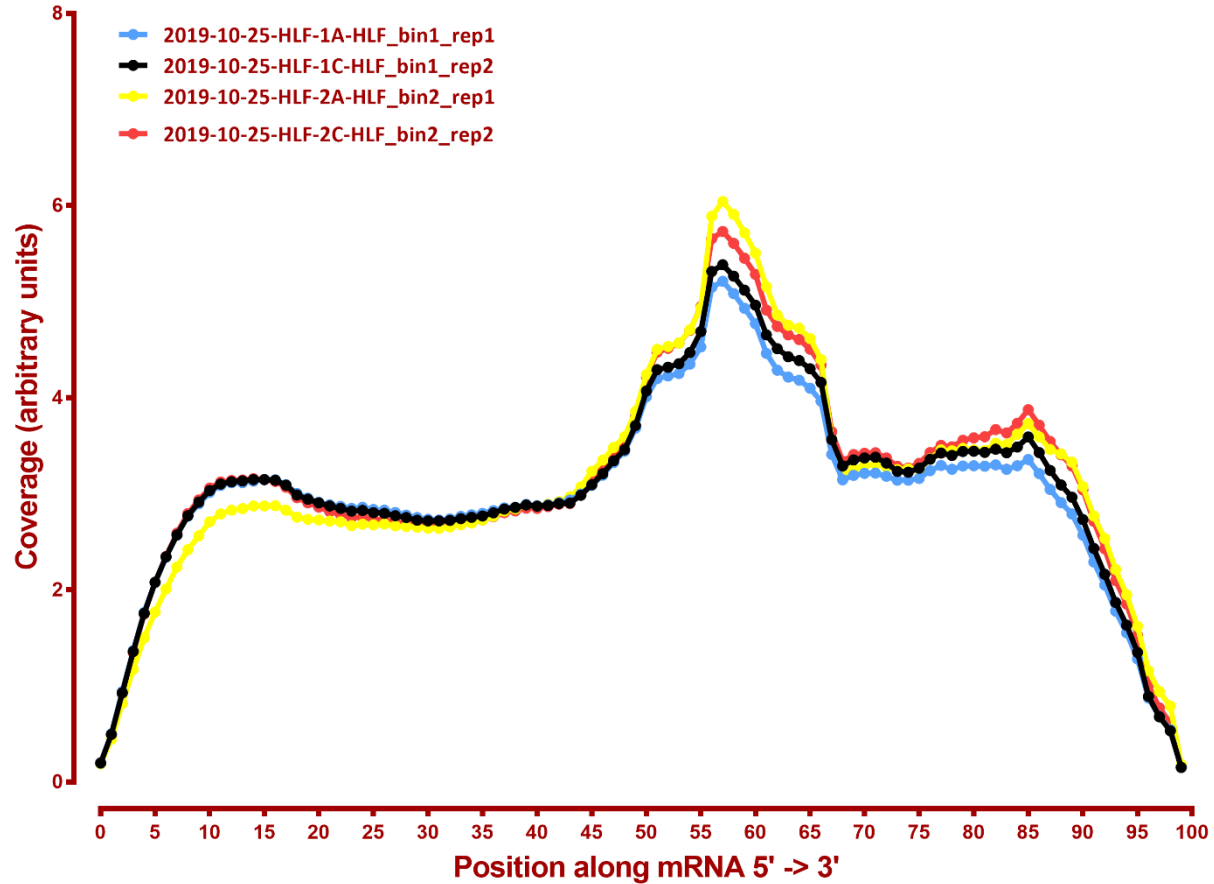
hg38				dm6			
	Exonic:	Intergenic:	Intronic:		Exonic:	Intergenic:	Intronic:
2020-02-17-HMEC_G1_bin1_rep1	0.92	0.01	0.07	2020-02-17-HMEC_G1_bin1_rep1	0.95	0.02	0.03
2020-02-17-HMEC_G1_bin1_rep2	0.92	0.01	0.07	2020-02-17-HMEC_G1_bin1_rep2	0.95	0.02	0.03
2020-02-17-HMEC_G1_bin4_rep1	0.92	0.01	0.06	2020-02-17-HMEC_G1_bin4_rep1	0.94	0.02	0.04
2020-02-17-HMEC_G1_bin4_rep2	0.94	0.01	0.06	2020-02-17-HMEC_G1_bin4_rep2	0.95	0.02	0.03
2020-02-17-HMEC_SG2M_bin1_rep1	0.93	0.01	0.06	2020-02-17-HMEC_SG2M_bin1_rep1	0.50	0.50	0.00
2020-02-17-HMEC_SG2M_bin1_rep2	0.93	0.01	0.06	2020-02-17-HMEC_SG2M_bin1_rep2	0.50	0.50	0.00
2020-02-17-HMEC_SG2M_bin2_rep1	0.93	0.01	0.06	2020-02-17-HMEC_SG2M_bin2_rep1	1.00	0.00	0.00
2020-02-17-HMEC_SG2M_bin3_rep1	0.93	0.01	0.06	2020-02-17-HMEC_SG2M_bin3_rep1	0.00	1.00	0.00
2020-02-17-HMEC_SG2M_bin4_rep1	0.95	0.01	0.04	2020-02-17-HMEC_SG2M_bin4_rep1	0.25	0.75	0.00
2020-02-17-HMEC_SG2M_bin4_rep2	0.95	0.01	0.05	2020-02-17-HMEC_SG2M_bin4_rep2	0.67	0.33	0.00

COVERAGE QC

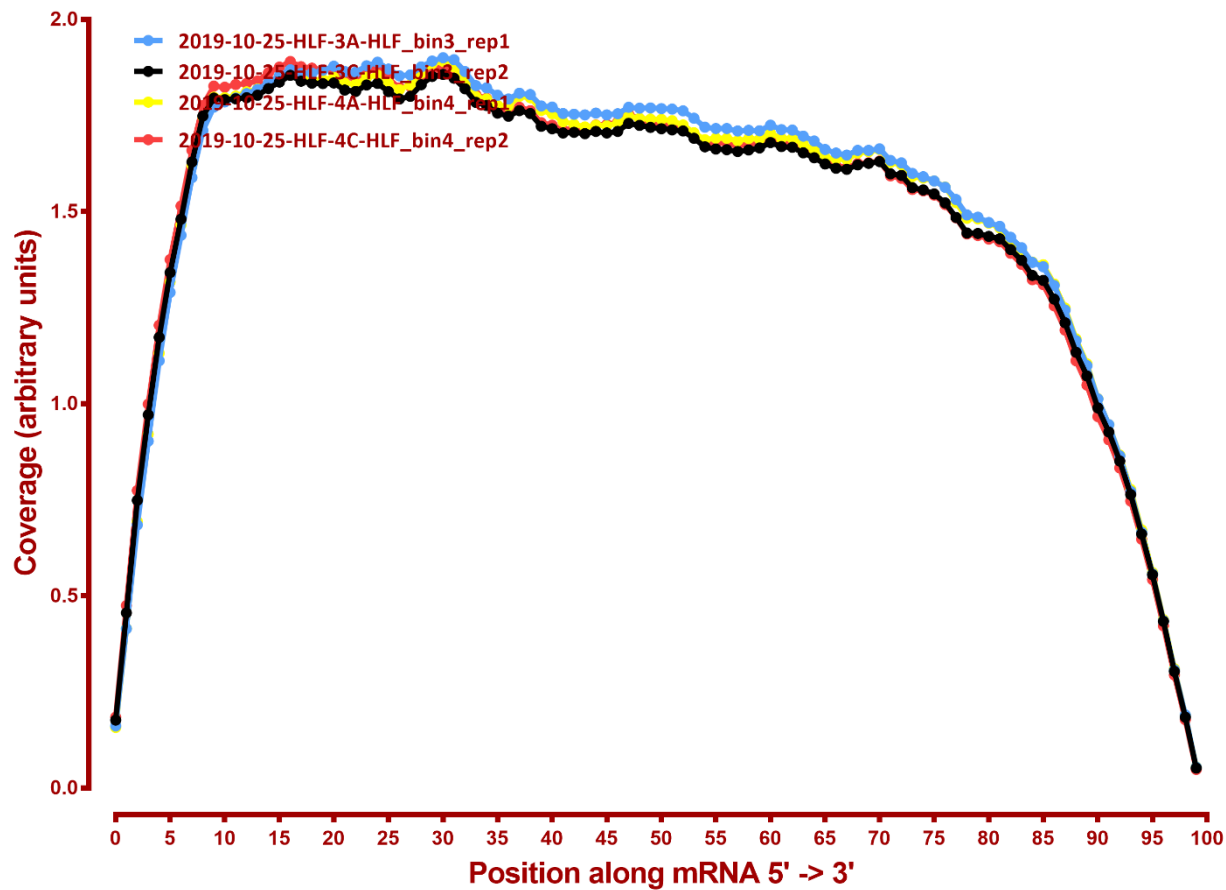
Coverage of genes; >1000bp, hg38



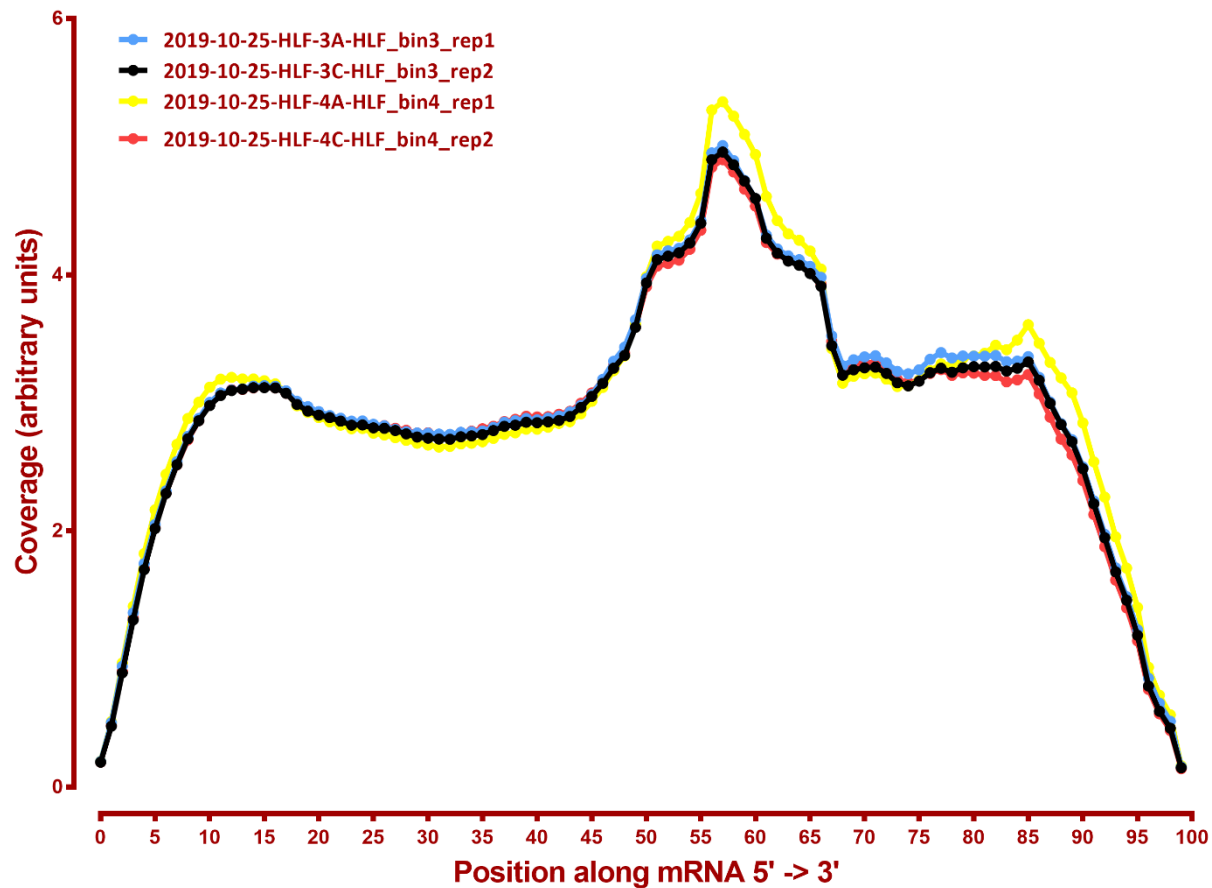
Coverage of genes; >1000bp, dm6



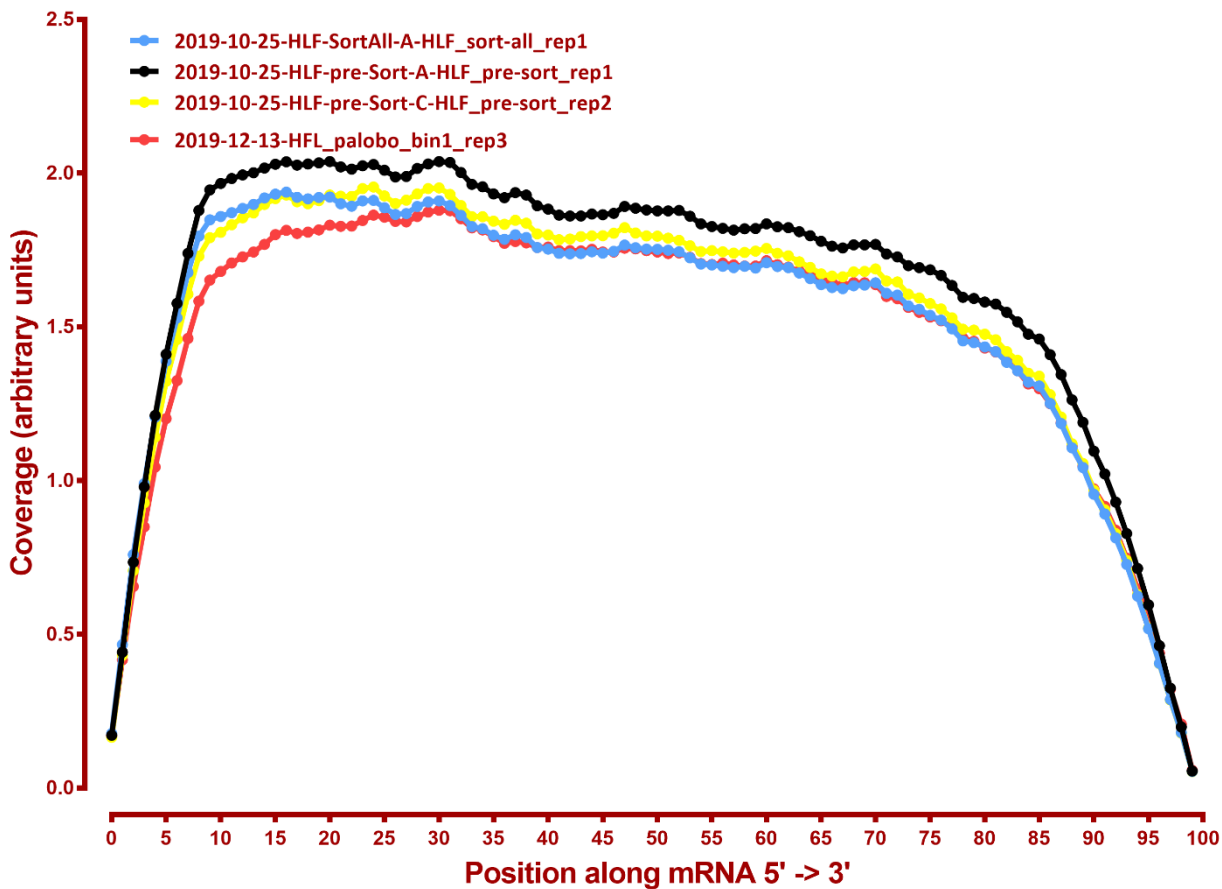
Coverage of genes; >1000bp, hg38



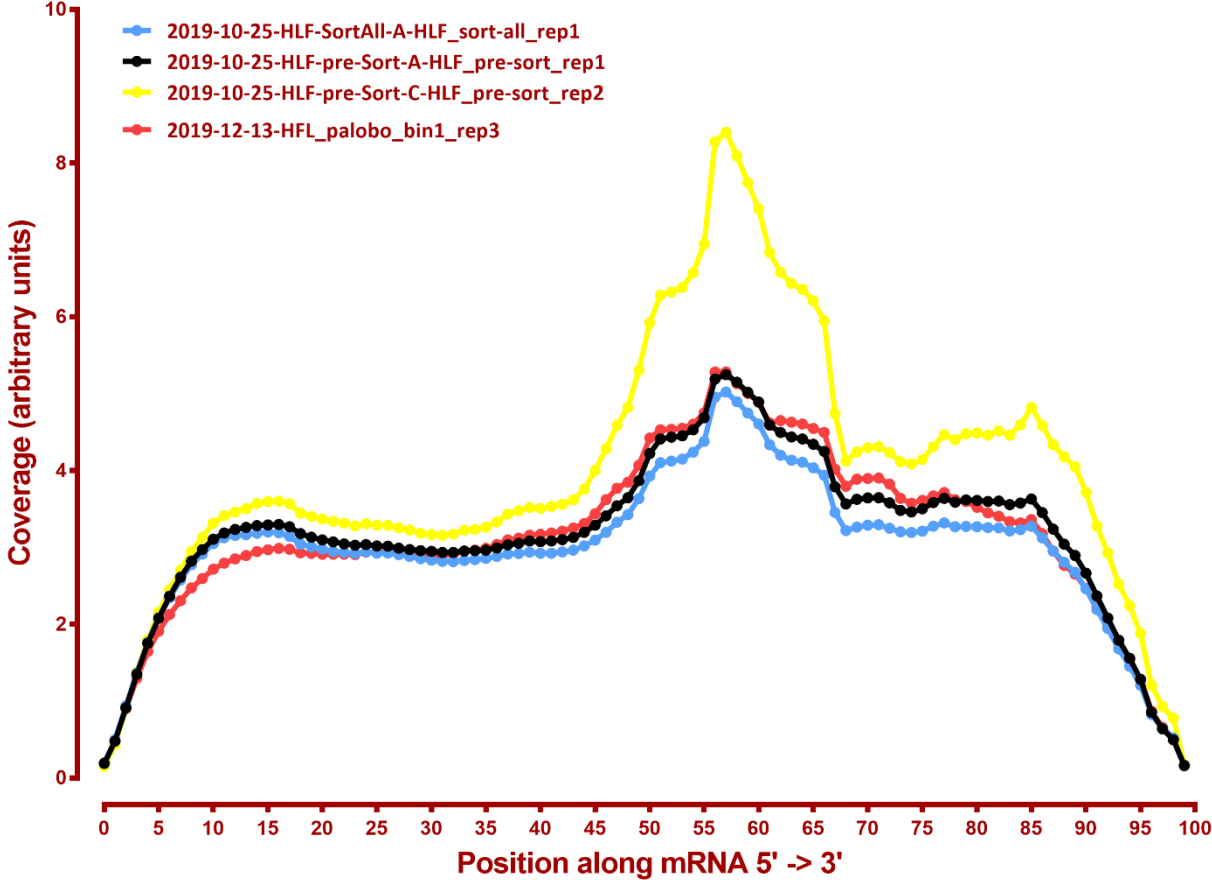
Coverage of genes; >1000bp, dm6



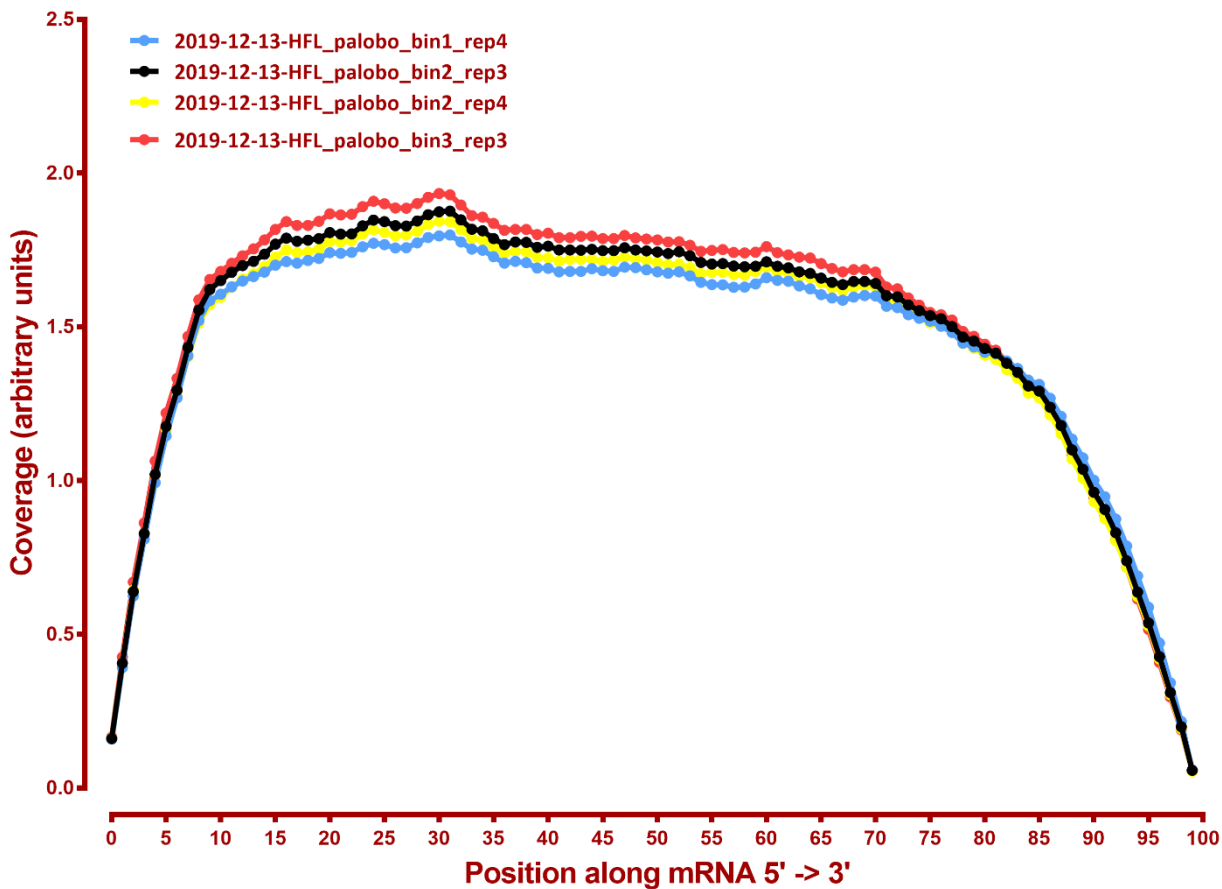
Coverage of genes; >1000bp, hg38



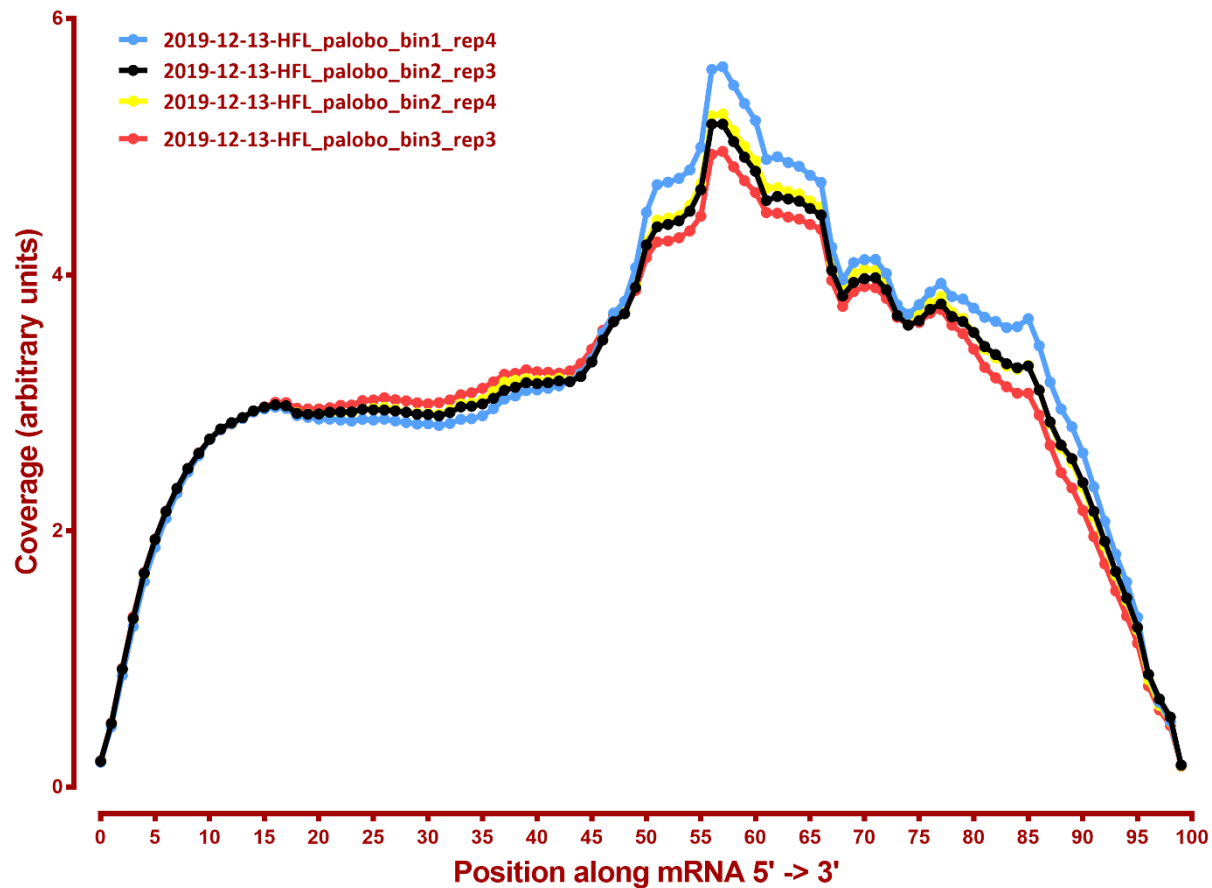
Coverage of genes; >1000bp, dm6



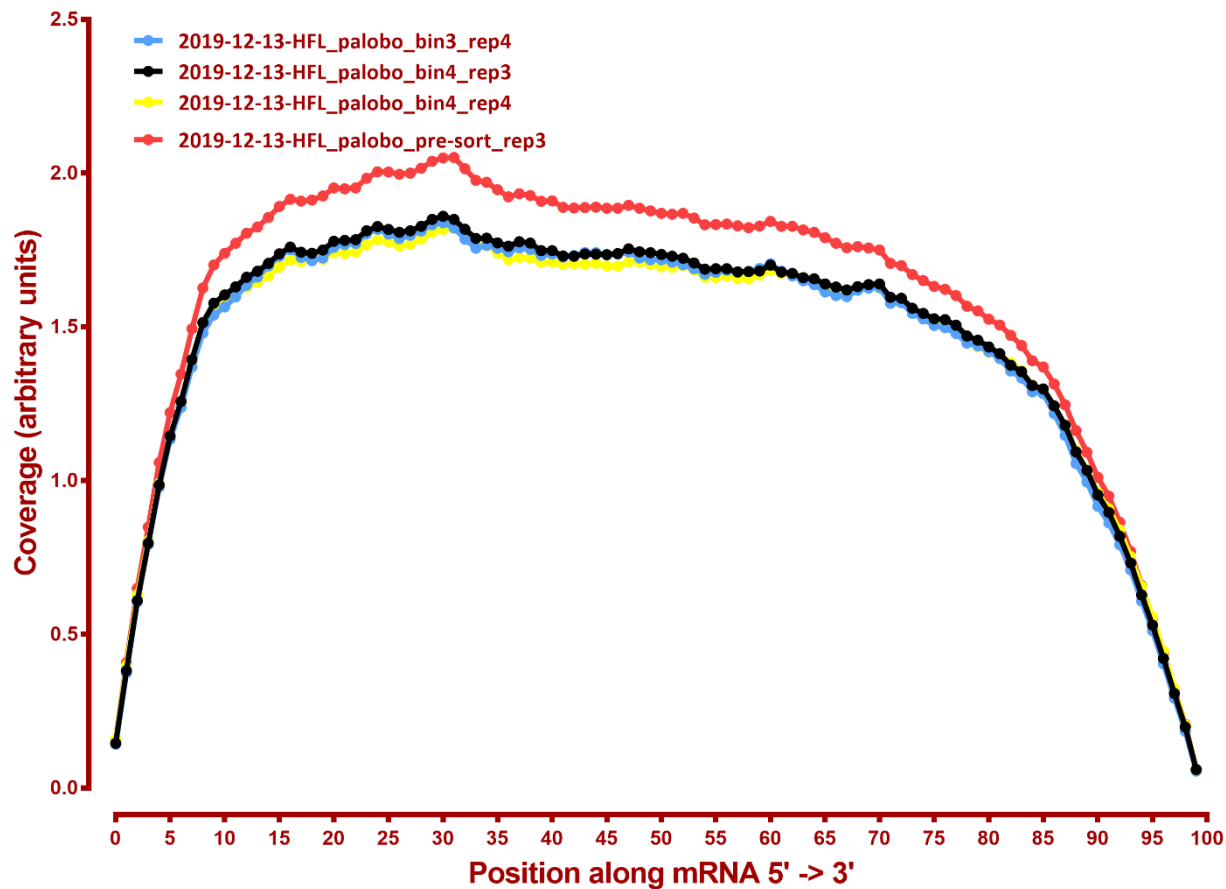
Coverage of genes; >1000bp, hg38



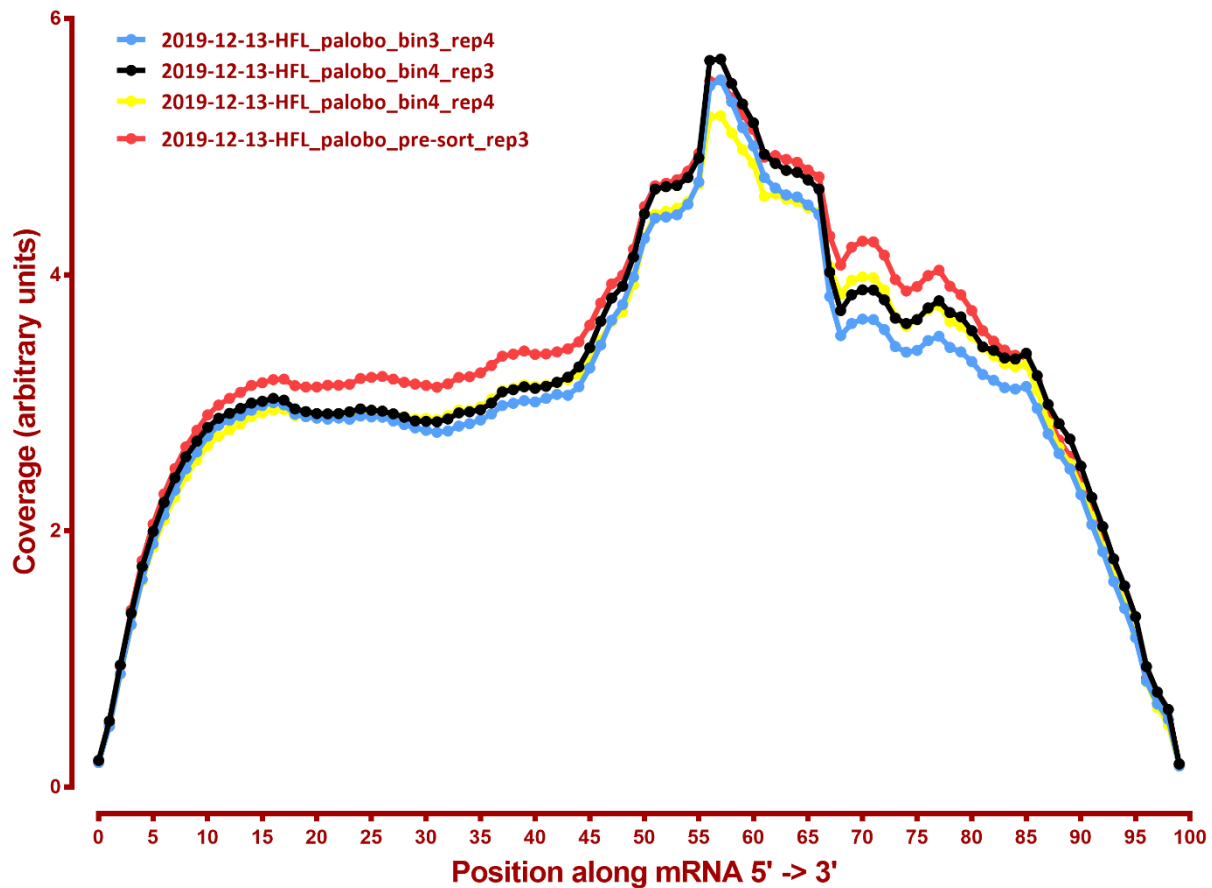
Coverage of genes; >1000bp, dm6



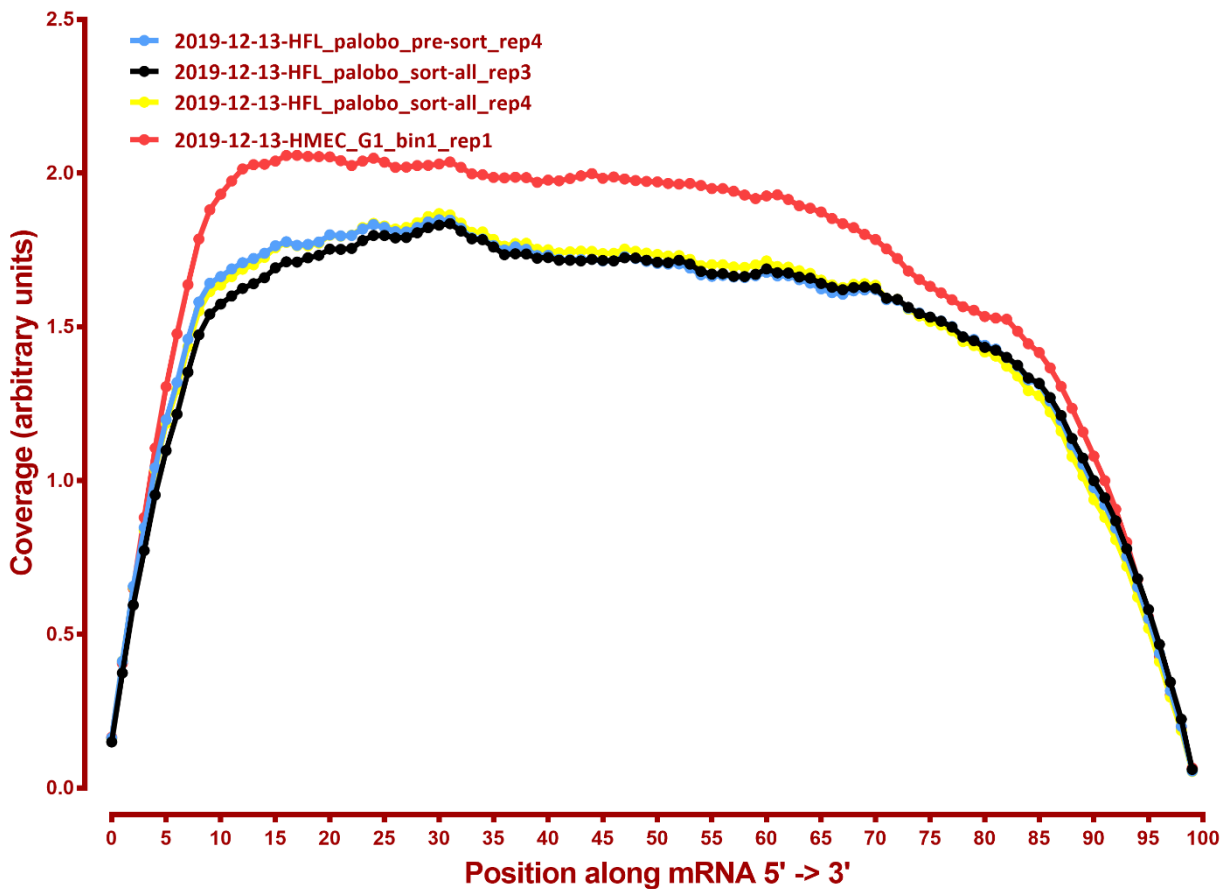
Coverage of genes; >1000bp, hg38



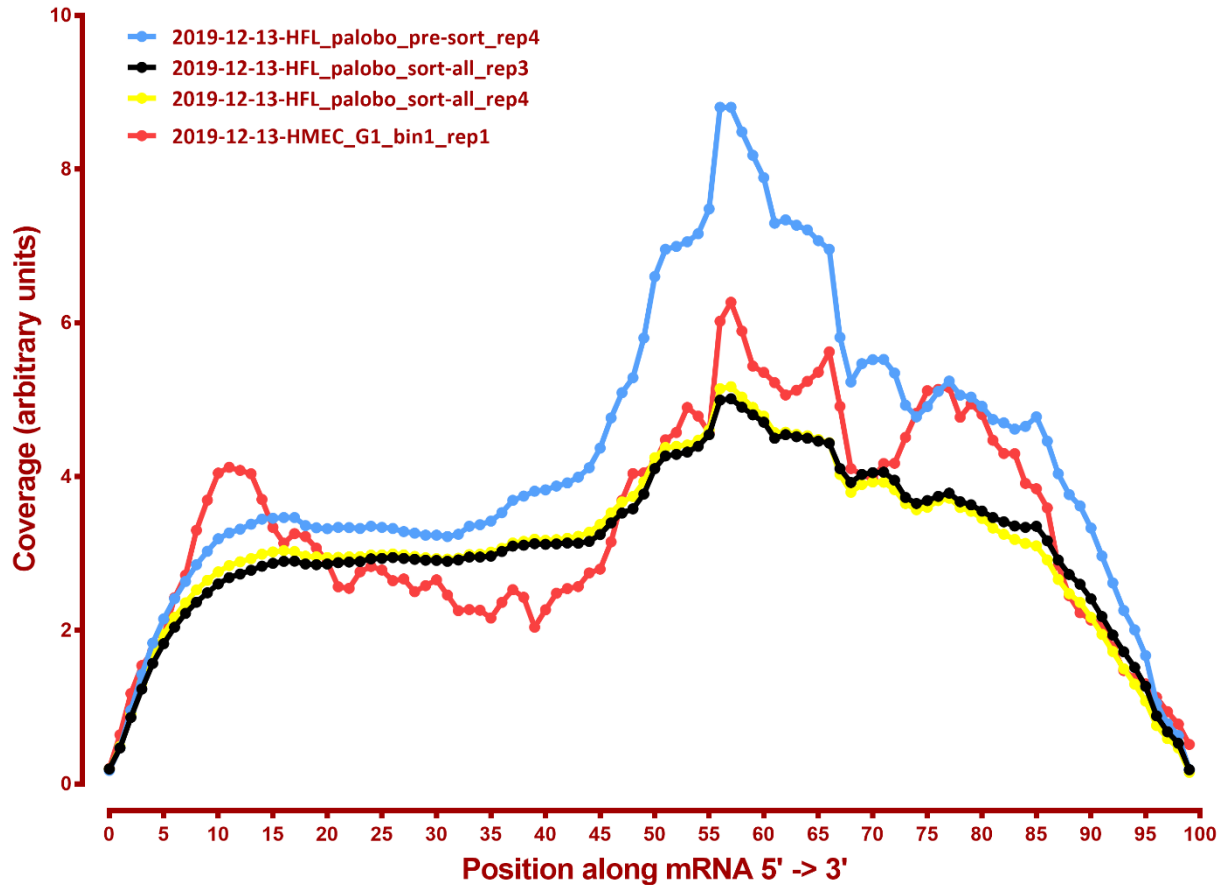
Coverage of genes; >1000bp, dm6



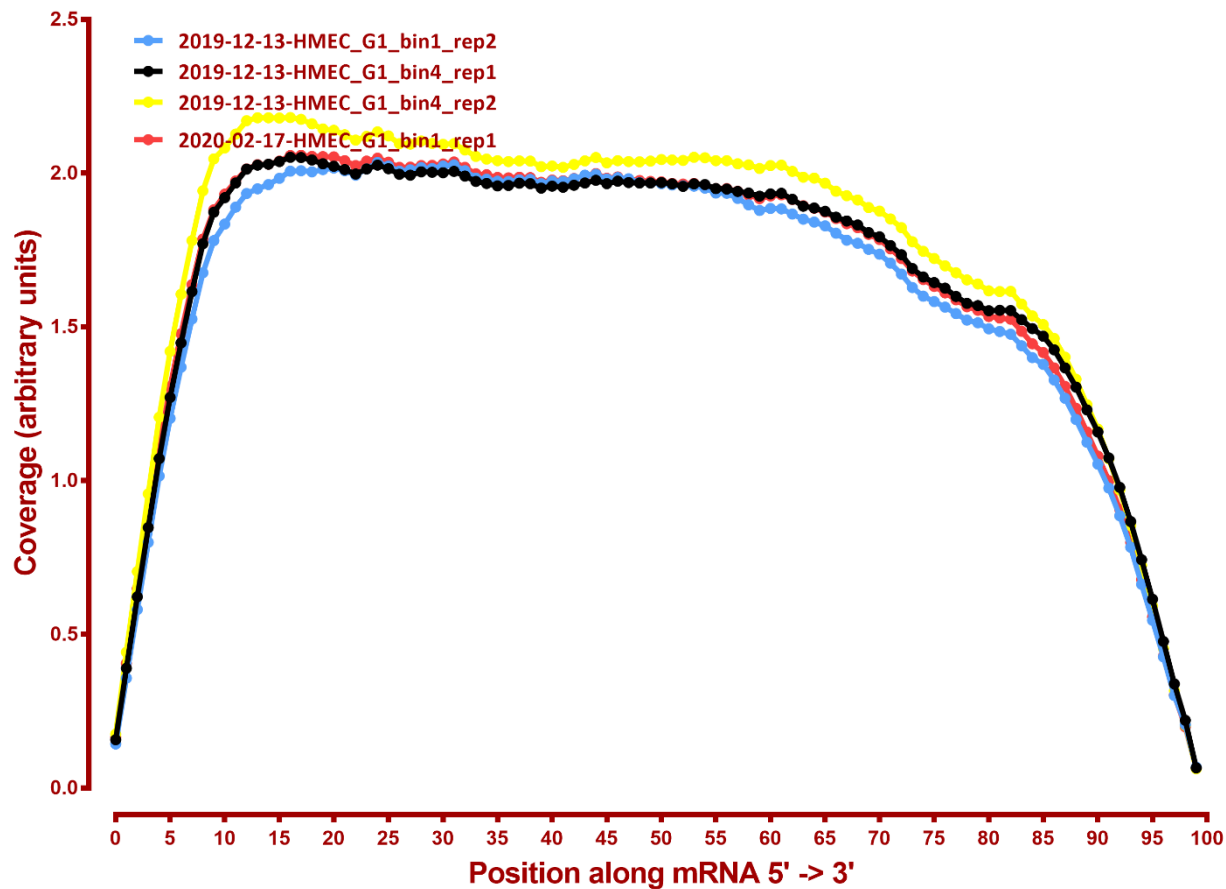
Coverage of genes; >1000bp, hg38



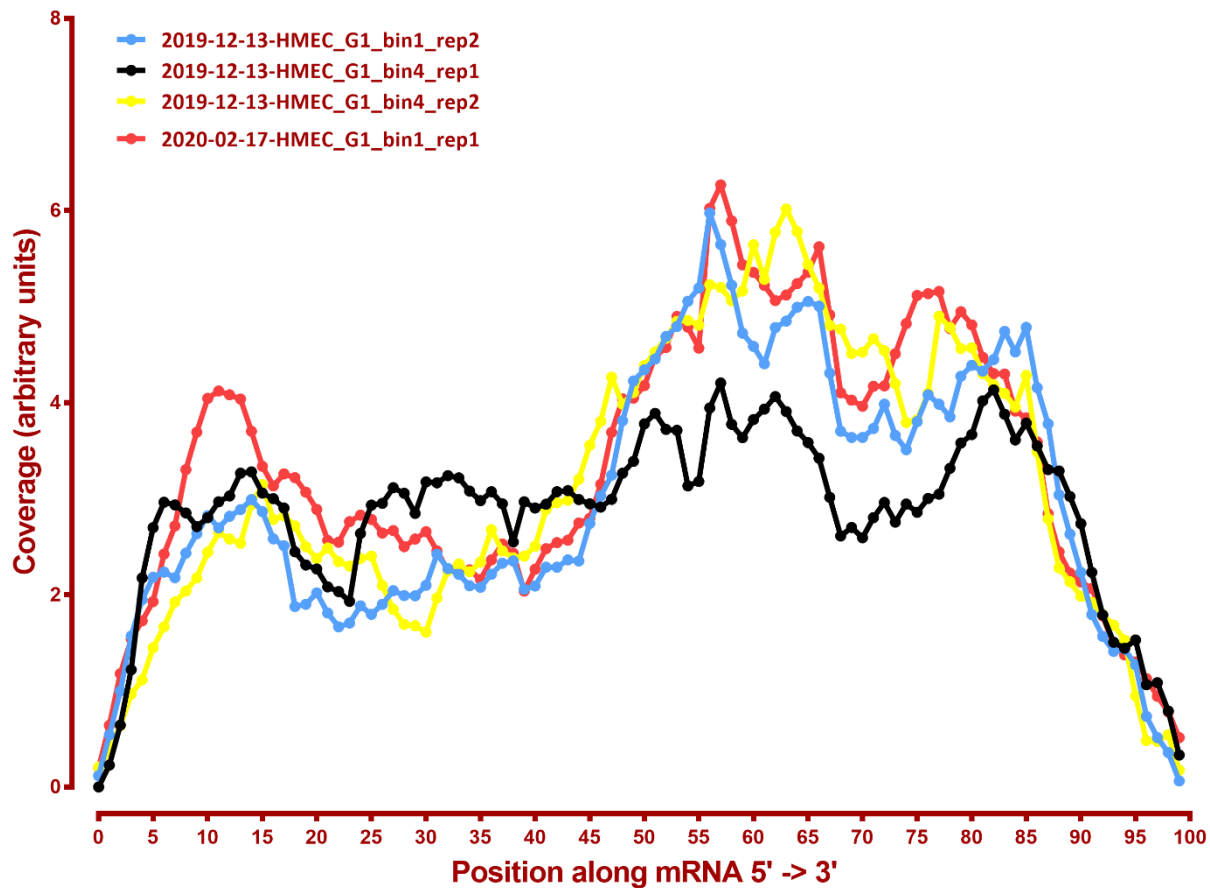
Coverage of genes; >1000bp, dm6



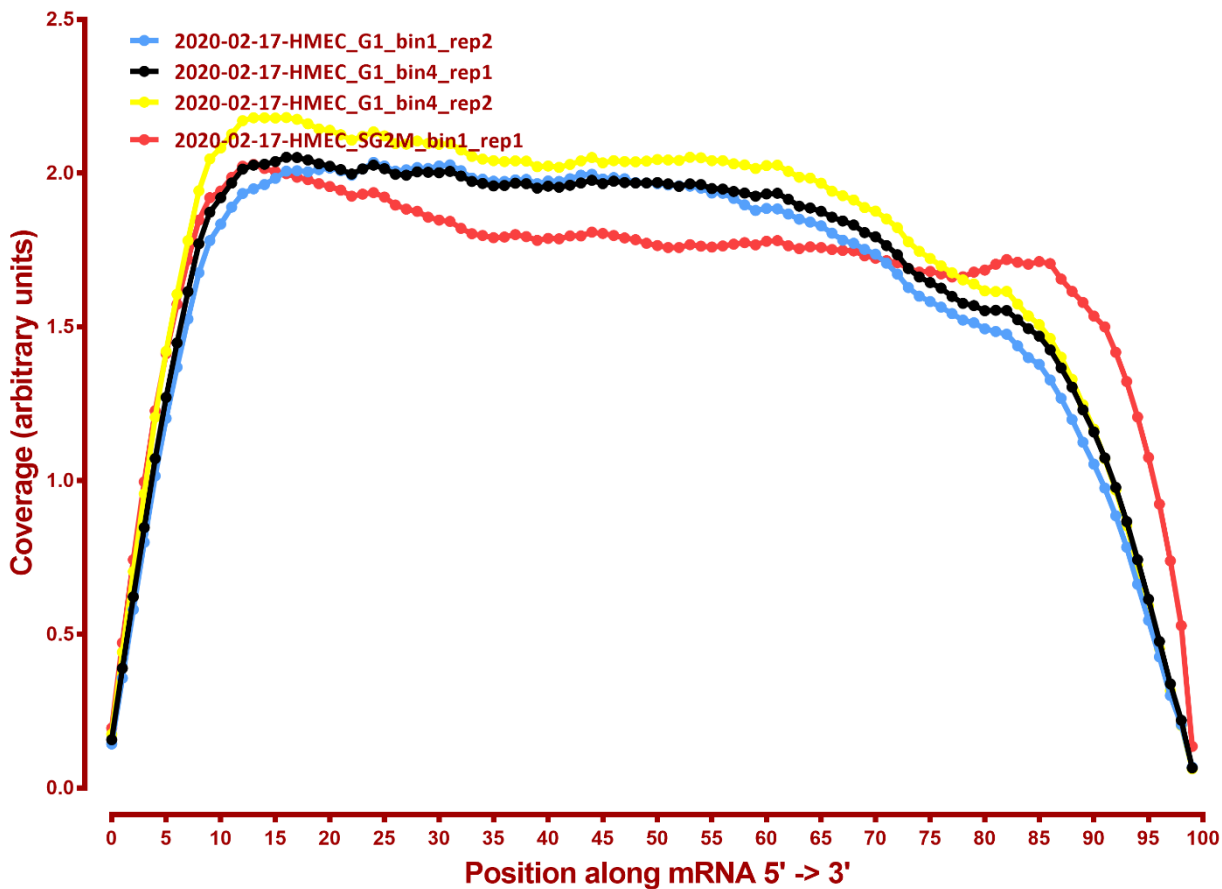
Coverage of genes; >1000bp, hg38



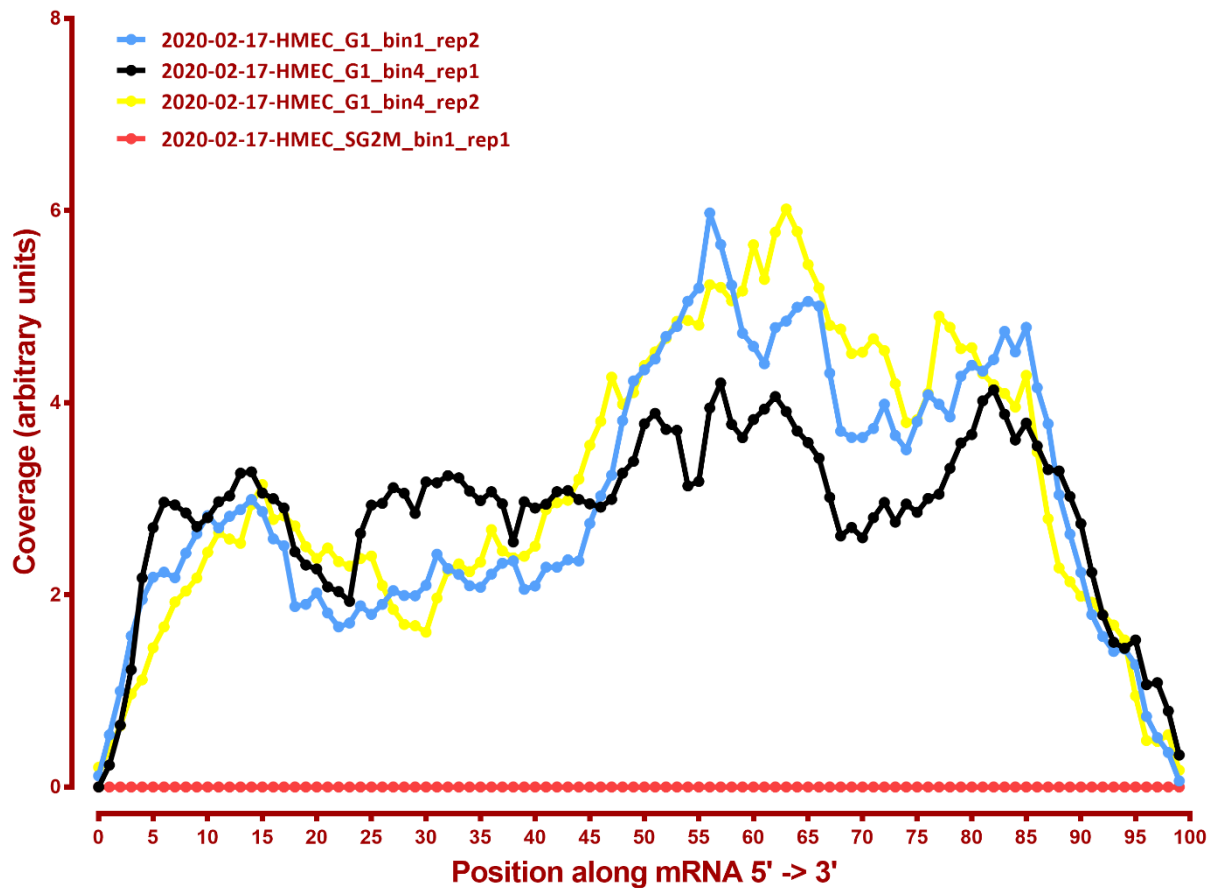
Coverage of genes; >1000bp, dm6



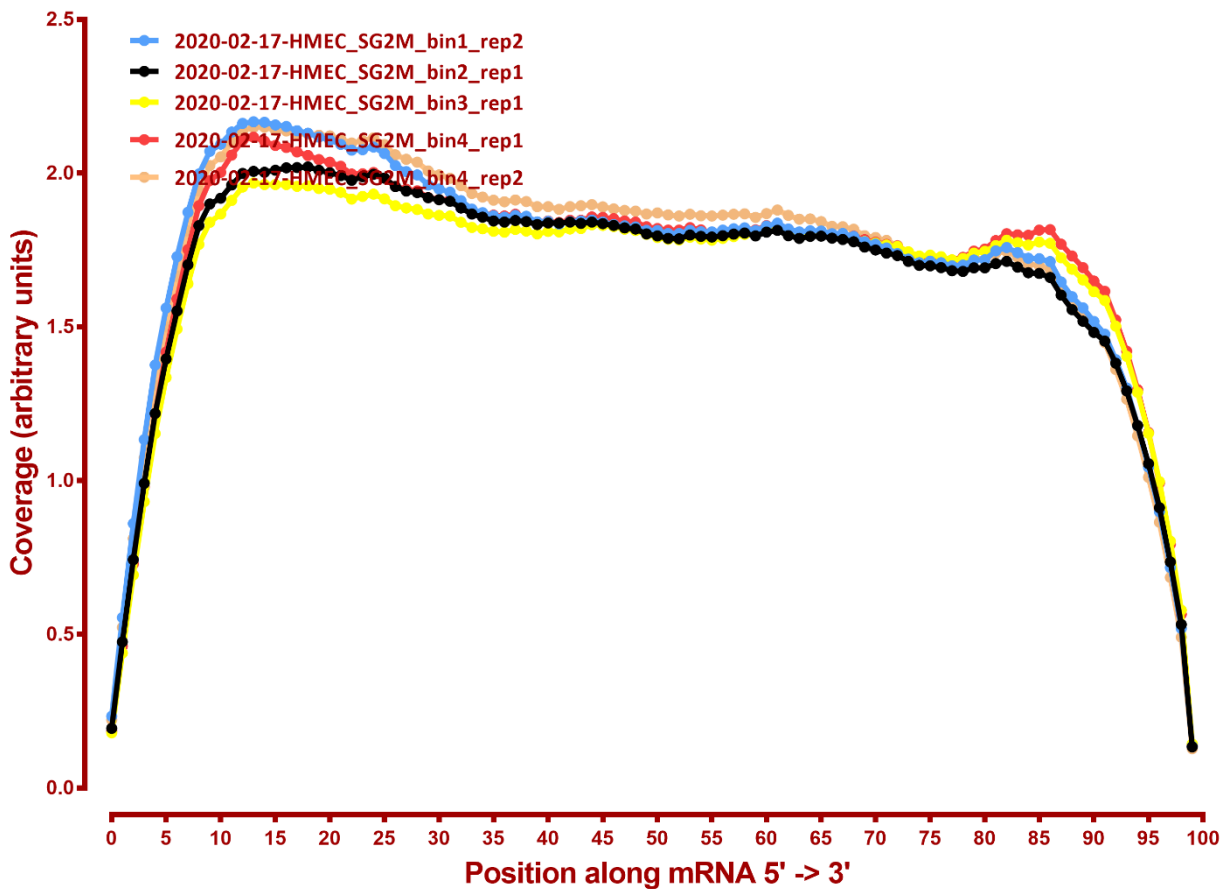
Coverage of genes; >1000bp, hg38



Coverage of genes; >1000bp, dm6



Coverage of genes; >1000bp, hg38



Coverage of genes; >1000bp, dm6

