

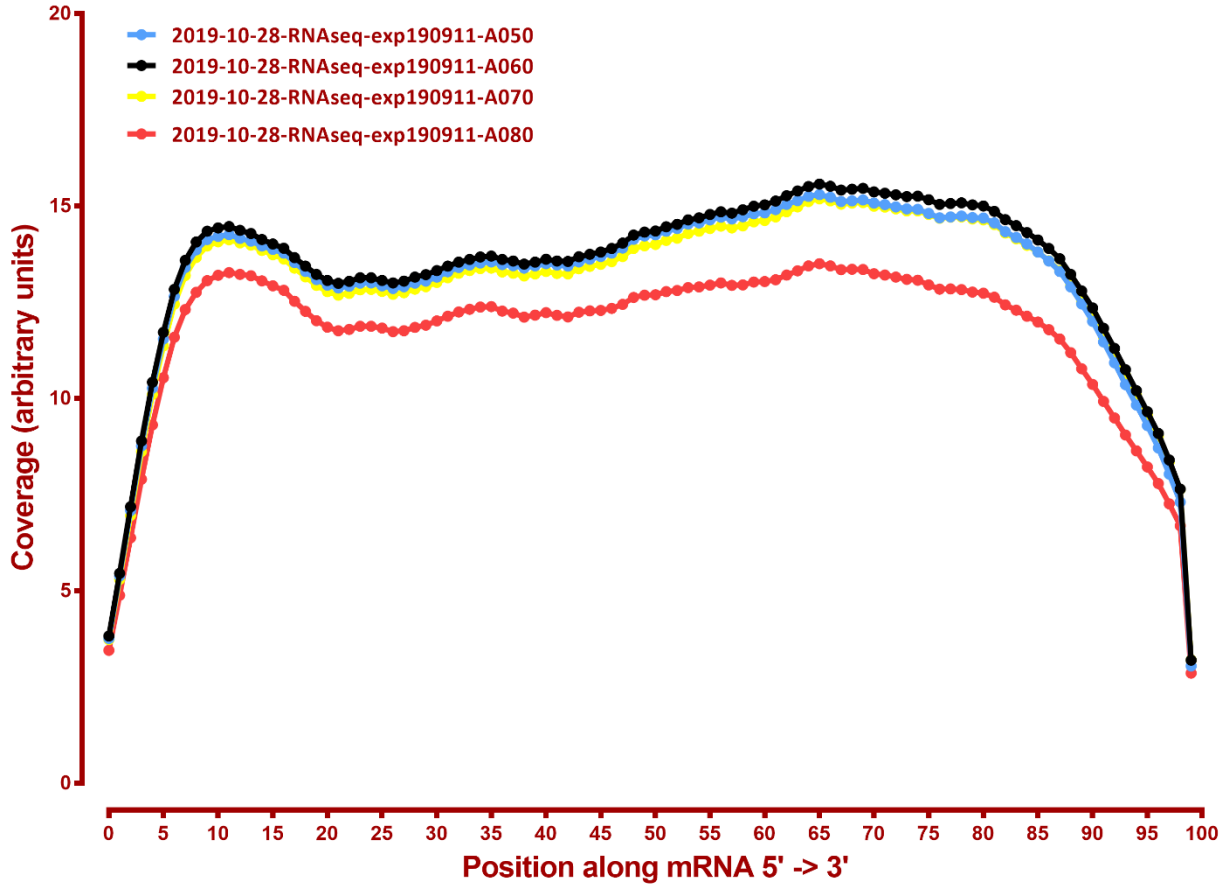
MAPPING STATS

Library	Read Length	Mapping	Species	Raw fragments	Complexity	Unique	Unique Splices	Multi	Multi Splices	Fraction mapped
2019-10-28-RNAseq-exp190911-A050	2x150	STAR-2.5.3a	S_pombe	21,159,087	1.00	2	0	286	2	0.00
2019-10-28-RNAseq-exp190911-A050	2x150	STAR-2.5.3a	sacCer3	21,159,087	0.44	31,991,977	833,699	2,103,821	123,373	0.83
2019-10-28-RNAseq-exp190911-A060	2x150	STAR-2.5.3a	S_pombe	23,655,415	0.60	2	4	422	0	0.00
2019-10-28-RNAseq-exp190911-A060	2x150	STAR-2.5.3a	sacCer3	23,655,415	0.44	35,746,912	888,580	2,295,076	135,898	0.83
2019-10-28-RNAseq-exp190911-A070	2x150	STAR-2.5.3a	S_pombe	22,210,018	1.00	2	0	260	2	0.00
2019-10-28-RNAseq-exp190911-A070	2x150	STAR-2.5.3a	sacCer3	22,210,018	0.44	33,708,066	879,284	2,009,016	126,802	0.83
2019-10-28-RNAseq-exp190911-A080	2x150	STAR-2.5.3a	S_pombe	21,210,195	1.00	4	0	252	0	0.00
2019-10-28-RNAseq-exp190911-A080	2x150	STAR-2.5.3a	sacCer3	21,210,195	0.42	31,506,824	1,039,616	1,646,110	114,852	0.81
2019-10-28-RNAseq-exp190911-A090	2x150	STAR-2.5.3a	S_pombe	20,006,638	1.00	2	0	467	1	0.00
2019-10-28-RNAseq-exp190911-A090	2x150	STAR-2.5.3a	sacCer3	20,006,638	0.43	29,459,735	921,147	1,681,415	115,925	0.80
2019-10-28-RNAseq-exp190911-A100	2x150	STAR-2.5.3a	S_pombe	19,978,254	1.00	6	0	214	0	0.00
2019-10-28-RNAseq-exp190911-A100	2x150	STAR-2.5.3a	sacCer3	19,978,254	0.41	29,893,419	964,573	1,616,337	148,095	0.82
2019-10-28-RNAseq-exp190911-A110	2x150	STAR-2.5.3a	S_pombe	22,219,050	1.00	5	1	382	0	0.00
2019-10-28-RNAseq-exp190911-A110	2x150	STAR-2.5.3a	sacCer3	22,219,050	0.42	33,654,368	891,210	1,964,767	128,065	0.82
2019-10-28-RNAseq-exp190911-A120	2x150	STAR-2.5.3a	S_pombe	23,161,998	1.00	6	0	448	0	0.00
2019-10-28-RNAseq-exp190911-A120	2x150	STAR-2.5.3a	sacCer3	23,161,998	0.42	34,961,805	870,837	2,130,905	154,059	0.82
2019-10-28-RNAseq-exp190911-B010	2x150	STAR-2.5.3a	S_pombe	18,755,308	1.00	4	0	340	0	0.00
2019-10-28-RNAseq-exp190911-B010	2x150	STAR-2.5.3a	sacCer3	18,755,308	0.47	28,373,199	642,491	2,023,260	107,636	0.83
2019-10-28-RNAseq-exp190911-B020	2x150	STAR-2.5.3a	S_pombe	21,265,174	1.00	4	0	316	0	0.00
2019-10-28-RNAseq-exp190911-B020	2x150	STAR-2.5.3a	sacCer3	21,265,174	0.44	31,624,148	830,198	2,284,804	113,924	0.82
2019-10-28-RNAseq-exp190911-B030	2x150	STAR-2.5.3a	S_pombe	21,216,489	1.00	7	3	232	0	0.00
2019-10-28-RNAseq-exp190911-B030	2x150	STAR-2.5.3a	sacCer3	21,216,489	0.43	31,778,451	927,021	2,203,544	126,888	0.83
2019-10-28-RNAseq-exp190911-B040	2x150	STAR-2.5.3a	S_pombe	20,071,883	1.00	2	0	288	0	0.00
2019-10-28-RNAseq-exp190911-B040	2x150	STAR-2.5.3a	sacCer3	20,071,883	0.44	29,895,622	879,042	1,971,082	117,532	0.82
2019-10-28-RNAseq-exp190911-B050	2x150	STAR-2.5.3a	S_pombe	21,987,557	1.00	4	0	386	0	0.00
2019-10-28-RNAseq-exp190911-B050	2x150	STAR-2.5.3a	sacCer3	21,987,557	0.43	33,005,507	916,111	2,103,747	122,241	0.82
2019-10-28-RNAseq-exp190911-B060	2x150	STAR-2.5.3a	S_pombe	18,599,680	1.00	6	0	230	0	0.00
2019-10-28-RNAseq-exp190911-B060	2x150	STAR-2.5.3a	sacCer3	18,599,680	0.44	28,102,106	797,206	1,735,955	110,891	0.83
2019-10-28-RNAseq-exp190911-B070	2x150	STAR-2.5.3a	S_pombe	18,142,904	1.00	7	1	350	0	0.00
2019-10-28-RNAseq-exp190911-B070	2x150	STAR-2.5.3a	sacCer3	18,142,904	0.43	27,384,049	763,333	1,740,087	108,529	0.83
2019-10-28-RNAseq-exp190911-B080	2x150	STAR-2.5.3a	S_pombe	21,198,426	0.81	8	4	562	0	0.00
2019-10-28-RNAseq-exp190911-B080	2x150	STAR-2.5.3a	sacCer3	21,198,426	0.42	31,849,884	882,176	2,067,062	125,542	0.82
2019-10-28-RNAseq-exp190911-C0	2x150	STAR-2.5.3a	S_pombe	19,978,077	1.00	2	0	358	0	0.00
2019-10-28-RNAseq-exp190911-C0	2x150	STAR-2.5.3a	sacCer3	19,978,077	0.47	29,703,680	558,242	3,062,599	159,529	0.84
2019-10-28-RNAseq-exp190911-C010	2x150	STAR-2.5.3a	S_pombe	23,254,122	1.00	9	1	296	0	0.00
2019-10-28-RNAseq-exp190911-C010	2x150	STAR-2.5.3a	sacCer3	23,254,122	0.45	34,047,796	776,830	3,107,394	156,642	0.82
2019-10-28-RNAseq-exp190911-C020	2x150	STAR-2.5.3a	S_pombe	21,202,703	1.00	3	1	398	0	0.00
2019-10-28-RNAseq-exp190911-C020	2x150	STAR-2.5.3a	sacCer3	21,202,703	0.45	31,447,442	701,458	2,886,091	142,861	0.83
2019-10-28-RNAseq-exp190911-C030	2x150	STAR-2.5.3a	S_pombe	23,104,055	1.00	4	0	440	0	0.00
2019-10-28-RNAseq-exp190911-C030	2x150	STAR-2.5.3a	sacCer3	23,104,055	0.44	33,887,097	846,823	2,808,917	142,443	0.82
2019-10-28-RNAseq-exp190911-C040	2x150	STAR-2.5.3a	S_pombe	20,231,168	1.00	10	0	280	4	0.00
2019-10-28-RNAseq-exp190911-C040	2x150	STAR-2.5.3a	sacCer3	20,231,168	0.44	30,274,239	808,641	2,141,880	113,284	0.82
2019-10-28-RNAseq-exp190911-C050	2x150	STAR-2.5.3a	S_pombe	19,349,220	0.50	3	7	422	0	0.00
2019-10-28-RNAseq-exp190911-C050	2x150	STAR-2.5.3a	sacCer3	19,349,220	0.45	29,191,579	701,041	2,076,710	94,980	0.83
2019-10-28-RNAseq-exp190911-C060	2x150	STAR-2.5.3a	S_pombe	20,177,373	1.00	4	0	397	1	0.00
2019-10-28-RNAseq-exp190911-C060	2x150	STAR-2.5.3a	sacCer3	20,177,373	0.44	30,795,560	791,414	2,174,536	125,130	0.84
2019-10-28-RNAseq-exp190911-C070	2x150	STAR-2.5.3a	S_pombe	22,105,201	1.00	2	0	308	0	0.00
2019-10-28-RNAseq-exp190911-C070	2x150	STAR-2.5.3a	sacCer3	22,105,201	0.41	33,406,318	999,188	2,351,532	144,994	0.83

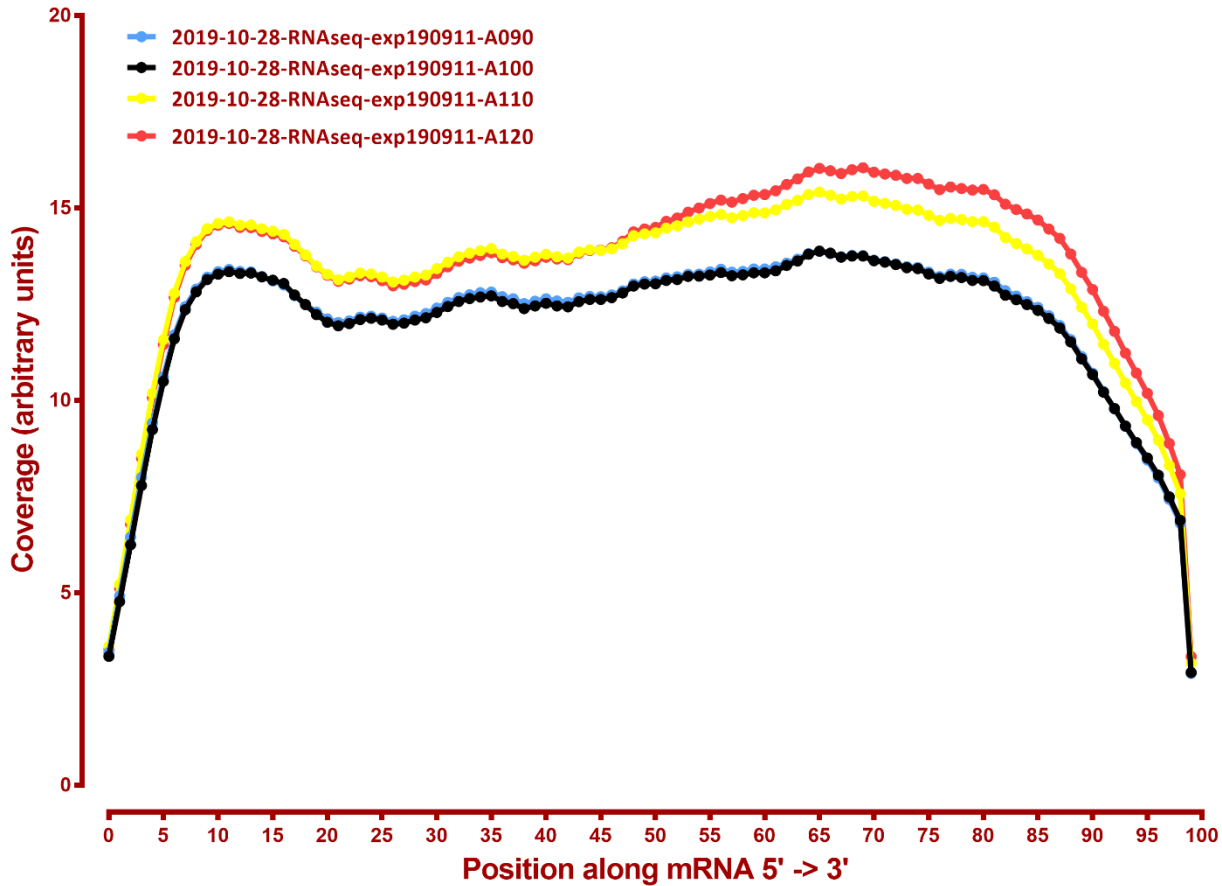
READ DISTRIBUTION

#	Exonic:	Intergenic:	Intronic:
2019-10-28-RNAseq-exp190911-A050	0.93	0.07	0.00
2019-10-28-RNAseq-exp190911-A060	0.93	0.07	0.00
2019-10-28-RNAseq-exp190911-A070	0.93	0.07	0.00
2019-10-28-RNAseq-exp190911-A080	0.92	0.08	0.00
2019-10-28-RNAseq-exp190911-A090	0.92	0.07	0.00
2019-10-28-RNAseq-exp190911-A100	0.92	0.07	0.00
2019-10-28-RNAseq-exp190911-A110	0.93	0.07	0.00
2019-10-28-RNAseq-exp190911-A120	0.93	0.07	0.00
2019-10-28-RNAseq-exp190911-B010	0.92	0.07	0.00
2019-10-28-RNAseq-exp190911-B020	0.92	0.07	0.00
2019-10-28-RNAseq-exp190911-B030	0.93	0.07	0.00
2019-10-28-RNAseq-exp190911-B040	0.93	0.07	0.00
2019-10-28-RNAseq-exp190911-B050	0.93	0.07	0.00
2019-10-28-RNAseq-exp190911-B060	0.93	0.07	0.00
2019-10-28-RNAseq-exp190911-B070	0.93	0.07	0.00
2019-10-28-RNAseq-exp190911-B080	0.93	0.07	0.00
2019-10-28-RNAseq-exp190911-C0	0.92	0.08	0.00
2019-10-28-RNAseq-exp190911-C010	0.92	0.08	0.00
2019-10-28-RNAseq-exp190911-C020	0.93	0.07	0.00
2019-10-28-RNAseq-exp190911-C030	0.93	0.07	0.00
2019-10-28-RNAseq-exp190911-C040	0.92	0.07	0.00
2019-10-28-RNAseq-exp190911-C050	0.93	0.07	0.00
2019-10-28-RNAseq-exp190911-C060	0.93	0.07	0.00
2019-10-28-RNAseq-exp190911-C070	0.93	0.07	0.00

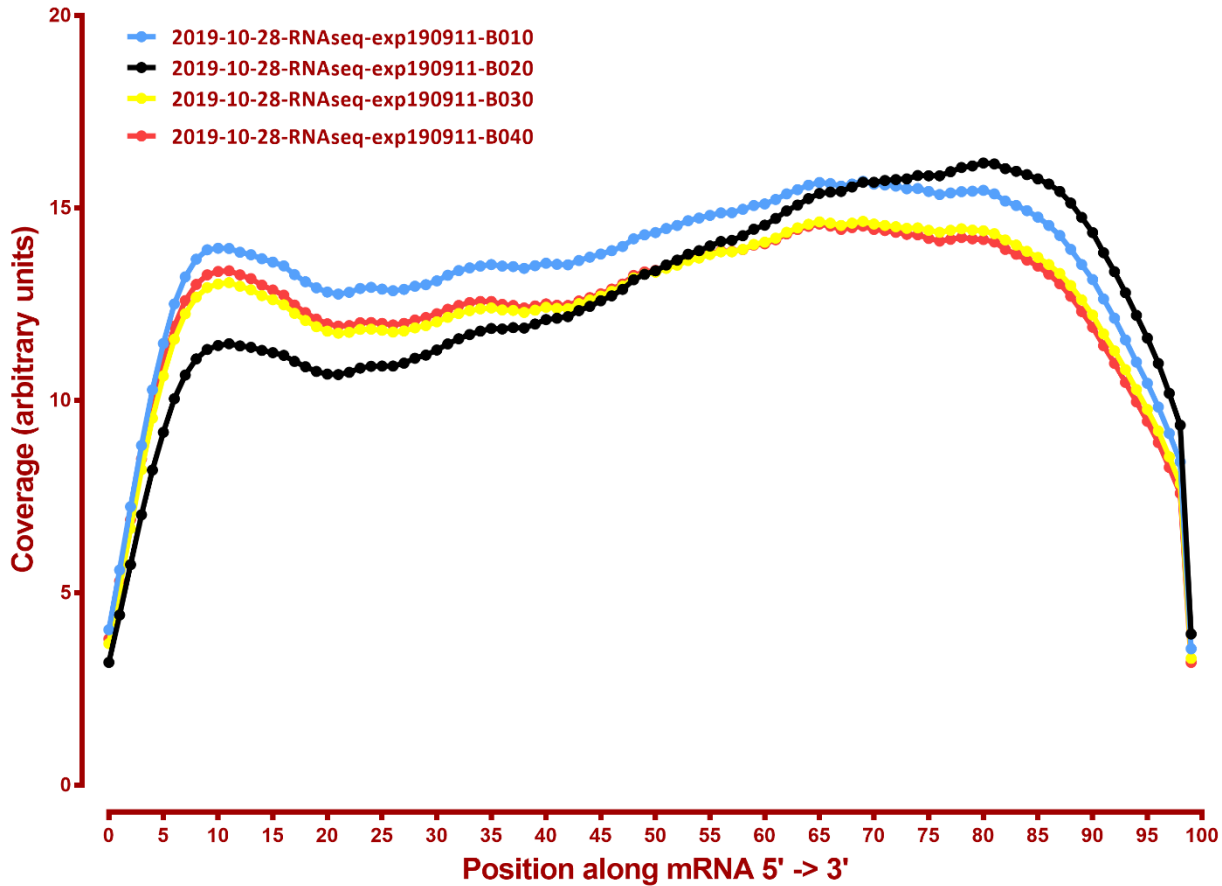
Coverage of genes; >1000bp, sacCer3



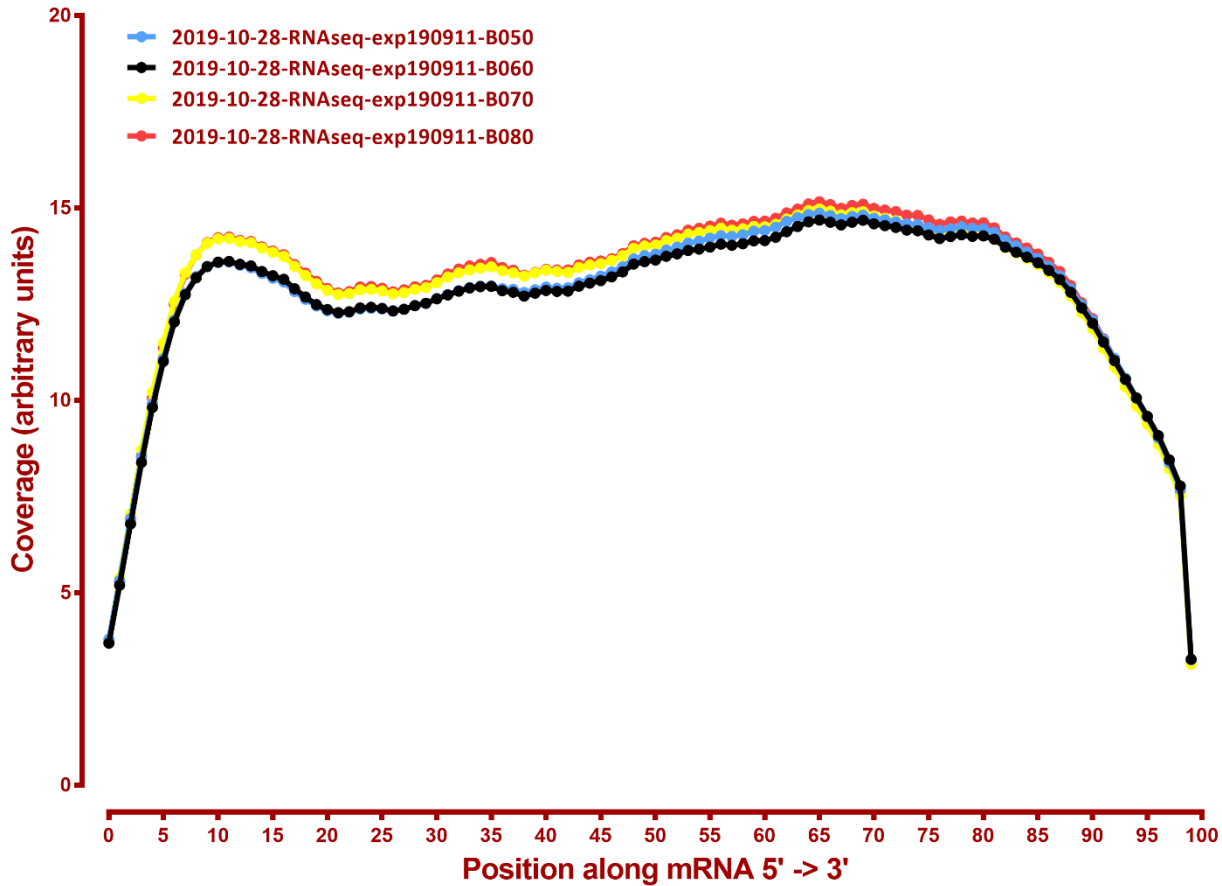
Coverage of genes; >1000bp, sacCer3



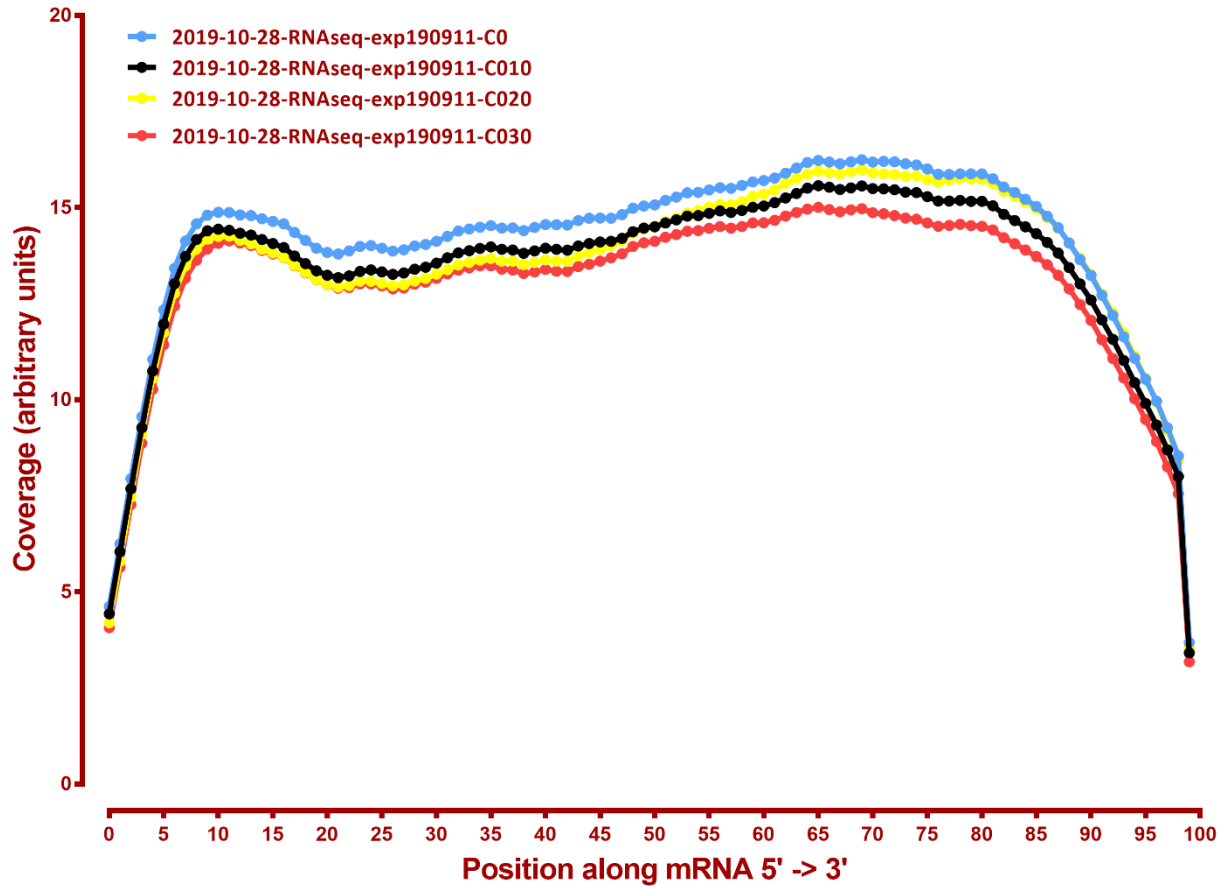
Coverage of genes; >1000bp, sacCer3



Coverage of genes; >1000bp, sacCer3



Coverage of genes; >1000bp, sacCer3



Coverage of genes; >1000bp, sacCer3

