

GENERAL NOTES

- We received samples for *Cercocebus torquatus* and *Chlorocebus pygerythrus*
- We currently have only very fragmented assemblies for both:
 - N50 values in the 10-30 kb range
 - lack of proper annotation
- Initially we didn't even have these, and we were analyzing data against closely related species for which assemblies were available.
- The RNA analysis is particularly affected, keep this in mind for later on.

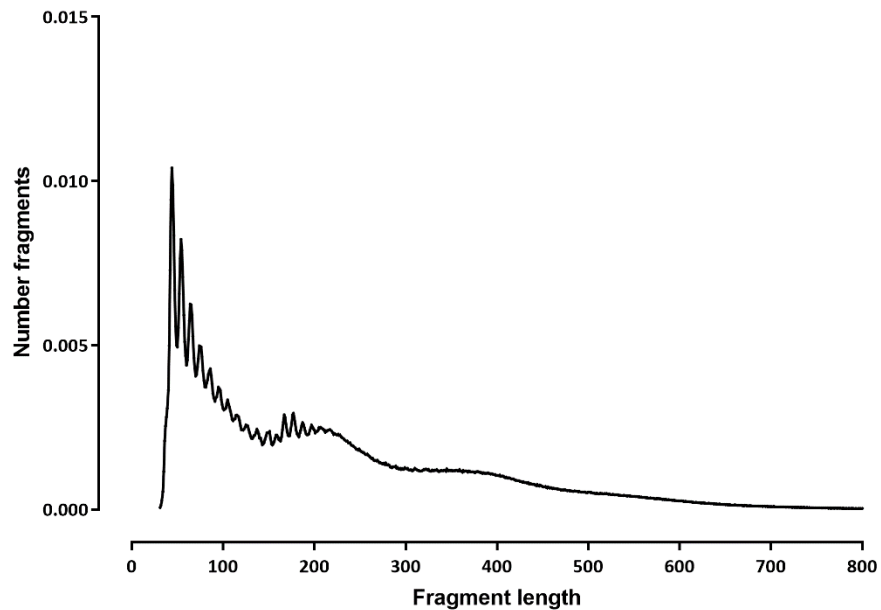
BRAIN LIBRARIES

Datasets ATAC

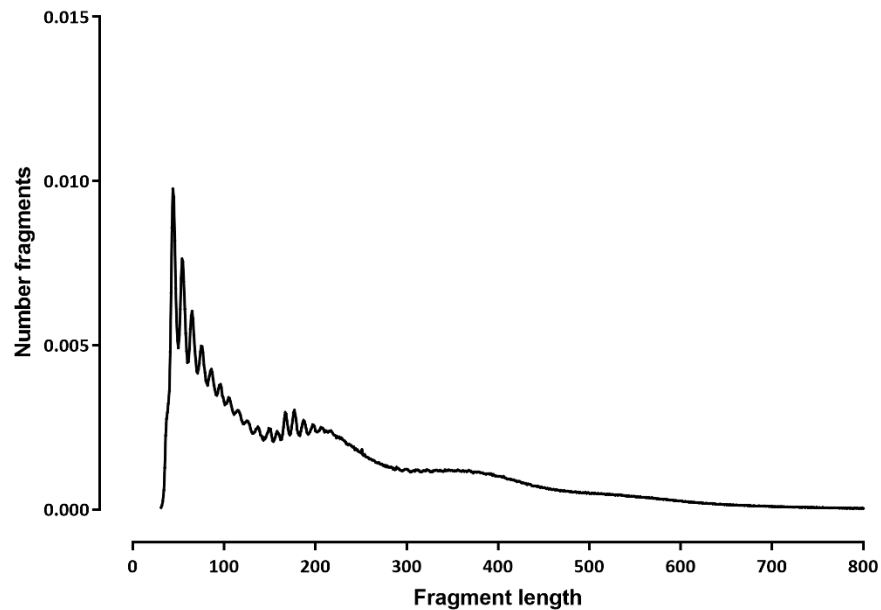
Species	Read Length	Library	Raw fragments	Unique non-chrM reads	Alignment fraction	Complexity	chrM reads	chrM fraction	scATAC dedup reads	scATAC dedup Complexity	TSS ratio	Cells >500 fragments
Cercocebus torquatus-PD_0408	2x30	SK-L308.Mangabey_Cerebellum	55,838,663	86,662,904	0.78	0.33	320,302	0.00	66,004,168	0.42	6.94	3,866
Cercocebus torquatus-PD_0408	2x30	SK-L308.Mangabey_Frontal_Cortex	51,196,797	79,853,688	0.78	0.33	303,284	0.00	60,096,548	0.43	6.97	3,476
Chlorocebus pygerythrus-PD_0173	2x30	SK-L308.Vervet_Cerebellum	51,678,977	79,409,028	0.77	0.33	629,002	0.01	59,649,524	0.43	7.56	3,169
Chlorocebus pygerythrus-PD_0173	2x30	SK-L308.Vervet_Frontal_Cortex	47,535,146	73,263,976	0.78	0.33	611,896	0.01	54,528,696	0.43	7.77	3,379

Fragment length

SK-L308-Cercocebus_torquatus

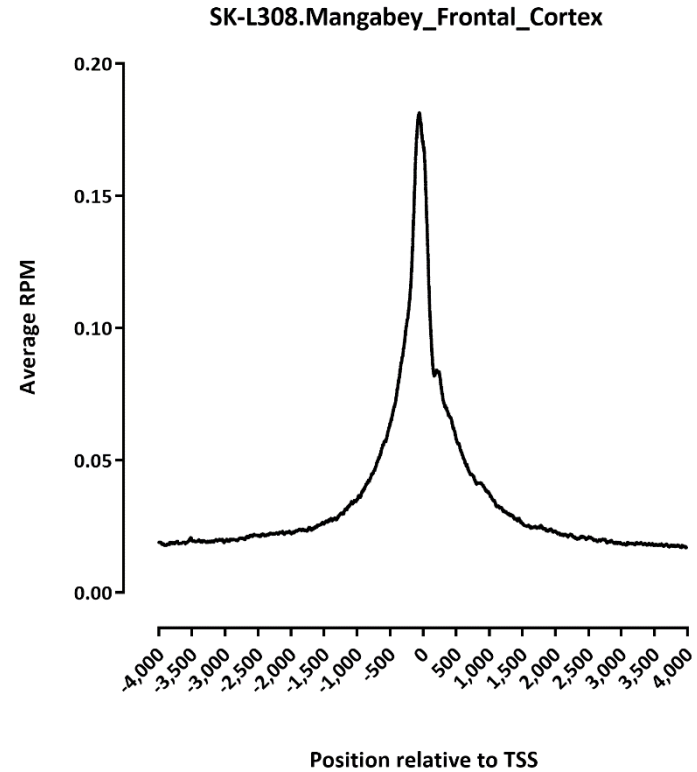
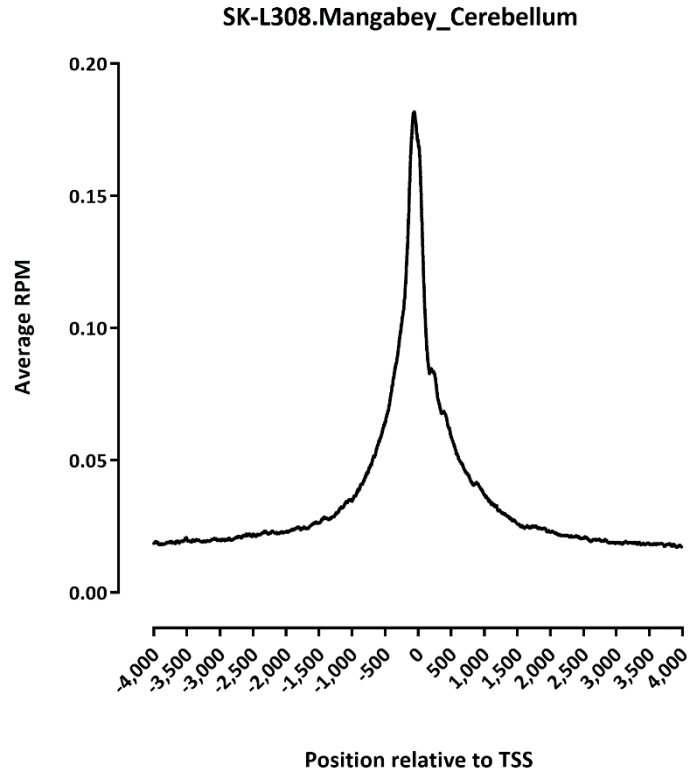


SK-L308-Chlorocebus_pygerythrus



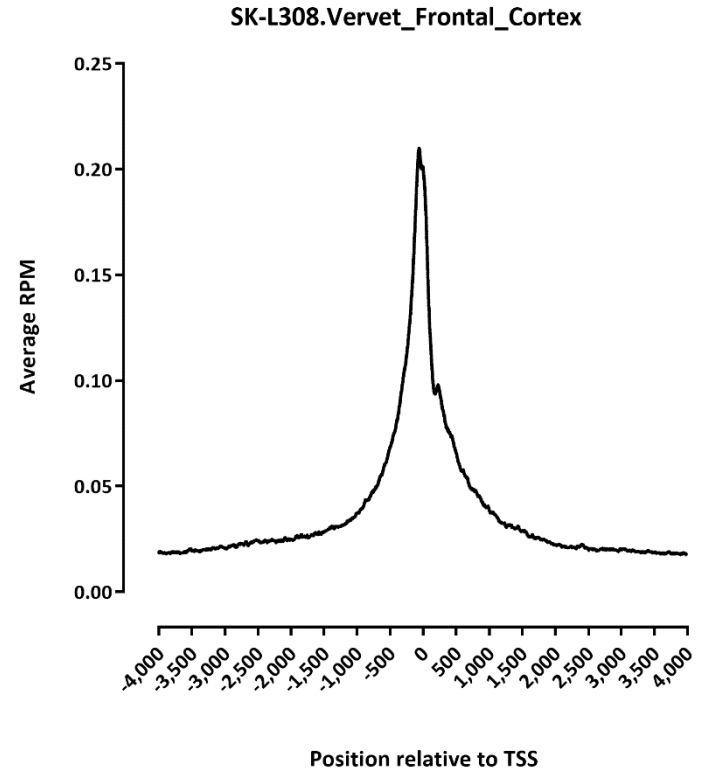
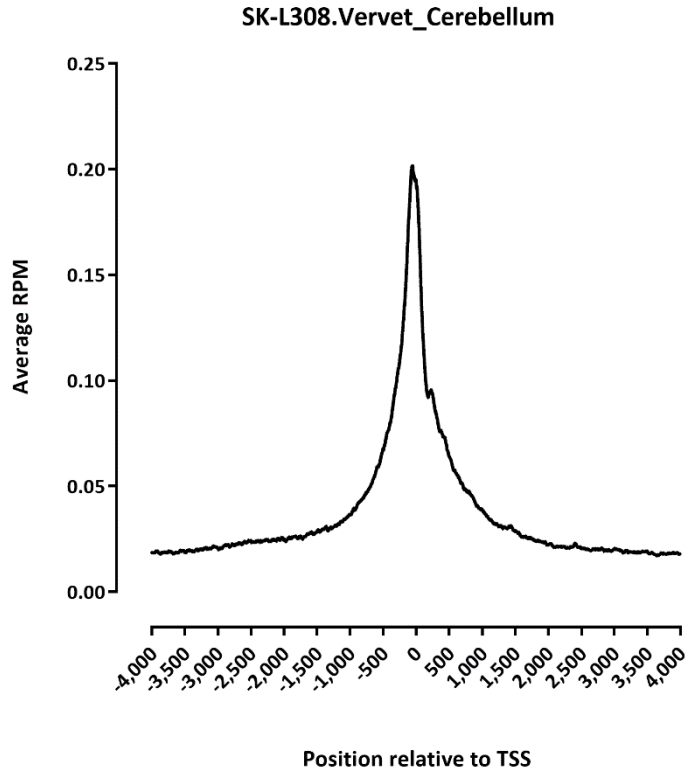
TSS profile

Note: we don't have proper 5'UTR annotations!!!

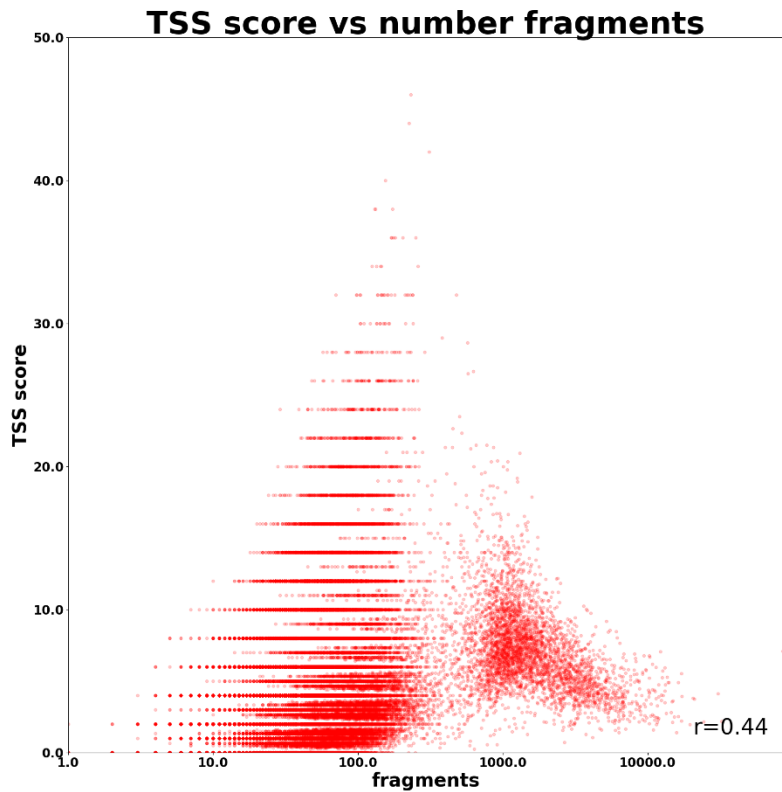


TSS profile

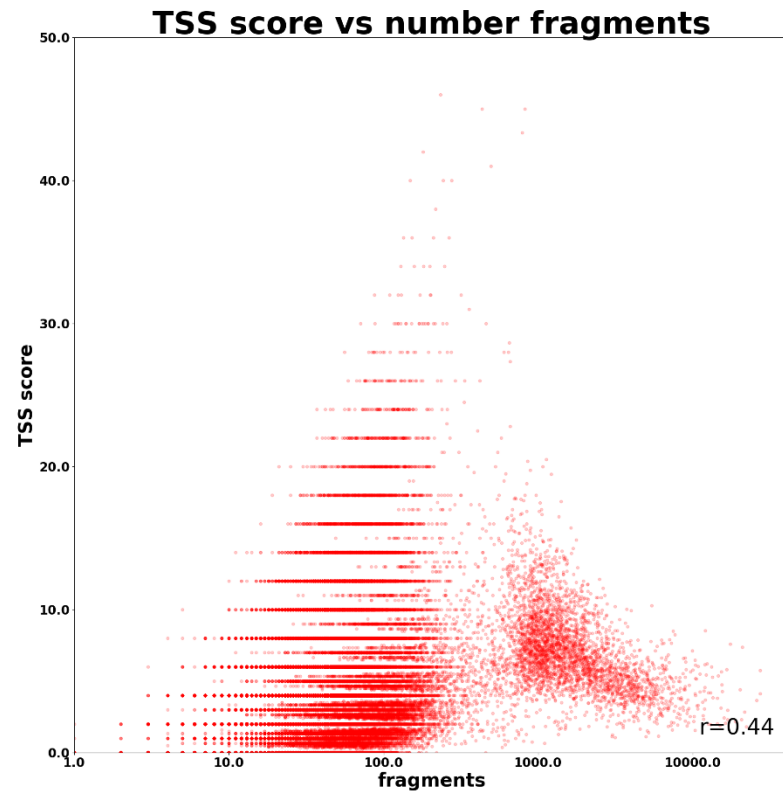
Note: we don't have proper 5'UTR annotations!!!



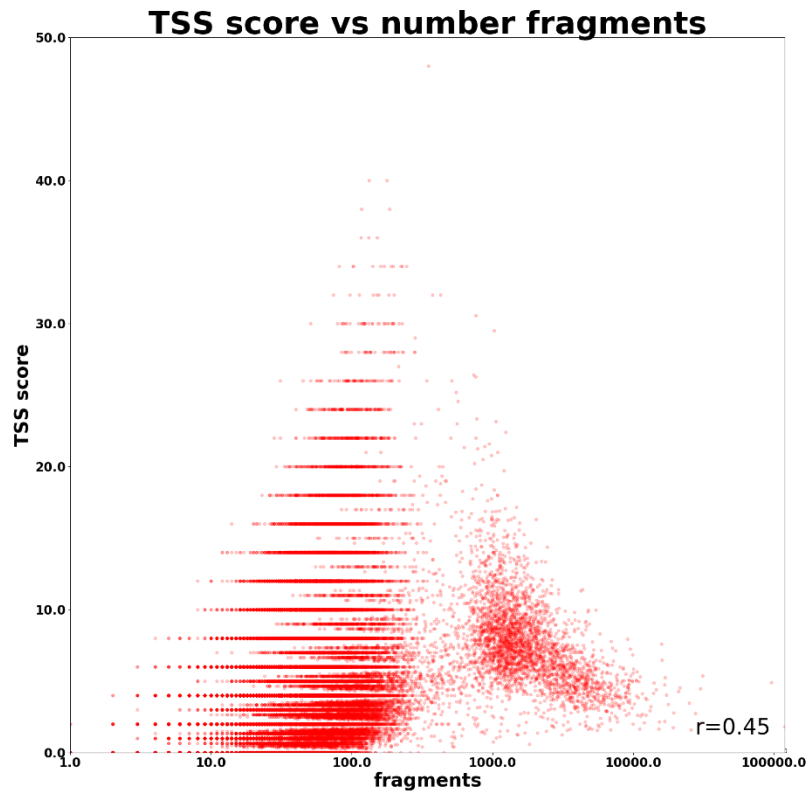
Mangabey Cerebellum



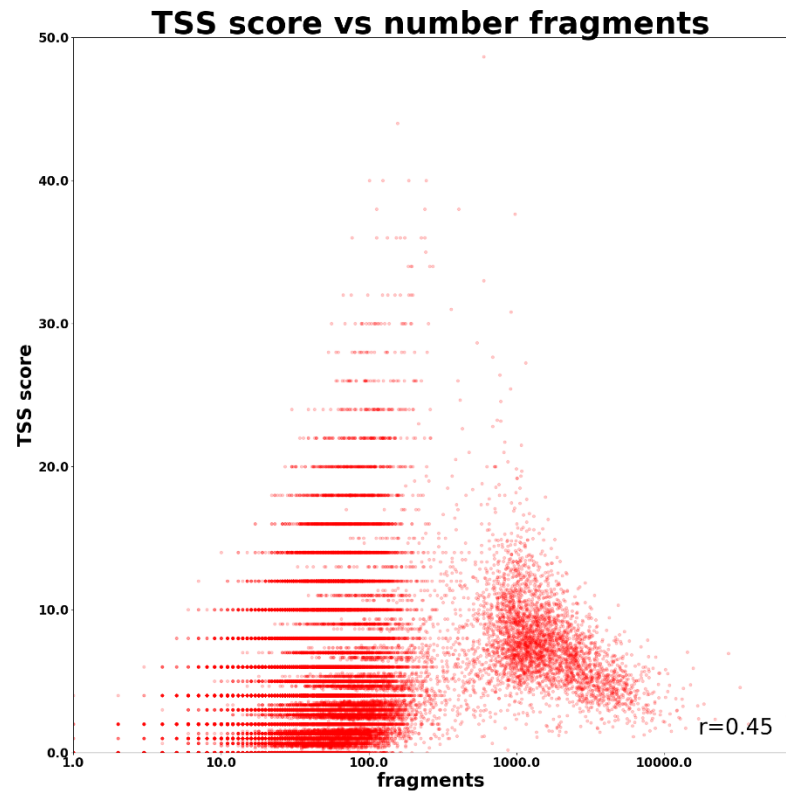
Mangabey Frontal Cortex



Vervet Cerebellum

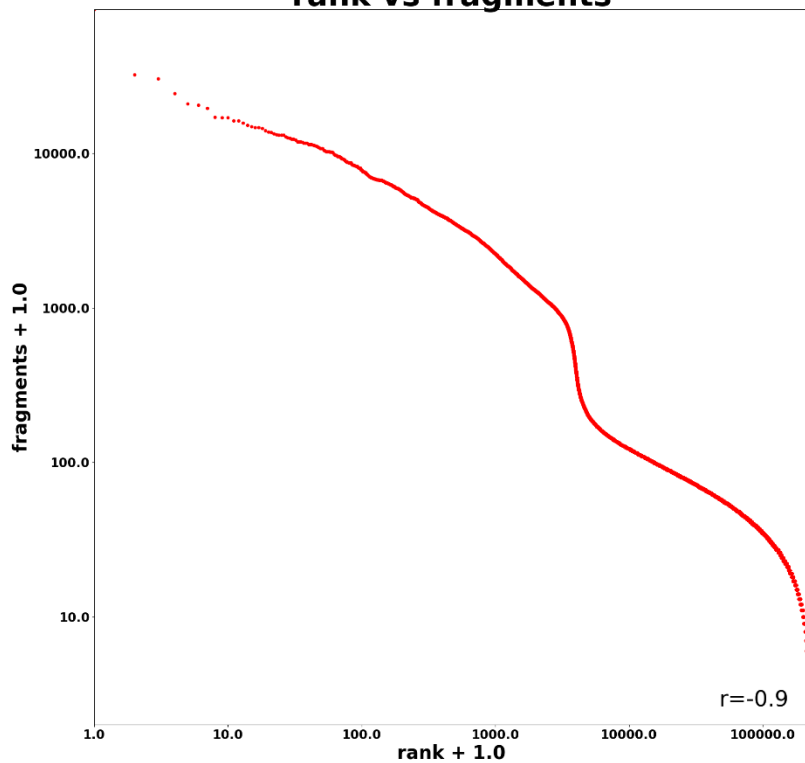


Vervet Frontal Cortex



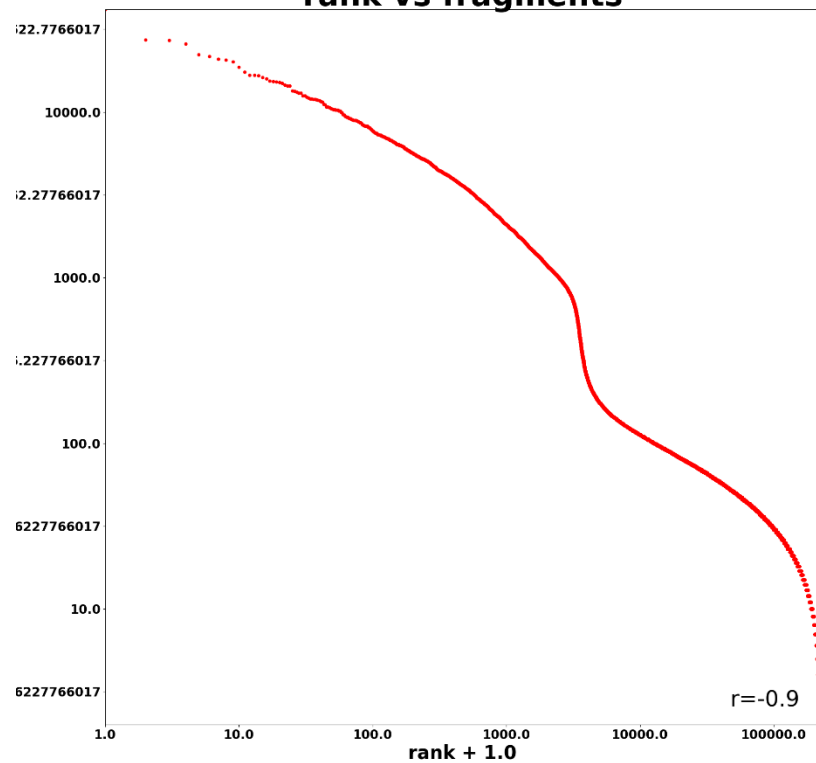
Mangabey Cerebellum

rank vs fragments

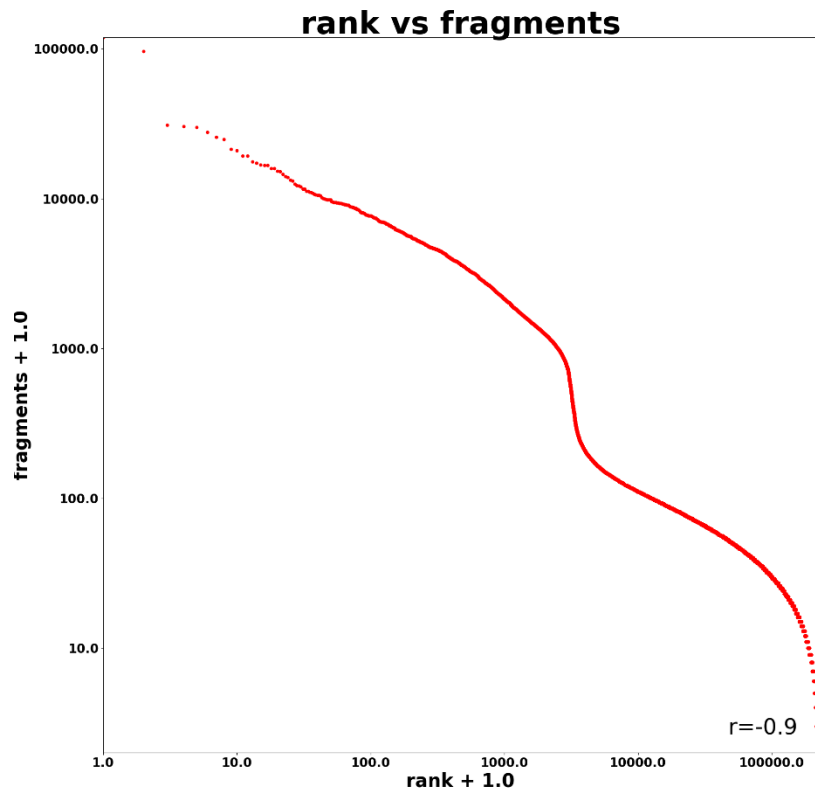


Mangabey Frontal Cortex

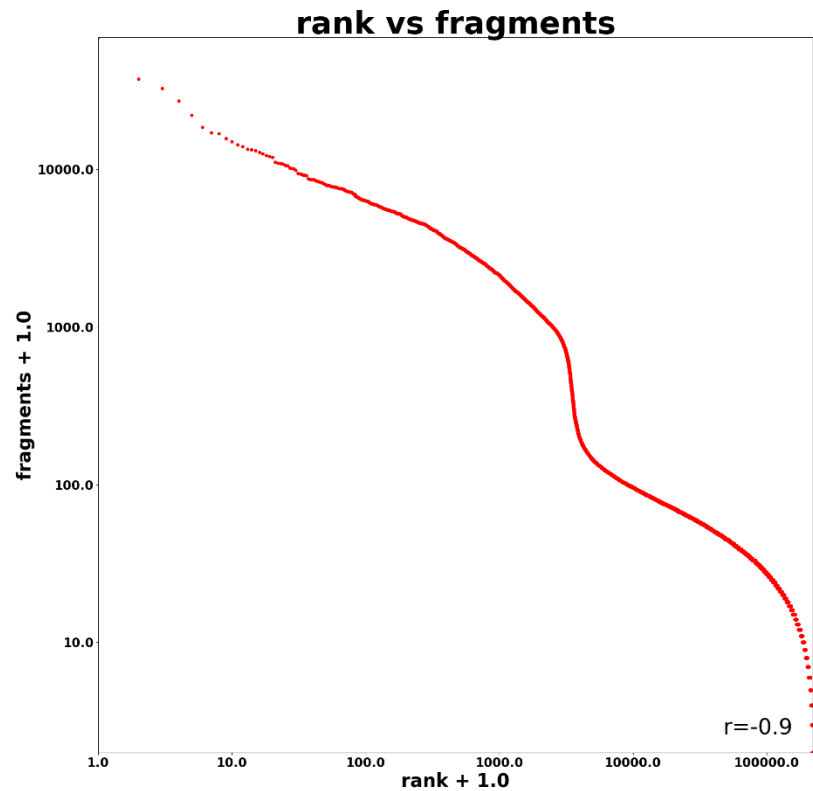
rank vs fragments



Vervet Cerebellum



Vervet Frontal Cortex



Datasets RNA

Library	Read Length	Mapping	Species	Raw fragments	Complexity	Unique	Unique Splices	Multi	Multi Splices	Fraction mapped	Cells >500 UMIs
SK-L316-Cercocebus_torquatus_Chlorocebus_pygerythrus-FrontalCortex_Cerebellum_RNA_20k_3	1x30	STAR-2.5.3a	Cercocebus_atys-Caty_1.0	142,613,946	0.64	6,165,021	1,677,393	48,651,041	4,811,902	0.43	544
SK-L316-Cercocebus_torquatus_Chlorocebus_pygerythrus-FrontalCortex_Cerebellum_RNA_20k_3	1x30	STAR-2.5.3a	Chlorocebus_sabaeus-Vero_WHO_p1.0	142,613,946	0.68	27,982,358	809,392	50,771,968	4,067,894	0.59	5,271

Cercocebus

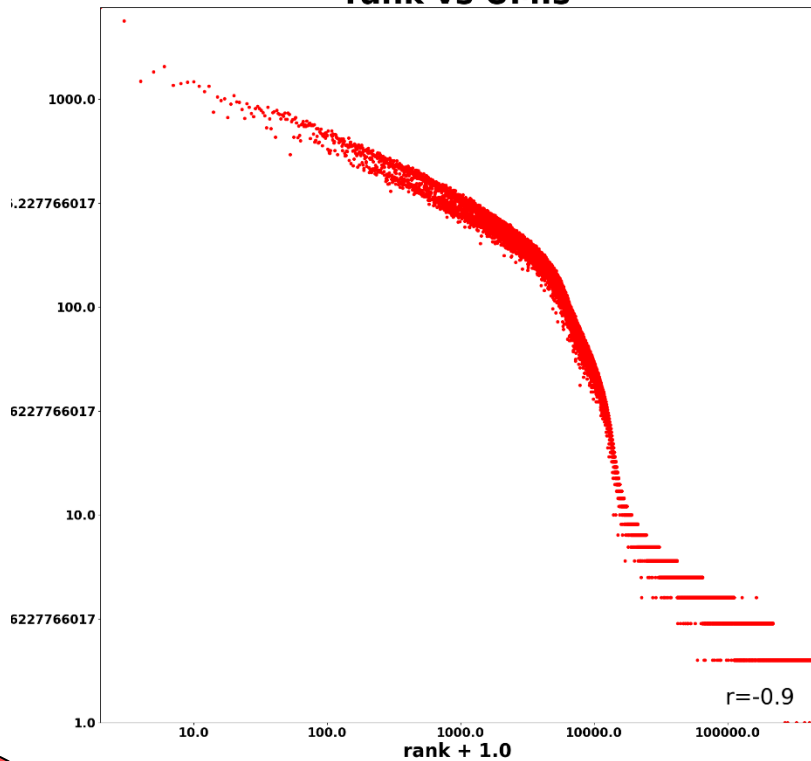
#Class	Fraction
Exonic:	0.072614
Intronic:	0.633489
Intergenic:	0.293897

Cercocebus

#Class	Fraction
Exonic:	0.106201
Intronic:	0.718072
Intergenic:	0.175727

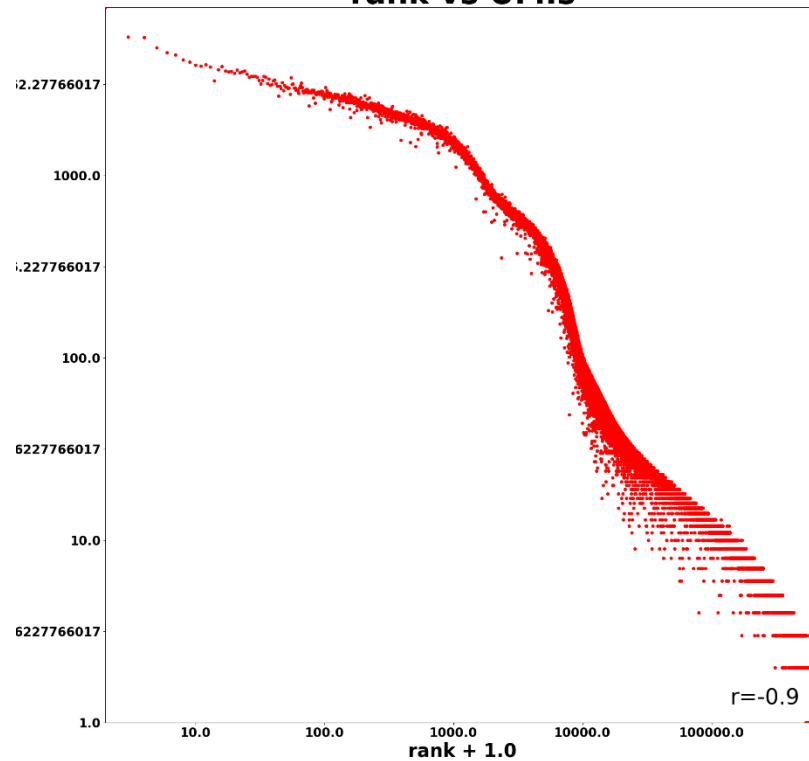
Cercocebus atys

rank vs UMIs



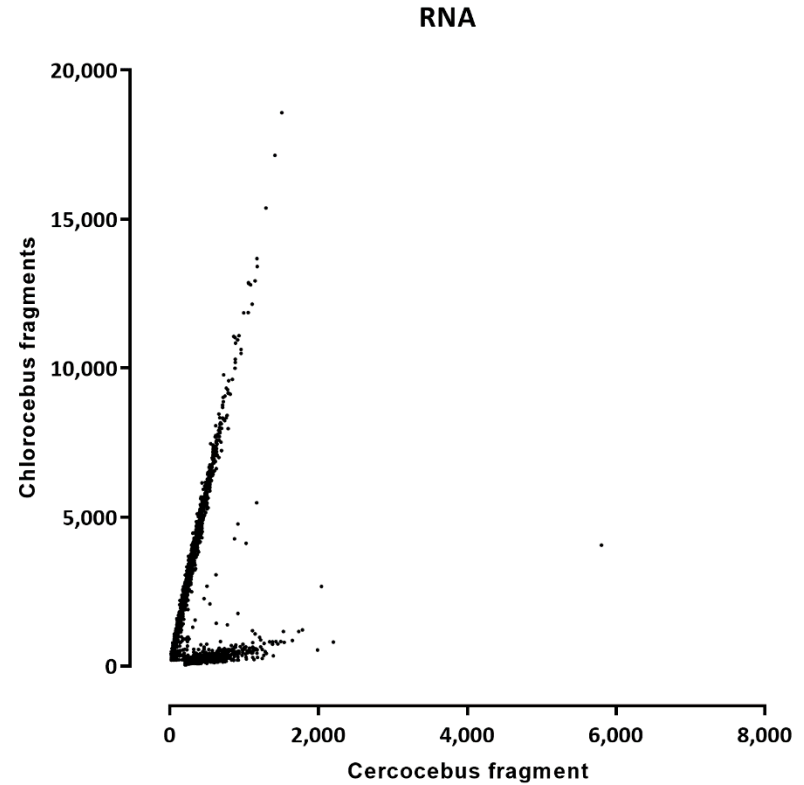
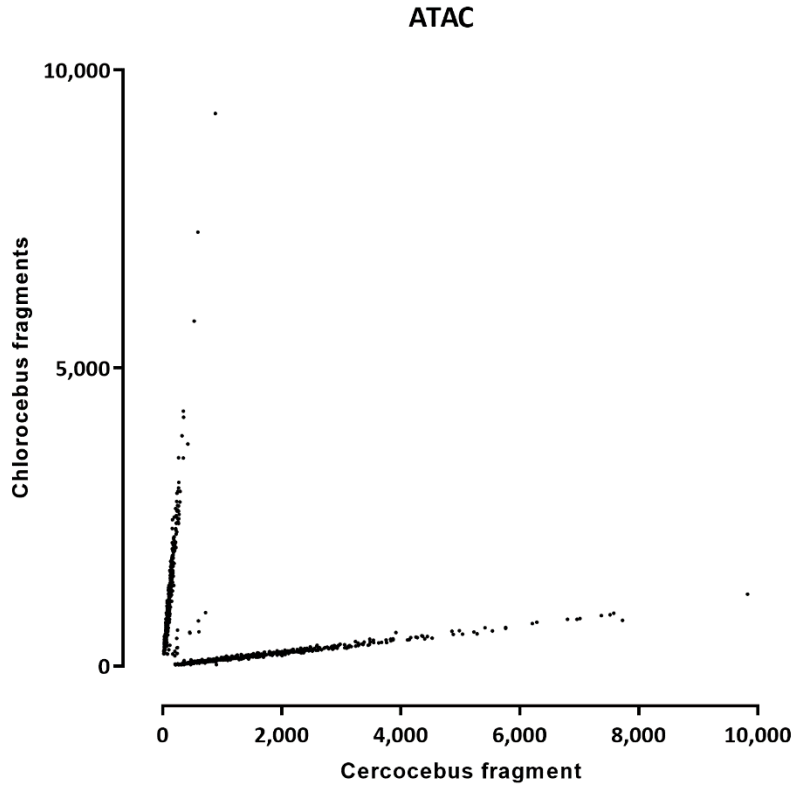
Chlorocebus sabaues

rank vs UMIs



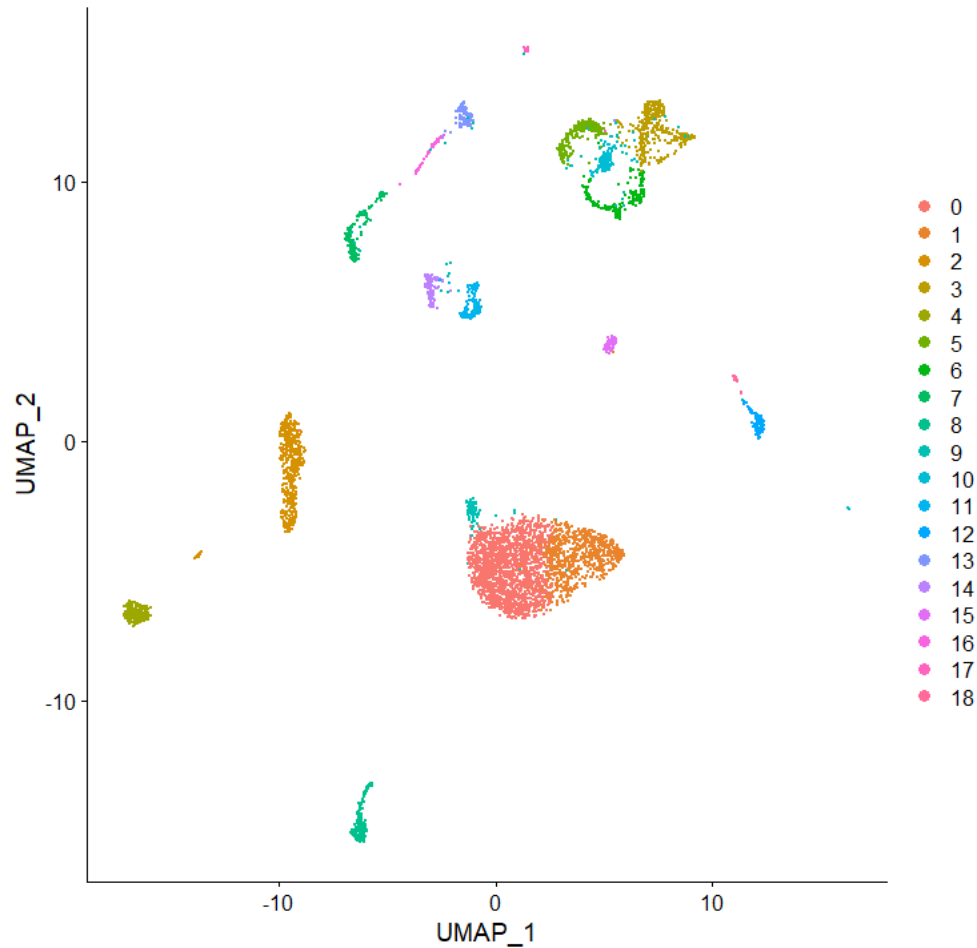
Species mapping

Note: alignment was against the combined index and only the second two rounds were pool split across species

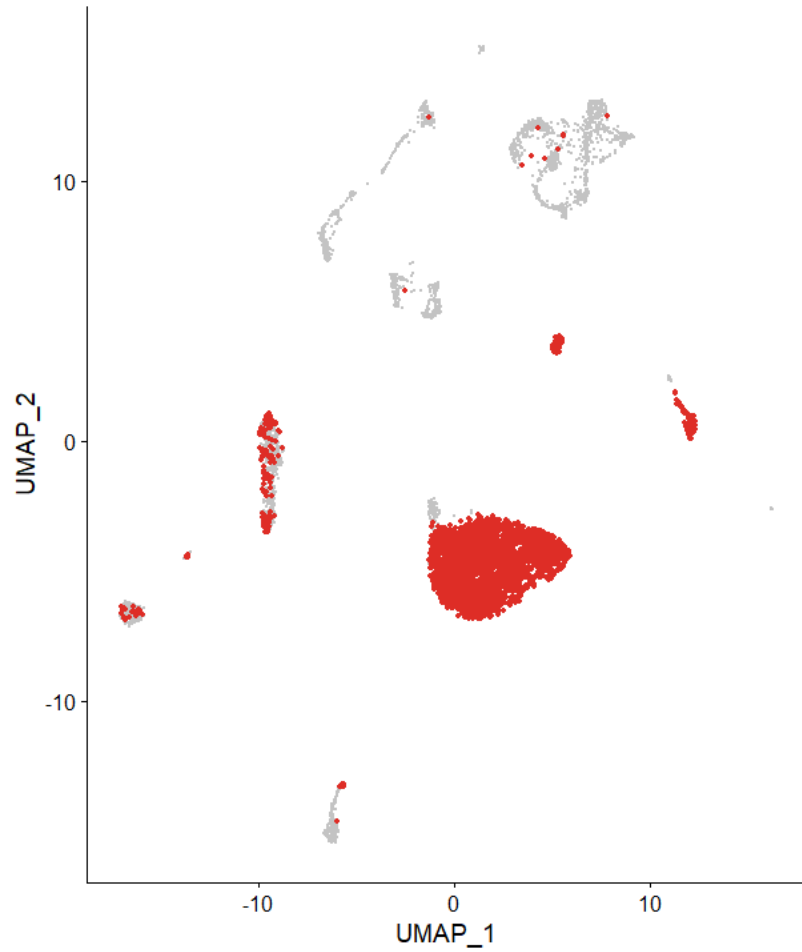


Chlorocebus sabaes

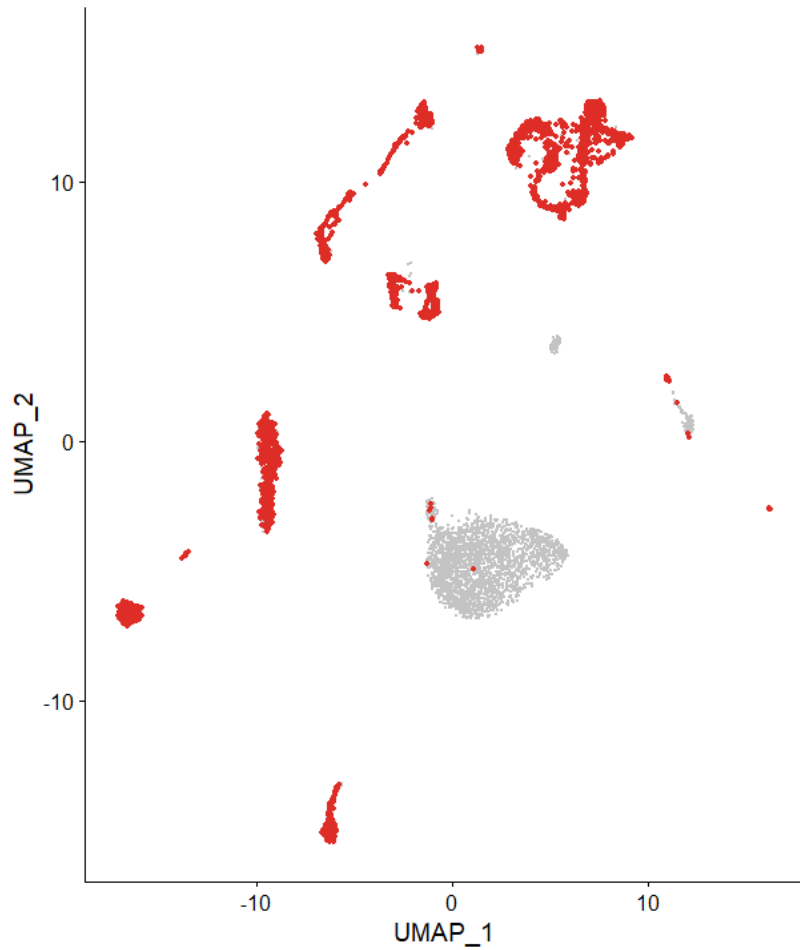
No cluster assignment yet, as the annotation only had symbols, not gene names



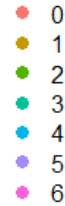
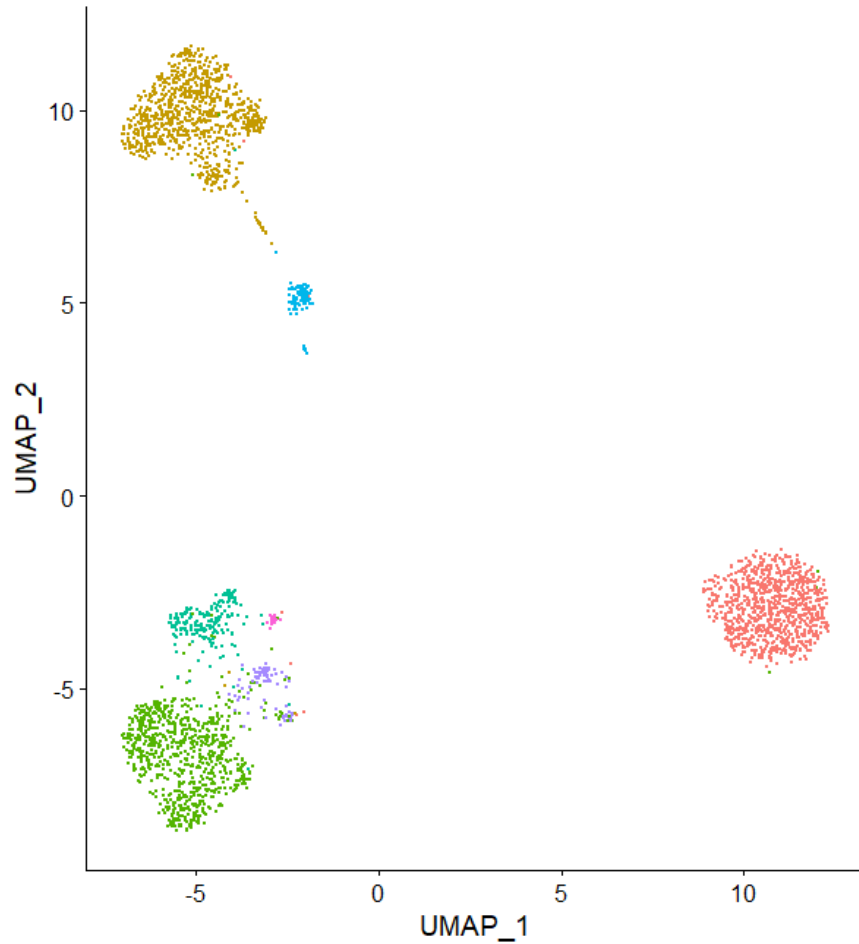
Chlorocebus sabaesus, cerebellum



Chlorocebus sabaesus, cortex

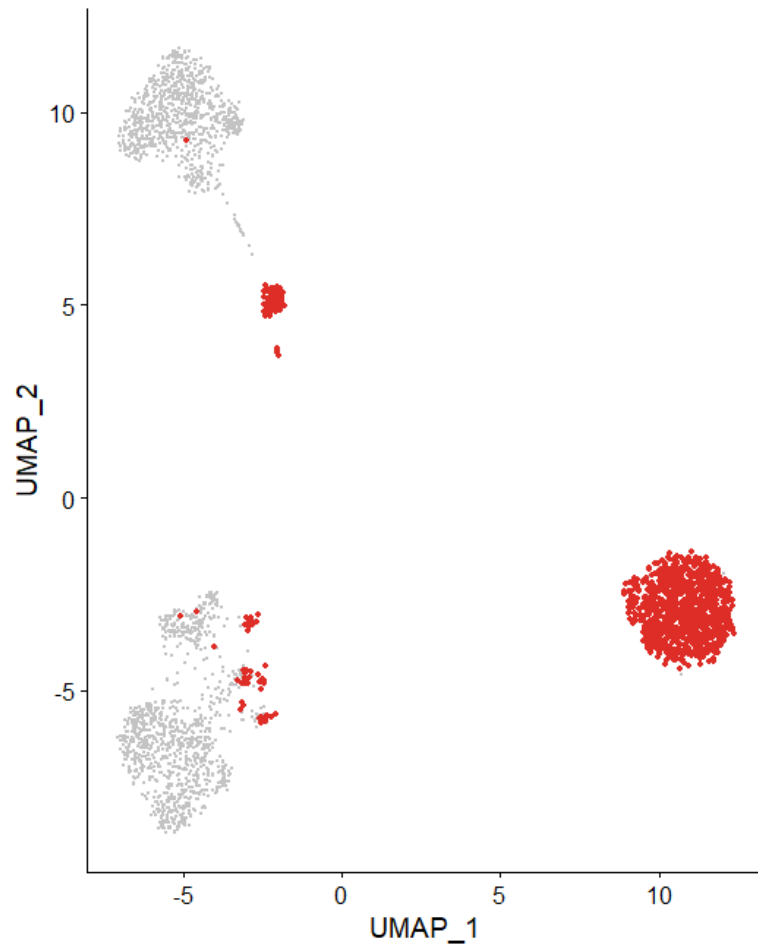


Cercocebus atys

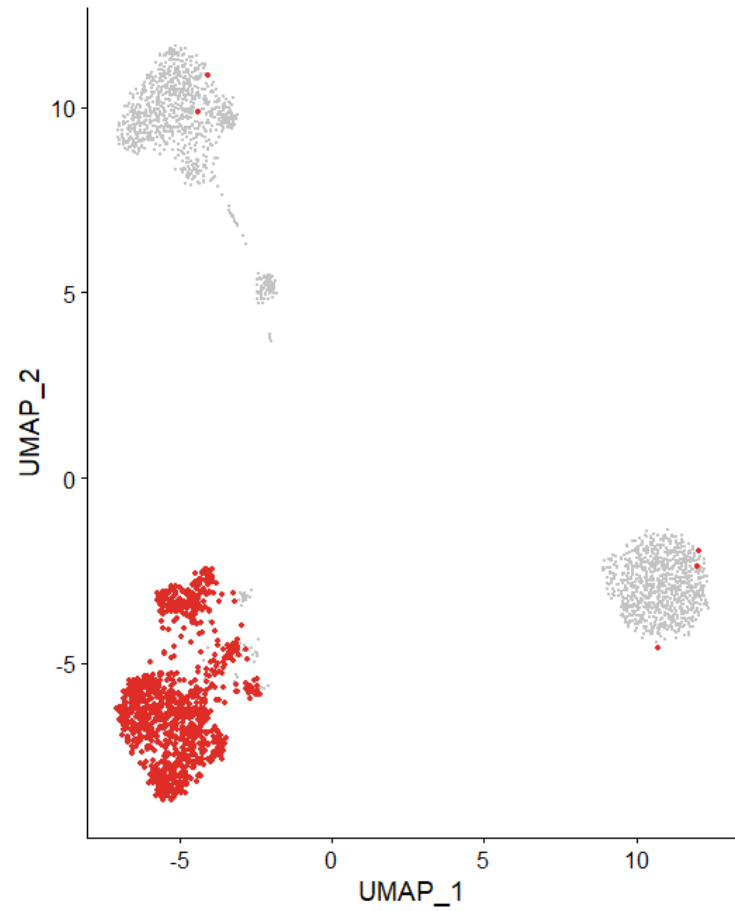


- Cluster 0 – NPC
- Cluster 1 – oligodendrocyte
- Cluster 2 – Glutamatergic neurons
- Cluster 3 – GABAergic neurons
- Cluster 4 – GABAergic neurons
- Cluster 5 – GABAergic neurons
- Cluster 1 – oligodendrocyte precursor

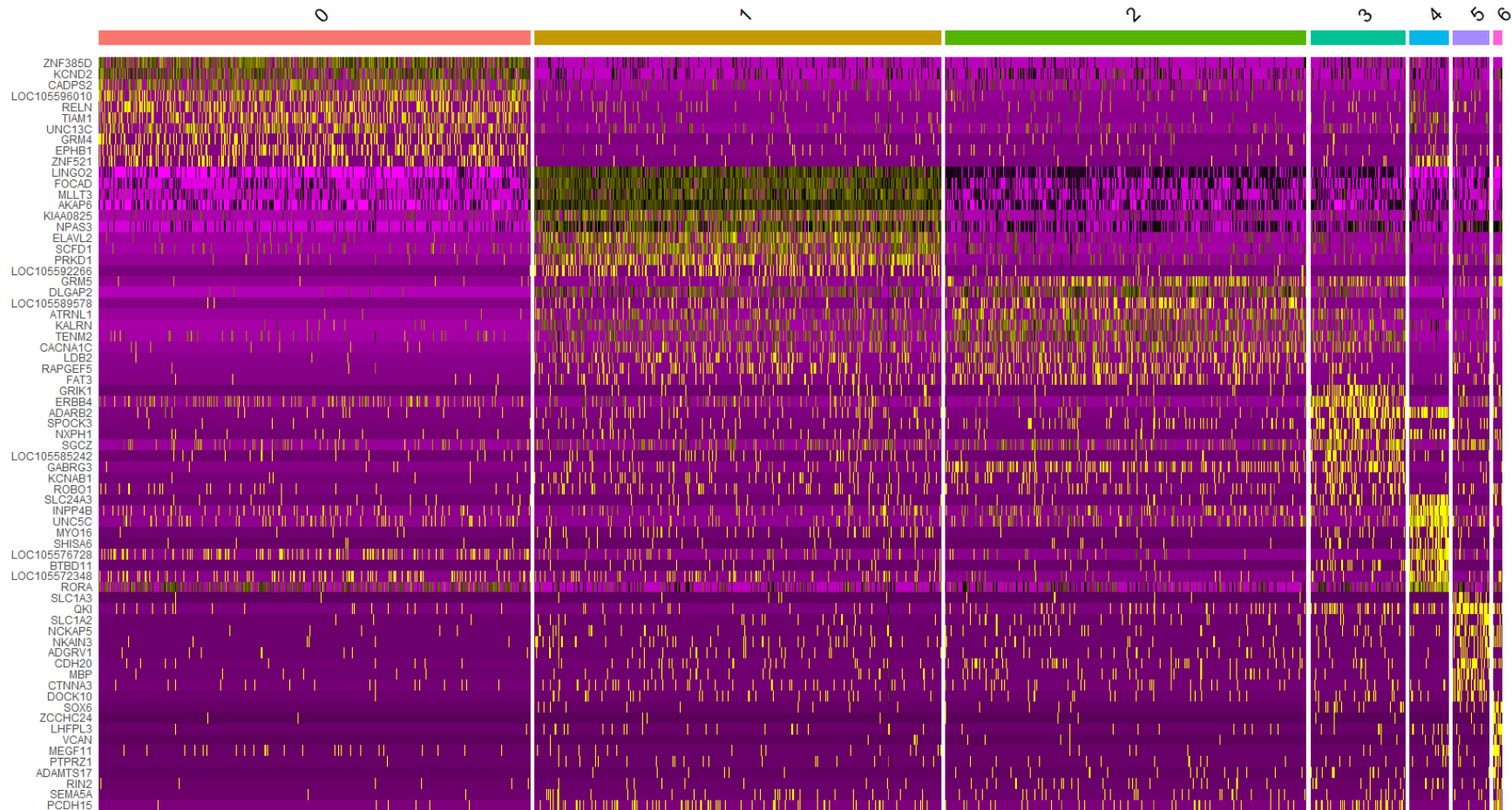
Cercocebus atys, cerebellum



Cercocebus atys, cortex



Cercocebus atys



BRAIN LIBRARIES, PRODUCTION-SCALE RUN

Datasets ATAC

Species	Read Length	Library	Raw fragments	Unique non-chrM reads	Alignment fraction	Complexity	chrM reads	chrM fraction	scATAC dupud reads	scATAC dupud Complexity	TSS ratio	Cells >500 fragments
Cercopithecus torquatus-PD_0408	2x30	SK-L306_ATAC_20k_1.Mangabey_Cerebellum	86,187,869	130,060,152	0.76	0.25	429,856	0.00	38,027,272	0.84	7.07	2,988
Cercopithecus torquatus-PD_0408	2x30	SK-L306_ATAC_20k_1.Mangabey_Frontal_Cortex	83,041,832	124,913,734	0.75	0.24	426,620	0.00	35,020,376	0.84	7.10	2,700
Chlorocebus pygerythrus-PD_0173	2x30	SK-L306_ATAC_20k_1.Vervet_Cerebellum	81,292,398	121,782,260	0.75	0.25	886,610	0.01	35,803,252	0.84	7.67	2,751
Chlorocebus pygerythrus-PD_0173	2x30	SK-L306_ATAC_20k_1.Vervet_Frontal_Cortex	77,151,435	114,535,074	0.75	0.25	876,376	0.01	33,060,298	0.85	7.88	2,745
Cercopithecus torquatus-PD_0408	2x30	SK-L307_ATAC_20k_2.Mangabey_Cerebellum	50,151,871	75,307,738	0.75	0.37	247,852	0.00	31,374,176	0.87	7.07	2,905
Cercopithecus torquatus-PD_0408	2x30	SK-L307_ATAC_20k_2.Mangabey_Frontal_Cortex	49,333,544	73,867,554	0.75	0.36	249,906	0.00	29,865,206	0.87	6.99	2,995
Chlorocebus pygerythrus-PD_0173	2x30	SK-L307_ATAC_20k_2.Vervet_Cerebellum	48,952,833	72,715,088	0.75	0.37	538,828	0.01	30,235,092	0.87	7.80	2,810
Chlorocebus pygerythrus-PD_0173	2x30	SK-L307_ATAC_20k_2.Vervet_Frontal_Cortex	47,285,967	69,662,634	0.74	0.36	507,468	0.01	28,381,492	0.88	7.89	2,760
Cercopithecus torquatus-PD_0408	2x30	SK-L308_ATAC_20k_3.Mangabey_Cerebellum	159,385,526	242,231,356	0.76	0.20	833,274	0.00	63,411,766	0.77	7.15	3,688
Cercopithecus torquatus-PD_0408	2x30	SK-L308_ATAC_20k_3.Mangabey_Frontal_Cortex	151,988,776	231,900,280	0.77	0.20	815,124	0.00	58,470,866	0.78	7.05	3,282
Chlorocebus pygerythrus-PD_0173	2x30	SK-L308_ATAC_20k_3.Vervet_Cerebellum	149,788,209	225,363,028	0.76	0.20	1,681,112	0.01	57,476,412	0.78	7.77	3,086
Chlorocebus pygerythrus-PD_0173	2x30	SK-L308_ATAC_20k_3.Vervet_Frontal_Cortex	137,298,270	206,332,918	0.76	0.20	1,623,408	0.01	51,846,126	0.80	7.89	3,193
Cercopithecus torquatus-PD_0408	2x30	SK-L309_ATAC_20k_4.Mangabey_Cerebellum	76,616,704	115,563,016	0.76	0.30	390,430	0.00	41,139,188	0.84	7.19	3,189
Cercopithecus torquatus-PD_0408	2x30	SK-L309_ATAC_20k_4.Mangabey_Frontal_Cortex	73,299,999	110,206,732	0.75	0.29	376,780	0.00	37,757,566	0.85	7.08	2,838
Chlorocebus pygerythrus-PD_0173	2x30	SK-L309_ATAC_20k_4.Vervet_Cerebellum	77,864,629	116,367,262	0.75	0.30	890,860	0.01	40,965,168	0.84	7.84	2,991
Chlorocebus pygerythrus-PD_0173	2x30	SK-L309_ATAC_20k_4.Vervet_Frontal_Cortex	70,135,340	104,301,578	0.75	0.30	787,820	0.01	36,145,796	0.85	7.88	3,027
Cercopithecus torquatus-PD_0408	2x30	SK-L310_ATAC_20k_5.Mangabey_Cerebellum	57,778,831	85,260,276	0.74	0.30	274,284	0.00	29,747,284	0.86	7.01	2,607
Cercopithecus torquatus-PD_0408	2x30	SK-L310_ATAC_20k_5.Mangabey_Frontal_Cortex	54,303,630	80,165,026	0.74	0.30	258,412	0.00	27,174,084	0.87	7.00	2,325
Chlorocebus pygerythrus-PD_0173	2x30	SK-L310_ATAC_20k_5.Vervet_Cerebellum	57,115,041	83,612,606	0.74	0.30	608,848	0.01	28,776,992	0.87	7.63	2,628
Chlorocebus pygerythrus-PD_0173	2x30	SK-L310_ATAC_20k_5.Vervet_Frontal_Cortex	51,191,963	74,631,252	0.73	0.30	564,254	0.01	25,576,456	0.88	7.85	2,471
Cercopithecus torquatus-PD_0408	2x30	SK-L311_ATAC_20k_6.Mangabey_Cerebellum	87,338,934	131,094,588	0.75	0.24	435,534	0.00	38,131,098	0.83	7.10	2,884
Cercopithecus torquatus-PD_0408	2x30	SK-L311_ATAC_20k_6.Mangabey_Frontal_Cortex	84,246,506	126,605,720	0.75	0.24	424,530	0.00	35,333,940	0.84	7.11	2,690
Chlorocebus pygerythrus-PD_0173	2x30	SK-L311_ATAC_20k_6.Vervet_Cerebellum	86,116,728	127,976,230	0.75	0.24	939,104	0.01	37,210,396	0.83	7.79	2,792
Chlorocebus pygerythrus-PD_0173	2x30	SK-L311_ATAC_20k_6.Vervet_Frontal_Cortex	79,355,882	117,237,068	0.74	0.24	873,698	0.01	33,549,856	0.85	7.98	2,775
Cercopithecus torquatus-PD_0408	2x30	SK-L312_ATAC_20k_7.Mangabey_Cerebellum	108,316,194	160,403,494	0.74	0.20	522,856	0.00	38,778,964	0.82	6.97	2,860
Cercopithecus torquatus-PD_0408	2x30	SK-L312_ATAC_20k_7.Mangabey_Frontal_Cortex	103,386,012	152,959,396	0.74	0.19	501,602	0.00	35,848,744	0.83	7.05	2,623
Chlorocebus pygerythrus-PD_0173	2x30	SK-L312_ATAC_20k_7.Vervet_Cerebellum	104,692,849	154,235,624	0.74	0.20	1,186,882	0.01	37,285,298	0.82	7.89	2,795
Chlorocebus pygerythrus-PD_0173	2x30	SK-L312_ATAC_20k_7.Vervet_Frontal_Cortex	99,919,219	146,200,404	0.74	0.20	1,129,876	0.01	35,042,168	0.83	7.92	2,676
Cercopithecus torquatus-PD_0408	2x30	SK-L313_ATAC_20k_8.Mangabey_Cerebellum	105,785,195	158,805,232	0.75	0.21	500,338	0.00	39,926,250	0.82	7.05	3,010
Cercopithecus torquatus-PD_0408	2x30	SK-L313_ATAC_20k_8.Mangabey_Frontal_Cortex	96,575,905	144,544,260	0.75	0.21	452,168	0.00	35,519,874	0.83	7.14	2,671
Chlorocebus pygerythrus-PD_0173	2x30	SK-L313_ATAC_20k_8.Vervet_Cerebellum	101,158,601	151,169,946	0.75	0.21	1,046,416	0.01	37,762,394	0.83	7.95	2,940
Chlorocebus pygerythrus-PD_0173	2x30	SK-L313_ATAC_20k_8.Vervet_Frontal_Cortex	95,639,823	141,485,672	0.75	0.21	1,063,846	0.01	35,619,446	0.83	7.99	2,904

Datasets RNA

Library	Read Length	Mapping	Species	Raw fragments	Complexity	Unique	Unique Splices	Multi	Multi Splices	Fraction mapped	Cells >500 UMIs
SK-L314-Mangabey_Cerebellum	1x96	HiSAT2	<i>Cercocebus torquatus</i> -PD_0408	68,798,082	0.72	29,073,637	1,529,421	676,802	65,602	0.46	422
SK-L314-Mangabey_Frontal_Cortex	1x96	HiSAT2	<i>Cercocebus torquatus</i> -PD_0408	62,653,775	0.73	26,653,377	1,353,867	618,719	61,840	0.46	352
SK-L314-Vervet_Cerebellum	1x96	HiSAT2	<i>Chlorocebus pygerythrus</i> -PD_0173	64,308,054	0.74	32,974,762	1,590,819	876,305	102,366	0.55	484
SK-L314-Vervet_Frontal_Cortex	1x96	HiSAT2	<i>Chlorocebus pygerythrus</i> -PD_0173	60,357,315	0.75	30,787,116	1,487,118	820,720	98,251	0.55	477
SK-L315-Mangabey_Cerebellum	1x96	HiSAT2	<i>Cercocebus torquatus</i> -PD_0408	104,570,564	0.66	46,092,385	2,507,200	1,102,246	145,358	0.48	489
SK-L315-Mangabey_Frontal_Cortex	1x96	HiSAT2	<i>Cercocebus torquatus</i> -PD_0408	99,276,976	0.66	43,837,121	2,334,613	1,044,477	146,711	0.48	439
SK-L315-Vervet_Cerebellum	1x96	HiSAT2	<i>Chlorocebus pygerythrus</i> -PD_0173	103,148,901	0.68	55,707,899	2,740,325	1,501,089	217,806	0.58	647
SK-L315-Vervet_Frontal_Cortex	1x96	HiSAT2	<i>Chlorocebus pygerythrus</i> -PD_0173	97,136,463	0.68	52,386,415	2,581,119	1,403,346	202,155	0.58	595
SK-L316-Mangabey_Cerebellum	1x96	HiSAT2	<i>Cercocebus torquatus</i> -PD_0408	125,931,450	0.65	54,875,114	3,054,910	1,298,487	188,697	0.47	518
SK-L316-Mangabey_Frontal_Cortex	1x96	HiSAT2	<i>Cercocebus torquatus</i> -PD_0408	119,159,794	0.65	52,042,549	2,874,394	1,228,831	162,191	0.47	486
SK-L316-Vervet_Cerebellum	1x96	HiSAT2	<i>Chlorocebus pygerythrus</i> -PD_0173	116,336,220	0.67	62,170,405	3,098,815	1,652,860	262,696	0.58	690
SK-L316-Vervet_Frontal_Cortex	1x96	HiSAT2	<i>Chlorocebus pygerythrus</i> -PD_0173	107,837,282	0.67	57,543,967	2,875,522	1,538,289	234,109	0.58	640
SK-L317-Mangabey_Cerebellum	1x96	HiSAT2	<i>Cercocebus torquatus</i> -PD_0408	114,212,490	0.65	51,552,302	2,882,526	1,204,301	187,321	0.49	503
SK-L317-Mangabey_Frontal_Cortex	1x96	HiSAT2	<i>Cercocebus torquatus</i> -PD_0408	112,461,851	0.65	50,731,697	2,804,721	1,192,171	166,630	0.49	501
SK-L317-Vervet_Cerebellum	1x96	HiSAT2	<i>Chlorocebus pygerythrus</i> -PD_0173	117,873,702	0.66	65,079,033	3,344,755	1,731,612	310,728	0.60	729
SK-L317-Vervet_Frontal_Cortex	1x96	HiSAT2	<i>Chlorocebus pygerythrus</i> -PD_0173	105,145,355	0.67	58,034,482	3,005,093	1,542,640	213,199	0.60	634
SK-L318-Mangabey_Cerebellum	1x96	HiSAT2	<i>Cercocebus torquatus</i> -PD_0408	118,746,792	0.65	51,449,907	2,823,317	1,167,702	158,100	0.47	486
SK-L318-Mangabey_Frontal_Cortex	1x96	HiSAT2	<i>Cercocebus torquatus</i> -PD_0408	112,757,242	0.65	48,865,150	2,697,012	1,111,954	154,564	0.47	448
SK-L318-Vervet_Cerebellum	1x96	HiSAT2	<i>Chlorocebus pygerythrus</i> -PD_0173	121,312,147	0.67	64,195,469	3,306,491	1,680,834	286,365	0.57	673
SK-L318-Vervet_Frontal_Cortex	1x96	HiSAT2	<i>Chlorocebus pygerythrus</i> -PD_0173	105,423,289	0.68	55,720,979	2,821,037	1,471,756	205,933	0.57	566
SK-L319-Mangabey_Cerebellum	1x96	HiSAT2	<i>Cercocebus torquatus</i> -PD_0408	109,040,117	0.65	51,094,100	2,722,622	1,178,734	174,267	0.51	486
SK-L319-Mangabey_Frontal_Cortex	1x96	HiSAT2	<i>Cercocebus torquatus</i> -PD_0408	100,381,871	0.65	47,156,830	2,481,627	1,094,220	140,630	0.51	431
SK-L319-Vervet_Cerebellum	1x96	HiSAT2	<i>Chlorocebus pygerythrus</i> -PD_0173	101,529,641	0.67	58,450,767	2,839,374	1,520,504	242,523	0.62	608
SK-L319-Vervet_Frontal_Cortex	1x96	HiSAT2	<i>Chlorocebus pygerythrus</i> -PD_0173	90,511,500	0.68	51,843,806	2,574,485	1,364,604	157,018	0.62	525
SK-L320-Mangabey_Cerebellum	1x96	HiSAT2	<i>Cercocebus torquatus</i> -PD_0408	135,592,546	0.61	67,668,334	3,854,581	1,548,272	261,598	0.54	486
SK-L320-Mangabey_Frontal_Cortex	1x96	HiSAT2	<i>Cercocebus torquatus</i> -PD_0408	124,487,216	0.61	62,194,909	3,491,841	1,424,725	242,923	0.54	449
SK-L320-Vervet_Cerebellum	1x96	HiSAT2	<i>Chlorocebus pygerythrus</i> -PD_0173	128,033,380	0.63	78,860,319	4,016,311	2,054,913	350,805	0.67	632
SK-L320-Vervet_Frontal_Cortex	1x96	HiSAT2	<i>Chlorocebus pygerythrus</i> -PD_0173	120,063,595	0.64	73,644,095	3,790,179	1,932,294	316,002	0.66	601
SK-L321-Mangabey_Cerebellum	1x96	HiSAT2	<i>Cercocebus torquatus</i> -PD_0408	94,508,264	0.66	47,195,234	2,476,690	1,074,624	145,819	0.54	490
SK-L321-Mangabey_Frontal_Cortex	1x96	HiSAT2	<i>Cercocebus torquatus</i> -PD_0408	87,278,495	0.66	43,472,567	2,293,153	996,838	119,571	0.54	471
SK-L321-Vervet_Cerebellum	1x96	HiSAT2	<i>Chlorocebus pygerythrus</i> -PD_0173	91,773,722	0.68	56,023,574	2,693,372	1,443,615	190,564	0.66	633
SK-L321-Vervet_Frontal_Cortex	1x96	HiSAT2	<i>Chlorocebus pygerythrus</i> -PD_0173	83,193,433	0.68	50,499,992	2,442,877	1,302,324	180,829	0.65	565
SK-L330-Mangabey_Left_kidney_ID_FRU	1x96	HiSAT2	<i>Cercocebus torquatus</i> -PD_0408	6,652,800	0.44	3,566,380	312,106	149,820	47,803	0.61	8
SK-L330-Vervet_Left_kidney_ID_1140	1x96	HiSAT2	<i>Chlorocebus pygerythrus</i> -PD_0173	7,352,407	0.48	5,962,727	664,671	381,411	182,563	0.98	259
SK-L330-Vervet_Left_kidney_ID_1404	1x96	HiSAT2	<i>Chlorocebus pygerythrus</i> -PD_0173	10,246,351	0.44	4,241,034	490,984	310,106	137,239	0.51	180
SK-L330-Vervet_Right_kidney_ID_1607	1x96	HiSAT2	<i>Chlorocebus pygerythrus</i> -PD_0173	9,548,460	0.35	5,223,971	747,824	441,161	318,639	0.70	279

Datasets RNA

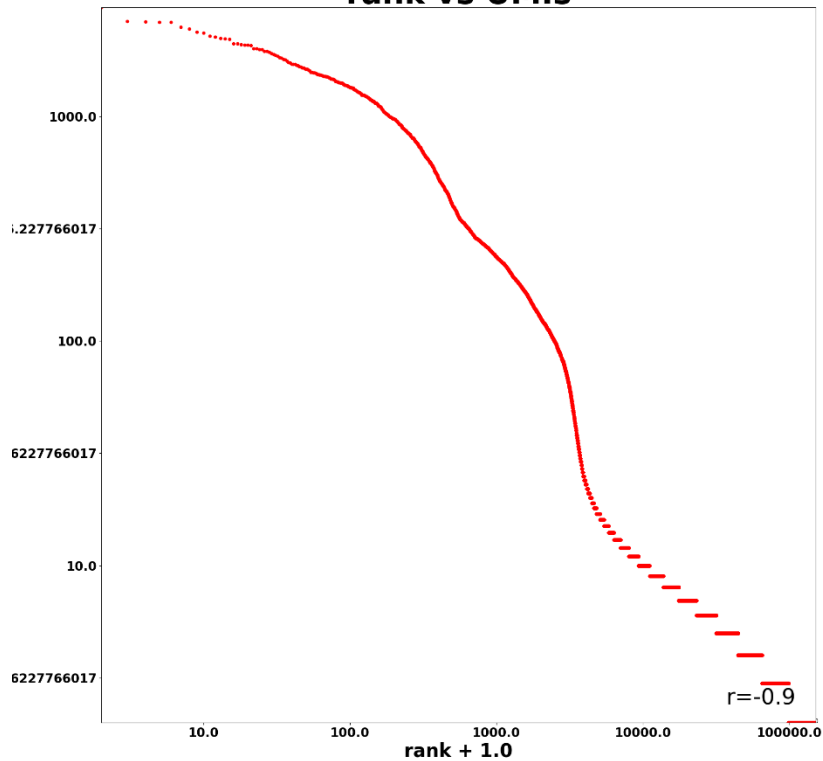
Note: cells above 500 UMIs are low because of the poor assembly+annotation

When analyzed against *Chlorocebus sabaesus*, one of these libraries generated a lot more cells

Library	Read Length	Mapping	Species	Raw fragments	Complexity	Unique	Unique Splices	Multi	Multi Splices	Fraction mapped	Cells >500 UMIs
SK-L316-Cercocebus_torquatus_Chlorocebus_pygerythrus-FrontalCortex_Cerebellum_RNA_20k_3	1x30	STAR-2.5.3a	Cercocebus_atys-Caty_1.0	142,613,946	0.64	6,165,021	1,677,393	48,651,041	4,811,902	0.43	544
SK-L316-Cercocebus_torquatus_Chlorocebus_pygerythrus-FrontalCortex_Cerebellum_RNA_20k_3	1x30	STAR-2.5.3a	Chlorocebus_sabaesus-Vero_WHO_p1.0	142,613,946	0.68	27,982,358	809,392	50,771,968	4,067,894	0.59	5,271

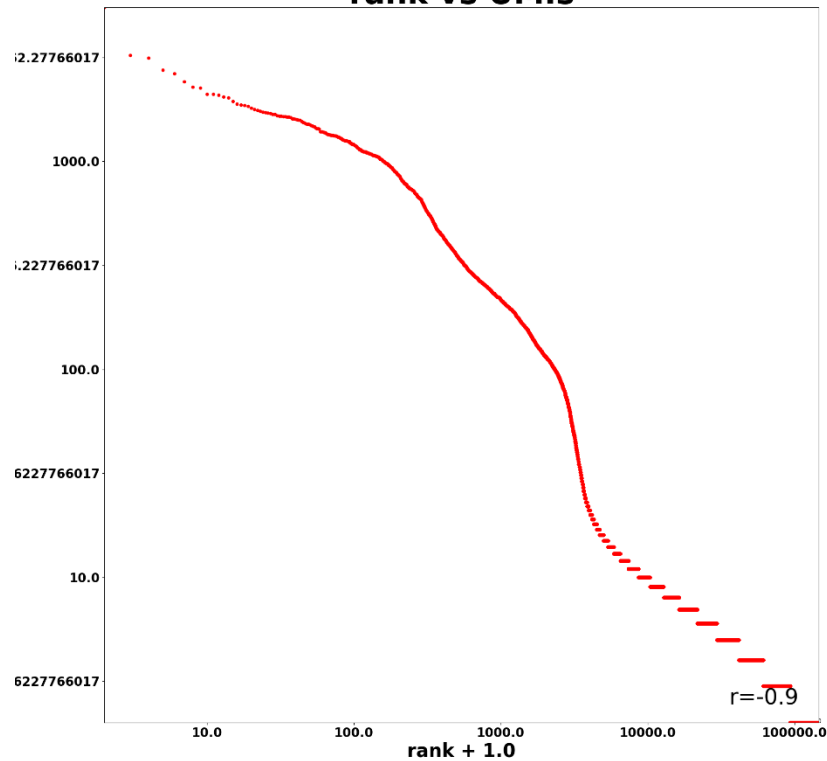
Mangabey Cerebellum 1

rank vs UMIs



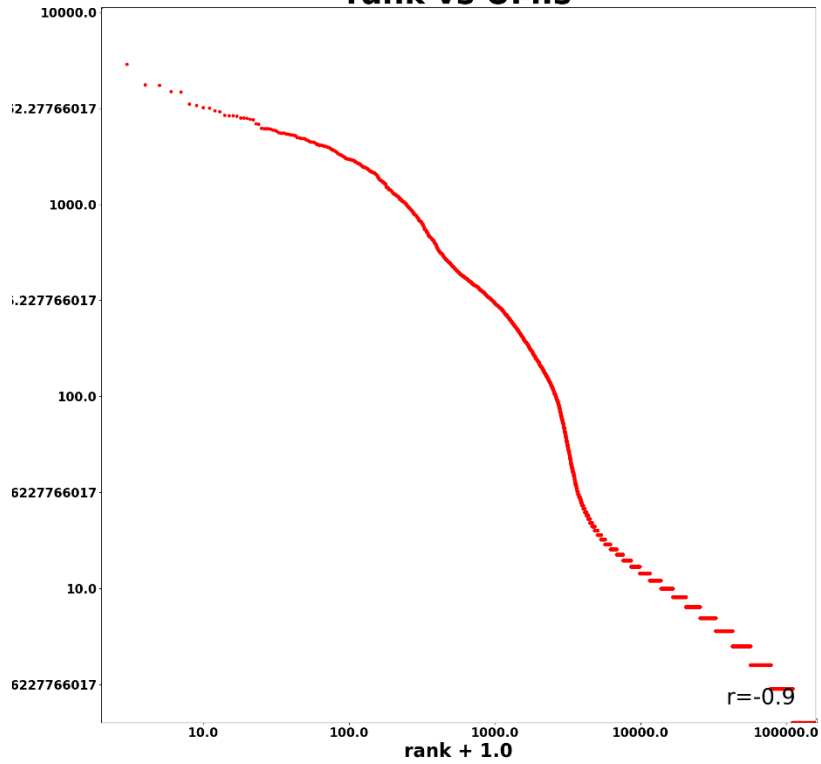
Mangabey Frontal Cortex 1

rank vs UMIs



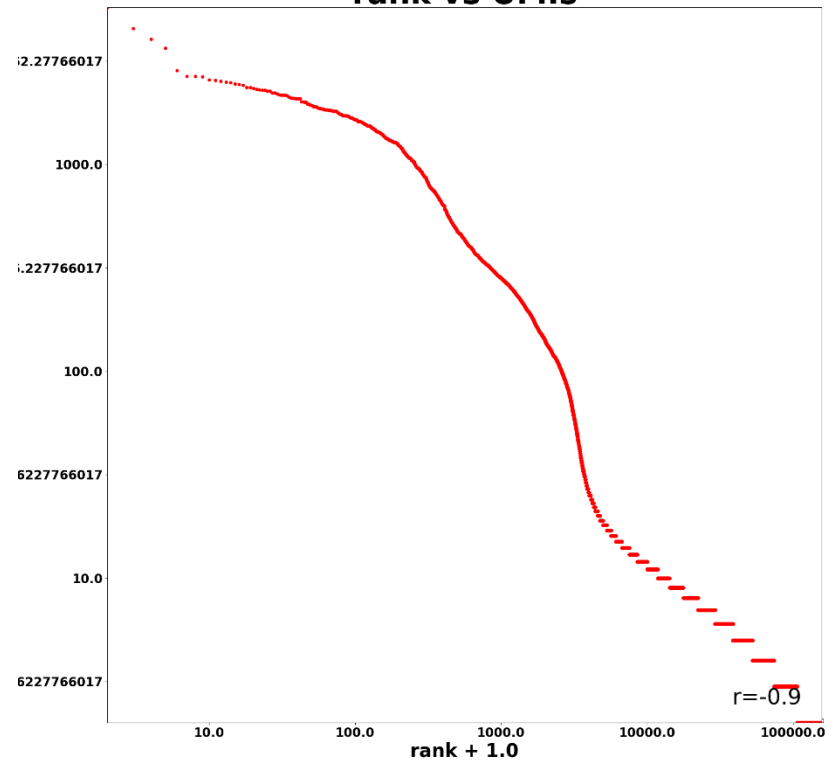
Vervet Cerebellum 1

rank vs UMIs



Vervet Frontal Cortex 1

rank vs UMIs



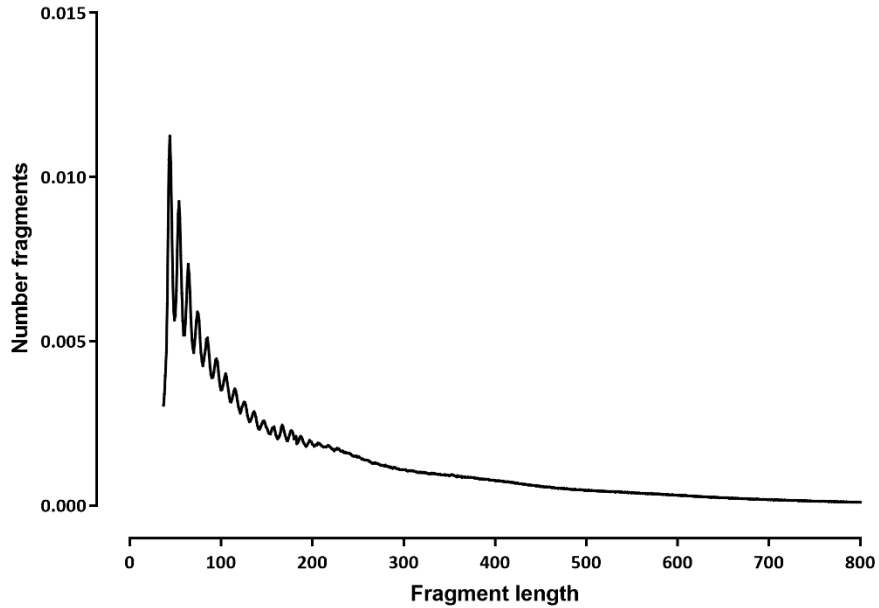
KIDNEY LIBRARIES

Datasets ATAC (single-cell processing)

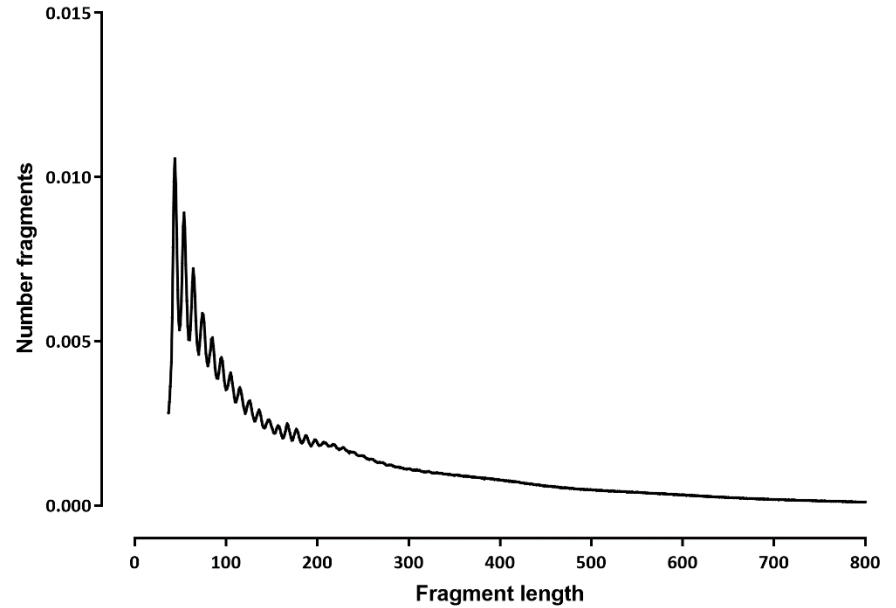
Species	Read Length	Library	Raw fragments	Unique non-chrM reads	Alignment fraction	Complexity	chrM reads	chrM fraction	scATAC dedup reads	scATAC dedup Complexity	TSS ratio	Cells >500 fragments
<i>Cercocebus torquatus</i> -PD_0408	2x30	SK-L322-ATAC_20k_1.Mangabey_Left_kidney_ID_FRU	15,516,356	20,198,178	0.66	0.62	173,856	0.01	13,133,336	0.92	6.20	928
<i>Chlorocebus pygerythrus</i> -PD_0173	2x30	SK-L322-ATAC_20k_1.Vervet_Left_kidney_ID_1140	18,641,773	26,645,170	0.75	0.62	1,166,688	0.04	17,680,056	0.92	6.03	1,476
<i>Chlorocebus pygerythrus</i> -PD_0173	2x30	SK-L322-ATAC_20k_1.Vervet_Left_kidney_ID_1404	21,375,218	29,914,130	0.73	0.62	1,171,578	0.04	19,927,336	0.91	6.09	1,383
<i>Chlorocebus pygerythrus</i> -PD_0173	2x30	SK-L322-ATAC_20k_1.Vervet_Right_kidney_ID_1607	24,712,471	34,860,538	0.75	0.62	2,050,388	0.06	23,550,496	0.90	6.09	1,774

Fragment length

SK-L322-Cercocebus_torquatus



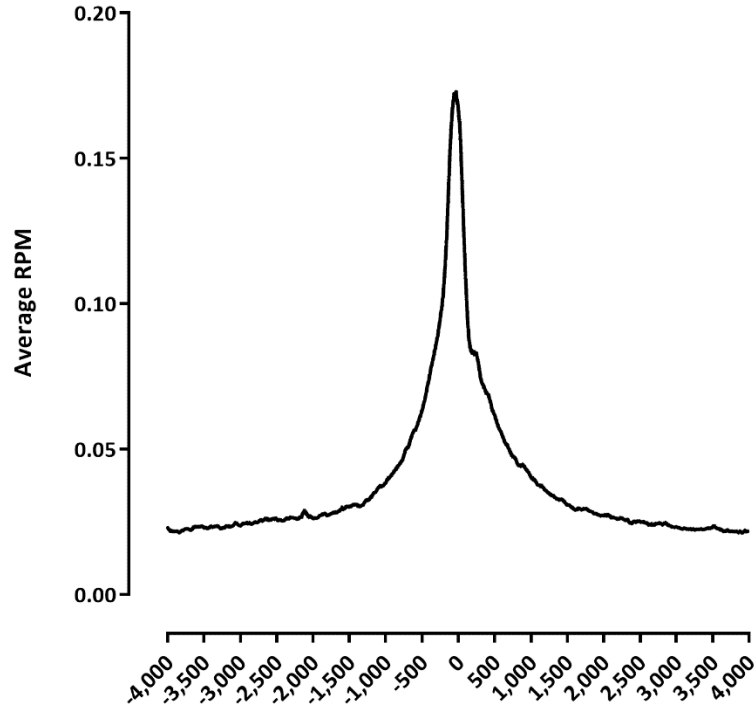
SK-L322-Chlorocebus_pygerythrus



TSS profile

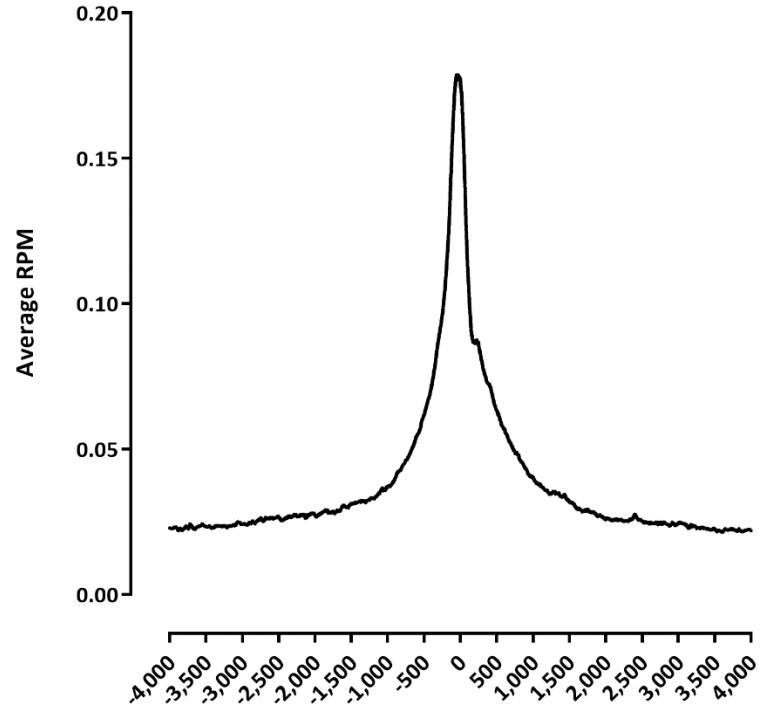
Note: we don't have proper 5'UTR annotations!!!

SK-L322-Cercocebus_torquatus



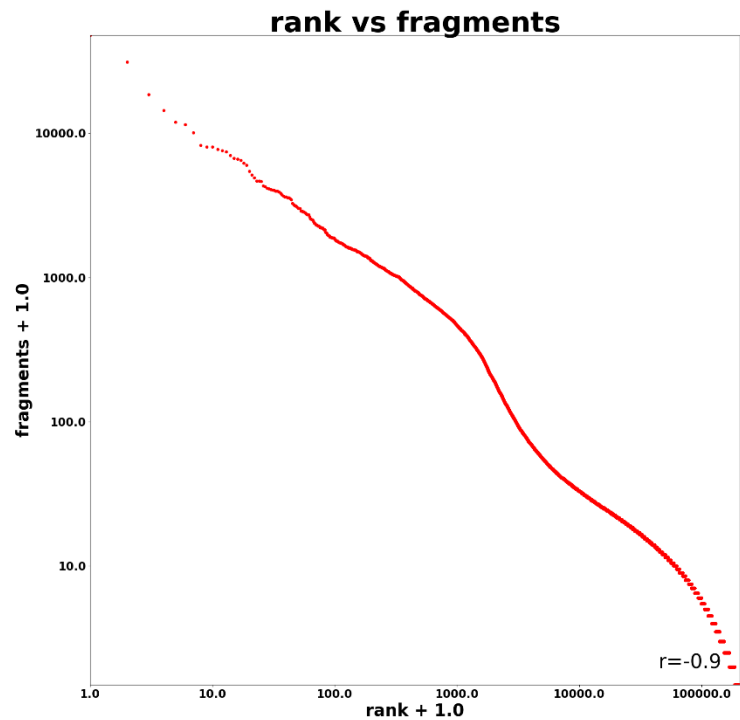
Position relative to TSS

SK-L322-Chlorocebus_pygerythrus

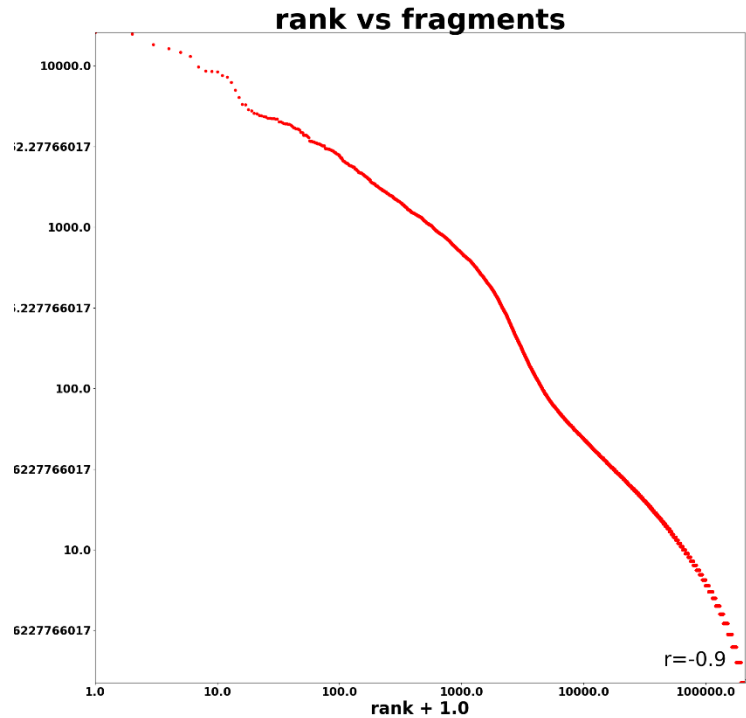


Position relative to TSS

SK-L322-Mangabey_Left_kidney_ID_FRU

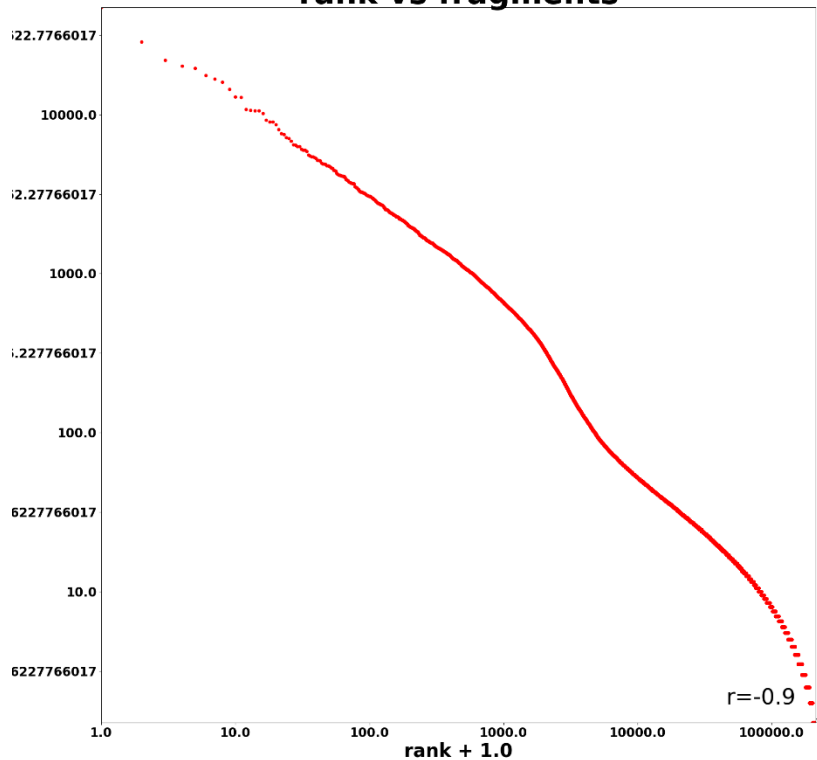


SK-L322-Vervet_Left_kidney_ID_1140



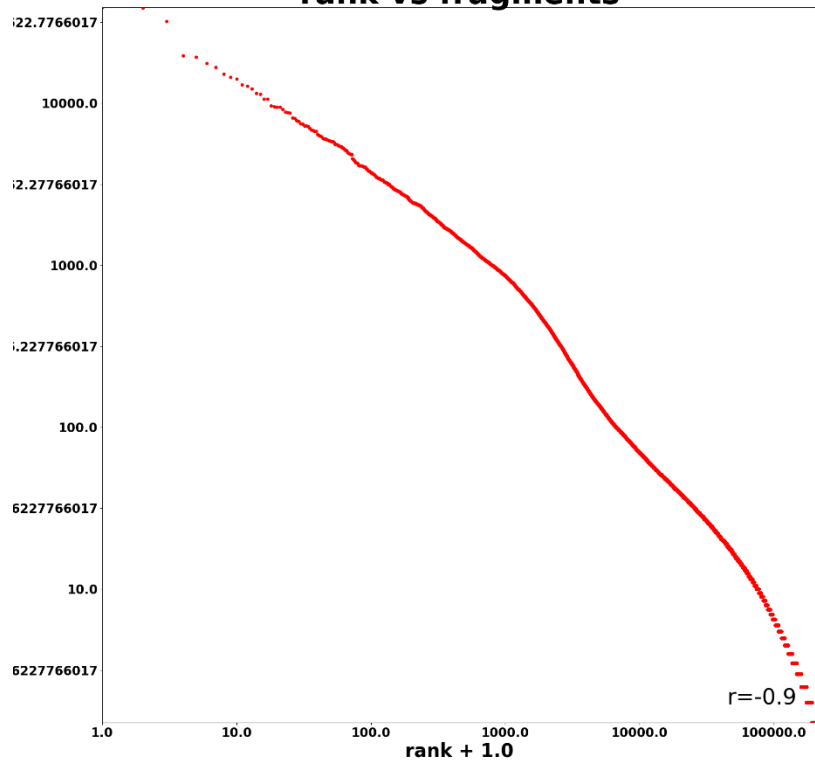
SK-L322-Vervet Left kidney ID 1404

rank vs fragments



SK-L322-Vervet Right kidney ID 1607

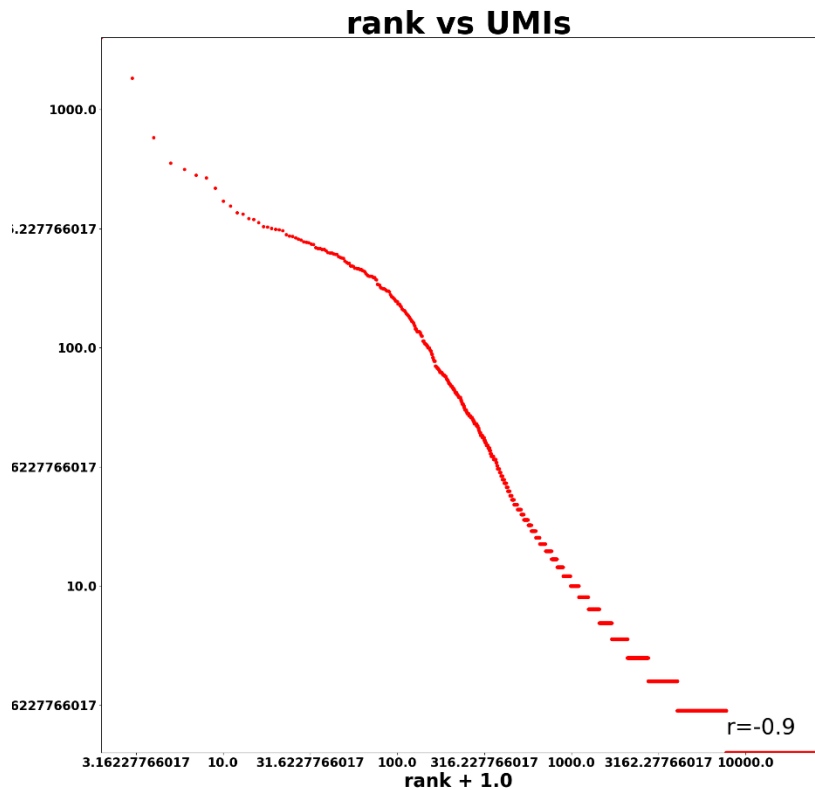
rank vs fragments



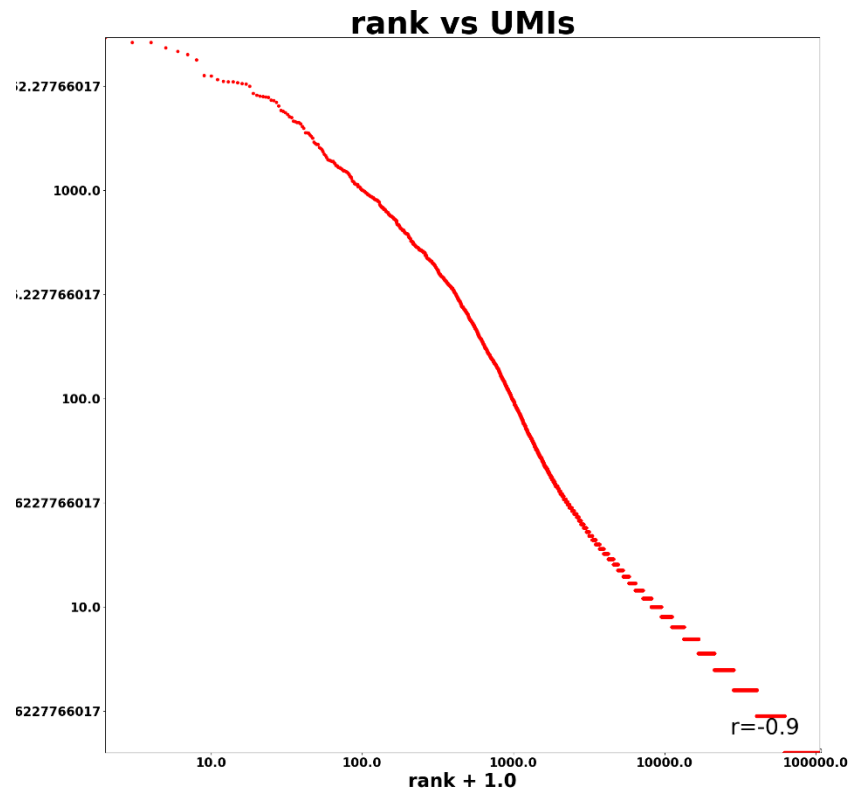
Datasets RNA

Library	Read Length	Mapping	Species	Raw fragments	Complexity	Unique	Unique Splices	Multi	Multi Splices	Fraction mapped	Cells >500 UMIs
SK-L330-Mangabey_Left_kidney_ID_FRU	1x96	HiSAT2	Cercocebus_torquatus-PD_0408	6,652,800	0.44	3,566,380	312,106	149,820	47,803	0.61	8
SK-L330-Vervet_Left_kidney_ID_1140	1x96	HiSAT2	Chlorocebus_pygerythrus-PD_0173	7,352,407	0.48	5,962,727	664,671	381,411	182,563	0.98	259
SK-L330-Vervet_Left_kidney_ID_1404	1x96	HiSAT2	Chlorocebus_pygerythrus-PD_0173	10,246,351	0.44	4,241,034	490,984	310,106	137,239	0.51	180
SK-L330-Vervet_Right_kidney_ID_1607	1x96	HiSAT2	Chlorocebus_pygerythrus-PD_0173	9,548,460	0.35	5,223,971	747,824	441,161	318,639	0.70	279

SK-L330-Mangabey Left kidney ID FRU

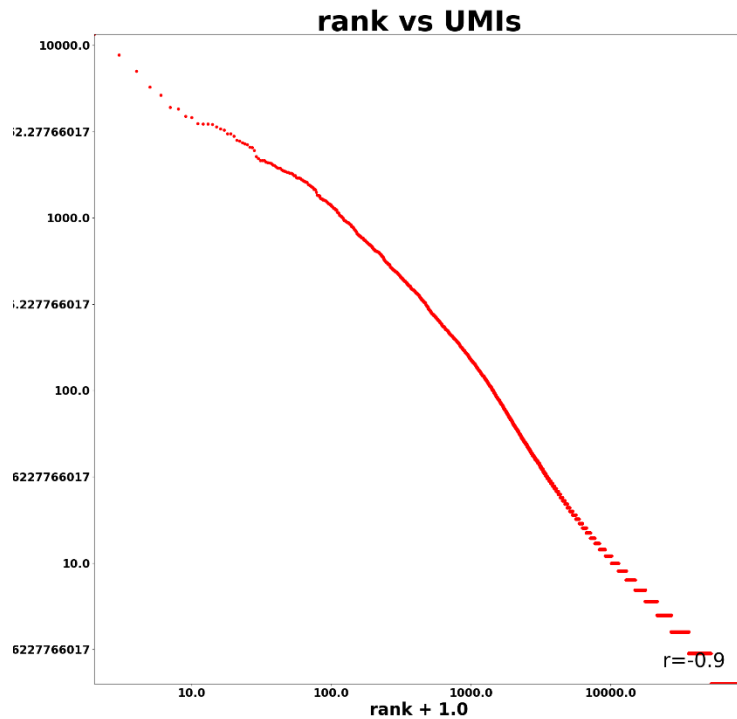
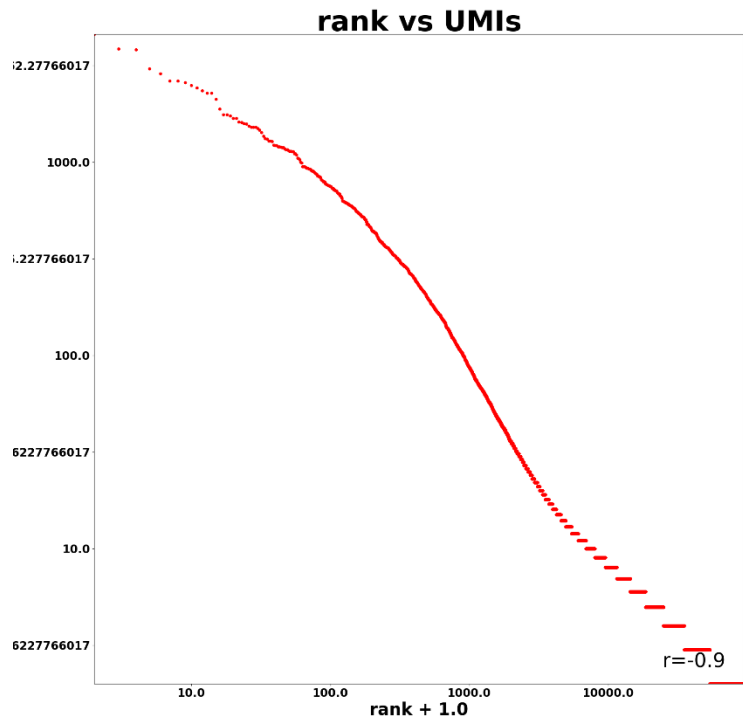


SK-L330-Vervet Left kidney ID 1140



SK-L330-Vervet_Left_kidney_ID_1404

SK-L330-Vervet_Right_kidney_ID_1607

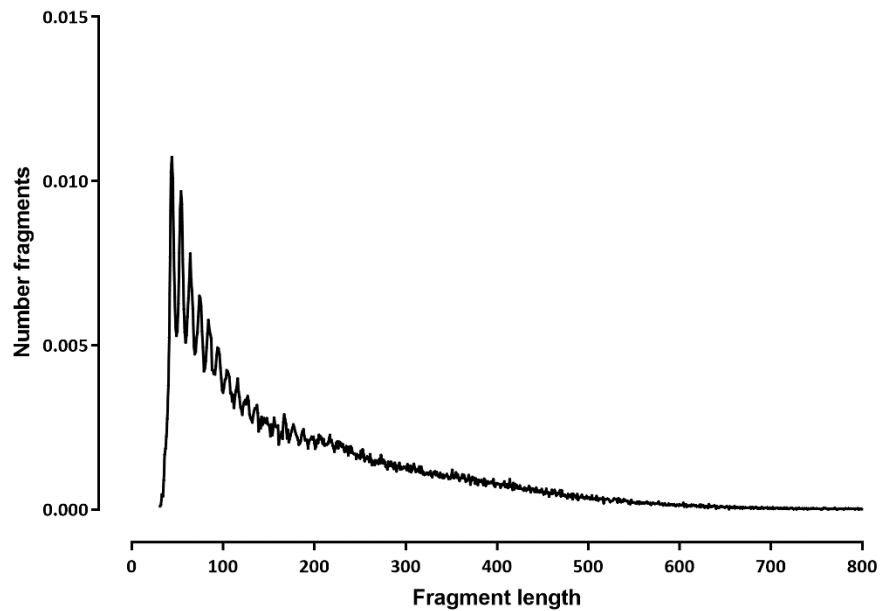


OVARY LIBRARIES

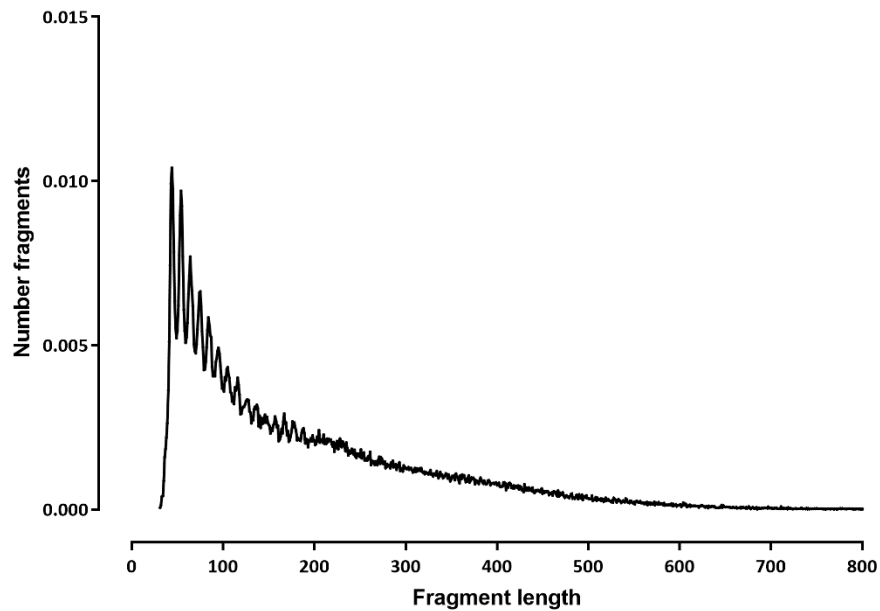
Ovary libraries ATAC

Species	Read Length	Library	Raw fragments	Unique non-chrM reads	Alignment fraction	Complexity	chrM reads	chrM fraction	scATAC dedup reads	scATAC dedup Complexity	TSS ratio	Cells >500 fragments
Cercocebus_torquatus-PD_0408	2x30	SK-L374-Ovary_Livers_ATAC_1	372,208	423,324	0.57	0.96	3,060	0.01				4.63
Cercocebus_torquatus-PD_0408	2x30	SK-L375-Ovary_Livers_ATAC_2	400,186	455,464	0.57	0.96	3,524	0.01				4.96
Cercocebus_torquatus-PD_0408	2x30	SK-L376-Ovary_Livers_ATAC_3	303,548	348,648	0.58	0.96	2,560	0.01				4.93
Cercocebus_torquatus-PD_0408	2x30	SK-L377-Ovary_Livers_ATAC_4	379,893	435,686	0.58	0.96	3,082	0.01				4.74
Cercocebus_torquatus-PD_0408	2x30	SK-L378-Ovary_Livers_ATAC_5	17,175	102	0.00	0.82	0	0.00				
Cercocebus_torquatus-PD_0408	2x30	SK-L379-Ovary_Livers_ATAC_6	661	50	0.04	1.00	0	0.00				
Chlorocebus_pygerythrus-PD_0173	2x30	SK-L374-Ovary_Livers_ATAC_1	372,208	464,694	0.67	0.96	34,016	0.07				5.20
Chlorocebus_pygerythrus-PD_0173	2x30	SK-L375-Ovary_Livers_ATAC_2	400,186	502,992	0.67	0.96	36,678	0.07				5.54
Chlorocebus_pygerythrus-PD_0173	2x30	SK-L376-Ovary_Livers_ATAC_3	303,548	382,566	0.67	0.96	26,694	0.07				5.78
Chlorocebus_pygerythrus-PD_0173	2x30	SK-L377-Ovary_Livers_ATAC_4	379,893	481,286	0.68	0.96	34,056	0.07				5.28
Chlorocebus_pygerythrus-PD_0173	2x30	SK-L378-Ovary_Livers_ATAC_5	17,175	94	0.00	0.81	0	0.00				
Chlorocebus_pygerythrus-PD_0173	2x30	SK-L379-Ovary_Livers_ATAC_6	661	40	0.03	1.00	0	0.00				

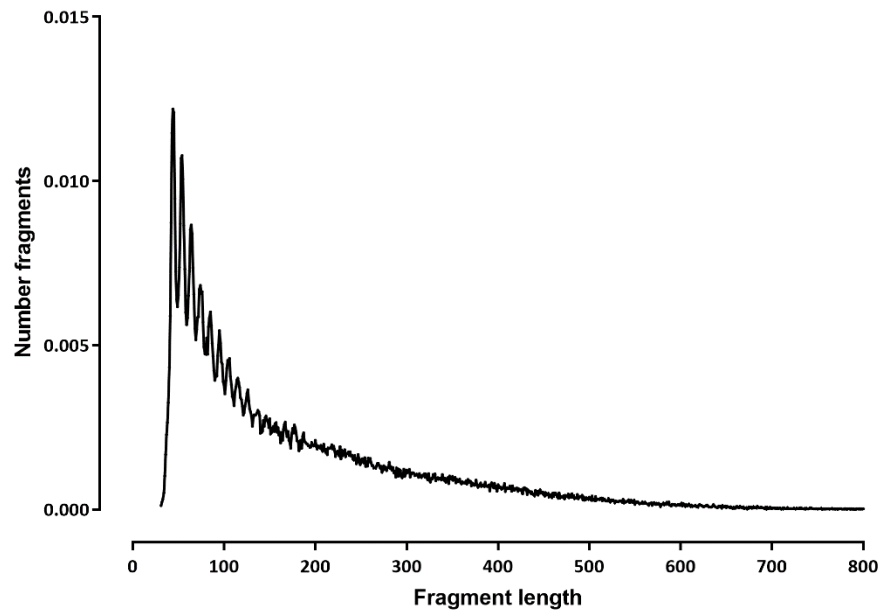
SK-L374-Ovary_Livers_ATAC_1 Cercocebus



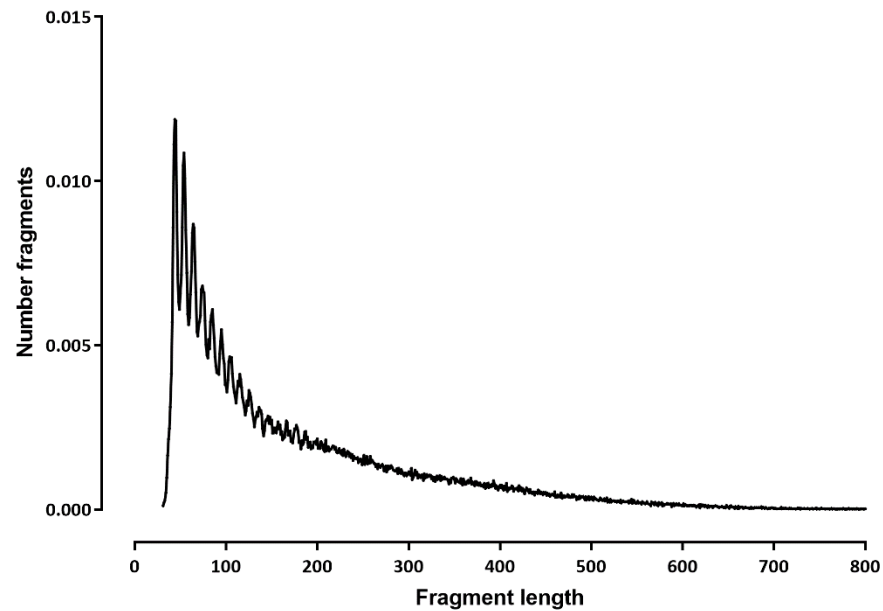
SK-L374-Ovary_Livers_ATAC_1 Chlorocebus



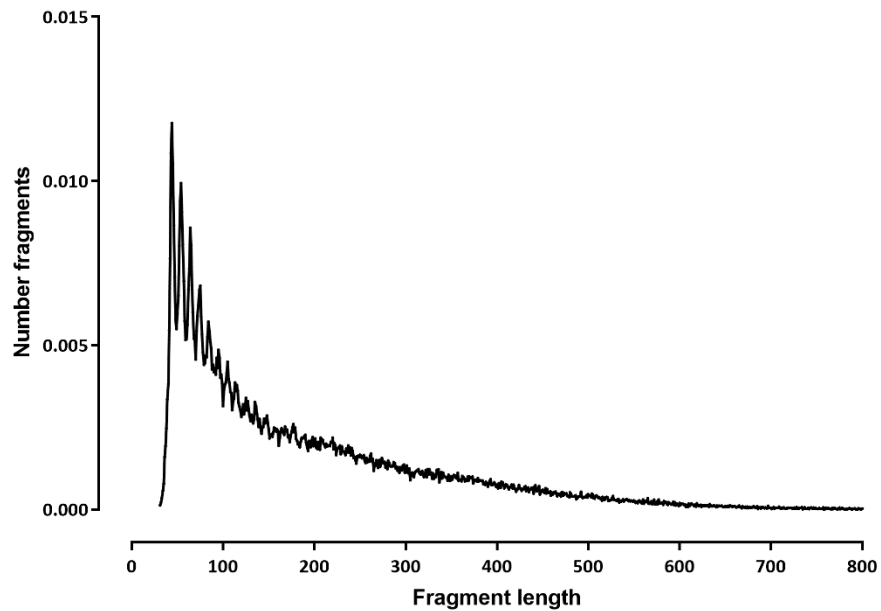
SK-L375-Ovary_Livers_ATAC_2 Cercocebus



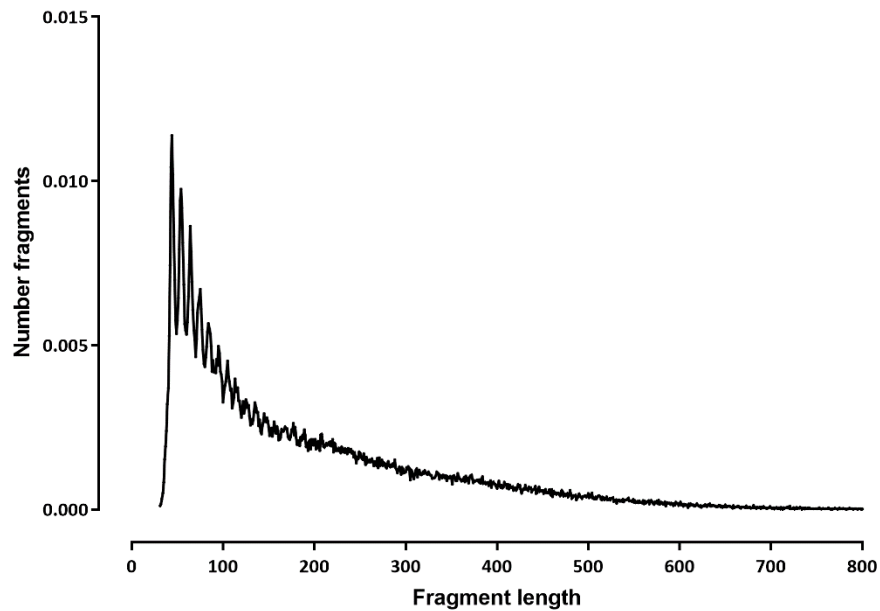
SK-L375-Ovary_Livers_ATAC_2 Chlorocebus



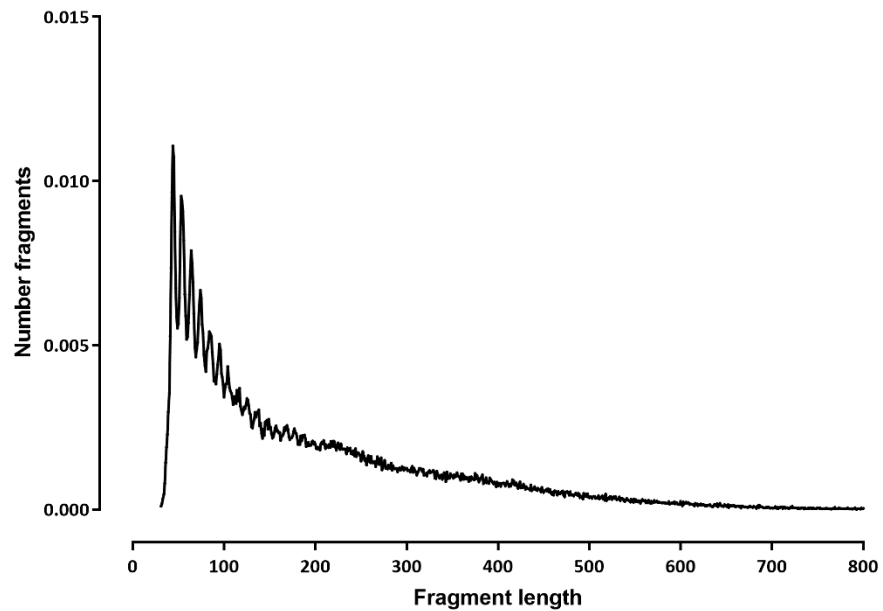
SK-L376-Ovary_Livers_ATAC_3 Cercocebus



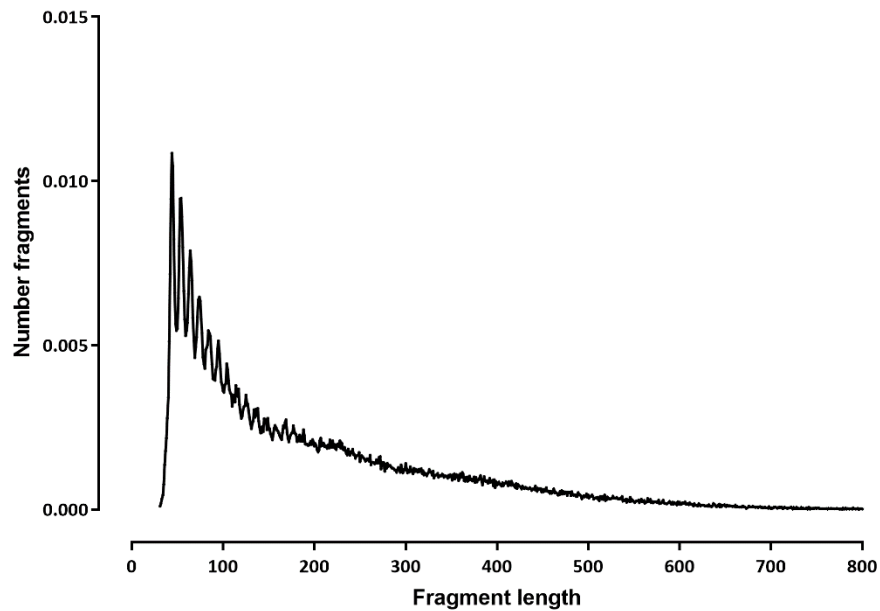
SK-L376-Ovary_Livers_ATAC_3 Chlorocebus



SK-L377-Ovary_Livers_ATAC_4 Cercocebus



SK-L377-Ovary_Livers_ATAC_4 Chlorocebus



PROPOSAL FOR NEXT STEPS

- Not all samples work reliably.
- We have identified fragment distribution (specifically, the lack of a clear nucleosomal peak as a clear correlate of poor single-cell separation, which allows us to QC samples before committing to large-scale sequencing runs
- However, for now brain appears to work best and the current proposal is to focus on it for the initial study out of this project
- The goal is to do very deep ($>5x$ the cell number we have now) brain profiling for as many species as we can.
- The question is how many brains can be obtained and for what other species?