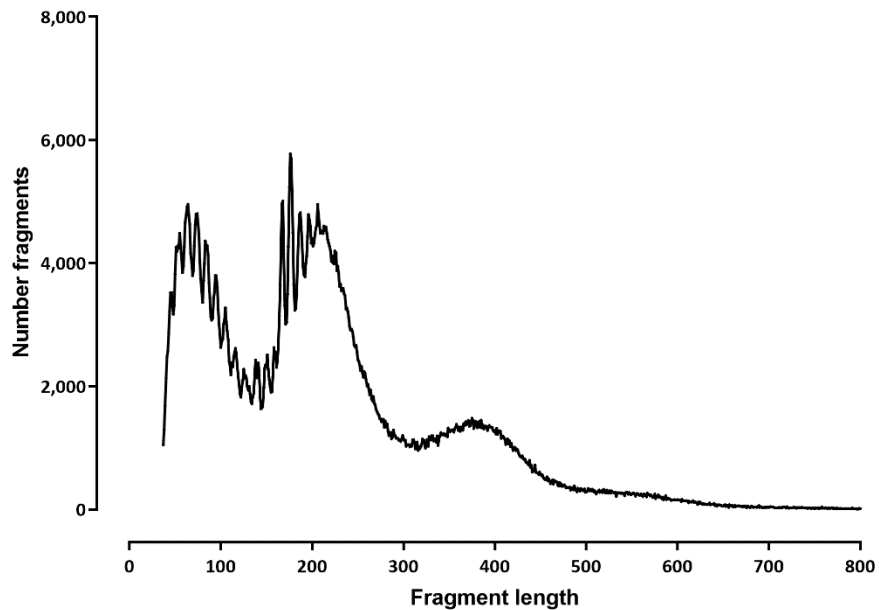


# MAPPING STATS

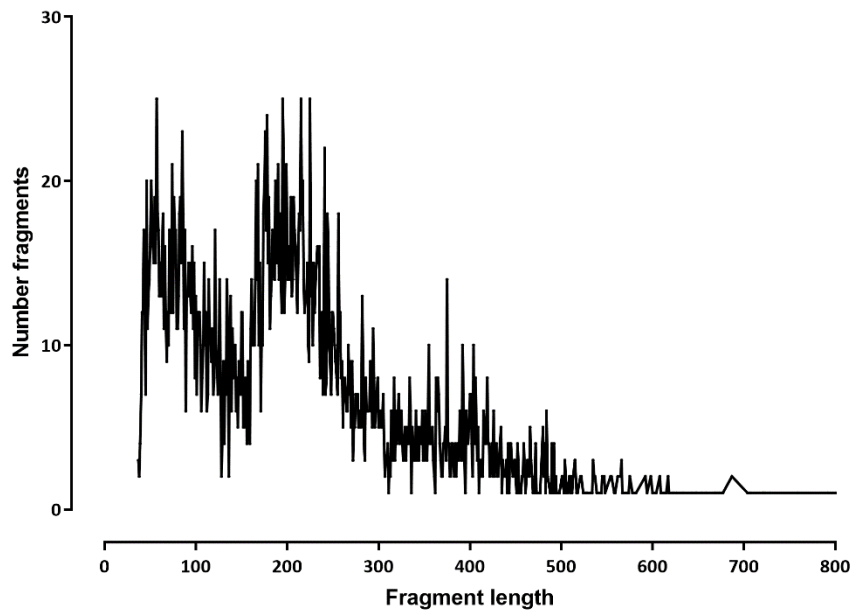
Aligned against	Read Length	Library	Raw fragments	Unique non-chrM reads	Multi reads	Complexity	chrM reads	chrM fraction	Unique non-chrM reads after dedup	TSS ratio	MACS default peaks	FRIP (MACS)
<b>Ovis aries</b>	<b>2x36</b>	L2311-Ovis_aries-Sample4590-rep1	1,883,877	2,062,188		0.96			2,015,032	6.86	14,905	164,152
<b>Oryx dammah</b>	<b>2x36</b>	L2319-Oryx_dammah-Sample4594-rep1	11,228	7,866		0.99			7,806		0	0
<b>Enhydra lutris</b>	<b>2x36</b>	L2365-Enhydra_lutris-Sea_otter-Sample4528-rep3	24,505,420	39,887,288		0.94			38,313,060		25,230	57,902
<b>Prionailurua viverrina</b>	<b>2x36</b>	L2400-Prionailurua_viverrina-Fishing_cat-Sample4521-rep3	7,275,034	12,563,798		0.95			12,216,658		39,579	142,663
<b>Cercocebus torquatus lunulatus</b>	<b>2x36</b>	L2428-Cercocebus_torquatus_lunulatus-Collared_mangabey-Sample4443-rep3	4,533,334	6,826,886		0.92			6,592,596	8.63	37,127	364,736

# FRAGMENT LENGTH

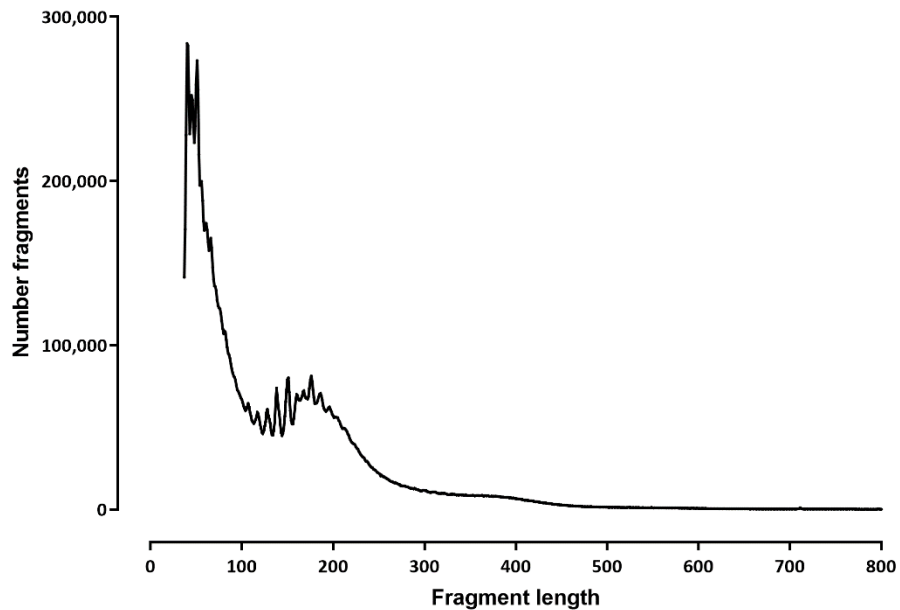
L2311-Ovis\_aries-Sample4590-rep1



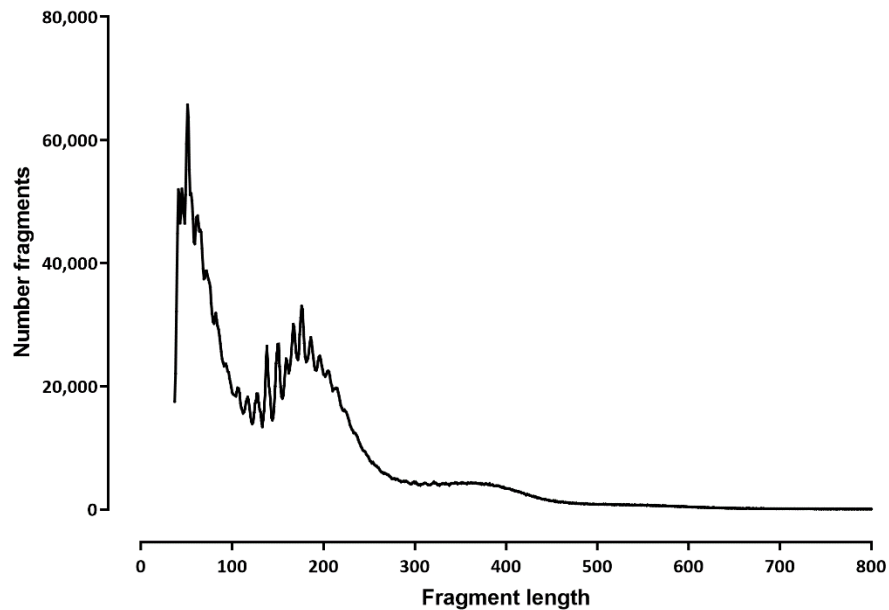
L2319-Oryx\_dammah-Sample4594-rep1



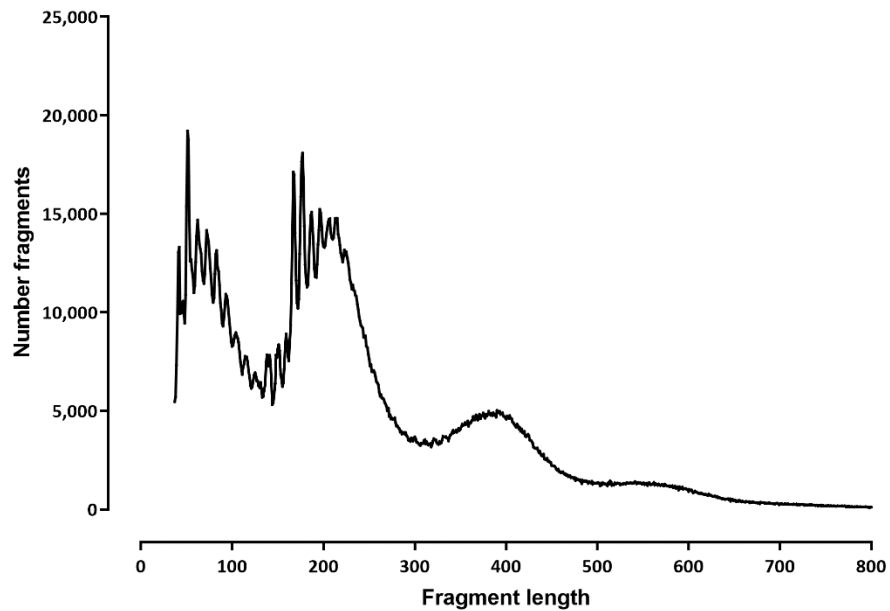
L2365-Enhydra\_lutris-Sea\_otter-Sample4528-rep3



L2400-Prionailurua\_viverrina-Fishing\_cat-Sample4521-rep3

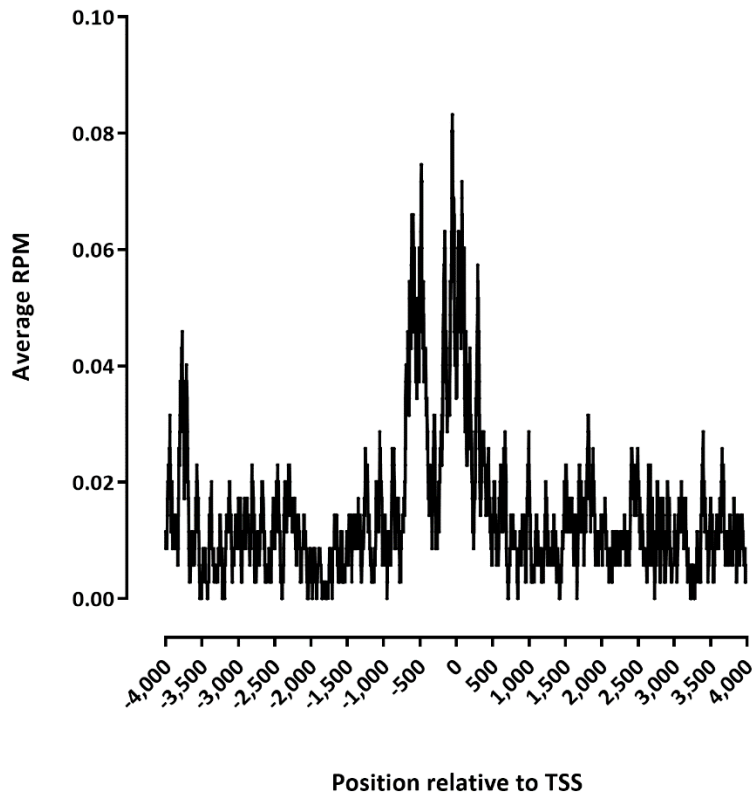


L2428-Cercocebus\_torquatus\_lunulatus-Collared\_mangabey-Sample4443-rep3



# TSS PROFILE

L2311-Ovis\_aries-Sample4590-rep1



L2428-Cercocebus\_torquatus\_lunulatus-Collared\_mangabey-Sample4443-rep3

