

SPECIES DONE THIS ROUND:

Allochrocebus_lhoesti
Ametrida_centurio
Arctocephalus_forsteri
Balaenoptera_borealis
Caracal_caracal
Catopuma_temminckii
Cercocebus_torquatus_lunulatus
Cercopithecus_ascanius_schmidti
Cercopithecus_cephus
Cercopithecus_petaurista
Cercopithecus_wolfi
Cerradomys_subflavus
Enhydra_lutris
Herpestes_ichneumon
Lemmiscus_curtatus
Leopardus_paradalis
Leopardus_tigrinus
Leopardus_wiedii
Lepus_californicus
Lepus_townsendiis

Marmota_monax
Meles_meles
Microtus_miurus
Microtus_oregoni
Neovison_vison
Nomascus_concolor
Oryx_dammah
Osphranter_robustus-
Otocolobus_manul
Ovis_aries
Peromyscus_pectoralisa
Phocarctos_hookeri
Pipistrellus_abramus
Prionailurua_viverrina
Sigmodon_mascotensis
Sylvilagus_aquaticus
Sylvilagus_nuttallii
Taxidea_taxus
Tupaia_minor
Urocyon_littoralis

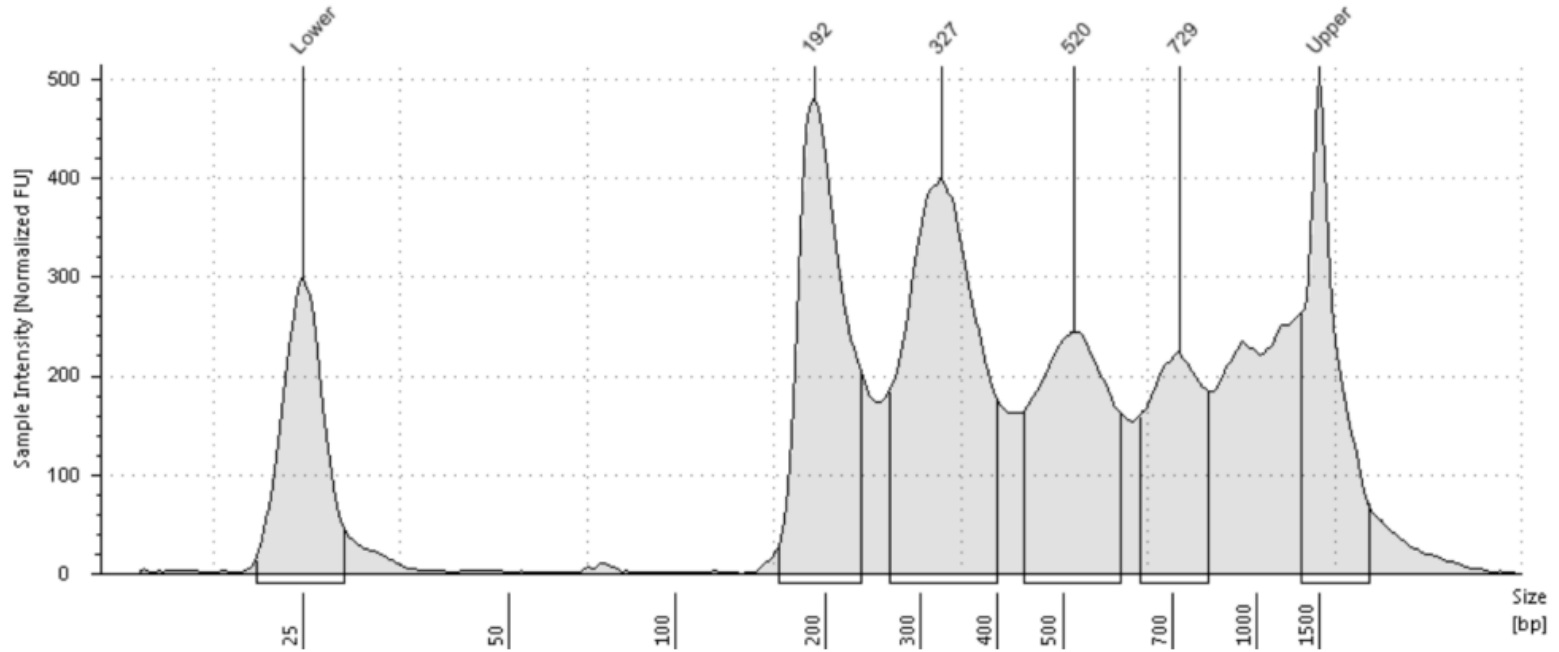
Note: there was a tube labelled “common wallaroo” (Osphranter robustus), which wasn’t in the lists of what was sent.

- Previous libraries were done as plateATAC by Arwa
- These were done by me with the usual omniATAC protocol in tubes (Arwa is gone)
- Did several tests on frozen cells to make sure protocol is working before proceeding with the full run
- Did more than two replicates as insurance, as previously we had some dropouts when we were doing only 2 reps per species

Otocolobus_manul

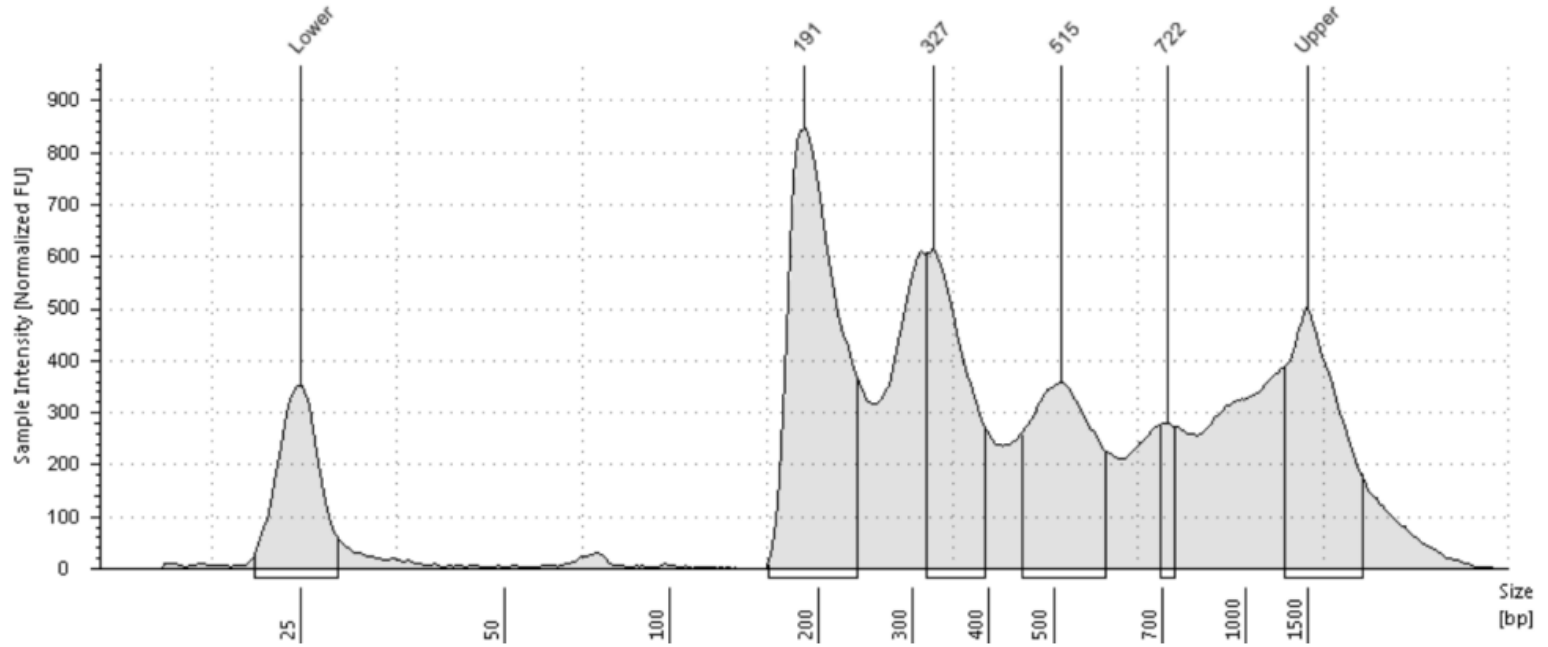


A1: L2385



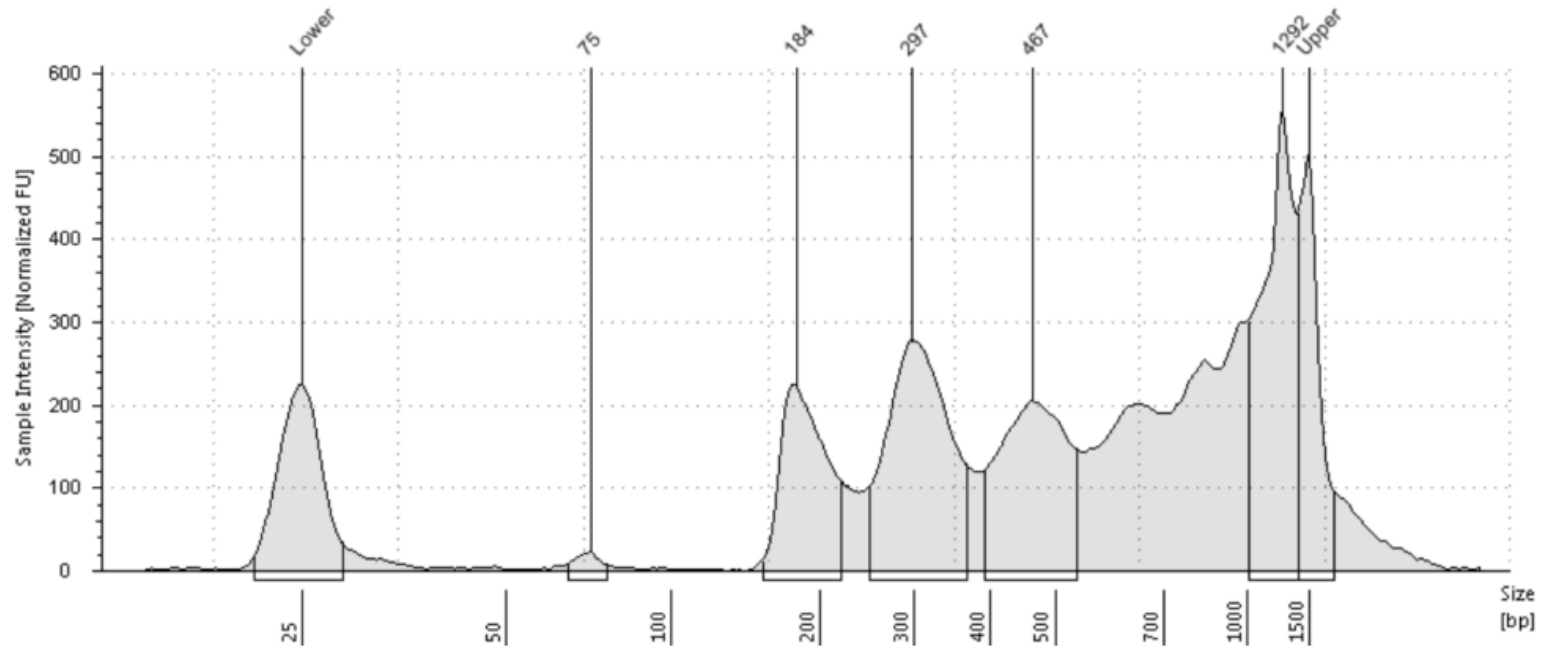


B1: L2389



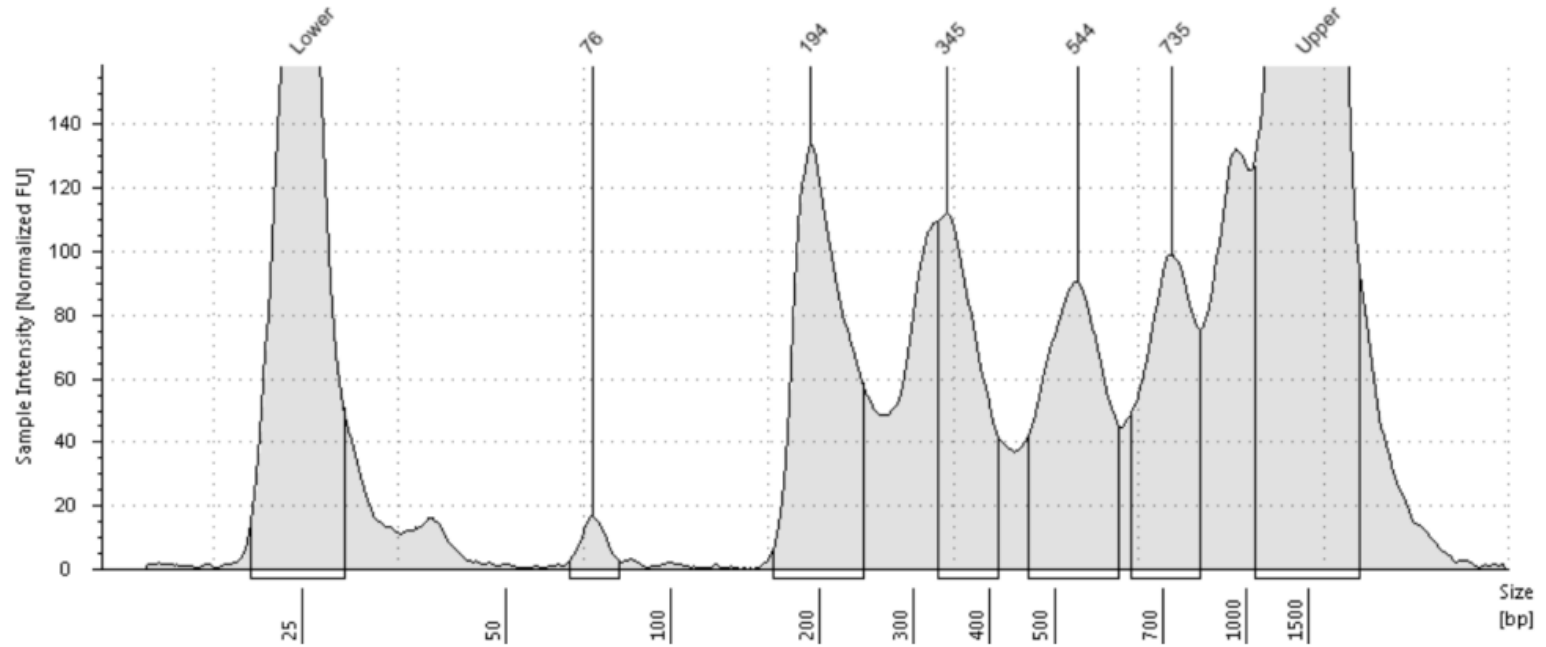
Sigmodon_mascotensis

C1: L2392



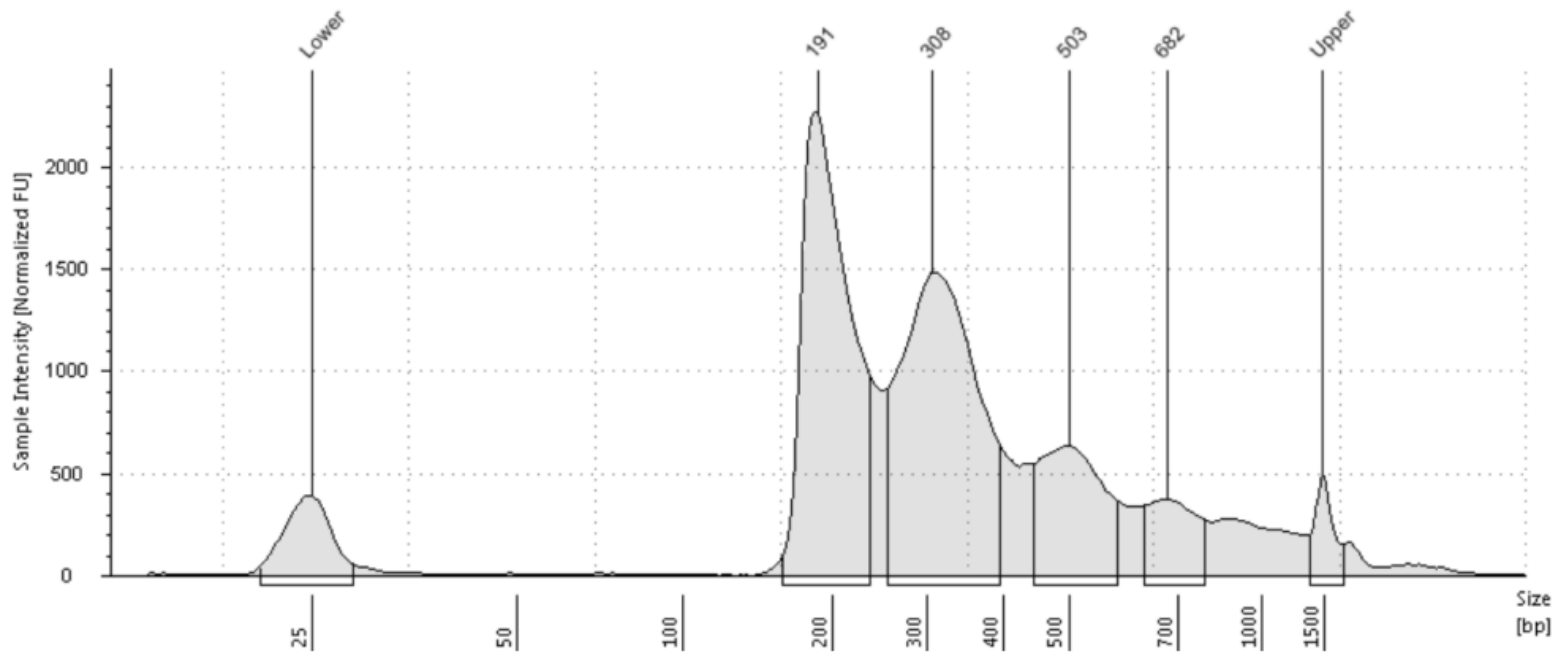
Cercopithecus_ascanius_schmidti

D1: L2396



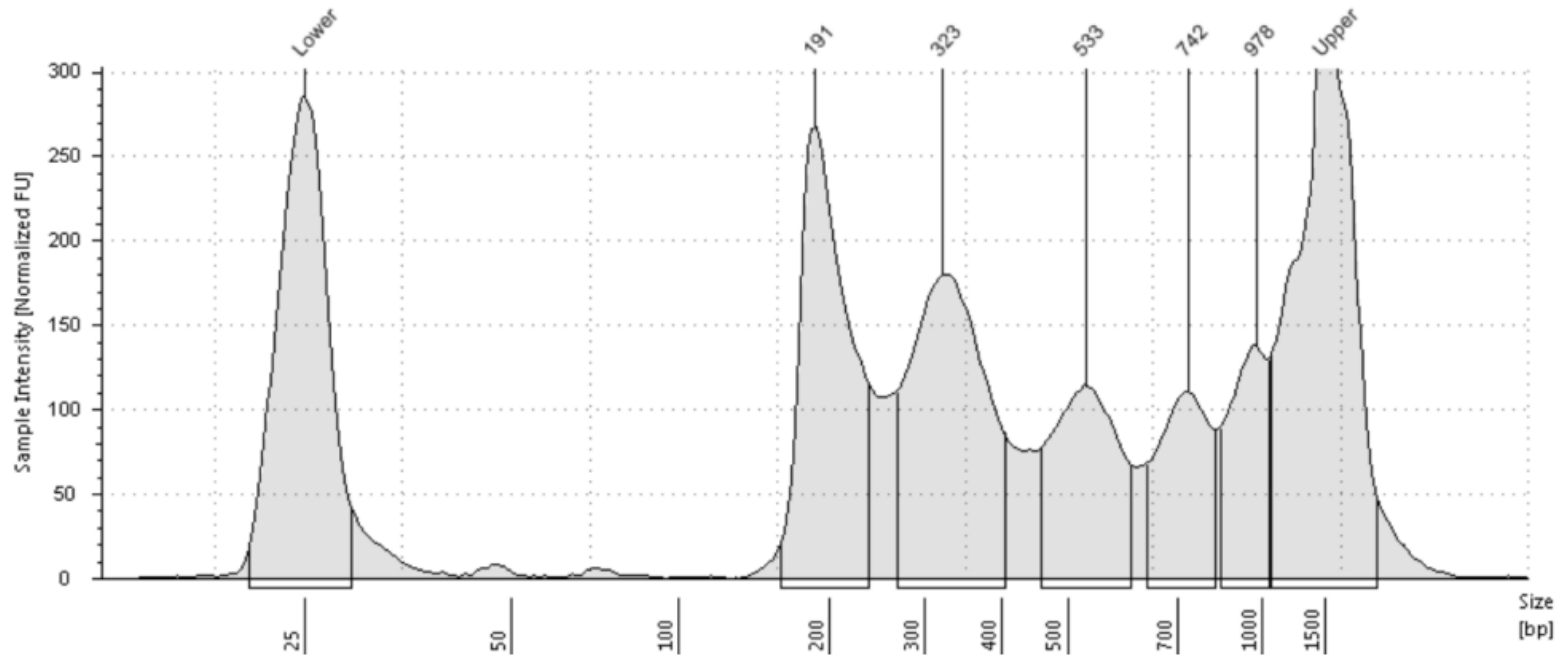
Prionailurua_viverrina

E1: L2400



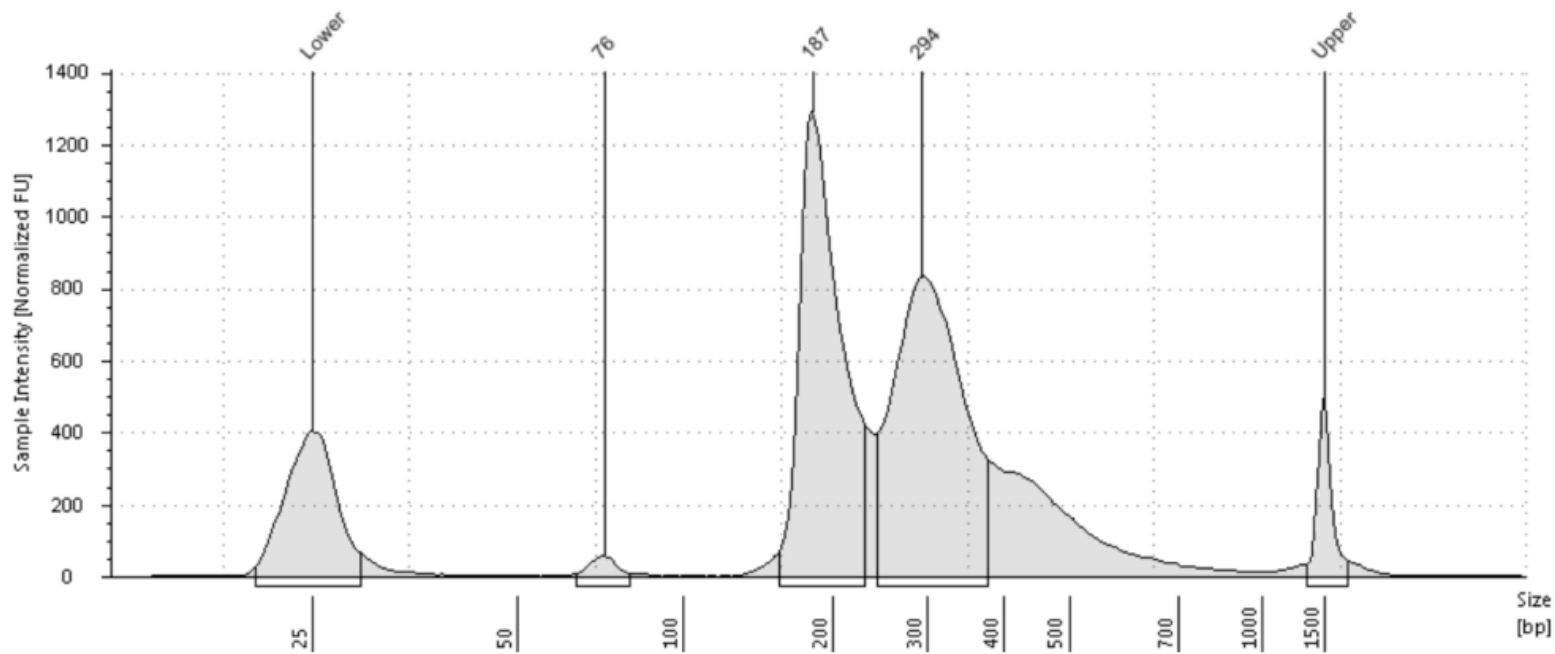
Arctocephalus_forsteri

F1: L2404



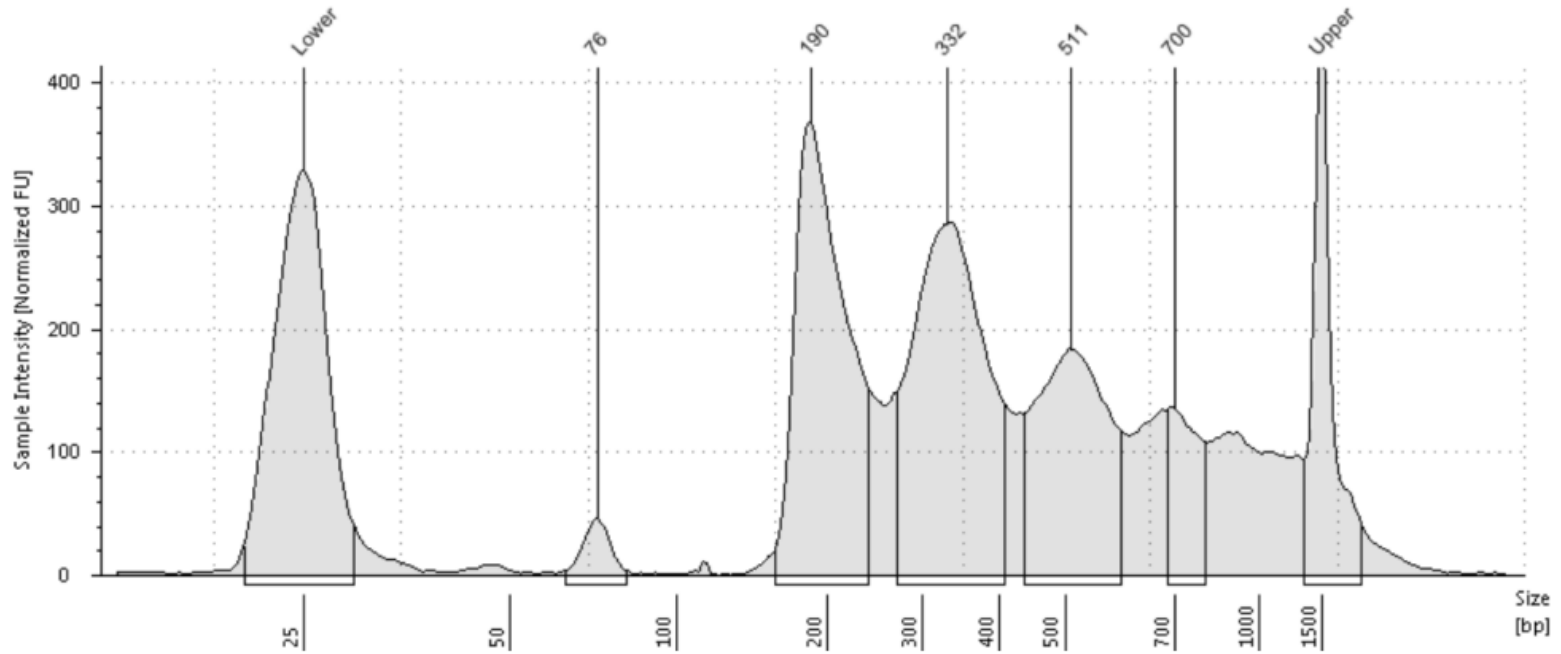
Urocyon_littoralis

G1: L2408



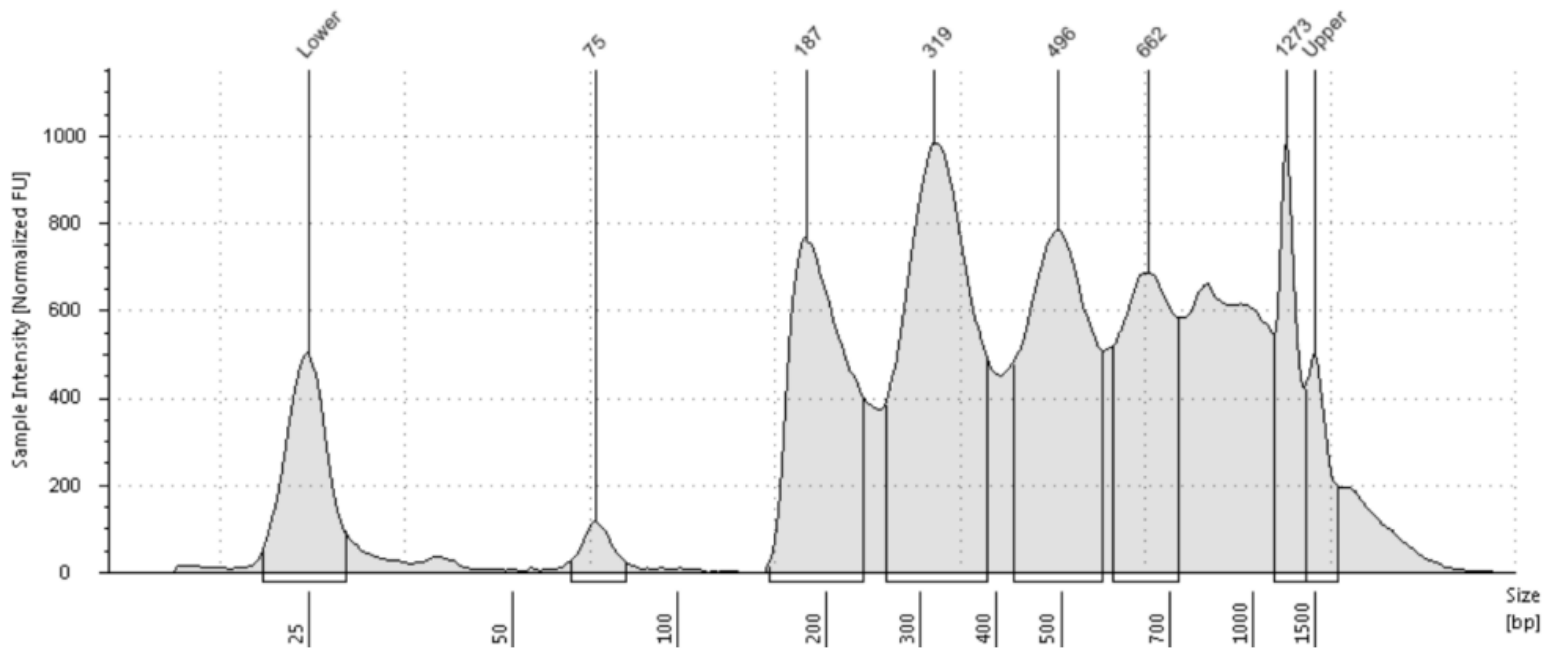
Leopardus_paradalis

HI: L2412



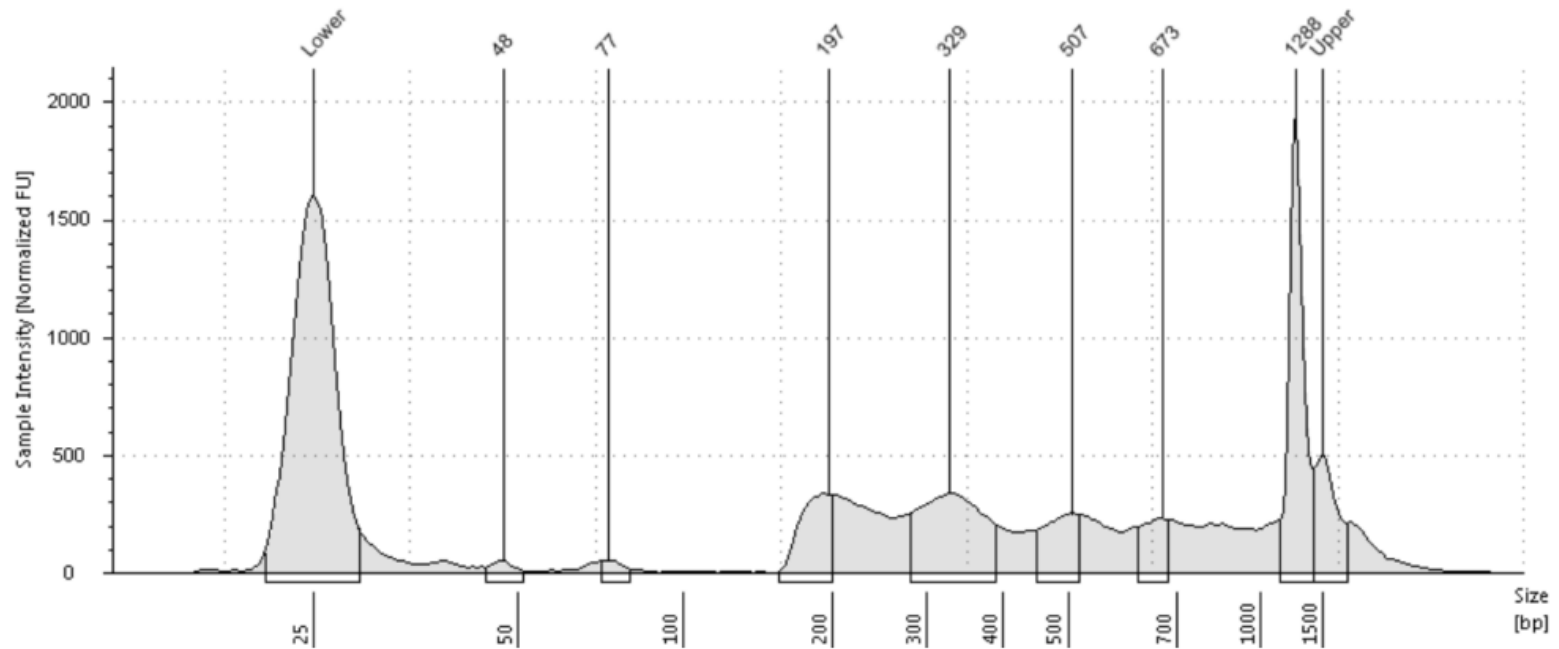
Sylvilagus_aquaticus

A2: L2416



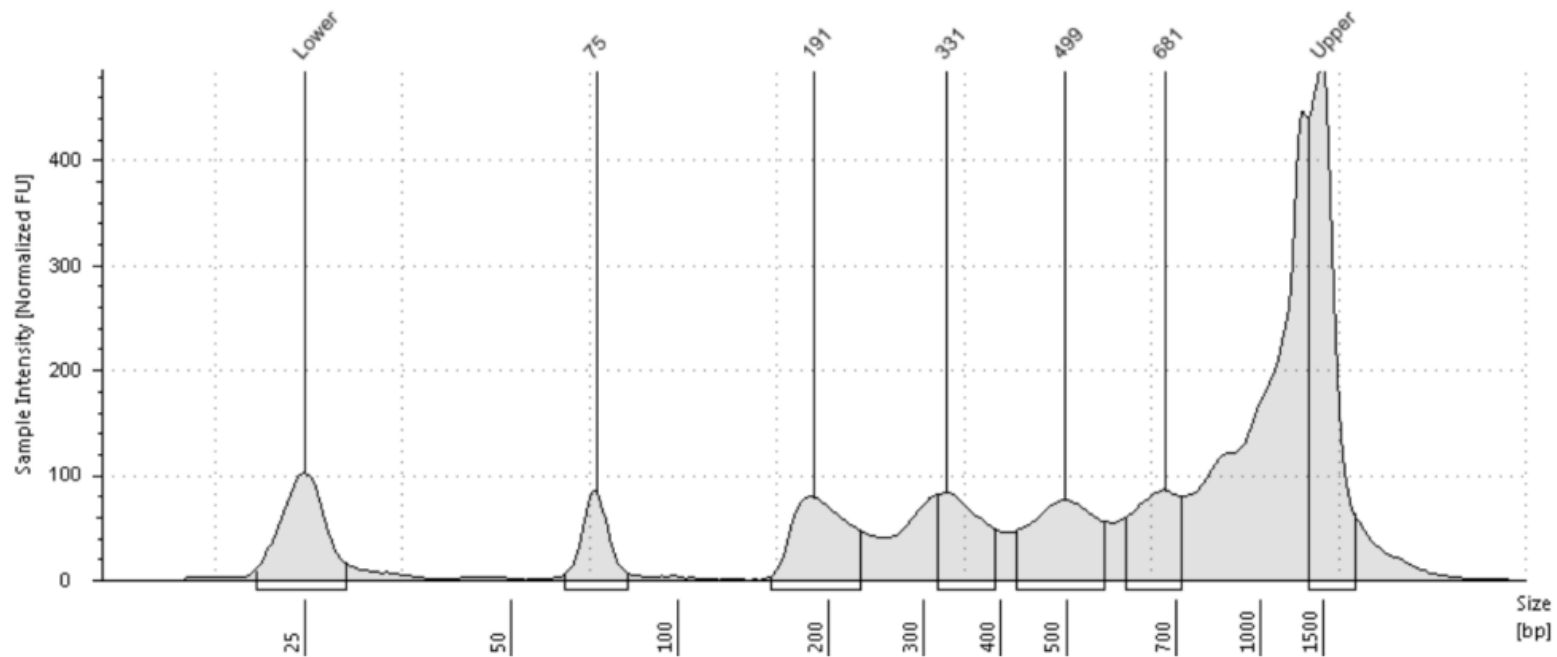
Cercopithecus_petaurista

B2: L2420



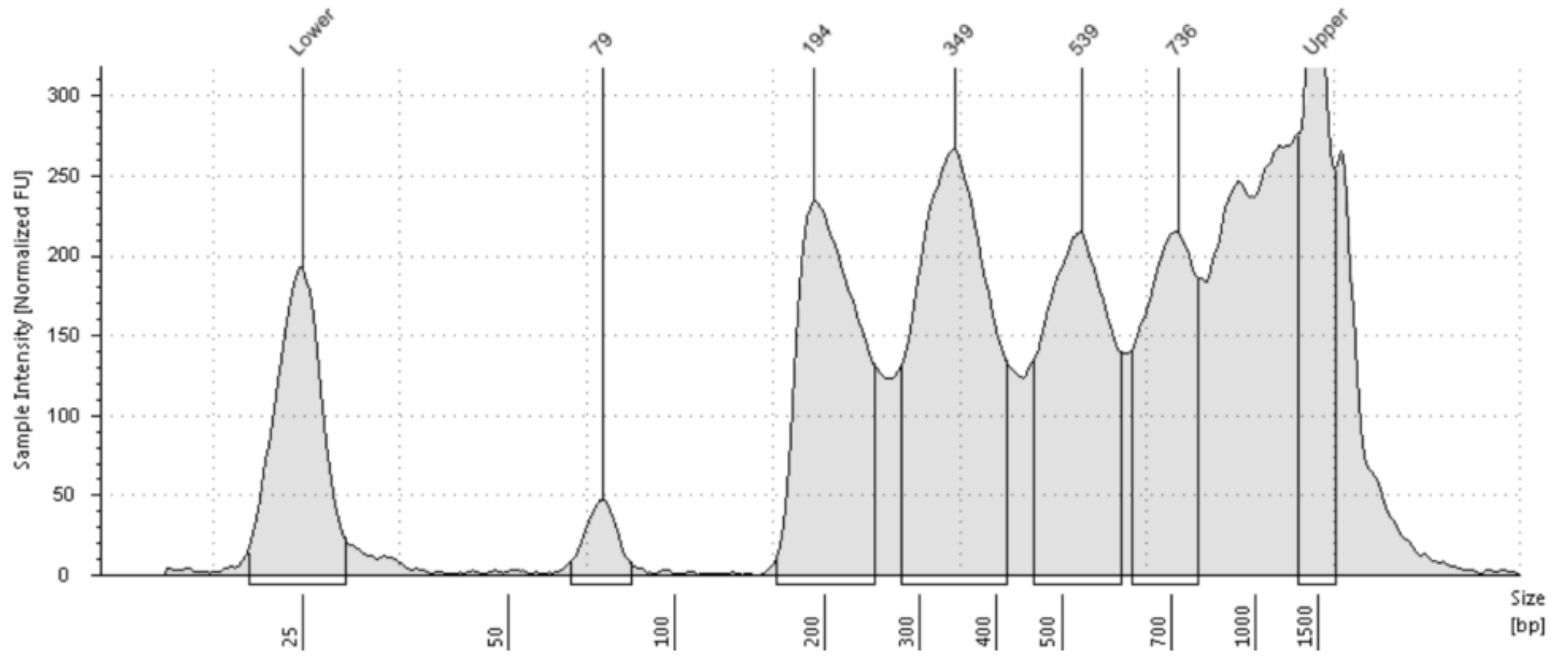
Lemmiscus_curtatus

C2: L2424



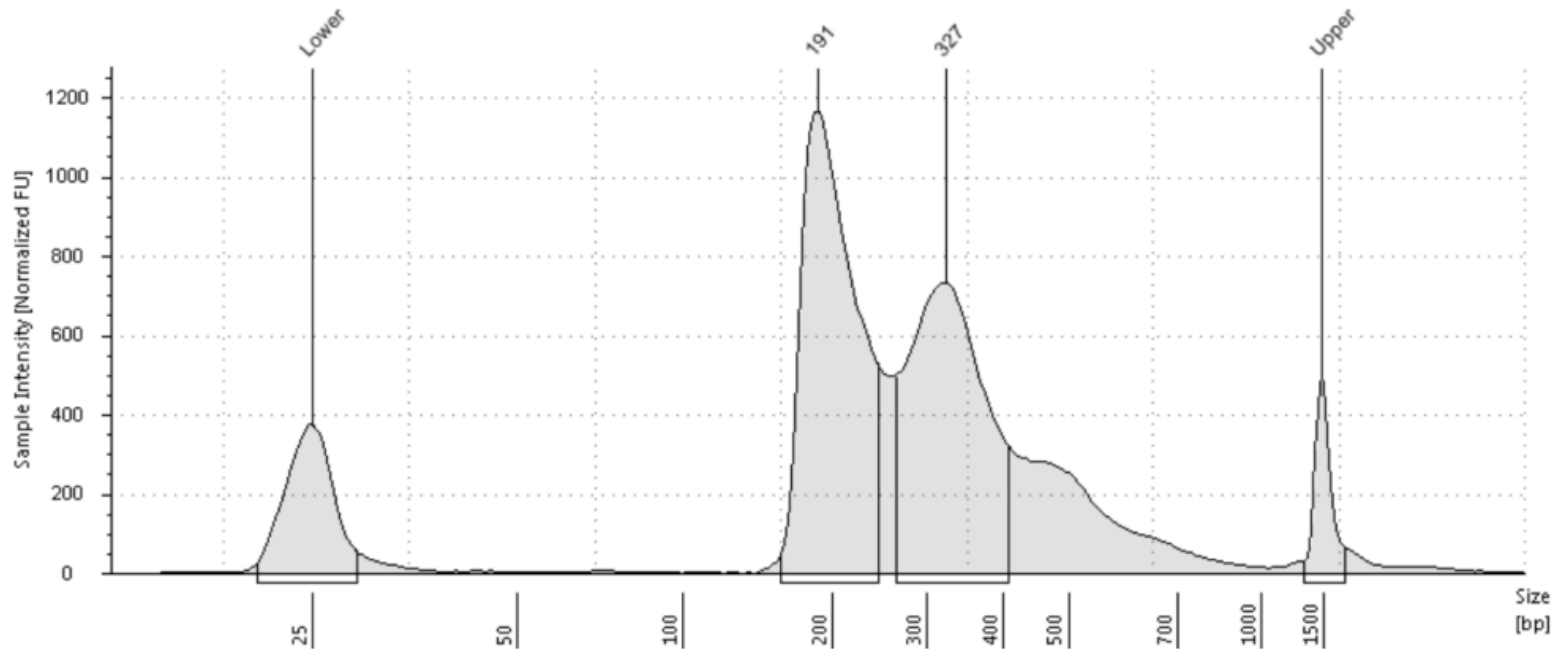
Cercocebus_torquatus_lunulatus

D2: L2428



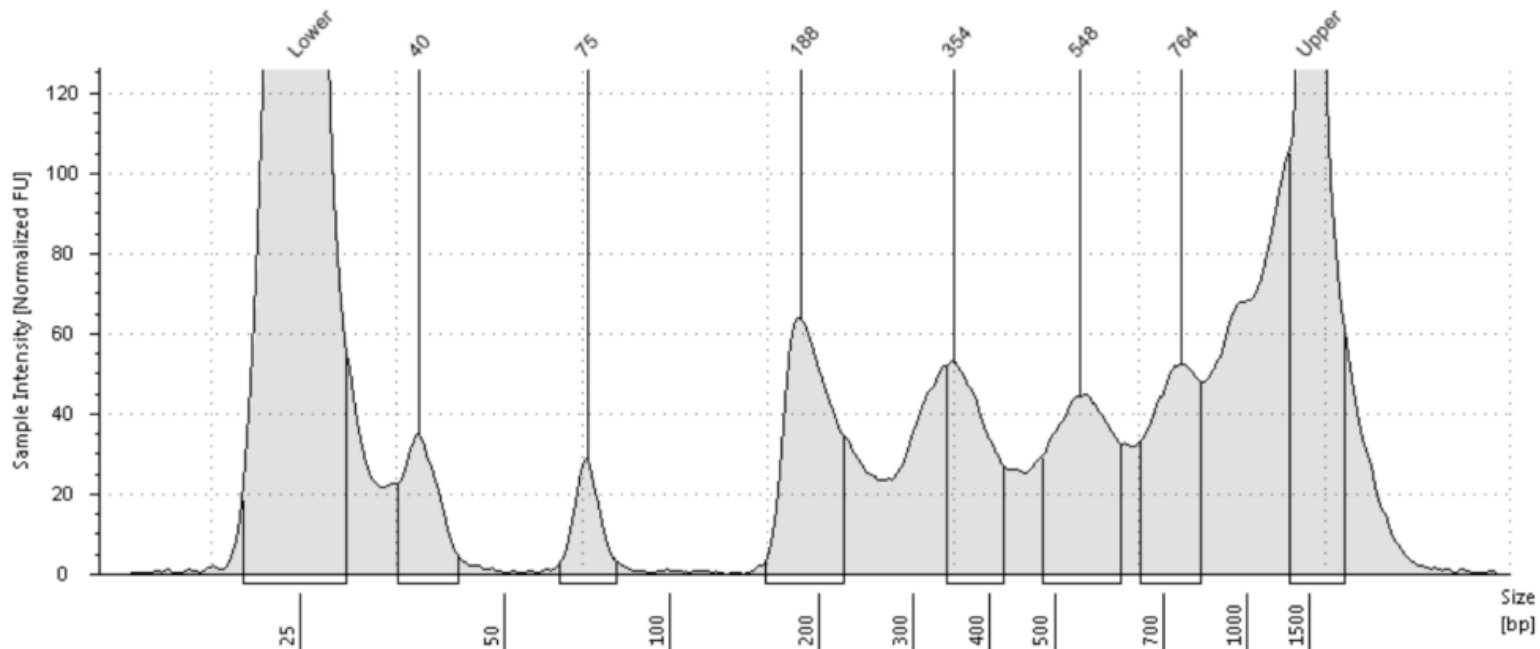
Catopuma_temminckii

E2: L2432



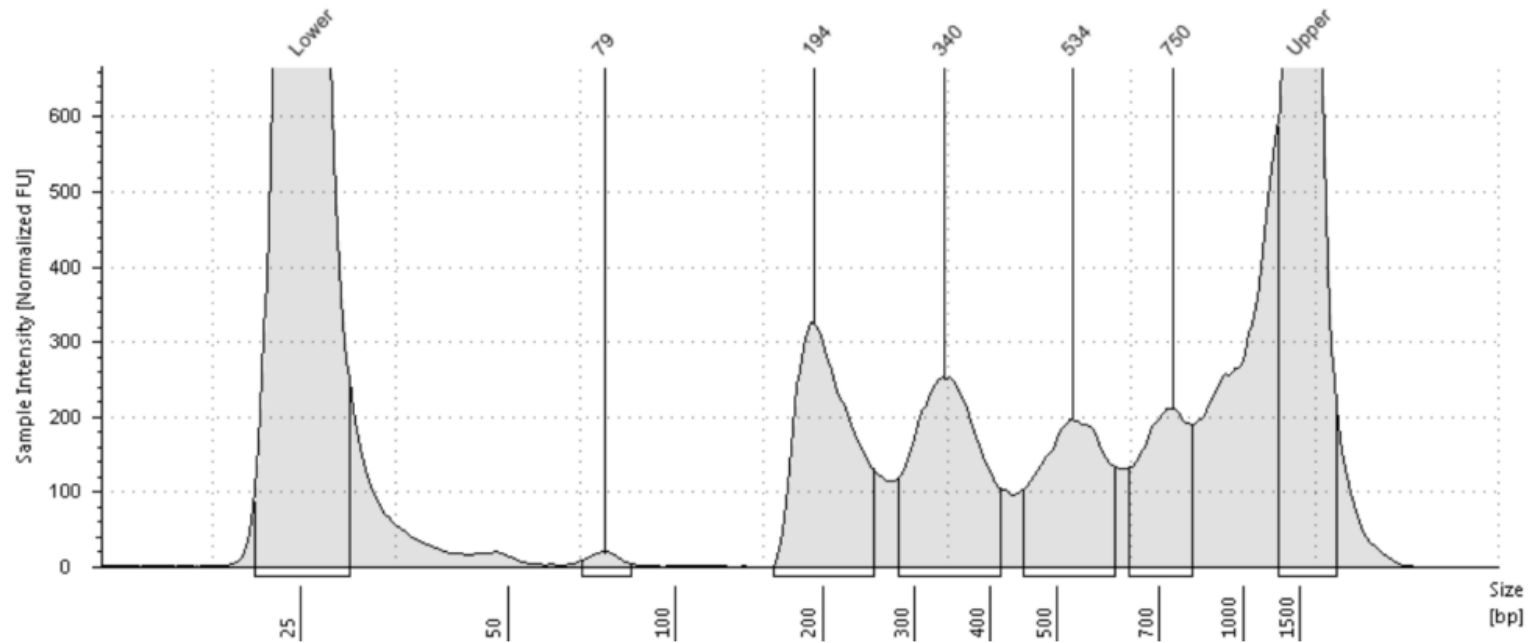
Phocarctos_hookeri

F2: L2436



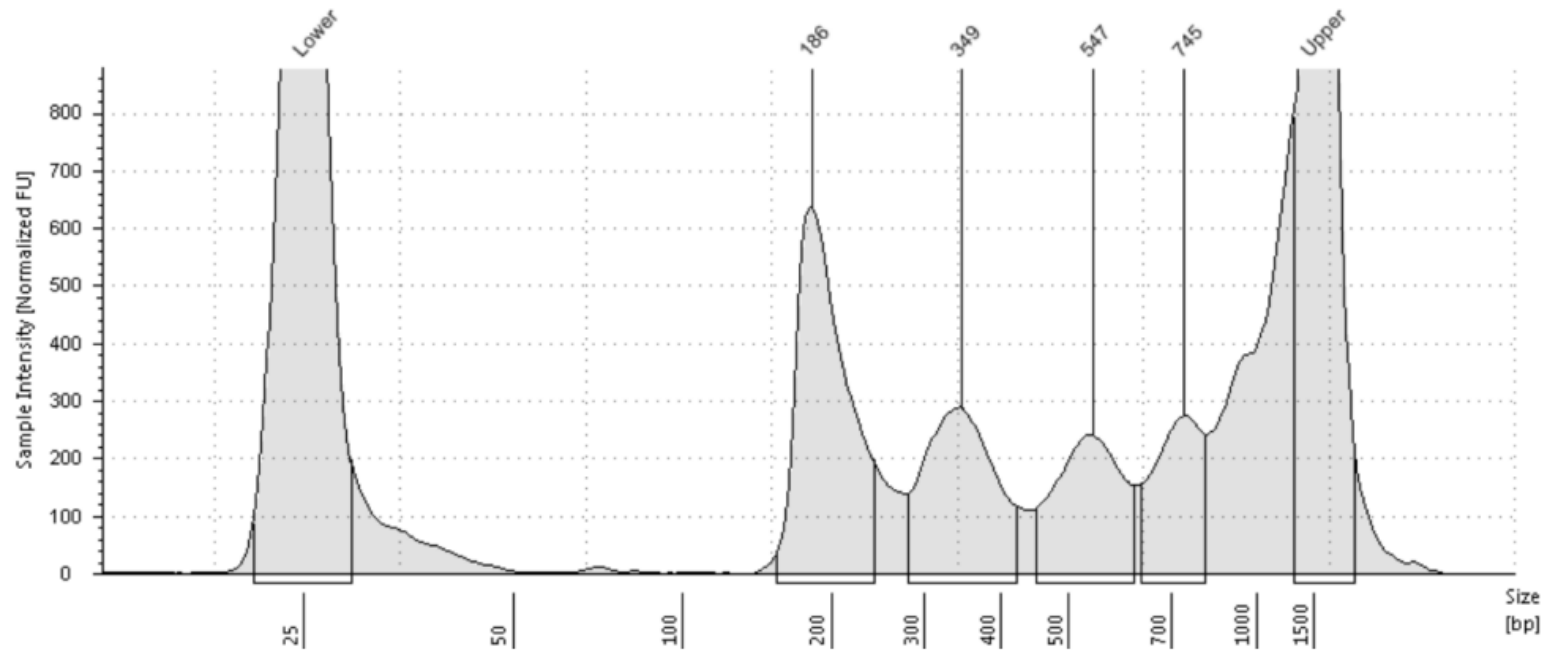
Oryx_dammah

A1: L2319



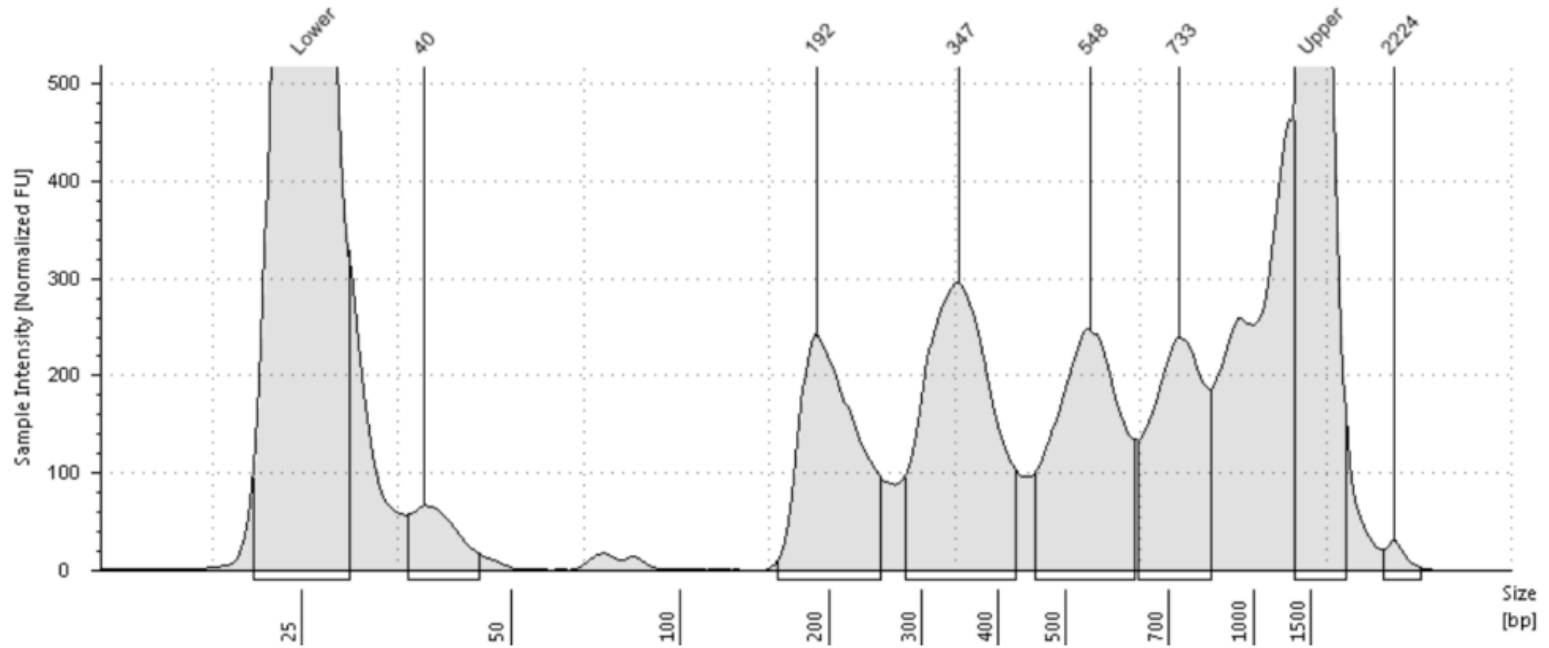
Pipistrellus_abramus

HI: L2326



Cercopithecus_cephus

F1: L2316



Ovis_aries

B1: L2312

