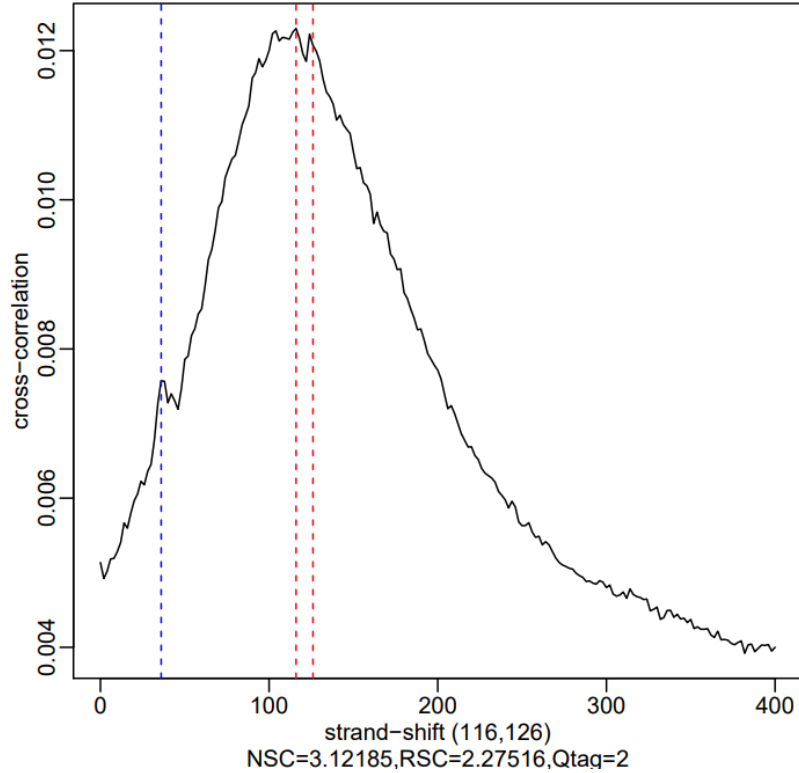


Mapping stats

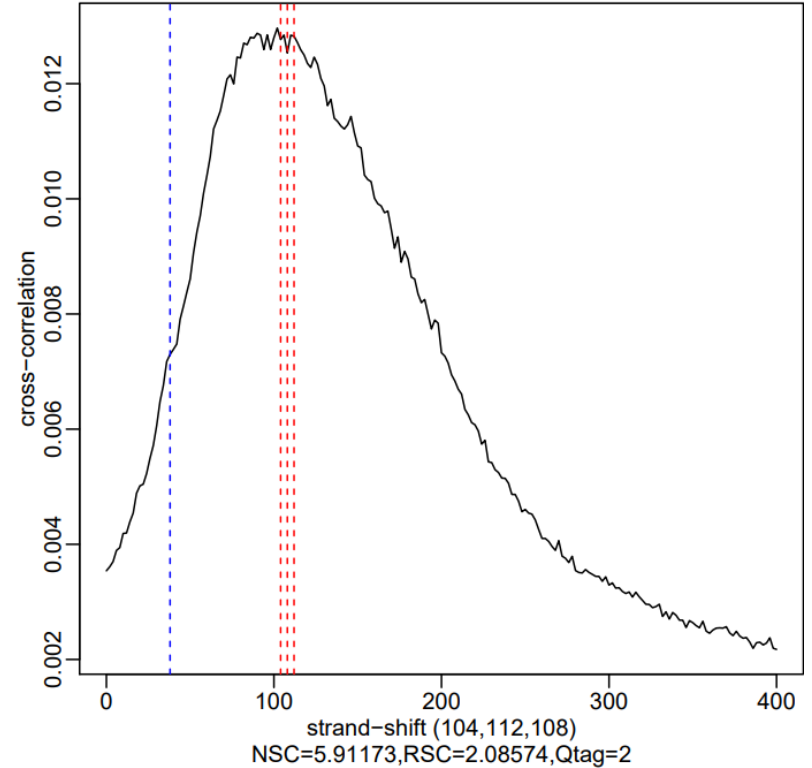
Species	#	Raw fragments	Read Length	Unique	Unique dedup	Multi	Fraction aligned	Complexity	NSC	RSC	QC	MACS2 NumPeaks	MACS2 RPM
hg38-male	L3702-K562_NRSF_test_CST	12,674,369	1x50	10,014,382			0.79	0.55	3.122	2.275	2	8,069	25,320
hg38-male	L3703-K562_NRSF_test_MA5-44189	11,989,398	1x50	7,532,468			0.63	0.25	5.912	2.086	2	4,771	24,763
hg38-male	L3704-K562_NRSF_test_MA5-35361	6,149,753	1x50	4,333,784			0.70	0.40	9.213	2.051	2	2,551	31,625
hg38-male	L3705-K562_NRSF_test_MA5-55715	8,185,487	1x50	6,494,585			0.79	0.51	4.179	3.019	2	2,074	10,684
hg38-male	L3706-K562_NRSF_test-ZR31455-25UL	12,765,672	1x50	10,274,939			0.80	0.56	3.308	3.003	2	24	627

Cross-correlation

L3702-K562_NRSF_test_CST.1x50mers.unique.bam

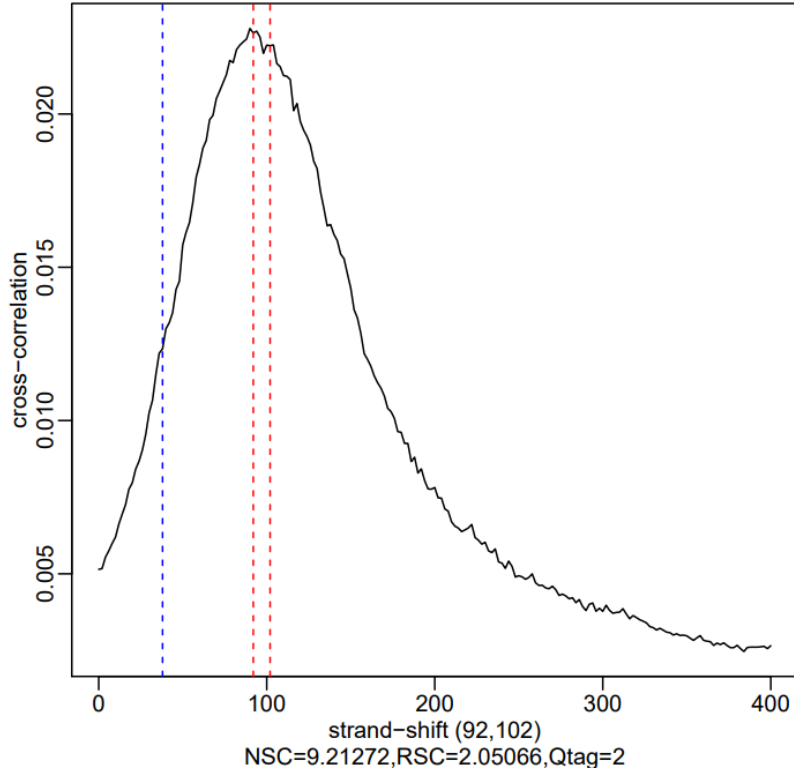


L3703-K562_NRSF_test_MA5-44189.1x50mers.unique.ba

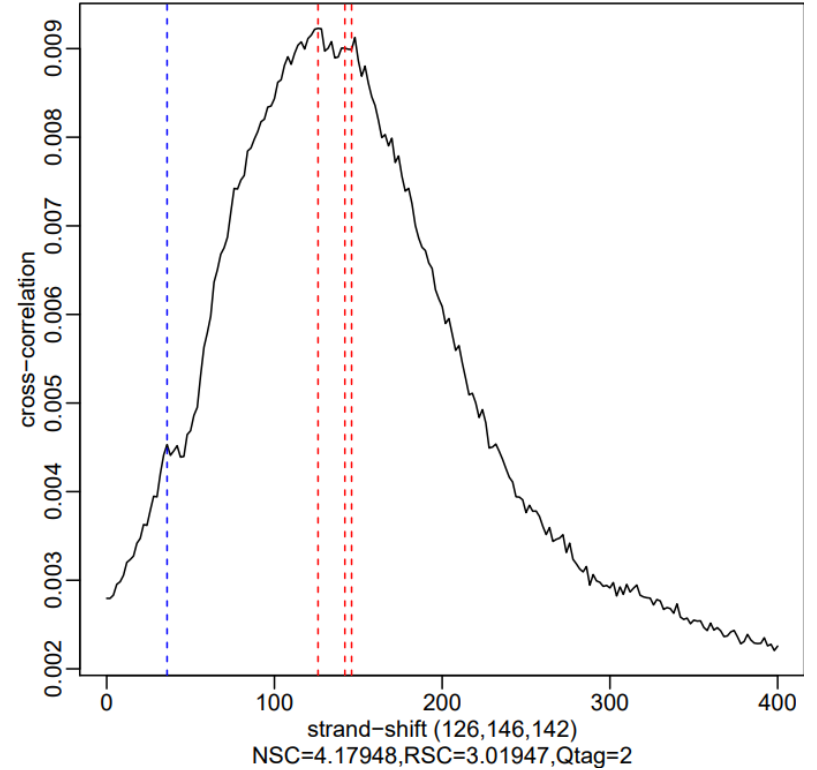


Cross-correlation

L3704-K562_NRSF_test_MA5-35361.1x50mers.unique.ba

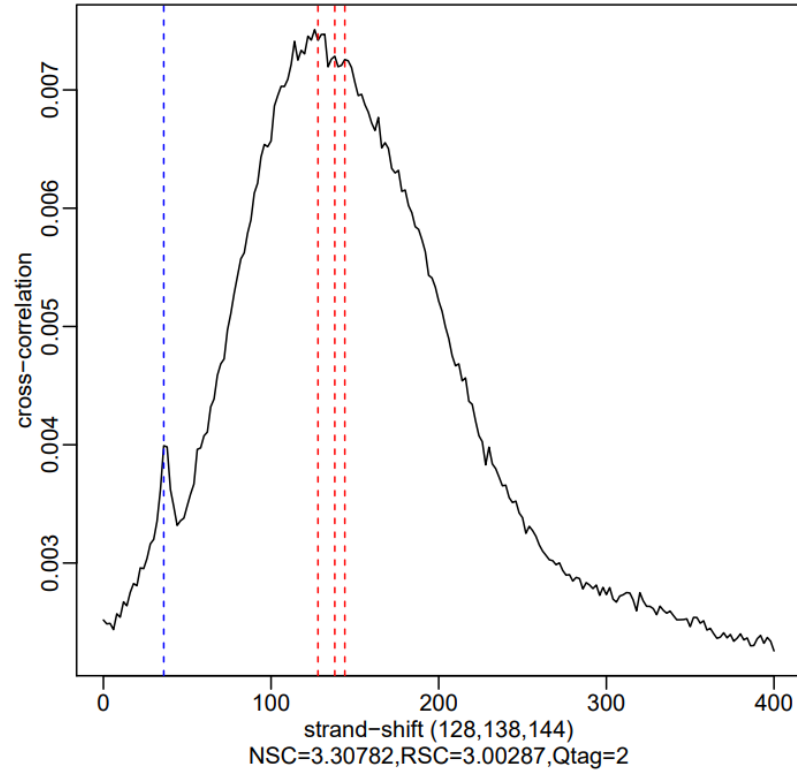


L3705-K562_NRSF_test_MA5-55715.1x50mers.unique.ba



Cross-correlation

L3706-K562_NRSF_test-ZR31455-25UL.1x50mers.unique.

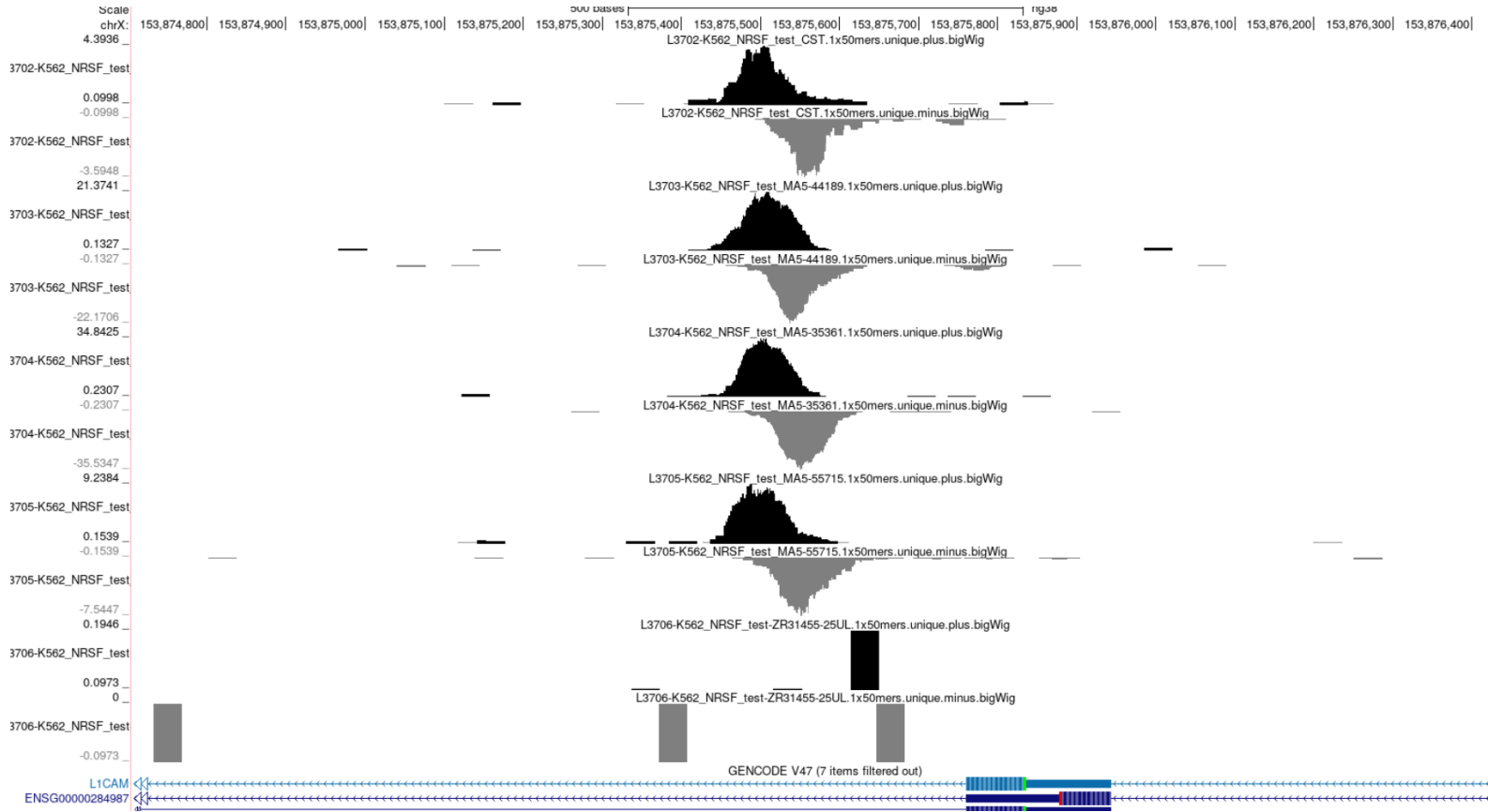


Overlap

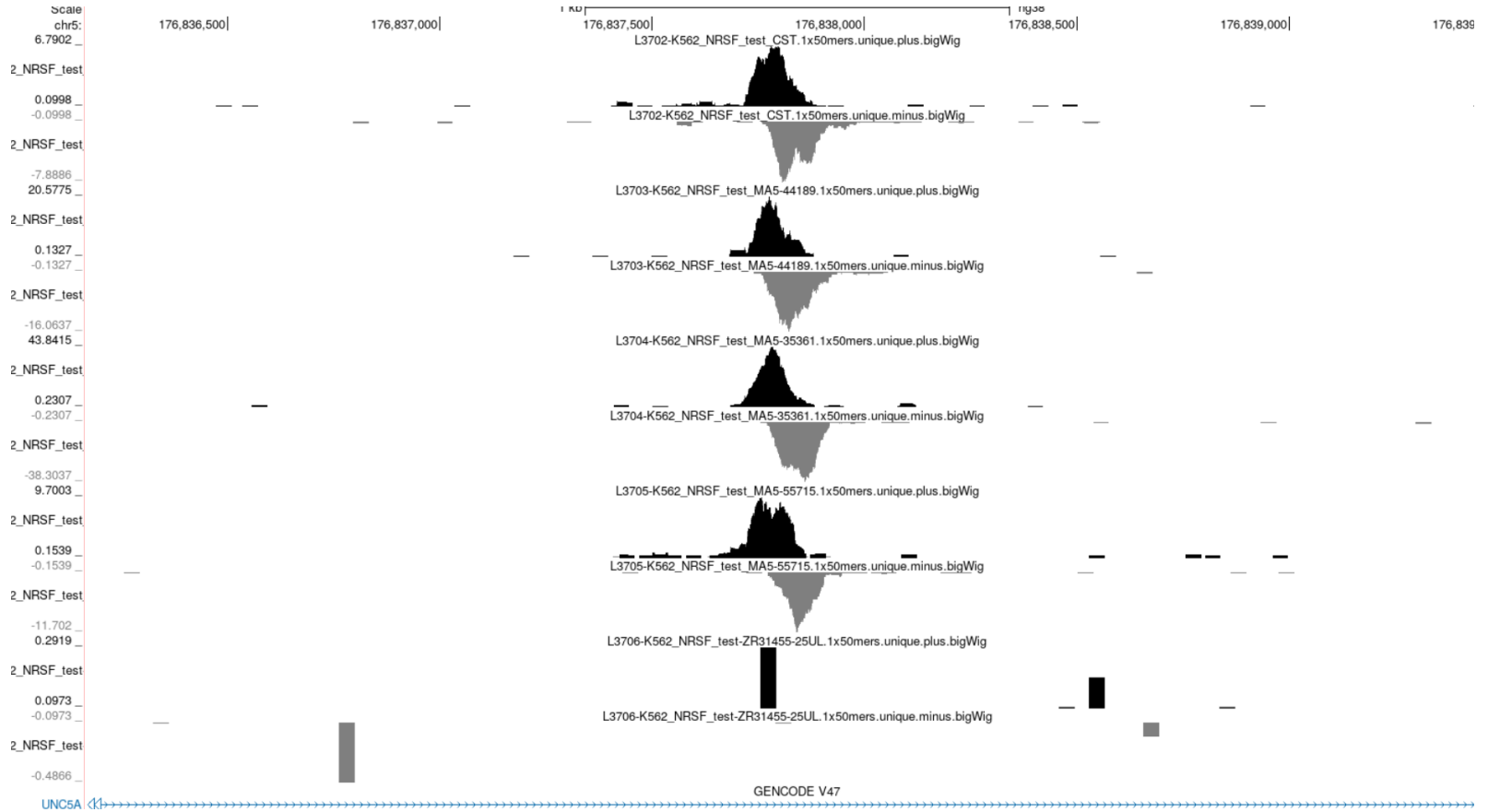
#DataSet:

		K562-NRSF-ENCFF707MDI	L3702-K562_NRSF_test_CST	L3703-K562_NRSF_test_MA5-44189	L3704-K562_NRSF_test_MA5-35361	L3705-K562_NRSF_test_MA5-55715	L3706-K562_NRSF_test-ZR31455-25UL
Regions		21,046	8,069	4,771	2,551	2,074	24
K562-NRSF-ENCFF707MDI	21,046	1.00	0.19	0.08	0.08	0.06	0.00
L3702-K562_NRSF_test_CST	8,069	0.50	1.00	0.15	0.13	0.15	0.00
L3703-K562_NRSF_test_MA5-44189	4,771	0.34	0.25	1.00	0.24	0.20	0.00
L3704-K562_NRSF_test_MA5-35361	2,551	0.63	0.40	0.45	1.00	0.40	0.00
L3705-K562_NRSF_test_MA5-55715	2,074	0.61	0.57	0.46	0.49	1.00	0.00
L3706-K562_NRSF_test-ZR31455-25UL	24	0.50	0.75	0.17	0.17	0.17	1.00

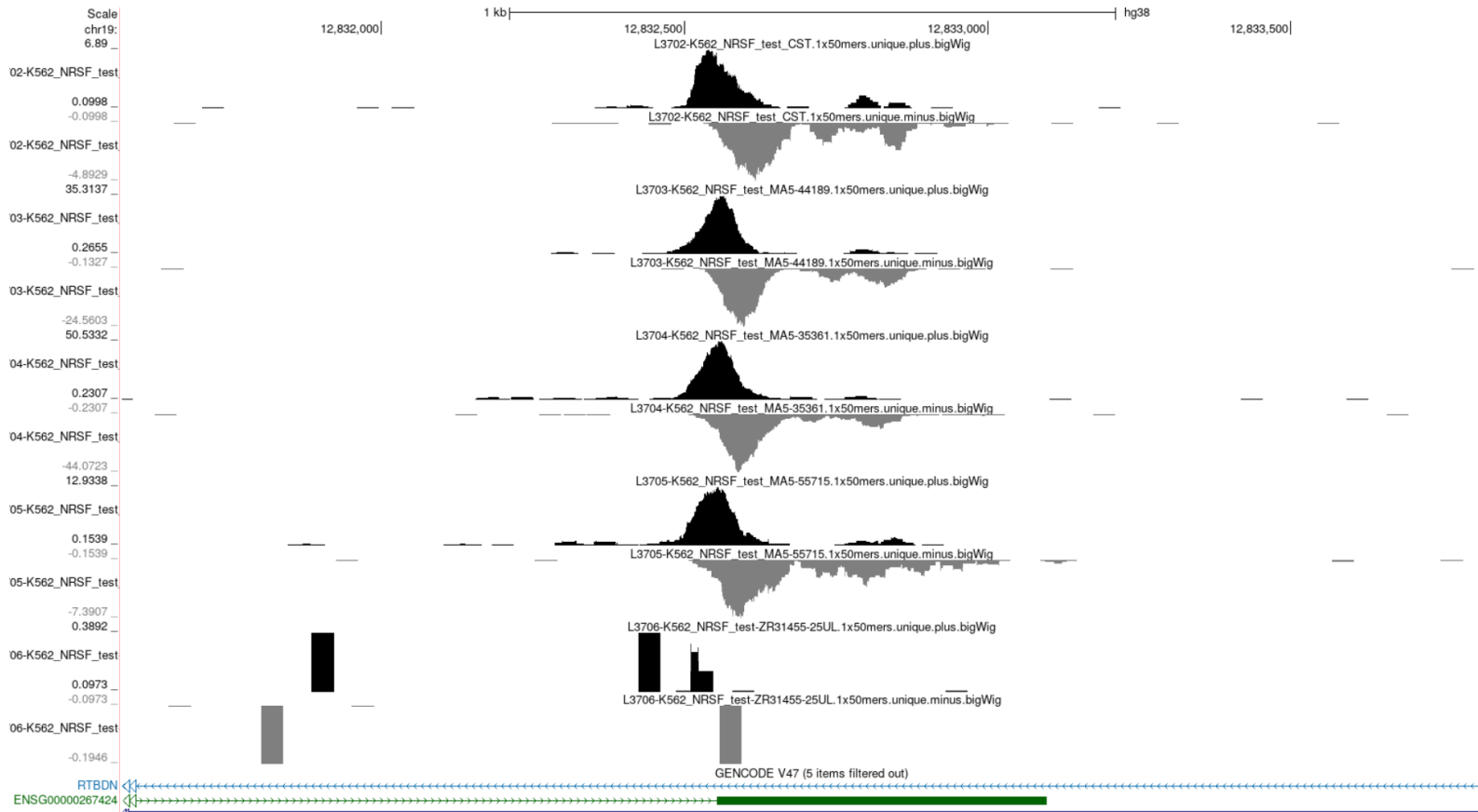
Snapshots



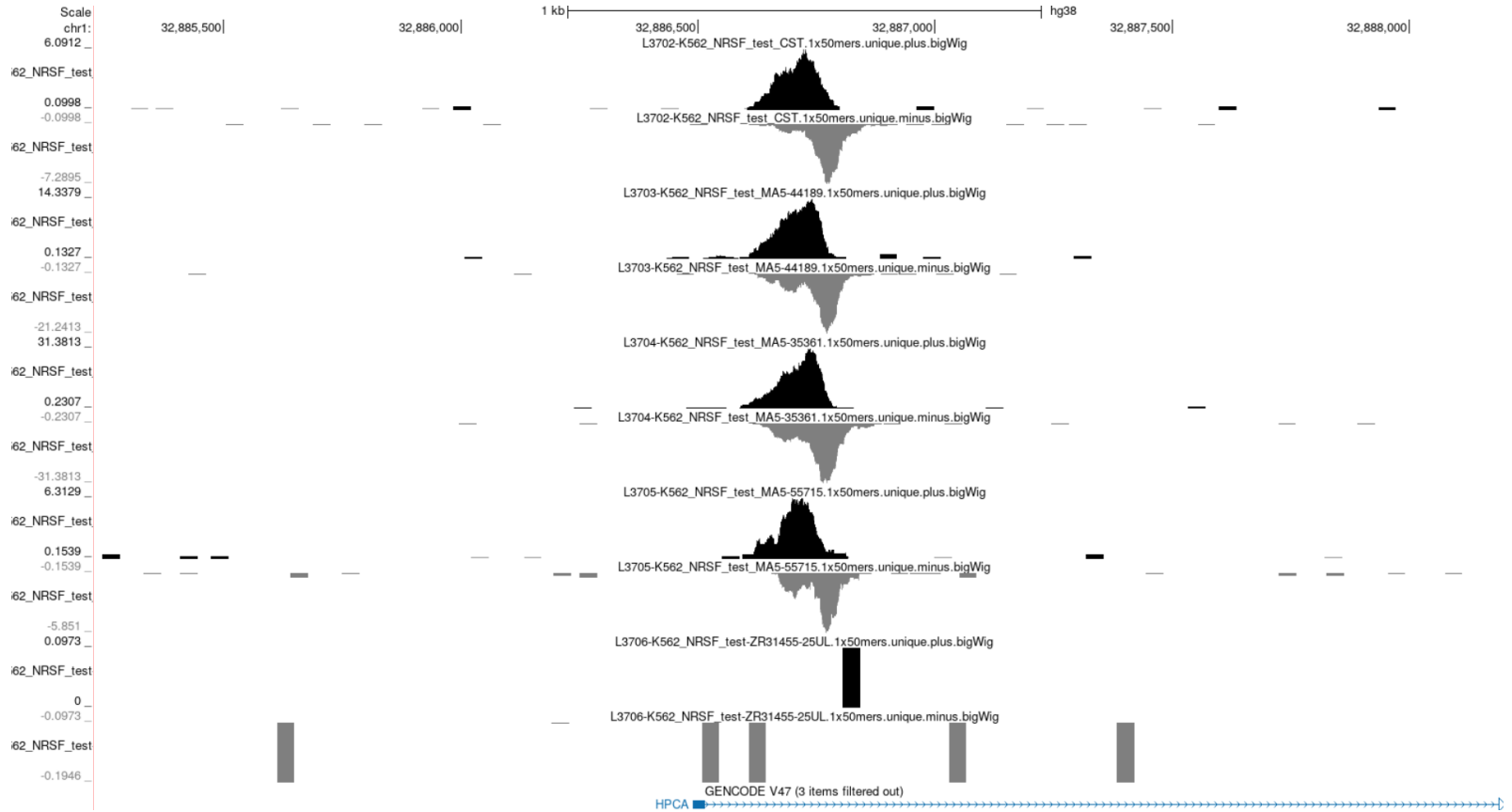
Snapshots



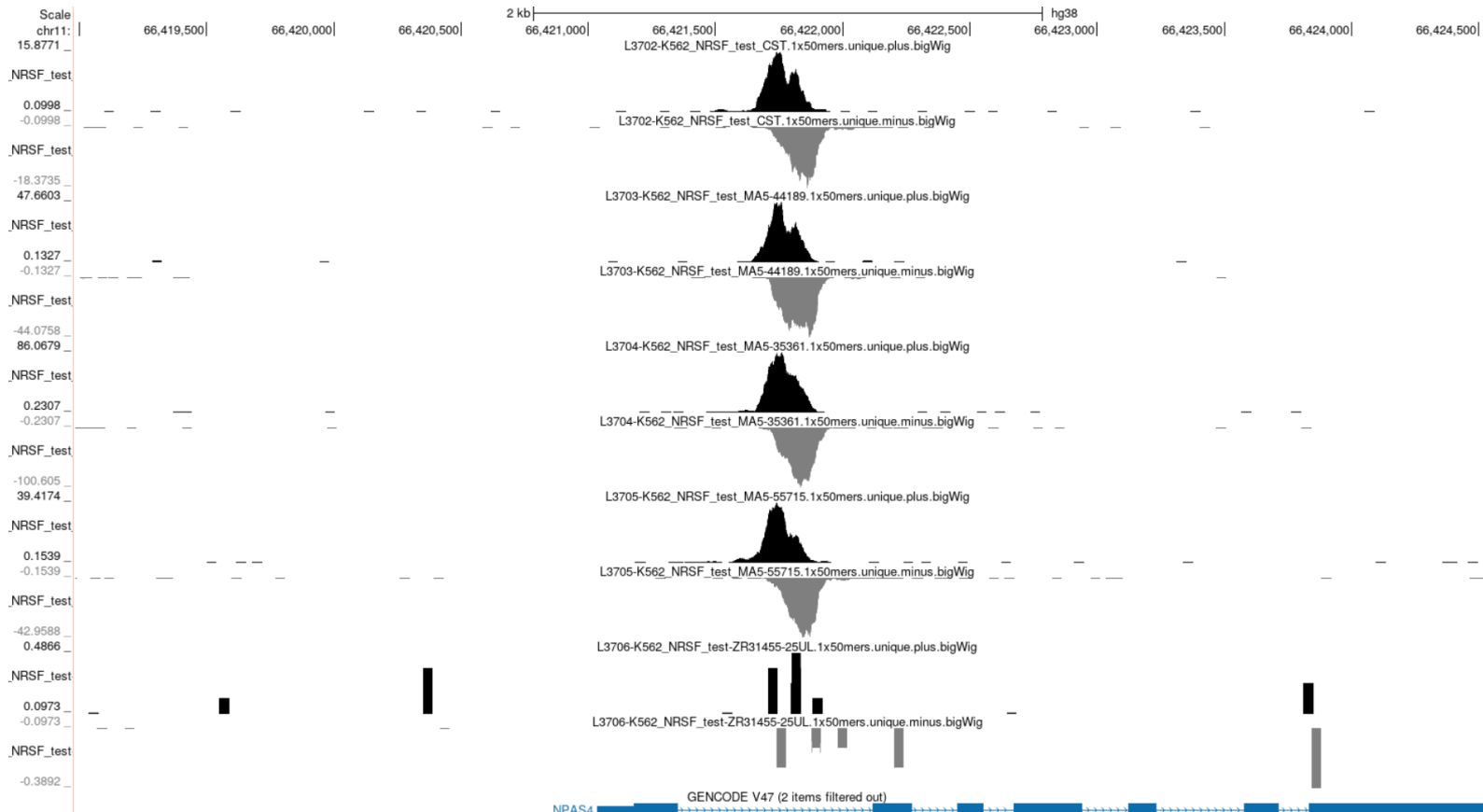
Snapshots



Snapshots



Snapshots



This is very weird – not all antibodies recognize the same sites!

