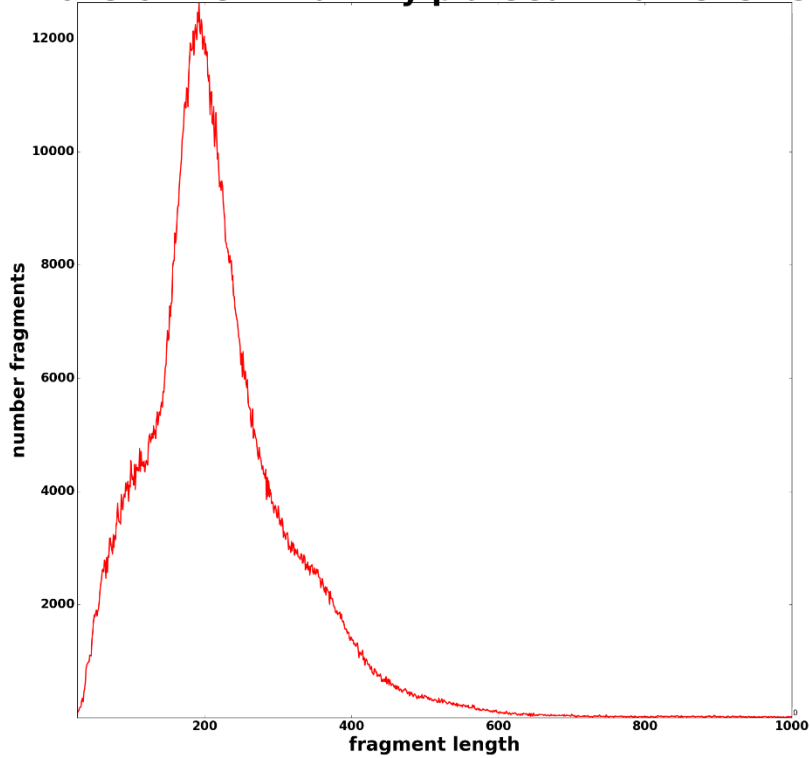


# Dataset stats

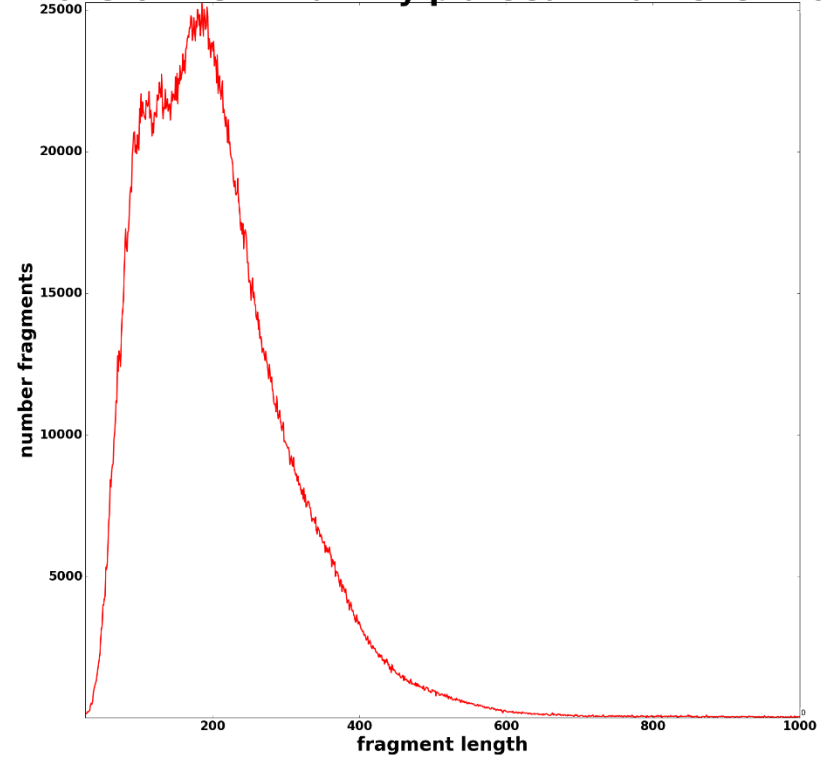
Species	#	Complexity	MACS2 NumPeaks	MACS2 RPM	MACS2 noBL NumPeaks	MACS2 noBL RPM	Read Length	Unique	Raw fragments	Alignment fraction
Homo sapiens hg19	2018-07-18_Arwa_Amy_plateCutNRun-CTCF-10K	0.34	220	20,115	34	121	2x25	10,974,050	15,758,491	0.35
Homo sapiens hg19	2018-07-18_Arwa_Amy_plateCutNRun-CTCF-250K	0.86	70,775	274,971	69,992	265,441	2x25	33,389,914	20,146,904	0.83
Homo sapiens hg19	2018-07-18_Arwa_Amy_plateCutNRun-CTCF-250K-1-100Ab	0.81	87,533	284,992	86,591	274,181	2x25	48,843,364	31,335,769	0.78
Homo sapiens hg19	2018-07-18_Arwa_Amy_plateCutNRun-CTCF-250K-1-200	0.82	93,429	282,021	92,384	270,368	2x25	54,855,140	34,308,124	0.80
Homo sapiens hg19	2018-07-18_Arwa_Amy_plateCutNRun-CTCF-250K-1-20Ab	0.86	91,296	197,887	90,029	182,649	2x25	55,436,970	35,062,744	0.79
Homo sapiens hg19	2018-07-18_Arwa_Amy_plateCutNRun-CTCF-250K-15-min	0.82	55,685	242,720	54,813	229,893	2x25	39,687,194	25,831,109	0.77
Homo sapiens hg19	2018-07-18_Arwa_Amy_plateCutNRun-CTCF-250K-30min	0.84	108,938	236,118	107,683	222,076	2x25	68,747,676	42,979,413	0.80
Homo sapiens hg19	2018-07-18_Arwa_Amy_plateCutNRun-CTCF-250K-5-min	0.83	63,534	218,351	62,470	203,794	2x25	45,899,430	28,855,257	0.80
Homo sapiens hg19	2018-07-18_Arwa_Amy_plateCutNRun-CTCF-50K	0.64	5,606	31,364	5,095	12,385	2x25	20,730,152	15,345,552	0.68
Homo sapiens hg19	2018-07-18_Arwa_Amy_plateCutNRun-CTCF-5K	0.46	84	13,598	8	90	2x25	3,979,010	13,044,860	0.15
Homo sapiens hg19	2018-07-18_Arwa_Amy_plateCutNRun-H3K27ac-10K	0.58	548	14,182	163	381	2x25	20,396,336	14,213,277	0.72
Homo sapiens hg19	2018-07-18_Arwa_Amy_plateCutNRun-H3K27ac-250K	0.91	185,764	190,909	184,866	187,246	2x25	75,082,818	43,212,742	0.87
Homo sapiens hg19	2018-07-18_Arwa_Amy_plateCutNRun-H3K27ac-50K	0.71	21,757	41,027	20,911	30,189	2x25	47,075,886	29,394,287	0.80
Homo sapiens hg19	2018-07-18_Arwa_Amy_plateCutNRun-H3K27ac-5K	0.36	50	11,121	4	130	2x25	3,035,980	9,825,263	0.15
Homo sapiens hg19	2018-07-18_Arwa_Amy_plateCutNRun-H3K4me1-10K	0.61	2,449	12,709	2,163	5,338	2x25	18,424,178	12,801,327	0.72
Homo sapiens hg19	2018-07-18_Arwa_Amy_plateCutNRun-H3K4me1-250K	0.84	186,694	423,586	186,226	421,638	2x25	96,518,030	55,361,086	0.87
Homo sapiens hg19	2018-07-18_Arwa_Amy_plateCutNRun-H3K4me1-50K	0.82	79,653	180,643	79,230	177,786	2x25	44,761,726	26,503,774	0.84
Homo sapiens hg19	2018-07-18_Arwa_Amy_plateCutNRun-H3K4me1-5K	0.68	129	12,467	15	214	2x25	4,723,230	6,665,653	0.35

# Fragment length distribution:

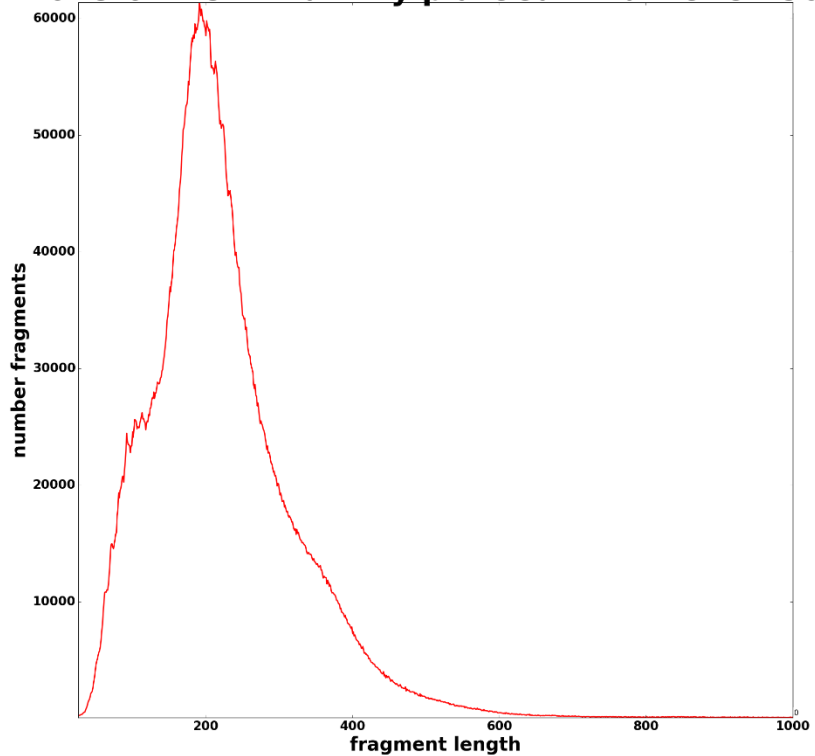
2018-07-18 Arwa Amy plateCutNRun-CTCF-5K



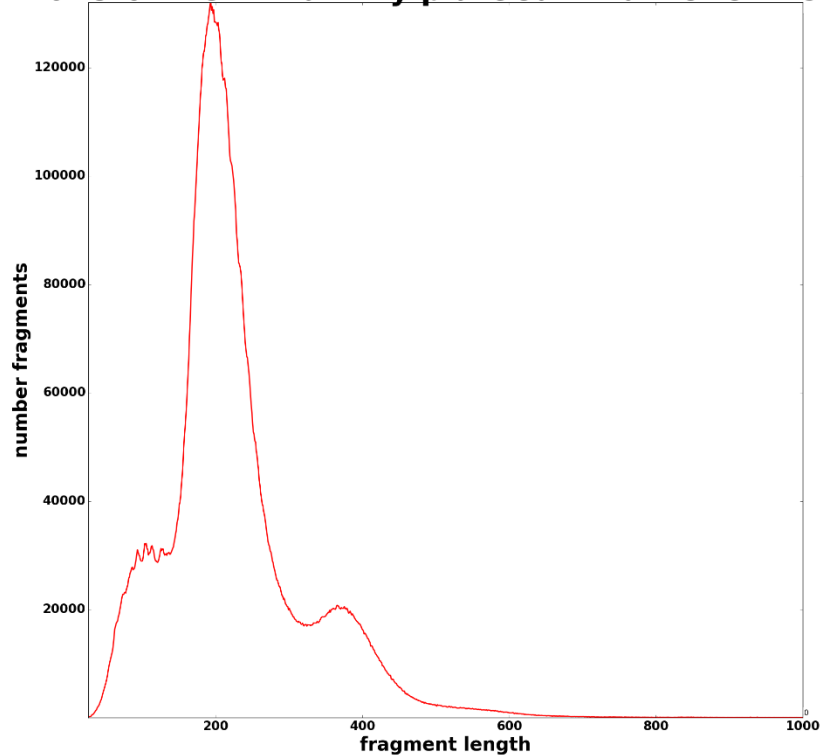
2018-07-18 Arwa Amy plateCutNRun-CTCF-10K



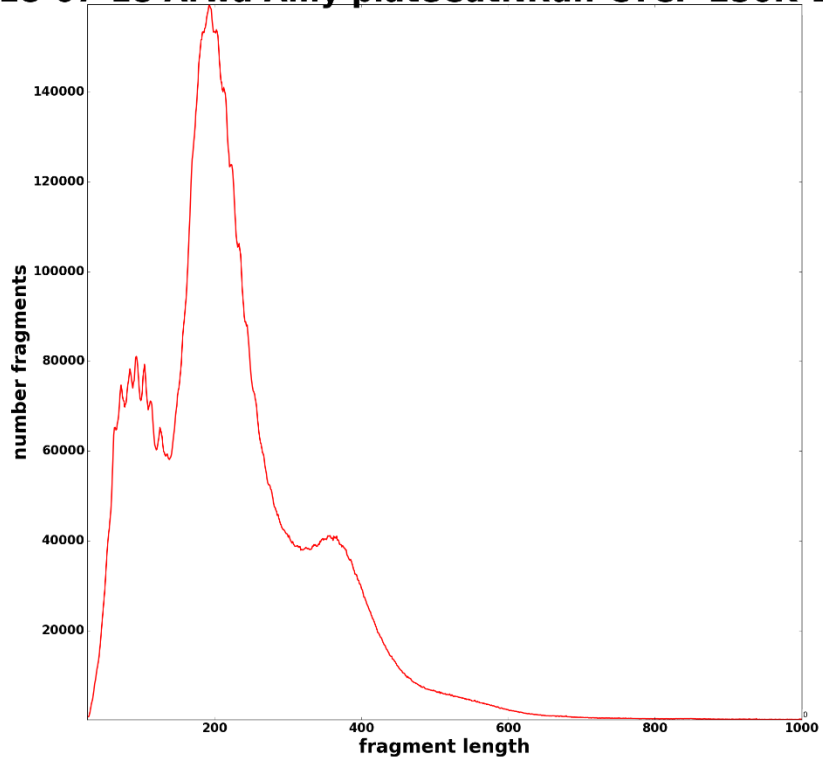
**2018-07-18 Arwa Amy plateCutNRun-CTCF-50K**



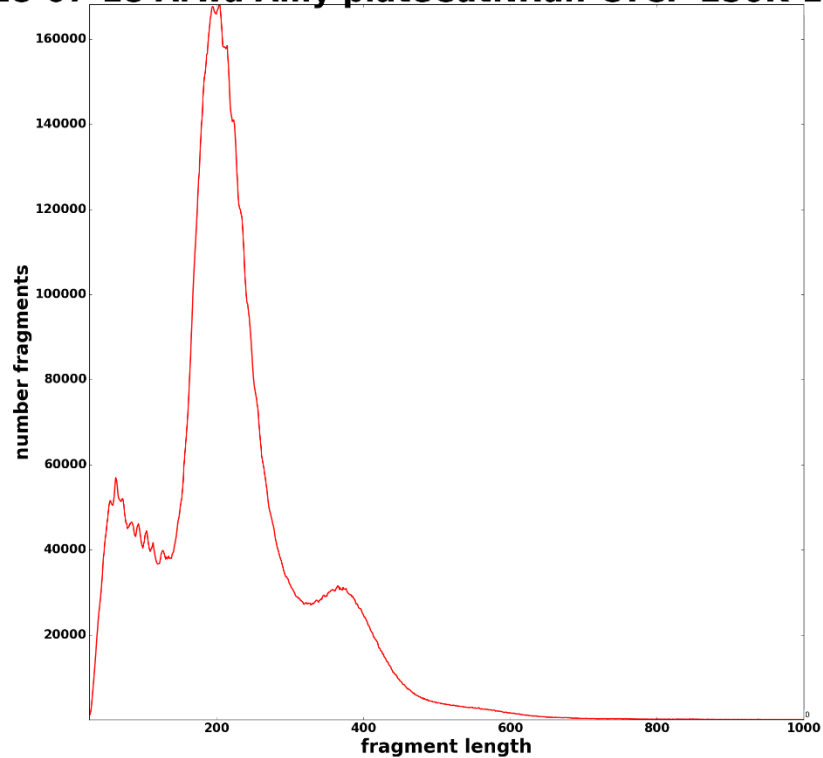
**2018-07-18 Arwa Amy plateCutNRun-CTCF-250K**



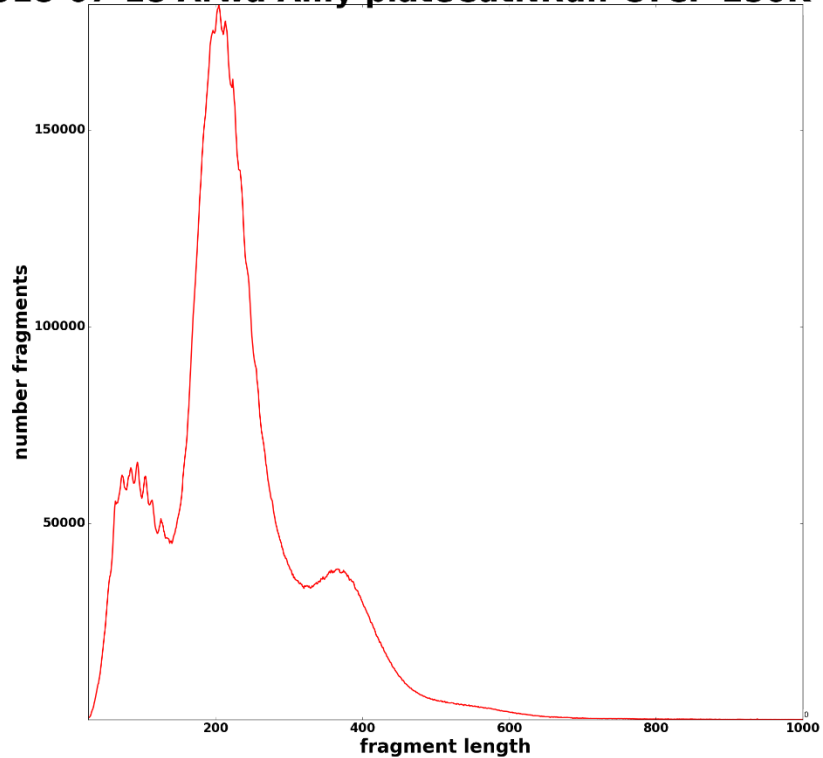
18-07-18 Arwa Amy plateCutNRun-CTCF-250K-1-20



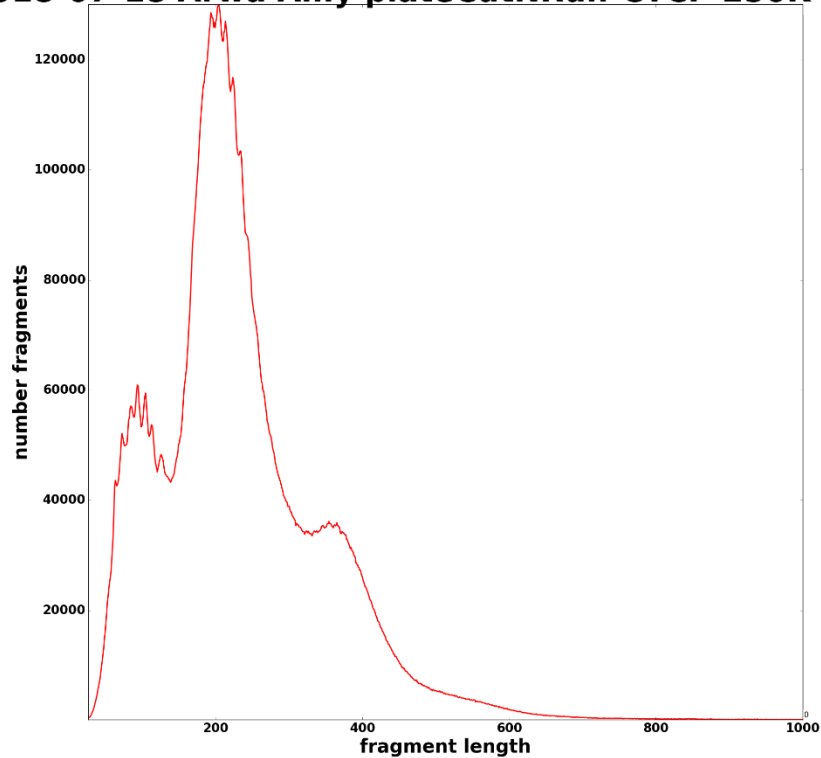
18-07-18 Arwa Amy plateCutNRun-CTCF-250K-1-100



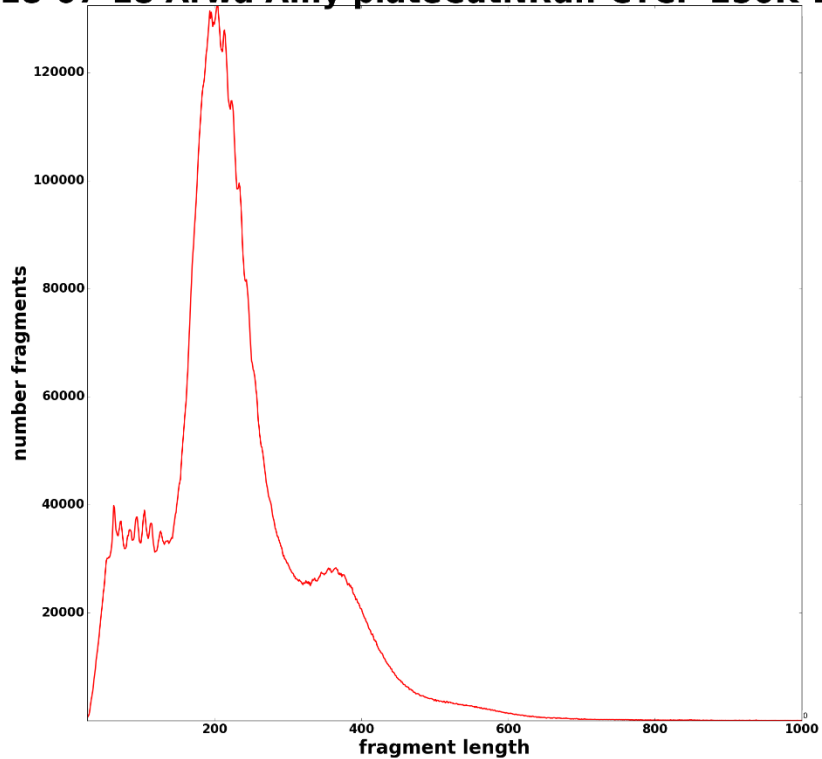
18-07-18 Arwa Amy plateCutNRun-CTCF-250K-1-20



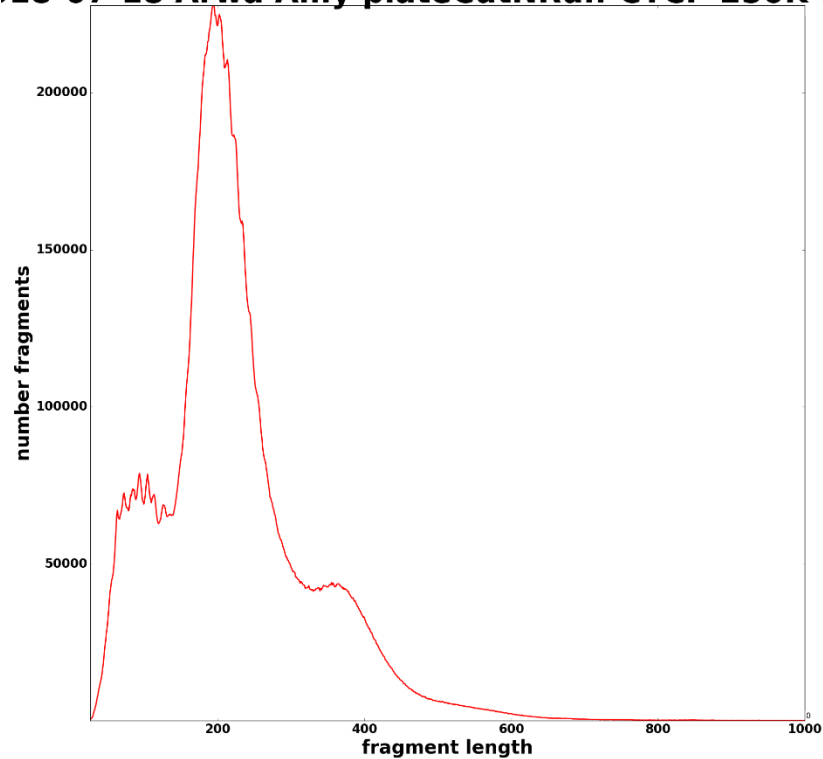
18-07-18 Arwa Amy plateCutNRun-CTCF-250K-5-m



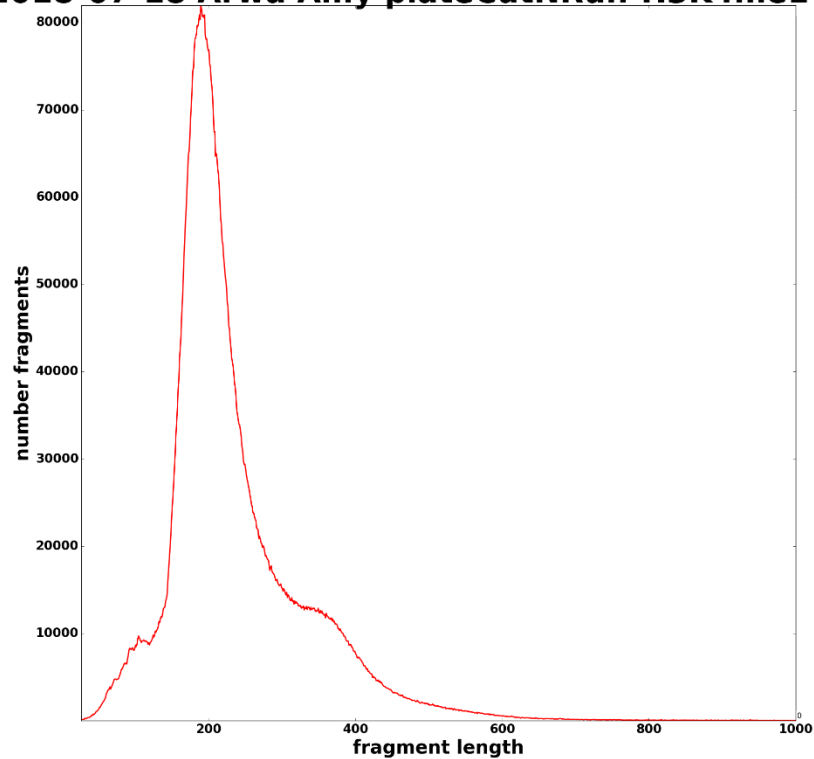
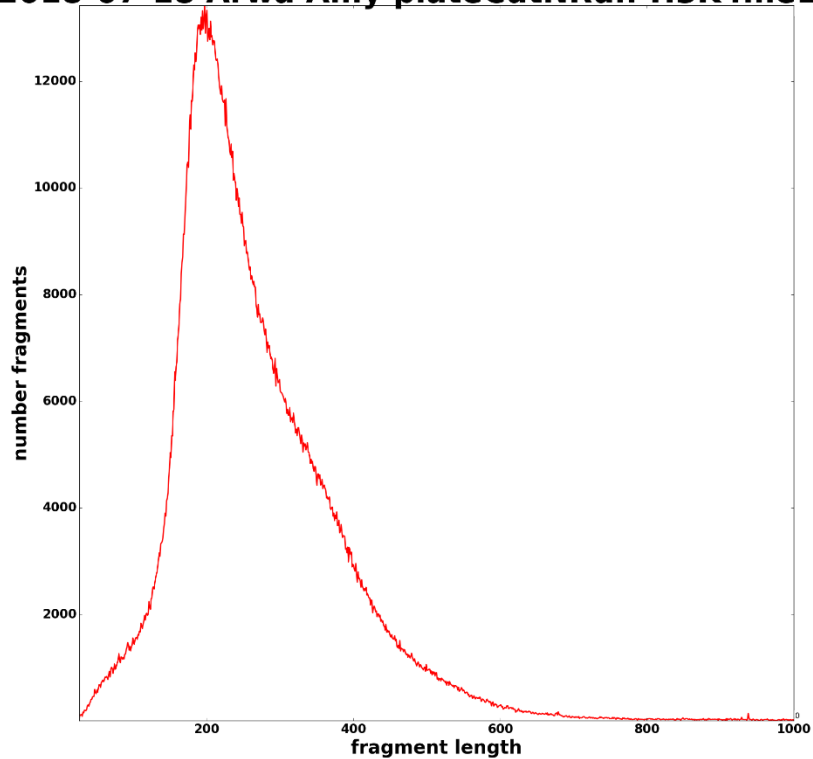
18-07-18 Arwa Amy plateCutNRrun-CTCF-250K-15-r



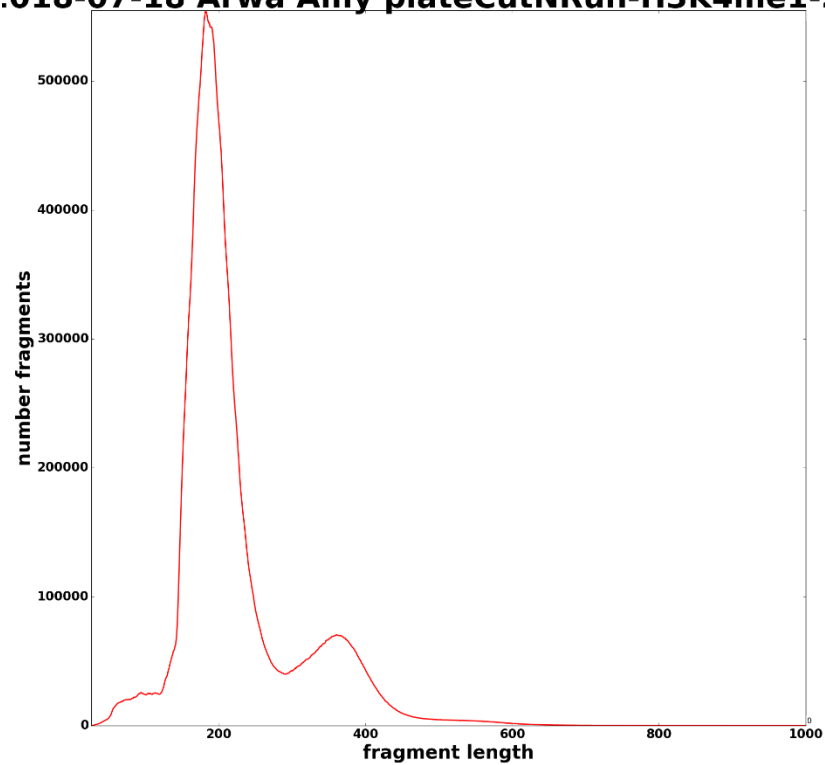
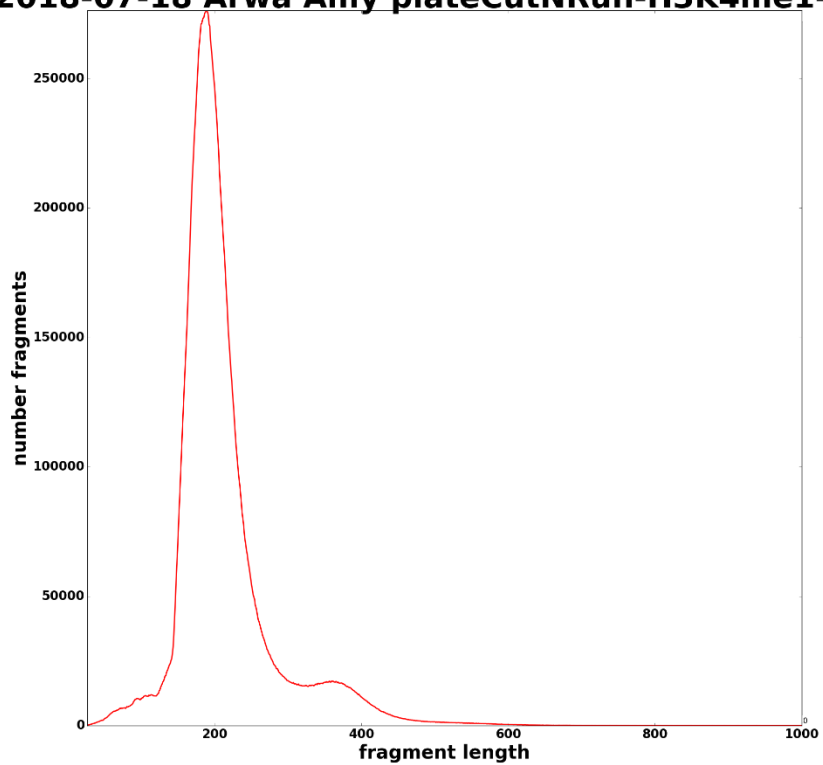
18-07-18 Arwa Amy plateCutNRrun-CTCF-250K-30m



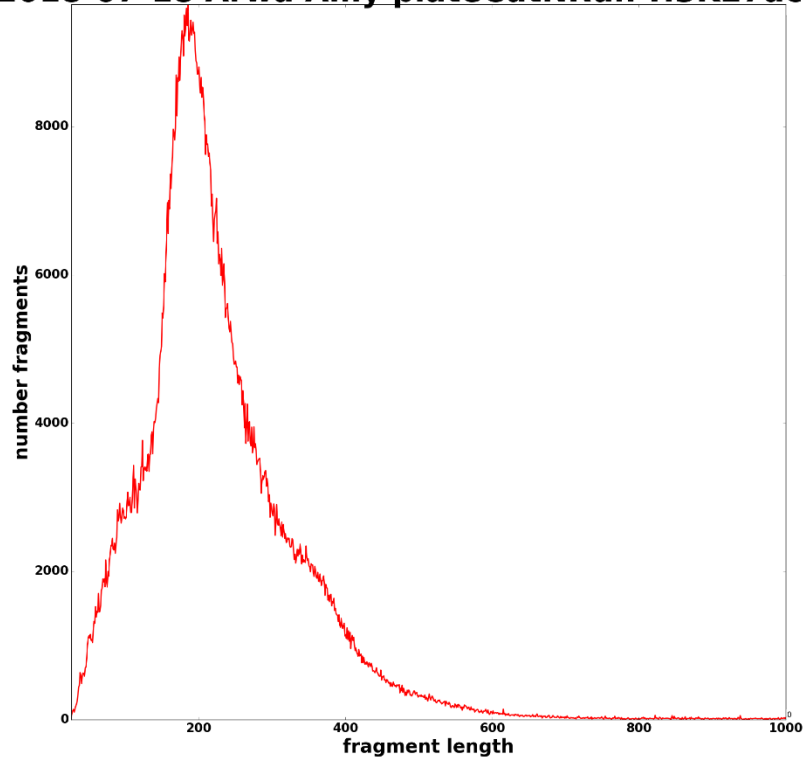
2018-07-18 Arwa Amy plateCutNRun-H3K4me1-5K 2018-07-18 Arwa Amy plateCutNRun-H3K4me1-10K



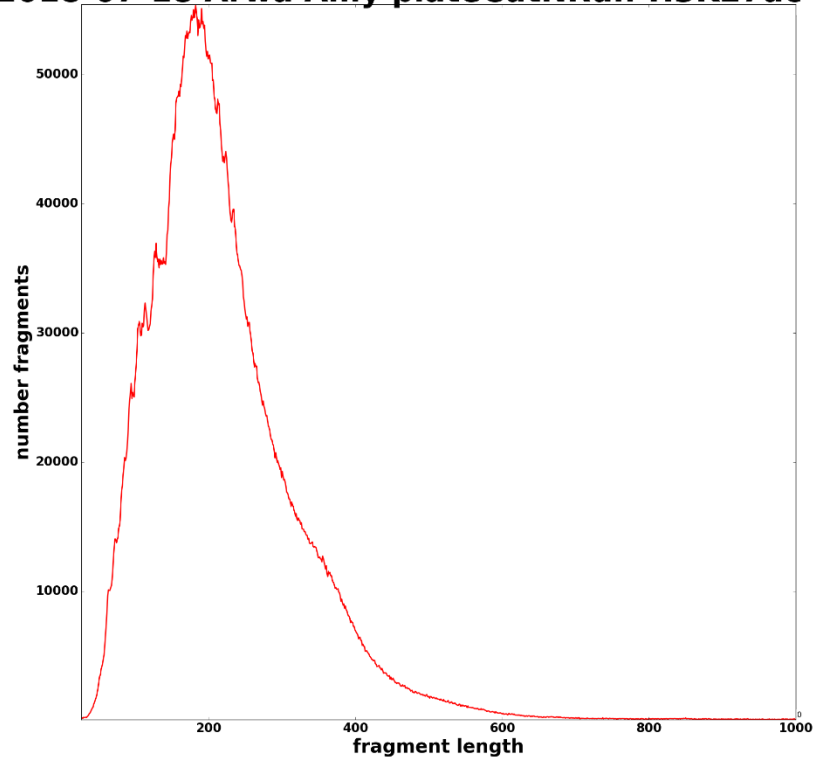
2018-07-18 Arwa Amy plateCutNRun-H3K4me1-50K :018-07-18 Arwa Amy plateCutNRun-H3K4me1-250I



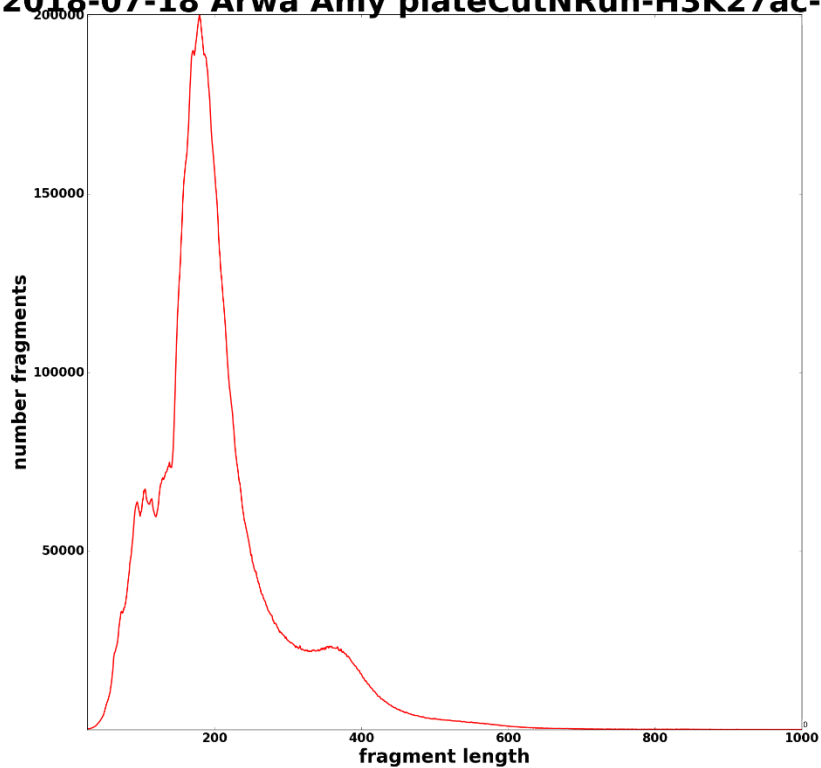
2018-07-18 Arwa Amy plateCutNRun-H3K27ac-5K



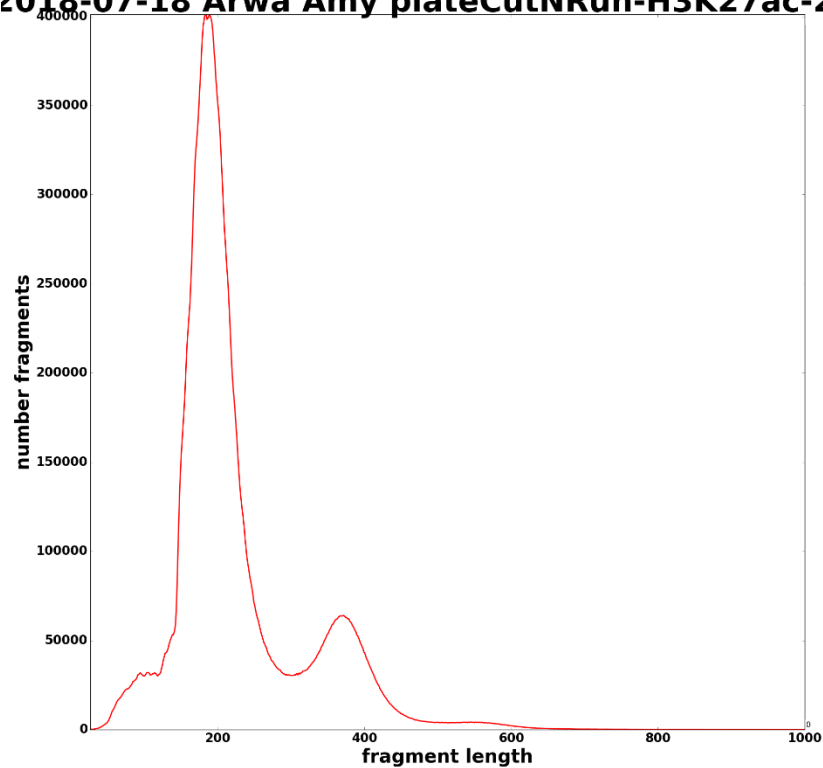
2018-07-18 Arwa Amy plateCutNRun-H3K27ac-10K



2018-07-18 Arwa Amy plateCutNRun-H3K27ac-50K



2018-07-18 Arwa Amy plateCutNRun-H3K27ac-250K



## Overlap with ChIP-seq peaks and CTCF motifs:

number peaks

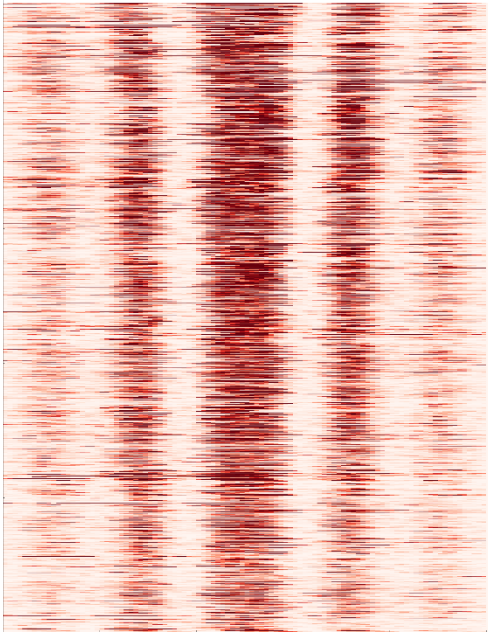
	ChIP peak		no ChIP peak	
	motif	no motif	motif	no motif
<b>10K</b>	2	5	0	26
<b>250K-1-100Ab</b>	14,160	5,801	13,804	52,825
<b>250K-1-200</b>	13,587	6,016	14,331	58,449
<b>250K-1-20Ab</b>	8,943	5,817	10,847	64,421
<b>250K-15-min</b>	14,362	4,838	10,194	25,418
<b>250K-30min</b>	10,642	7,141	13,480	76,419
<b>250K-5-min</b>	11,597	5,329	10,352	35,191
<b>250K</b>	9,951	5,521	11,511	43,008
<b>50K</b>	2,035	988	960	1,111

fraction

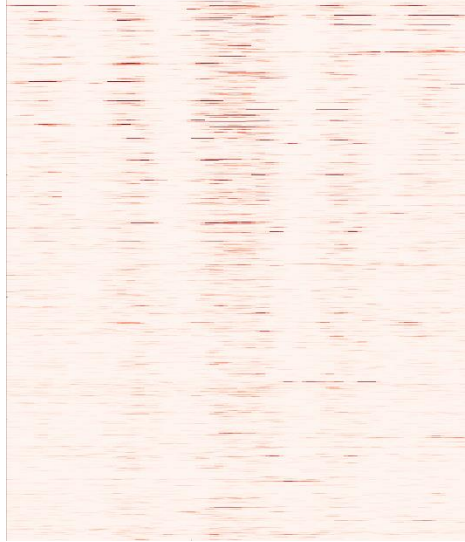
	ChIP peak		no ChIP peak	
	motif	no motif	motif	no motif
<b>10K</b>	0.29	0.71	0.00	1.00
<b>250K-1-100Ab</b>	0.71	0.29	0.21	0.79
<b>250K-1-200</b>	0.69	0.31	0.20	0.80
<b>250K-1-20Ab</b>	0.61	0.39	0.14	0.86
<b>250K-15-min</b>	0.75	0.25	0.29	0.71
<b>250K-30min</b>	0.60	0.40	0.15	0.85
<b>250K-5-min</b>	0.69	0.31	0.23	0.77
<b>250K</b>	0.64	0.36	0.21	0.79
<b>50K</b>	0.67	0.33	0.46	0.54

## Overlap with ChIP-seq peaks, profile around peaks

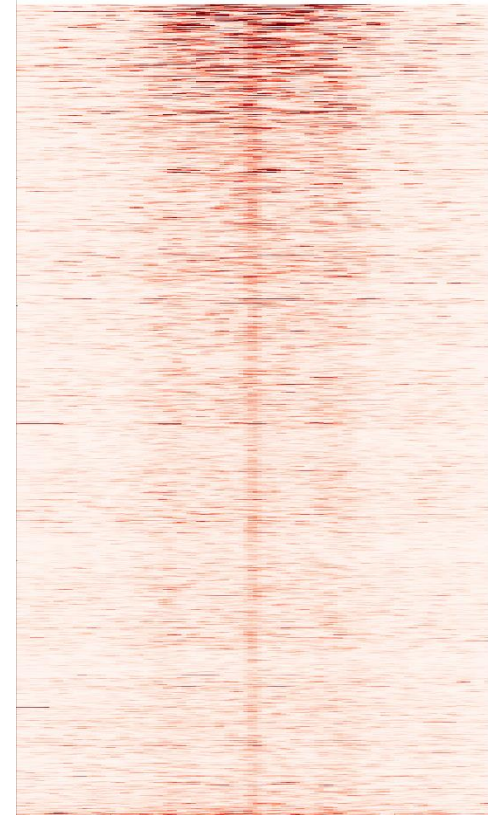
common sites



ChIP-only sites



CUT&RUN only sites

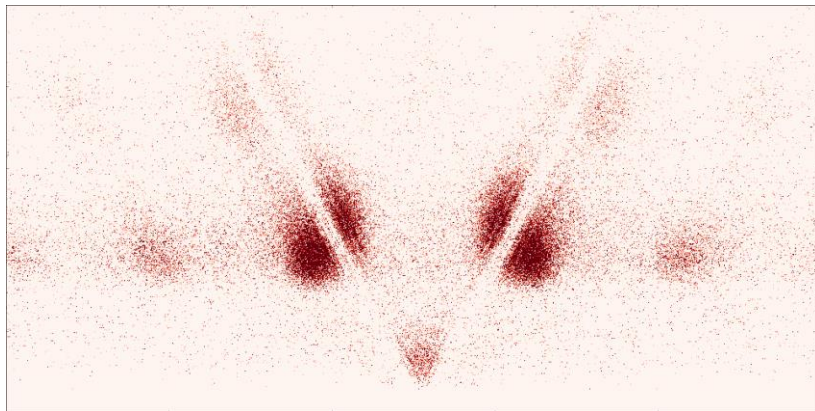


# CTCF-50K

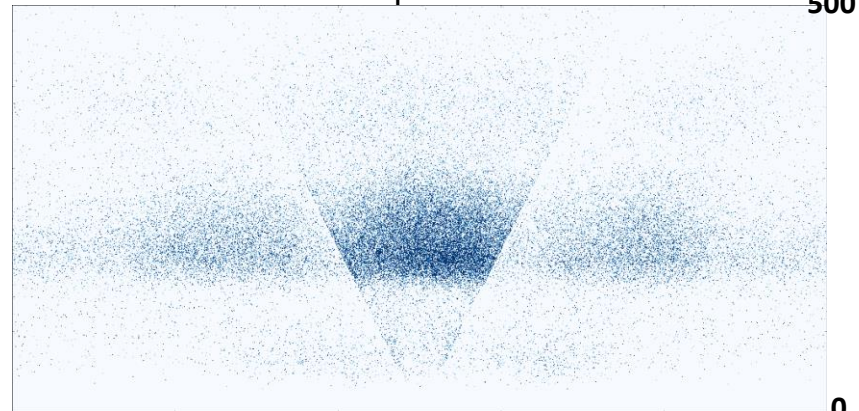
motif-centered

MACS2 peak call-centered

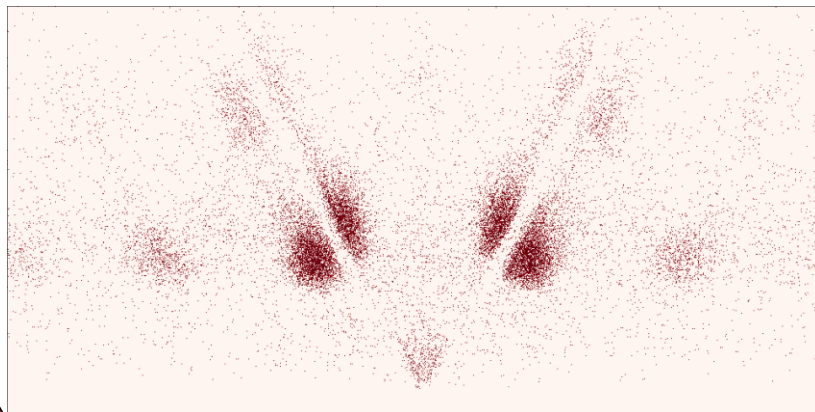
ChIP-common sites  
with motif



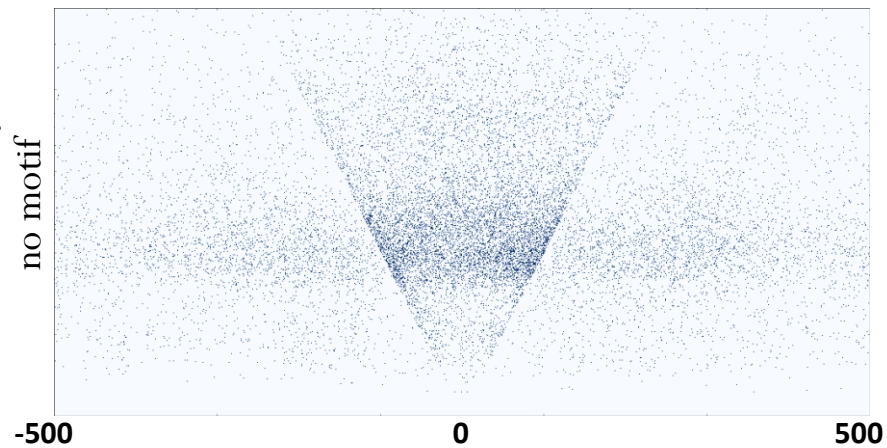
ChIP-common sites  
with motif



CUTnRUN-only sites  
with motif



CUTnRUN-only sites  
no motif

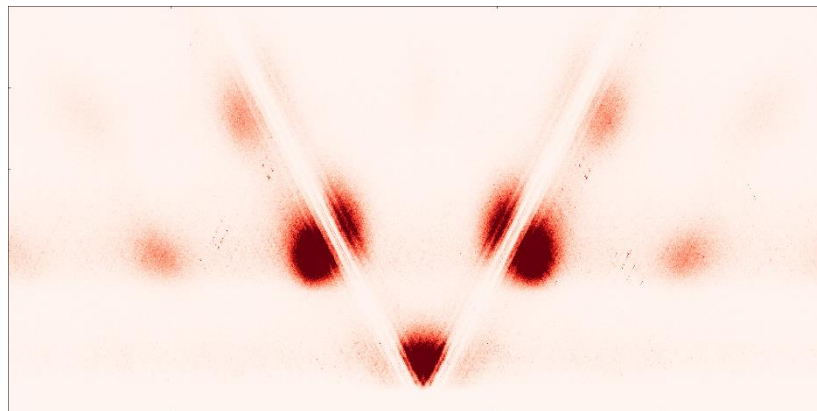


CTCF 250K-1-200

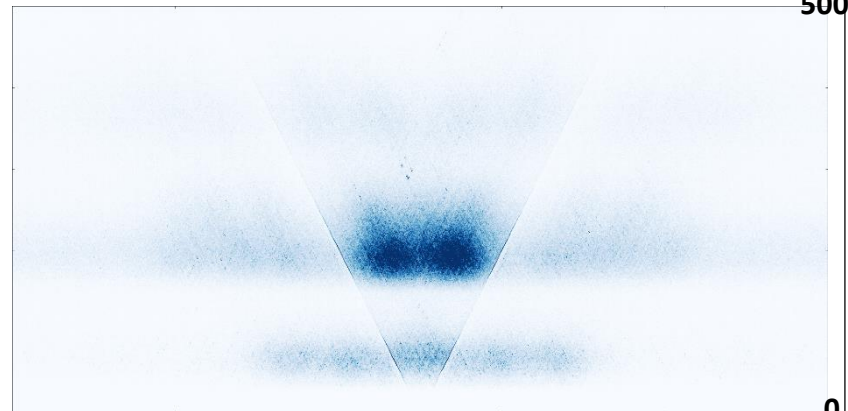
motif-centered

MACS2 peak call-centered

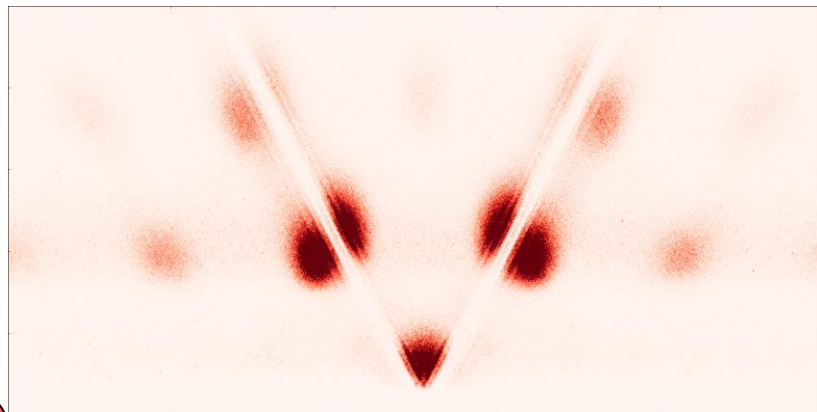
ChIP-common sites  
with motif



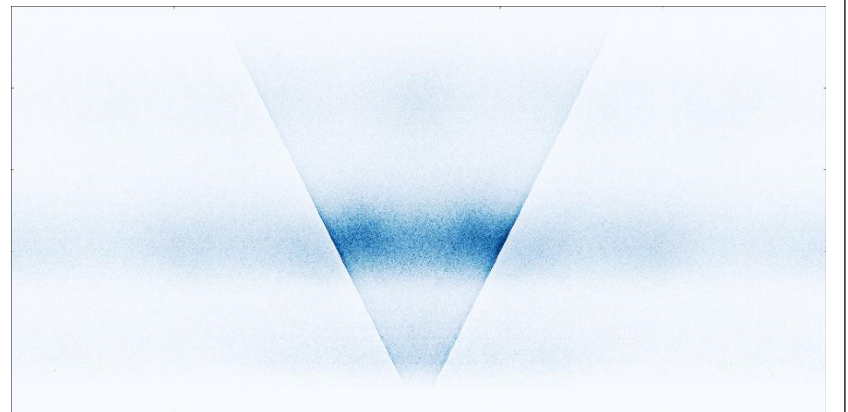
ChIP-common sites  
with motif



CUTnRUN-only sites  
with motif



CUTnRUN-only sites  
no motif

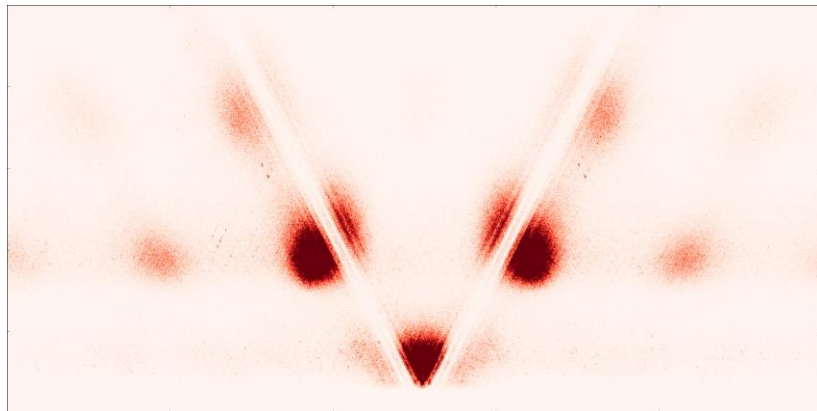


# CTCF-250K-1-20Ab

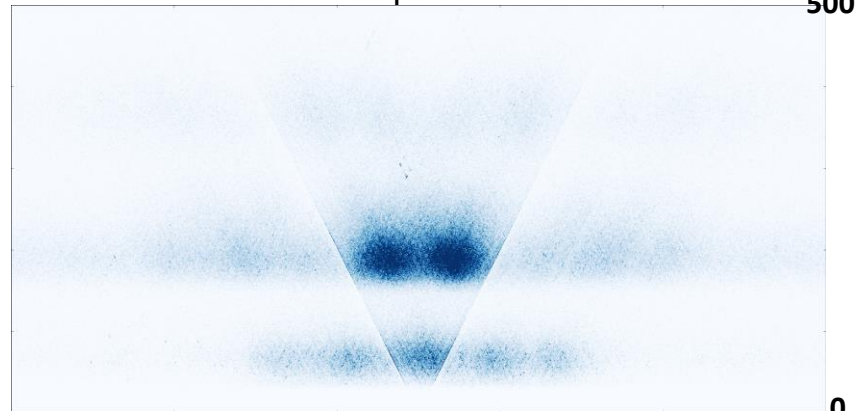
motif-centered

MACS2 peak call-centered

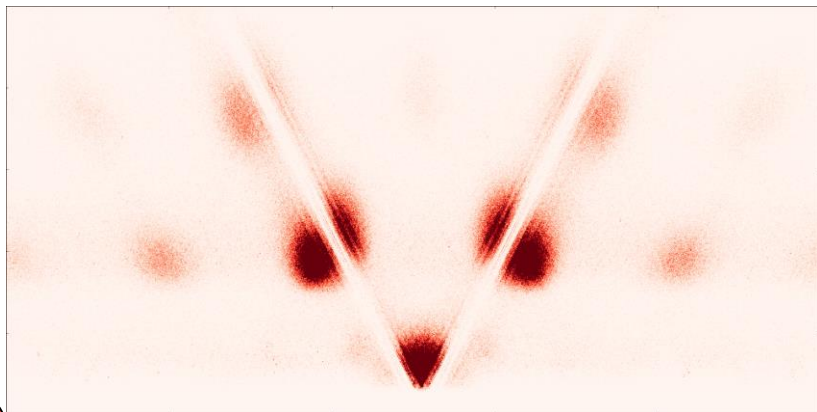
ChIP-common sites  
with motif



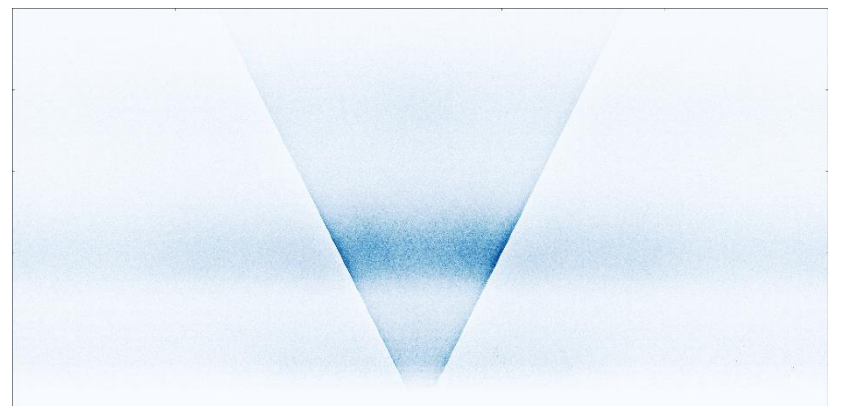
ChIP-common sites  
with motif



CUTnRUN-only sites  
with motif



CUTnRUN-only sites  
no motif



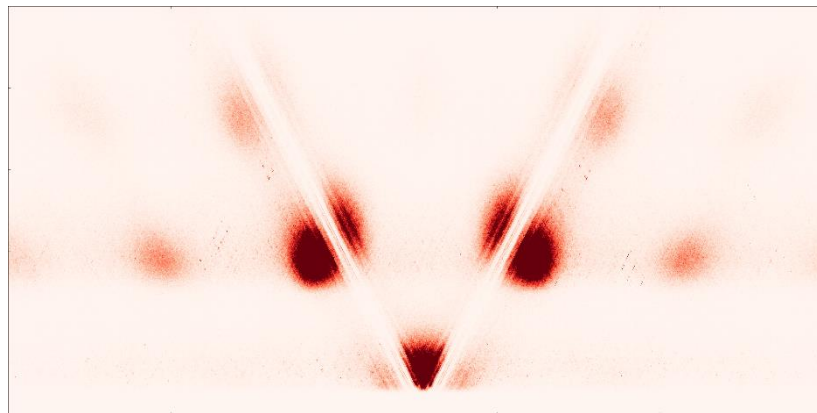
# CTCF-250K-1-100Ab

motif-centered

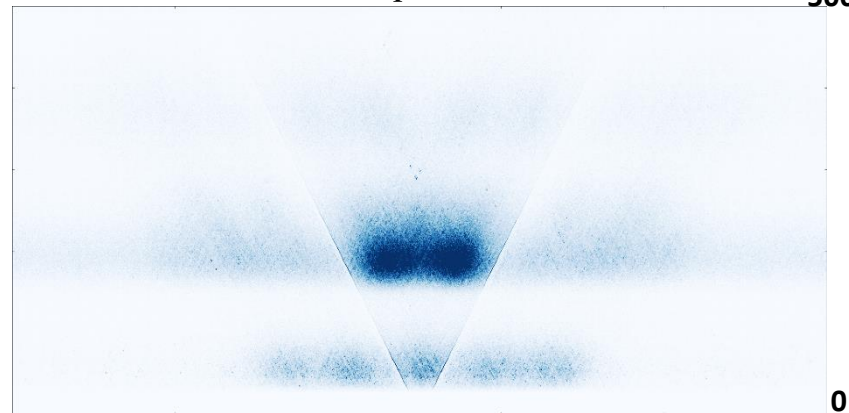
MACS2 peak call-centered

500

ChIP-common sites  
with motif

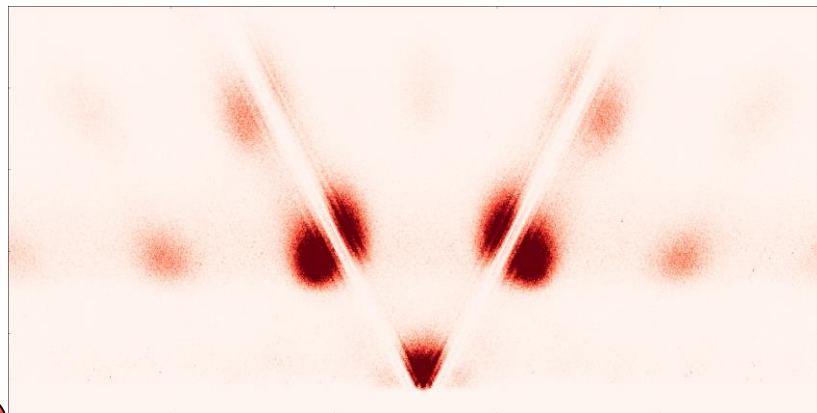


ChIP-common sites  
with motif

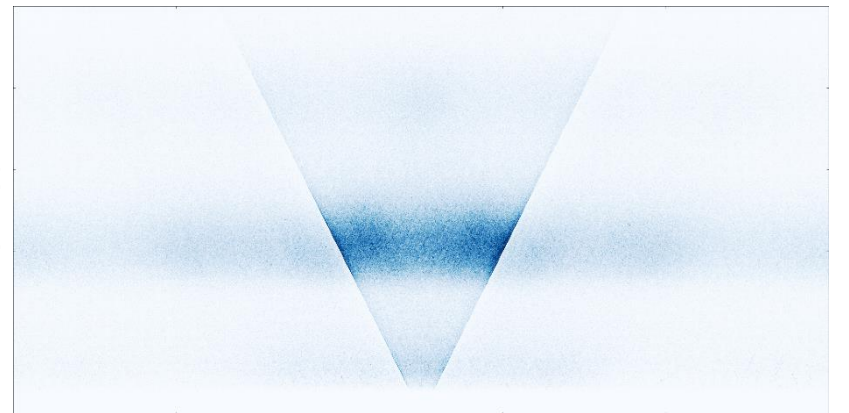


0

CUTnRUN-only sites  
with motif



CUTnRUN-only sites  
no motif



-500

0

500

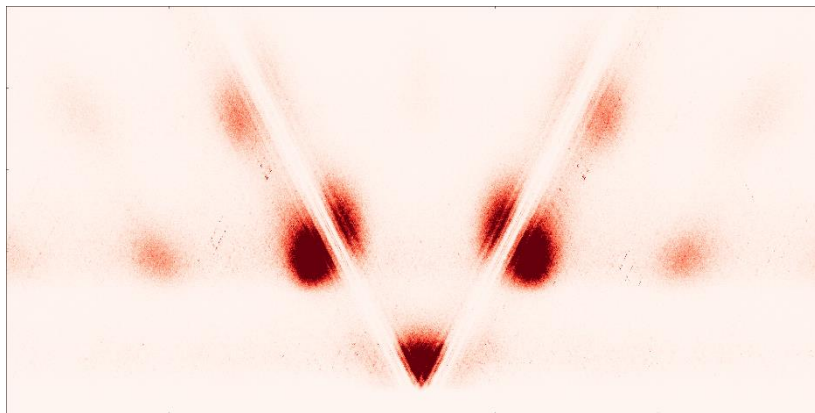
CTCF-250K-5-min

motif-centered

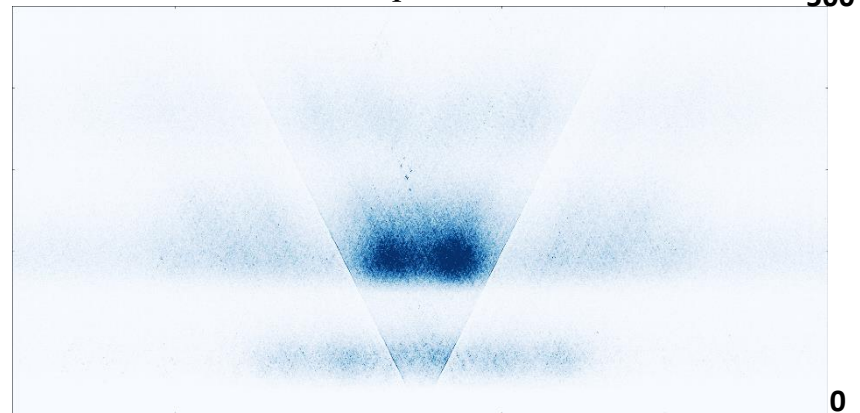
MACS2 peak call-centered

500

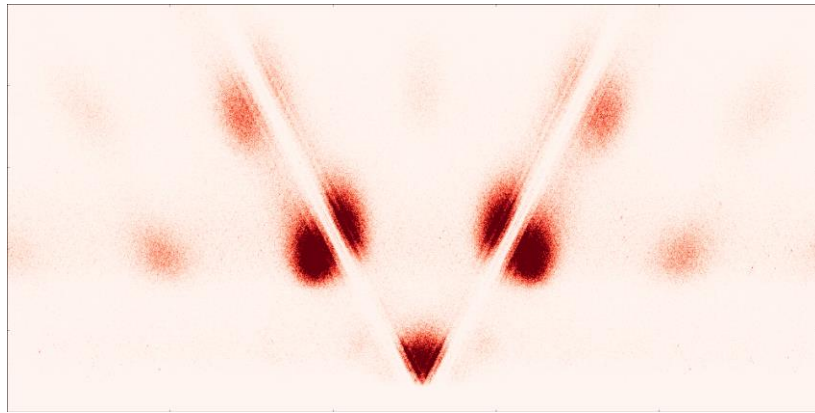
ChIP-common sites  
with motif



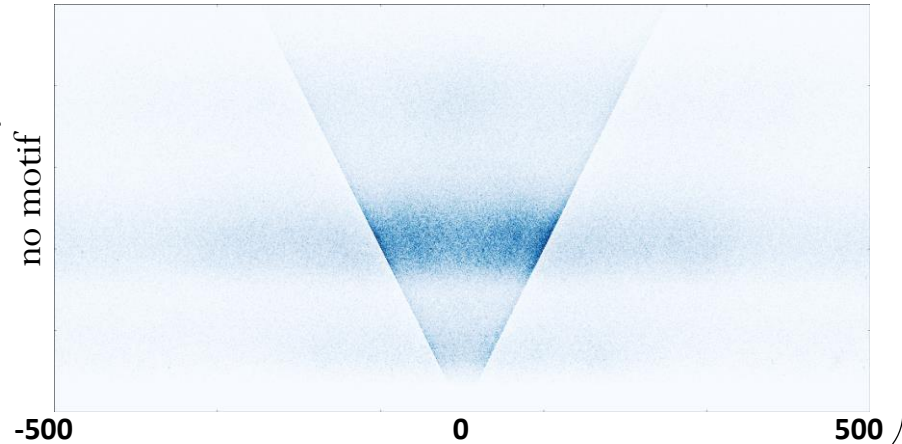
ChIP-common sites  
with motif



CUTnRUN-only sites  
with motif



CUTnRUN-only sites  
no motif

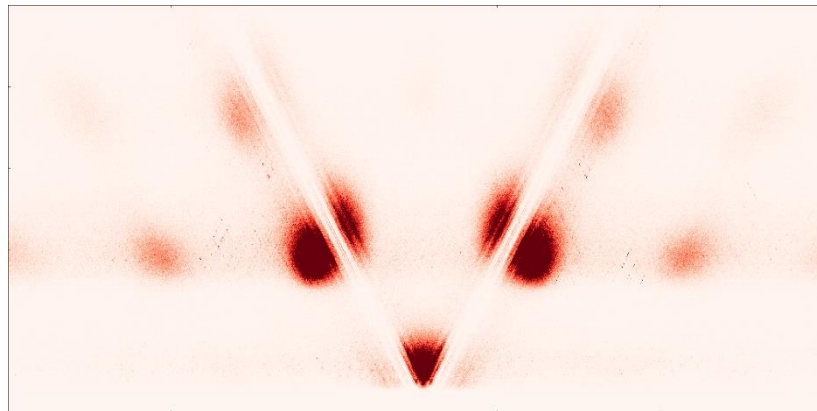


CTCF 250K-15-min

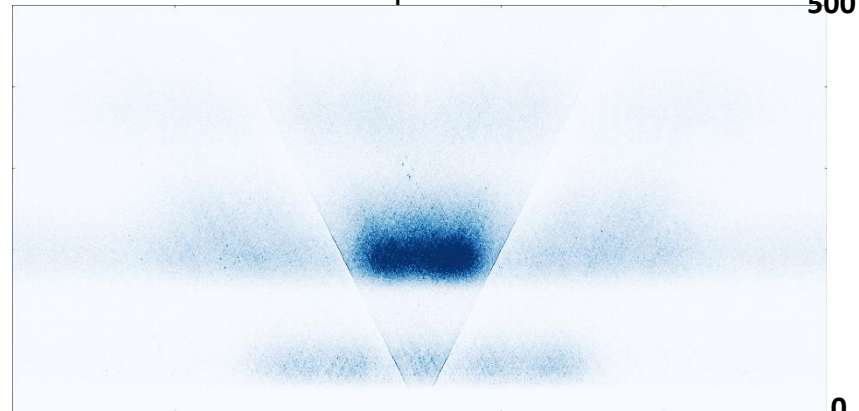
motif-centered

MACS2 peak call-centered

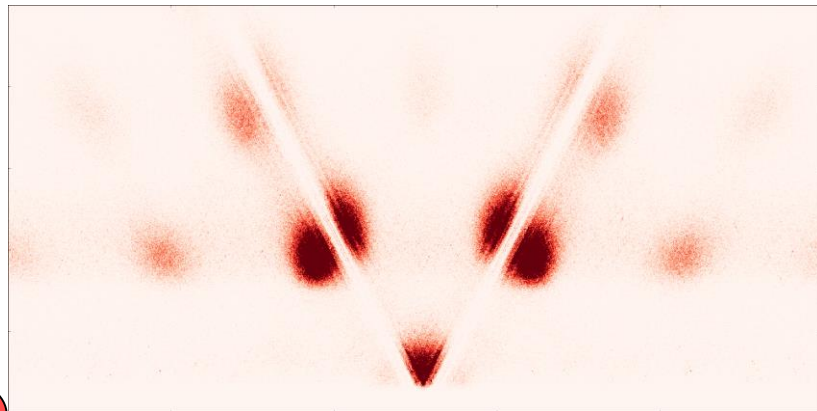
ChIP-common sites  
with motif



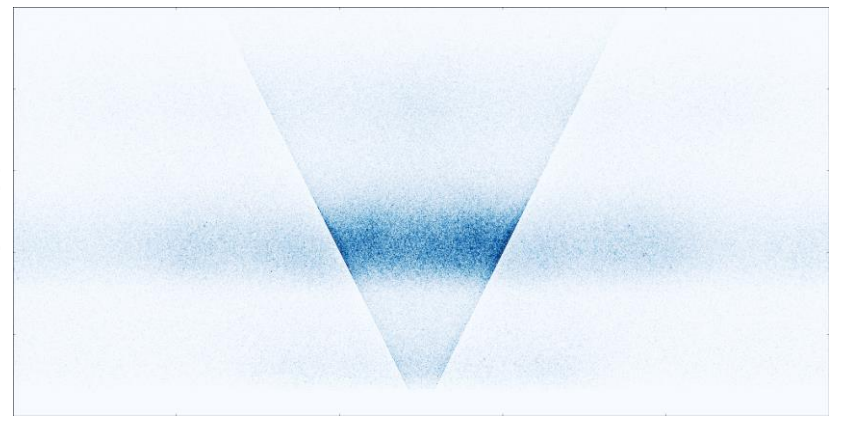
ChIP-common sites  
with motif



CUTnRUN-only sites  
with motif



CUTnRUN-only sites  
no motif

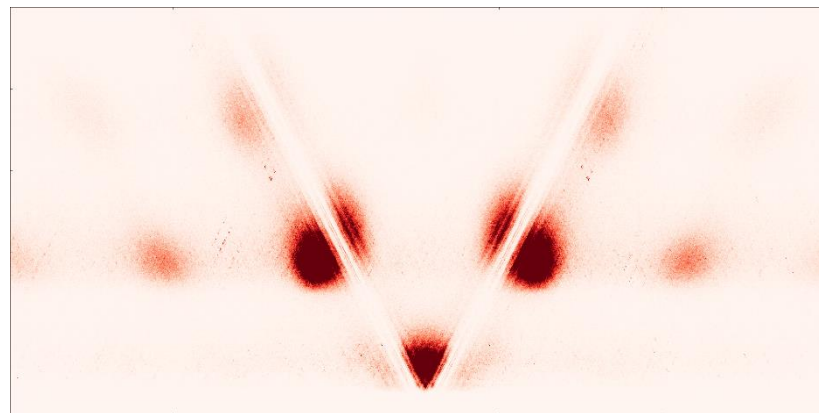


CTCF-250K-30min

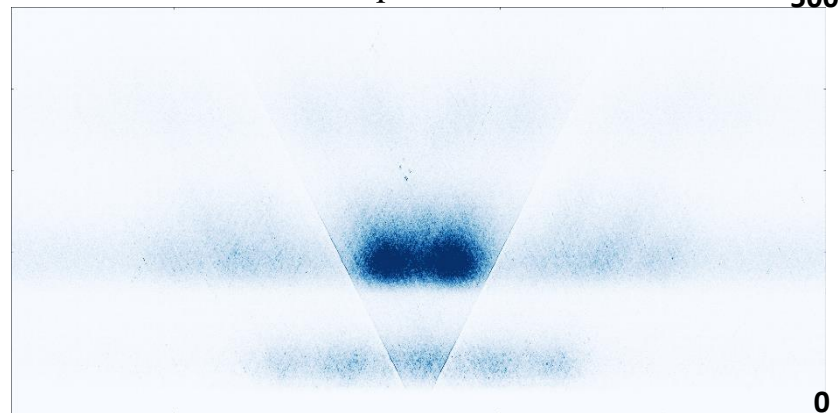
motif-centered

MACS2 peak call-centered

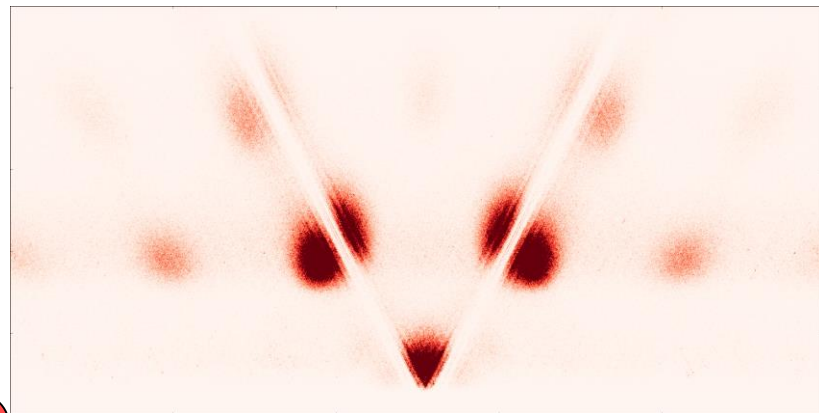
ChIP-common sites  
with motif



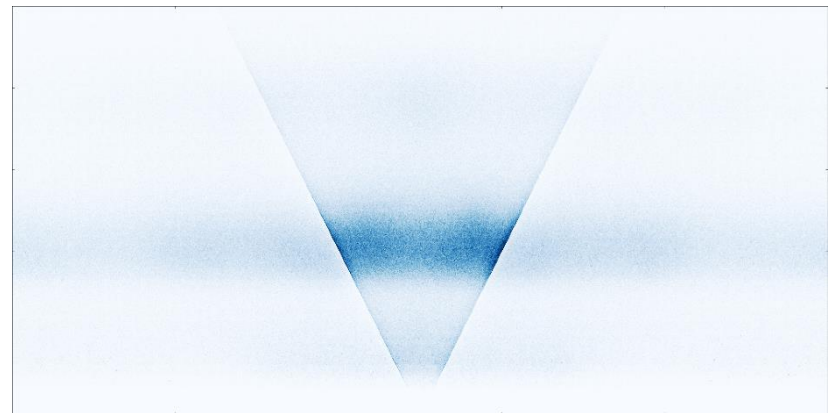
ChIP-common sites  
with motif



CUTnRUN-only sites  
with motif



CUTnRUN-only sites  
no motif



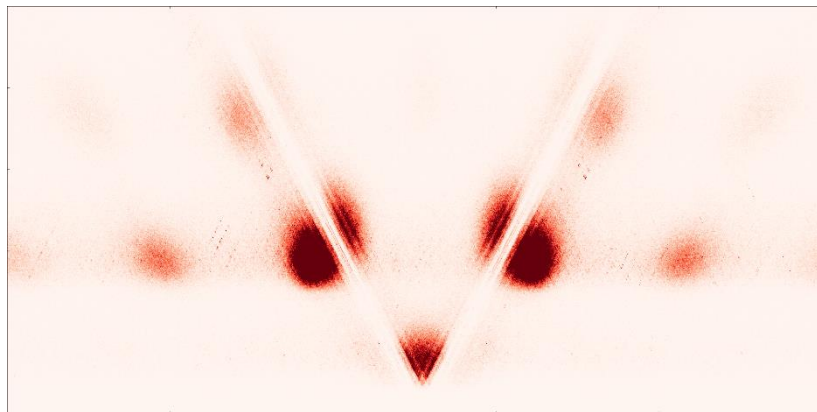
# CTCF-250K

motif-centered

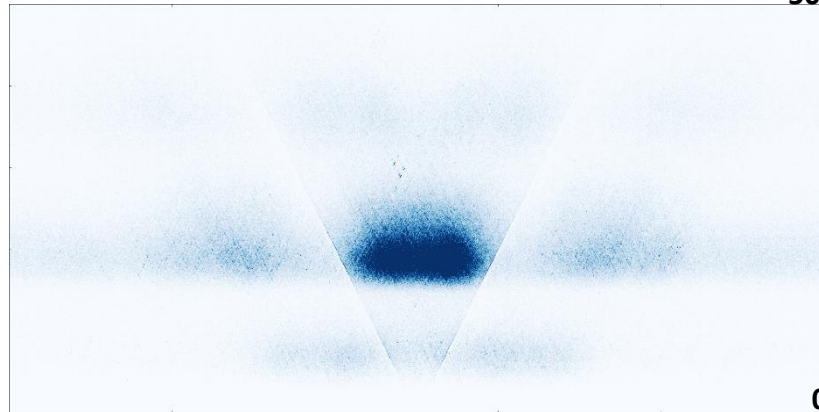
MACS2 peak call-centered

500

ChIP-common sites  
with motif

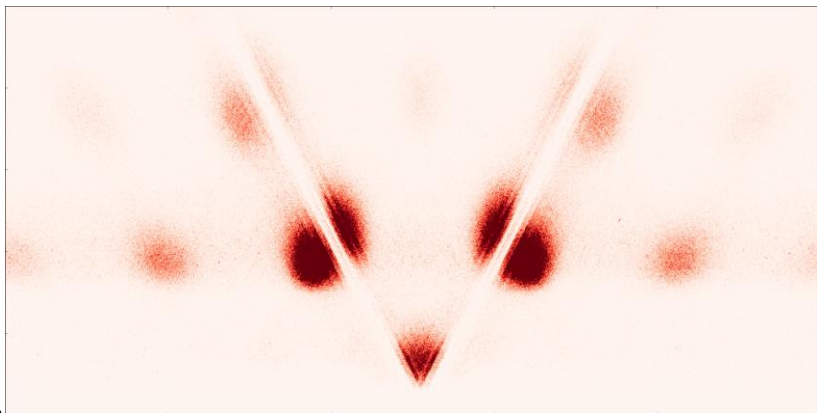


ChIP-common sites  
with motif

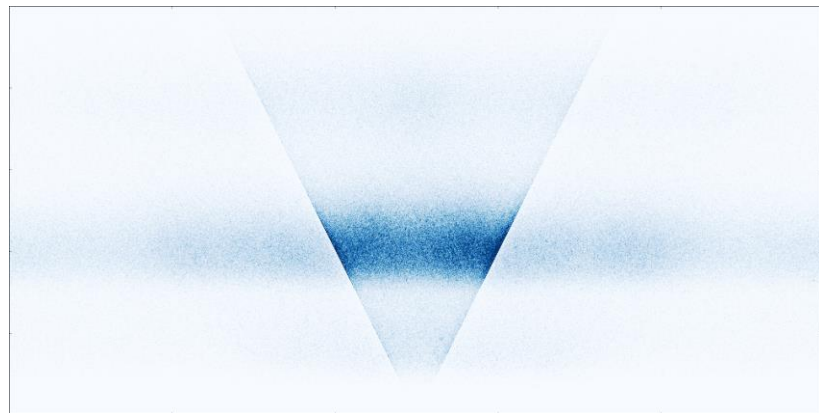


0

CUTnRUN-only sites  
with motif



CUTnRUN-only sites  
no motif



-500

0

500