

Dataset stats

Genome	Source	Assay	#	Complexity	Read Length	Unique	Raw fragments	Fraction mapped	MACS2 peaks	MACS2 FRiP
hg19	GSE104676	CUT&RUN	BCL11A_CD34_Day3_30min-GSM2805352	0.84	2x25	21,314,380	14,575,812	0.73	13,364	37,282
hg19	GSE104676	CUT&RUN	BCL11A_CD34_Day3_60min-GSM2805353	0.78	2x25	34,538,616	23,279,719	0.74	54,334	128,333
hg19	GSE104676	CUT&RUN	BCL11A_CD34_Day3_90min-GSM2805354	0.79	2x25	39,179,852	26,450,666	0.74	64,614	136,005
hg19	GSE104676	CUT&RUN	BCL11A_CD34_Day5_30min-GSM2805355	0.87	2x25	36,590,394	27,653,967	0.66	10,095	33,877
hg19	GSE104676	CUT&RUN	BCL11A_CD34_Day5_60min-GSM2805356	0.79	2x25	45,601,560	29,785,608	0.77	60,597	162,088
hg19	GSE104676	CUT&RUN	BCL11A_CD34_Day5_90min-GSM2805357	0.91	2x25	3,796,242	2,455,552	0.77	12,560	122,139
hg19	GSE104676	CUT&RUN	BCL11A_CD34_Day7_15min-GSM2805364	0.81	2x25	31,555,428	21,218,461	0.74	12,211	64,902
hg19	GSE104676	CUT&RUN	BCL11A_CD34_Day7_30min-GSM2805358	0.79	2x25	30,603,962	19,749,101	0.77	31,313	170,157
hg19	GSE104676	CUT&RUN	BCL11A_CD34_Day7_60min-GSM2805359	0.80	2x25	36,510,592	23,214,753	0.79	45,369	193,504
hg19	GSE104676	CUT&RUN	BCL11A_CD34_Day7_90min-GSM2805360	0.79	2x25	39,949,012	25,120,770	0.80	58,243	232,954
hg19	GSE104676	CUT&RUN	BCL11A_CD34_Day9_15min-GSM2805365	0.76	2x25	27,330,252	19,092,183	0.72	13,836	75,270
hg19	GSE104676	CUT&RUN	BCL11A_CD34_Day9_30min-GSM2805361	0.69	2x25	25,367,744	16,465,224	0.77	44,632	244,986
hg19	GSE104676	CUT&RUN	BCL11A_CD34_Day9_60min-GSM2805362	0.69	2x25	44,181,342	28,099,494	0.79	35,797	224,915
hg19	GSE104676	CUT&RUN	BCL11A_CD34_Day9_90min-GSM2805363	0.64	2x25	52,993,792	33,189,892	0.80	51,198	316,303
hg19	GSE104676	CUT&RUN	BCL11A_HUDEP2_KO-GSM2805374	0.89	2x25	18,524,862	12,075,203	0.77		
hg19	GSE104676	CUT&RUN	BCL11A_HUDEP2_rep1_60min-GSM2805366	0.83	2x25	23,062,666	14,916,722	0.77	23,377	98,834
hg19	GSE104676	CUT&RUN	BCL11A_HUDEP2_rep2_60min-GSM2805367	0.79	2x25	25,759,974	16,688,868	0.77	30,662	166,077
hg19	GSE104676	CUT&RUN	BCL11A_HUDEP2_rep3_60min-GSM2805368	0.87	2x25	23,629,384	15,285,994	0.77	17,053	48,000
hg19	GSE104676	CUT&RUN	BCL11A_HUDEP2_rep4_30min-GSM2805369	0.92	2x25	58,759,454	37,297,628	0.79	15,058	44,841
hg19	GSE104676	CUT&RUN	BCL11A_HUDEP2_rep4_60min-GSM2805370	0.91	2x25	64,091,078	40,605,300	0.79	24,123	66,388
hg19	GSE104676	CUT&RUN	BCL11A_HUDEP2_rep4_90min-GSM2805371	0.90	2x25	56,028,634	35,655,833	0.79	27,052	85,993
hg19	GSE104676	CUT&RUN	CD34_Day7_IgG-GSM2805372	0.79	2x25	27,026,644	19,335,023	0.70		
hg19	GSE104676	CUT&RUN	CD34_Day9_IgG-GSM2805373	0.80	2x25	16,047,772	11,391,116	0.70		
hg19	GSE104676	CUT&RUN	CTCF_HUDEP2_30min-GSM2805379	0.72	2x25	45,019,828	29,501,006	0.76	55,827	264,889
hg19	GSE104676	CUT&RUN	GATA1_CD34_Day7_30min-GSM2805377	0.36	2x25	33,357,740	28,787,551	0.58	60,394	745,710
hg19	GSE104676	CUT&RUN	GATA1_CD34_Day9_30min-GSM2805378	0.42	2x25	24,989,890	20,436,943	0.61	196	378,438
hg19	GSE104676	CUT&RUN	GATA1_HUDEP2_rep1_30min-GSM2805375	0.76	2x25	41,587,476	29,475,313	0.71	34,746	230,353
hg19	GSE104676	CUT&RUN	GATA1_HUDEP2_rep2_30min-GSM2805376	0.43	2x25	31,254,048	27,922,806	0.56	36,257	526,982

Note the extremely strong enrichment in blacklist regions

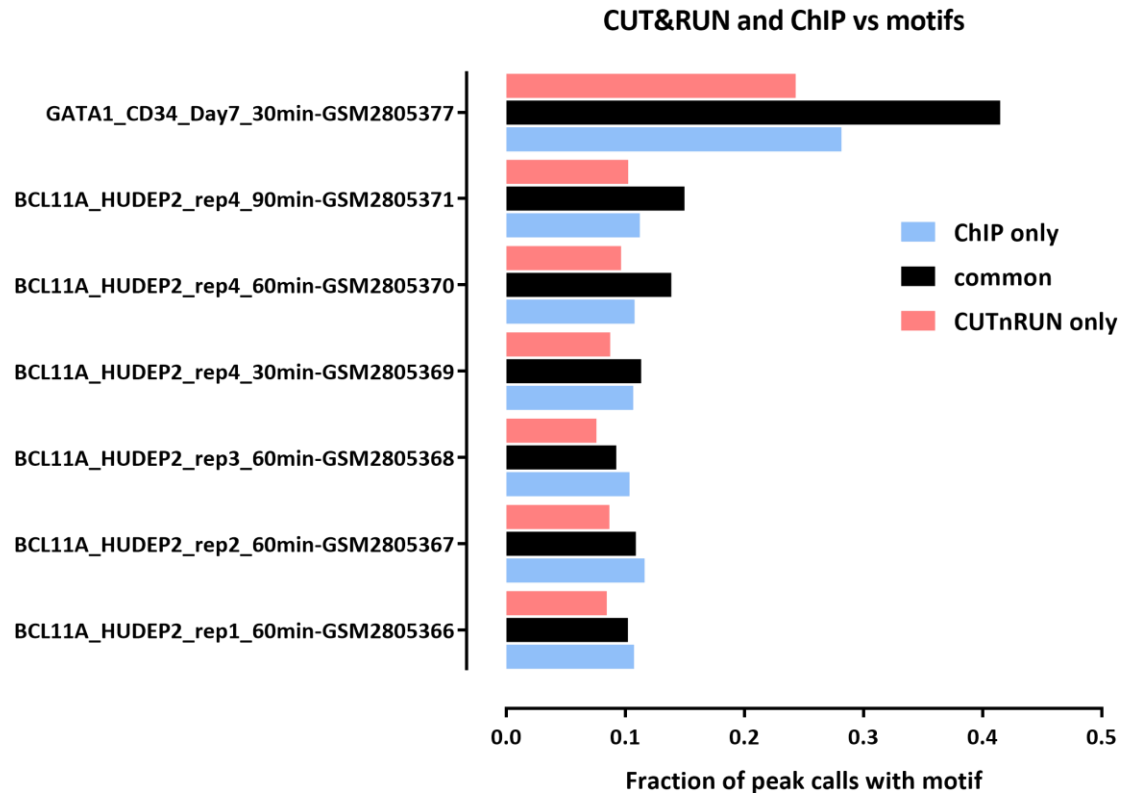
All subsequent plots are blacklist-filtered

Overlap:

#DataSet:	10456	22261	29615	15993	13985	22936	25925
HUDEP2-BCL11A-ChIP-GSE103445	1.00	0.64	0.71	0.47	0.49	0.64	0.71
BCL11A_HUDEP2_rep1_60min-GSM2805366	0.29	1.00	0.83	0.51	0.50	0.69	0.75
BCL11A_HUDEP2_rep2_60min-GSM2805367	0.24	0.61	1.00	0.42	0.41	0.59	0.66
BCL11A_HUDEP2_rep3_60min-GSM2805368	0.29	0.72	0.80	1.00	0.59	0.74	0.79
BCL11A_HUDEP2_rep4_30min-GSM2805369	0.34	0.78	0.85	0.64	1.00	0.90	0.93
BCL11A_HUDEP2_rep4_60min-GSM2805370	0.27	0.63	0.73	0.49	0.53	1.00	0.81
BCL11A_HUDEP2_rep4_90min-GSM2805371	0.26	0.60	0.71	0.45	0.48	0.70	1.00

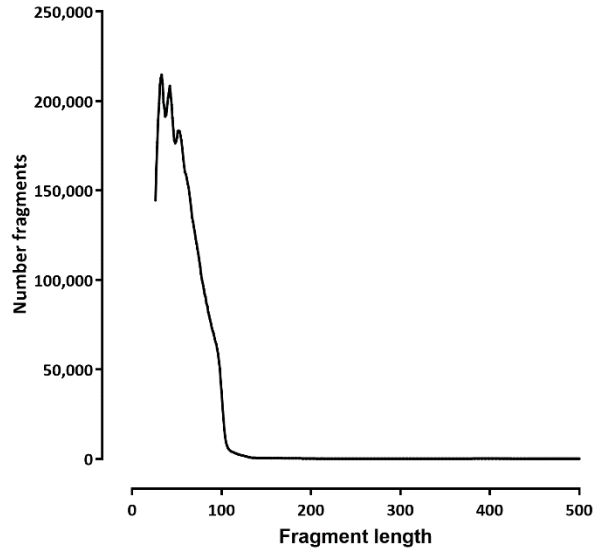
#DataSet:	43023	60285	23
CD34+-GATA1-ChIP-GSE93372	1.00	0.51	0.00
GATA1_CD34_Day7_30min-GSM2805377	0.36	1.00	0.00
GATA1_CD34_Day9_30min-GSM2805378	0.30	0.83	1.00

Motif presence

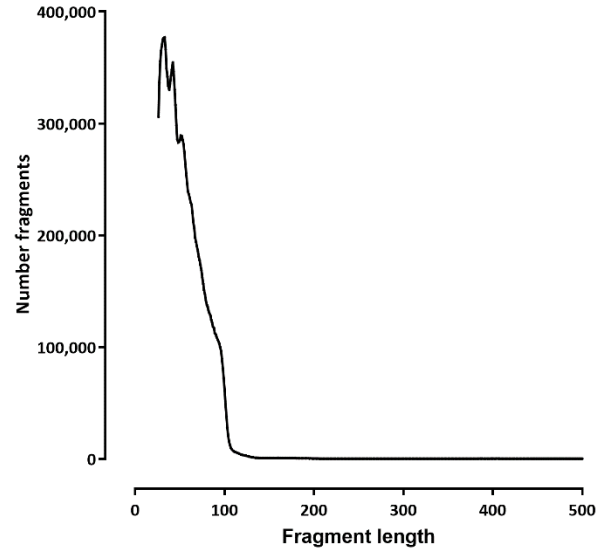


Fragment length distributions

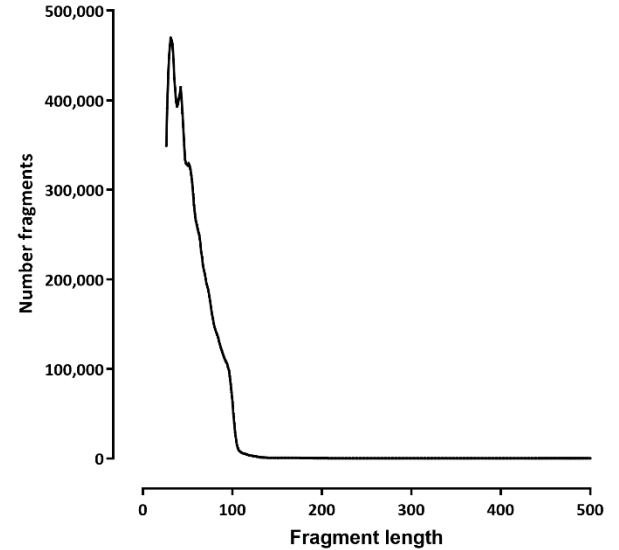
BCL11A_CD34_Day3_30min-GSM2805352



BCL11A_CD34_Day3_60min-GSM2805353



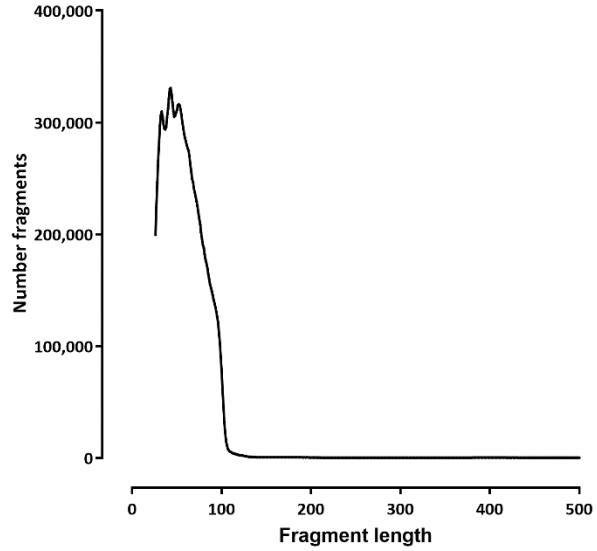
BCL11A_CD34_Day3_90min-GSM2805354



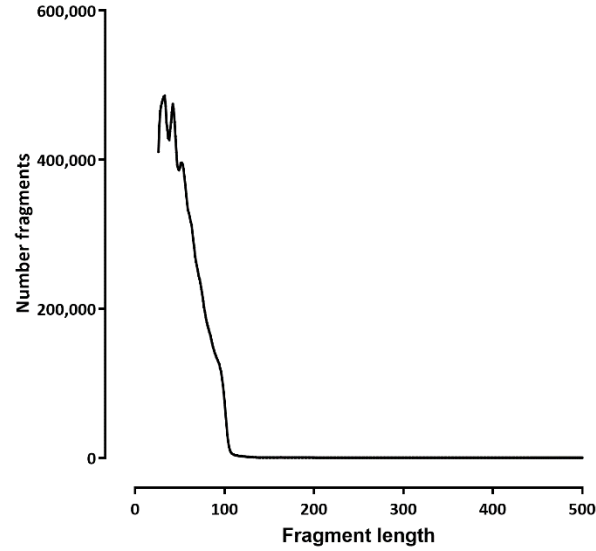
Note that V-plots are meaningless for these because of the fragment length distribution

Fragment length distributions

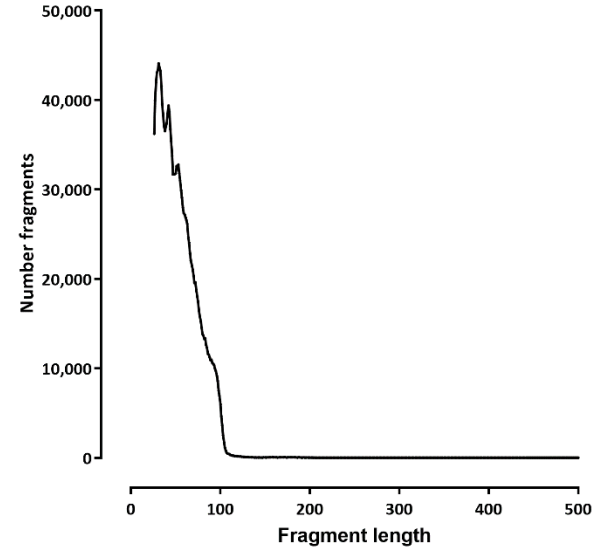
BCL11A_CD34_Day5_30min-GSM2805355



BCL11A_CD34_Day5_60min-GSM2805356

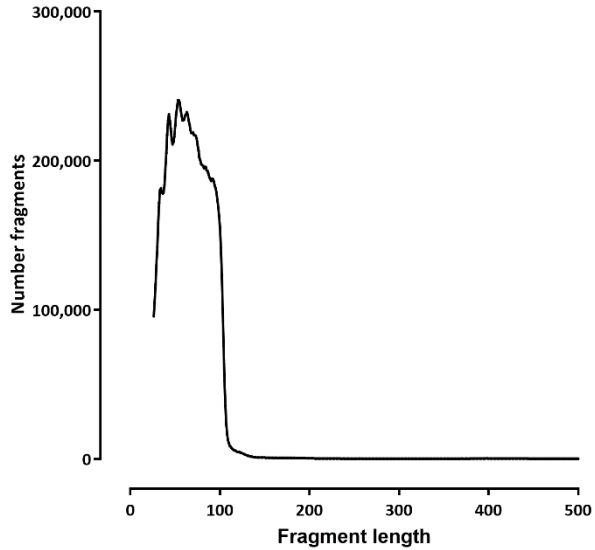


BCL11A_CD34_Day5_90min-GSM2805357

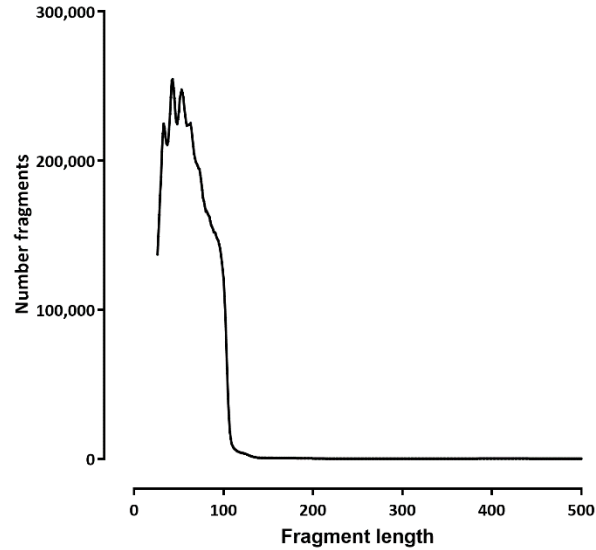


Fragment length distributions

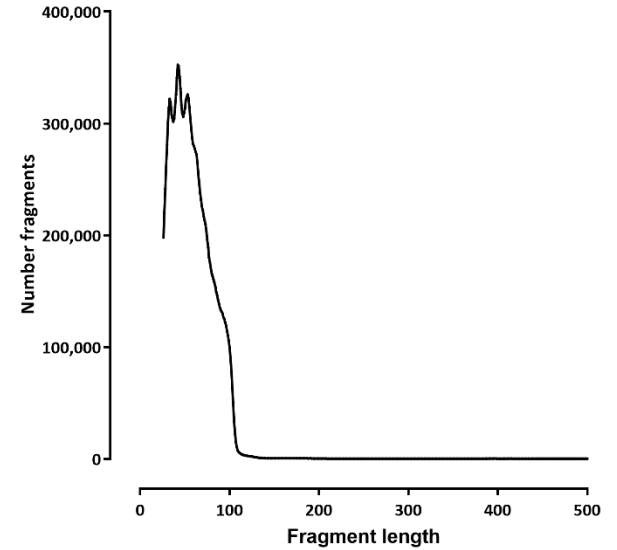
BCL11A_CD34_Day7_15min-GSM2805364



BCL11A_CD34_Day7_30min-GSM2805358

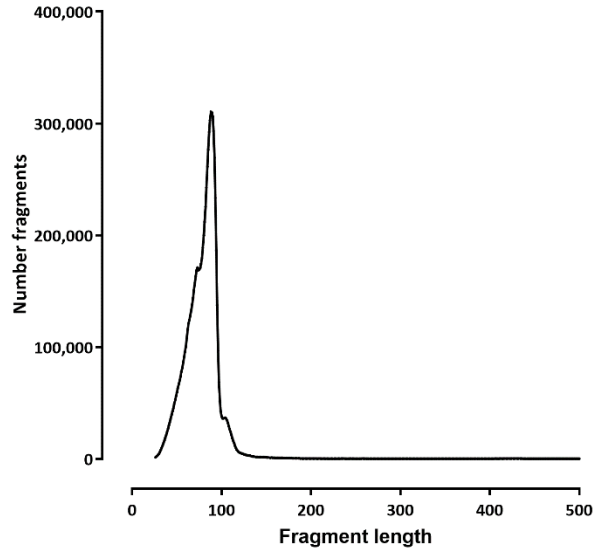


BCL11A_CD34_Day7_60min-GSM2805359

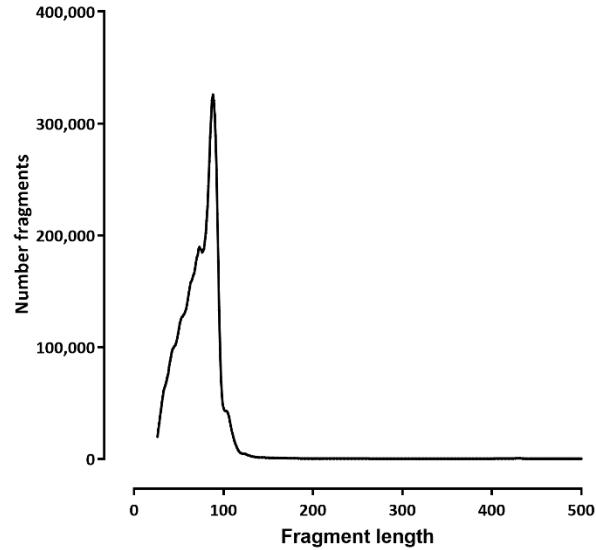


Fragment length distributions

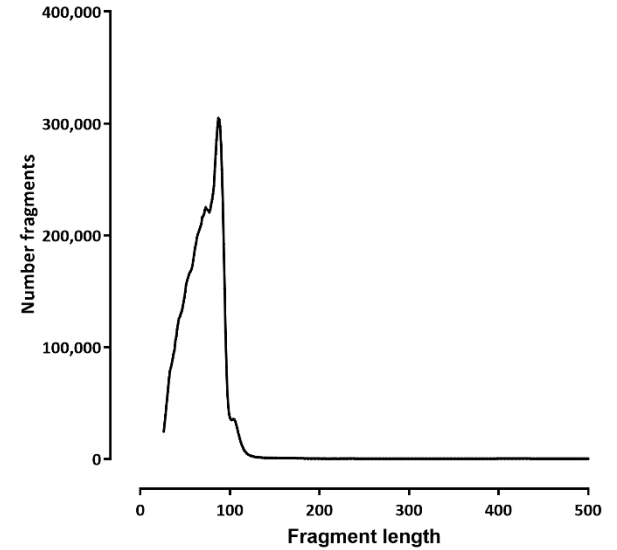
BCL11A_HUDEP2_KO-GSM2805374



BCL11A_HUDEP2_rep1_60min-GSM2805366

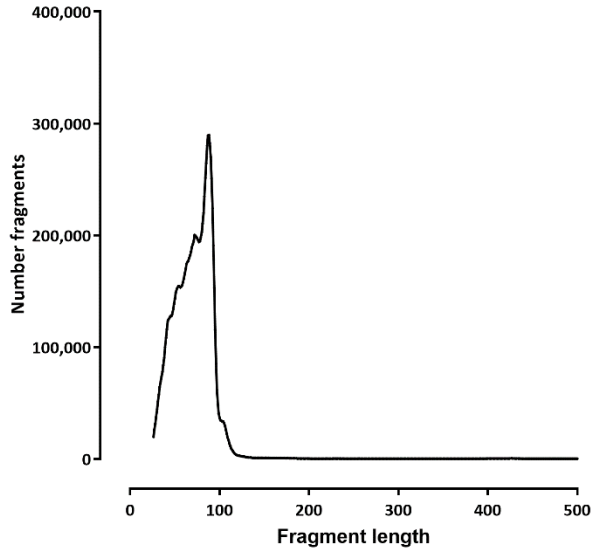


BCL11A_HUDEP2_rep2_60min-GSM2805367

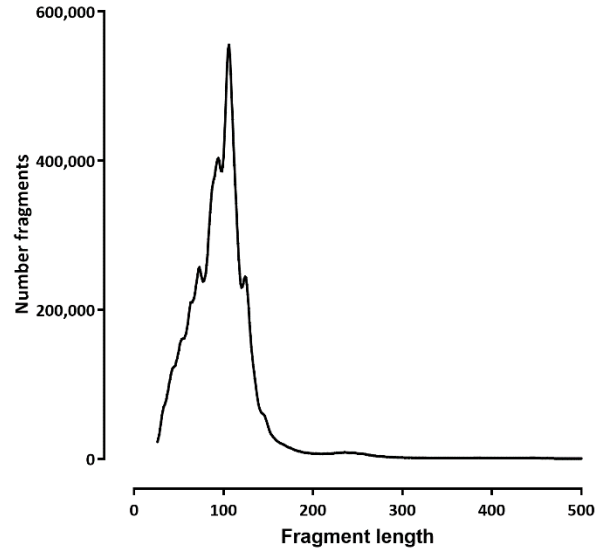


Fragment length distributions

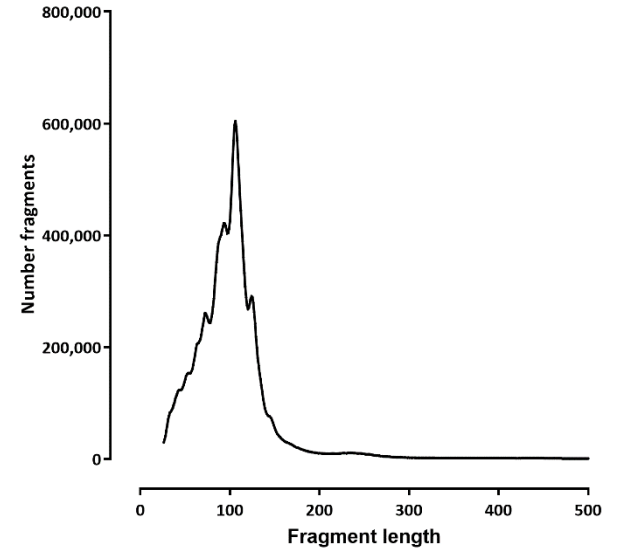
BCL11A_HUDEP2_rep3_60min-GSM2805368



BCL11A_HUDEP2_rep4_30min-GSM2805369

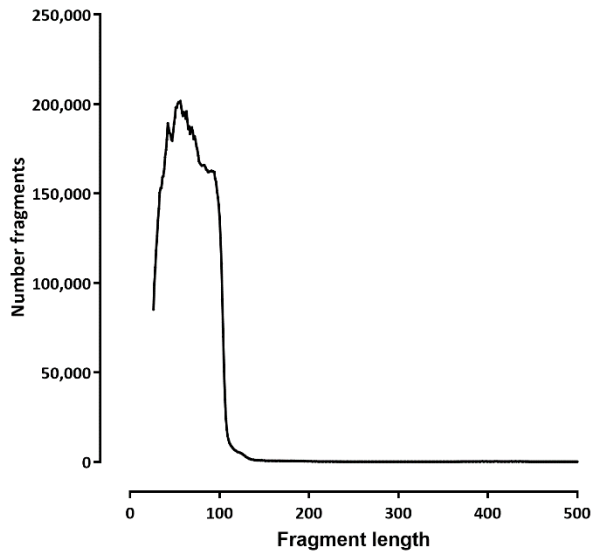


BCL11A_HUDEP2_rep4_60min-GSM2805370

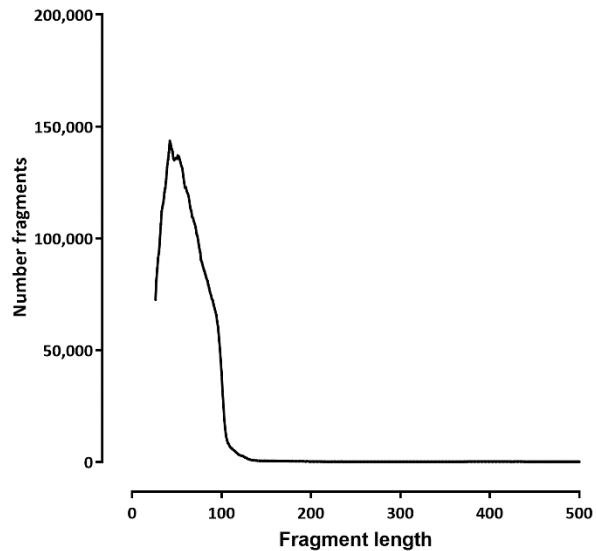


Fragment length distributions

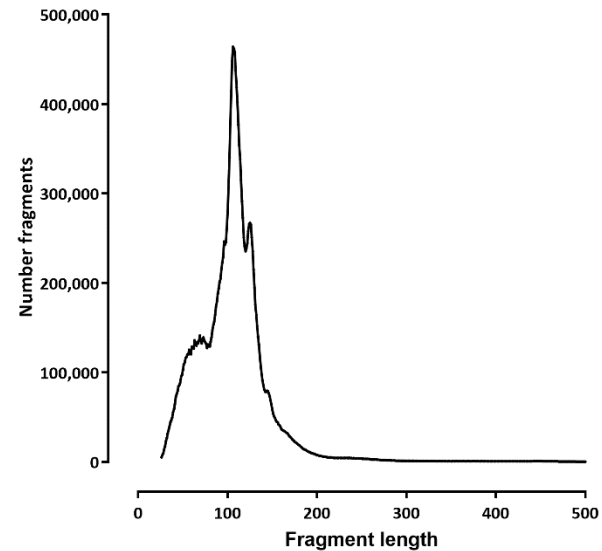
CD34_Day7_IgG-GSM2805372



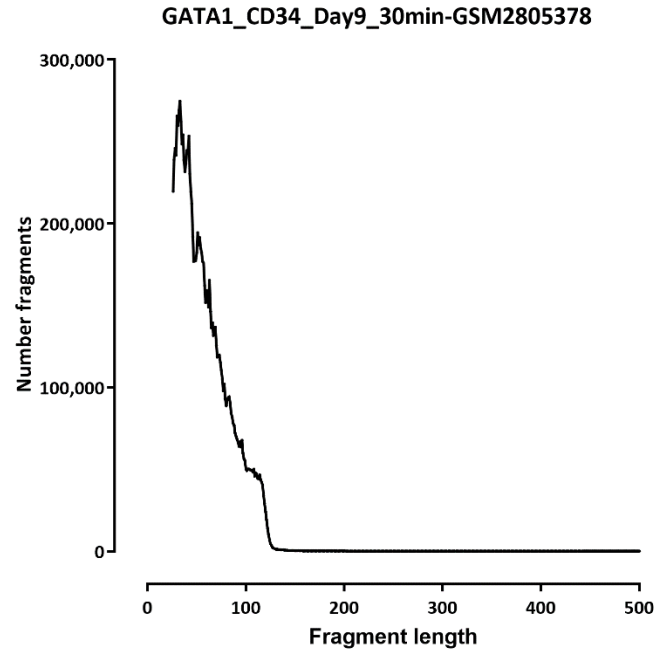
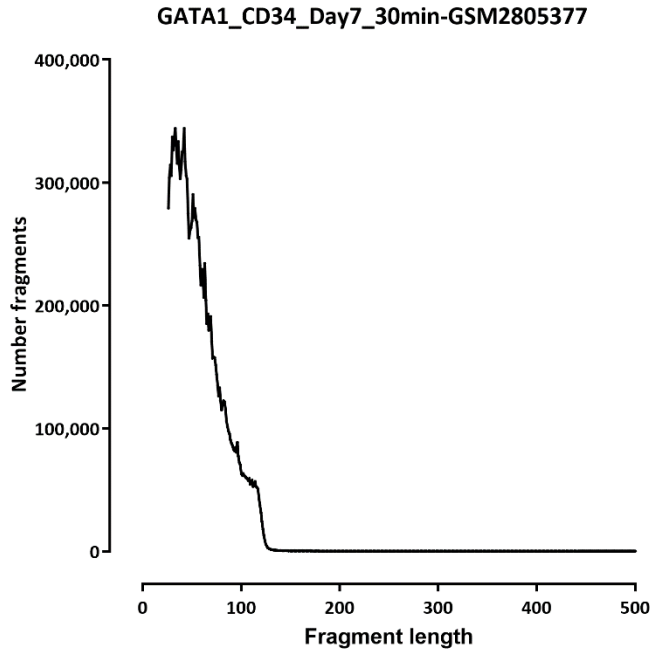
CD34_Day9_IgG-GSM2805373



CTCF_HUDEP2_30min-GSM2805379



Fragment length distributions



Fragment length distributions

