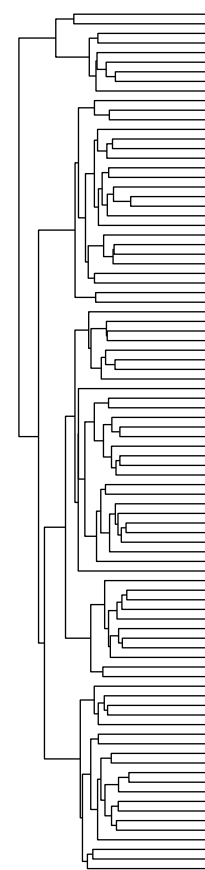


- | | | | | | | | | | | |
|-------------------|--------|------------------------|------------------------|-----------------|-------|------------|----------|-------------|---------|---------------------------|
| Autonomic ganglia | Bone | Central nervous system | Endometrium | Kidney | Liver | Oesophagus | Pancreas | Skin | Stomach | Upper aerodigestive tract |
| Biliary tract | Breast | Cervix | Hematopoietic/lymphoid | Large intestine | Lung | Ovary | Pleura | Soft tissue | Thyroid | Urinary tract |



UBALD1
MGRN1
RAB26
CLDN9
TNFRSF12A
HCF1R1
PAQR4
CCDC648
KREMEN2
MSRB1
SPSB3
NME3
EC1
NOXD1
AMDH2
PRSS33
SEC14L5
ZSCAN32
FAM173A
TMEM8A
C16orf13
NAA60
C16orf91
HAGH
BAIAP3
CLCN7
RNF151
GME2
MAPK8IP3
RABD1
RAB4C
ZNF205
CLDN6
ZNF200
ZNF75A
PTX4
TIGD7
PRSS27
ZNF263
FLYWCH1
CEMP1
ADCY9
ZNF597
IL32
NOMG1
PRSS22
DNASE1
CORC7
HMOX2
TBC1D24
PPL
ZG168
PRSS1
CLUAP1
SMIM22
MEFV
NMRAL1
NAGRA
ANKS3
C16orf42
SEPT12
C16orf71
ZNF500
BFAR
GRIN2A
TMC7
METTL22
SNH
C16orf96
C16orf92
LITAF
ZSCAN10
VASN
BRICD5
OR2C
SEL
C16orf89
FLYWCH2
CASKIN1
C16orf90
CDP1
ZNF213
TRAF1
DNASE1L2
OR1H
MMP25
GLIS2
TRAF7
ZNF174
NUDT16L1

